

Expertise

Protocol number: 45948295
Order No. / Reference: 26510472
Inspection date: 11 Jun 2026

Manufacturer: Seat

Model: Ateca 2.0 TDI DSG FR

VIN: VSSZZZ5FZN6519826



Vehicle details

Manufacturer / Type / Model / Equipment

Seat Ateca 2.0 TDI DSG FR

Vehicle Identification number VSSZZZ5FZN6519826

Mileage (Read) 174,091 km

First registration 9 Feb 2022

Number of holders 1

Power / Engine displacement 110 kw / 1,968 ccm

Fuel type / Cylinder Diesel / 4

Gearbox / Number of gears Automatic / 7

Type of drive Front drive

Type of vehicle SUV

Colour / colour code Magic Schwarz (F9R)

Doors / Seats 5 / 5

Upholstery type Cloth / leather combination

Colour of upholstery Black-Anthracite



Vehicle details

Maintenance booklet / proof	digital proof / complete	Next maintenance in	18,100 km
Last service on / at	02/2026 at 164,215 km		
Key is / should be	2 / 2	FZG documents	ZB#2 (B) was available (copy), ZB#1 (S) was not available.
		Letter No.	GG174908
Previous damage / Accident	None detectable	Repainting	None detectable
Inspection conditions	sufficient	Lifting equipment / pit	yes
Test drive	Not performed	Engine function test	Performed
Manufacturer key number/ type code number	7593 / AMQ 00221		
Emission standard	EURO6;WLTP;AP;PI/CI; M, N1 I	fine dust sticker	
Permitted total weight	2,030 kg	Empty weight	

Tyres

Mounted tyres				
#	Tyre size	Type of tyre	Manufacturer	Tread depth
1)	235/40 R19 96Y	Summer tyres on Light alloy	Pirelli	5mm / 5mm
2)	235/40 R19 96Y	Summer tyres on Light alloy	Pirelli	5mm / 5mm
Replacement				
Typ	Tyre size	Type of tyre	Manufacturer	Tread depth
N	125/70 R18 99M	Summer tyres on Steel	Sonstige	4 mm

Legend: Tread depth information for the left tire is listed first, for the right tire it is listed second on the axle in the direction of travel.



Equipment

Standard equipment

- 12V socket at the front
- Storage compartment in the middle area of the lower dashboard
- Storage pocket on the back of the front seats
- Electrically adjustable, folding and heated exterior mirrors
- Outdoor temperature display
- On-board computer
- Roof rails in black
- Electronic differential lock (XDS)
- Three-point automatic seat belts, front and rear, with belt tensioners
- Electronic parking brake including auto-hold function
- Electric windows front and rear
- Luggage compartment cover
- Transmission: 7-speed DSG automatic transmission
- LED taillights
- Rear spoiler in car color
- Body covers on the wheel arches
- Headrests, 2 front, 3 rear
- Paint finish: Solid
- Armrest - centre, rear
- Multifunction display with multi-color screen
- Fatigue detection
- Emergency call service
- Upholstery: Cloth
- Radio: Media System Plus Style, Xperience, FR
- Wheels: 4 light alloy wheels "Performance III"
- Rear view camera
- Paddle shifters on the steering wheel
- "FR" lettering on tailgate
- SEAT Drive Profile with "Driving Experience" button and progressive steering
- Electromechanical power steering
- Seats: Lumbar support for driver and front passenger with height adjustment for front passenger seat
- LED daytime running lights
- Front Assist area monitoring system with City Emergency Braking function
- Electronic immobilizer
- Central locking, including tailgate, with remote control
- Storage compartment for sunglasses on the driver's side
- Storage compartment in the front doors
- Storage compartment under the driver's seat
- Airbags
- Exterior mirror housings in Cosmo Grey
- Hill Start Assist (HHC)
- Chrome applications in the interior
- Diesel particulate filter and SCR catalyst
- Tachometer
- Third brake light, integrated into the tailgate
- Rear parking sensors
- Electronic Stability Control (ESC)
- Gear recommendation display
- Cruise control system (CCS)
- Illuminated glove compartment
- Rear window wiper and rear window heater
- ISOFIX child seat restraint system
- Climatronic air conditioning system with electronic temperature control
- Steering wheel: Multifunction steering wheel in leather
- Center console with integrated storage compartment, center armrest, cup holders and rear air vents
- Fog lights with cornering light function in LED technology
- Package: LED interior light
- Radio: Digital radio reception DAB+
- Tire Pressure Monitoring System (TPMS)
- Wheels: Tyre fit
- Rear seat backrest asymmetrically split and foldable
- Keyless locking and starting system "Kessy"
- SEAT CONNECT
- Side windows from the 2nd row of seats and rear window are dark tinted.
- Seats: Driver's seat with height adjustment
- Sport pedals in aluminum look
- Start-stop technology
- Front door sill trims in aluminum look, illuminated
- Lashing eyes in the luggage compartment
- Full LED headlights
- Thermal insulation glazing



Extra equipment

- Storage box under the front seats
- Deletion of the lettering on the tailgate
- Luggage partition net
- Paint finish: Metallic
- Navigation system with 9.2" color touchscreen
- Package: Business package INFOTAIN P23
- Package: Driving Assistance Package XL for Navigation (Adaptive Cruise Control (ACC) up to 210 km/h with predictive speed control - High Beam Assist - Lane Keeping Assist - Traffic Sign Recognition - Side Assist - Travel Assist - Emergency Assist - Pre-Crash Assist)
- Package: Winter (multifunction leather steering wheel, heated - heated front seats)
- Radio accessories: BeatsAudio sound system (9 speakers - digital 12-channel amplifier - subwoofer - 340 watts total power)
- Wheels: Spare wheel as emergency wheel
- Seats: Remote release for folding down the rear seat backrest into the boot
- Top-view camera including reversing camera PCT
- Virtual Cockpit (Fully digital instrument cluster with 10.25" TFT display)
- Black headliner
- Chassis: Adaptive chassis control DCC
- Electrically operated tailgate (opening & closing) XPERIENCE,FR (incl.: - Sensor-controlled opening & closing (Virtual Pedal))
- Package: Dinamica (Seat center panel in Dinamica microfiber, black - Comfort seats front)
- Package: Light and Sight (Automatic Coming Home and Leaving Home function - Automatically dimming interior mirror - Light sensor with automatic headlight control - Rain sensor)
- Panoramic glass sliding roof, electric, including sunshade blind.
- Radio accessories: Wireless charger in the storage compartment of the center console
- Wheels: 4 alloy wheels "Exclusive VI Cosmo Grey", polished (8J x 19 with tires 235/40 R 19)
- Auxiliary heater including remote control
- Power outlet: 230V socket in the luggage compartment including 12V socket

Brief expert findings

Documents submitted	At the time of the inspection, the vehicle registration certificate Part 2 (title) was available, but the vehicle registration certificate Part 1 (document) was not. (Copy)
VIN comparison	The vehicle identification number (VIN) was read from the vehicle and its conformity with the submitted documents was confirmed by the undersigned during the inspection.
Inspection	The inspection conditions were sufficient for the assessment of the vehicle. Lifting equipment and/or a pit were available for examining the vehicle.
Test drive	No test drive/shunting maneuver was carried out during the inspection of the vehicle.
Engine function test	An engine test run was performed.

Value reducing factors

No.	Component group	Description
1	Misc.	Main inspection - No evidence - No deduction
2	Equipment	Vehicle key (Batterie) - Empty - Replace
3	Side panel - rear left side	Sill - Scratch(es) - Smart repair
4	Side panel - rear right side	Side panel - dent(s) - Smooth repair work
5	Front bumper	Front bumper - Scratch(es) - Smart repair
6	Door - front right side	Door - Scratch(es) - Smart repair
7	Side panel - rear left side	Side panel (Dichtung) - Broken / torn - Replace
8	Wheel / tyres	Alloy rim - front right side - Scratch(es) - Loss in value
9	Door - rear left side	Door - Dent / paintcoat damage - Repair and paint
10	Vehicle glazing	Windscreen (Rissbildung) - Stone chips - Replace



Order/Scope of Order

An order was placed to prepare a sales report for the described vehicle. This report includes the following:

- Description of key vehicle information
- Documentation of equipment features
(Delivery by third-party service providers)
- Documentation of damage, defects, missing parts
- Documentation of prior damage, unrepaired prior damage, repainting
- A brief visual or functional inspection of the equipment details, if possible.
(Functional testing of driver assistance systems is not included in the scope of services!)
- a photographic documentation of the vehicle

Basis for the order

This product is based on the guidelines for vehicle returns and valuations published by Alphabet Fleet GmbH. The expert makes the specific findings in each individual case objectively, within the framework of the prescribed standards, based on their own expertise.

The vehicle inspection takes place in a fully assembled, unassembled state.

Damage or defects that can only be detected during disassembly/diagnostic work or through further investigation remain within the realm of prognostic risk. An increased risk exists due to concealed defects caused by fraudulent misrepresentation and which were not identifiable by the expert.

Damage or defects resulting from normal use or wear and tear of the vehicle will be accepted in accordance with the applicable standard.

There was no explicit identification or monetary consideration of the expected features within the product.

Features which, in their nature and extent, slightly exceed normal use but do not constitute unacceptable damage, will be documented and indicated as signs of wear, if applicable.

Damage or defects that, according to the applicable standard, can no longer be attributed to normal use or wear and tear are listed under "Value Reducing Factors" in the product description.

Depending on the product specification, a monetary ID can be provided. If this takes place, the costs can be 100% or pro rata depending on the vehicle's age and mileage.

Previous damages

No apparent prior damage that had been repaired could be found on the vehicle.



Figure 1: Diagonal front (left)



Figure 2: Diagonal front (right)



Figure 3: Diagonal rear (left)



Figure 4: Diagonal rear (right)



Figure 5: Interior - front



Figure 6: Interior - rear



Figure 7: Instrument cluster



Figure 8: Instrument panel



Figure 9: Interior 360° view



Figure 10: Cargo area



Figure 11: VIN



Figure 12: Mounted tyres



Figure 13: Documents



Figure 14: Navigation



Figure 15: Misc.



Figure 16: Misc.



Figure 17: Misc.



Figure 18: Misc.



Figure 19: Misc.



Figure 20: Misc.



Figure 21: Misc.

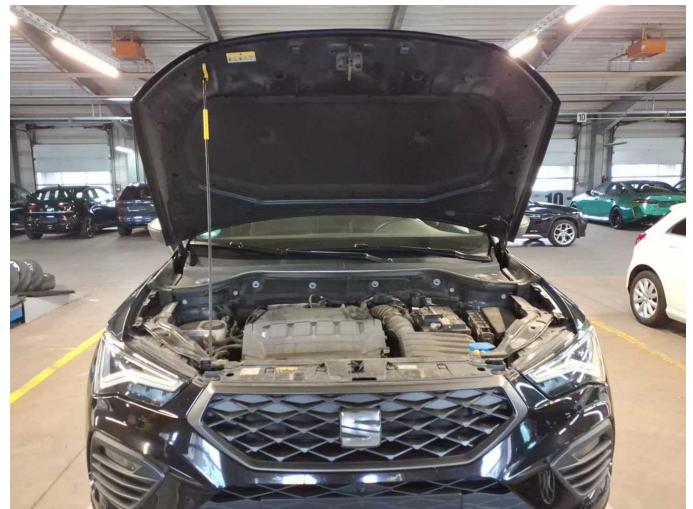


Figure 22: Misc.



Figure 23: Misc.



Figure 24: Misc.

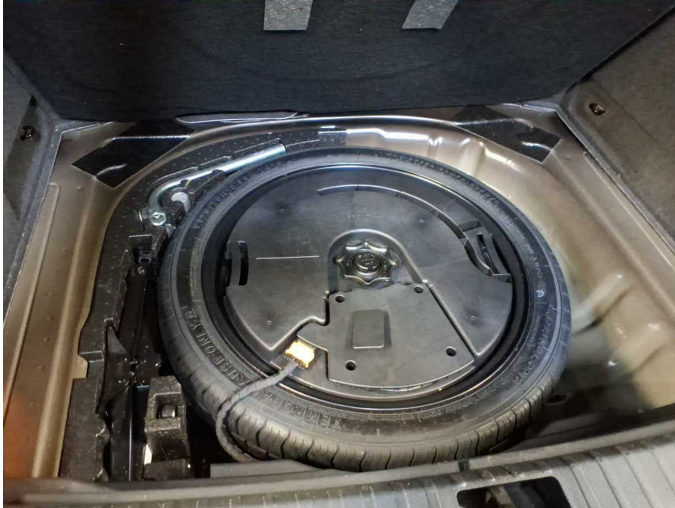


Figure 25: Misc.



Damage 3: Side panel - rear left side: Sill - Scratch(es) - Smart repair



Damage 3: Side panel - rear left side: Sill - Scratch(es) - Smart repair



Damage 4: Side panel - rear right side: Side panel - dent(s) - Smooth repair work



Damage 4: Side panel - rear right side: Side panel - dent(s) - Smooth repair work



Damage 4: Side panel - rear right side: Side panel - dent(s) - Smooth repair work



Damage 5: Front bumper: Front bumper - Scratch(es) - Smart repair



Damage 5: Front bumper: Front bumper - Scratch(es) - Smart repair



Damage 6: Door - front right side: Door - Scratch(es) - Smart repair



Damage 6: Door - front right side: Door - Scratch(es) - Smart repair



Damage 6: Door - front right side: Door - Scratch(es) - Smart repair



Damage 6: Door - front right side: Door - Scratch(es) - Smart repair



Damage 7: Side panel - rear left side: Side panel (Dichtung) - Broken / torn - Replace



Damage 7: Side panel - rear left side: Side panel (Dichtung) - Broken / torn - Replace



Damage 8: Wheel / tyres: Alloy rim - front right side - Scratch(es) - Loss in value



Damage 8: Wheel / tyres: Alloy rim - front right side - Scratch(es) - Loss in value



Damage 9: Door - rear left side: Door - Dent / paintcoat damage - Repair and paint



Damage 9: Door - rear left side: Door - Dent / paintcoat damage - Repair and paint



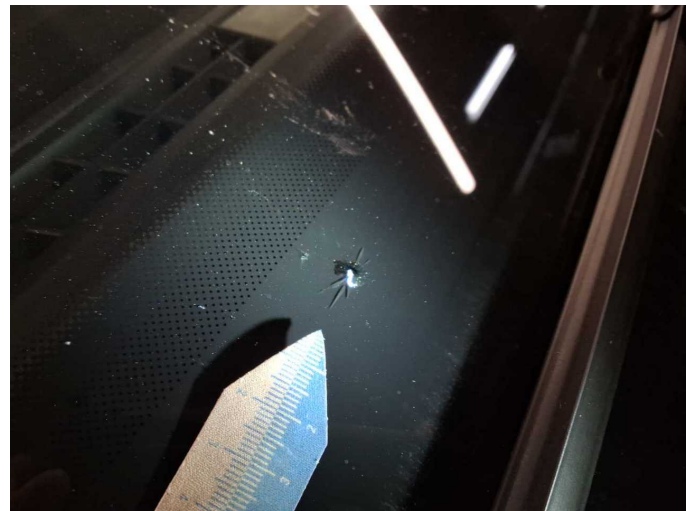
Damage 9: Door - rear left side: Door - Dent / paintcoat damage - Repair and paint



Damage 10: Vehicle glazing: Windscreen (Rissbildung) - Stone chips - Replace



Damage 10: Vehicle glazing: Windscreen (Rissbildung) - Stone chips - Replace



Damage 10: Vehicle glazing: Windscreen (Rissbildung) - Stone chips - Replace



Wartungshistorie

(gemäß Auftraggeber Informationen)

Fahrgestellnummer: VSSZZZ5FZN6519826
Hersteller / Modell: SEAT SEAT Ateca 2.0 TDI DSG FR

Datum	KM-Stand	Beschreibung
04.05.2026	172.657	Kraftstofffilter ern; Regelwartungsdienst; Systemtest/Eigendiagnose; Wartung Sonstiges
11.03.2026	167.068	Reparatur Sonstiges; Systemtest/Eigendiagnose
11.02.2026	164.215	Bremsflüssigkeit; Bremsflüssigkeit ern; Motoröl b. Wartung; Ölfilter ern; Ölwechsel; Wartung Sonstiges
04.08.2025	143.894	Bremse Sonstiges; Bremsklötze vorne; Bremsscheiben + Klötze v; Bremsscheiben vorne; Regelwartungsdienst
06.06.2025	138.158	Getriebeöl ern/prüfen; Motoröl b. Wartung; Ölfilter ern; Ölwechsel; Wartung Sonstiges
18.02.2025	126.634	AU; Wartung Sonstiges
28.10.2024	115.994	Bremse Sonstiges; Bremsklötze hinten; Bremsscheiben + Klötze h; Bremsscheiben hinten; Regelwartungsdienst
25.09.2024	109.922	Luftfiltereinsatz ern; Motoröl b. Wartung; Ölfilter ern; Ölwechsel; Wartung Sonstiges
01.03.2024	86.648	Kraftstofffilter ern; Regelwartungsdienst; Wartung Sonstiges
05.02.2024	82.926	Bremsflüssigkeit; Bremsflüssigkeit ern; Motoröl b. Wartung; Ölfilter ern; Ölwechsel; Wartung Sonstiges
28.06.2023	57.364	Motoröl b. Wartung; Regelwartungsdienst
17.10.2022	28.268	Motoröl b. Wartung; Regelwartungsdienst