

Expertise

Protocol number: 46193589
Order No. / Reference: 26559608
Inspection date: 29 Jun 2026

Manufacturer: CUPRA

Model: Born 150kW/58kWh

VIN: VSSZZK14RP022075



Vehicle details

Manufacturer / Type / Model / Equipment

CUPRA Born 150kW/58kWh

Vehicle Identification number VSSZZK14RP022075

Mileage (Read) 27,849 km

First registration 5 Apr 2024

Number of holders 1

Power / Engine displacement 70 kw /

Fuel type / Cylinder Electric / 0

Gearbox / Number of gears Direct drive / 1

Type of drive Rear drive

Type of vehicle Saloon car

Colour / colour code Pebble Grey (A7C)

Doors / Seats 5 / 5

Upholstery type Cloth

Colour of upholstery Black-Grey

Vehicle with smoke odor no



Vehicle details			
Maintenance booklet / proof	Non-existent	Next maintenance in	625 Tag(e)
Key is / should be	2 / 2	FZG documents	ZB#2 (B) was available (copy), ZB#1 (S) was not available.
		Letter No.	GY941231
Previous damage / Accident	None detectable	Repainting	None detectable
Inspection conditions	sufficient	Lifting equipment / pit	yes
Test drive	short drive on the company premises	Engine function test	Performed
Manufacturer key number/ type code number	7593 / ASO 00024		
Emission standard	2017/1151;WLTP;reine Elektrofz	fine dust sticker	
Permitted total weight	2,280 kg	Empty weight	

Tyres

Mounted tyres				
#	Tyre size	Type of tyre	Manufacturer	Tread depth
1)	215/55 R18 95T	Summer tyres on Light alloy	Goodyear	5mm / 5mm
2)	215/55 R18 95T	Summer tyres on Light alloy	Goodyear	5mm / 5mm
Replacement				
Typ	Tyre size	Type of tyre	Manufacturer	Tread depth
	Tirefit	Expiration date 01/2028		

Legend: Tread depth information for the left tire is listed first, for the right tire it is listed second on the axle in the direction of travel.



Equipment

Standard equipment

- Airbag: Airbag for driver and front passenger
- Airbag: Head airbag system, front and rear
- Exterior mirrors: aspherical on driver's side, convex on passenger's side
- third brake light
- CCS charging socket
- CUPRA e-Sound
- CUPRA side skirts in Liquid Grey
- decorative elements
- Electronic Stability Control (ESC)
- Luggage compartment lighting
- Speed limiter
- rear window wiper
- Rear bumper and diffuser in body color
- High-voltage battery warranty 8 years or maximum 160,000 km, with 70% Abattery power
- Keyless Go (engine start/stop button)
- Air conditioning: Climatronic with electronic temperature control
- Paint finish: Solid
- Steering wheel: CUPRA Supersport multifunction steering wheel in leather
- Center console with integrated storage compartment and cup holders
- Progressive steering
- Rain sensor
- Wheels: CYCLONE 7.5J x 18" alloy wheels
- Seat belts - front and rear
- Seats: CUPRA sports bucket seats in the front
- Seats: Driver's seat with height adjustment
- Sport pedals in aluminum look
- 12V socket in the luggage compartment
- Ultrasonic parking aid front and rear
- Electronic immobilizer
- thermal insulation glazing
- Airbag: Passenger airbag deactivation
- Ambient lighting in the front door panel
- Electrically adjustable, folding and heated exterior mirrors
- Exterior mirror housing in Liquid Grey
- C-pillar with CUPRA design element
- CUPRA Drive Profile
- CUPRA lettering on tailgate
- Black headliner
- Electronic parking brake including auto-hold function
- Electric windows front and rear, with anti-pinch protection and one-touch function
- Transmission: 1-speed automatic
- Rear spoiler in car color
- Manufacturer's warranty: 5 years or up to 150,000 km
- Interior mirror automatically dimming
- ISOFIX child seat restraint system, in the 2nd row of seats left and right as well as on the front passenger seat
- Headrests, 2 front
- Headrests, 3 rear
- Mode 3 Type 2 charging cable, 16 A
- Lights: Full headlights
- front center armrest
- Fatigue detection
- Emergency call service
- Radio: Radio and multimedia systems
- Tire pressure monitoring system
- Windscreen wiper interval control
- Seats: 3 rear seats, rear seat backrest asymmetrically split and foldable
- Sun visors with illuminated makeup mirror
- Lane departure warning system
- Front bumper in body color
- Front Assist area monitoring system with City Emergency Braking function

Brief expert findings

Documents submitted	At the time of the inspection, the vehicle registration certificate Part 2 (title) was available, but the vehicle registration certificate Part 1 (document) was not. (Copy)
VIN comparison	The vehicle identification number (VIN) was read from the vehicle and its conformity with the submitted documents was confirmed by the undersigned during the inspection.
Inspection	The inspection conditions were sufficient for the assessment of the vehicle. Lifting equipment and/or a pit were available for examining the vehicle.
Test drive	A short maneuvering and shunting exercise was carried out on the company premises.
Engine function test	An engine test run was performed.



Value reducing factors

No.	Component group	Description
1	Door - front left side	Door - Dent / paintcoat damage - Repair and paint

Order/Scope of Order

An order was placed to prepare a sales report for the described vehicle. This report includes the following:

- Description of key vehicle information
- Documentation of equipment features
(Delivery by third-party service providers)
- Documentation of damage, defects, missing parts
- Documentation of prior damage, unrepaired prior damage, repainting
- A brief visual or functional inspection of the equipment details, if possible.
(Functional testing of driver assistance systems is not included in the scope of services!)
- a photographic documentation of the vehicle

Basis for the order

This product is based on the guidelines for vehicle returns and valuations published by Alphabet Fleet GmbH. The expert makes the specific findings in each individual case objectively, within the framework of the prescribed standards, based on their own expertise.

The vehicle inspection takes place in a fully assembled, unassembled state.

Damage or defects that can only be detected during disassembly/diagnostic work or through further investigation remain within the realm of prognostic risk. An increased risk exists due to concealed defects caused by fraudulent misrepresentation and which were not identifiable by the expert.

Damage or defects resulting from normal use or wear and tear of the vehicle will be accepted in accordance with the applicable standard.

There was no explicit identification or monetary consideration of the expected features within the product.

Features which, in their nature and extent, slightly exceed normal use but do not constitute unacceptable damage, will be documented and indicated as signs of wear, if applicable.

Damage or defects that, according to the applicable standard, can no longer be attributed to normal use or wear and tear are listed under "Value Reducing Factors" in the product description.

Depending on the product specification, a monetary ID can be provided. If this takes place, the costs can be 100% d or pro rata depending on the vehicle's age and mileage.

Previous damages

No apparent prior damage that had been repaired could be found on the vehicle.



Figure 1: Diagonal front (left)



Figure 2: Diagonal front (right)



Figure 3: Diagonal rear (left)



Figure 4: Diagonal rear (right)



Figure 5: Interior - front



Figure 6: Interior - rear



Figure 7: Instrument cluster



Figure 8: Instrument panel



Figure 9: Interior 360° view



Figure 10: Cargo area



Figure 11: VIN



Figure 12: Mounted tyres



Figure 13: Documents

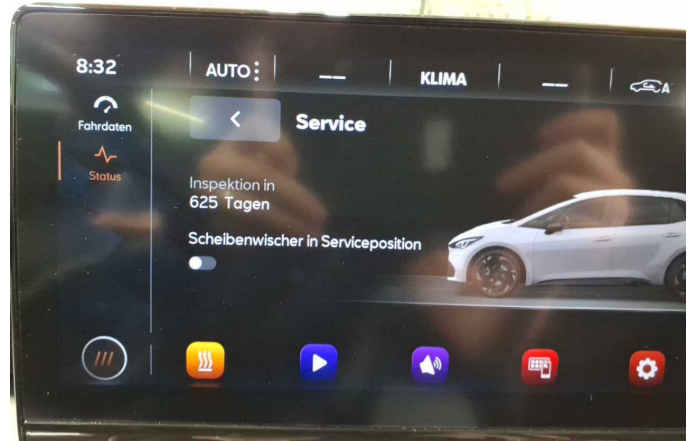


Figure 14: Documents



Figure 15: Documents

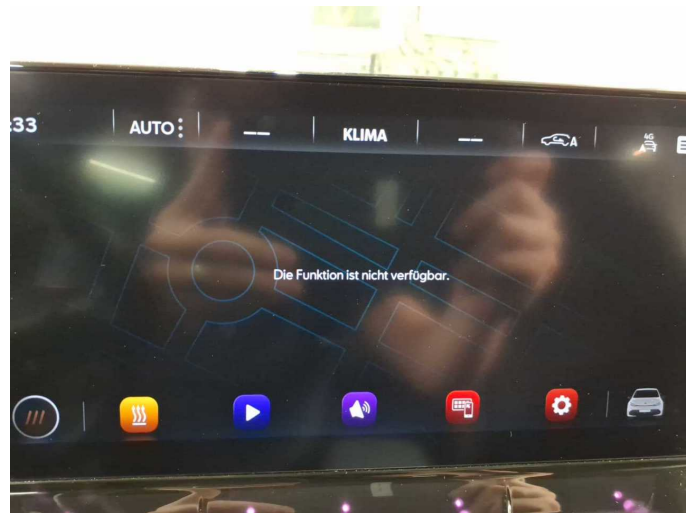


Figure 16: Navigation



Figure 17: Misc.



Figure 18: Misc.



Figure 19: Misc.



Figure 20: Misc.



Figure 21: Misc.



Figure 22: Misc.



Figure 23: Misc.

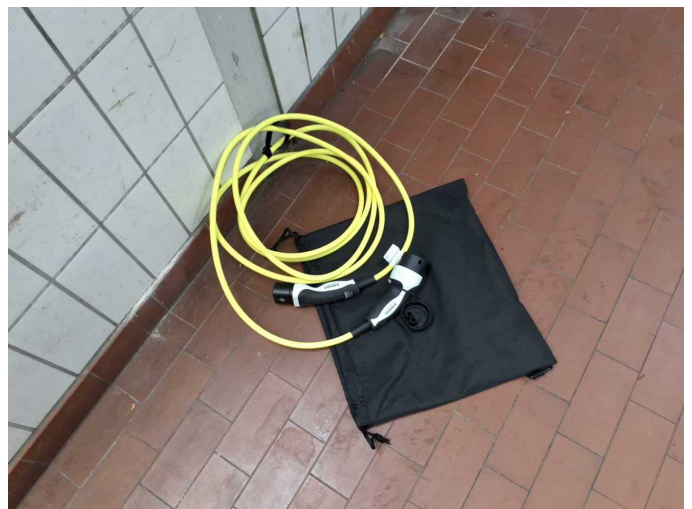


Figure 24: Misc.



Figure 25: Misc.

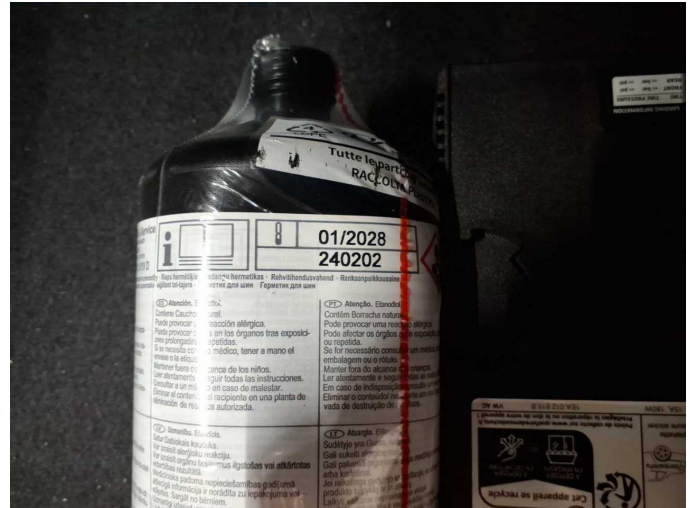


Figure 26: Misc.



Figure 27: Misc.



Figure 28: Misc.



Figure 29: Misc.



Figure 30: Misc.

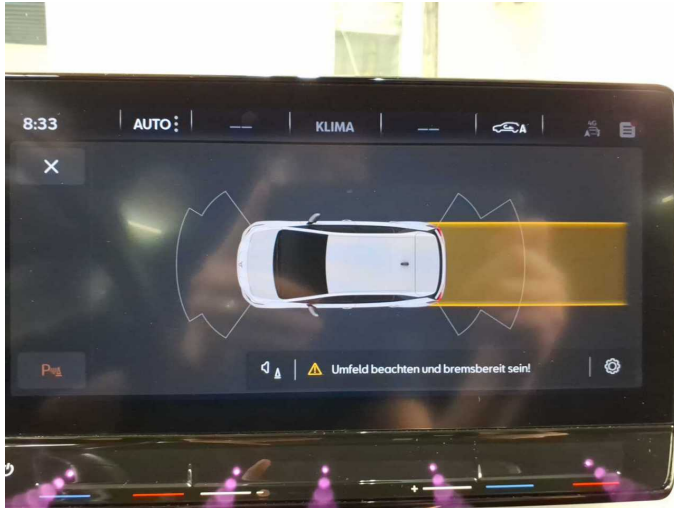


Figure 31: Misc.



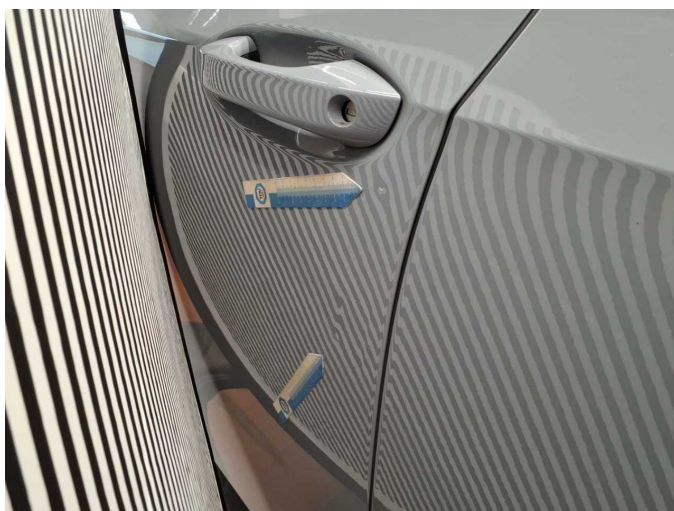
Damage 1: Door - front left side: Door - Dent / paintcoat damage - Repair and paint



Damage 1: Door - front left side: Door - Dent / paintcoat damage - Repair and paint



Damage 1: Door - front left side: Door - Dent / paintcoat damage - Repair and paint



Damage 1: Door - front left side: Door - Dent / paintcoat damage - Repair and paint