

Expertise

Protocol number: 46181668
Order No. / Reference: 26445940
Inspection date: 26 Jun 2026

Manufacturer: Mercedes-Benz

Model: C 220 d T 9G-TRONIC Avantgarde Advanced

VIN: W1KAH0EB6RF159127



Vehicle details

Manufacturer / Type / Model / Equipment

Mercedes-Benz C 220 d T 9G-TRONIC Avantgarde Advanced

Vehicle Identification number W1KAH0EB6RF159127

Mileage (Read) 127,661 km

First registration 25 Mar 2024

Number of holders 1

Power / Engine displacement 147 kw / 1,993 ccm

Fuel type / Cylinder Hybrid Diesel / E / 4

Gearbox / Number of gears Automatic / 9

Type of drive Rear drive

Type of vehicle Station wagon

Colour / colour code Schwarz

Doors / Seats 5 / 5

Upholstery type Artificial leather

Colour of upholstery Black



Vehicle details

Maintenance booklet / proof	digital evidence / incomplete	Next maintenance in	0 Tag(e)
Last service on / at	10/2025 at 102,687 km		
Key is / should be	2 / 2	FZG documents	ZB#2 (B) was available (copy), ZB#1 (S) was not available.
		Letter No.	HB190094
Previous damage / Accident	Detectable	Repainting	None detectable
Inspection conditions	sufficient	Lifting equipment / pit	No
Test drive	Not performed	Engine function test	Performed
Manufacturer key number/ type code number	2222 / AYH 00377		
Emission standard	EURO6;WLTP;EA;PI/CI;M, N1, N2	fine dust sticker	
Permitted total weight	2,400 kg	Empty weight	

Tyres

Mounted tyres

#	Tyre size	Type of tyre	Manufacturer	Tread depth
1)	225/50 R17 98H	Winter tyres on Light alloy	Pirelli	5mm / 5mm
2)	225/50 R17 98H	Winter tyres on Light alloy	Pirelli	4mm / 4mm

Additional tyres

#	Tyre size	Type of tyre	Manufacturer	Tread depth
1)	225/45 R18 95Y	Summer tyres on Light alloy	Michelin	5mm / 5mm
2)	245/40 R18 97Y	Summer tyres on Light alloy	Michelin	3mm / 3mm

Replacement

Typ	Tyre size	Type of tyre	Manufacturer	Tread depth
	Tirefit	Expiration date 04/2029		

Legend: Tread depth information for the left tire is listed first, for the right tire it is listed second on the axle in the direction of travel.



Equipment

Standard equipment

- Adaptive Highbeam Assist
- Airbag: Automatic passenger airbag deactivation
- Airbag: Side airbag for driver and front passenger
- Ambient lighting with 64 light colors
- Left and right exterior mirrors are heated and electrically adjustable
- Roof rails in polished aluminum
- Double cup holder at the front
- EASY-PACK tailgate
- Driver display
- Electric windows (4-way)
- Fingerprint scanner
- Speed Limit Assistant
- rear window wiper
- Interior headliner fabric crystal grey
- KEYLESS-GO start function
- THERMATIC automatic climate control with 2 climate zones
- Front headrests
- Paint finish: Solid
- LED High Performance Headlights
- Mercedes-Benz emergency call system
- Center console in high-gloss black
- Package: Storage
- Package: Avantgarde Advanced (00U Remote Services - 70B Warning vest for driver - P14 AVANTGARDE Interior - P15 AVANTGARDE Exterior - PBG MBUX Navigation Premium - PDA Advanced Package)
- Package: Trunk Comfort
- Package: Mirror package
- Radio: Extended MBUX functions
- Radio accessories: Digital radio (DAB)
- Radio accessories: Central display
- Tire pressure monitoring system (TPMS)
- Windscreen wipers with rain sensor
- Seats: Heated seats for driver and front passenger
- Lane Keeping Assist, active
- Phone accessories: Smartphone integration
- Cruise control
- Fully digital instrument display
- High-visibility vest for drivers
- Central locking with remote control
- Airbag for driver and front passenger
- Airbag: Center airbag
- Airbag: Windowbag for driver and front passenger
- ATTENTION ASSIST
- Basic services
- Brake assist, active
- Diesel particulate filter
- DYNAMIC SELECT
- Electronic Stability Program (ESP)
- Chassis: AGILITY CONTROL chassis with selective damping system and lowered suspension
- Velour floor mats
- Transmission: 9-speed automatic, 9G-TRONIC
- Heated rear window
- ISOFIX child seat attachment with top tether in the rear
- Mechanical child safety lock for the rear doors
- Rear headrests (3)
- Fuel tank with larger volume 66 l
- Cargo area cover including EASY-PACK safety net
- Steering wheel: Multifunction sports steering wheel in leather
- Navigation: MBUX Navigation Premium (Pre-installation for navigation services - Package (control code) - Multimedia / Digital content - Hard disk navigation - Pre-installation for Live Traffic Information - Communication module (LTE) for the use of Mercedes me connect services)
- Package: Interior lighting package
- Package: Seating comfort
- Package: USB
- Radio: MBUX multimedia system
- Radio accessories: Communication module (LTE) for using Mercedes me connect services
- Remote Services
- Power steering
- Seats: Rear seat backrests foldable
- Phone accessories: Wireless charging system for mobile devices
- TIREFIT with tire inflation compressor
- Pre-installation for digital key handover
- Electronic immobilizer
- Decorative elements in diamond pattern, silver-grey



Extra equipment

- Airbag: Side airbags in the rear
- Fire extinguisher
- Center console diamond pattern silver grey
- Package: KEYLESS-GO Comfort Package (For T-Model) (KEYLESS-GO access and drive authorization system - electronic vehicle key: communicates with the vehicle within 2 meters of the respective vehicle door - door handles with chrome inserts - EASY-PACK luggage compartment lid)
- Package: Parking package with 360° camera (12 ultrasonic sensors: six each in the front and rear bumpers - 360° camera - Active Parking Assist with PARKTRONIC: detects parking spaces, assisted parking, assisted exiting, visual and acoustic warning of detected obstacles according to distance and position, display of camera and ultrasonic data in the central display, button for Active Parking Assist with PARKTRONIC - cross traffic warning - maneuvering braking - drive-away assist)
- Upholstery: ARTICO man-made leather
- Radio accessories: Pre-installation for MBUX Entertainment (integration of music streaming services (user account required): Spotify, Amazon Music, Apple Music, TIDAL, TuneIn (no user account required) - Extended radio information - Extended radio station tracking - Internet radio - Third-party convenience data volume)
- Auxiliary heating
- Type designation removed from trunk lid
- Heat-insulating dark tinted glass
- Active Distance Assist DISTRONIC
- Black fabric headliner
- Package: AVANTGARDE Advanced Plus (Driver's seat electrically adjustable with memory function: Driver and front passenger seats, steering column and exterior mirrors electrically adjustable and storable, seat fore/aft position and headrest height additionally electrically adjustable, 3 memory settings each for driver and front passenger, 4-way lumbar support for driver and front passenger, seat cushion depth adjustment with gapless cushion, PRE-SAFE positioning, Blind Spot Assist, Illuminated door sills with "Mercedes-Benz" lettering, Traffic Sign Assist, Ambient Lighting Plus)
- Package: Winter Package Plus with 43.2 cm (17") winter complete wheels (Winter Package - Winter complete wheels M+S 4-way 43.2 cm (17") light alloy wheels with 10 double-spoke design, vanadium silver painted with 225/50 R17 on 7 J x 17 ET44.5)
- Radio accessories: Advanced sound system (4 midrange speakers - 2 tweeters - 2 front bass speakers - 1 center speaker - 225 W amplifier power)
- Wheels: 45.7 cm (18") light alloy wheels in 5-spoke design (gloss-turned with front axle: 225/45 R 18 on 7.5 J x 18 ET 40, rear axle: 245/40 R 18 on 8.5 J x 18 ET 52)
- Wheels: Complete winter wheel sets fitted at the factory
- Extendable sun visors (with illuminated cosmetic mirror, swiveling and extendable to the side)
- Heat and noise insulating acoustic glass (for windshield and front doors)

Brief expert findings

Documents submitted	At the time of the inspection, the vehicle registration certificate Part 2 (title) was available, but the vehicle registration certificate Part 1 (document) was not. (Copy)
VIN comparison	The vehicle identification number (VIN) was read from the vehicle and its conformity with the submitted documents was confirmed by the undersigned during the inspection.
Inspection	The inspection conditions were sufficient for the assessment of the vehicle. No lifting equipment or pit was available for inspecting the vehicle. Therefore, inspection of the vehicle's underside was only possible to a limited extent.
Test drive	No test drive/shunting maneuver was carried out during the inspection of the vehicle.
Engine function test	An engine test run was performed.

Value reducing factors

No.	Component group	Description
1	Wheel / tyres	Tyre - rear right side - Does not meet the leasing specifications - Replace
2	Wheel / tyres	Tyre - rear left side - Does not meet the leasing specifications - Replace
3	2nd wheel set	1 alloy rim - Scratch(es) - Loss in value
4	2nd wheel set	1 alloy rim - Scratch(es) - Loss in value
5	2nd wheel set	1 alloy rim - Scratch(es) - Loss in value
6	Misc.	Inspection / maintenance - Expired - Perform
7	Rear bumper	Rear bumper - Scratched - Paint
8	Front bumper	Front bumper - Scratched - Paint



Wear and tear

No.	Component group	Description
1	Bonnet	Bonnet - Stone chips - No deduction
2	Vehicle glazing	Windscreen - Stone chips - No deduction
3	Interior	Interior - Scratch(es) - No deduction

The vehicle shows signs of wear and tear commensurate with its age and use.

Previous damages

No.	Previous damage	Extent of damage (Net)
1	Front, Provided by user / customer, from 23 Apr 2024	1.522,07 €

Order/Scope of Order

An order was placed to prepare a sales report for the described vehicle. This report includes the following:

- Description of key vehicle information
- Documentation of equipment features
(*Delivery by third-party service providers*)
- Documentation of damage, defects, missing parts
- Documentation of prior damage, unrepaired prior damage, repainting
- A brief visual or functional inspection of the equipment details, if possible.
(*Functional testing of driver assistance systems is not included in the scope of services!*)
- a photographic documentation of the vehicle

Basis for the order

This product is based on the guidelines for vehicle returns and valuations published by Alphabet Fleet GmbH. The expert makes the specific findings in each individual case objectively, within the framework of the prescribed standards, based on their own expertise.

The vehicle inspection takes place in a fully assembled, unassembled state.

Damage or defects that can only be detected during disassembly/diagnostic work or through further investigation remain within the realm of prognostic risk. An increased risk exists due to concealed defects caused by fraudulent misrepresentation and which were not identifiable by the expert.

Damage or defects resulting from normal use or wear and tear of the vehicle will be accepted in accordance with the applicable standard.

There was no explicit identification or monetary consideration of the expected features within the product.

Features which, in their nature and extent, slightly exceed normal use but do not constitute unacceptable damage, will be documented and indicated as signs of wear, if applicable.

Damage or defects that, according to the applicable standard, can no longer be attributed to normal use or wear and tear are listed under "Value Reducing Factors" in the product description.

Depending on the product specification, a monetary ID can be provided. If this takes place, the costs can be 100% d or pro rata depending on the vehicle's age and mileage.

Previous damages

According to available information previous damages were repaired at the vehicle. Traces of repairs, which allow conclusions about the area of repair, were not recognizable during the inspection.

Comments

- Die Unterbodenbesichtigung war nur ebenerdig & eingeschränkt möglich. Mehrkosten möglich.



Figure 1: Diagonal front (left)



Figure 2: Diagonal front (right)



Figure 3: Diagonal rear (left)



Figure 4: Diagonal rear (right)



Figure 5: Interior - front



Figure 6: Interior - rear



Figure 7: Instrument cluster



Figure 8: Instrument panel



Figure 9: Interior 360° view



Figure 10: Cargo area



Figure 11: VIN



Figure 12: Mounted tyres



Figure 13: Documents

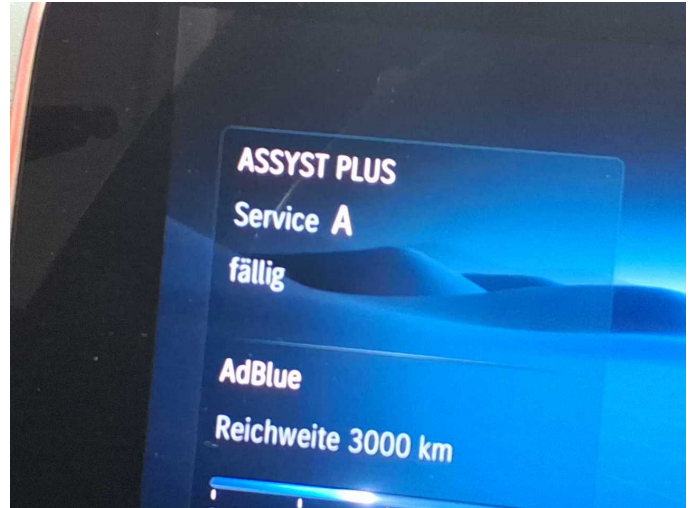


Figure 14: Documents



Figure 15: Documents



Figure 16: Additional tyres



Figure 17: Navigation

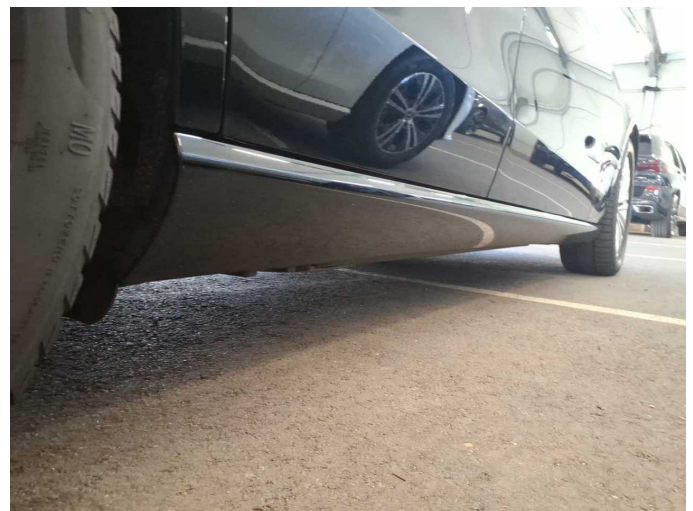


Figure 18: Misc.



Figure 25: Misc.



Figure 26: Misc.

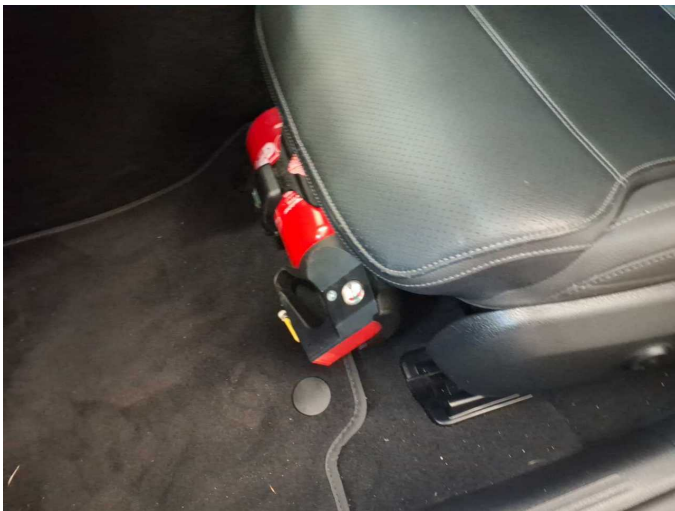


Figure 27: Misc.



Figure 28: Misc.



Figure 29: Misc.



Figure 30: Misc.



Figure 31: Misc.



Figure 32: Misc.



Figure 33: Misc.



Figure 34: Misc.



Damage 1: Wheel / tyres: Tyre - rear right side - Does not meet the leasing specifications - Replace



Damage 1: Wheel / tyres: Tyre - rear right side - Does not meet the leasing specifications - Replace



Damage 2: Wheel / tyres: Tyre - rear left side - Does not meet the leasing specifications - Replace



Damage 2: Wheel / tyres: Tyre - rear left side - Does not meet the leasing specifications - Replace



Damage 3: 2nd wheel set: 1 alloy rim - Scratch(es) - Loss in value



Damage 3: 2nd wheel set: 1 alloy rim - Scratch(es) - Loss in value



Damage 4: 2nd wheel set: 1 alloy rim - Scratch(es) - Loss in value



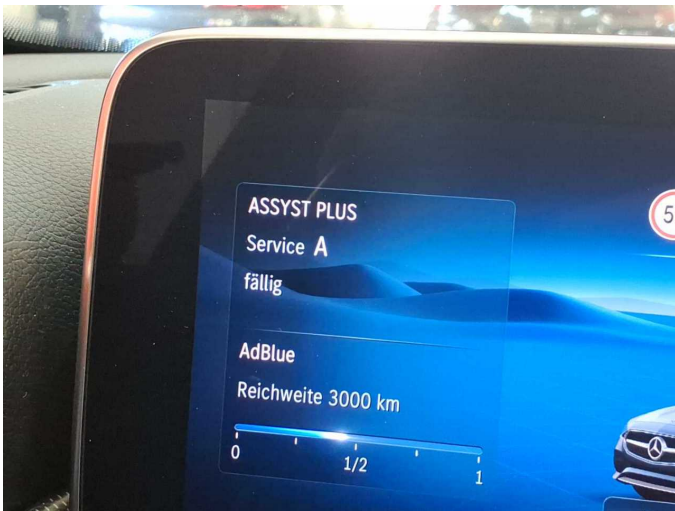
Damage 4: 2nd wheel set: 1 alloy rim - Scratch(es) - Loss in value



Damage 5: 2nd wheel set: 1 alloy rim - Scratch(es) - Loss in value



Damage 5: 2nd wheel set: 1 alloy rim - Scratch(es) - Loss in value



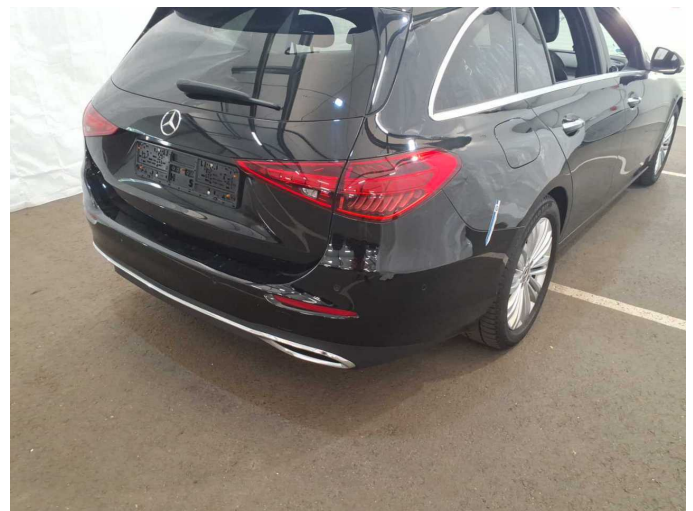
Damage 6: Misc.: Inspection / maintenance - Expired - Perform



Damage 7: Rear bumper: Rear bumper - Scratched - Paint



Damage 7: Rear bumper: Rear bumper - Scratched - Paint



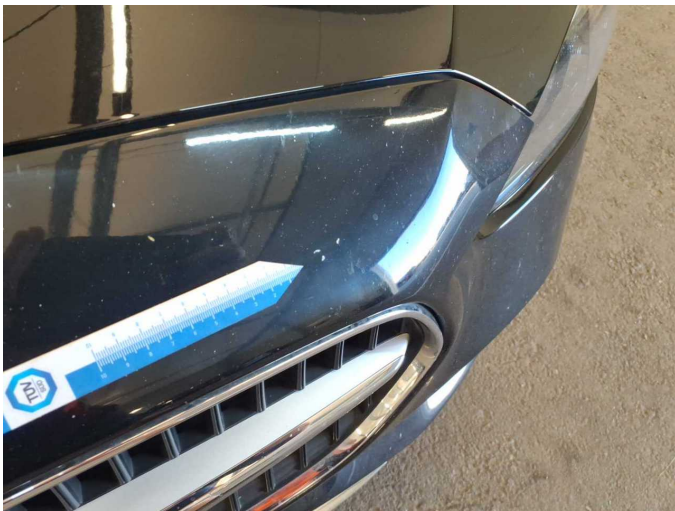
Damage 7: Rear bumper: Rear bumper - Scratched - Paint



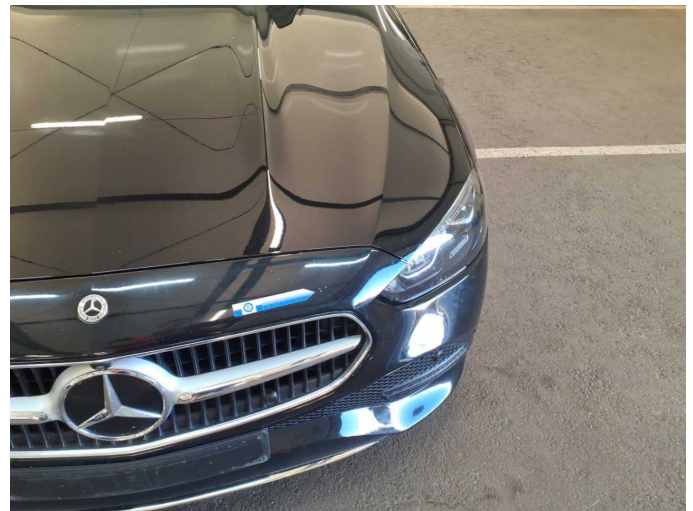
Damage 8: Front bumper: Front bumper - Scratched - Paint



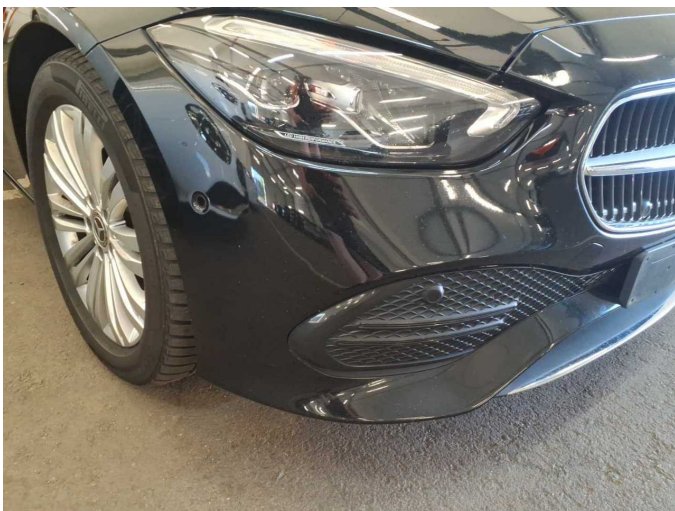
Damage 8: Front bumper: Front bumper - Scratched - Paint



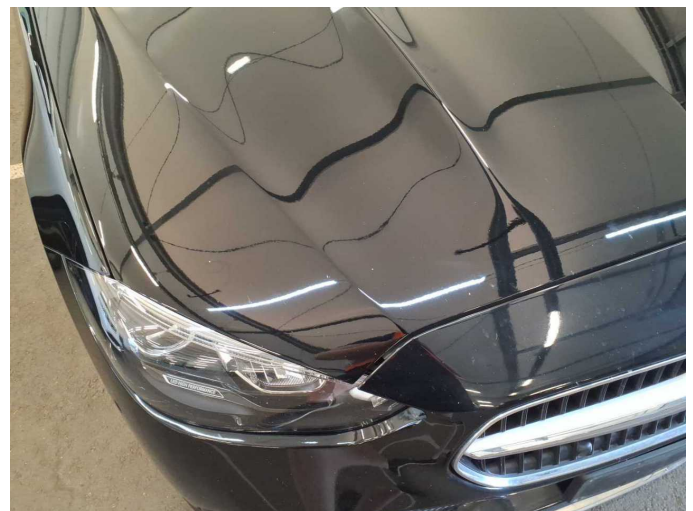
Damage 8: Front bumper: Front bumper - Scratched - Paint



Damage 8: Front bumper: Front bumper - Scratched - Paint



Damage 8: Front bumper: Front bumper - Scratched - Paint



Wear and tear 1: Bonnet: Bonnet - Stone chips - No deduction



Wear and tear 1: Bonnet: Bonnet - Stone chips - No deduction



Wear and tear 2: Vehicle glazing: Windscreen - Stone chips - No deduction



Wartungshistorie

(gemäß Auftraggeber Informationen)

Fahrgestellnummer: W1KAH0EB6RF159127

Hersteller / Modell: MERCEDES-BENZ MERCEDES-BENZ C 220 d T 9G-TRONIC
Avantgarde Advanced

Datum	KM-Stand	Beschreibung
13.10.2025	102.687	Regelwartungsdienst
20.06.2025	75.422	Regelwartungsdienst
24.01.2025	51.025	Regelwartungsdienst
10.09.2024	25.425	Regelwartungsdienst