

## Expertise

Protocol number: 45830570  
Order No. / Reference: 26373769  
Inspection date: 1 Jun 2026

Manufacturer: Seat

Model: CUPRA Born 150kW/58kWh

VIN: VSSZZK1ZNP016247



### Vehicle details

#### Manufacturer / Type / Model / Equipment

Seat CUPRA Born 150kW/58kWh

**Vehicle Identification number** VSSZZK1ZNP016247

**Mileage (Read)** 57,613 km

**First registration** 9 Aug 2022

**Number of holders** 1

**Next periodical technical inspection** 10/2027  
(Report on hand)

**Power / Engine displacement** 70 kw / 0 ccm

**Fuel type / Cylinder** Electric / 0

**Gearbox / Number of gears** Direct drive / 1

**Type of drive** Rear drive

**Type of vehicle** Saloon car

**Colour / colour code** Rayleigh Red Metallic

**Doors / Seats** 5 / 5

**Upholstery type** Cloth

**Colour of upholstery** Black-Grey

**Re-import** no

**readiness to drive** Roadworthy



## Vehicle details

<b>Maintenance booklet / proof</b>	Non-existent	<b>Next maintenance in</b>	85 Tag(e)
<b>Key is / should be</b>	2 / 2	<b>FZG documents</b>	ZB#2 (B) was available (copy), ZB#1 (S) was not available.
		<b>Letter No.</b>	GJ888872
<b>Previous damage / Accident</b>	None detectable	<b>Repainting</b>	Detectable
<b>Inspection conditions</b>	sufficient	<b>Lifting equipment / pit</b>	No
<b>Test drive</b>	Not performed	<b>Engine function test</b>	Performed
<b>readiness to drive</b>	Roadworthy		
<b>Manufacturer key number/ type code number</b>	7593 / ASO 00001		
<b>Emission standard</b>	2017/1151;WLTP;reine Elektrofz	<b>fine dust sticker</b>	
<b>Permitted total weight</b>	2,280 kg	<b>Empty weight</b>	

## Tyres

### Mounted tyres

#	Tyre size	Type of tyre	Manufacturer	Tread depth
1)	215/55 R18 99V	All-season tyres on Light alloy	Pirelli	4mm / 4mm
2)	215/55 R18 99V	All-season tyres on Light alloy	Pirelli	5mm / 5mm

### Replacement

Typ	Tyre size	Type of tyre	Manufacturer	Tread depth
Tirefit		Expiration date 03/2026		

**Legend: Tread depth information for the left tire is listed first, for the right tire it is listed second on the axle in the direction of travel.**



## Equipment

### Standard equipment

- Airbag: Airbag for driver and front passenger (center airbag - side airbags for driver and front passenger)
- Ambient lighting in the front door trim (including footwell lighting)
- Electrically adjustable, folding and heated exterior mirrors (including passenger-side mirror lowering function)
- third brake light
- CCS charging socket
- CUPRA Drive Profile (driving profiles can be individually selected - Range, Comfort, Performance, Individual)
- CUPRA lettering on tailgate
- CUPRA side skirts in Liquid Grey
- Decorative elements (decorative element on instrument panel Black, decorative stitching in Copper - decorative inlay in front doors, Dinamica Granite Grey, made from recycled materials - decorative elements in Copper)
- Luggage compartment lighting
- Speed limiter
- rear window wiper
- Rear bumper and diffuser in body color (with Liquid Grey accents)
- Keyless Go (engine start/stop button)
- Air conditioning: Climatronic with electronic temperature control (separate for driver and front passenger, with stationary air conditioning)
- Mode 3 Type 2 charging cable, 16 A
- Lights: Full headlights (full LED headlights with light sensor and automatic headlight control, cornering light function and bad weather light - full LED taillights with Infinite Light; dynamic LED light strip at the rear - turn signals with LED technology integrated into exterior mirrors including welcome light projection under the exterior mirrors - Ceremony Light)
- Progressive steering
- Radio: Multimedia system (2 USB-C charging ports for the 2nd row of seats - 5 speakers - Virtual Cockpit-5, 3" fully digital instrument cluster - antenna for FM reception - Bluetooth interface with integrated hands-free system and audio streaming - Android Auto, Apple CarPlay incl. Full Link Wireless - 2 USB-C ports in the front - DAB+ - infotainment system with 12" color touchscreen - voice control - CUPRA CONNECT)
- Seats: Driver's seat with height adjustment
- Sun visors with illuminated makeup mirror
- Sport pedals in aluminum look
- 12V socket in the luggage compartment
- Ultrasonic parking aid front and rear
- Front Assist area monitoring system with City Emergency Braking function
- Airbag: Passenger airbag deactivation
- Airbag: Head airbag system, front and rear
- Exterior mirrors: aspherical on driver's side, convex on passenger's side
- Exterior mirror housing in Liquid Grey
- Battery warranty 8 years, maximum 160,000 km
- C-pillar with CUPRA design element
- CUPRA CONNECT (prepared for activation of the security/ assistance and remote access service packages)
- CUPRA e-Sound (AVAS Acoustic Vehicle Alert System, acoustic vehicle warning system) from 0-50 km/h
- Black headliner
- Electronic parking brake including auto-hold function
- Electronic Stability Control (ESC) (Anti-lock Braking System (ABS) - Traction Control System (ASR))
- Electric window regulator with anti-pinch protection and one-touch function
- Transmission: 1-speed automatic
- Rear spoiler in car color
- Interior mirror automatically dimming
- ISOFIX child seat restraint system, in the 2nd row left and right as well as on the front passenger seat (i-Size compatible - incl. top tether anchor points at the rear)
- Headrests, 2 front
- Headrests, 3 rear
- Steering wheel: CUPRA Supersport multifunction steering wheel in leather (heated)
- Front center armrest (in Dinamica Granite Grey, front, made from recycled materials)
- Center console with integrated storage compartment and cup holder (including roller shutter, in black)
- Fatigue detection
- Emergency call service (no registration required - service is activated upon delivery)
- Rain sensor
- Tire pressure monitoring system
- Wheels: CYCLONE 7.5J x 18" alloy wheels (tires 215/55 R 18 with Tyre Fit)
- Seat belts - front and rear (warning buzzer and warning light for unfastened seat belts)
- Seats: CUPRA front sport bucket seats (made of SEAQUAL Yarn fabric, Black)
- Seats: Rear seat backrest asymmetrically split and foldable
- Lane departure warning system
- Front bumper in body color (with air intakes in Liquid Grey and trim in Copper)
- Electronic immobilizer
- thermal insulation glazing



### Extra equipment

- Paint finish: Metallic

### Brief expert findings

Documents submitted	At the time of the inspection, the vehicle registration certificate Part 2 (title) was available, but the vehicle registration certificate Part 1 (document) was not. (Copy)
VIN comparison	The vehicle identification number (VIN) was read from the vehicle and its conformity with the submitted documents was confirmed by the undersigned during the inspection.
Inspection	The inspection conditions were sufficient for the assessment of the vehicle. No lifting equipment or pit was available for inspecting the vehicle. Therefore, inspection of the vehicle's underside was only possible to a limited extent.
Test drive	No test drive/shunting maneuver was carried out during the inspection of the vehicle.
Engine function test	An engine test run was performed.
readiness to drive	The vehicle was roadworthy at the time of inspection.

### Value reducing factors

No.	Component group	Description
1	Misc.	Inspection / maintenance (Wartungsnachweis nicht vorhanden) - No evidence - No deduction
2	Wheel / tyres	Tyres - complete set - Differs from the original configuration - No deduction
3	Equipment	Tirefit filler - Expired - Replace
4	Wheel / tyres	Alloy rim - front right side (Mit Materialabtrag, Großflächig verkratzt) - Scratched - Replace

### Wear and tear

No.	Component group	Description
1	Vehicle glazing	Windscreen - Stone chips - No deduction
2	Bonnet	Bonnet - Stone chips - No deduction
3	Front bumper	Front bumper - Stone chips - No deduction
4	Interior	Interior - Scratch(es) - No deduction
5	Rear bumper	Rear bumper - Scratch(es) - No deduction

The vehicle shows signs of wear and tear commensurate with its age and use.

### Missing parts

#### Description

Documents - Service book (Digitaler Nachweis)  
Equipment - charging cable

### Repainting

#### No. Repainting

- 1 Side panel - rear left side, Side panel - rear right side, Professionally carried out, Invoice of repair done Non-existent

### Paint coat thickness measurement

Side panel - rear left side	163 µm	Side panel - rear right side	176 µm
-----------------------------	--------	------------------------------	--------



## Order/Scope of Order

An order was placed to prepare a sales report for the described vehicle. This report includes the following:

- Description of key vehicle information
- Documentation of equipment features  
*(Delivery by third-party service providers)*
- Documentation of damage, defects, missing parts
- Documentation of prior damage, unrepaired prior damage, repainting
- A brief visual or functional inspection of the equipment details, if possible.  
*(Functional testing of driver assistance systems is not included in the scope of services!)*
- a photographic documentation of the vehicle

## Basis for the order

This product is based on the guidelines for vehicle returns and valuations published by Alphabet Fleet GmbH. The expert makes the specific findings in each individual case objectively, within the framework of the prescribed standards, based on their own expertise.

The vehicle inspection takes place in a fully assembled, unassembled state.

Damage or defects that can only be detected during disassembly/diagnostic work or through further investigation remain within the realm of prognostic risk. An increased risk exists due to concealed defects caused by fraudulent misrepresentation and which were not identifiable by the expert.

Damage or defects resulting from normal use or wear and tear of the vehicle will be accepted in accordance with the applicable standard.

There was no explicit identification or monetary consideration of the expected features within the product.

Features which, in their nature and extent, slightly exceed normal use but do not constitute unacceptable damage, will be documented and indicated as signs of wear, if applicable.

Damage or defects that, according to the applicable standard, can no longer be attributed to normal use or wear and tear are listed under "Value Reducing Factors" in the product description.

Depending on the product specification, a monetary ID can be provided. If this takes place, the costs can be 100% d or pro rata depending on the vehicle's age and mileage.

## Previous damages

No apparent prior damage that had been repaired could be found on the vehicle.

## Comments

- Die Unterbodenbesichtigung war nur ebenerdig & eingeschränkt möglich. Mehrkosten möglich.



Figure 1: Diagonal front (left)



Figure 2: Diagonal front (right)



Figure 3: Diagonal rear (left)



Figure 4: Diagonal rear (right)



Figure 5: Interior - front



Figure 6: Interior - rear



Figure 7: Instrument cluster



Figure 8: Instrument panel



Figure 9: Interior 360° view

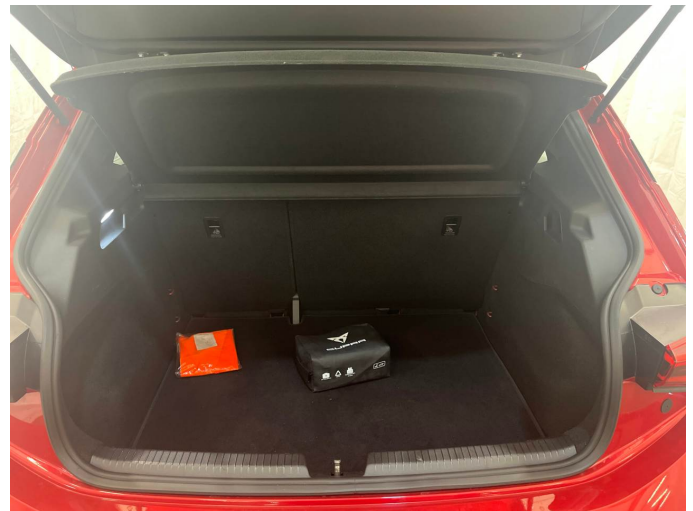


Figure 10: Cargo area

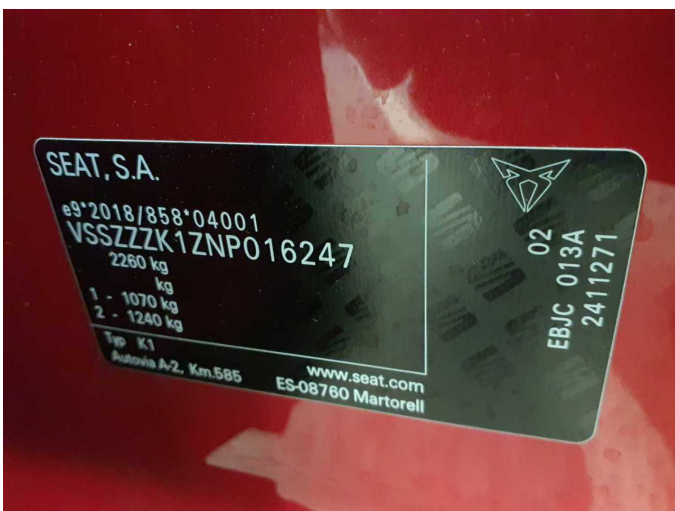


Figure 11: VIN



Figure 12: Mounted tyres



Figure 13: Documents



Figure 14: Documents



Figure 15: Documents



Figure 16: Navigation

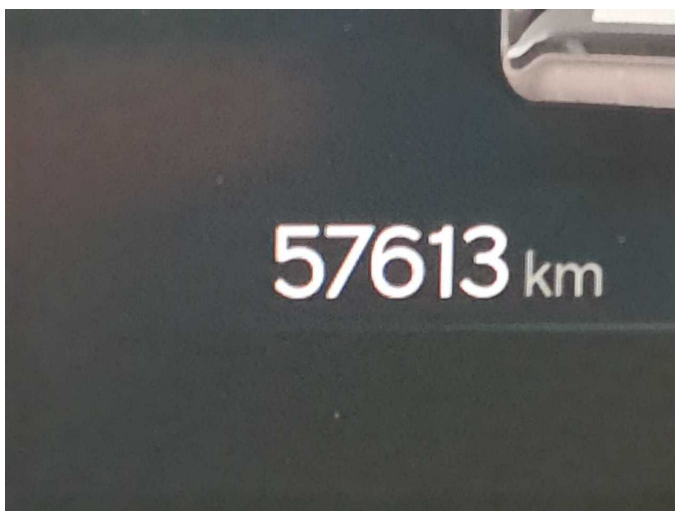


Figure 17: Misc.



Figure 18: Misc.



Figure 19: Misc.



Figure 20: Misc.

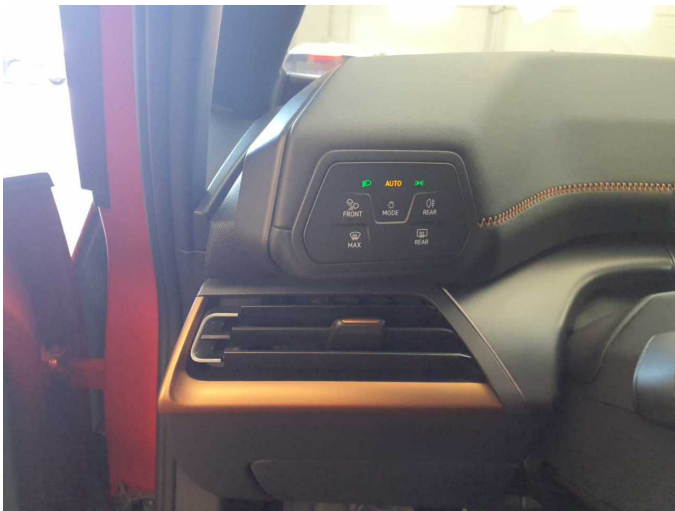


Figure 21: Misc.



Figure 22: Misc.



Figure 23: Misc.

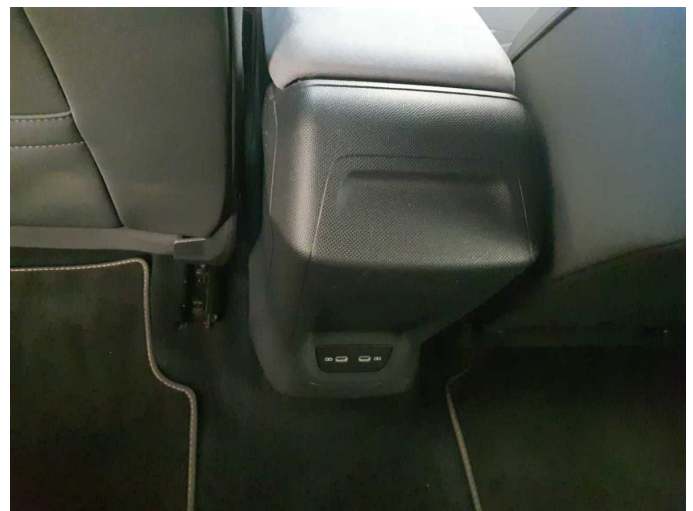


Figure 24: Misc.

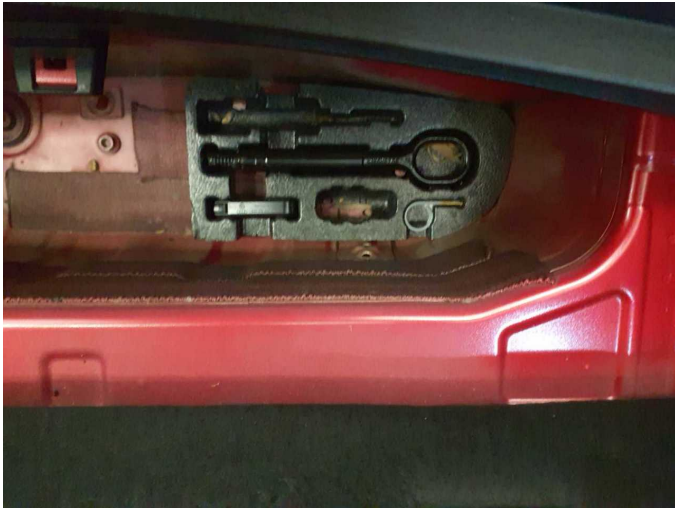


Figure 25: Misc.



Figure 26: Misc.

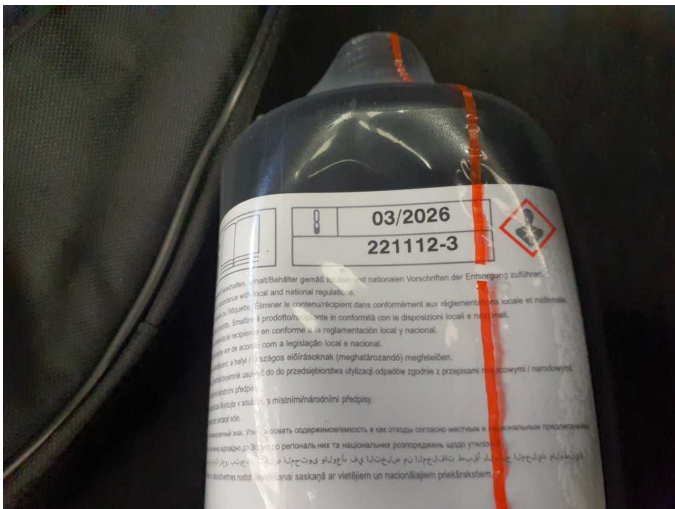


Figure 27: Misc.



Figure 28: Misc.



Figure 29: Misc.

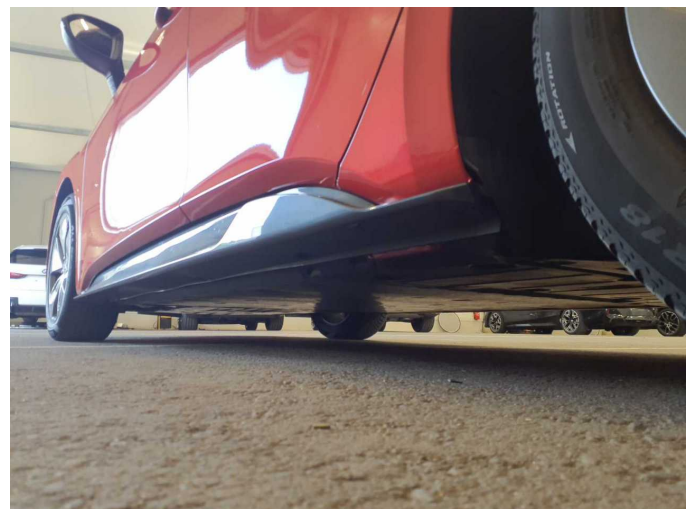


Figure 30: Misc.



Figure 31: Misc.



Damage 3: Equipment: Tirefit filler - Expired - Replace



Damage 4: Wheel / tyres: Alloy rim - front right side (Mit Materialabtrag, Großflächig verkratzt) - Scratched - Replace



Damage 4: Wheel / tyres: Alloy rim - front right side (Mit Materialabtrag, Großflächig verkratzt) - Scratched - Replace



Damage 4: Wheel / tyres: Alloy rim - front right side (Mit Materialabtrag, Großflächig verkratzt) - Scratched - Replace



Damage 4: Wheel / tyres: Alloy rim - front right side (Mit Materialabtrag, Großflächig verkratzt) - Scratched - Replace



**Missing part 2:** Equipment: charging cable - Missing - Replace



**Missing part 2:** Equipment: charging cable - Missing - Replace



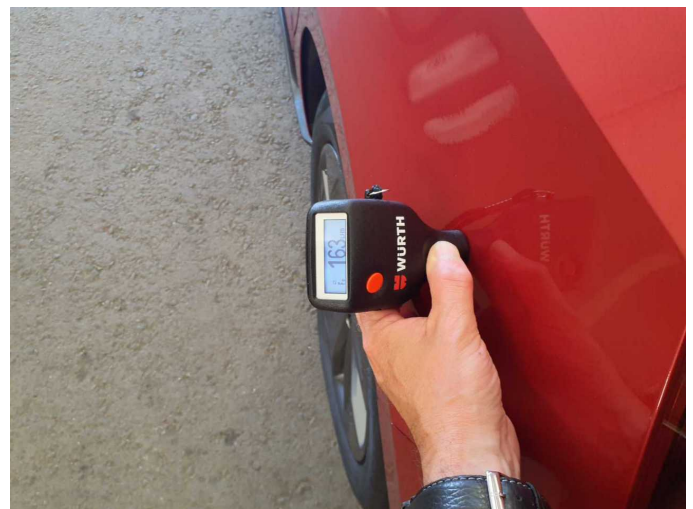
**Repainting 1:** Side panel - rear left side, Side panel - rear right side



**Repainting 1:** Side panel - rear left side, Side panel - rear right side



**Repainting 1:** Side panel - rear left side, Side panel - rear right side



**Repainting 1:** Side panel - rear left side, Side panel - rear right side