

Expertise

Protocol number: 46219577
Order No. / Reference: 26423631
Inspection date: 29 Jun 2026

Manufacturer: Volkswagen

Model: Passat Variant 1.4 TSI Plug-In-Hybrid DSG GTE

VIN: WVVZZZ3CZPE041561



Vehicle details

Manufacturer / Type / Model / Equipment

Volkswagen Passat Variant 1.4 TSI Plug-In-Hybrid DSG GTE

Vehicle Identification number	WVVZZZ3CZPE041561
Mileage (Read)	123,901 km
First registration	16 Mar 2023
Number of holders	1
Next periodical technical inspection	03/2028 (Report not on hand)

Power / Engine displacement	115 kw / 1,395 ccm
Fuel type / Cylinder	Hybr.B/E ext.aufll / 4
Gearbox / Number of gears	Automatic / 6
Type of drive	Front drive
Type of vehicle	Station wagon

Colour / colour code	Deep Black Perleffekt (C9X)
Doors / Seats	5 / 5
Upholstery type	Cloth
Colour of upholstery	Anthracite-Grey



Vehicle details

Maintenance booklet / proof	digital proof / complete	Next maintenance in	11,400 km
Last service on / at	05/2026 at 120,292 km		
Key is / should be	2 / 2	FZG documents	ZB#2 (B) was available (copy), ZB#1 (S) was not available.
		Letter No.	GS398972
Previous damage / Accident	Detectable	Repainting	Detectable
Inspection conditions	sufficient	Lifting equipment / pit	yes
Test drive	Not performed	Engine function test	Performed
Manufacturer key number/ type code number	0603 / BRZ 00137		
Emission standard	EURO6;WLTP;AP;PI/CI; M, N1 I	fine dust sticker	
Permitted total weight	2,270 kg	Empty weight	

Tyres

Mounted tyres

#	Tyre size	Type of tyre	Manufacturer	Tread depth
1)	215/55 R17 94V	Summer tires (with run-flat tires) on Light alloy	Pirelli	4mm / 4mm
2)	215/55 R17 94V	Summer tires (with run-flat tires) on Light alloy	Pirelli	4mm / 4mm

Additional tyres

#	Tyre size	Type of tyre	Manufacturer	Tread depth
1)	215/55 R17 94H	Winter tires (with run-flat tires) on Light alloy	Pirelli	5mm / 5mm
2)	215/55 R17 94H	Winter tires (with run-flat tires) on Light alloy	Pirelli	5mm / 5mm

Legend: Tread depth information for the left tire is listed first, for the right tire it is listed second on the axle in the direction of travel.



Equipment

Standard equipment

- Airbag for driver and front passenger
- Anti-lock braking system (ABS)
- Adaptive Cruise Control (ACC) "stop & go", including speed limiter
- third brake light
- Headliner in Mistral Grey
- Tachometer
- Parking aid - warning signals for obstacles in the front and rear area
- Automatic headlight control
- Windscreen made of laminated safety glass, heat and sound insulating
- Transmission: 6-speed DSG
- rear window wiper
- Interior mirror automatically dimming
- Cable for AC charging station
- Rear headrests (3)
- Front headrests
- Steering wheel: Multifunction sports steering wheel in leather, with paddle shifters
- "Premium" multifunction display with multicolor screen
- Fatigue detection
- Mains charging cable for household socket
- Mesh partition
- Emergency braking assistant "Front Assist" (for automatic distance control ACC up to 210 km/h)
- Upholstery: "Business" fabric
- Radio accessories: Digital radio reception DAB+
- Tire pressure monitoring system (passive)
- Keyless start system without safe locking
- Power steering
- Seats: Comfort seats in the front
- Seats: Front seats are height-adjustable
- Start-stop system
- Bumpers in body color
- Textile floor mats
- Warning tone and light for unfastened seat belts front and rear
- Airbag, head airbag system for front and rear passengers
- App-Connect Wireless
- Cup holders (2) front
- Hill start assist
- Chrome trim on the side windows
- black roof rails
- e-Sound
- Entry/warning lights in LED technology in the front doors
- Electronic parking brake including auto-hold function
- Remote release for luggage compartment lid
- Pedestrian detection
- Adjustable luggage compartment floor
- Rear window heated
- Interior lights with delayed shut-off and dimming function
- ISOFIX mounting points
- Air conditioning system "Air Care Climatronic" with 3-zone temperature control and active combination filter
- LED taillights
- Headlight range control
- Front center armrest, height and length adjustable, with storage box
- Navigation system "Discover Media" incl. "Streaming & Internet"
- Non-smoking version
- Emergency call service
- Package: Light and Sight Package "Plus"
- Proactive occupant protection system in conjunction with "Front Assist"
- Rear bench seat, undivided, backrest asymmetrically split and foldable, with center armrest
- Seat belts: Three-point automatic seat belt
- Seats: Lumbar support in the front
- Lane keeping assistant "Lane Assist"
- 12V power outlet on the rear of the center console
- Telephone interface
- First aid kit, warning triangle and high-visibility vest
- Electronic immobilizer
- Central locking with remote control



Extra equipment

- Exterior mirrors with ambient lighting and passenger-side mirror lowering function (foldable and heated - dimming on the driver's side)
- Luggage net
- compensation
- Paint finish: Pearl effect
- Package: "Easy Open & Close" package including safe locking (extendable and removable luggage compartment cover with electric opening - tailgate with sensor-controlled opening and closing, with remote unlocking - keyless locking and starting system "Keyless Access" with safe locking)
- Package: IQ.DRIVE without "Side Assist" and pedestrian detection in conjunction with Business Premium Package (DSG) (Dynamic Light Assist for LED matrix headlights, Travel Assist, Lane Assist and Emergency Assist, IQ.LIGHT - LED matrix headlights with LED daytime running lights, cornering lights and dynamic turn signals, dark red LED taillights with dynamic turn signals, dynamic headlight range control with dynamic cornering lights, rear fog light, reversing light, Park Assist including parking aid)
- Wheels: Tire Mobility Set omitted
- Wheels: Winter wheels (additional), light alloy, "Helsinki" 6.5 J x 17 (AirStop winter tires 215/55 R 17 H)
- Anti-theft alarm system (interior monitoring, backup horn and tow-away protection - illuminated make-up mirror in the sun visors, extendable sun visors)
- Removable luggage compartment protective mat (back of the rear seat backrest with black rubber coating)
- Package: "Business Premium" package incl. navigation (from Business trim level) (2 USB-C ports in the front, USB-C charging socket in the rear, 230V socket, App-Connect incl. wireless, Apple CarPlay, Android Auto, "Travel Assist" driver assistance system and "Lane Assist" lane keeping assist system, Air Care Climatronic with 3-zone temperature control, active combination filter and rear controls, lumbar support in the front, electric on the driver's side, massage function on the driver's side, "Rear View" reversing camera, heated windshield washer nozzles, Comfort telephone interface, inductive charging function, heated front seats)
- Package: Winter (front windshield washer nozzles automatically heated - front seats heated)
- Wheels: 4 "London" alloy wheels 7 J x 17 (AirStop tires 215/55 R 17 - wheel locks with enhanced theft protection - rear disc brakes, brake calipers in blue (only for GTE))
- Voice control
- "Comfort" telephone interface with inductive charging function (hands-free system)

Brief expert findings

Documents submitted	At the time of the inspection, the vehicle registration certificate Part 2 (title) was available, but the vehicle registration certificate Part 1 (document) was not. (Copy)
VIN comparison	The vehicle identification number (VIN) was read from the vehicle and its conformity with the submitted documents was confirmed by the undersigned during the inspection.
Inspection	The inspection conditions were sufficient for the assessment of the vehicle. Lifting equipment and/or a pit were available for examining the vehicle.
Test drive	No test drive/shunting maneuver was carried out during the inspection of the vehicle.
Engine function test	An engine test run was performed.

Value reducing factors

No.	Component group	Description
1	Boot lid / rear door	Boot lid - Glued / labelled - De-glue / neutralise
2	Wing mirror - right side	Cap - Scratch(es) - Smart repair
3	Wheel / tyres	Alloy rim - front right side - Scratch(es) - Loss in value
4	Door - front right side	Door - Dent / paintcoat damage - Repair and paint



Wear and tear

No.	Component group	Description
1	Bonnet	Bonnet - Stone chips - No deduction
2	Front bumper	Front bumper - Stone chips - No deduction
3	Body	Body (Waschanlagekratzer) - Scratch(es) - No deduction
4	Vehicle glazing	Windscreen - Stone chips - No deduction

The vehicle shows signs of wear and tear commensurate with its age and use.

Previous damages

No.	Previous damage	Extent of damage (Net)
1	Front, Side - left, Provided by user / customer	1.674,97 €

Repainting

No.	Repainting
1	Bonnet, Side panel - rear left side, Professionally carried out, Invoice of repair done Non-existent

Order/Scope of Order

An order was placed to prepare a sales report for the described vehicle. This report includes the following:

- Description of key vehicle information
- Documentation of equipment features
(*Delivery by third-party service providers*)
- Documentation of damage, defects, missing parts
- Documentation of prior damage, unrepaired prior damage, repainting
- A brief visual or functional inspection of the equipment details, if possible.
(*Functional testing of driver assistance systems is not included in the scope of services!*)
- a photographic documentation of the vehicle

Basis for the order

This product is based on the guidelines for vehicle returns and valuations published by Alphabet Fleet GmbH. The expert makes the specific findings in each individual case objectively, within the framework of the prescribed standards, based on their own expertise.

The vehicle inspection takes place in a fully assembled, unassembled state.

Damage or defects that can only be detected during disassembly/diagnostic work or through further investigation remain within the realm of prognostic risk. An increased risk exists due to concealed defects caused by fraudulent misrepresentation and which were not identifiable by the expert.

Damage or defects resulting from normal use or wear and tear of the vehicle will be accepted in accordance with the applicable standard.

There was no explicit identification or monetary consideration of the expected features within the product.

Features which, in their nature and extent, slightly exceed normal use but do not constitute unacceptable damage, will be documented and indicated as signs of wear, if applicable.

Damage or defects that, according to the applicable standard, can no longer be attributed to normal use or wear and tear are listed under "Value Reducing Factors" in the product description.

Depending on the product specification, a monetary ID can be provided. If this takes place, the costs can be 100% d or pro rata depending on the vehicle's age and mileage.



Previous damages

According to available information previous damages were repaired at the vehicle. Traces of repairs, which allow conclusions about the area of repair, were not recognizable during the inspection.



Figure 1: Diagonal front (left)



Figure 2: Diagonal front (right)



Figure 3: Diagonal rear (left)



Figure 4: Diagonal rear (right)



Figure 5: Interior - front



Figure 6: Interior - rear



Figure 7: Instrument cluster



Figure 8: Instrument panel



Figure 9: Interior 360° view



Figure 10: Cargo area



Figure 11: Cargo area

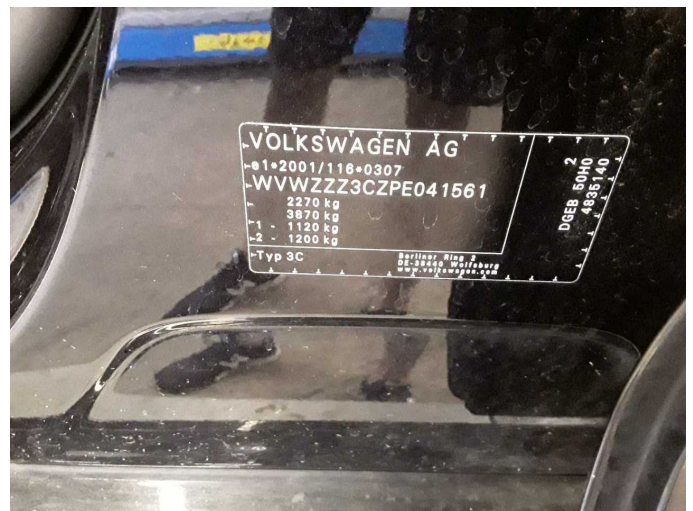


Figure 12: VIN



Figure 13: Mounted tyres



Figure 14: Documents



Figure 15: Additional tyres



Figure 16: Navigation



Figure 17: Misc.



Figure 18: Misc.



Figure 19: Misc.



Figure 20: Misc.



Figure 21: Misc.



Figure 22: Misc.



Figure 23: Misc.



Figure 24: Misc.



Figure 25: Misc.



Figure 26: Misc.



Figure 27: Misc.



Figure 28: Misc.

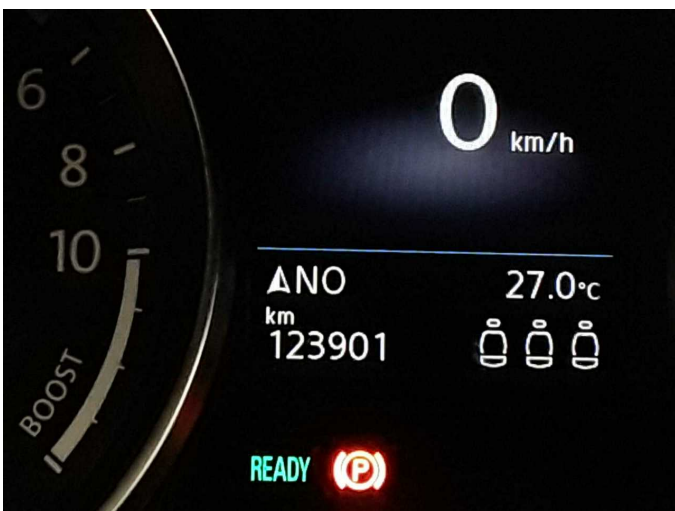


Figure 29: Misc.

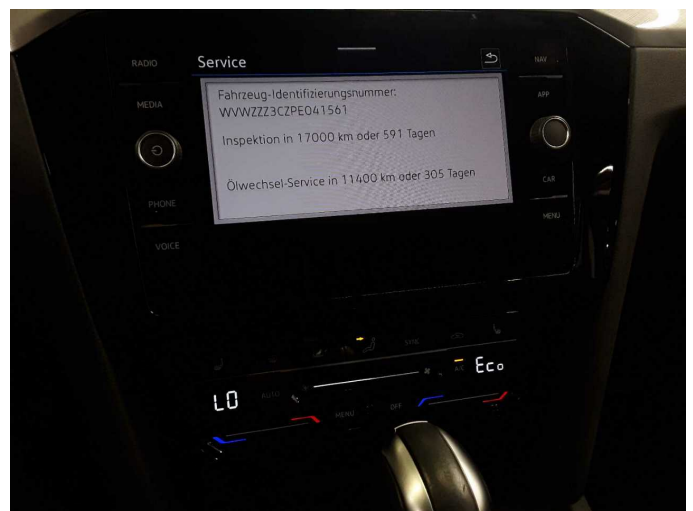


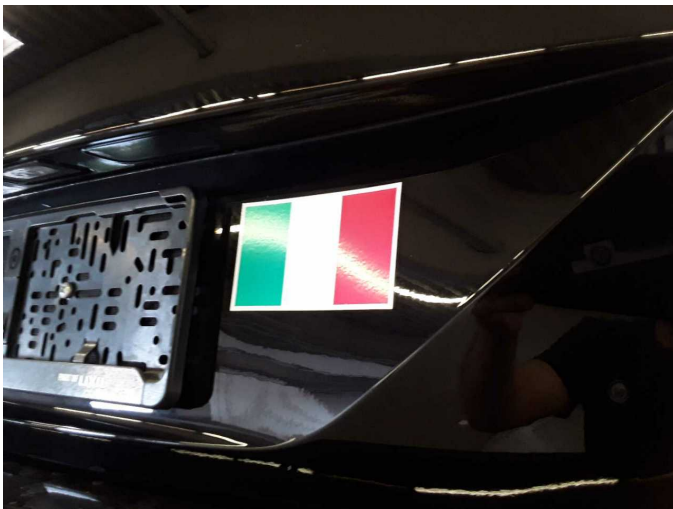
Figure 30: Misc.



Figure 31: Misc.



Damage 1: Boot lid / rear door: Boot lid - Glued / labelled - De-glue / neutralise



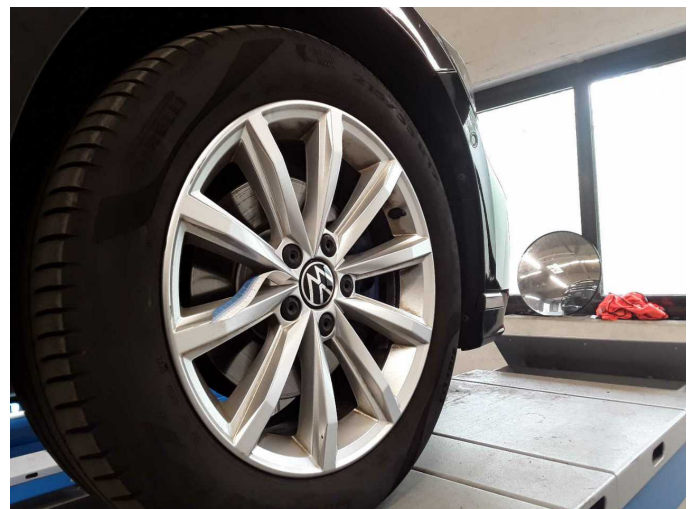
Damage 1: Boot lid / rear door: Boot lid - Glued / labelled - De-glue / neutralise



Damage 2: Wing mirror - right side: Cap - Scratch(es) - Smart repair



Damage 2: Wing mirror - right side: Cap - Scratch(es) - Smart repair



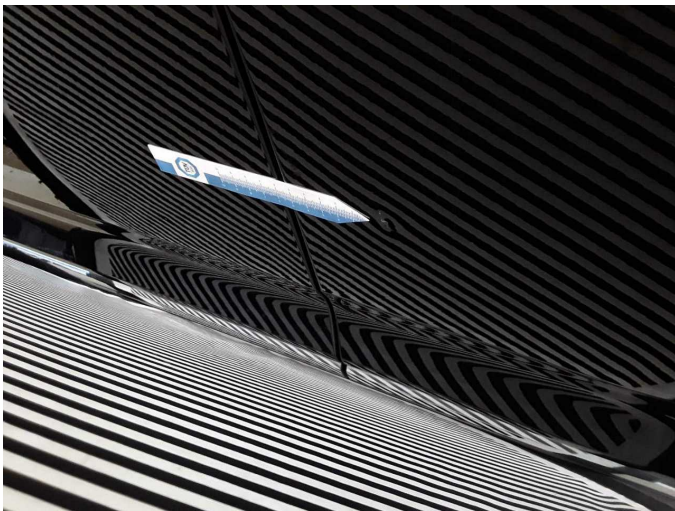
Damage 3: Wheel / tyres: Alloy rim - front right side - Scratch(es) - Loss in value



Damage 3: Wheel / tyres: Alloy rim - front right side - Scratch(es) - Loss in value



Damage 4: Door - front right side: Door - Dent / paintcoat damage - Repair and paint



Damage 4: Door - front right side: Door - Dent / paintcoat damage - Repair and paint



Wear and tear 1: Bonnet: Bonnet - Stone chips - No deduction



Wear and tear 1: Bonnet: Bonnet - Stone chips - No deduction



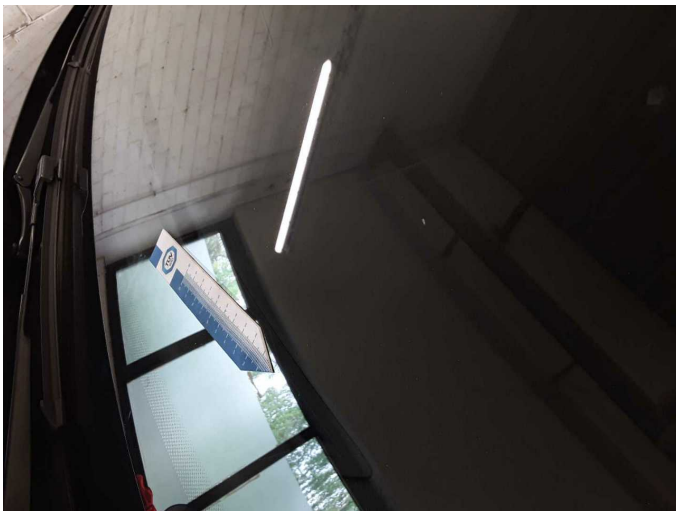
Wear and tear 2: Front bumper: Front bumper - Stone chips - No deduction



Wear and tear 2: Front bumper: Front bumper - Stone chips - No deduction



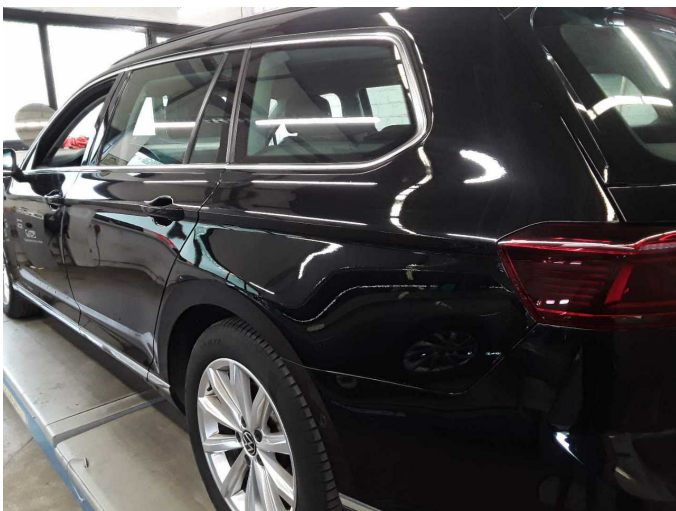
Wear and tear 4: Vehicle glazing: Windscreen - Stone chips - No deduction



Wear and tear 4: Vehicle glazing: Windscreen - Stone chips - No deduction



Repainting 1: Bonnet, Side panel - rear left side



Repainting 1: Bonnet, Side panel - rear left side



Repainting 1: Bonnet, Side panel - rear left side



Repainting 1: Bonnet, Side panel - rear left side



Wartungshistorie

(gemäß Auftraggeber Informationen)

Fahrgestellnummer: WVWZZZ3CZPE041561
Hersteller / Modell: VOLKSWAGEN VOLKSWAGEN Passat Variant 1.4 TSI Plug-In-Hybrid DSG GTE

Datum	KM-Stand	Beschreibung
04.05.2026	120.292	Getriebeöl ern/prüfen; Motoröl b. Wartung; Ölfilter ern; Ölwechsel; Wartung Sonstiges; Zündkerzen ern
17.03.2026	110.851	AU; Bremse Sonstiges; Bremsklötze vorne; Bremsscheiben + Klötze v; Bremsscheiben vorne; Regelwartungsdienst; Wartung Sonstiges
19.11.2025	101.397	Luftfiltereinsatz ern; Motoröl b. Wartung; Ölfilter ern; Ölwechsel; Wartung Sonstiges
04.09.2025	82.937	Motoröl b. Wartung; Ölfilter ern; Ölwechsel; Wartung Sonstiges
24.03.2025	69.891	Bremsflüssigkeit; Bremsflüssigkeit ern
26.11.2024	59.196	Getriebeöl ern/prüfen; Motoröl b. Wartung; Ölfilter ern; Regelwartungsdienst; Wartung Sonstiges; Zündkerzen ern
12.08.2024	46.112	Motoröl b. Wartung; Ölfilter ern; Ölwechsel; Wartung Sonstiges