

## Expertise

Protocol number: 45860123  
Order No. / Reference: 26384926  
Inspection date: 5 Jun 2026

Manufacturer: Mercedes-Benz

Model: GLB 220 d 8G-DCT Progressive

VIN: W1N4M1EB0PW291203



### Vehicle details

#### Manufacturer / Type / Model / Equipment

Mercedes-Benz GLB 220 d 8G-DCT Progressive

<b>Vehicle Identification number</b>	W1N4M1EB0PW291203
<b>Mileage (Read)</b>	138,248 km
<b>First registration</b>	11 Apr 2023
<b>Number of holders</b>	1
<b>Next periodical technical inspection</b> (Report on hand)	04/2028

<b>Power / Engine displacement</b>	140 kw / 1,950 ccm
------------------------------------	--------------------

<b>Fuel type / Cylinder</b>	Diesel / 4
-----------------------------	------------

<b>Gearbox / Number of gears</b>	Automatic / 8
----------------------------------	---------------

<b>Type of drive</b>	Front drive
----------------------	-------------

<b>Type of vehicle</b>	SUV
------------------------	-----

<b>Colour / colour code</b>	NACHTSCHWARZ UNILACK
-----------------------------	-------------------------

<b>Doors / Seats</b>	5 / 5
----------------------	-------

<b>Upholstery type</b>	Cloth / leather combination
------------------------	--------------------------------

<b>Colour of upholstery</b>	Black-Anthracite
-----------------------------	------------------



## Vehicle details

<b>Maintenance booklet / proof</b>	digital proof / complete	<b>Next maintenance in</b>	164 Tag(e)
<b>Last service on / at</b>	11/2025 at 119,875		
<b>Key is / should be</b>	2 / 2	<b>FZG documents</b>	ZB#2 (B) was available (copy), ZB#1 (S) was not available.
		<b>Letter No.</b>	GS687875
<b>Previous damage / Accident</b>	None detectable	<b>Repainting</b>	None detectable
<b>Inspection conditions</b>	sufficient	<b>Lifting equipment / pit</b>	No
<b>Test drive</b>	Not performed	<b>Engine function test</b>	Performed
<b>Manufacturer key number/ type code number</b>	2222 / ASE 00137		
<b>Emission standard</b>	EURO6;WLTP;AP;PI/CI; M, N1 I	<b>fine dust sticker</b>	
<b>Permitted total weight</b>	2,195 kg	<b>Empty weight</b>	

## Tyres

### Mounted tyres

#	Tyre size	Type of tyre	Manufacturer	Tread depth
1)	235/50 R19 99W	Summer tyres on Light alloy	Continental	4mm / 4mm
2)	235/50 R19 99W	Summer tyres on Light alloy	Continental	5mm / 5mm

**Legend: Tread depth information for the left tire is listed first, for the right tire it is listed second on the axle in the direction of travel.**



## Equipment

### Standard equipment

- Airbag for driver and front passenger
- Airbag: Side airbag for driver and front passenger
- Active Brake Assist
- Anti-lock braking system (ABS)
- ATTENTION ASSIST
- Heated exterior mirrors (left and right), electrically adjustable from inside
- Roof rails in polished aluminum
- Double cup holder
- Third brake light in LED technology
- ECO start/stop function
- Electronic Stability Program (ESP)
- Electric window regulators (4)
- Luggage net on driver and passenger seatbacks
- Transmission: 8G-DCT dual-clutch automatic transmission, 8-speed
- Rear window heated
- Interior headliner fabric crystal grey
- Climate: THERMATIC automatic climate control
- Headrests (2)
- Rear headrests (3)
- Paint finish: Solid
- Cargo area cover (roller blind)
- Steering column mechanically adjustable lengthwise and heightwise.
- Navigation accessories: Extended MBUX functions
- Package: Seating comfort
- Radio: MBUX multimedia system
- Radio accessories: Touchpad
- Tire pressure monitoring system (TPMS)
- Wheels: 45.7 cm (18") alloy wheels, 4-spoke design, aerodynamically optimized
- Seats: Rear seat backrests foldable
- 12V power outlet in center console
- High-visibility vest for drivers
- Decorative elements spiral look
- Airbag: Kneebag for driver
- Airbag: Windowbags
- Active Lane Keeping Assist
- Rear armrest
- Automatic passenger airbag deactivation
- On-board computer
- Brake assist
- Diesel particulate filter
- Tachometer
- DYNAMIC SELECT
- Door sills with "Mercedes-Benz" lettering
- Chassis: Comfort chassis
- Velour floor mats
- Speed Limit Assistant
- Halogen headlights including integrated LED daytime running lights
- rear window wiper
- KEYLESS-GO start function
- Communication module (LTE) for the use of Mercedes me connect services
- Fuel tank with larger volume 60 l
- Loading floor height-adjustable and removable
- Steering wheel: Multifunction sports steering wheel in leather
- Mercedes-Benz emergency call system
- Package: Light and Visibility Package
- Upholstery: ARTICO leatherette/fabric
- Radio accessories: Digital radio
- Rain and light sensor
- Remote Services Plus
- Windscreen wipers with rain sensor
- Power steering
- Seats: Comfort seats
- Cruise control
- Immobiliser



### Extra equipment

- Storage compartment in center console with roller blind (The roller blind for the storage compartment in the center console offers you an elegant privacy screen made of high-quality material. This looks good, the interior appears even tidier, and everything important is within easy reach. Typical everyday items such as a smartphone, wallet, or various keys fit into the practical storage compartment.)
- Climate control: THERMOTRONIC automatic climate control (two zones with individually adjustable temperature for driver and front passenger - automatic control of temperature, air volume and air distribution (Auto button) - sensors maintain the desired climate - fine dust activated carbon filter - dew point sensor prevents window fogging and enables energy-efficient climate control - rear center vents for improved climate comfort in the rear - residual heat button for heating/ventilation when the vehicle is switched off (country-dependent))
- Package: MBUX Advanced Package
- Package: Mirror package (Exterior mirrors electrically fold in and out via a button in the driver's door control panel - the menu allows you to set the exterior mirrors to fold in automatically when locking the vehicle and unfold again when unlocking - the exterior mirror on the driver's side and the interior mirror dim automatically and continuously depending on the incident glare and ambient light)
- Radio accessories: Advanced sound system (with 10 speakers and 225 watts system power)
- Seats: 4-way lumbar support for driver and front passenger
- Blind Spot Assist
- Type designation removed from luggage compartment lid
- Airbag: Side airbag in the rear
- EASY-PACK tailgate (electrically opening and closing tailgate - switch for electrically opening the tailgate in the driver's door - switch for electrically closing the tailgate at the bottom edge of the tailgate - manual cargo cover for covering the cargo area)
- KEYLESS-GO (Your KEYLESS-GO vehicle key can stay in your pocket; you don't need to take it out of your hand. Thanks to the stored access and driving authorization, the vehicle recognizes its owner. Simply grasp the door handle, open the door, get in, and drive off – KEYLESS-GO is always a convenient experience.)
- Package: Business (Hard drive navigation - Smartphone integration - Traffic sign assistant - Preparation for digital key handover - Connectivity package navigation - Seat heating for driver and front passenger - Parking assistant with PARKTRONIC - Preparation for live traffic information)
- Package: Parking package with reversing camera (Active parking assistant with visual and acoustic warning of detected obstacles, notification of detected parking spaces in the instrument cluster via arrow display, assists with parking in and out of parallel and perpendicular parking spaces - reversing camera in the tailgate: display in the multimedia system screen with schematic representation and guidelines - ultrasonic sensors: located in the front and rear bumpers)
- Wheels: 48.3 cm (19") alloy wheels, 4-piece set in 10-spoke design (aerodynamically optimized, high-gloss black painted and diamond-turned with 235/50 R 19 tires on 7.5 J x 19 ET 53 rims)

### Brief expert findings

Documents submitted	At the time of the inspection, the vehicle registration certificate Part 2 (title) was available, but the vehicle registration certificate Part 1 (document) was not. (Copy)
VIN comparison	The vehicle identification number (VIN) was read from the vehicle and its conformity with the submitted documents was confirmed by the undersigned during the inspection.
Inspection	The inspection conditions were sufficient for the assessment of the vehicle. No lifting equipment or pit was available for inspecting the vehicle. Therefore, inspection of the vehicle's underside was only possible to a limited extent.
Test drive	No test drive/shunting maneuver was carried out during the inspection of the vehicle.
Engine function test	An engine test run was performed.

### Value reducing factors

No.	Component group	Description
1	Body	Underbody panelling (Ölfeucht) - Leaking - Perform diagnosis
2	Roof	Roof - dent(s) - Smooth repair work
3	Boot lid / rear door	Boot lid - dent(s) - Smooth repair work
4	Sill - right side	Sill - Scratch(es) - Smart repair
5	Rear bumper	Rear bumper - Scratch(es) - Smart repair
6	Vehicle glazing	Windscreen - Stone chips - Replace



## Wear and tear

No.	Component group	Description
1	Bonnet	Bonnet - Stone chips - No deduction
2	Front bumper	Front bumper - Stone chips - No deduction

The vehicle shows signs of wear and tear commensurate with its age and use.

## Missing parts

### Description

Equipment - Tirefit complete

## Order/Scope of Order

An order was placed to prepare a sales report for the described vehicle. This report includes the following:

- Description of key vehicle information
- Documentation of equipment features  
*(Delivery by third-party service providers)*
- Documentation of damage, defects, missing parts
- Documentation of prior damage, unrepaired prior damage, repainting
- A brief visual or functional inspection of the equipment details, if possible.  
*(Functional testing of driver assistance systems is not included in the scope of services!)*
- a photographic documentation of the vehicle

## Basis for the order

This product is based on the guidelines for vehicle returns and valuations published by Alphabet Fleet GmbH. The expert makes the specific findings in each individual case objectively, within the framework of the prescribed standards, based on their own expertise.

The vehicle inspection takes place in a fully assembled, unassembled state.

Damage or defects that can only be detected during disassembly/diagnostic work or through further investigation remain within the realm of prognostic risk. An increased risk exists due to concealed defects caused by fraudulent misrepresentation and which were not identifiable by the expert.

Damage or defects resulting from normal use or wear and tear of the vehicle will be accepted in accordance with the applicable standard.

There was no explicit identification or monetary consideration of the expected features within the product.

Features which, in their nature and extent, slightly exceed normal use but do not constitute unacceptable damage, will be documented and indicated as signs of wear, if applicable.

Damage or defects that, according to the applicable standard, can no longer be attributed to normal use or wear and tear are listed under "Value Reducing Factors" in the product description.

Depending on the product specification, a monetary ID can be provided. If this takes place, the costs can be 100% or pro rata depending on the vehicle's age and mileage.

## Previous damages

No apparent prior damage that had been repaired could be found on the vehicle.



Figure 1: Diagonal front (left)



Figure 2: Diagonal front (right)



Figure 3: Diagonal rear (left)



Figure 4: Diagonal rear (right)



Figure 5: Interior - front



Figure 6: Interior - rear



Figure 7: Instrument cluster



Figure 8: Instrument panel



Figure 9: Interior 360° view



Figure 10: Cargo area



Figure 11: VIN



Figure 12: Mounted tyres

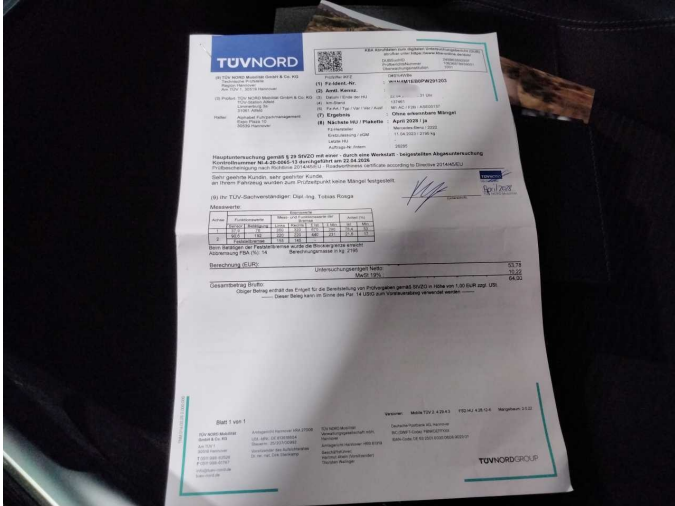


Figure 13: Documents



Figure 14: Documents

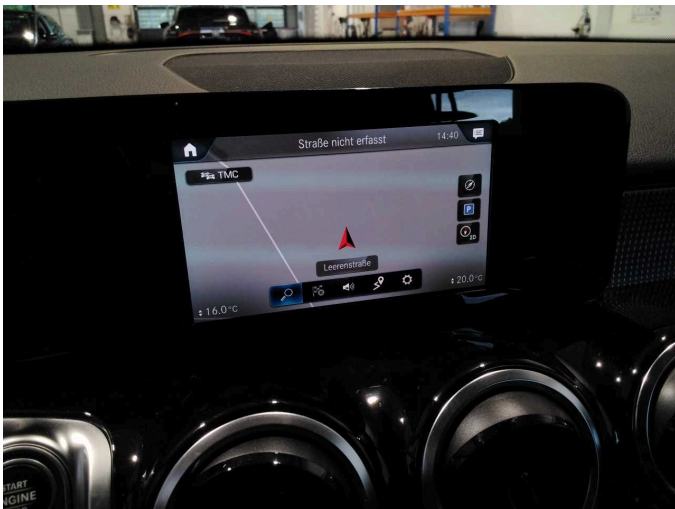


Figure 15: Navigation



Figure 16: Misc.



Figure 17: Misc.



Figure 18: Misc.



Figure 19: Misc.



Figure 20: Misc.



Figure 21: Misc.



Figure 22: Misc.

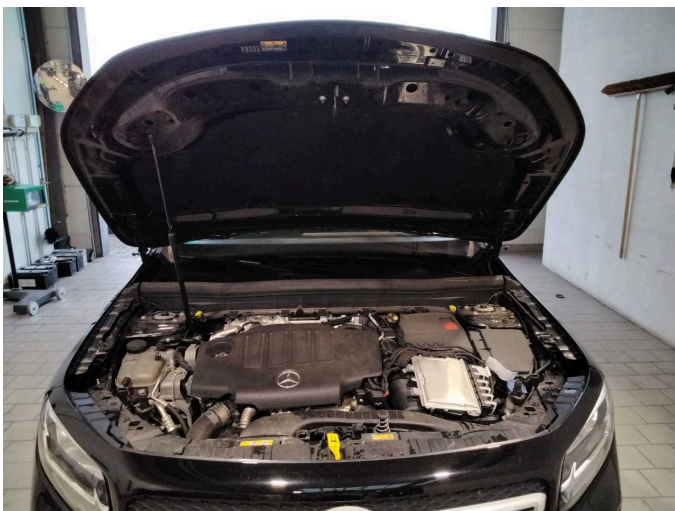


Figure 23: Misc.



Figure 24: Misc.



Figure 25: Misc.



Figure 26: Misc.

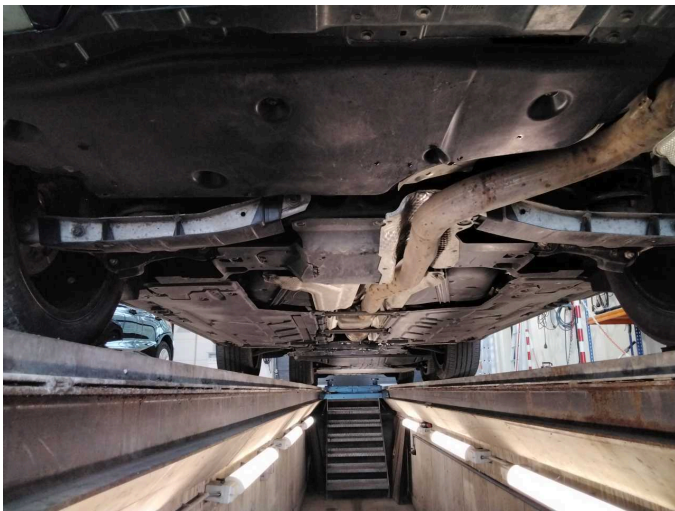
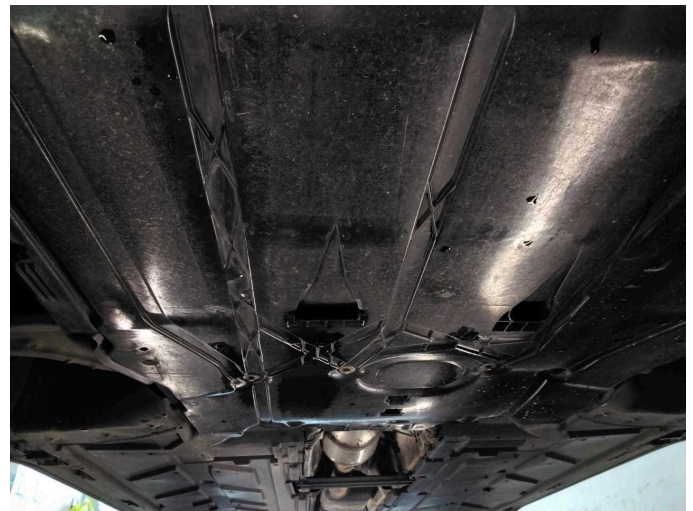
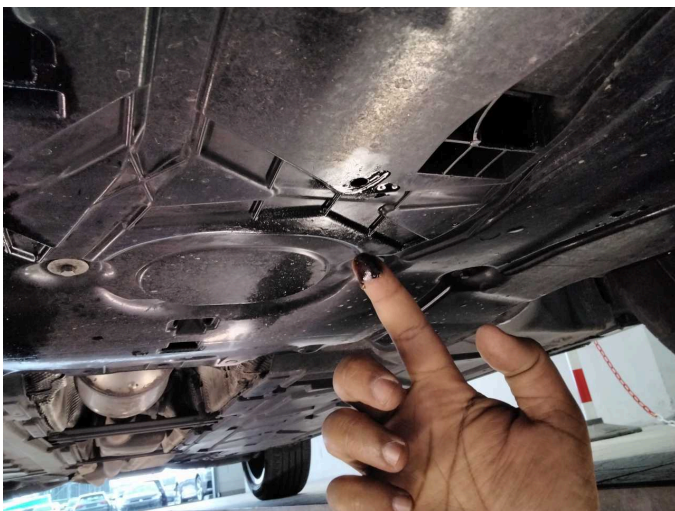


Figure 27: Misc.



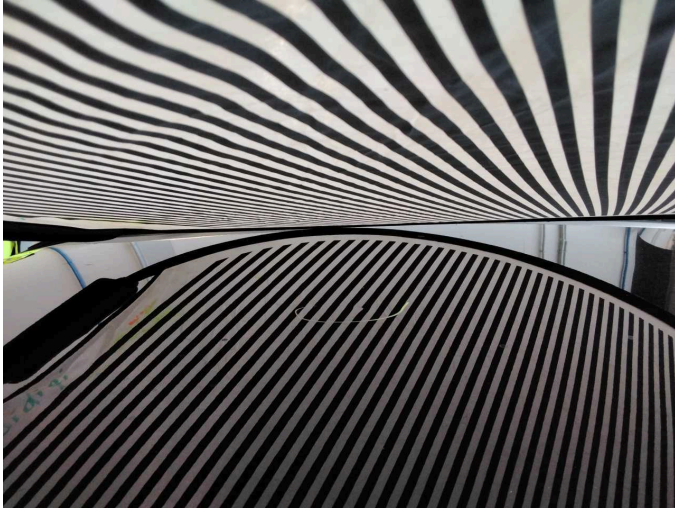
Damage 1: Body: Underbody panelling (Ölfeucht) - Leaking - Perform diagnosis



Damage 1: Body: Underbody panelling (Ölfeucht) - Leaking - Perform diagnosis



Damage 2: Roof: Roof - dent(s) - Smooth repair work



**Damage 2:** Roof: Roof - dent(s) - Smooth repair work



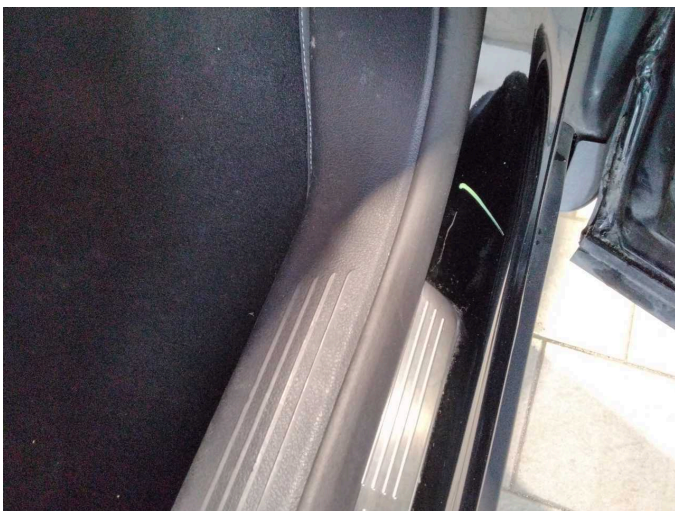
**Damage 3:** Boot lid / rear door: Boot lid - dent(s) - Smooth repair work



**Damage 3:** Boot lid / rear door: Boot lid - dent(s) - Smooth repair work



**Damage 4:** Sill - right side: Sill - Scratch(es) - Smart repair



**Damage 4:** Sill - right side: Sill - Scratch(es) - Smart repair



**Damage 5:** Rear bumper: Rear bumper - Scratch(es) - Smart repair



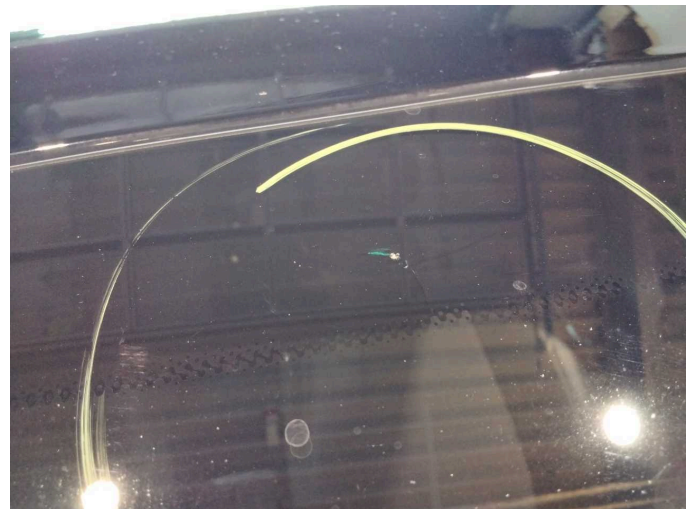
**Damage 5:** Rear bumper: Rear bumper - Scratch(es) - Smart repair



**Damage 6:** Vehicle glazing: Windscreen - Stone chips - Replace



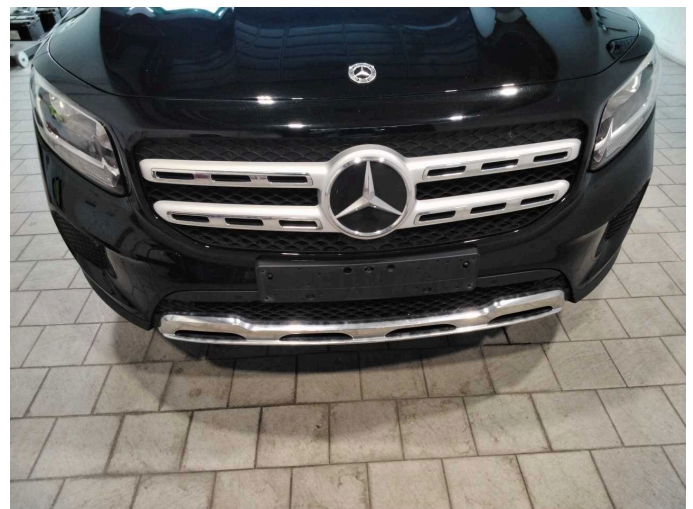
**Damage 6:** Vehicle glazing: Windscreen - Stone chips - Replace



**Damage 6:** Vehicle glazing: Windscreen - Stone chips - Replace



**Wear and tear 1:** Bonnet: Bonnet - Stone chips - No deduction



**Wear and tear 2:** Front bumper: Front bumper - Stone chips - No deduction



**Missing part 1:** Equipment: Tirefit complete - Missing - Replace



# Wartungshistorie

(gemäß Auftraggeber Informationen)

Fahrgestellnummer: W1N4M1EB0PW291203

Hersteller / Modell: MERCEDES-BENZ MB GLB 220 d 8G-DCT Progressive

Datum	KM-Stand	Beschreibung
22.04.2026	137.460	HU + AU
10.11.2025	119.875	Motoröl b. Wartung; Ölfilter ern; Regelwartungsdienst; Wartung Sonstiges
05.06.2025	104.170	Bremsscheiben vorne
16.04.2025	96.623	Klimaanlage inst.
07.04.2025	96.623	Regelwartungsdienst
25.09.2024	72.259	Regelwartungsdienst
09.04.2024	47.968	Regelwartungsdienst
04.12.2023	25.508	Regelwartungsdienst