

## Expertise

Protocol number: 45964267  
Order No. / Reference: 26448403  
Inspection date: 16 Jun 2026

Manufacturer: Volkswagen

Model: Passat Variant 2.0 TDI SCR DSG Business

VIN: WVVZZZ3CZPE074127



### Vehicle details

#### Manufacturer / Type / Model / Equipment

Volkswagen Passat Variant 2.0 TDI SCR DSG Business

<b>Vehicle Identification number</b>	WVVZZZ3CZPE074127
<b>Mileage (Read)</b>	133,329 km
<b>First registration</b>	1 Aug 2023
<b>Number of holders</b>	1
<b>Next periodical technical inspection</b>	08/2026 (Report not on hand)

<b>Power / Engine displacement</b>	110 kw / 1,968 ccm
------------------------------------	--------------------

<b>Fuel type / Cylinder</b>	Diesel / 4
-----------------------------	------------

<b>Gearbox / Number of gears</b>	Automatic / 7
----------------------------------	---------------

<b>Type of drive</b>	Front drive
----------------------	-------------

<b>Type of vehicle</b>	Station wagon
------------------------	---------------

<b>Colour / colour code</b>	Mangangrau-metallic (B7R)
-----------------------------	------------------------------

<b>Doors / Seats</b>	5 / 5
----------------------	-------

<b>Upholstery type</b>	Cloth
------------------------	-------

<b>Colour of upholstery</b>	Black-Anthracite
-----------------------------	------------------

<b>Re-import</b>	no
------------------	----

<b>readiness to drive</b>	Roadworthy
---------------------------	------------



**Vehicle details**

<b>Maintenance booklet / proof</b>	Non-existent	<b>Next maintenance in</b>	9,400 km
<b>Key is / should be</b>	2 / 2	<b>FZG documents</b>	ZB#2 (B) was available (copy), ZB#1 (S) was not available.
		<b>Letter No.</b>	GX158355
<b>Previous damage / Accident</b>	None detectable	<b>Repainting</b>	None detectable
<b>Inspection conditions</b>	sufficient	<b>Lifting equipment / pit</b>	yes
<b>Test drive</b>	Not performed	<b>Engine function test</b>	Performed
<b>readiness to drive</b>	Roadworthy		
<b>Manufacturer key number/ type code number</b>	0603 / BQS 05803		
<b>Emission standard</b>	EURO6;WLTP;AP;PI/CI; M, N1 I	<b>fine dust sticker</b>	
<b>Permitted total weight</b>	2,200 kg	<b>Empty weight</b>	

**Tyres**

**Mounted tyres**

#	Tyre size	Type of tyre	Manufacturer	Tread depth
1)	215/60 R16 95V	Summer tyres on Light alloy	Dunlop	4mm / 4mm
2)	215/60 R16 95V	Summer tyres on Light alloy	Dunlop	4mm / 4mm

**Replacement**

Typ	Tyre size	Type of tyre	Manufacturer	Tread depth
Tirefit		Expiration date 04/2027		

**Legend: Tread depth information for the left tire is listed first, for the right tire it is listed second on the axle in the direction of travel.**



## Equipment

### Standard equipment

- Airbag for driver and front passenger
- Anti-lock braking system (ABS)
- Adaptive Cruise Control (ACC) "stop & go", including speed limiter
- Cup holders (2) front
- third brake light
- Headliner in Mistral Grey
- Diesel particulate filter
- Parking aid - warning signals for obstacles in the front and rear area
- Electronic stability program and electromechanical brake booster
- Windscreen made of laminated safety glass, heat and sound insulating
- Transmission: 7-speed DSG
- rear window wiper
- ISOFIX mounting points
- Rear headrests (3)
- Paint finish: Solid
- LED taillights
- Steering wheel: Multifunction steering wheel in leather, with paddle shifters
- "Premium" multifunction display with multicolor screen
- Fatigue detection
- Non-smoking version
- Emergency call service
- Package: Light and Sight Package "Plus"
- Proactive occupant protection system in conjunction with "Front Assist"
- Tire pressure monitoring system (passive)
- Wheels: Tire Mobility Set
- Gearshift knob in leather
- Keyless start system without safe locking
- Seat belts: Three-point automatic seat belt
- Seats: Lumbar support in the front
- Lane keeping assistant "Lane Assist"
- 12V power outlet on the rear of the center console
- Textile floor mats
- Warning tone and light for unfastened seat belts front and rear
- Airbag, head airbag system for front and rear passengers
- App-Connect
- Electrically adjustable and heated exterior mirrors, ambient lighting
- Hill start assist
- Chrome trim on the side windows
- black roof rails
- Tachometer
- Entry/warning lights in LED technology in the front doors
- Electronic parking brake including auto-hold function
- Automatic headlight control
- Remote release for luggage compartment lid
- Pedestrian detection
- Adjustable luggage compartment floor
- Rear window heated
- Interior lights with delayed shut-off and dimming function
- Air conditioning
- Front headrests
- LED fog lights and cornering lights
- LED headlights with daytime running lights
- Headlight range control
- Front center armrest, height and length adjustable, with storage box
- Mesh partition
- Emergency braking assistant "Front Assist" (for automatic distance control ACC up to 210 km/h)
- Upholstery: "Business" fabric
- Radio "Composition"
- Radio accessories: Digital radio reception DAB+
- Wheels: 4 light alloy wheels "Sepang" 6.5 J x 16
- Rear bench seat, undivided, backrest asymmetrically split and foldable, with center armrest
- Power steering
- Seats: Comfort seats in the front
- Seats: Front seats are height-adjustable
- Start-stop system
- Telephone interface
- First aid kit, warning triangle and high-visibility vest
- Electronic immobilizer
- Central locking with remote control



### Extra equipment

- App-Connect Wireless
- Tailgate with electric opening and closing, electric opening for luggage compartment cover (extendable and removable luggage compartment cover with electric opening - tailgate with electric opening and closing)
- Steering wheel: Multifunction leather steering wheel, heated, with paddle shifters
- Package: "Business Premium" package incl. navigation (from Business trim level) (2 USB-C ports in the front, USB-C charging socket in the rear, 230V socket, App-Connect incl. wireless, Apple CarPlay, Android Auto, "Travel Assist" driver assistance system and "Lane Assist" lane keeping assist system, Air Care Climatronic with 3-zone temperature control, active combination filter and rear controls, lumbar support in the front, electric on the driver's side, massage function on the driver's side, "Rear View" reversing camera, heated windshield washer nozzles, Comfort telephone interface, inductive charging function, heated front seats)
- High beam control "Light Assist" (automatically switches on the high beam in darkness from 65 km/h - detects vehicles ahead and oncoming vehicles and automatically dims the headlights before they are blinded)
- Paint finish: Metallic
- Navigation system "Discover Media" incl. "Streaming & Internet"
- Rear side windows and rear window tinted
- Seats: ergoComfort seat with 14-way electric adjustment, memory and massage function on driver's side in conjunction with Business Package (electrically folding exterior mirrors, auto-dimming on driver's side, ambient lighting, passenger-side mirror lowering and memory function - electrically adjustable lumbar support for front seats, massage function on driver's side - electrically adjustable front seats, ergoComfort seat on driver's side with memory function and comfort entry)
- Voice control
- "Comfort" telephone interface with inductive charging function

### Brief expert findings

Documents submitted	At the time of the inspection, the vehicle registration certificate Part 2 (title) was available, but the vehicle registration certificate Part 1 (document) was not. (Copy)
VIN comparison	The vehicle identification number (VIN) was read from the vehicle and its conformity with the submitted documents was confirmed by the undersigned during the inspection.
Inspection	The inspection conditions were sufficient for the assessment of the vehicle. Lifting equipment and/or a pit were available for examining the vehicle.
Test drive	No test drive/shunting maneuver was carried out during the inspection of the vehicle.
Engine function test	An engine test run was performed.
readiness to drive	The vehicle was roadworthy at the time of inspection.

### Wear and tear

No.	Component group	Description
1	Misc.	Inspection / maintenance - No evidence - No deduction

The vehicle shows signs of wear and tear commensurate with its age and use.

### Order/Scope of Order

An order was placed to prepare a sales report for the described vehicle. This report includes the following:

- Description of key vehicle information
- Documentation of equipment features  
(*Delivery by third-party service providers*)
- Documentation of damage, defects, missing parts
- Documentation of prior damage, unrepaired prior damage, repainting
- A brief visual or functional inspection of the equipment details, if possible.  
(*Functional testing of driver assistance systems is not included in the scope of services!*)
- a photographic documentation of the vehicle



## Basis for the order

This product is based on the guidelines for vehicle returns and valuations published by Alphabet Fleet GmbH. The expert makes the specific findings in each individual case objectively, within the framework of the prescribed standards, based on their own expertise.

The vehicle inspection takes place in a fully assembled, unassembled state.

Damage or defects that can only be detected during disassembly/diagnostic work or through further investigation remain within the realm of prognostic risk. An increased risk exists due to concealed defects caused by fraudulent misrepresentation and which were not identifiable by the expert.

Damage or defects resulting from normal use or wear and tear of the vehicle will be accepted in accordance with the applicable standard.

There was no explicit identification or monetary consideration of the expected features within the product.

Features which, in their nature and extent, slightly exceed normal use but do not constitute unacceptable damage, will be documented and indicated as signs of wear, if applicable.

Damage or defects that, according to the applicable standard, can no longer be attributed to normal use or wear and tear are listed under "Value Reducing Factors" in the product description.

Depending on the product specification, a monetary ID can be provided. If this takes place, the costs can be 100% d or pro rata depending on the vehicle's age and mileage.

## Previous damages

No apparent prior damage that had been repaired could be found on the vehicle.



Figure 1: Diagonal front (left)



Figure 2: Diagonal front (right)



Figure 3: Diagonal rear (left)



Figure 4: Diagonal rear (right)



Figure 5: Interior - front



Figure 6: Interior - rear



Figure 7: Instrument cluster



Figure 8: Instrument panel



Figure 9: Interior 360° view



Figure 10: Cargo area



Figure 11: VIN



Figure 12: Mounted tyres



Figure 13: Documents

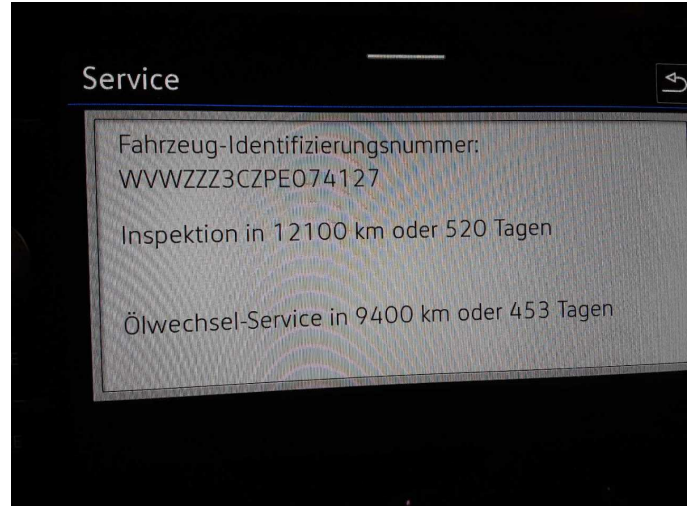


Figure 14: Documents

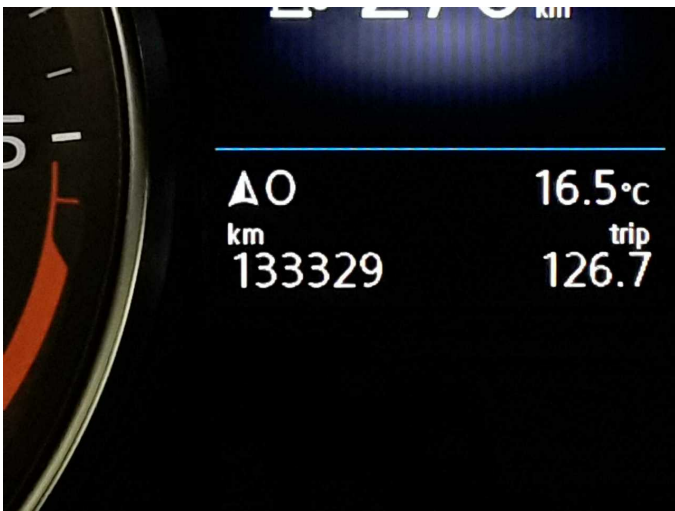


Figure 15: Documents

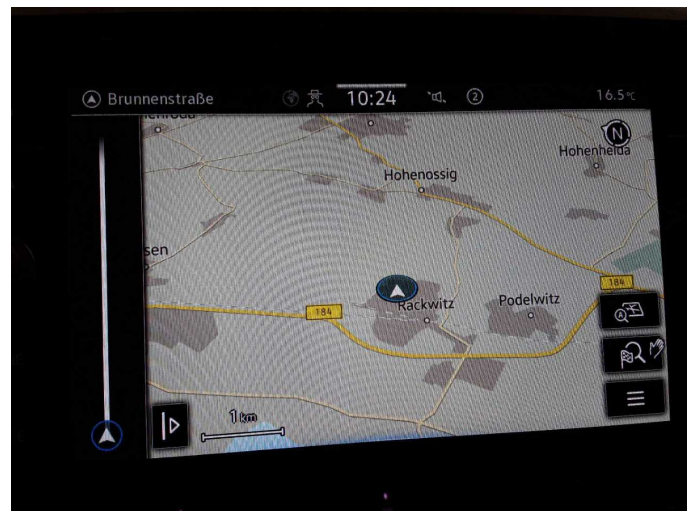


Figure 16: Navigation



Figure 17: Misc.

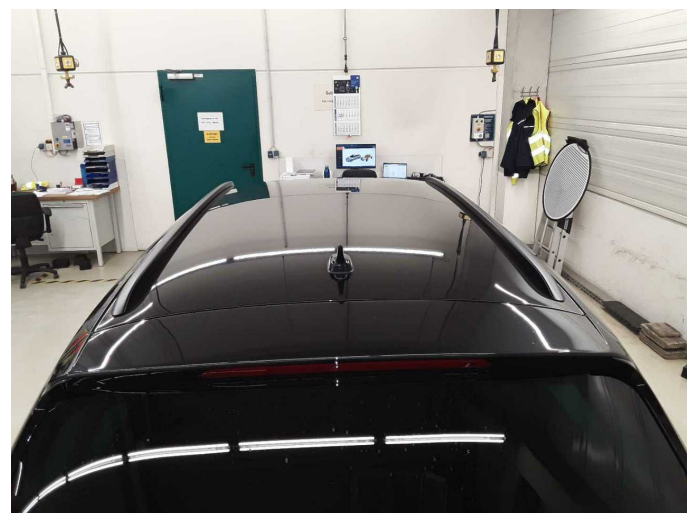


Figure 18: Misc.



Figure 19: Misc.



Figure 20: Misc.

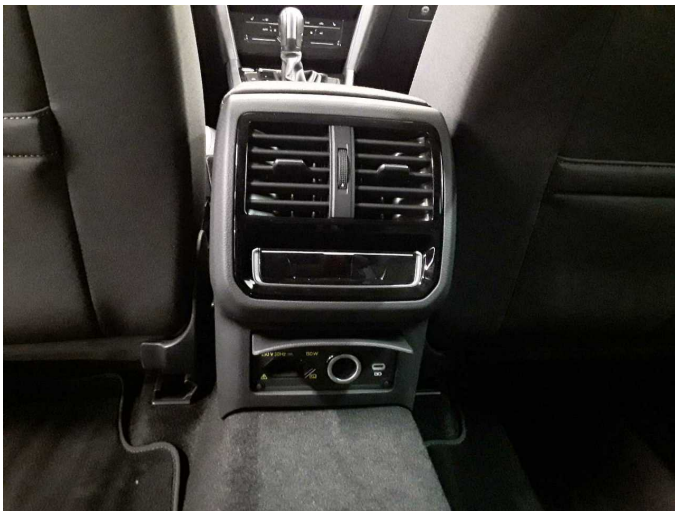


Figure 21: Misc.



Figure 22: Misc.

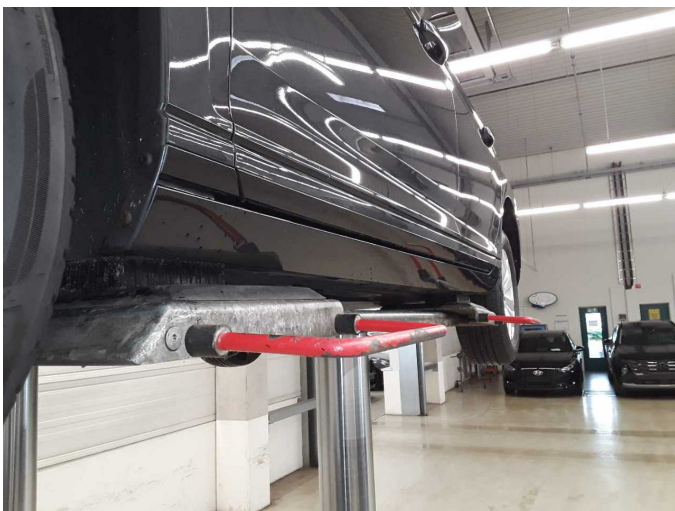


Figure 23: Misc.

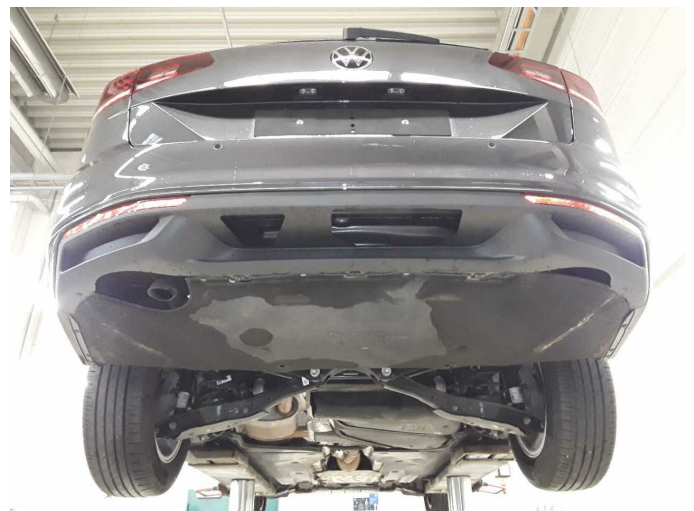


Figure 24: Misc.

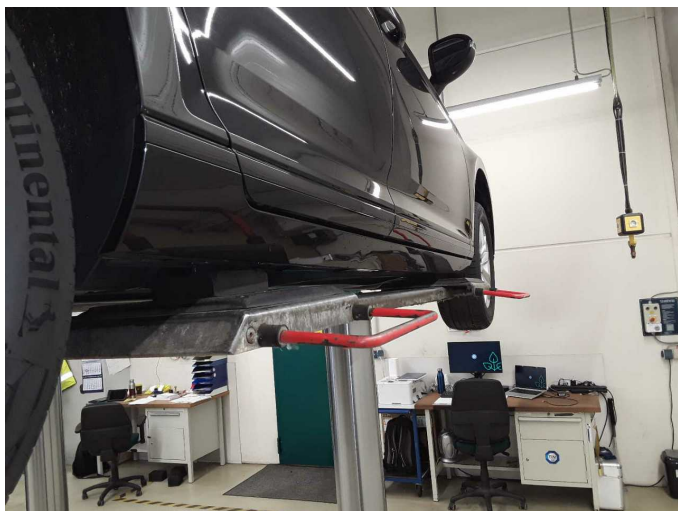


Figure 25: Misc.