

Expertise

Protocol number: 46060394
Order No. / Reference: 26264119
Inspection date: 29 May 2026

Manufacturer: Ford

Model: Focus Turnier 1.5 EcoBlue Start-Stopp-System Aut. TITANIUM X

VIN: WF0PXXGCHPPY08563



Vehicle details

Manufacturer / Type / Model / Equipment

Ford Focus Turnier 1.5 EcoBlue Start-Stopp-System Aut. TITANIUM X

Vehicle Identification number WF0PXXGCHPPY08563

Mileage (Read) 142,812 km

First registration 18 Jul 2023

Number of holders 1

Power / Engine displacement 85 kw / 1,499 ccm

Fuel type / Cylinder Diesel / 4

Gearbox / Number of gears Automatic / 8

Type of drive Front drive

Type of vehicle Station wagon

Colour / colour code Chrome Blue Metallic

Doors / Seats 5 / 5

Upholstery type Cloth

Colour of upholstery Anthracite-Black

TÜV SÜD Auto Partner GmbH
Wiesenring 2
04159 Leipzig

Inspection location
Hartmann Fleet Professionals GmbH
Leerenstraße 25
29683 Bad Fallingbommel



Equipment



Standard equipment

- Airbag: Passenger airbag deactivation
- Anti-lock braking system (ABS) with electronic brake force distribution (EBD)
- Hill start assist
- Fabric headliner
- Roof spoiler painted in car color
- Digital instrument panel 12.3" (31.2 cm screen diagonal)
- Electronic Shifter
- Lane keeping assist including lane keeping assist
- Electric front and rear windows (with all-around closing function)
- FordPass Connect including live traffic information (Additionally for PowerShift automatic transmission: Ford Mobile Remote remote start function)
- Speed limiter (Intelligent speed limiter with speed limit display)
- Illuminated glove compartment
- rear window wiper
- Interior mirror, automatically dimming
- Intelligent safety system (front airbag for driver and front passenger - front and rear head and shoulder airbags - side airbag for driver and front passenger - seat belt tensioners and force limiters in the front and on the outer seats of the 2nd row - 3-point seat belts on all seats, height-adjustable in the front - safety pedal assembly)
- Headrests: 2 front and 3 rear, height adjustable
- Steering wheel: 3-spoke design steering wheel (in Sensico leather look)
- Make-up mirrors in driver and passenger sun visors
- Front center console "Premium" (sliding armrest - cup holders - storage compartments - 12-volt and USB connection)
- Emergency call assistant
- Front and rear parking pilot system
- Upholstery: Cloth
- Post-Collision Assist (In the event of a severe collision, which would also deploy the airbag and in which the driver might be incapacitated, this system initiates the braking process. This reduces the risk of colliding with further obstacles and road users after the initial collision. The driver can intervene and operate the accelerator or brake pedal manually throughout the entire process.)
- Tire repair kit (for use at a maximum speed of 80 km/h)
- Tire Pressure Monitoring System (TPMS)
- Headlight dipped beam (with switch-off delay)
- Side windows from the 2nd row of seats and rear window, dark tinted.
- Electro-mechanical speed-dependent power steering (EPAS - Electric Power Assisted Steering)
- Seats: Driver's seat height adjustable (with manually adjustable lumbar support)
- Start-stop system
- Phone accessories: Inductive charging station for mobile devices (according to Qi standard, compatibility depends on the device)
- Lashing eyes in the luggage compartment
- Ambient lighting, front
- Exterior mirrors painted in body color, electrically adjustable, heated and foldable (with integrated turn signals - ambient lighting)
- Roof rails, aluminum
- Diesel particulate filter (DPF)
- Tachometer
- Electronic Stability Program (ESP) (with Emergency Brake Assist (EBA) and Traction Control System (TCS))
- Electric parking brake with auto-hold function
- Ford Key Free system including Ford Power Start function (keyless unlocking/locking - keyless starting)
- Luggage compartment cover
- Luggage compartment lighting
- Cruise control
- Transmission: 8-speed automatic transmission
- Back window, heater
- Interior lighting with LED technology (front and rear and map reading lights at the front)
- Isofix mounting (including top tether anchor points on the outer seats of the 2nd row)
- Air conditioning with automatic temperature control (separately adjustable for driver and passenger side (2-zone automatic climate control))
- Knee pads on the center console
- LED taillights
- Steering column, adjustable (adjustable in height and reach)
- Rear center armrest (with 2 cup holders)
- MyKey key system (individually programmable second key)
- Navigation: Ford SYNC 4 including Ford navigation system with AppLink, 13.2" touchscreen and DAB/DAB+ (6 speakers - Amazon Alexa built-in voice assistant - Android Auto and Apple CarPlay - Steering wheel controls - Digital user manual - Bluetooth hands-free calling and audio streaming - USB ports - Voice control for audio and phone - Ford Power-Up software updates - Intelligent route suggestions - Customizable user profiles - Radio player - Audible and visual route guidance, dynamic and cloud-based navigation with advanced traffic information system, lane guidance and road map for Europe)
- Pre-Collision Assist (Forward Alert system with pedestrian and bicycle detection)
- Windscreen wipers with rain sensor (sensitivity adjustable)
- Headlight assistant with day/night sensor
- Selective driving mode switch (including 3 selectable driving modes: Normal, Sport and Eco)
- Seats: Passenger seat height-adjustable, manually (with adjustable lumbar support)
- Seats: Rear seat backrest (foldable, 60:40 split with ski pass-through)
- 12-volt power outlet in the luggage compartment
- Carpet floor mats front and rear, velour



- Electronic immobilizer
- Central locking with remote control and remote luggage compartment release

- 2 USB ports in the center console, rear
- Variable radiator air intake
- Warning system for unfastened seat belts for the 1st and 2nd rows of seats

Extra equipment

- eCall
- Head-up display
- LED matrix headlights, adaptive (LED matrix low beam - LED matrix high beam - LED matrix cornering light, dynamic - LED daytime running lights incl. integrated LED turn signals at the front - LED cornering light, static, incl. maneuvering and bad weather light - Automatic headlight range control - High beam assist, glare-free)
- Package: Winter (heated windscreen - heated steering wheel - individually and variably heated front seats)
- Paint finish: Metallic
- Radio: B&O Sound System (675 Watt premium sound system with 10 speakers, including subwoofer - based on the renowned sound and design expertise of Bang & Olufsen)
- Safety partition net for luggage compartment
- Seats: Ford ergonomic seat (driver and front passenger seat, 18-way adjustable: - position, height and tilt of the backrest and seat cushion manually adjustable (in conjunction with EcoBoost Hybrid - front passenger seat, 2-way adjustable) - thigh support, manually extendable - lumbar support, 4-way electrically adjustable)
- Tires: 7 J x 17 alloy wheels (4) with 215/50 R 17 tires (in 5x3-spoke design, in Pearl Grey premium paint finish, diamond-turned)

- Anti-theft alarm system including interior monitoring
- Mounting points behind the 1st row of seats (according to ISO 27955, required for the installation of the safety partition available as an accessory from your Ford partner)
- Package: Driver Assistance Package II (Drive Assist Intelligent adaptive cruise control Lane keeping assist Traffic jam assist with Stop&Go Traffic sign recognition Wrong-way driver warning radio Evasive steering assist Distance display and distance warning Driver drowsiness detection High beam assist (in conjunction with adaptive LED matrix headlights with glare-free high beam assist) Blind spot assist with cross traffic alert including emergency braking function (when reversing out of parking spaces) and trailer recognition Rear view camera with split view Electrically folding exterior mirrors with surround view)
- Package: Easy Parking (Active Parking Assist with parking and exiting function (in conjunction with 8-speed automatic transmission including semi-automated vehicle guidance) - Door edge protection - Rearview camera with "Split View" technology)
- Reversible luggage compartment mat
- Swiveling towbar (incl. ESP trailer stabilization)
- Tailgate, electric and sensor-controlled (opening and closing via foot movement)

Brief expert findings

Documents submitted	At the time of the inspection, the vehicle registration certificate Part 2 (title) was available, but the vehicle registration certificate Part 1 (document) was not. (Copy)
VIN comparison	The vehicle identification number (VIN) was read from the vehicle and its conformity with the submitted documents was confirmed by the undersigned during the inspection.
Inspection	The inspection conditions were sufficient for the assessment of the vehicle. No lifting equipment or pit was available for inspecting the vehicle. Therefore, inspection of the vehicle's underside was only possible to a limited extent.
Test drive	No test drive/shunting maneuver was carried out during the inspection of the vehicle.
Engine function test	An engine test run was performed.

Value reducing factors

No.	Component group	Description
1	Electrical system	Battery (Tiefenentladen) - Functional / admissibility - Perform diagnosis
2	Trim / covers	Door trim - front left side - dent(s) - Loss in value
3	Instrument panel	Indicator light (Adaptive Scheinwerfer überprüfen) - on - Perform diagnosis
4	Bonnet	Bonnet - dent(s) - Smooth repair work
5	Wing mirror - left side	Cap - Scratch(es) - Smart repair
6	Side panel - rear left side	Side panel - Dent / paintcoat damage - Smart repair
7	Engine	Engine (Ölverlust) - Leaking - Perform diagnosis
8	Boot lid / rear door	Rear spoiler - dent(s) - Repair and paint



Wear and tear

No.	Component group	Description
1	Trim / covers	Boot lid - interior trim - Soiled - No deduction
2	Roof	Roof - dent(s) - No deduction
3	Vehicle glazing	Windscreen - Stone chips - No deduction
4	Mudguard - right side	Mudguard - right side - Stone chips - No deduction
5	Side panel - rear right side	Sill - Scratch(es) - No deduction
6	Door - front left side	Door edge - Scratch(es) - No deduction
7	Side panel - rear right side	Side panel - dent(s) - No deduction
8	Roof	Roof rail - right side - dent(s) - No deduction

The vehicle shows signs of wear and tear commensurate with its age and use.

Previous damages

No.	Previous damage	Extent of damage (Net)
1	Side - left, Professionally repaired	

Repainting

No.	Repainting
1	Door - front left side, Professionally carried out

Paint coat thickness measurement

Door - front left side 200 µm |

Order/Scope of Order

An order was placed to prepare a sales report for the described vehicle. This report includes the following:

- Description of key vehicle information
- Documentation of equipment features
(*Delivery by third-party service providers*)
- Documentation of damage, defects, missing parts
- Documentation of prior damage, unrepaired prior damage, repainting
- A brief visual or functional inspection of the equipment details, if possible.
(*Functional testing of driver assistance systems is not included in the scope of services!*)
- a photographic documentation of the vehicle



Basis for the order

This product is based on the guidelines for vehicle returns and valuations published by Alphabet Fleet GmbH. The expert makes the specific findings in each individual case objectively, within the framework of the prescribed standards, based on their own expertise.

The vehicle inspection takes place in a fully assembled, unassembled state.

Damage or defects that can only be detected during disassembly/diagnostic work or through further investigation remain within the realm of prognostic risk. An increased risk exists due to concealed defects caused by fraudulent misrepresentation and which were not identifiable by the expert.

Damage or defects resulting from normal use or wear and tear of the vehicle will be accepted in accordance with the applicable standard.

There was no explicit identification or monetary consideration of the expected features within the product.

Features which, in their nature and extent, slightly exceed normal use but do not constitute unacceptable damage, will be documented and indicated as signs of wear, if applicable.

Damage or defects that, according to the applicable standard, can no longer be attributed to normal use or wear and tear are listed under "Value Reducing Factors" in the product description.

Depending on the product specification, a monetary ID can be provided. If this takes place, the costs can be 100% or pro rata depending on the vehicle's age and mileage.

Previous damages

Professionally repaired previous damages were found at the vehicle.

Comments

- Winterradsatz ist kein Bestandteil des Auslieferungsumfangs.



Figure 1: Diagonal front (left)



Figure 2: Diagonal front (right)



Figure 3: Diagonal rear (left)



Figure 4: Diagonal rear (right)



Figure 5: Interior - front



Figure 6: Interior - rear



Figure 7: Instrument cluster



Figure 8: Instrument panel



Figure 9: Interior 360° view



Figure 10: Cargo area



Figure 11: VIN



Figure 12: Mounted tyres

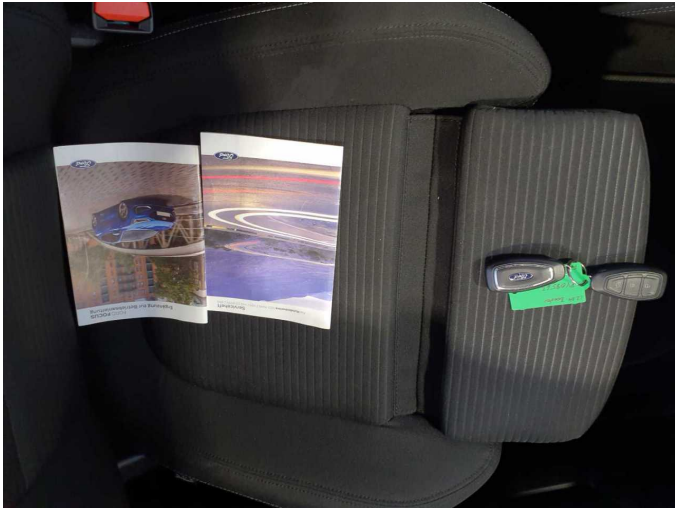


Figure 13: Documents



Figure 14: Additional tyres



Figure 15: Additional tyres

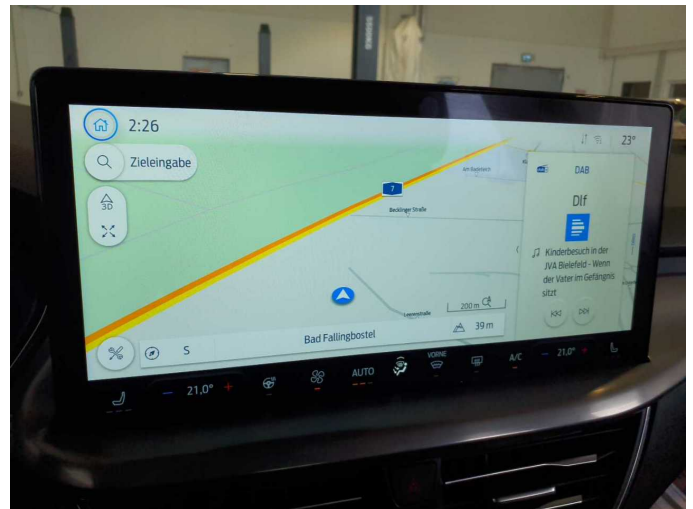


Figure 16: Navigation



Figure 17: Misc.



Figure 18: Misc.

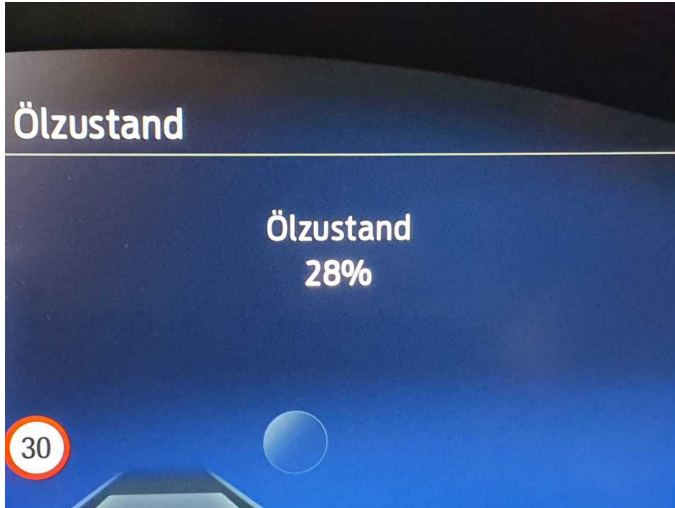


Figure 19: Misc.

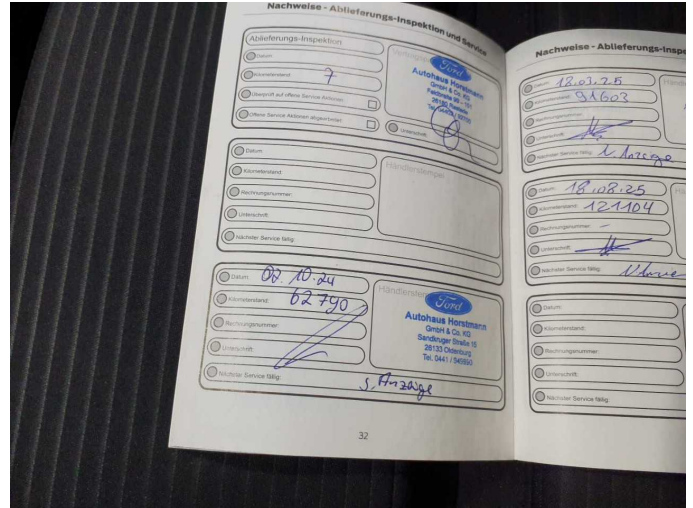


Figure 20: Misc.

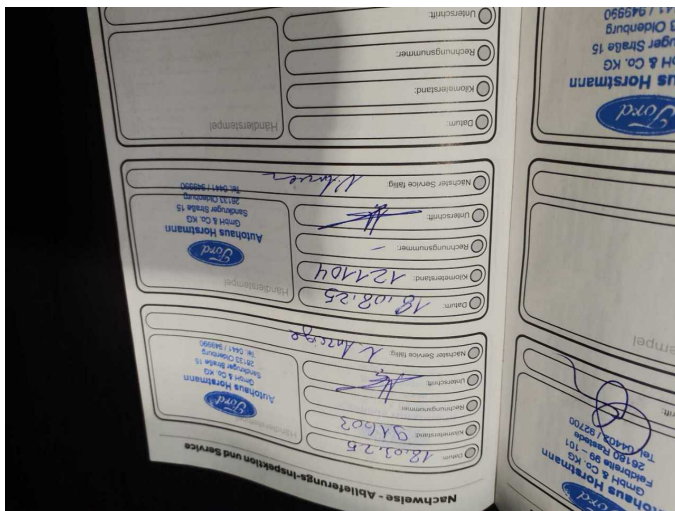


Figure 21: Misc.



Figure 22: Misc.

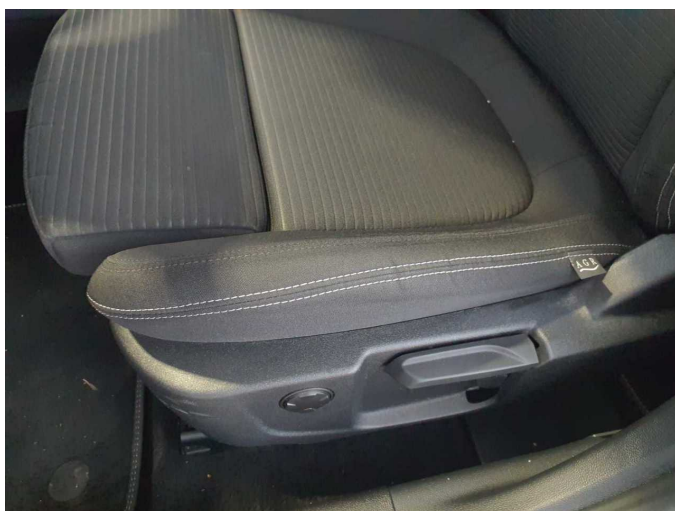


Figure 23: Misc.



Figure 24: Misc.



Figure 25: Misc.



Figure 26: Misc.



Figure 27: Misc.



Figure 28: Misc.



Figure 29: Misc.



Figure 30: Misc.

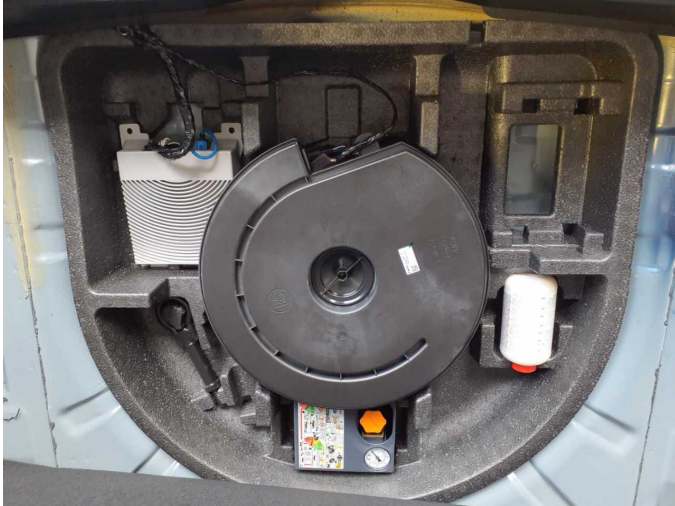
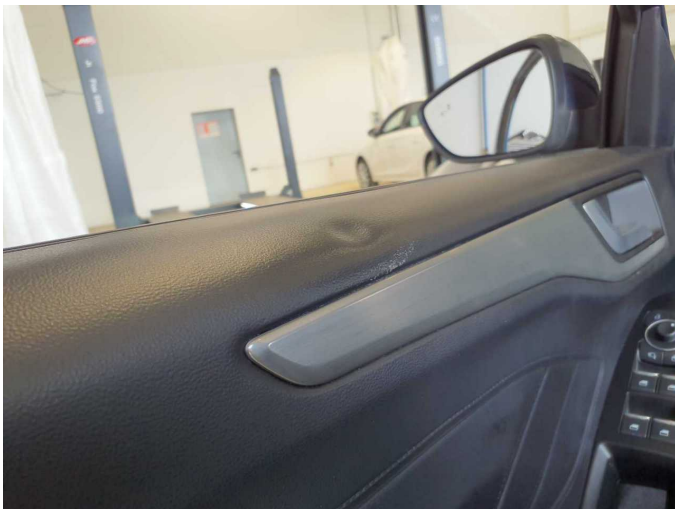


Figure 31: Misc.



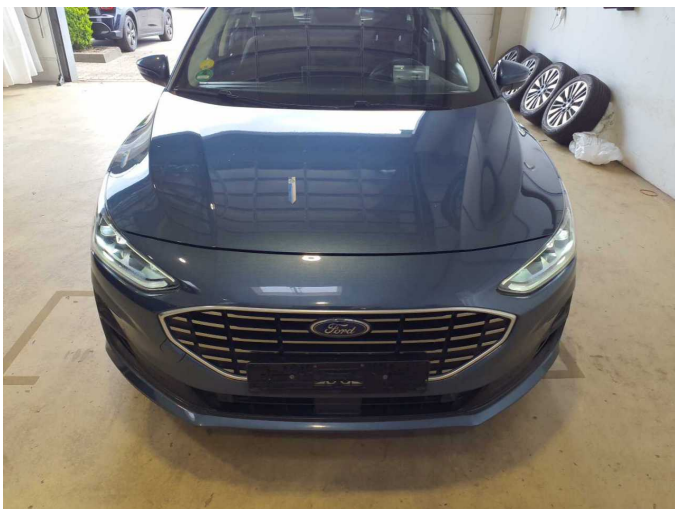
Damage 2: Trim / covers: Door trim - front left side - dent(s) - Loss in value



Damage 2: Trim / covers: Door trim - front left side - dent(s) - Loss in value



Damage 3: Instrument panel: Indicator light (Adaptive Scheinwerfer überprüfen) - on - Perform diagnosis



Damage 4: Bonnet: Bonnet - dent(s) - Smooth repair work



Damage 4: Bonnet: Bonnet - dent(s) - Smooth repair work



Damage 4: Bonnet: Bonnet - dent(s) - Smooth repair work



Damage 4: Bonnet: Bonnet - dent(s) - Smooth repair work



Damage 5: Wing mirror - left side: Cap - Scratch(es) - Smart repair



Damage 5: Wing mirror - left side: Cap - Scratch(es) - Smart repair



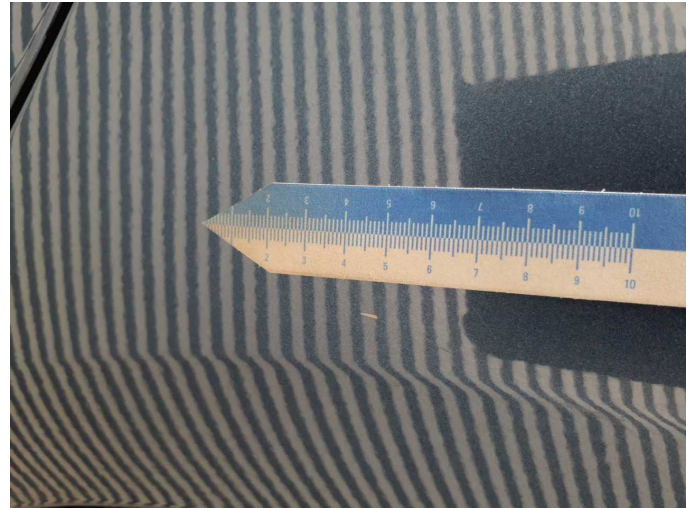
Damage 5: Wing mirror - left side: Cap - Scratch(es) - Smart repair



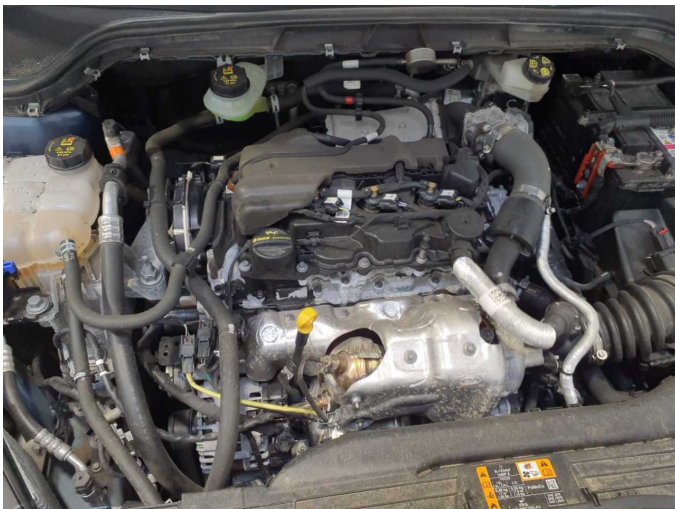
Damage 6: Side panel - rear left side: Side panel - Dent / paintcoat damage - Smart repair



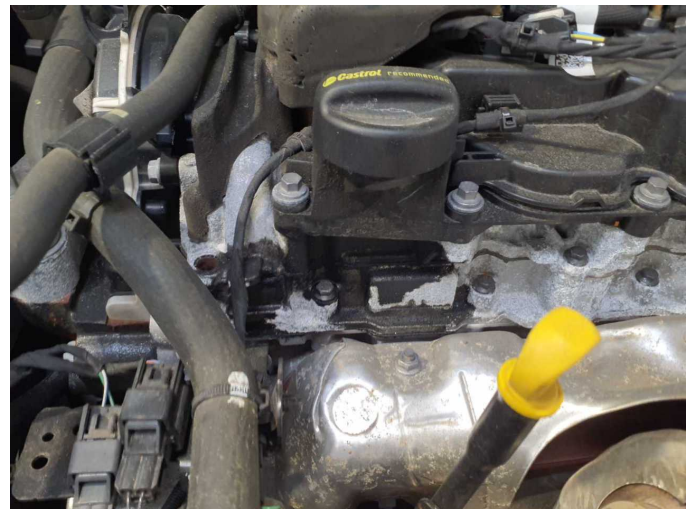
Damage 6: Side panel - rear left side: Side panel - Dent / paintcoat damage - Smart repair



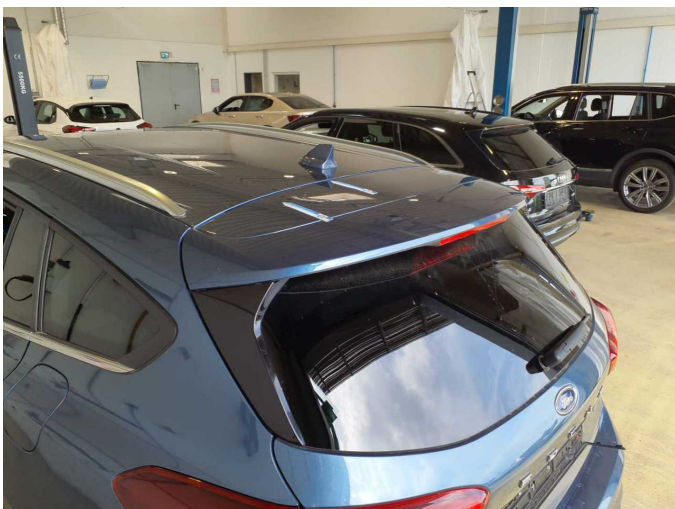
Damage 6: Side panel - rear left side: Side panel - Dent / paintcoat damage - Smart repair



Damage 7: Engine: Engine (Ölverlust) - Leaking - Perform diagnosis



Damage 7: Engine: Engine (Ölverlust) - Leaking - Perform diagnosis



Damage 8: Boot lid / rear door: Rear spoiler - dent(s) - Repair and paint



Damage 8: Boot lid / rear door: Rear spoiler - dent(s) - Repair and paint



Damage 8: Boot lid / rear door: Rear spoiler - dent(s) - Repair and paint



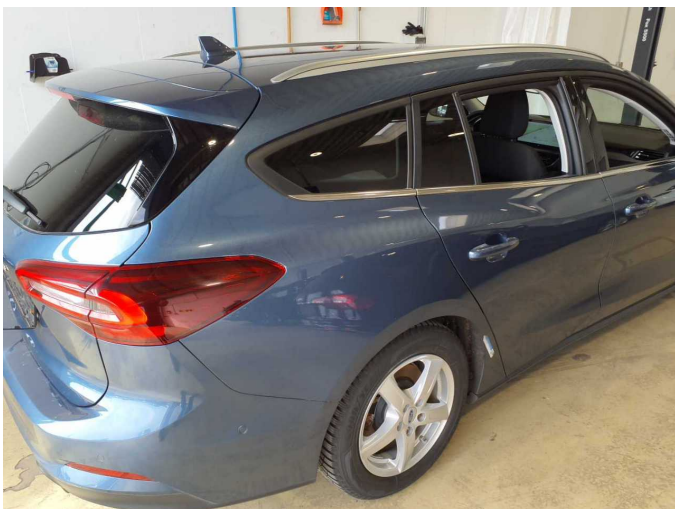
Damage 8: Boot lid / rear door: Rear spoiler - dent(s) - Repair and paint



Damage 8: Boot lid / rear door: Rear spoiler - dent(s) - Repair and paint



Damage 8: Boot lid / rear door: Rear spoiler - dent(s) - Repair and paint



Wear and tear 7: Side panel - rear right side: Side panel - dent(s) - No deduction



Wear and tear 7: Side panel - rear right side: Side panel - dent(s) - No deduction



Wear and tear 7: Side panel - rear right side: Side panel - dent(s) - No deduction



Wear and tear 8: Roof: Roof rail - right side - dent(s) - No deduction



Wear and tear 8: Roof: Roof rail - right side - dent(s) - No deduction



Wear and tear 8: Roof: Roof rail - right side - dent(s) - No deduction



Repainting 1: Door - front left side



Repainting 1: Door - front left side



Wartungshistorie

(gemäß Auftraggeber Informationen)

Fahrgestellnummer: WF0PXXGCHPPY08563
Hersteller / Modell: FORD FORD Focus Turnier 1.5 EcoBlue Start-Stopp-System Aut.
TITANIUM X

Datum	KM-Stand	Beschreibung
28.08.2025	122.106	Systemtest/Eigendiagnose
22.08.2025	121.104	Kraftstofffilter ern; Luftfiltereinsatz ern; Motoröl b. Wartung; Ölfilter ern; Regelwartungsdienst; Systemtest/Eigendiagnose; Wartung Sonstiges
09.04.2025	95.447	Bremse Sonstiges; Bremsklötze hinten; Bremsklötze vorne; Bremsscheiben + Klötze h; Bremsscheiben + Klötze v; Bremsscheiben hinten; Bremsscheiben vorne
19.03.2025	91.603	Motoröl b. Wartung; Ölfilter ern; Regelwartungsdienst; Wartung Sonstiges
08.10.2024	62.994	Kraftstofffilter ern; Luftfiltereinsatz ern; Motoröl b. Wartung; Ölfilter ern; Regelwartungsdienst; Wartung Sonstiges
24.06.2024	32.936	Motoröl b. Wartung; Ölfilter ern; Regelwartungsdienst; Wartung Sonstiges