



PEUGEOT 3008: FW-742-YP

Vinnumber:	VF3MCYHZUMS024009	Versionname:	3008 BlueHdi 130 S&S EAT8 ACTIVE BUSINESS VP
First Registrationdate:	3/02/2021	Fiscalpower:	[5P] bva 8-130CH-7cv (SUV)
Expertise Mileage:	127265	Power Kw:	
Bodytype:	SUV	Body colour:	Grey
Gearbox:	Automatic	Paint type:	Metallic
Transmission:	Front	Interior colour:	Black
Fueltype:	Diesel	Type of rims (mounted):	Aluminium
Engine functioning:	Yes	Dashboard color:	Black
Battery functioning:	Yes		
Vehicle running:	Yes		
Number of doors:	5		
Number of seats:	5		
Number head rests:	5		
Type of rims (mounted):	Aluminium		
Category:	Passenger Car		

Options

Number of keys total	1	Radio	
Number keys remote	1	Central consol F	
GPS big screen color		Luggage cover	
Windows electric F		Headlights Xenon/LED/Laser	
Cruise Control		Front parking sensors	
Steering wheel multifunctional		Rear parking sensors	
Steering wheel leather		Rear view camera	
Type of climate control	Autom climate control	Seat cover lining	Lining Other

Tyres

215/65/17/103 V				
Summer tyres:	Fr.L.	Michelin: 40%	Fr.R.	Michelin: 40%
	Re.L.	Michelin: 75%	Re.R.	Michelin: 75%
Tyre profile depth FL				5.5
Tyre profile depth FR				5.5
Tyre profile depth RL				3.4
Tyre profile depth RR				3.4
Tyre size FL				215/65 R 17 103 V
Tyre size FR				215/65 R 17 103 V
Tyre size RL				215/65 R 17 103 V
Tyre size RR				215/65 R 17 103 V
Tyre type FL				All seasons
Tyre type FR				All Seasons
Tyre type RL				All seasons
Tyre type RR				All Seasons
Tyre make FL				261
Tyre make FR				261
Tyre make RL				261
Tyre make RR				261

Assistance equipment

Remote ignition key (no insert), Missing, Repair/replace (lump sum)



Interior, Stain, Cleaning



Tyre RR, Out of tolerance, Replace



Tyre RL, Out of tolerance, Replace



Door RL, Dent(s) and scratch(es), Repair and paint (complete)



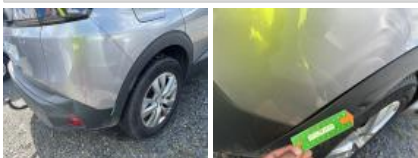
Wing RL, Dent(s) and scratch(es), Repair and paint (complete)



Bumper F, Scratch(es), Polish



Wing trim RR, Deformed / Strained, Replace



Bumper corner RL, Scratch(es), Polish



Tailgate / Boot, Scratch(es), Acceptable



Bumper R, Scratch(es), Repair and paint (complete)



Rear upper boot lining, Scratch(es), Replace



Internal boot lining L, Scratch(es), Replace



Bumper corner RR, Scratch(es), Polish



Historique Maintenance

Immatriculation: **FW-742-YP**Date de 1ère immatriculation: **03/02/2021**Modèle: **Peugeot 3008 BlueHDi 130 S&S EAT8 ACTIVE BUSINESS VP [5P] bva 8-130CH-7cv (SUV)**

Date	Kilométrage	Fournisseur	Descriptif
17/10/2025	120.123	GEMY SAINT BRIEUC	COURROIE ACCESSOIRES RPLT
	0		BALAI ESSUIE GLACE AR
	0		BALAI ESSUIE GLACE AV
	0		DISQUES PLAQUETTES AV RPLT
	0		LIQUIDE DE FREIN
	0		REVISION
	0		DIVERS CLIM
	0		FILTRE CLIM RPLT
	0		FILTRE A AIR RPLT
	0		RECYCLAGE
04/02/2025	103.014	DEKRA AUTOMOTIVE S.A	CONTROLE TECHNIQUE
24/10/2024	97.605	GEMY SAINT BRIEUC	ADBLUE
	0		REVISION
	0		RECYCLAGE
16/10/2023	80.099	GEMY SAINT BRIEUC	LIQUIDE DE FREIN
	0		PLAQUETTES AV RPLT
	0		BALAI ESSUIE GLACE AV
	0		BALAI ESSUIE GLACE AR
	0		DIVERS FREIN
	0		REVISION
10/10/2022	60.786	DELAPIERRE	REVISION ET CLIM
	0		RECYCLAGE
	0		BALAI ESSUIE GLACE AR
	0		REVISION ET CLIM
	0		REVISION ET CLIM
	0		REVISION ET CLIM
31/03/2022	41.158	DELAPIERRE	BALAI ESSUIE GLACE AV
	0		REVISION
17/09/2021	21.184	DELAPIERRE	REVISION