

Expertise

Protocol number: 45960848
Order No. / Reference: 26423481-1
Inspection date: 9 Jun 2026

Manufacturer: Volkswagen

Model: Passat Variant 2.0 TDI SCR DSG Conceptline

VIN: WVVZZZ3C8RE043847



Vehicle details

Manufacturer / Type / Model / Equipment

Volkswagen Passat Variant 2.0 TDI SCR DSG Conceptline

Vehicle Identification number WVVZZZ3C8RE043847

Mileage (Read) 89,409 km

First registration 6 May 2024

Number of holders 1

Power / Engine displacement 110 kw / 1,968 ccm

Fuel type / Cylinder Diesel / 4

Gearbox / Number of gears Automatic / 7

Type of drive Front drive

Type of vehicle Station wagon

Colour / colour code Mondsteingrau

Doors / Seats 5 / 5

Upholstery type Cloth

Colour of upholstery Grey-Black



Vehicle details

Maintenance booklet / proof	digital proof / complete	Next maintenance in	1,500 km
Last service on / at	10/2025 at 62,074 km		
Key is / should be	2 / 2	FZG documents	ZB#2 (B) was available (copy), ZB#1 (S) was not available.
		Letter No.	HA963020
Previous damage / Accident	None detectable	Repainting	None detectable
Inspection conditions	sufficient	Lifting equipment / pit	No
Test drive	Not performed	Engine function test	Performed
Manufacturer key number/ type code number	0603 / BQS 06797		
Emission standard	EURO6;WLTP;AP;PI/CI; M, N1 I	fine dust sticker	
Permitted total weight	2,200 kg	Empty weight	

Tyres

Mounted tyres

#	Tyre size	Type of tyre	Manufacturer	Tread depth
1)	215/55 R17 94V	Summer tires (with run-flat tires) on Light alloy	Continental	5mm / 5mm
2)	215/55 R17 94V	Summer tires (with run-flat tires) on Light alloy	Continental	4mm / 4mm

Legend: Tread depth information for the left tire is listed first, for the right tire it is listed second on the axle in the direction of travel.



Equipment

Standard equipment

- Airbag for driver and front passenger
- Anti-lock braking system (ABS)
- Electrically adjustable and heated exterior mirrors
- Hill start assist
- Headliner in Mistral Grey
- Diesel particulate filter
- Electronic parking brake including auto-hold function
- Remote release for luggage compartment lid
- Windscreen made of laminated safety glass, heat and sound insulating
- Transmission: 7-speed DSG
- rear window wiper
- ISOFIX mounting points
- Air conditioning
- Front headrests
- LED taillights
- Steering wheel: Multifunction steering wheel
- Makeup mirrors in the sun visors
- Multifunction display "Plus"
- Fatigue detection
- Non-smoking version
- Upholstery: "Lizard" fabric
- Radio accessories: Digital radio reception DAB+
- Rear bench seat, undivided, backrest asymmetrically split and foldable, with center armrest
- Power steering
- Seats: Front seats are height-adjustable
- Start-stop system
- Bumpers in body color
- First aid kit, warning triangle and high-visibility vest
- Electronic immobilizer
- Central locking with remote control

Extra equipment

- Anti-theft alarm system
- Steering wheel: Multifunction steering wheel in leather, with paddle shifters
- Package: Light and Sight Package "Plus"
- Wheels: 4 "Istanbul" alloy wheels (5-twin-spoke design) 7 J x 17
- Textile floor mats

- Airbag, head airbag system for front and rear passengers
- App-Connect
- Cup holders (2) front
- third brake light
- black roof rails
- Tachometer
- Electronic stability program and electromechanical brake booster
- Adjustable luggage compartment floor
- Cruise control system including speed limiter
- Rear window heated
- Interior lights front and rear with switch-off delay and dimming function
- Rear headrests (3)
- Paint finish: Solid
- LED headlights with daytime running lights
- Headlight range control
- Front center armrest, height and length adjustable, with storage box
- Mesh partition
- Emergency call service
- Radio "Composition"
- Tire pressure monitoring system (passive)
- Gearshift knob in leather
- Keyless start system without safe locking
- Seat belts: Three-point automatic seat belt
- Lane keeping assistant "Lane Assist"
- 12V power outlet on the rear of the center console
- Telephone interface
- Warning tone and light for unfastened seat belts front and rear
- Black trim strips on the side windows

- Parking aid - warning signals for obstacles in the front and rear area
- Package: "Business Premium" package including navigation
- Wheels: Tire Mobility Set omitted
- Rear side windows and rear window tinted



Brief expert findings

Documents submitted	At the time of the inspection, the vehicle registration certificate Part 2 (title) was available, but the vehicle registration certificate Part 1 (document) was not. (Copy)
VIN comparison	The vehicle identification number (VIN) was read from the vehicle and its conformity with the submitted documents was confirmed by the undersigned during the inspection.
Inspection	The inspection conditions were sufficient for the assessment of the vehicle. No lifting equipment or pit was available for inspecting the vehicle. Therefore, inspection of the vehicle's underside was only possible to a limited extent.
Test drive	No test drive/shunting maneuver was carried out during the inspection of the vehicle.
Engine function test	An engine test run was performed.

Value reducing factors

No.	Component group	Description
1	Wing mirror - left side	Cap - Scratch(es) - Smart repair
2	Rear bumper	Rear bumper - Scratch(es) - Smart repair
3	Door - front left side	Door - Scratch(es) - Smart repair
4	Boot lid / rear door	Boot lid - dent(s) - Smooth repair work
5	Tail light	Tail lamp - left side - Broken / torn - Replace
6	Tail light	Tail lamp - right side - Broken / torn - Replace
7	Door - rear right side	Door - Scratch(es) - Paint
8	Door - front right side	Door - Scratch(es) - Paint
9	Vehicle glazing	Windscreen - Broken / torn - Replace

Wear and tear

No.	Component group	Description
1	Door - rear left side	Door - Scratch(es) - No deduction
2	Front bumper	Front bumper - Stone chips - No deduction
3	Roof	Roof - Dent / paintcoat damage - No deduction
4	Documents	Service book (Digitaler Ausdruck) - Missing - No deduction

The vehicle shows signs of wear and tear commensurate with its age and use.

Order/Scope of Order

An order was placed to prepare a sales report for the described vehicle. This report includes the following:

- Description of key vehicle information
- Documentation of equipment features
(*Delivery by third-party service providers*)
- Documentation of damage, defects, missing parts
- Documentation of prior damage, unrepaired prior damage, repainting
- A brief visual or functional inspection of the equipment details, if possible.
(*Functional testing of driver assistance systems is not included in the scope of services!*)
- a photographic documentation of the vehicle



Basis for the order

This product is based on the guidelines for vehicle returns and valuations published by Alphabet Fleet GmbH. The expert makes the specific findings in each individual case objectively, within the framework of the prescribed standards, based on their own expertise.

The vehicle inspection takes place in a fully assembled, unassembled state.

Damage or defects that can only be detected during disassembly/diagnostic work or through further investigation remain within the realm of prognostic risk. An increased risk exists due to concealed defects caused by fraudulent misrepresentation and which were not identifiable by the expert.

Damage or defects resulting from normal use or wear and tear of the vehicle will be accepted in accordance with the applicable standard.

There was no explicit identification or monetary consideration of the expected features within the product.

Features which, in their nature and extent, slightly exceed normal use but do not constitute unacceptable damage, will be documented and indicated as signs of wear, if applicable.

Damage or defects that, according to the applicable standard, can no longer be attributed to normal use or wear and tear are listed under "Value Reducing Factors" in the product description.

Depending on the product specification, a monetary ID can be provided. If this takes place, the costs can be 100% d or pro rata depending on the vehicle's age and mileage.

Previous damages

No apparent prior damage that had been repaired could be found on the vehicle.



Figure 1: Diagonal front (left)



Figure 2: Diagonal front (right)



Figure 3: Diagonal rear (left)



Figure 4: Diagonal rear (right)



Figure 5: Interior - front



Figure 6: Interior - rear



Figure 7: Instrument cluster



Figure 8: Instrument panel



Figure 9: Interior 360° view



Figure 10: Cargo area

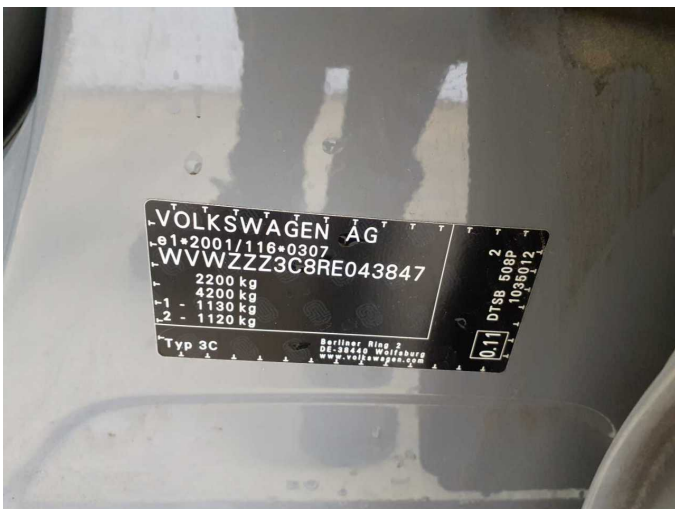


Figure 11: VIN



Figure 12: Mounted tyres



Figure 13: Documents



Figure 14: Navigation



Figure 15: Misc.



Figure 16: Misc.

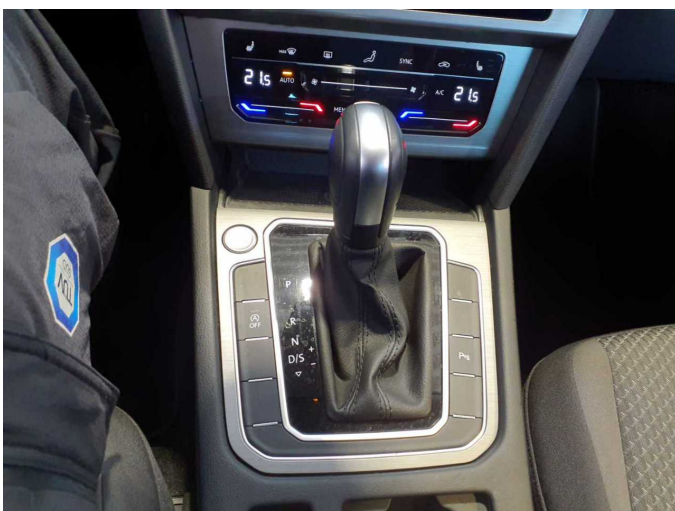


Figure 17: Misc.

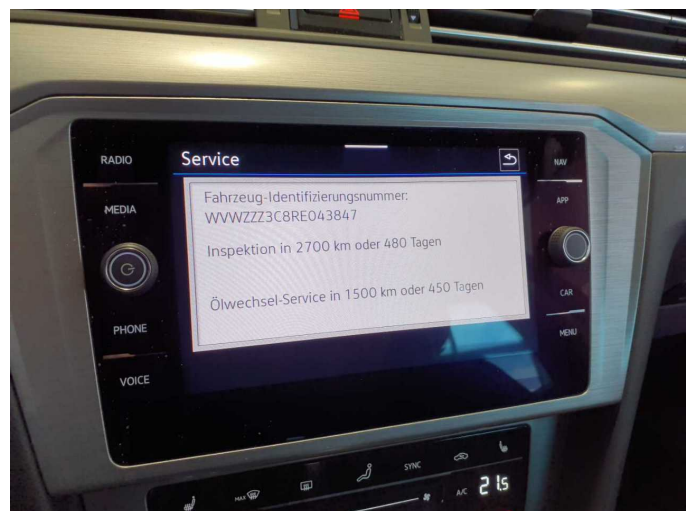


Figure 18: Misc.



Figure 19: Misc.



Figure 20: Misc.



Figure 21: Misc.



Figure 22: Misc.



Figure 23: Misc.



Damage 1: Wing mirror - left side: Cap - Scratch(es) - Smart repair



Damage 1: Wing mirror - left side: Cap - Scratch(es) - Smart repair



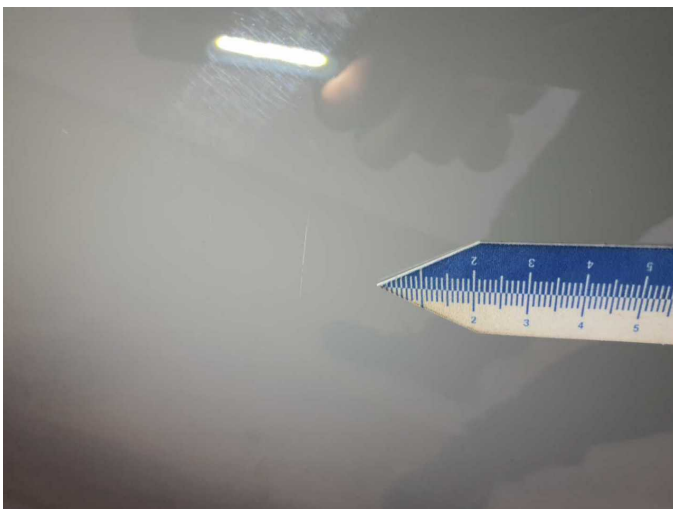
Damage 2: Rear bumper: Rear bumper - Scratch(es) - Smart repair



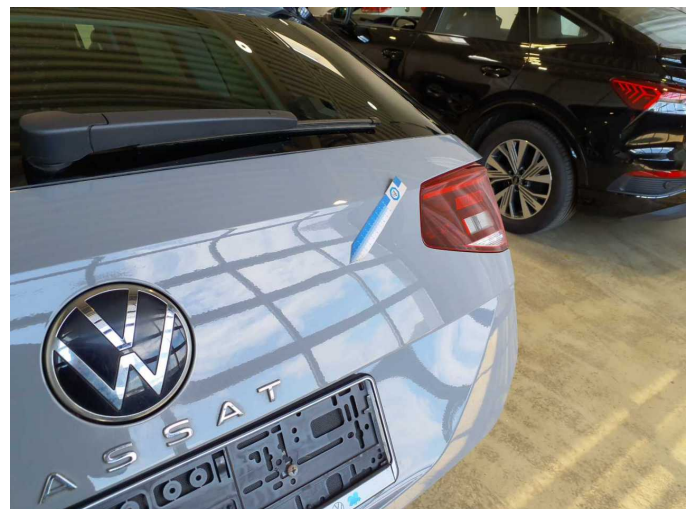
Damage 2: Rear bumper: Rear bumper - Scratch(es) - Smart repair



Damage 3: Door - front left side: Door - Scratch(es) - Smart repair



Damage 3: Door - front left side: Door - Scratch(es) - Smart repair



Damage 4: Boot lid / rear door: Boot lid - dent(s) - Smooth repair work



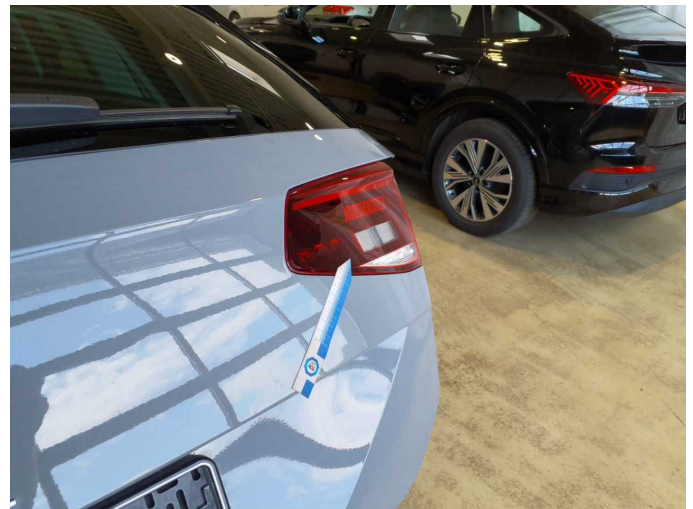
Damage 4: Boot lid / rear door: Boot lid - dent(s) - Smooth repair work



Damage 5: Tail light: Tail lamp - left side - Broken / torn - Replace



Damage 5: Tail light: Tail lamp - left side - Broken / torn - Replace



Damage 6: Tail light: Tail lamp - right side - Broken / torn - Replace



Damage 6: Tail light: Tail lamp - right side - Broken / torn - Replace



Damage 7: Door - rear right side: Door - Scratch(es) - Paint



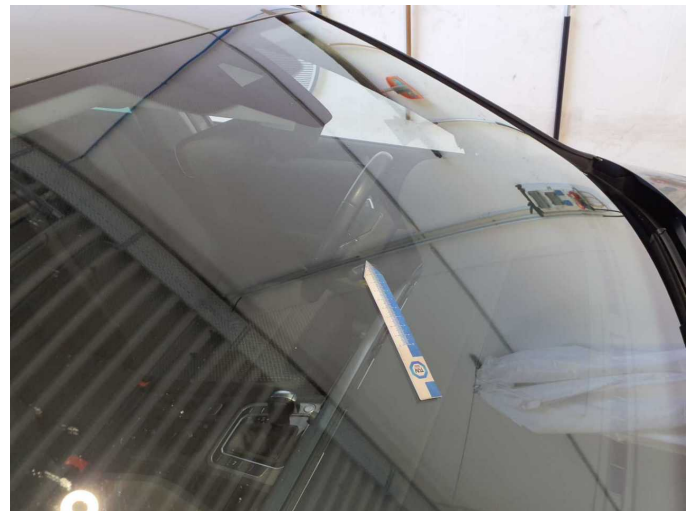
Damage 7: Door - rear right side: Door - Scratch(es) - Paint



Damage 8: Door - front right side: Door - Scratch(es) - Paint



Damage 8: Door - front right side: Door - Scratch(es) - Paint



Damage 9: Vehicle glazing: Windscreen - Broken / torn - Replace



Damage 9: Vehicle glazing: Windscreen - Broken / torn - Replace