

Expertise

Protocol number: 46208953
Order No. / Reference: 26581619
Inspection date: 26 Jun 2026

Manufacturer: Audi

Model: A6 Avant 45 TDI quattro S tronic sport

VIN: WAUZZZF20NN036403



Vehicle details

Manufacturer / Type / Model / Equipment

Audi A6 Avant 45 TDI quattro S tronic sport

Vehicle Identification number WAUZZZF20NN036403

Mileage (Read) 133,950 km

First registration 14 Mar 2022

Number of holders 2

Power / Engine displacement 180 kw / 2,967 ccm

Fuel type / Cylinder Hybrid Diesel / E / 6

Gearbox / Number of gears Automatic / 7

Type of drive All-wheel drive

Type of vehicle Station wagon

Colour / colour code Black University

Doors / Seats 5 / 5

Upholstery type Alcantara / Leather

Colour of upholstery Anthracite-Black



Vehicle details			
Maintenance booklet / proof	digital proof / complete	Next maintenance in	10,300 km
Last service on / at	01/2026 at 124,629 km		
Key is / should be	2 / 2	FZG documents	ZB#2 (B) was available (copy), ZB#1 (S) was not available.
		Letter No.	GJ024911
Previous damage / Accident	Detectable	Repainting	None detectable
Inspection conditions	sufficient	Lifting equipment / pit	No
Test drive	Not performed	Engine function test	Performed
Manufacturer key number/ type code number	0588 / BZA 00609		
Emission standard	EURO6;WLTP;AP;PI/CI; M, N1 I	fine dust sticker	
Permitted total weight	2,550 kg	Empty weight	

Tyres

Mounted tyres				
#	Tyre size	Type of tyre	Manufacturer	Tread depth
1)	245/45 R19 102Y	Summer tyres on Light alloy	Continental	5mm / 5mm
2)	245/45 R19 102Y	Summer tyres on Light alloy	Continental	5mm / 5mm
Additional tyres				
#	Tyre size	Type of tyre	Manufacturer	Tread depth
1)	225/60 R17 99H	Winter tyres on Light alloy	Pirelli	6mm / 6mm
2)	225/60 R17 99H	Winter tyres on Light alloy	Pirelli	6mm / 6mm
Replacement				
Typ	Tyre size	Type of tyre	Manufacturer	Tread depth
	Tirefit	Expiration date 04/2027		

Legend: Tread depth information for the left tire is listed first, for the right tire it is listed second on the axle in the direction of travel.

TÜV SÜD Auto Partner GmbH
Wiesenring 2
04159 Leipzig

Inspection location
Hartmann Fleet Professionals GmbH
Leerenstraße 25
29683 Bad Fallingbommel



Equipment



Standard equipment

- AdBlue tank (12 liters) (tank for AdBlue solution for reducing nitrogen oxides in the exhaust gas using an SCR system)
- "quattro" all-wheel drive with ultra technology (permanently available all-wheel drive with actively controlled torque distribution, ultra technology and wheel-selective torque control. The system includes an electronically controlled all-wheel drive coupling, a friction clutch integrated into the rear axle differential and an electronic differential lock (EDS) for all driven wheels. The ultra technology allows for a reduction in drag losses in the all-wheel drive system by opening both couplings.)
- Audi connect Emergency Call & Service with m.connect Remote & Control (The Audi connect Emergency Call & Service services ensure a safe feeling on every journey. - Emergency call - Online breakdown call - Audi damage service - Audi service appointment online Audi connect Remote & Control: - Vehicle status - Remote locking/unlocking - Parking position - Remote control of auxiliary heating - Push notification of anti-theft alarm system)
- Audi pre sense front (Within system limits, it can warn of impending collisions depending on the situation and speed and initiate appropriate braking. The system is active from approximately 5 km/h. Pedestrians and cyclists can be detected at speeds up to approximately 85 km/h and vehicles at speeds up to 250 km/h: If an impending frontal collision is detected, the system warns the driver visually, audibly, and haptically in a multi-stage process.)
- Diesel particulate filter (DPF) with nitrogen oxide catalyst and AdBlue tank
- Door sill trims with aluminum inlay front and rear (unlit)
- Driver information system with color display (7-inch color display; display content: speed (digital speedometer), time, mileage, outside temperature, fuel warning with remaining range, gear shift recommendation, current radio station or music track, radio and media lists, telephone menu, navigation information and driver assistance system alerts (if available), on-board computer; the integrated efficiency program supports the driver with consumption data overviews and fuel-saving tips for more economical driving, break recommendation)
- Cruise control including speed limiter (The cruise control maintains the desired speed from 20 to 250 km/h by adjusting engine power or by actively applying the brakes, provided engine and braking performance allow. It is operated via a separate steering column stalk, including a display of the set speed in the driver information system. The speed limiter helps to prevent exceeding a preset maximum speed.)
- Interior mirror dimming
- ISOFIX and Top Tether child seat attachment for the outer rear seats (holding device for the practical attachment of ISOFIX child seats with an additional upper attachment point (Top Tether) on the outer rear seats)
- Headrests (4) (front ones manually height adjustable)
- Paint finish: Solid
- Airbag for driver and front passenger (full-size airbag, with front passenger airbag deactivation)
- Airbag: Front side airbags and head airbag system (front side airbags integrated into the seatbacks - with additional head airbag system: deploys in front of the side window area and thus protects the front and outer rear passengers in the event of a side impact)
- Anti-lock braking system (ABS)
- Audi connect Navigation & Infotainment (Online Points of Interest, Online Traffic Information, Hazard Information, Weather Information, Access to Calendar, myAudi Navigation, WLAN Hotspot, Online News, On-Street Parking, User Profiles)
- Audi drive select (adjustment of vehicle characteristics in the available modes auto, comfort, dynamic, efficiency, allroad, offroad, individual by adjusting steering assistance, engine characteristics or shift characteristics, dynamic all-wheel steering, damper control, adaptive air suspension, sport differential, ultra technology, adaptive speed assistant, Matrix LED headlights and setting of other optional equipment.)
- Electrically adjustable and heated exterior mirrors (with integrated LED indicator lights, including heated windshield washer nozzles, aspherical mirror glass)
- Exterior mirror housings in body color
- third brake light
- Fabric headliner
- Aluminum roof rails
- Decorative inlays aluminum fragment (for dashboard, door panels and center console; including aluminum-look trim)
- Tachometer
- Electronic Stability Control (ESC)
- Remote key (locks and unlocks the doors, luggage compartment and fuel filler flap. Driving authorization is granted without actively using the key (keyless go). The driver must be in the vehicle and have the key with them. The engine is started and stopped via the engine start/stop button in the center console.)
- Electrically opening and closing tailgate (The tailgate can be opened electrically by pressing the button on the vehicle key, in the driver's door, or the soft-touch button on the tailgate handle. To close the tailgate: simply press the button on the inside of the tailgate, the button in the driver's door, or the button on the vehicle key. A6 Avant: Opening the tailgate in low-ceiling areas is made easier by a programmable opening angle.)
- Transmission: S tronic 7-speed
- Interior lighting (front and rear roof module, including reading lights (capacitively switched), illuminated vanity mirrors for driver and front passenger, entry lights on the underside of the front doors, front/rear door controls, front storage compartment, glove compartment, front/rear footwell lighting, right/left trunk lighting)



- LED headlights (The headlights have the following functions: - Daytime running lights - Low beam - High beam - Position lights - Turn signals (incandescent bulb technology) - All-weather lights (to reduce glare in poor visibility conditions) LED taillights - Turn signals, brake lights, tail lights, reversing lights and rear license plate lights (LED technology)
- Gloss package (window channel strips in anodized aluminum - B-pillar trim exterior in high-gloss black - rear light trim in chrome)
- Non-smoking package (no ashtray in the front center console, one 12-volt socket each in the front and rear)
- Progressive steering (increases driving dynamics and driving comfort through more direct steering response (e.g. on winding country roads or when turning) and reduced steering effort (e.g. when parking and maneuvering); driving characteristics through a steering ratio dependent on the steering angle and speed-dependent steering assistance; various modes, adjustable via Audi drive select)
- Wheel: Tire repair kit
- Radio accessories: 8 speakers (passive) front and rear
- Rail system with fixing set (loading floor in the luggage compartment with one rail each on the left and right - with four variable lashing eyes which can be variably positioned in the rail system - with tension strap on the right for fixing objects and a net on the left - with two hooks on the right and left)
- Seat covers in fabric
- Seats: 4-way lumbar support (electrically adjustable, horizontally and vertically)
- Seats: Front sports seats (with manual adjustment of seat height, seat longitudinal position, seat tilt, backrest tilt, headrest height and distance and belt height with pronounced seat side bolsters for better lateral support in curves, extendable thigh support and electric 4-way lumbar support)
- Sun visor on driver and passenger side
- Lane Departure Warning (within system limits, helps prevent unintentional lane departures. If the system is activated and ready, and the driver has not used the turn signal, the Lane Departure Warning helps prevent crossing detected lane markings by making corrective steering interventions. Additional steering wheel vibration can be set at the driver's request. Operating range from approximately 60 to a maximum of 250 km/h)
- Electronic immobilizer
- Central locking
- 2-zone automatic climate control (separate temperature distribution for driver and front passenger side, rear compartment air conditioning via air vents in the rear center console, defroster nozzles for windshield and side windows, combined pollutant and fine dust filter)
- Steering wheel: Leather steering wheel, 3-spoke, with multifunction and paddle shifters (paddle shifters allow manual changing of the driving modes.)
- Steering column, manually adjustable in height and axis
- Front center armrest (adjustable in tilt, movable in length)
- MMI Navigation with MMI touch response (10.1-inch color display (1,540 × 720) additional display of the navigation map or arrow display in the driver information system map update 3D map display efficiency assistant online traffic information MMI search MMI touch response for quick, intuitive operation easy operation of the infotainment system via natural language interaction detailed route information input of up to 10 waypoints selected portfolio Audi connect Navigation & Infotainment)
- Wheel: Alloy wheels 5-arm design (8 J x 18 with tires 225/55 R 18)
- Wheel: Tire pressure monitoring system (visual and audible warning in case of pressure loss in one or more wheels - display in the driver information system)
- Radio: MMI Radio plus with MMI touch response (10.1-inch color display - driver information system with 7" TFT color display - Audi music interface; 2 USB-C ports with data and charging function - Bluetooth interface (hands-free calling and audio streaming) - separate MMI touch control unit with 8.6" color display including MMI touch response with haptic feedback; for controlling the climate control function and input field for handwriting recognition - AM/FM phase diversity - speed-dependent volume adjustment - DAB+)
- Seats: Split-folding rear seat backrest Avant (distinctive outer rear seats, visually adapted to the front seats, and an additional central seating option - 3 rear L-shaped headrests, manually height-adjustable - three 3-point seat belts - rear seat backrest split 40:20:40 or fully foldable - one-piece, foldable rear center armrest with storage compartment - with remote backrest release in the boot, removable partition net, to be attached to the body or to the folded-down rear seat backrest)
- Start-stop system (helps reduce fuel consumption and CO2 emissions by switching off the engine during stationary phases, e.g. at traffic lights. For restarting, the starting process is initiated as soon as the foot brake is released. Can be deactivated at any time via a button.)
- Glazing: Windscreen in heat-insulating glazing
- Glazing: Rear window, rear door and side windows in clear glass
- Heat-insulating glazing on the sides and rear (green tinted, heated rear window with timer)



Extra equipment

- Adaptive windscreen wipers with integrated washer nozzles (adaptive windscreen wiping system for best possible visibility in all weather conditions, even during the wiping process - cleaning fluid is sprayed directly in front of the wiper blades and wiped away almost without delay - heated)
- Ambient lighting package (in addition to the standard interior lighting: - Ambient fabric lighting in the front/rear doors - Pre-view lighting from the front/rear door handles - Ambient lighting of the instrument panel)
- Assistance Package Plus (Parking Assistance Package with Remote Parking Assist Plus (surround view cameras, Remote Parking Assist Plus) - City Assistance Package (Intersection Assist, Lane Change Warning, Exit Warning, Rear Cross Traffic Assist, Audi pre sense 360°) - Tour Assistance Package (Adaptive Driving Assist, Adaptive Speed Assist, Speed Limiter, Efficiency Assist, Turn Assist, Evasive Steering Assist, Camera-based Traffic Sign Recognition, Emergency Assist, High Beam Assist))
- Automatically dimming, frameless interior mirror (can increase safety, as reduced glare improves the perception of following traffic at night - less glare at night, among other factors, can help to recognize other vehicles in the interior mirror more quickly and better - reduced glare can help to prevent eye fatigue)
- Black fabric headliner
- Business Package (Assistance Package Tour: Adaptive Driving Assistant supports the driver with acceleration, braking, maintaining speed and distance, and lane keeping. Adaptive Cruise Control, Speed Limiter. Efficiency Assistant supports the driver with predictive driving. Parking Aid Plus, 4-zone automatic climate control, heated front seats, Audi phone box, automatically dimming interior mirror, automatically dimming exterior mirrors, adaptive windscreen wipers with integrated washer nozzles, high-beam assistant)
- Control buttons in glossy black with haptic feedback and aluminum-look interior (control button strip in the center console and light buttons in glossy black, control button and light button strip with haptic feedback - light button strip including proximity sensor - control buttons for driver assistance systems, buttons for parking brake, auto-hold function, central locking front and rear, rear locking, frame around the interior door handles and window regulators in aluminum look)
- Fuel tank (73 liters) (fuel tank for 73 liters of gasoline/diesel fuel)
- Headrests: variable headrests for front seats (with manual adjustment of headrest height and distance)
- High beam assist (within the system's limits, it automatically detects oncoming headlights, taillights of other road users, and built-up areas. Depending on the traffic situation, the high beam is automatically switched on or off.)
- Radio accessories: USB ports with charging function in the rear (2 USB-C ports with charging function in the rear in addition to two further ports in the first row of seats. Easy connection using a USB cable, 15 watts output)
- AdBlue tank with increased filling volume (AdBlue tank with 22 liter filling volume - for diesel vehicles with SCR technology, to reduce nitrogen oxides in the exhaust gas)
- Airbag: Front and rear side airbags including head airbag system and illuminated seatbelt buckles (Side airbags in the rear, in addition to the front side airbags and the head airbag system, offer extra protection for rear passengers. Illuminated seatbelt buckles increase passenger comfort and enhance the interior with subtle, high-quality lighting.)
- Audi virtual cockpit plus (3 individual display options: Dynamic, Sport and Classic - operation via the multifunction steering wheel - configuration of on-board computer values in the tachometer - display of the navigation map as a 3D terrain model on the high-resolution 12.3-inch full HD color display - permanent display of navigation information in the speedometer area when route guidance is active - break recommendation)
- Black Optics Package (black accents in the area of the Audi Singleframe, the trim strips on the side windows, the front and rear bumpers including tailpipe trims - exterior mirror housings in black)
- Black Optics Package Plus (Black optics package with Audi rings front/rear and model designation in black)
- Camera-based traffic sign recognition (Traffic sign recognition can detect and display no-overtaking zones and speed limits. Within its system limitations, the system can also detect the beginning and end of motorways, expressways, towns and villages, and traffic-calmed areas, and displays the corresponding speed limit. Additionally, within its system limitations, it provides situation-dependent display and evaluation for wet conditions and time-of-day-dependent speed limits.)
- Chassis: Sport chassis (with firmer spring and damping for more direct road contact and sportier handling, lowered by 20 mm compared to standard chassis, shock absorbers and coil springs on front and rear axles)
- Comfort key with sensor-controlled luggage compartment unlocking (The vehicle can be opened by operating the door handle without actively using the key. To lock the vehicle from the outside, simply touch one of the sensor buttons on the door handles. The drive authorization is also activated without actively using the comfort key. The driver must be inside the vehicle and have the comfort key with them. The engine is started and stopped using the engine start/stop button in the center console.)
- Front and rear seat heating (heats seat and backrest center panels; with leather upholstery, sport seats and sport seats plus also seat side bolsters - individually adjustable in multiple stages for driver and front passenger on the climate control unit - additionally for the outer rear seats, separately adjustable in multiple stages)
- Glazing: Privacy glazing (tinted windows) (rear window, rear door and side windows tinted)



- S line Sport package (5-arm alloy wheels (S design), 8.5J x 19 with 245/45 R19 tires, sport suspension, illuminated front and rear door sills, front door sills with S lettering, S line emblem on front fenders, 3-spoke leather steering wheel with multifunction controls and shift paddles, steering wheel grips and selector lever knob with S emblem in perforated leather, S line seat covers in fabric/leather combination with S embossing on the front seat backrests, brushed dark aluminum trim, interior, dashboard and headliner in black, stainless steel footrest and pedals, floor mats)
- Seat covers in Dinamica Frequency microfiber/leather combination with S embossing (center section of the front seats and the two outer rear seats in Dinamica Frequency microfiber - side bolsters, headrest center sections and center armrest in black or rotor grey leather with contrasting stitching - with S embossing in the backrests of the front seats)
- Sun visor on driver and passenger side, extendable
- Swiveling towbar with electric release (with swiveling ball head, trailer stabilization via electronic stability control (ESC), release via button in the luggage compartment, the integrated swiveling system socket allows continuous operation of electrical devices in the trailer or caravan while driving)
- Telephone: Audi smartphone interface (The Audi smartphone interface (Android Auto and Apple CarPlay) connects your smartphone to your Audi and seamlessly displays your smartphone content directly on the MMI display via USB. Navigation, telephony, music and selected third-party apps can be conveniently controlled via the MMI touchscreen as well as via voice control on your smartphone.)
- Wheel: Light alloy wheels 5-twin-spoke design, graphite grey, polished (8.5 J x 19 with tires 245/45 R 19)
- Head-up display (projects speed and other driver-relevant information from optional equipment such as assistance systems and navigation, as well as warnings, into the driver's direct field of vision; height-adjustable; enables high-contrast, multi-colored display with reduced eye strain from the road)
- Package: Storage package (2 cup holders in the rear center armrest, luggage compartment net for fixing to the lashing eyes on the luggage compartment floor)
- Panoramic glass roof (2-piece) (extra-large, tinted glass surface for a progressive design; electric operation for tilting and opening, including an electrically operated, lightproof sunshade; convenient opening and closing from the outside via the remote key ensures a pleasant, light-flooded interior; improved interior climate through efficient ventilation; integrated wind deflector reduces wind noise when the roof is open)
- Parking Assistance Package with Remote Parking Assist Plus (Four wide-angle surround-view cameras cover the entire area immediately around the vehicle and offer a variety of different views for even more convenient maneuvering. The views can be controlled via the upper MMI display. - Remote Parking Assist Plus: Remote Parking Assist Plus enables remote-controlled parking in and out of parking spaces. The vehicle takes over steering, acceleration, braking, and switching off the engine.)
- Radio accessories: Bang & Olufsen Premium Sound System with 3D sound (sound reproduction via 16 speakers including 3D sound speakers, center speaker and subwoofer, 15-channel amplifier with a total output of 705 watts; spatial sound reproduction thanks to the 3D sound feature for the front seats. This is created by additional speakers in the A-pillars, the midrange speakers and Fraunhofer Symphoria technology. The 3D sound can be played back with all sources.)
- Tour Assistance Package (Adaptive Driving Assistant - Adaptive Cruise Control, Speed Limiter - Efficiency Assistant supports the driver in anticipatory and therefore fuel-saving driving - Evasive Steering Assist helps the driver to steer the vehicle around an obstacle in a critical situation - Turning Assist - Emergency Assist - High Beam Assist - Camera-based Traffic Sign Recognition)

Brief expert findings

Documents submitted	At the time of the inspection, the vehicle registration certificate Part 2 (title) was available, but the vehicle registration certificate Part 1 (document) was not. (Copy)
VIN comparison	The vehicle identification number (VIN) was read from the vehicle and its conformity with the submitted documents was confirmed by the undersigned during the inspection.
Inspection	The inspection conditions were sufficient for the assessment of the vehicle. No lifting equipment or pit was available for inspecting the vehicle. Therefore, inspection of the vehicle's underside was only possible to a limited extent.
Test drive	No test drive/shunting maneuver was carried out during the inspection of the vehicle.
Engine function test	An engine test run was performed.



Value reducing factors

No.	Component group	Description
1	Misc.	Main inspection - No evidence - No deduction
2	Wing mirror - right side	Cap - Scratch(es) - Smart repair
3	Seat - front	Seat cover - left side - Scratch(es) - Smart repair
4	Door - front right side	Door - Scratch(es) - Smart repair
5	Sill - right side	Trim - Scratch(es) - Smart repair
6	Trim / covers	Trim / covers (Zierleiste) - Broken / torn - Replace
7	Seat - front	Backrest cover - right side (Rückteil) - Broken / torn - Replace
8	Seat - rear	Upholstery - Scratch(es) - Smart repair
9	Body	B-pillar - left side - Deformed - Smart repair
10	Trim / covers	Boot lid - interior trim - Scratch(es) - Replace
11	Multimedia system	Screen (Hinten) - Scratch(es) - Loss in value
12	Roof	Roof - Scratch(es) - Paint
13	Vehicle glazing	Rear window - Scratch(es) - Replace
14	Front bumper	Front bumper (Und Steinschlag) - Scratch(es) - Paint

Wear and tear

No.	Component group	Description
1	Bonnet	Bonnet - Dent / paintcoat damage - No deduction
2	Side panel - rear right side	Side panel - dent(s) - No deduction
3	Wheel / tyres	Alloy rim - front right side - Scratch(es) - No deduction
4	Vehicle glazing	Windscreen - Stone chips - No deduction
5	Wheel / tyres	Alloy rim - rear right side - Scratch(es) - No deduction
6	Door - rear right side	Door - Scratch(es) - No deduction
7	Trim / covers	Floor mats - Worn - No deduction

The vehicle shows signs of wear and tear commensurate with its age and use.

Accident damages

No. Accident

- 1 Rear, Side - left

Order/Scope of Order

An order was placed to prepare a sales report for the described vehicle. This report includes the following:

- Description of key vehicle information
- Documentation of equipment features
(*Delivery by third-party service providers*)
- Documentation of damage, defects, missing parts
- Documentation of prior damage, unrepaired prior damage, repainting
- A brief visual or functional inspection of the equipment details, if possible.
(*Functional testing of driver assistance systems is not included in the scope of services!*)
- a photographic documentation of the vehicle



Basis for the order

This product is based on the guidelines for vehicle returns and valuations published by Alphabet Fleet GmbH. The expert makes the specific findings in each individual case objectively, within the framework of the prescribed standards, based on their own expertise.

The vehicle inspection takes place in a fully assembled, unassembled state.

Damage or defects that can only be detected during disassembly/diagnostic work or through further investigation remain within the realm of prognostic risk. An increased risk exists due to concealed defects caused by fraudulent misrepresentation and which were not identifiable by the expert.

Damage or defects resulting from normal use or wear and tear of the vehicle will be accepted in accordance with the applicable standard.

There was no explicit identification or monetary consideration of the expected features within the product.

Features which, in their nature and extent, slightly exceed normal use but do not constitute unacceptable damage, will be documented and indicated as signs of wear, if applicable.

Damage or defects that, according to the applicable standard, can no longer be attributed to normal use or wear and tear are listed under "Value Reducing Factors" in the product description.

Depending on the product specification, a monetary ID can be provided. If this takes place, the costs can be 100% d or pro rata depending on the vehicle's age and mileage.

Previous damages

Non-repaired previous damages were found at the vehicle. The necessary repair costs are listed in the expert report or if necessary, are listed in detail in a separately enclosed repair cost calculation.

Comments

Die beigefügte Reparaturkostenkalkulation wurde nach bestem Wissen und Gewissen unter eingeschränkter Besichtigungsbedingung im demontagefreien Zustand erstellt. Es können aufgrund verdeckter Beschädigung erhebliche Mehrkosten und somit Abweichung der für den Unfall ausgewiesenen Reparaturkosten nicht ausgeschlossen werden.



Figure 1: Diagonal front (left)



Figure 2: Diagonal front (right)



Figure 3: Diagonal rear (left)



Figure 4: Diagonal rear (right)



Figure 5: Interior - front



Figure 6: Interior - rear



Figure 7: Instrument cluster



Figure 8: Instrument panel



Figure 9: Interior 360° view



Figure 10: Cargo area



Figure 11: VIN



Figure 12: Mounted tyres



Figure 13: Documents



Figure 14: Additional tyres

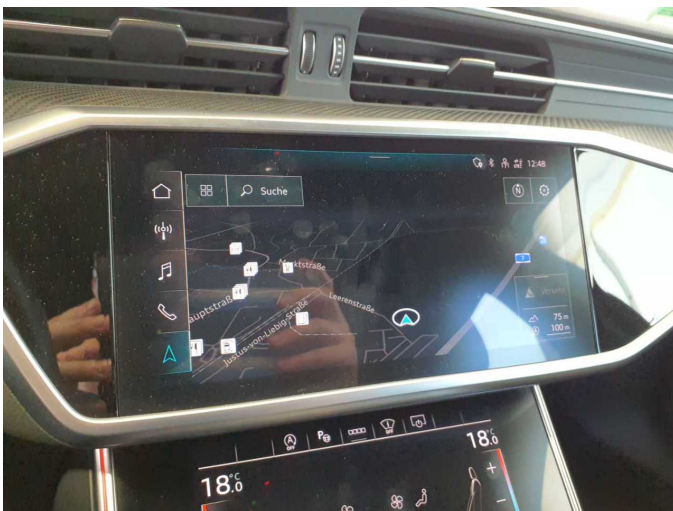


Figure 15: Navigation



Figure 16: Misc.



Figure 17: Misc.

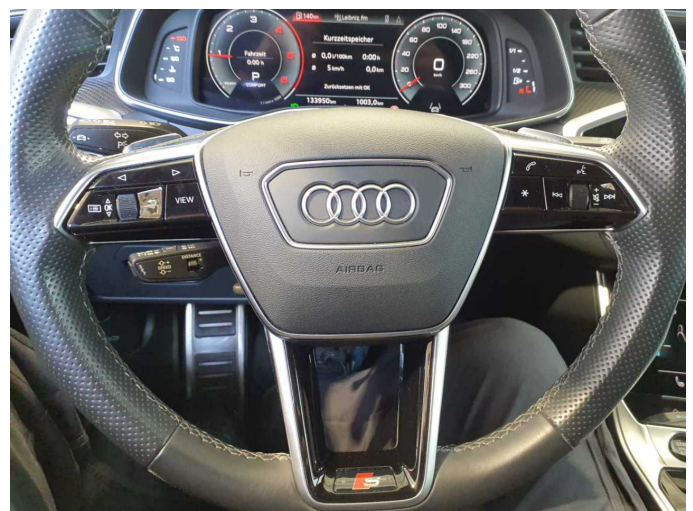


Figure 18: Misc.



Figure 19: Misc.



Figure 20: Misc.



Figure 21: Misc.

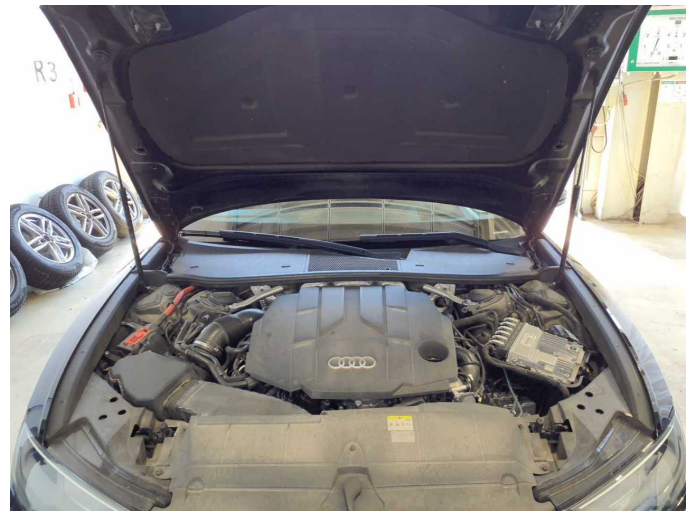


Figure 22: Misc.

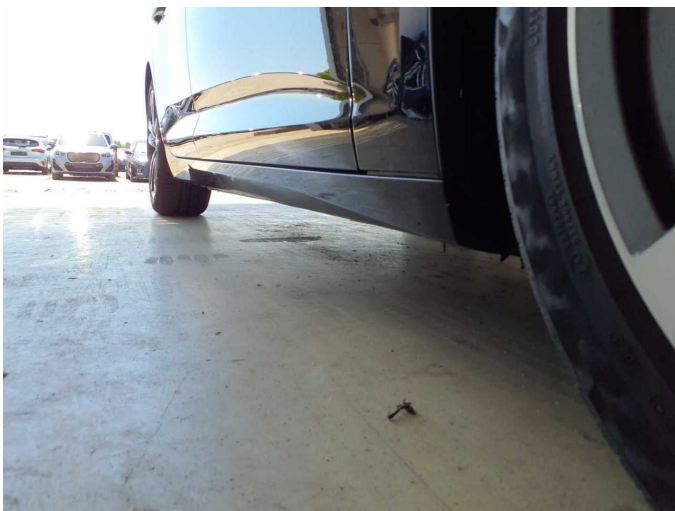


Figure 23: Misc.



Figure 24: Misc.



Figure 25: Misc.



Figure 26: Misc.

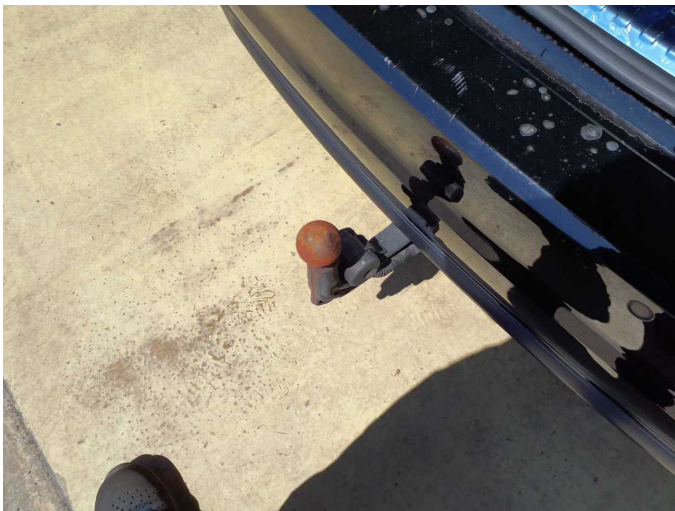


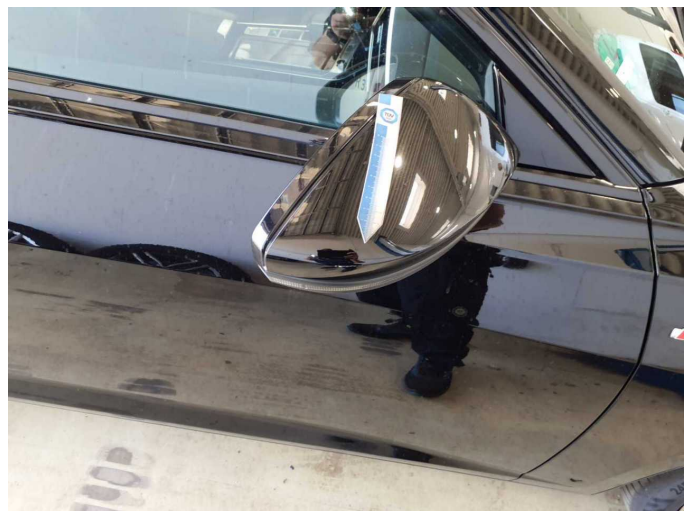
Figure 27: Misc.



Figure 28: Misc.



Figure 29: Misc.



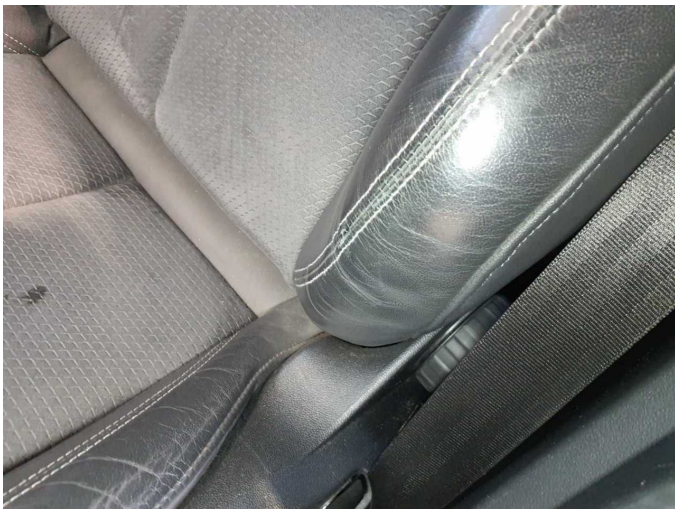
Damage 2: Wing mirror - right side: Cap - Scratch(es) - Smart repair



Damage 2: Wing mirror - right side: Cap - Scratch(es) - Smart repair



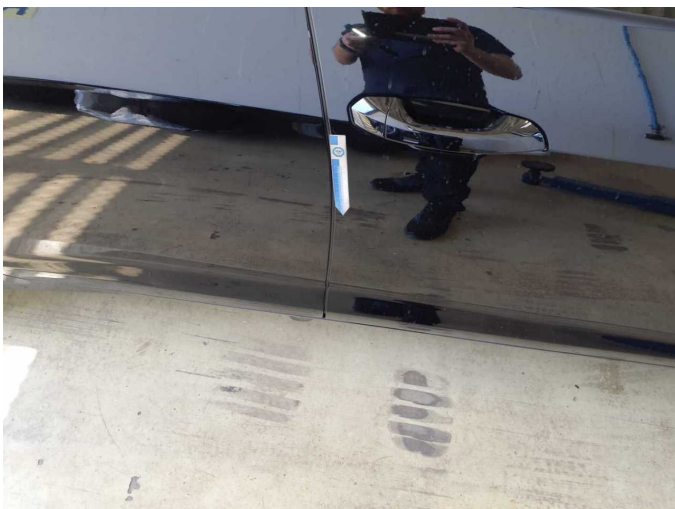
Damage 3: Seat - front: Seat cover - left side - Scratch(es) - Smart repair



Damage 3: Seat - front: Seat cover - left side - Scratch(es) - Smart repair



Damage 3: Seat - front: Seat cover - left side - Scratch(es) - Smart repair



Damage 4: Door - front right side: Door - Scratch(es) - Smart repair



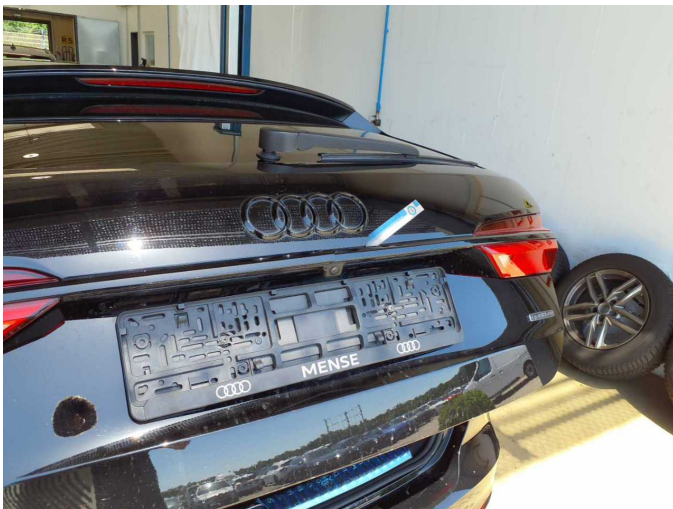
Damage 4: Door - front right side: Door - Scratch(es) - Smart repair



Damage 5: Sill - right side: Trim - Scratch(es) - Smart repair



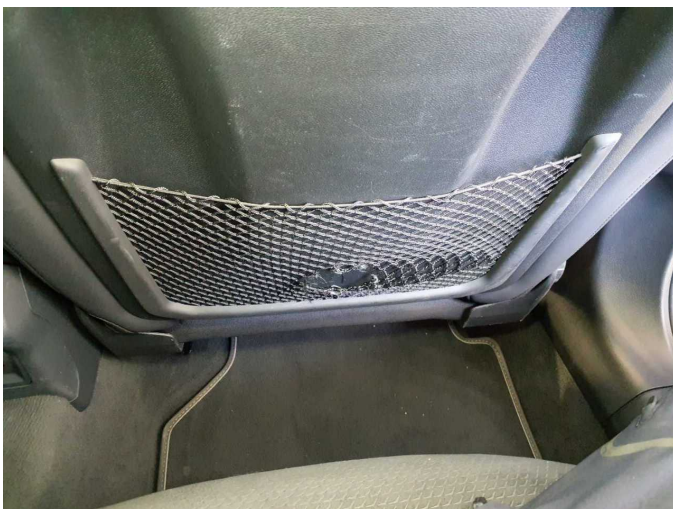
Damage 5: Sill - right side: Trim - Scratch(es) - Smart repair



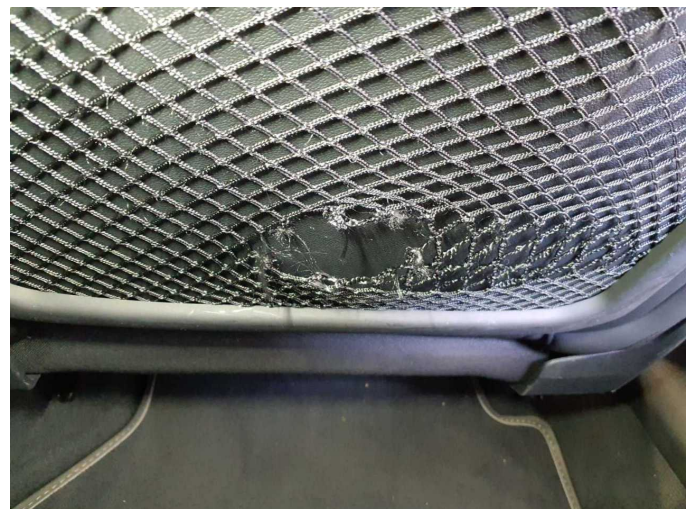
Damage 6: Trim / covers: Trim / covers (Zierleiste) - Broken / torn - Replace



Damage 6: Trim / covers: Trim / covers (Zierleiste) - Broken / torn - Replace



Damage 7: Seat - front: Backrest cover - right side (Rückteil) - Broken / torn - Replace



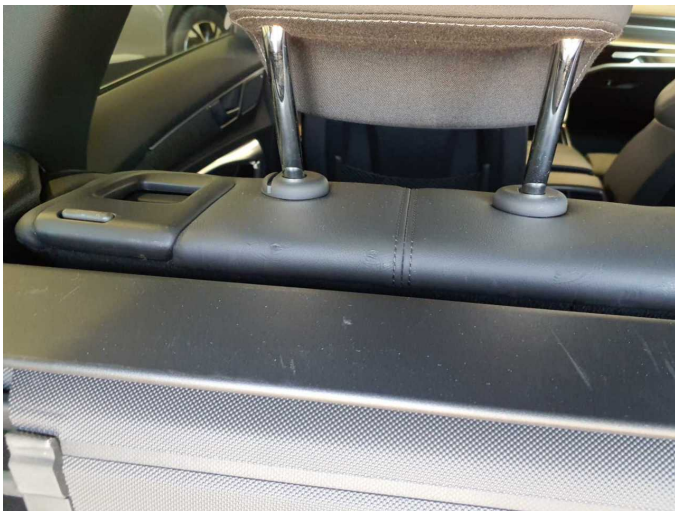
Damage 7: Seat - front: Backrest cover - right side (Rückteil) - Broken / torn - Replace



Damage 8: Seat - rear: Upholstery - Scratch(es) - Smart repair



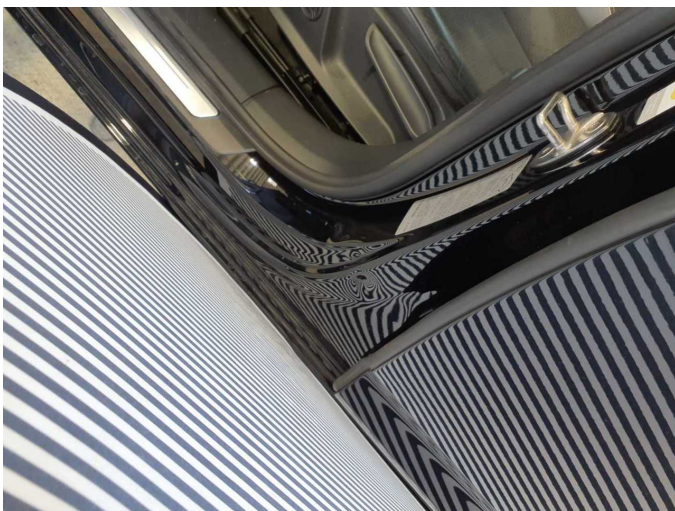
Damage 8: Seat - rear: Upholstery - Scratch(es) - Smart repair



Damage 8: Seat - rear: Upholstery - Scratch(es) - Smart repair



Damage 9: Body: B-pillar - left side - Deformed - Smart repair



Damage 9: Body: B-pillar - left side - Deformed - Smart repair



Damage 9: Body: B-pillar - left side - Deformed - Smart repair



Damage 10: Trim / covers: Boot lid - interior trim - Scratch(es) - Replace



Damage 10: Trim / covers: Boot lid - interior trim - Scratch(es) - Replace



Damage 10: Trim / covers: Boot lid - interior trim - Scratch(es) - Replace



Damage 11: Multimedia system: Screen (Hinten) - Scratch(es) - Loss in value



Damage 11: Multimedia system: Screen (Hinten) - Scratch(es) - Loss in value



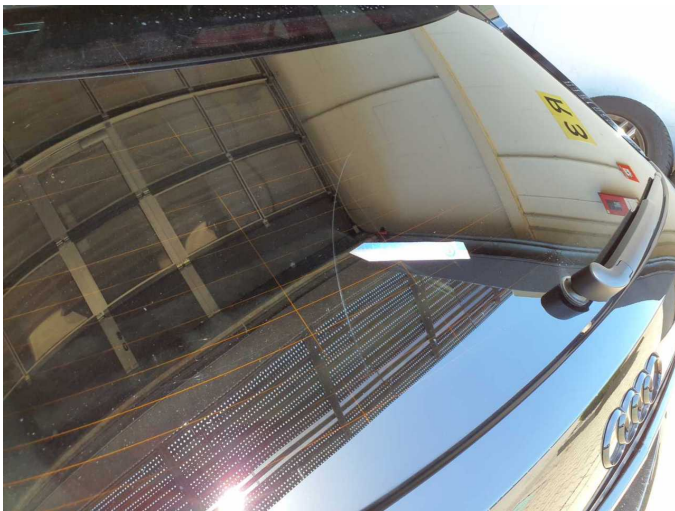
Damage 12: Roof: Roof - Scratch(es) - Paint



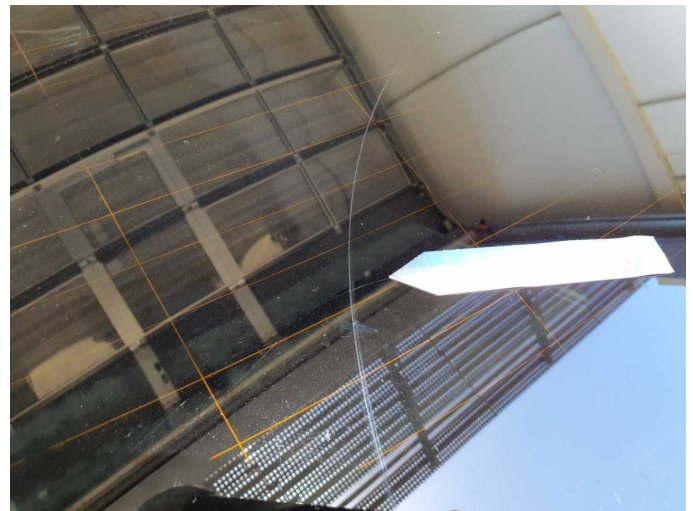
Damage 12: Roof: Roof - Scratch(es) - Paint



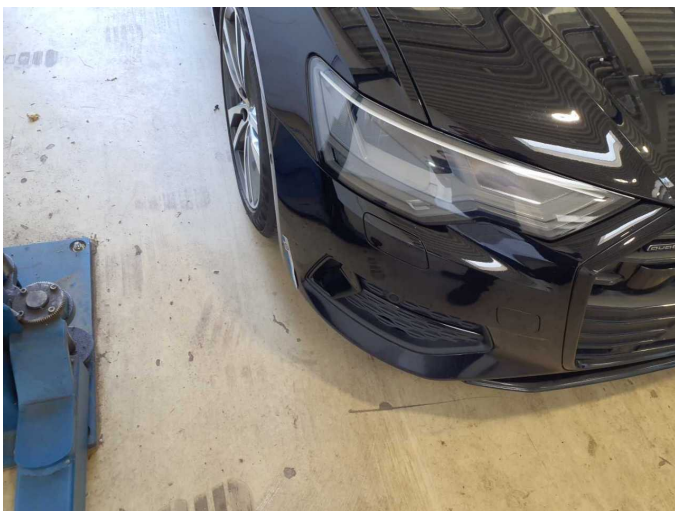
Damage 12: Roof: Roof - Scratch(es) - Paint



Damage 13: Vehicle glazing: Rear window - Scratch(es) - Replace



Damage 13: Vehicle glazing: Rear window - Scratch(es) - Replace



Damage 14: Front bumper: Front bumper (Und Steinschlag) - Scratch(es) - Paint



Damage 14: Front bumper: Front bumper (Und Steinschlag) - Scratch(es) - Paint



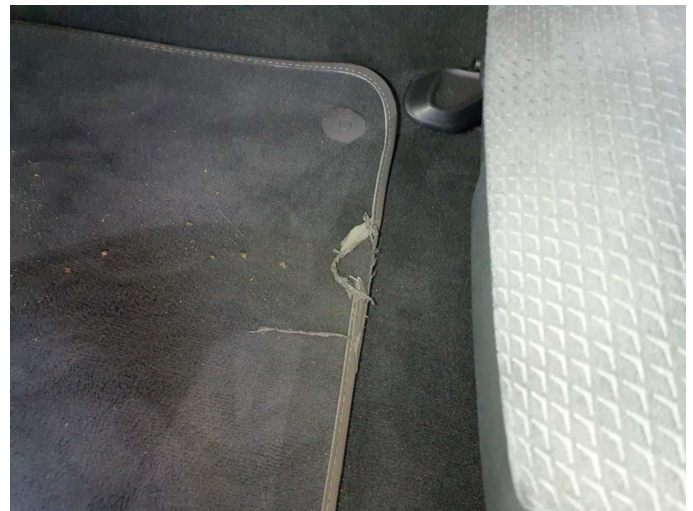
Damage 14: Front bumper: Front bumper (Und Steinschlag) - Scratch(es) - Paint



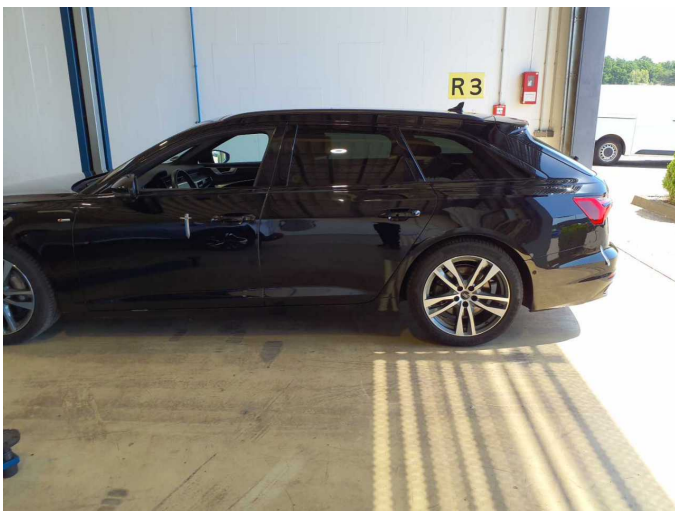
Damage 14: Front bumper: Front bumper (Und Steinschlag) - Scratch(es) - Paint



Wear and tear 7: Trim / covers: Floor mats - Worn - No deduction



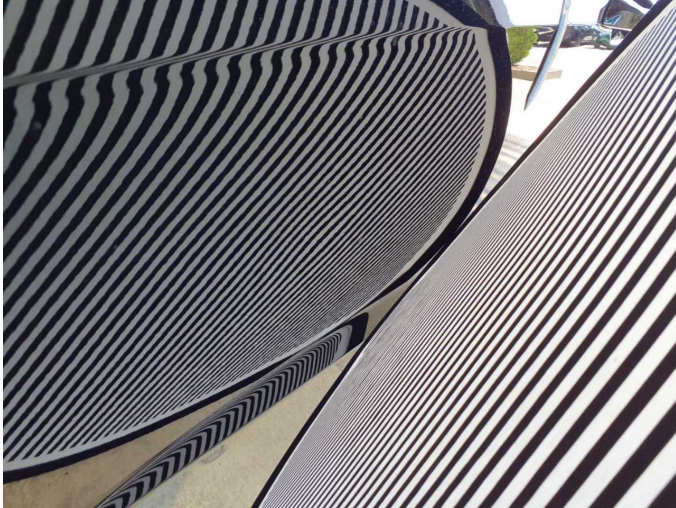
Wear and tear 7: Trim / covers: Floor mats - Worn - No deduction



Accident 1: Rear, Side - left



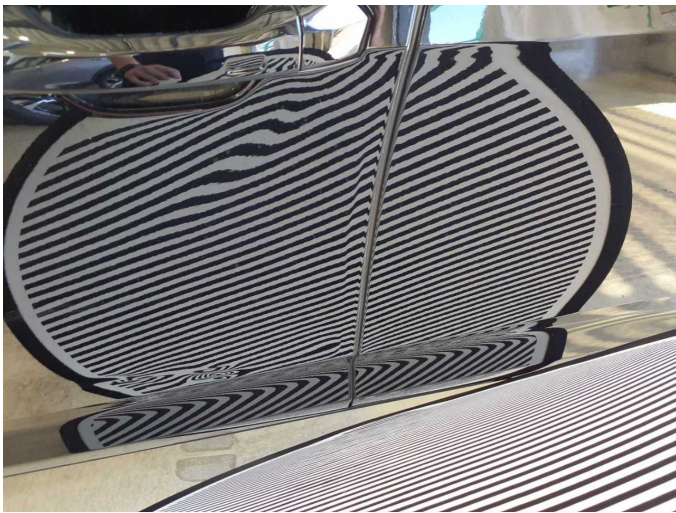
Accident 1: Rear, Side - left



Accident 1: Rear, Side - left



Accident 1: Rear, Side - left



Accident 1: Rear, Side - left



Accident 1: Rear, Side - left



Accident 1: Rear, Side - left



Accident 1: Rear, Side - left



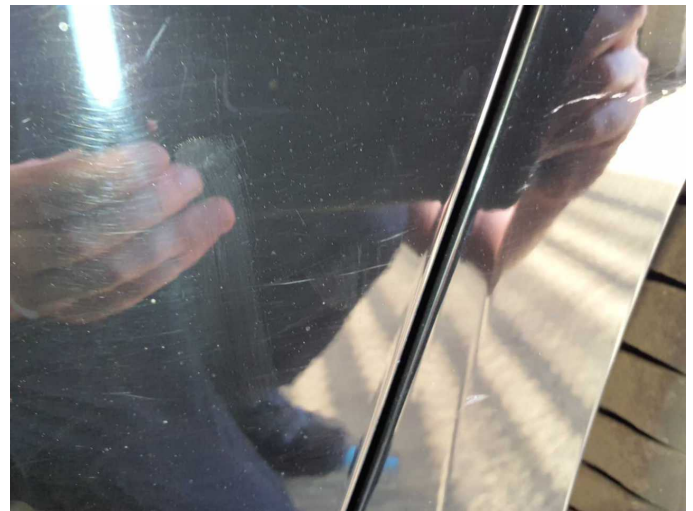
Accident 1: Rear, Side - left



Accident 1: Rear, Side - left



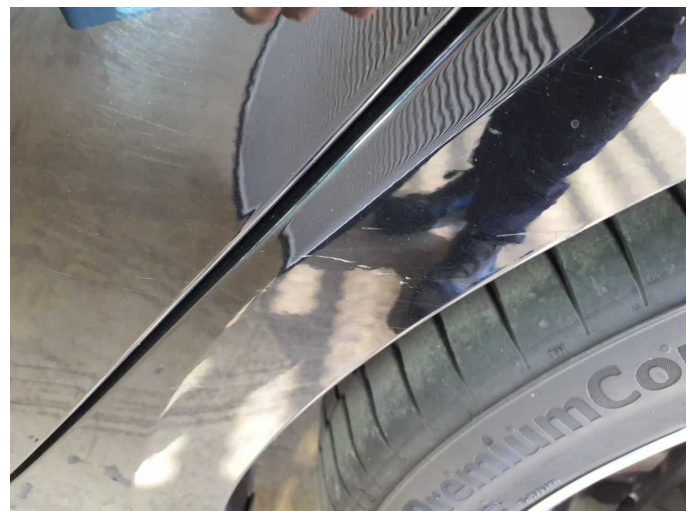
Accident 1: Rear, Side - left



Accident 1: Rear, Side - left



Accident 1: Rear, Side - left



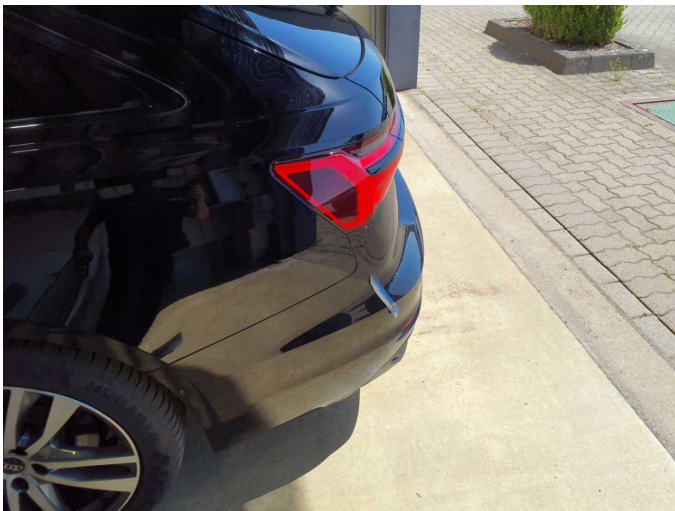
Accident 1: Rear, Side - left



Accident 1: Rear, Side - left



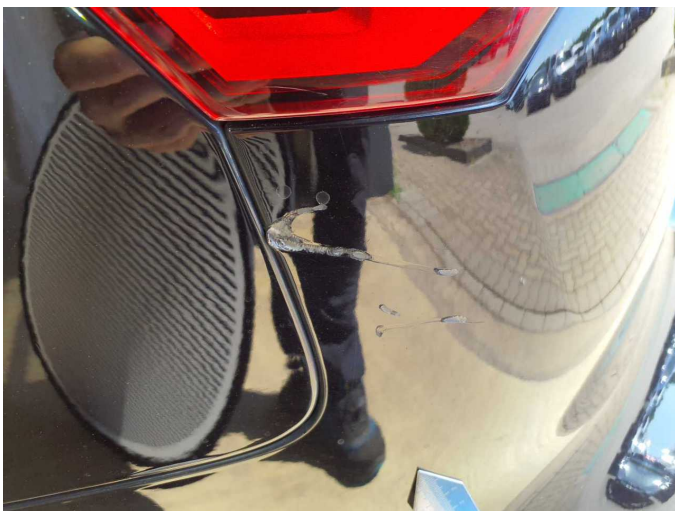
Accident 1: Rear, Side - left



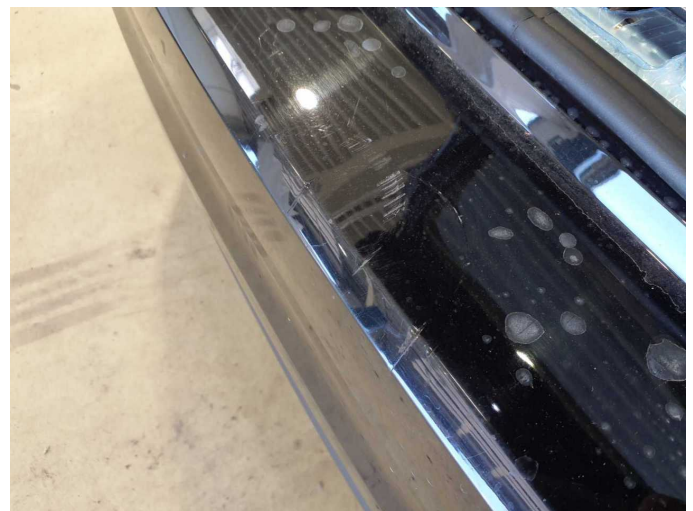
Accident 1: Rear, Side - left



Accident 1: Rear, Side - left



Accident 1: Rear, Side - left



Accident 1: Rear, Side - left