

Expertise

Protocol number: 46079959
Order No. / Reference: 26512085
Inspection date: 18 Jun 2026

Manufacturer: Volkswagen

Model: Passat Variant 1.4 TSI Plug-In-Hybrid DSG GTE

VIN: WVVZZZ3CZPE025023



Vehicle details

Manufacturer / Type / Model / Equipment

Volkswagen Passat Variant 1.4 TSI Plug-In-Hybrid DSG GTE

Vehicle Identification number WVVZZZ3CZPE025023

Mileage (Read) 93,583 km

First registration 9 Dec 2022

Number of holders 1

Power / Engine displacement 115 kw / 1,395 ccm

Fuel type / Cylinder Hybr.B/E ext.auf1 / 4

Gearbox / Number of gears Automatic / 6

Type of drive Front drive

Type of vehicle Station wagon

Colour / colour code Mangangrau-metallic (B7R)

Doors / Seats 5 / 5

Upholstery type Alcantara / Leather

Colour of upholstery Black



Vehicle details

Maintenance booklet / proof	digital proof / complete	Next maintenance in	11,400 km
Last service on / at	04/2026 at 89,938 km		
Key is / should be	2 / 2	FZG documents	ZB#2 (B) was available (copy), ZB#1 (S) was not available.
		Letter No.	GP876344
Previous damage / Accident	Detectable	Repainting	Detectable
Inspection conditions	sufficient	Lifting equipment / pit	No
Test drive	Not performed	Engine function test	Performed
Manufacturer key number/ type code number	0603 / BRZ 00122		
Emission standard	EURO6;WLTP;AP;PI/CI; M, N1 I	fine dust sticker	
Permitted total weight	2,270 kg	Empty weight	

Tyres

Mounted tyres				
#	Tyre size	Type of tyre	Manufacturer	Tread depth
1)	235/45 R18 94W	Summer tires (with run-flat tires) on Light alloy	Continental	3mm / 3mm
2)	235/45 R18 94W	Summer tires (with run-flat tires) on Light alloy	Continental	5mm / 5mm
Additional tyres				
#	Tyre size	Type of tyre	Manufacturer	Tread depth
1)	215/55 R17 94H	Winter tyres on Light alloy	Continental	5mm / 5mm
2)	215/55 R17 94H	Winter tyres on Light alloy	Continental	7mm / 7mm

Legend: Tread depth information for the left tire is listed first, for the right tire it is listed second on the axle in the direction of travel.

TÜV SÜD Auto Partner GmbH
Wiesenring 2
04159 Leipzig

Inspection location
Hartmann Fleet Professionals GmbH
Leerenstraße 25
29683 Bad Fallingbommel



Equipment



Standard equipment

- Airbag for driver and front passenger (airbag deactivation switch on the passenger side)
- Anti-lock braking system (ABS)
- Adaptive Cruise Control (ACC) "stop & go", including speed limiter
- Electrically adjustable and heated exterior mirrors, ambient lighting (automatically dimming on the driver's side)
- Chrome trim on the side windows
- black roof rails
- e-Sound (artificially generated engine noise to inform other road users about the approach of the e-vehicle)
- Entry/warning lights in LED technology in the front doors
- Automatic headlight control (with daytime running lights, "Leaving home" function and manual "Coming home" function)
- Pedestrian detection
- Transmission: 6-speed DSG (6-speed dual-clutch transmission DSG)
- Interior lights with delayed shut-off and dimming function (2 LED reading lights each at the front and rear)
- Cable for AC charging station (incl. standard mains charging cable for household socket)
- Rear headrests (3)
- Front headrests (safety-optimized, longitudinally and height-adjustable)
- Steering wheel: Multifunction sports steering wheel in leather, with paddle shifters (gearshift knob in leather)
- Multifunction display "Premium" with multi-color display (showing, among other things: - Outside temperature - Average consumption - Average speed - Trip distance - Trip time - Gear recommendation - Speed warning - Comfort - Current consumption - Range - Service - Time with extended display options, e.g.: - Digital speedometer - Digital oil temperature display - Lights & visibility - Language - Auxiliary heater - Winter tires)
- Mains charging cable for household socket
- Mesh partition
- Non-smoking version (storage compartment and 12V socket at the front)
- Emergency braking assistant "Front Assist" (for automatic distance control ACC up to 210 km/h)
- Emergency call service (no registration required, service is activated upon delivery)
- Upholstery: Fabric "Business" (seat center panels of the front seats and the outer rear seats in fabric "Weave")
- Proactive occupant protection system in conjunction with "Front Assist" (detects critical traffic situations with increased accident potential - prepares vehicle occupants and the vehicle for a possible accident by tightening the front, fastened seat belts and securing the driver and front passenger, and closing open windows and the sunroof except for a gap)
- Airbag, head airbag system for front and rear passengers (including front side airbags)
- App-Connect Wireless (Volkswagen offers three interfaces for connecting smartphones with numerous possibilities: - Apple CarPlay - Android Auto from Google - MirrorLink)
- Cup holders (2) front
- Hill start assist
- third brake light
- Headliner in Mistral Grey
- Tachometer
- Parking aid - warning signals for obstacles in the front and rear area
- Electronic parking brake including auto-hold function
- Remote release for luggage compartment lid
- Windscreen made of laminated safety glass, heat and sound insulating
- Adjustable luggage compartment floor
- Rear window heated
- rear window wiper
- Interior mirror automatically dimming
- ISOFIX mounting points (for attaching 2 child seats to the rear seats, also for i-Size child seats)
- Air conditioning system "Air Care Climatronic" with 3-zone temperature control and active combination filter
- LED taillights
- LED headlights with daytime running lights
- Headlight range control
- Front center armrest, height and length adjustable, with storage box (2 rear air vents with chrome slats)
- Fatigue detection (detects signs of possible driver fatigue based on characteristic steering behavior, time of day and driving duration and issues a visual and audible warning)
- Navigation system "Discover Media" incl. "Streaming & Internet" (4x20 watts, user interface with proximity sensor, dual tuner with phase diversity, vehicle menu, speed, volume adjustment, map, 2D display, tone control, 3-way TFT display with touchscreen operation, navigation "Discover Media" incl. "Streaming & Internet", MP3 radio, telephone contact addresses for navigation, telephone interface, 2 USB ports also for iPod/iPhone, traffic sign recognition "VW Media Control", We Connect Plus, 3 years, incl. We Connect route guidance, dynamic RDS, TMC tuner)
- Package: Light and Sight Package "Plus" (LED lights in the front footwell - Electrically adjustable and heated exterior mirrors, automatically dimming on the driver's side - Entry/warning lights in the front doors, in LED technology - Automatic headlight control, with daytime running lights, "Leaving Home" function and manual "Coming Home" function - Interior light with delayed shut-off and dimming function, 2 LED reading lights each in the front and rear - Automatically dimming interior mirror - Illuminated vanity mirrors - Extendable sun visors - Rain sensor)
- Tire pressure monitoring system (passive)



- Radio accessories: Digital radio reception DAB+ (reception of digitally broadcast radio stations and traffic information in addition to the analog station offering - reception depends on the local availability of digital networks - expanded range of radio programs - improved reception performance)
 - Keyless start system without safe locking
 - Power steering (electromechanical, speed-dependent)
 - Seats: Comfort seats in the front
 - Seats: Lumbar support in the front (driver's side electrically adjustable)
 - Lane Assist (warns with a corrective steering intervention if the vehicle unintentionally leaves the lane)
 - 12V power outlet on the rear center console (and in the luggage compartment)
 - Textile floor mats (front and rear)
 - Warning tone and light for unfastened seat belts front and rear
- Wheels: 4 "Montpellier" 7 J x 17 alloy wheels in black, polished surface (low rolling resistance - AirStop tires 215/55 R 17 - wheel locks with enhanced theft protection)
 - Rear bench seat undivided, backrest asymmetrically split and foldable, with center armrest (and pass-through option)
 - Seat belts: Three-point automatic seat belt (seat belt for middle rear seat - seat belts for outer rear seats - front seat belts with height adjustment and belt tensioner)
 - Seats: Front seats height-adjustable (ergoComfort seat on the driver's side - with electric backrest adjustment)
 - Start-stop system (with brake energy recuperation)
 - Bumpers in body color
 - Telephone interface
 - First aid kit, warning triangle and high-visibility vest
 - Electronic immobilizer
 - Central locking with remote control



Extra equipment

- Towbar, foldable (with electric release)
- Roof rails, silver anodized
- Chassis: Adaptive chassis control DCC including driving profile selection
- Steering wheel: Multifunction sports steering wheel in leather, heated, with paddle shifters
- Package: "Business Premium" package incl. navigation (from Business trim level) (2 USB-C ports in the front, USB-C charging socket in the rear, 230V socket, App-Connect incl. wireless, Apple CarPlay, Android Auto, "Travel Assist" driver assistance system and "Lane Assist" lane keeping assist system, Air Care Climatronic with 3-zone temperature control, active combination filter and rear controls, lumbar support in the front, electric on the driver's side, massage function on the driver's side, "Rear View" reversing camera, heated windshield washer nozzles, Comfort telephone interface, inductive charging function, heated front seats)
- Package: "Design and Comfort" in conjunction with "Business Premium" (silver anodized roof rails - stainless steel door sill trims front and rear - automatically heated windshield washer nozzles in the front - "ArtVelours" seat center panels of the front seats and outer rear seats, - inner side bolsters in "Vienna" leather - sport comfort seats in the front - heated front seats)
- Package: Ambient lighting "Plus" (multicoloured ambient lighting - LED entry/warning lights in all doors - interior lights with switch-off delay and dimming function, 2 LED reading lights each in the front and rear)
- Package: Winter version additionally includes heated outer rear seats
- Wheels: 4 light alloy wheels 8 J x 18 "Liverpool" (AirStop tires 235/45 R 18, optimized for rolling resistance - wheel locks with enhanced theft protection - rear disc brakes, brake calipers in blue (only for GTE))
- Seats: Heated front seats and outer rear seats
- Voice control
- Laminated safety glass, noise-insulating for front and side windows in conjunction with R-Line Sport package for adaptive chassis control (DCC) (including tinted rear side windows and rear window)
- Roof headliner in titanium black
- Anti-theft alarm system
- Paint finish: Metallic
- Paint finish: Special metallic paint
- Navigation system "Discover Pro" incl. "Streaming & Internet" (4x20 Watt App-Con. Wireless Digital Cockpit. Operation with proximity sensor. Dual tuner with phase differentiation. DAB. Vehicle menu. Speed. Volume adjustment. Gestures. 32 GB SSD hard drive. Map 2D display. Tone control. 3-way TFT display with touchscreen. MP3. Navigation for Europe. Voice control. Telephone contact. Address. Telephone interface. "Comfort" with inductive charging. 2 USB iPod/iPhone. Traffic sign recognition. "We Connect Plus" incl. "We Connect". Dynamic route guidance. RDS. TMC tuner. Mobile key pre-activation, vehicle via smartphone.)
- Package: "Design and Comfort" (Silver anodized roof rails - Stainless steel front and rear door sill trims - Automatically heated front windshield washer nozzles - "ArtVelours" seat center panels for front seats and outer rear seats, leather "Vienna" side bolsters - Sport comfort seats in front - Heated front seats)
- Package: "Easy Open & Close" package including safe locking (extendable and removable luggage compartment cover with electric opening - tailgate with sensor-controlled opening and closing, with remote unlocking - keyless locking and starting system "Keyless Access" with safe locking)
- Package: R-Line Sport package for DCC (progressive steering - rear side windows and rear window darkened, 65% light-absorbing - electronic differential lock XDS)
- Wheels: Tire Mobility Set omitted
- Keyless locking and starting system "Keyless Access" with safe locking mechanism
- Seats: ergoComfort seat with 14-way electric adjustment, memory and massage on driver's side in conjunction with Business Package (electrically folding exterior mirrors, auto-dimming on driver's side, ambient lighting and memory - electrically adjustable lumbar support in front, massage function on driver's side - electrically adjustable front seats, ergoComfort seat on driver's side, with memory function and comfort entry)

Brief expert findings

Documents submitted	At the time of the inspection, the vehicle registration certificate Part 2 (title) was available, but the vehicle registration certificate Part 1 (document) was not. (Copy)
VIN comparison	The vehicle identification number (VIN) was read from the vehicle and its conformity with the submitted documents was confirmed by the undersigned during the inspection.
Inspection	The inspection conditions were sufficient for the assessment of the vehicle. No lifting equipment or pit was available for inspecting the vehicle. Therefore, inspection of the vehicle's underside was only possible to a limited extent.
Test drive	No test drive/shunting maneuver was carried out during the inspection of the vehicle.
Engine function test	An engine test run was performed.



Value reducing factors

No.	Component group	Description
1	Wing mirror - right side	Cap - Scratch(es) - Smart repair
2	Door - front left side	Door handle - outside - Scratch(es) - Smart repair
3	Sill - right side	Sill - dent(s) - Smooth repair work
4	Rear bumper	Rear bumper - Scratch(es) - Smart repair
5	Wheel / tyres	Tyre - rear right side (nicht fahrbereit) - Broken / torn - Replace
6	Wheel / tyres	Tyre - front right side (nicht fahrbereit) - Damaged - Replace
7	Boot lid / rear door	Boot lid - dent(s) - Smooth repair work
8	Wheel / tyres	Alloy rim - rear left side - Scratch(es) - Loss in value
9	Wheel / tyres	Alloy rim - rear right side - Scratch(es) - Loss in value
10	Wheel / tyres	Alloy rim - front right side - Scratch(es) - Loss in value
11	Side panel - rear left side	Side panel - Scratch(es) - Paint
12	Door - front left side	Door - Scratch(es) - Paint
13	Front bumper	Front bumper (Orangenhaut) - Unprofessionally repaired - Repair and paint
14	Bonnet	Bonnet - Dent / paintcoat damage - Repair and paint
15	Roof	Roof - Corrosion - Repair and paint
16	Vehicle glazing	Windscreen - Broken / torn - repair according to calculation

Wear and tear

No.	Component group	Description
1	Seat - front	Seat cover - left side - Scratch(es) - No deduction
2	Side panel - rear right side	Sill - dent(s) - No deduction
3	Mudguard - left side	Mudguard - left side - dent(s) - No deduction
4	Roof	Roof rail - right side - dent(s) - No deduction

The vehicle shows signs of wear and tear commensurate with its age and use.

Previous damages

No.	Previous damage	Extent of damage (Net)
1	Side right, Provided by user / customer, from 30 Dec 2024	2.372,66 €
2	Side right, Provided by user / customer, from 30 Dec 2024	3.989,28 €

Repainting

No.	Repainting
1	Mudguard - right side, Professionally carried out, Invoice of repair done Non-existent
2	Bumper front, Unprofessionally carried out

Paint coat thickness measurement

Mudguard - right side 213 µm |



Order/Scope of Order

An order was placed to prepare a sales report for the described vehicle. This report includes the following:

- Description of key vehicle information
- Documentation of equipment features
(Delivery by third-party service providers)
- Documentation of damage, defects, missing parts
- Documentation of prior damage, unrepaired prior damage, repainting
- A brief visual or functional inspection of the equipment details, if possible.
(Functional testing of driver assistance systems is not included in the scope of services!)
- a photographic documentation of the vehicle

Basis for the order

This product is based on the guidelines for vehicle returns and valuations published by Alphabet Fleet GmbH. The expert makes the specific findings in each individual case objectively, within the framework of the prescribed standards, based on their own expertise.

The vehicle inspection takes place in a fully assembled, unassembled state.

Damage or defects that can only be detected during disassembly/diagnostic work or through further investigation remain within the realm of prognostic risk. An increased risk exists due to concealed defects caused by fraudulent misrepresentation and which were not identifiable by the expert.

Damage or defects resulting from normal use or wear and tear of the vehicle will be accepted in accordance with the applicable standard.

There was no explicit identification or monetary consideration of the expected features within the product.

Features which, in their nature and extent, slightly exceed normal use but do not constitute unacceptable damage, will be documented and indicated as signs of wear, if applicable.

Damage or defects that, according to the applicable standard, can no longer be attributed to normal use or wear and tear are listed under "Value Reducing Factors" in the product description.

Depending on the product specification, a monetary ID can be provided. If this takes place, the costs can be 100% or pro rata depending on the vehicle's age and mileage.

Previous damages

According to available information previous damages were repaired at the vehicle. Traces of repairs, which allow conclusions about the area of repair, were not recognizable during the inspection.



Figure 1: Diagonal front (left)



Figure 2: Diagonal front (right)



Figure 3: Diagonal rear (left)



Figure 4: Diagonal rear (right)



Figure 5: Interior - front



Figure 6: Interior - rear



Figure 7: Instrument cluster



Figure 8: Instrument panel



Figure 9: Interior 360° view



Figure 10: Cargo area

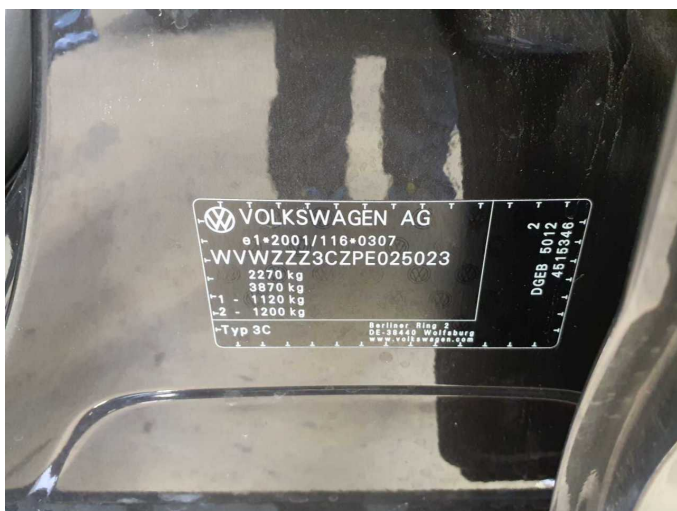


Figure 11: VIN



Figure 12: Mounted tyres



Figure 13: Documents



Figure 14: Additional tyres



Figure 15: Additional tyres



Figure 16: Navigation



Figure 17: Misc.



Figure 18: Misc.



Figure 19: Misc.



Figure 20: Misc.



Figure 21: Misc.

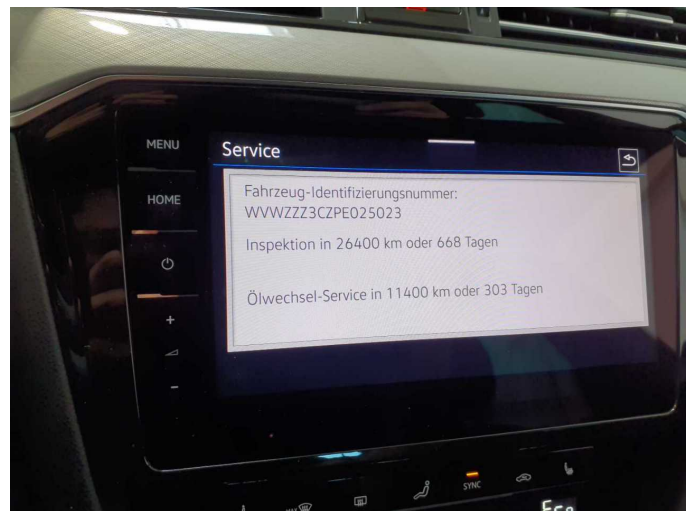


Figure 22: Misc.

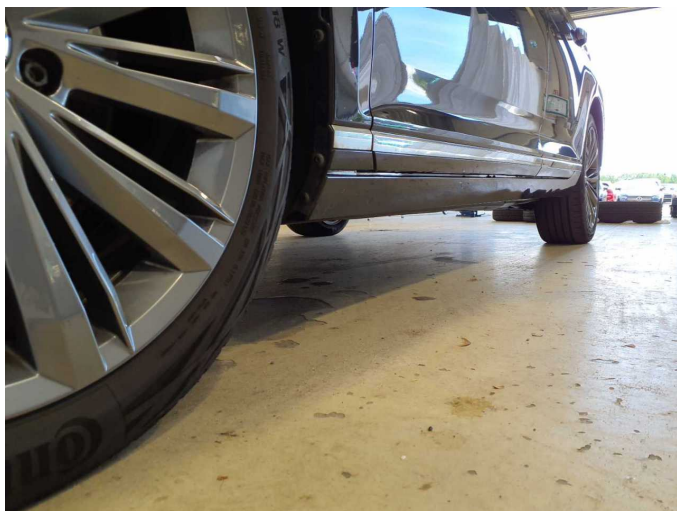


Figure 23: Misc.



Figure 24: Misc.



Figure 25: Misc.



Figure 26: Misc.

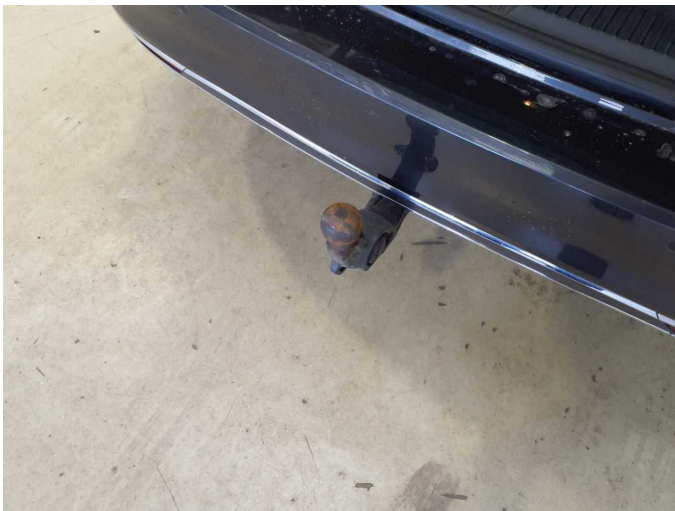


Figure 27: Misc.



Figure 28: Misc.



Figure 29: Misc.



Figure 30: Misc.



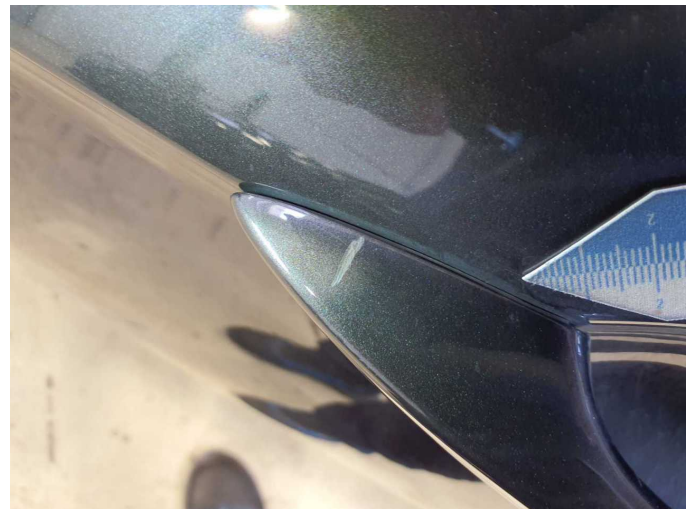
Damage 1: Wing mirror - right side: Cap - Scratch(es) - Smart repair



Damage 1: Wing mirror - right side: Cap - Scratch(es) - Smart repair



Damage 2: Door - front left side: Door handle - outside - Scratch(es) - Smart repair



Damage 2: Door - front left side: Door handle - outside - Scratch(es) - Smart repair



Damage 3: Sill - right side: Sill - dent(s) - Smooth repair work



Damage 3: Sill - right side: Sill - dent(s) - Smooth repair work



Damage 4: Rear bumper: Rear bumper - Scratch(es) - Smart repair



Damage 4: Rear bumper: Rear bumper - Scratch(es) - Smart repair



Damage 5: Wheel / tyres: Tyre - rear right side (nicht fahrbereit) - Broken / torn - Replace



Damage 5: Wheel / tyres: Tyre - rear right side (nicht fahrbereit) - Broken / torn - Replace



Damage 6: Wheel / tyres: Tyre - front right side (nicht fahrbereit) - Damaged - Replace



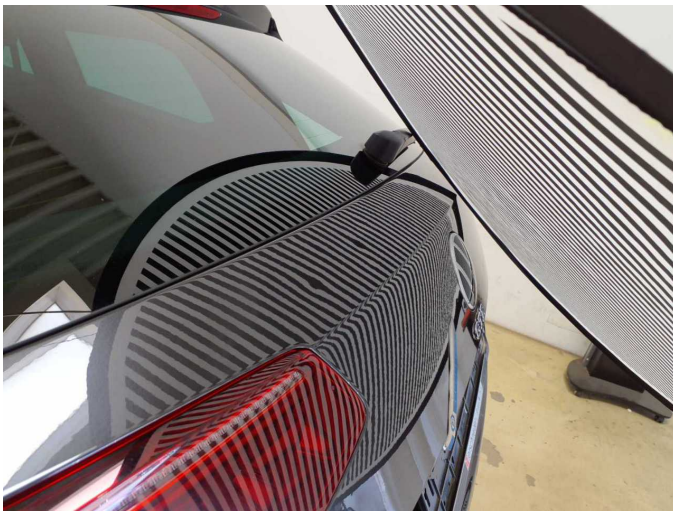
Damage 6: Wheel / tyres: Tyre - front right side (nicht fahrbereit) - Damaged - Replace



Damage 7: Boot lid / rear door: Boot lid - dent(s) - Smooth repair work



Damage 7: Boot lid / rear door: Boot lid - dent(s) - Smooth repair work



Damage 7: Boot lid / rear door: Boot lid - dent(s) - Smooth repair work



Damage 7: Boot lid / rear door: Boot lid - dent(s) - Smooth repair work



Damage 8: Wheel / tyres: Alloy rim - rear left side - Scratch(es) - Loss in value



Damage 8: Wheel / tyres: Alloy rim - rear left side - Scratch(es) - Loss in value



Damage 8: Wheel / tyres: Alloy rim - rear left side - Scratch(es) - Loss in value



Damage 9: Wheel / tyres: Alloy rim - rear right side - Scratch(es) - Loss in value



Damage 9: Wheel / tyres: Alloy rim - rear right side - Scratch(es) - Loss in value



Damage 10: Wheel / tyres: Alloy rim - front right side - Scratch(es) - Loss in value



Damage 10: Wheel / tyres: Alloy rim - front right side - Scratch(es) - Loss in value



Damage 10: Wheel / tyres: Alloy rim - front right side - Scratch(es) - Loss in value



Damage 11: Side panel - rear left side: Side panel - Scratch(es) - Paint



Damage 11: Side panel - rear left side: Side panel - Scratch(es) - Paint



Damage 12: Door - front left side: Door - Scratch(es) - Paint



Damage 12: Door - front left side: Door - Scratch(es) - Paint



Damage 13: Front bumper: Front bumper (Orangenhaut) - Unprofessionally repaired - Repair and paint



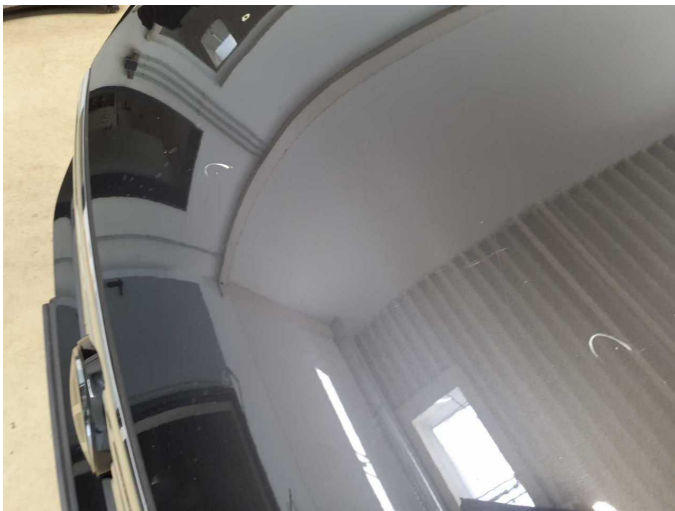
Damage 13: Front bumper: Front bumper (Orangenhaut) - Unprofessionally repaired - Repair and paint



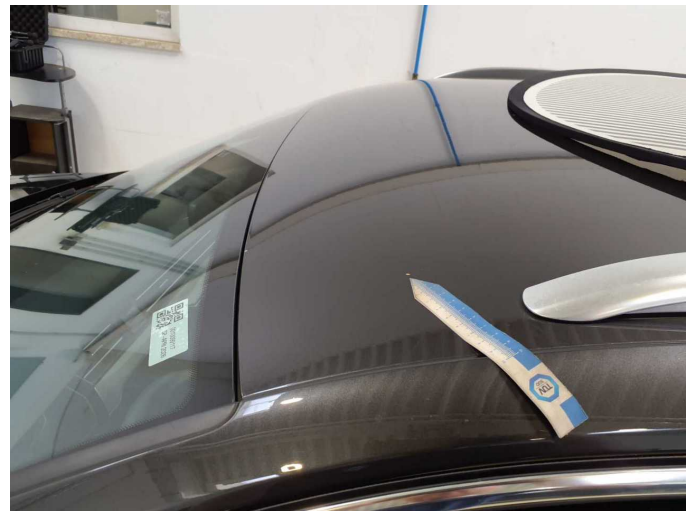
Damage 14: Bonnet: Bonnet - Dent / paintcoat damage - Repair and paint



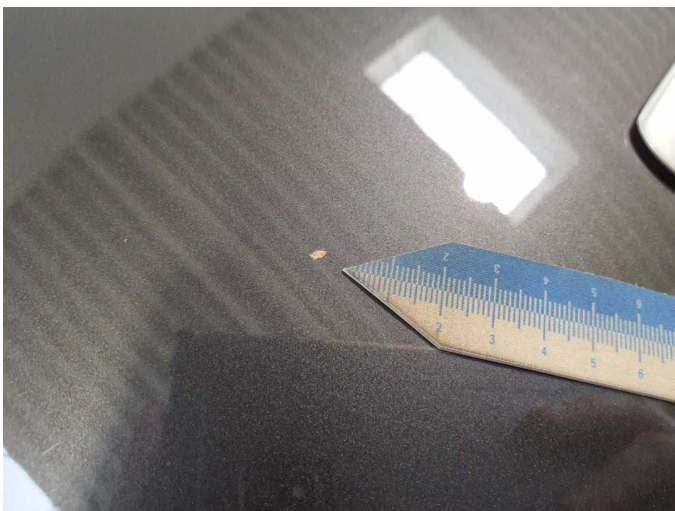
Damage 14: Bonnet: Bonnet - Dent / paintcoat damage - Repair and paint



Damage 14: Bonnet: Bonnet - Dent / paintcoat damage - Repair and paint



Damage 15: Roof: Roof - Corrosion - Repair and paint



Damage 15: Roof: Roof - Corrosion - Repair and paint



Damage 15: Roof: Roof - Corrosion - Repair and paint



Damage 16: Vehicle glazing: Windscreen - Broken / torn - repair according to calculation



Damage 16: Vehicle glazing: Windscreen - Broken / torn - repair according to calculation



Repainting 1: Mudguard - right side



Repainting 1: Mudguard - right side