



VOLKSWAGEN GOLF: GG-781-LX

Vinnumber:	WVWZZZCDZNW015966	Versionname:	VOLKSWAGEN GOLF 2.0 TDI SCR 115 BVM6 Life Busi
First Registrationdate:	20/05/2022	Fiscalpower:	VP [5P] bvm 6-11SCH-6cv (bi-corps)
Expertise Mileage:	184868	Power Kw:	85
Bodytype:	Berline	Body colour:	Grey
Gearbox:	MAN 6 VIT	Paint type:	Metalic
Transmission:	Front	Interior colour:	Black
Fueltype:	Diesel	Type of rims (mounted):	Aluminium
Engine functioning:	Yes	Dashboard color:	Black
Battery functioning:	Yes		
Vehicle running:	Yes		
Number of doors:	5		
Number of seats:	5		
Number head rests:	5		
Type of rims (mounted):	Aluminium		
Category:	Passenger Car		

Options

Number of keys total	2	Radio	
Number keys remote	2	Central consol F	
GPS big screen color		Luggage cover	
Windows electric F		Headlights Xenon/LED/Laser	
Windows electric R		Front parking sensors	
Cruise Control		Rear parking sensors	
Steering wheel multifunctional		Rear view camera	
Steering wheel leather		Seat cover lining	Lining Other
Type of climate control	Autom climate control		

Tyres

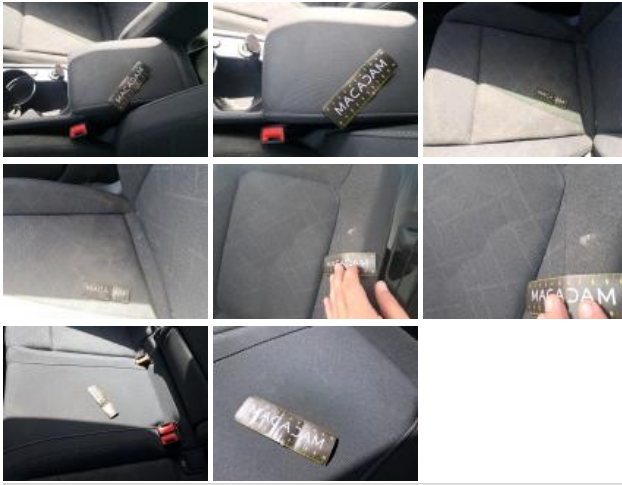
205/55/16/91 V				
Summer tyres:	Fr.L.	Goodyear: 75%	Fr.R.	Goodyear: 60%
	Re.L.	Hankook: 40%	Re.R.	Hankook: 45%
Tyre profile depth FL				3.4
Tyre profile depth FR				4.3
Tyre profile depth RL				5.7
Tyre profile depth RR				5.2
Tyre size FL				205/55 R 16 91 V
Tyre size FR				205/55 R 16 91 V
Tyre size RL				205/55 R 16 91 V
Tyre size RR				205/55 R 16 91 V
Tyre type FL				Summer
Tyre type FR				Summer
Tyre type RL				Summer
Tyre type RR				Summer
Tyre make FL				259
Tyre make FR				259
Tyre make RL				260
Tyre make RR				260

Assistance equipment

Emergency spare wheel	Yes	Jack	Yes
Remote ignition key (no insert), Worn, Repair/replace (lump sum)			



Interior, Stain, Cleaning



Seat cover RL, Burned, Replace



Glove compartment lid, Scratch(es), Repair/replace (lump sum)



Tyre FL, Out of tolerance, Replace



Alloy rim FL, Scratch(es), Repair/replace (lump sum)



Alloy rim RR, Scratch(es), Repair/replace (lump sum)



Alloy rim FR, Scratch(es), Repair/replace (lump sum)



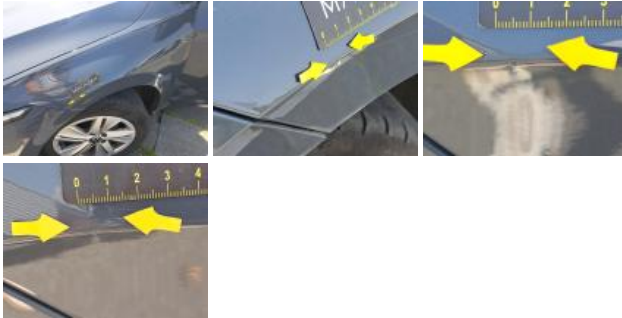
Door RL, Dent(s), Repair and paint (complete)



Door FL, Scratch(es), Paint



Wing FL, Dent(s) and scratch(es), Repair and paint (complete)



Bumper F, Scratch(es), Paint



Bonnet, Dent(s) and scratch(es), Repair and paint (complete)



Wing RR, Dent(s), Repair and paint (complete)



Wing FR, Dent(s) and scratch(es), Repair and paint (complete)



Outer sill R, Dent(s), Repair and paint (complete)



Outside rear-view mirror housing R, Scratch(es), Acceptable



Bumper R, Scratch(es), Paint



Tailgate / Boot, Scratch(es), Paint



Historique Maintenance

Immatriculation: **GG-781-LX**Date de 1ère immatriculation: **20/05/2022**Modèle: **Volkswagen GOLF 2.0 TDI SCR 115 BVM6 Life Busi VP [5P] bvm 6-115CH-6cv (bi-corps)**

Date	Kilométrage	Fournisseur	Descriptif
30/04/2026	178.663	SELECTION AUTO ST BRIEUC	REVISION ET CLIM ET AIR ET CARBURANT
27/02/2026	171.353	SELECTION AUTO	CAPTEURS DIVERS RPLT
22/09/2025	148.720	SELECTION AUTO	DISQUES PLAQUETTES AV RPLT
	0		REVISION
	0		ADBLUE
	0		DISQUES PLAQUETTES AR RPLT
04/04/2025	125.321	FLEET SOLUTIONS FRANCE	REPLACEMENT PNEUS ETE
19/02/2025	118.887	SELECTION AUTO	ADBLUE
	0		REVISION
	0		LIQUIDE DE FREIN
	0		BALAI ESSUIE GLACE AR
	0		BALAI ESSUIE GLACE AV
10/12/2024	110.155	FLEET SOLUTIONS FRANCE	REPLACEMENT PNEUS ETE
01/10/2024	102.415	SELECTION AUTO	DIAG
	0		DIVERS ELEC
03/06/2024	88.415	SELECTION AUTO	PLAQUETTES AV RPLT
	0		PLAQUETTES AR RPLT
	0		PILE DE CLE RPLT
	0		LIQUIDE DE FREIN
	0		REVISION
	0		ADBLUE
20/11/2023	58.467	NORAUTO SAS (PRODUIT SPE)	REPARATION DE ROUE
	0		REPLACEMENT PNEUS ETE
30/10/2023	57.700	VGRF GRAND OUEST	LIQUIDE LAVE GLACE
	0		ADBLUE
	0		BALAI ESSUIE GLACE AR
	0		BALAI ESSUIE GLACE AV
	0		REVISION ET CLIM
	0		RECYCLAGE
22/03/2023	30.730	VGRF GRAND OUEST	REVISION
	0		RECYCLAGE
26/01/2023	24.734	VGRF GRAND OUEST	PILE DE CLE RPLT

Historique Maintenance

Immatriculation: **GG-781-LX**

Date de 1ère immatriculation: **20/05/2022**

Modèle: **Volkswagen GOLF 2.0 TDI SCR 115 BVM6 Life Busi VP [5P] bvm 6-115CH-6cv (bi-corps)**

Date	Kilométrage	Fournisseur	Descriptif
	0		LIQUIDE LAVE GLACE
	0		APPOINT D HUILE