

## Expertise

Protocol number: 45675607  
Order No. / Reference: 26310669  
Inspection date: 29 May 2026

Manufacturer: Ford

Model: Focus Turnier 1.0 EcoBoost Hybrid TITANIUM EDITION

VIN: WF0PXXGCHPSJ80638



### Vehicle details

#### Manufacturer / Type / Model / Equipment

Ford Focus Turnier 1.0 EcoBoost Hybrid TITANIUM EDITION

**Vehicle Identification number** WF0PXXGCHPSJ80638

**Mileage (Read)** 3,677 km

**First registration** 19 Mar 2025

**Number of holders** 1

**Power / Engine displacement** 92 kw / 999 ccm

**Fuel type / Cylinder** Hybrid Petrol / E / 3

**Gearbox / Number of gears** Manual / 6

**Type of drive** Front drive

**Type of vehicle** Station wagon

**Colour / colour code** Agate Black Metallic

**Doors / Seats** 5 / 5

**Upholstery type** Cloth

**Colour of upholstery** Anthracite-Grey

**Vehicle with smoke odor** no



**Vehicle details**

<b>Maintenance booklet / proof</b>	Available / complete	<b>Next maintenance in</b>	48 %
<b>Key is / should be</b>	2 / 2	<b>FZG documents</b>	ZB#2 (B) was available (copy), ZB#1 (S) was not available.
		<b>Letter No.</b>	HH809716
<b>Previous damage / Accident</b>	None detectable	<b>Repainting</b>	None detectable
<b>Inspection conditions</b>	sufficient	<b>Lifting equipment / pit</b>	yes
<b>Test drive</b>	Not performed	<b>Engine function test</b>	Performed
<b>Manufacturer key number/ type code number</b>	8566 / BUC 00155		
<b>Emission standard</b>	EURO6;WLTP;EA;PI/CI;M, N1, N2	<b>fine dust sticker</b>	
<b>Permitted total weight</b>	1,970 kg	<b>Empty weight</b>	

**Tyres**

**Mounted tyres**

#	Tyre size	Type of tyre	Manufacturer	Tread depth
1)	205/60 R16 96V	Winter tyres on Steel rim with wheel cover	Goodyear	7mm / 7mm
2)	205/60 R16 96V	Winter tyres on Steel rim with wheel cover	Goodyear	7mm / 7mm

**Replacement**

Typ	Tyre size	Type of tyre	Manufacturer	Tread depth
	Tirefit	Expiration date 12/2028		

**Legend: Tread depth information for the left tire is listed first, for the right tire it is listed second on the axle in the direction of travel.**

TÜV SÜD Auto Partner GmbH  
Wiesenring 2  
04159 Leipzig

Inspection location  
Mosolf SE & Co.KG  
Faberweg 25  
73230 Kirchheim unter Teck



## Equipment



## Standard equipment

- Airbag: Passenger airbag deactivation
- Exterior mirrors painted in body color, electrically adjustable, heated and foldable (with integrated turn signals)
- Hill start assist
- Roof rails, aluminum
- Tachometer
- eCall
- Driver information system with on-board computer, color (10.7 cm screen diagonal)
- Electric front and rear windows (with all-around closing function)
- Ford ECO-Coach (signals environmentally friendly driving style)
- FordPass Connect including live traffic information
- Luggage compartment cover
- Cruise control
- Transmission: 6-speed manual transmission
- Illuminated glove compartment
- Rear window wiper
- Interior mirror, automatically dimming
- Intelligent safety system (front airbag for driver and front passenger - front and rear head and shoulder airbags - side airbag for driver and front passenger - seat belt tensioners and force limiters in the front and on the outer seats of the 2nd row - 3-point seat belts on all seats, height-adjustable in the front - safety pedal assembly)
- Paint finish: Metallic
- LED headlights (LED low beam - LED high beam - LED daytime running lights incl. integrated LED turn signals at the front - LED cornering lights, static, incl. integrated LED fog light function and maneuvering light)
- Make-up mirrors in driver and passenger sun visors
- Front center console "Premium" (sliding armrest - cup holder incl. cover - storage compartments - 12-volt and USB connection)
- Otto particulate filter
- Package: Winter (heated windscreen - heated steering wheel - individually and variably heated front seats)
- Front and rear parking pilot system
- Upholstery: Cloth
- Post-Collision Assist (In the event of a severe collision, which would also deploy the airbag and in which the driver might be incapacitated, this system initiates the braking process. This reduces the risk of colliding with further obstacles and road users after the initial collision. The driver can intervene and operate the accelerator or brake pedal manually throughout the entire process.)
- Tire repair kit (for use at a maximum speed of 80 km/h)
- Rear view camera
- Windscreen wipers with rain sensor (sensitivity adjustable)
- Selective driving mode switch (including 3 selectable driving modes: Normal, Sport and Eco)
- Seats: Passenger seat, 2-way adjustable
- Seats: Rear seat backrest (foldable, 60:40 split)
- Seats: Front sports seats with enhanced lateral support
- Anti-lock braking system (ABS) with electronic brake force distribution (EBD)
- Tires: 6.5 J x 16 design wheels (4) with 205/60 R16 tires (in 10-spoke design, in black-silver)
- Fabric headliner
- Roof spoiler painted in car color
- Third brake light
- Electronic Stability Program (ESP) (with Emergency Brake Assist (EBA) and Traction Control System (TCS))
- Lane keeping assist including lane keeping assist
- Electric parking brake with auto-hold function
- Ford Easy Fuel (comfortable fuel filler cap and misfuelling protection)
- Ford Power Start function (keyless start)
- Heated windshield
- Speed limiter (Intelligent speed limiter with speed limit display)
- Rubber mats (wet area with standard rubber mat)
- Back window, heater
- Interior lighting with LED technology (front and rear and map reading lights at the front)
- Isofix mounting (including top tether anchor points on the outer seats of the 2nd row)
- Air conditioning with automatic temperature control (separately adjustable for driver and passenger side (2-zone automatic climate control))
- Headrests: 2 front and 3 rear, height adjustable
- LED taillights
- Heated steering wheel
- Steering wheel: 3-spoke design steering wheel (in Sensico leather look)
- Steering column, adjustable (adjustable in height and reach)
- MyKey key system (individually programmable second key)
- Fatigue warning
- Navigation: Ford SYNC 4 including Ford navigation system with AppLink, 13.2" touchscreen and DAB/DAB+ (6 speakers - Amazon Alexa built-in voice assistant - Android Auto and Apple CarPlay - Steering wheel controls - Digital user manual - Bluetooth hands-free calling and audio streaming - USB ports - Voice control for audio and phone - Ford Power-Up software updates - Intelligent route suggestions - Customizable user profiles - Radio player - Audible and visual route guidance, dynamic and cloud-based navigation with advanced traffic information system, lane guidance and road map for Europe)
- Pre-Collision Assist (Forward Alert system with pedestrian and bicycle detection)
- Tire Pressure Monitoring System (TPMS)
- Gear knob, Sensico in leather look
- Headlight assistant with day/night sensor
- Electro-mechanical speed-dependent power steering (EPAS - Electric Power Assisted Steering)



- Start-stop system
- Carpet floor mats in the front
- Lashing eyes in the luggage compartment
- Warning system for unfastened seat belts for the 1st and 2nd rows of seats

- Seats: Driver's seat height adjustable (with manually adjustable lumbar support)
- Seats: Front seats can be heated individually and variably.
- 12-volt socket
- Trim above the side window, black (trim below the side window, chrome trim)
- Electronic immobilizer
- Central locking with remote control and remote luggage compartment release

**Extra equipment**

- Tires: 4 all-season tires
- Safety partition net for luggage compartment

- Package: Driver Assistance Package (for manual transmission) (Intelligent cruise control, adaptive; traffic sign recognition system; wrong-way driver warning function; evasive steering assist; distance display and distance warning; high beam assist (in conjunction with adaptive LED matrix headlights with glare-free high beam assist); blind spot assist with cross traffic alert including emergency braking function (when reversing out of parking spaces) and trailer detection; reversing camera with split-view technology)

**Brief expert findings**

Documents submitted	At the time of the inspection, the vehicle registration certificate Part 2 (title) was available, but the vehicle registration certificate Part 1 (document) was not. (Copy)
VIN comparison	The vehicle identification number (VIN) was read from the vehicle and its conformity with the submitted documents was confirmed by the undersigned during the inspection.
Inspection	The inspection conditions were sufficient for the assessment of the vehicle. Lifting equipment and/or a pit were available for examining the vehicle.
Test drive	No test drive/shunting maneuver was carried out during the inspection of the vehicle.
Engine function test	An engine test run was performed.

**Value reducing factors**

No.	Component group	Description
1	Door - front left side	Door - Scratch(es) - Smart repair

**Wear and tear**

No.	Component group	Description
1	Vehicle glazing	Windscreen - Stone chips - No deduction

The vehicle shows signs of wear and tear commensurate with its age and use.

**Order/Scope of Order**

An order was placed to prepare a sales report for the described vehicle. This report includes the following:

- Description of key vehicle information
- Documentation of equipment features  
*(Delivery by third-party service providers)*
- Documentation of damage, defects, missing parts
- Documentation of prior damage, unrepaired prior damage, repainting
- A brief visual or functional inspection of the equipment details, if possible.  
*(Functional testing of driver assistance systems is not included in the scope of services!)*
- a photographic documentation of the vehicle



## Basis for the order

This product is based on the guidelines for vehicle returns and valuations published by Alphabet Fleet GmbH. The expert makes the specific findings in each individual case objectively, within the framework of the prescribed standards, based on their own expertise.

The vehicle inspection takes place in a fully assembled, unassembled state.

Damage or defects that can only be detected during disassembly/diagnostic work or through further investigation remain within the realm of prognostic risk. An increased risk exists due to concealed defects caused by fraudulent misrepresentation and which were not identifiable by the expert.

Damage or defects resulting from normal use or wear and tear of the vehicle will be accepted in accordance with the applicable standard.

There was no explicit identification or monetary consideration of the expected features within the product.

Features which, in their nature and extent, slightly exceed normal use but do not constitute unacceptable damage, will be documented and indicated as signs of wear, if applicable.

Damage or defects that, according to the applicable standard, can no longer be attributed to normal use or wear and tear are listed under "Value Reducing Factors" in the product description.

Depending on the product specification, a monetary ID can be provided. If this takes place, the costs can be 100% d or pro rata depending on the vehicle's age and mileage.

## Previous damages

No apparent prior damage that had been repaired could be found on the vehicle.



Figure 1: Diagonal front (left)



Figure 2: Diagonal front (right)



Figure 3: Diagonal rear (left)



Figure 4: Diagonal rear (right)

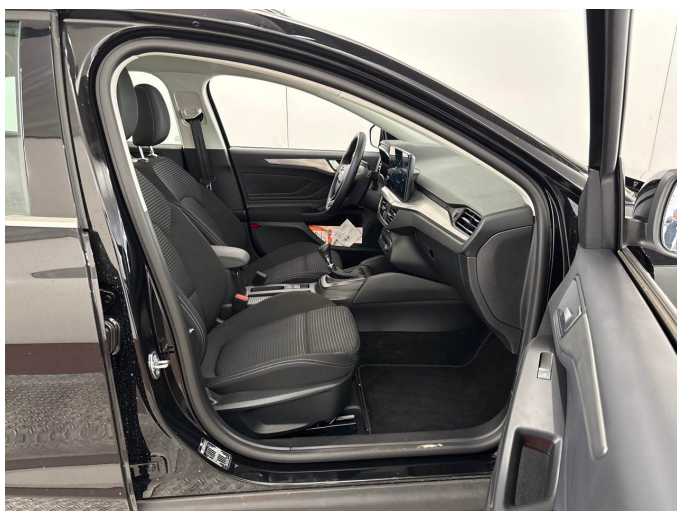


Figure 5: Interior - front



Figure 6: Interior - rear



Figure 7: Instrument cluster



Figure 8: Instrument panel



Figure 9: Interior 360° view



Figure 10: Cargo area

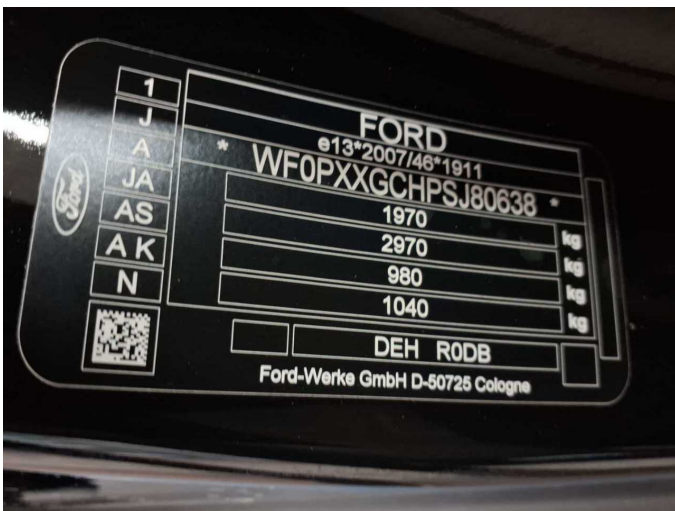


Figure 11: VIN



Figure 12: Mounted tyres

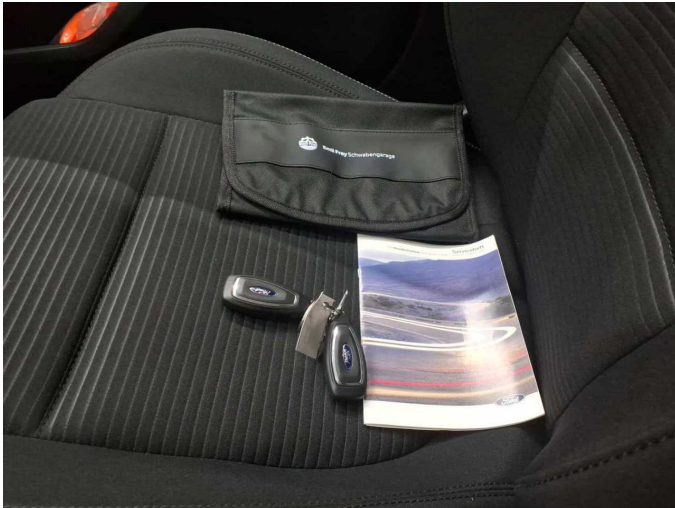


Figure 13: Documents



Figure 14: Documents



Figure 15: Navigation



Figure 16: Misc.



Figure 17: Misc.

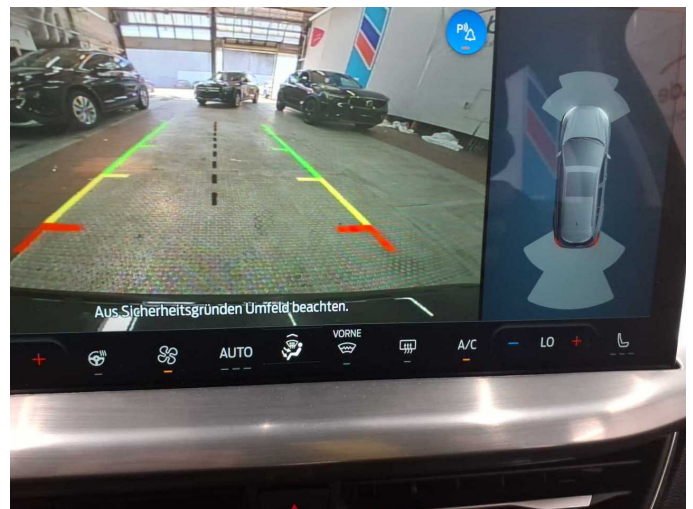


Figure 18: Misc.



Figure 19: Misc.



Figure 20: Misc.



Figure 21: Misc.

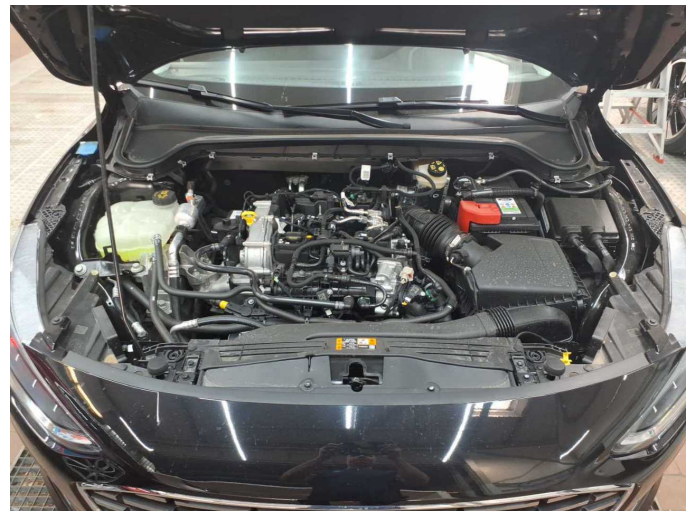


Figure 22: Misc.

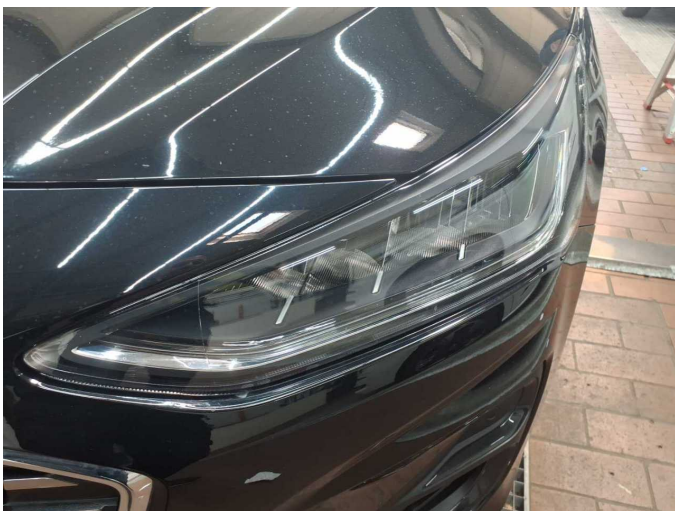


Figure 23: Misc.

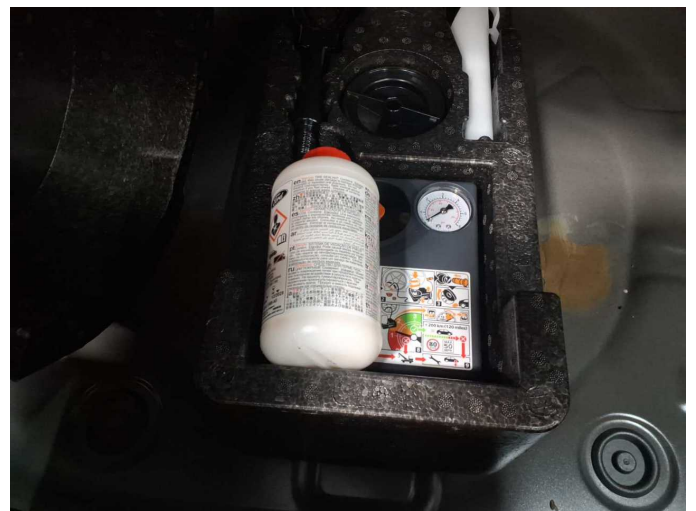


Figure 24: Misc.



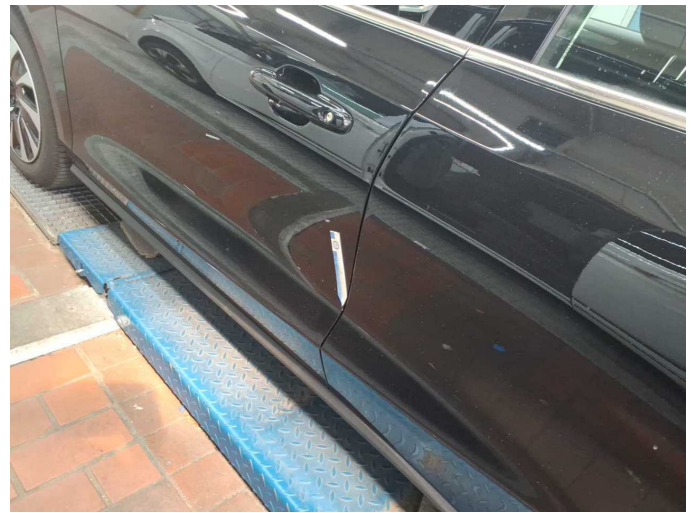
Figure 25: Misc.



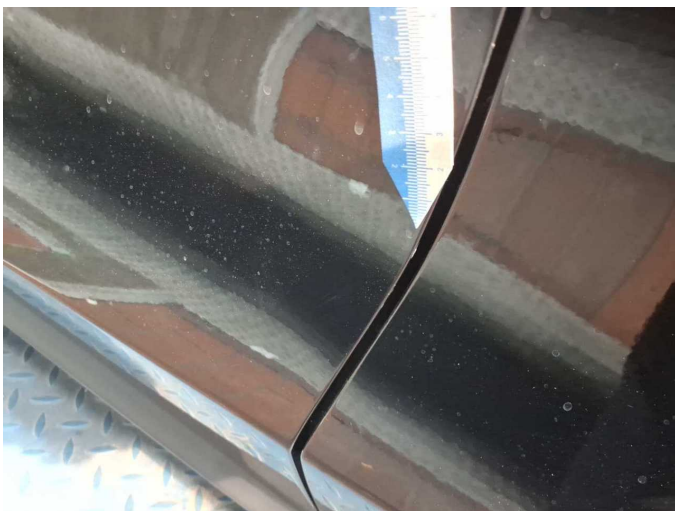
Figure 26: Misc.



Figure 27: Misc.



Damage 1: Door - front left side: Door - Scratch(es) - Smart repair



Damage 1: Door - front left side: Door - Scratch(es) - Smart repair