

Expertise

Protocol number: 45492332
Order No. / Reference: 26373722
Inspection date: 18 May 2026

Manufacturer: Skoda

Model: Superb Combi 2.0 TDI DSG Style

VIN: TMBJH7NP6P7033064



Vehicle details

Manufacturer / Type / Model / Equipment

Skoda Superb Combi 2.0 TDI DSG Style

Vehicle Identification number TMBJH7NP6P7033064

Mileage (Read) 133,364 km

First registration 3 Mar 2023

Number of holders 1

Next periodical technical inspection 04/2028

(Report on hand)

Power / Engine displacement 110 kw / 1,968 ccm

Fuel type / Cylinder Diesel / 4

Gearbox / Number of gears Automatic / 7

Type of drive Front drive

Type of vehicle Station wagon

Colour / colour code Blau Race Metallic (F5W)

Doors / Seats 5 / 5

Upholstery type Cloth

Colour of upholstery Black-Anthracite

Vehicle with smoke odor no

readiness to drive Not roadworthy /
moveable



Vehicle details			
Maintenance booklet / proof	digital proof / complete	Next maintenance in	6,100 km
Last service on / at	12/2025 at 124,413 km		
Key is / should be	3 / 3	FZG documents	ZB#2 (B) was available (copy), ZB#1 (S) was not available.
		Letter No.	GQ545365
Previous damage / Accident	Detectable	Repainting	Detectable
Inspection conditions	sufficient	Lifting equipment / pit	yes
Test drive	short drive on the company premises	Engine function test	Performed
readiness to drive	Not roadworthy / moveable		
Manufacturer key number/ type code number	8004 / APL 02111		
Permitted total weight	2,196 kg	Empty weight	

Tyres

Mounted tyres				
#	Tyre size	Type of tyre	Manufacturer	Tread depth
1)	215/55 R17 94V	Summer tyres on Light alloy	Michelin	3mm / 3mm
2)	215/55 R17 94V	Summer tyres on Light alloy	Michelin	6mm / 6mm
Additional tyres				
#	Tyre size	Type of tyre	Manufacturer	Tread depth
1)	215/60 R16 99H	Winter tyres on Light alloy	Continental	8mm / 8mm
2)	215/60 R16 99H	Winter tyres on Light alloy	Pirelli	6mm / 6mm
Replacement				
Typ	Tyre size	Type of tyre	Manufacturer	Tread depth
	Tirefit	Expiration date 11/2026		

Legend: Tread depth information for the left tire is listed first, for the right tire it is listed second on the axle in the direction of travel.

TÜV SÜD Auto Partner GmbH
Wiesenring 2
04159 Leipzig

Inspection location
ARS Altmann AG Niederlassung
Wolnzach
Feierabendmühle 2
85283 Wolnzach



Equipment



Standard equipment

- Closed storage compartments behind the wheel arches in the trunk, including cargo elements
- Airbag, driver's knee airbag
- Airbag, front side airbags
- Traction control (ASR)
- Electrically adjustable and heated exterior mirrors
- Exterior mirrors and door handles in body color
- Illuminated glove compartment
- Hydraulic brake assist (HBA)
- Roof rails, anodized
- Diesel particulate filter and SCR catalyst
- Tachometer
- Dynamic Light Assistant (Masked Continuous High Beam)
- Electric tailgate opening
- Electronic transverse differential lock (XDS+)
- Driving light assistant and rain sensor (Easy Light Assist)
- Front radar assistant including city emergency braking function
- Cruise control system including speed limiter
- Tinted windows
- Rear window wiper including windshield washer system
- ISOFIX preparation on the outer rear seats, including top tether
- Boot cover, roll-up and removable, semi-automatic
- Radiator grille slats, frame and window surround chrome-plated
- LED reading lights at the front and rear of the headliner
- Remote release of the rear seat backrests in the trunk
- Steering wheel: Height and reach adjustable leather steering wheel
- Matrix LED headlights
- Front center armrest with storage compartment
- Engine drag torque control (MSR)
- Multi-collision brake
- Rear parking sensors
- Radio: Bolero infotainment system
- Radio accessories: Voice control
- Radio accessories: Wireless SmartLink
- Umbrella compartments in the front side doors
- Tire mobility kit
- Gearshift and handbrake levers in leather
- Electromechanical power steering
- Seats: Heated front seats
- Seats: Electrically adjustable front seats
- Seats: Height-adjustable front seats
- Seats: Rear seat backrest split 60:40, foldable
- Sun visor on driver and passenger side with illuminated make-up mirror
- 12V socket in the center console, front and rear
- Telephone: Bluetooth hands-free system
- Chrome-plated elements
- Lashing eyes in the trunk
- Central locking with remote control
- Storage compartments
- Airbag, driver and switchable passenger airbag
- Airbag, head airbags
- Anti-lock braking system (ABS)
- Dashboard in black / black, door trim in black, headliner in grey
- Electrically folding exterior mirrors
- Hill start assist
- Grey headliner
- Decorative inlay Dark Brushed
- Digital Cockpit Plus 10.2"
- Third brake light
- Easy Start (start-stop button instead of ignition lock)
- Electronic parking brake including auto-hold function
- Electronic Stability Control (ESC)
- Electric windows front and rear, including anti-pinch protection and child safety lock
- Front and rear footwell lighting
- Transmission: 7-speed dual-clutch transmission (DSG)
- Heated rear window
- Interior mirror automatically dimming
- Child safety lock for rear doors & windows, electric
- Air Care Climatronic air conditioning (2-zone)
- Front and rear headrests are height-adjustable.
- Paint finish: Solid
- Metal loading sill protector
- LED taillights in crystal glass look and animated turn signals
- Steering wheel: Steering wheel with multifunction buttons including paddle shifters
- Rear center armrest with cup holders and pass-through option
- Multifunctional storage compartment under the boot cover
- LED fog lights with integrated cornering lights
- Upholstery: Cloth
- Radio accessories: Digital radio reception DAB+
- Radio accessories: USB ports at the front (Type-C) and USB charging port (Type-A) in the center armrest
- Tire pressure monitoring
- Wheels: 17" Drakon alloy wheels
- Heated windshield washer nozzles
- Superb seat belts
- Seats: Adjustable lumbar support in the front seats
- Seats: Electric operation of the front passenger seat from the rear
- SKODA Care Connect
- Start/stop system including brake energy recuperation
- 12V socket in the trunk
- Sunset (rear window and rear side windows tinted dark)
- Door sill plates
- Glazing: Acoustic glazing in the front side windows
- Immobiliser



Extra equipment

- Heated windshield, wireless
- Adapter removed from WDL
- Paint finish: Metallic
- Package: Business Amundsen (Amundsen navigation system - 8" capacitive touchscreen in glass design - Phonebox - Traveller assistance system (traffic sign recognition, predictive lane keeping assist pACC, adaptive lane keeping assist, emergency and traffic jam assist, capacitive steering wheel with hands-off detection) - 230 V socket and 3 USB ports, tablet holder - Infotainment Online (3-year subscription))
- Package: Transport (Combi) (Boot net - Variable loading floor - Luggage net partition)
- WD5 waste bin omission
- Lounge Step removed from WD3
- Package: Assistance Plus (Lane Change Assist - Area View - Trailer Maneuvering Assist & Park Assist - Trailer Hitch - (Active Tire Pressure Monitoring System) - Driver Fatigue Detection)
- Package: Comfort Plus (Combi, Style) (3-zone Climatronic - heated front and rear seats - KESSY - 3rd vehicle key - comfort opening for the tailgate - heated steering wheel (with shift paddles) - sunshade for the rear side windows - Argenzo-Zebrano trim strip - ambient lighting)
- Accessories - Cargo element
- Accessories - Stainless steel rear protection strip

Brief expert findings

Documents submitted	At the time of the inspection, the vehicle registration certificate Part 2 (title) was available, but the vehicle registration certificate Part 1 (document) was not. (Copy)
VIN comparison	The vehicle identification number (VIN) was read from the vehicle and its conformity with the submitted documents was confirmed by the undersigned during the inspection.
Inspection	The inspection conditions were sufficient for the assessment of the vehicle. Lifting equipment and/or a pit were available for examining the vehicle.
Test drive	A short maneuvering and shunting exercise was carried out on the company premises.
Engine function test	An engine test run was performed.
readiness to drive	The vehicle was not capable of driving under its own power at the time of inspection, but can be moved on its own axle with the aid of assistance.

Value reducing factors

No.	Component group	Description
1	Door - front right side	Brightware - lower - Scratch(es) - Smart repair
2	Door - front left side	Brightware - lower - Scratch(es) - Smart repair
3	Side panel - rear right side	Sill - Scratch(es) - Smart repair
4	Equipment	Vehicle key with remote control - Non-operational - Perform diagnosis
5	Instrument panel	Indicator light (Motor) - Electrical fault - Perform diagnosis
6	Door - front right side	Door - Dent / paintcoat damage - Repair and paint
7	Front bumper	Front bumper - Scratched - Paint
8	Rear bumper	Rear bumper - Scratch(es) - Repair and paint
9	Body	Body - Damage by hail - repair according to calculation

Previous damages

No.	Previous damage	Extent of damage (Net)
1	Rear, Provided by user / customer, from 13 Jan 2026	2.997,57 €

Repainting

No.	Repainting
1	Boot lid / rear door, Professionally carried out, Invoice of repair done Non-existent



Paint coat thickness measurement

Boot lid / rear door

687 µm

Order/Scope of Order

An order was placed to prepare a sales report for the described vehicle. This report includes the following:

- Description of key vehicle information
- Documentation of equipment features
(*Delivery by third-party service providers*)
- Documentation of damage, defects, missing parts
- Documentation of prior damage, unrepaired prior damage, repainting
- A brief visual or functional inspection of the equipment details, if possible.
(*Functional testing of driver assistance systems is not included in the scope of services!*)
- a photographic documentation of the vehicle

Basis for the order

This product is based on the guidelines for vehicle returns and valuations published by Alphabet Fleet GmbH. The expert makes the specific findings in each individual case objectively, within the framework of the prescribed standards, based on their own expertise.

The vehicle inspection takes place in a fully assembled, unassembled state.

Damage or defects that can only be detected during disassembly/diagnostic work or through further investigation remain within the realm of prognostic risk. An increased risk exists due to concealed defects caused by fraudulent misrepresentation and which were not identifiable by the expert.

Damage or defects resulting from normal use or wear and tear of the vehicle will be accepted in accordance with the applicable standard.

There was no explicit identification or monetary consideration of the expected features within the product.

Features which, in their nature and extent, slightly exceed normal use but do not constitute unacceptable damage, will be documented and indicated as signs of wear, if applicable.

Damage or defects that, according to the applicable standard, can no longer be attributed to normal use or wear and tear are listed under "Value Reducing Factors" in the product description.

Depending on the product specification, a monetary ID can be provided. If this takes place, the costs can be 100% d or pro rata depending on the vehicle's age and mileage.

Previous damages

According to available information previous damages were repaired at the vehicle. Traces of repairs, which allow conclusions about the area of repair, were not recognizable during the inspection.

Comments

- Winterradsatz ist kein Bestandteil des Auslieferungsumfanges.



Figure 1: Diagonal front (left)



Figure 2: Diagonal front (right)



Figure 3: Diagonal rear (left)



Figure 4: Diagonal rear (right)



Figure 5: Interior - front



Figure 6: Interior - rear



Figure 7: Instrument cluster



Figure 8: Instrument panel



Figure 9: Interior 360° view



Figure 10: Cargo area

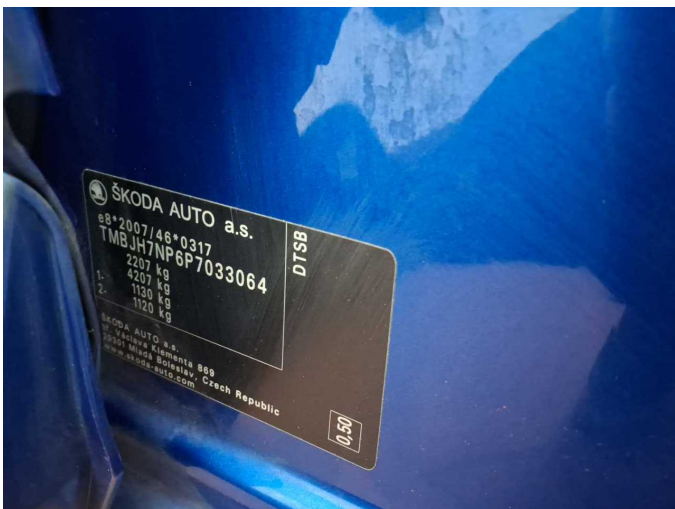


Figure 11: VIN



Figure 12: Mounted tyres



Figure 13: Documents



Figure 14: Documents

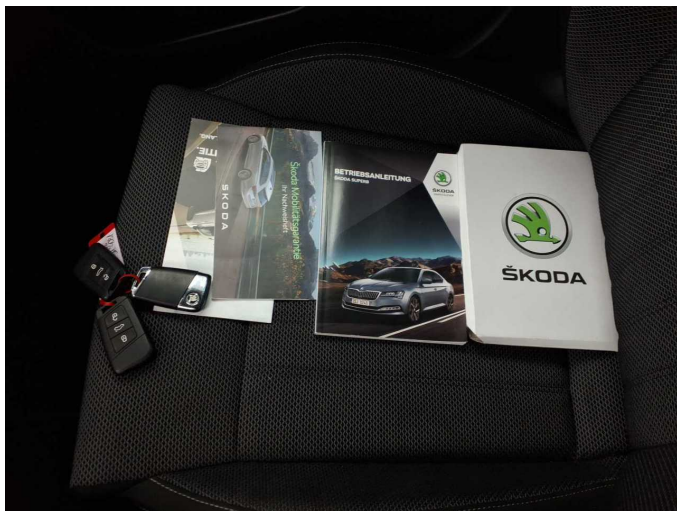


Figure 15: Documents



Figure 16: Additional tyres



Figure 17: Navigation

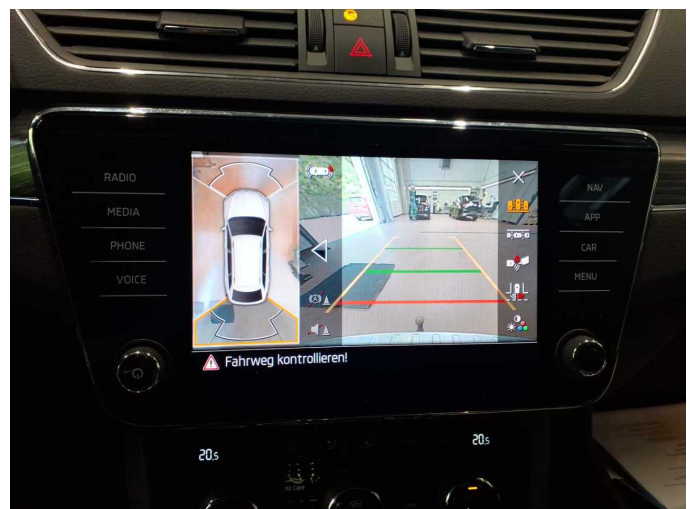


Figure 18: Misc.



Figure 19: Misc.



Figure 20: Misc.



Figure 21: Misc.



Figure 22: Misc.



Figure 23: Misc.

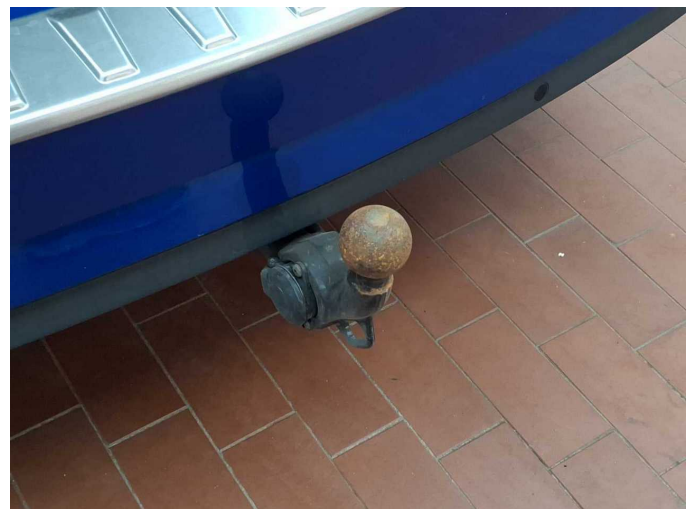


Figure 24: Misc.



Figure 25: Misc.



Figure 26: Misc.

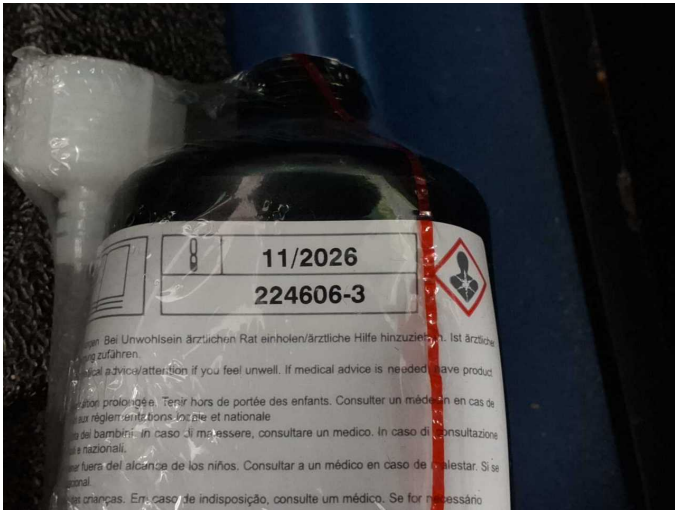


Figure 27: Misc.



Figure 28: Misc.



Figure 29: Misc.



Figure 30: Misc.



Figure 31: Misc.



Figure 32: Misc.



Figure 33: Misc.



Figure 34: Misc.



Damage 1: Door - front right side: Brightware - lower - Scratch(es) - Smart repair



Damage 1: Door - front right side: Brightware - lower - Scratch(es) - Smart repair



Damage 2: Door - front left side: Brightware - lower - Scratch(es) - Smart repair



Damage 2: Door - front left side: Brightware - lower - Scratch(es) - Smart repair



Damage 3: Side panel - rear right side: Sill - Scratch(es) - Smart repair



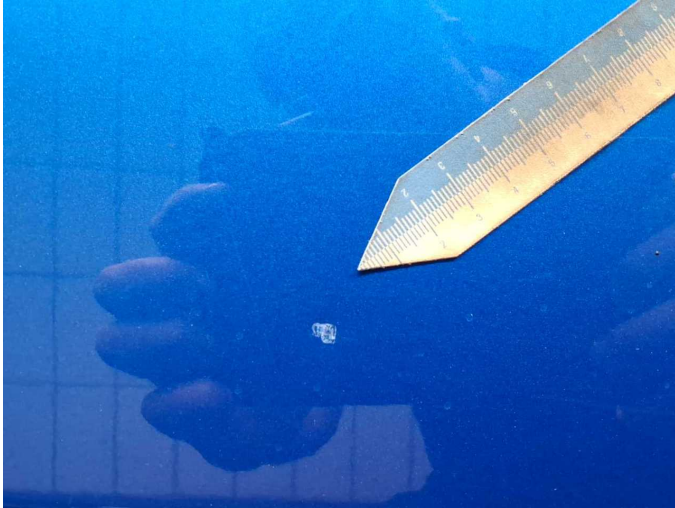
Damage 3: Side panel - rear right side: Sill - Scratch(es) - Smart repair



Damage 5: Instrument panel: Indicator light (Motor) - Electrical fault - Perform diagnosis



Damage 6: Door - front right side: Door - Dent / paintcoat damage - Repair and paint



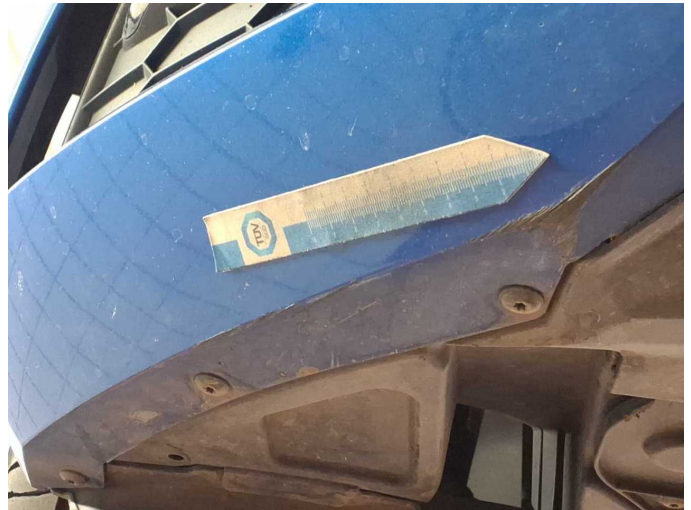
Damage 6: Door - front right side: Door - Dent / paintcoat damage - Repair and paint



Damage 6: Door - front right side: Door - Dent / paintcoat damage - Repair and paint



Damage 7: Front bumper: Front bumper - Scratched - Paint



Damage 7: Front bumper: Front bumper - Scratched - Paint



Damage 7: Front bumper: Front bumper - Scratched - Paint



Damage 8: Rear bumper: Rear bumper - Scratch(es) - Repair and paint



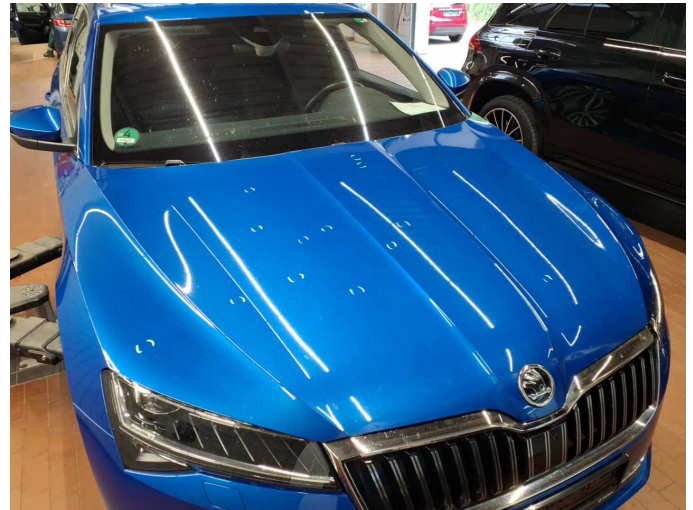
Damage 8: Rear bumper: Rear bumper - Scratch(es) - Repair and paint



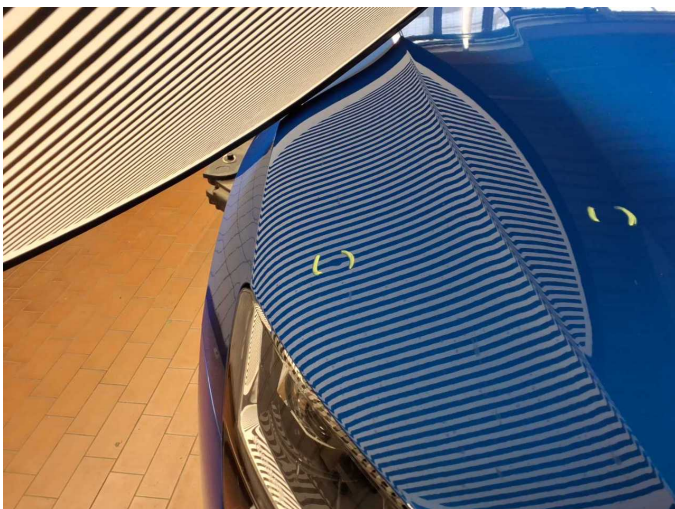
Damage 8: Rear bumper: Rear bumper - Scratch(es) - Repair and paint



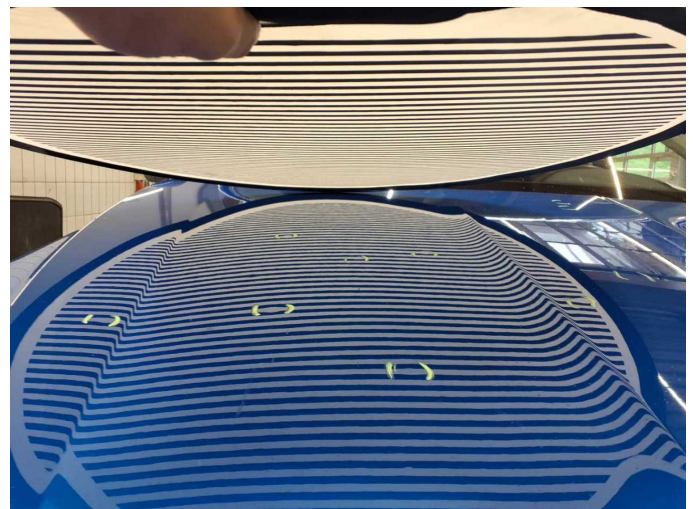
Damage 8: Rear bumper: Rear bumper - Scratch(es) - Repair and paint



Damage 9: Body: Body - Damage by hail - repair according to calculation



Damage 9: Body: Body - Damage by hail - repair according to calculation



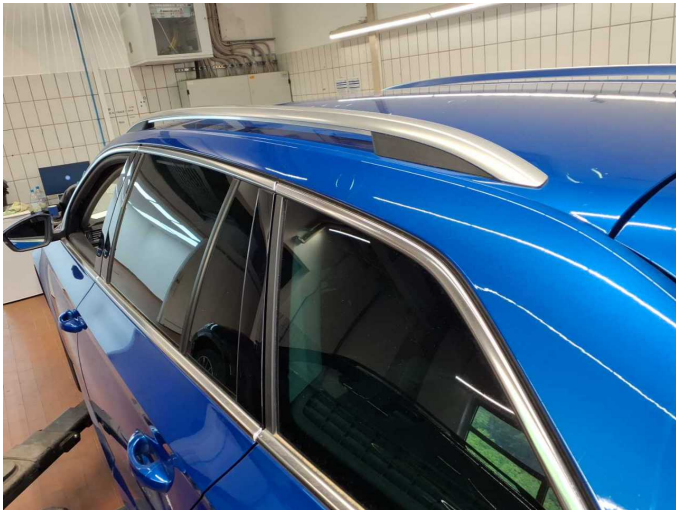
Damage 9: Body: Body - Damage by hail - repair according to calculation



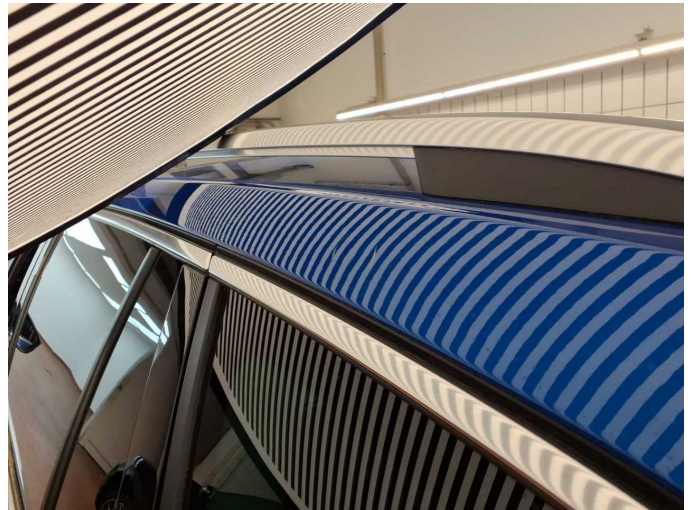
Damage 9: Body: Body - Damage by hail - repair according to calculation



Damage 9: Body: Body - Damage by hail - repair according to calculation



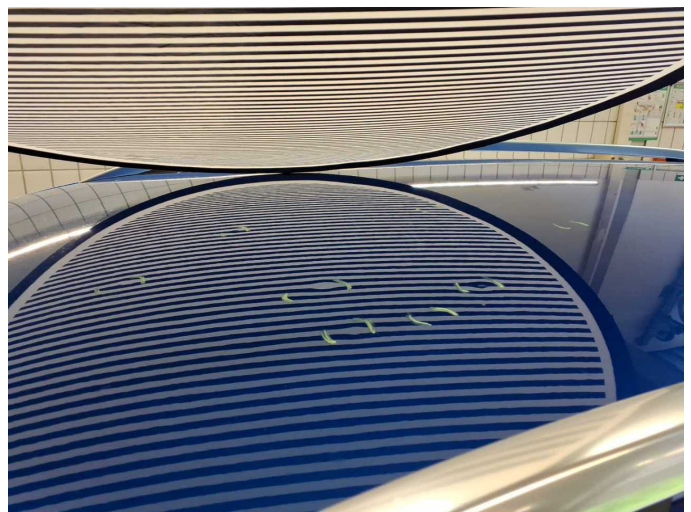
Damage 9: Body: Body - Damage by hail - repair according to calculation



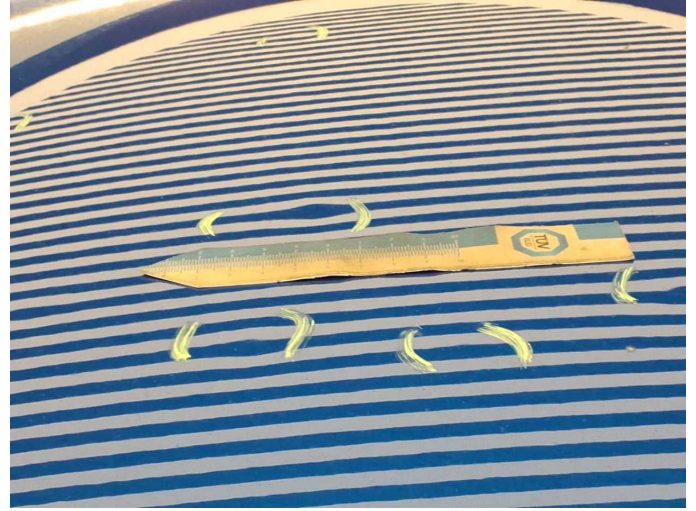
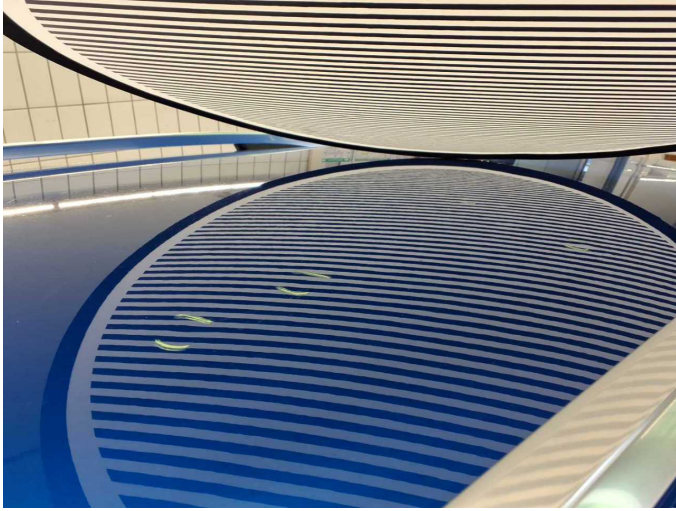
Damage 9: Body: Body - Damage by hail - repair according to calculation



Damage 9: Body: Body - Damage by hail - repair according to calculation



Damage 9: Body: Body - Damage by hail - repair according to calculation



Damage 9: Body: Body - Damage by hail - repair according to calculation

Damage 9: Body: Body - Damage by hail - repair according to calculation



Repainting 1: Boot lid / rear door



Wartungshistorie

(gemäß Auftraggeber Informationen)

Fahrgestellnummer: TMBJH7NP6P7033064

Hersteller / Modell: SKODA SKODA Superb Combi 2.0 TDI DSG Style

Datum	KM-Stand	Beschreibung
23.04.2026	132.217	AU
29.12.2025	124.675	Batterie ern; Batterie ern; Batterie ern; Systemtest/Eigendiagnose; Systemtest/Eigendiagnose; Systemtest/Eigendiagnose
18.12.2025	124.413	Getriebeöl ern/prüfen; Regelwartungsdienst
22.09.2025	116.530	Motoröl b. Wartung; Ölfilter ern; Ölwechsel; Wartung Sonstiges
19.12.2024	92.951	Bremse Sonstiges; Bremsflüssigkeit; Bremsflüssigkeit ern; Bremsklötze hinten; Kraftstofffilter ern; Luftfiltereinsatz ern; Motoröl b. Wartung; Ölfilter ern; Regelwartungsdienst; Wartung Sonstiges
06.05.2024	60.733	Motoröl b. Wartung; Ölfilter ern; Regelwartungsdienst; Wartung Sonstiges
02.10.2023	31.868	Motoröl b. Wartung; Ölfilter ern; Regelwartungsdienst; Wartung Sonstiges