

Expertise

Protocol number: 46236947
Order No. / Reference: 26542352
Inspection date: 22 Jun 2026

Manufacturer: Volkswagen

Model: ID.3 Performance Upgrade Pro Tech

VIN: WVVZZZE1ZMP073970



Vehicle details

Manufacturer / Type / Model / Equipment

Volkswagen ID.3 Performance Upgrade Pro Tech

Vehicle Identification number	WVVZZZE1ZMP073970
Mileage (Read)	141,598 km
First registration	10 Jun 2021
Number of holders	1
Next periodical technical inspection	06/2026 (Report not on hand)

Power / Engine displacement	70 kw / 0 ccm
------------------------------------	---------------

Fuel type / Cylinder	Electric / 0
-----------------------------	--------------

Gearbox / Number of gears	Direct drive / 1
----------------------------------	------------------

Type of drive	Rear drive
----------------------	------------

Type of vehicle	Saloon car
------------------------	------------

Colour / colour code	Mondsteingrau/ Dach Schwarz
-----------------------------	--------------------------------

Doors / Seats	5 / 5
----------------------	-------

Upholstery type	Alcantara / cloth
------------------------	-------------------

Colour of upholstery	Grey
-----------------------------	------

Re-import	no
------------------	----

readiness to drive	Roadworthy
---------------------------	------------



Vehicle details

Maintenance booklet / proof	digital proof / complete	Next maintenance in	-176 Tag(e)
Last service on / at	03/2025 at 118,877 km		
Key is / should be	2 / 2	FZG documents	ZB#2 (B) was available (copy), ZB#1 (S) was not available.
		Letter No.	GC307875
Previous damage / Accident	Detectable	Repainting	None detectable
Inspection conditions	sufficient	Lifting equipment / pit	No
Test drive	Not performed	Engine function test	Performed
readiness to drive	Roadworthy		
Manufacturer key number/ type code number	0603 / CKV 00018		
Emission standard	2017/1151;WLTP;reine Elektrofz	fine dust sticker	
Permitted total weight	2,270 kg	Empty weight	

Tyres

Mounted tyres

#	Tyre size	Type of tyre	Manufacturer	Tread depth
1)	215/50 R19 93T	All-season tyres on Light alloy	Continental	6mm / 6mm
2)	215/50 R19 93T	All-season tyres on Light alloy	Continental	3mm / 3mm

Legend: Tread depth information for the left tire is listed first, for the right tire it is listed second on the axle in the direction of travel.

TÜV SÜD Auto Partner GmbH
Wiesenring 2
04159 Leipzig

Inspection location
Hartmann Fleet Professionals GmbH
Leerenstraße 25
29683 Bad Fallingbommel



Equipment



Standard equipment

- Airbag for driver and front passenger (with passenger airbag deactivation)
- Anti-lock braking system (ABS)
- Adaptive Cruise Control (ACC) "stop & go", including speed limiter
- Vehicle tool kit
- third brake light
- Car2X (Using the WLANp ITS G5 standard, all Car2X-enabled vehicles and traffic systems such as traffic lights can transmit data at high speed without using the mobile network. This works over a distance of around 800 meters - enough to warn of an invisible traffic jam.)
- e-Sound (artificially generated engine noise to inform other road users about the approach of the e-vehicle)
- Electronic Stability Program (ESP)
- Driving profile selection
- Transmission: Direct drive, 1-speed
- Rear window heated
- Interior mirror automatically dimming
- "Climatronic" air conditioning system (active combination filter - stationary air conditioning)
- Mode 3 Type 2 charging cable, 16 A
- Charging: 11 kW AC charging capacity
- LED taillights with dynamic turn signals
- Illuminated strip between headlights and door handle recesses
- Illuminated makeup mirrors in the sun visors
- Fatigue detection (detects signs of possible driver fatigue based on characteristic steering behavior, time of day and driving duration and issues a visual and audible warning)
- Emergency braking assistant "Front Assist" with pedestrian and cyclist detection
- Stainless steel pedals (in "Play/Pause" design)
- Proactive occupant protection system in conjunction with "Front Assist" (detects critical traffic situations with increased accident potential - prepares vehicle occupants and the vehicle for a possible accident by tightening the front, fastened seat belts and securing the driver and front passenger, and closing open windows and the sunroof except for a gap)
- Radio accessories: 2 USB-C ports at the front, 2 USB-C charging ports at the rear of the center console
- Rain sensor
- Wheels: Tire Mobility Set with 12-volt compressor and tire sealant
- Keyless locking and starting system "Keyless Access" with safe locking mechanism
- Seat belts: Three-point automatic seat belts at the front with belt tensioners
- Seats: Armrests, front seats
- Seats: Heated front seats
- Seats: Front seats are height-adjustable
- Airbag: Front head and side airbags, with center airbag
- 30-color ambient lighting
- App-Connect including App-Connect Wireless for Apple CarPlay and Android Auto
- Electrically adjustable, folding, and heated exterior mirrors with passenger-side mirror lowering function (driver's side aspherical - passenger side convex)
- Anti-theft alarm system with interior monitoring, backup horn and tow-away protection
- Dynamic Light Assist (allows you to drive permanently with high beams without dazzling oncoming traffic - a masking function partially dims the high beam headlights)
- Parking aid (warning signals for obstacles in the front and rear area)
- Driving assistant "Travel Assist", lane keeping assistant "Lane Assist" and "Emergency Assist"
- Head-up display
- rear window wiper
- ISOFIX mounting points (for child seats on the outer rear seats and on the front passenger seat, i-Size compatible)
- Headrests (5) front and rear
- Charging: 100 kW direct current (DC) charging capacity
- LED matrix headlights (with automatic headlight control, bad weather light, welcome function)
- Steering wheel: Multifunction leather steering wheel (heated - touch controls)
- Center console with illuminated storage compartment with roller blind (2 cup holders)
- Navigation system "Discover Pro" (map with 2D display - traffic sign display - points of interest - voice control)
- eCall emergency call system
- Panoramic roof
- Upholstery in "Flow" fabric (center panels of the front seats and the outer rear seats in "Flow" fabric)
- Radio: "Ready 2 Discover" (25.4cm touchscreen - FM radio reception - Diversity antenna for FM reception - Dual tuner with phase diversity for the best possible radio reception - Radio Data System (RDS) - Radio station logos - MP3 playback - Apple compatibility for USB interface - 4x20W output power - Gesture control - Voice control - DAB+ digital radio reception)
- Radio accessories: 6 + 1 speakers
- Tire pressure monitoring system (passive)
- Rear View reversing camera
- Automatically heated front windshield washer nozzles
- Rear side windows and rear window tinted
- Electromechanical power steering (speed-dependent control)
- Seats: 3 rear seats, rear seat backrest asymmetrically split and foldable (with pass-through and center armrest, 2 cup holders)
- Lane change assistant "Side Assist"
- Ambient lighting with logo projection
- First aid kit, warning triangle and high-visibility vest



- "Comfort" telephone interface with inductive charging function (hands-free system - Bluetooth audio - external antenna connection with LTE support)
- Warning tone and light for unfastened seat belts front and rear

- Traffic sign recognition
- Electronic immobilizer

Extra equipment

- Detachable towbar (device for attaching a bicycle carrier to towbars, detachable)
- Wheels: 4 "Andoya" alloy wheels 7.5 J x 19 in black, diamond-turned finish (Airstop all-season tires 215/50 R 19 - wheel locking with extended theft protection)
- heat pump compensation
- Charging cable: Mains charging cable for household socket
- Textile floor mats front and rear
- Heat pump for range optimization

Brief expert findings

Documents submitted	At the time of the inspection, the vehicle registration certificate Part 2 (title) was available, but the vehicle registration certificate Part 1 (document) was not. (Copy)
VIN comparison	The vehicle identification number (VIN) was read from the vehicle and its conformity with the submitted documents was confirmed by the undersigned during the inspection.
Inspection	The inspection conditions were sufficient for the assessment of the vehicle. No lifting equipment or pit was available for inspecting the vehicle. Therefore, inspection of the vehicle's underside was only possible to a limited extent.
Test drive	No test drive/shunting maneuver was carried out during the inspection of the vehicle.
Engine function test	An engine test run was performed.
readiness to drive	The vehicle was roadworthy at the time of inspection.

Value reducing factors

No.	Component group	Description
1	Wheel / tyres	Tyres - complete set - Differs from the original configuration - No deduction
2	Wheel / tyres	Alloy rim - front right side - Scratch(es) - Loss in value
3	Misc.	Main inspection - Due - Perform
4	Wheel / tyres	Tyre - right - Worn - Replace
5	Misc.	Inspection / maintenance - Due - Replace
6	Mudguard - left side	Mudguard - left side - Deformed - Repair and paint
7	Door - front left side	Door - Dent / paintcoat damage - Repair and paint

Wear and tear

No.	Component group	Description
1	Boot lid / rear door	Boot lid - dent(s) - No deduction
2	Rear bumper	Rear bumper - dent(s) - No deduction
3	Vehicle glazing	Windscreen - Stone chips - No deduction

The vehicle shows signs of wear and tear commensurate with its age and use.

Previous damages

No.	Previous damage	Extent of damage (Net)
1	Front, Provided by user / customer, from 21 Jul 2023	2.168,55 €



Accident damages

No. Accident

1 Side right

Order/Scope of Order

An order was placed to prepare a sales report for the described vehicle. This report includes the following:

- Description of key vehicle information
- Documentation of equipment features
(*Delivery by third-party service providers*)
- Documentation of damage, defects, missing parts
- Documentation of prior damage, unrepaired prior damage, repainting
- A brief visual or functional inspection of the equipment details, if possible.
(*Functional testing of driver assistance systems is not included in the scope of services!*)
- a photographic documentation of the vehicle

Basis for the order

This product is based on the guidelines for vehicle returns and valuations published by Alphabet Fleet GmbH. The expert makes the specific findings in each individual case objectively, within the framework of the prescribed standards, based on their own expertise.

The vehicle inspection takes place in a fully assembled, unassembled state.

Damage or defects that can only be detected during disassembly/diagnostic work or through further investigation remain within the realm of prognostic risk. An increased risk exists due to concealed defects caused by fraudulent misrepresentation and which were not identifiable by the expert.

Damage or defects resulting from normal use or wear and tear of the vehicle will be accepted in accordance with the applicable standard.

There was no explicit identification or monetary consideration of the expected features within the product.

Features which, in their nature and extent, slightly exceed normal use but do not constitute unacceptable damage, will be documented and indicated as signs of wear, if applicable.

Damage or defects that, according to the applicable standard, can no longer be attributed to normal use or wear and tear are listed under "Value Reducing Factors" in the product description.

Depending on the product specification, a monetary ID can be provided. If this takes place, the costs can be 100% d or pro rata depending on the vehicle's age and mileage.

Previous damages

Non-repaired previous damages were found at the vehicle. The necessary repair costs are listed in the expert report or if necessary, are listed in detail in a separately enclosed repair cost calculation.



Figure 1: Diagonal front (left)



Figure 2: Diagonal front (right)



Figure 3: Diagonal rear (left)



Figure 4: Diagonal rear (right)



Figure 5: Interior - front



Figure 6: Interior - rear



Figure 7: Instrument cluster



Figure 8: Instrument panel



Figure 9: Interior 360° view



Figure 10: Cargo area



Figure 11: VIN



Figure 12: Mounted tyres

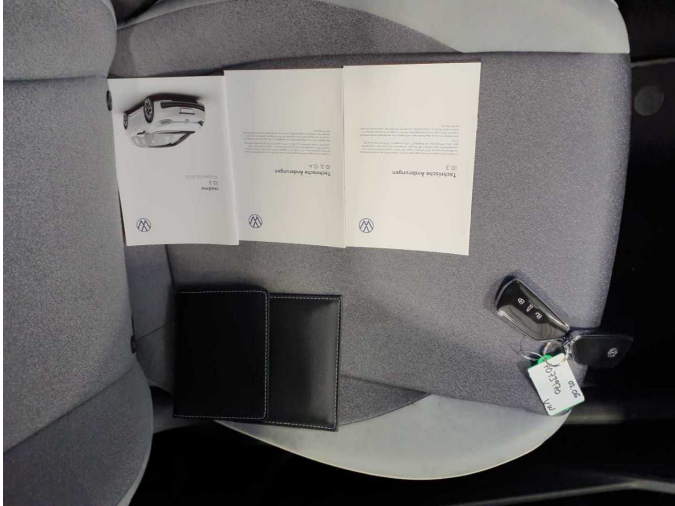


Figure 13: Documents



Figure 14: Navigation



Figure 15: Misc.



Figure 16: Misc.



Figure 17: Misc.



Figure 18: Misc.



Figure 19: Misc.



Figure 20: Misc.



Figure 21: Misc.



Figure 22: Misc.

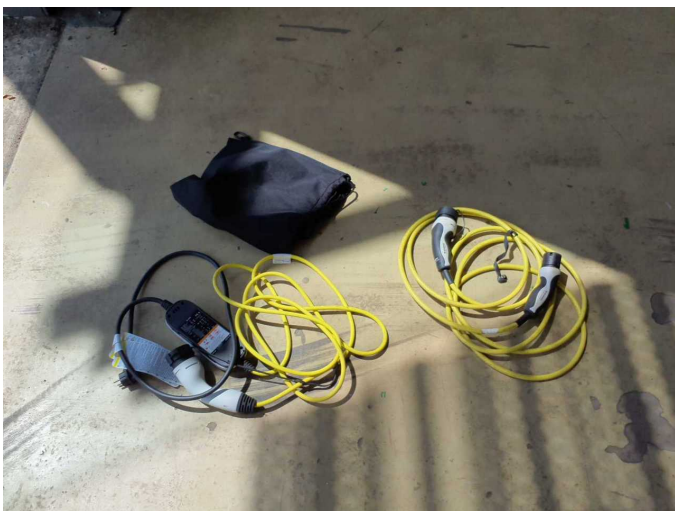


Figure 23: Misc.



Figure 24: Misc.



Figure 25: Misc.



Damage 2: Wheel / tyres: Alloy rim - front right side - Scratch(es) - Loss in value



Damage 2: Wheel / tyres: Alloy rim - front right side - Scratch(es) - Loss in value



Damage 2: Wheel / tyres: Alloy rim - front right side - Scratch(es) - Loss in value



Damage 4: Wheel / tyres: Tyre - right - Worn - Replace



Damage 4: Wheel / tyres: Tyre - right - Worn - Replace



Damage 4: Wheel / tyres: Tyre - right - Worn - Replace



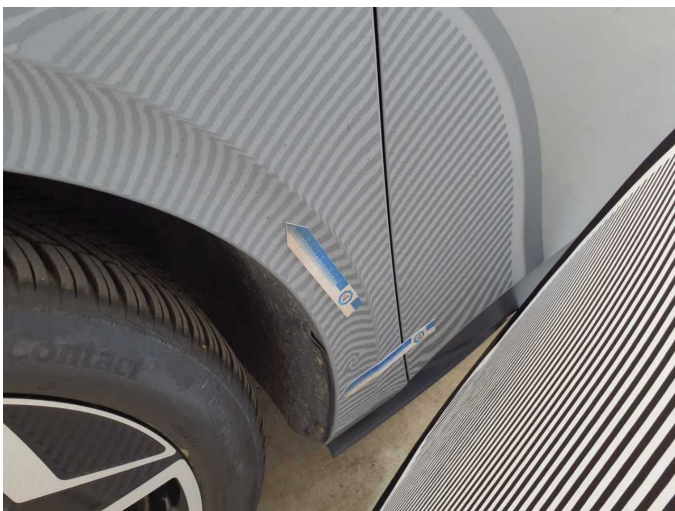
Damage 4: Wheel / tyres: Tyre - right - Worn - Replace



Damage 5: Misc.: Inspection / maintenance - Due - Replace



Damage 6: Mudguard - left side: Mudguard - left side - Deformed - Repair and paint



Damage 6: Mudguard - left side: Mudguard - left side - Deformed - Repair and paint



Damage 6: Mudguard - left side: Mudguard - left side - Deformed - Repair and paint



Damage 6: Mudguard - left side: Mudguard - left side - Deformed - Repair and paint



Damage 7: Door - front left side: Door - Dent / paintcoat damage - Repair and paint



Damage 7: Door - front left side: Door - Dent / paintcoat damage - Repair and paint



Damage 7: Door - front left side: Door - Dent / paintcoat damage - Repair and paint



Damage 7: Door - front left side: Door - Dent / paintcoat damage - Repair and paint



Accident 1: Side right



Accident 1: Side right



Accident 1: Side right



Accident 1: Side right



Accident 1: Side right



Accident 1: Side right