

Expertise

Protocol number: 46141434
Order No. / Reference: 26543924
Inspection date: 24 Jun 2026

Manufacturer: Ford

Model: Focus Turnier 1.5 EcoBlue Start-Stopp-System Aut.
COOL&CONNECT

VIN: WF0PXXGCHPNY33419



Vehicle details

Manufacturer / Type / Model / Equipment

Ford Focus Turnier 1.5 EcoBlue Start-Stopp-System Aut.
COOL&CONNECT

Vehicle Identification number	WF0PXXGCHPNY33419
Mileage (Read)	111,030 km
First registration	11 Mar 2022
Number of holders	1
Next periodical technical inspection	05/2027 (Report not on hand)

Power / Engine displacement	88 kw / 1,499 ccm
Fuel type / Cylinder	Diesel / 4
Gearbox / Number of gears	Automatic / 8
Type of drive	Front drive
Type of vehicle	Saloon car

Colour / colour code	Magnetic Metallic
Doors / Seats	5 / 5
Upholstery type	Cloth
Colour of upholstery	Anthracite-Black



Vehicle details

Maintenance booklet / proof	digital proof / complete	Next maintenance in	41 %
Last service on / at	09/2025 at 93,379 km		
Key is / should be	2 / 2	FZG documents	ZB#2 (B) was available (copy), ZB#1 (S) was not available.
		Letter No.	GH424412
Previous damage / Accident	None detectable	Repainting	None detectable
Inspection conditions	sufficient	Lifting equipment / pit	yes
Test drive	Not performed	Engine function test	Performed
Manufacturer key number/ type code number	8566 / BPV 00636		
Emission standard	EURO6;WLTP;AP;PI/CI; M, N1 I	fine dust sticker	
Permitted total weight	2,035 kg	Empty weight	

Tyres

Mounted tyres

#	Tyre size	Type of tyre	Manufacturer	Tread depth
1)	205/60 R16 96H	Winter tyres on Steel rim with wheel cover	Nokian	4mm / 4mm
2)	205/60 R16 96H	Winter tyres on Steel rim with wheel cover	Nokian	5mm / 5mm

Additional tyres

#	Tyre size	Type of tyre	Manufacturer	Tread depth
1)	205/60 R16 92V	Summer tyres on Light alloy	Goodyear	4mm / 4mm
2)	205/60 R16 92V	Summer tyres on Light alloy	Goodyear	4mm / 4mm

Replacement

Typ	Tyre size	Type of tyre	Manufacturer	Tread depth
	Tirefit	Expiration date 02/2026		

Legend: Tread depth information for the left tire is listed first, for the right tire it is listed second on the axle in the direction of travel.



Equipment

Standard equipment

- Airbag: Passenger airbag deactivation
- Exterior mirrors in body color, driver and passenger side, electrically adjustable and heated
- Tires: 6.5 J x 16 design wheels (4) with 205/60 R16 tires
- Hill start assist
- Roof rails, black
- Diesel particulate filter (DPF)
- Electronic Shifter
- Driver information system with on-board computer, color (10.7 cm screen diagonal)
- Electronic parking brake
- Luggage compartment cover
- Speed limiter
- Transmission: 8-speed automatic transmission
- Back window, heater
- Interior lighting with LED technology
- Isofix bracket
- Headrests: 2 front and 3 rear, height adjustable
- Leather gear knob
- Adjustable steering column
- Center console "Premium" front
- Front and rear parking pilot system
- Post-Collision Assist
- Radio: Ford SYNC 3 Light with AppLink, 8" touchscreen and DAB/DAB+
- Headlight assistant with day/night sensor
- Seats: Passenger seat height-adjustable, manually
- Seats: Map grid on the driver's and front passenger's seat backrests
- Start-stop system
- Carpet floor mats in the front
- Warning system for unfastened seat belts for the 1st and 2nd rows of seats
- Anti-lock braking system (ABS) with electronic brake force distribution (EBD)
- Attachment points behind the second row of seats for mounting the safety partition net
- Fabric headliner
- Roof spoiler painted in car color
- Tachometer
- Electronic Safety and Stability Program (ESP)
- Lane keeping assist including lane keeping assist
- Electric windows front and rear
- FordPass Connect including eCall, live traffic information (only with navigation) and Wi-Fi hotspot
- Cruise control
- Illuminated glove compartment
- Rear window wiper
- Intelligent security system
- Air conditioning, manual
- LED headlights
- Steering wheel: 3-spoke design
- Make-up mirrors in driver and passenger sun visors
- MyKey key system (individually programmable second key)
- Upholstery: Cloth
- Pre-Collision Assist
- Tire repair kit
- Tire Pressure Monitoring System (TMPS)
- Electromechanical speed-dependent power steering
- Seats: Driver's seat height adjustable
- Seats: Rear seat backrest
- Seats: Front sports seats with enhanced lateral support
- 12-volt power outlet in the luggage compartment
- Lashing eyes in the luggage compartment
- Electronic immobilizer
- Central locking with remote control and remote luggage compartment release



Extra equipment

- Paint finish: Magnetic Metallic
- Package: Easy Parking (Active Parking Assist with parking and exiting function (in conjunction with 8-speed automatic transmission including semi-automated vehicle guidance) - Door edge protection - Rearview camera with "Split View" technology)
- Package: Driver Assistance Package II (Drive Assist Intelligent adaptive cruise control Lane keeping assist Traffic jam assist with Stop&Go Traffic sign recognition Wrong-way driver warning radio Evasive steering assist Distance display and distance warning Driver drowsiness detection High beam assist (in conjunction with adaptive LED matrix headlights with glare-free high beam assist) Blind spot assist with cross traffic alert including emergency braking function (when reversing out of parking spaces) and trailer recognition Rear view camera with split view Electrically folding exterior mirrors with surround view)
- Package: Winter (heated windscreen - heated steering wheel - individually and variably heated front seats)
- Safety partition net for luggage compartment
- Navigation: Ford SYNC 3 with AppLink, 8" touchscreen and DAB/DAB+ (Ford navigation system with AppLink, 8" touchscreen (20.3 cm screen diagonal) - 6 speakers - Android Auto and Apple CarPlay - Bluetooth hands-free system and audio streaming - Steering wheel controls - Radio player - USB port - Voice control via audio and telephone - Acoustic and visual route guidance, dynamic navigation with enhanced traffic information system, lane guidance and road map for Europe)
- Package: Comfort (Air conditioning with automatic temperature control, separately adjustable for driver and front passenger side (2-zone automatic climate control) - Ford Key Free System (keyless locking/unlocking) including Ford Power Start function (keyless start) - Windscreen wipers with rain sensor, variable sensitivity adjustment - Interior mirror, automatically dimming - Exterior mirrors electrically folding and with ambient lighting)
- Side windows from the 2nd row of seats and rear window, dark tinted.

Brief expert findings

Documents submitted	At the time of the inspection, the vehicle registration certificate Part 2 (title) was available, but the vehicle registration certificate Part 1 (document) was not. (Copy)
VIN comparison	The vehicle identification number (VIN) was read from the vehicle and its conformity with the submitted documents was confirmed by the undersigned during the inspection.
Inspection	The inspection conditions were sufficient for the assessment of the vehicle. Lifting equipment and/or a pit were available for examining the vehicle.
Test drive	No test drive/shunting maneuver was carried out during the inspection of the vehicle.
Engine function test	An engine test run was performed.

Value reducing factors

No.	Component group	Description
1	Equipment	Tirefit filler - Expired - Replace
2	Side panel - rear left side	Side panel - Scratch(es) - Smart repair
3	Engine	Engine - Leaking - Perform diagnosis
4	Rear bumper	Rear bumper - Scratch(es) - Paint
5	Mudguard - left side	Mudguard - left side - Scratch(es) - Paint
6	Front bumper	Front bumper - Deformed - Repair and paint

Wear and tear

No.	Component group	Description
1	Bonnet	Bonnet - Stone chips - No deduction

The vehicle shows signs of wear and tear commensurate with its age and use.



Order/Scope of Order

An order was placed to prepare a sales report for the described vehicle. This report includes the following:

- Description of key vehicle information
- Documentation of equipment features
(Delivery by third-party service providers)
- Documentation of damage, defects, missing parts
- Documentation of prior damage, unrepaired prior damage, repainting
- A brief visual or functional inspection of the equipment details, if possible.
(Functional testing of driver assistance systems is not included in the scope of services!)
- a photographic documentation of the vehicle

Basis for the order

This product is based on the guidelines for vehicle returns and valuations published by Alphabet Fleet GmbH. The expert makes the specific findings in each individual case objectively, within the framework of the prescribed standards, based on their own expertise.

The vehicle inspection takes place in a fully assembled, unassembled state.

Damage or defects that can only be detected during disassembly/diagnostic work or through further investigation remain within the realm of prognostic risk. An increased risk exists due to concealed defects caused by fraudulent misrepresentation and which were not identifiable by the expert.

Damage or defects resulting from normal use or wear and tear of the vehicle will be accepted in accordance with the applicable standard.

There was no explicit identification or monetary consideration of the expected features within the product.

Features which, in their nature and extent, slightly exceed normal use but do not constitute unacceptable damage, will be documented and indicated as signs of wear, if applicable.

Damage or defects that, according to the applicable standard, can no longer be attributed to normal use or wear and tear are listed under "Value Reducing Factors" in the product description.

Depending on the product specification, a monetary ID can be provided. If this takes place, the costs can be 100% d or pro rata depending on the vehicle's age and mileage.

Previous damages

No apparent prior damage that had been repaired could be found on the vehicle.

Comments

- Winterradsatz ist kein Bestandteil des Auslieferungsumfangs.



Figure 1: Diagonal front (left)



Figure 2: Diagonal front (right)



Figure 3: Diagonal rear (left)



Figure 4: Diagonal rear (right)

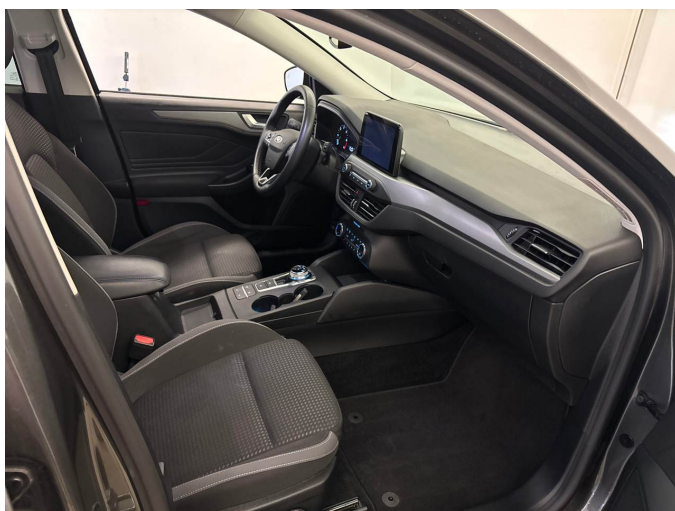


Figure 5: Interior - front



Figure 6: Interior - rear



Figure 7: Instrument cluster



Figure 8: Instrument panel



Figure 9: Interior 360° view



Figure 10: Cargo area



Figure 11: VIN



Figure 12: Mounted tyres



Figure 13: Documents



Figure 14: Additional tyres



Figure 15: Navigation



Figure 16: Misc.



Figure 17: Misc.



Figure 18: Misc.



Figure 19: Misc.



Figure 20: Misc.



Figure 21: Misc.



Figure 22: Misc.



Figure 23: Misc.



Figure 24: Misc.



Figure 25: Misc.



Figure 26: Misc.



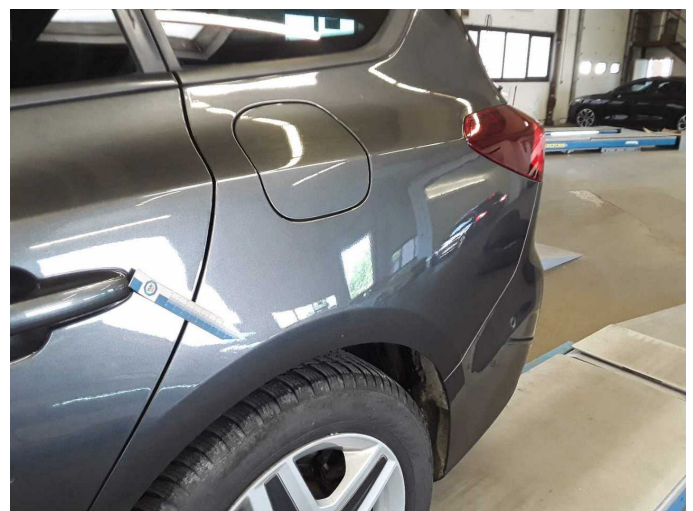
Figure 27: Misc.



Figure 28: Misc.



Damage 1: Equipment: Tirefit filler - Expired - Replace



Damage 2: Side panel - rear left side: Side panel - Scratch(es) - Smart repair



Damage 2: Side panel - rear left side: Side panel - Scratch(es) - Smart repair



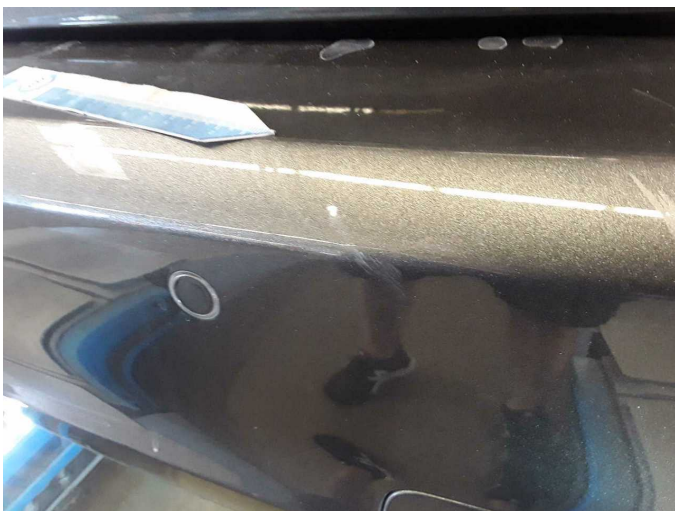
Damage 2: Side panel - rear left side: Side panel - Scratch(es) - Smart repair



Damage 3: Engine: Engine - Leaking - Perform diagnosis



Damage 4: Rear bumper: Rear bumper - Scratch(es) - Paint



Damage 4: Rear bumper: Rear bumper - Scratch(es) - Paint



Damage 4: Rear bumper: Rear bumper - Scratch(es) - Paint



Damage 4: Rear bumper: Rear bumper - Scratch(es) - Paint



Damage 5: Mudguard - left side: Mudguard - left side - Scratch(es) - Paint



Damage 5: Mudguard - left side: Mudguard - left side - Scratch(es) - Paint



Damage 6: Front bumper: Front bumper - Deformed - Repair and paint



Damage 6: Front bumper: Front bumper - Deformed - Repair and paint



Damage 6: Front bumper: Front bumper - Deformed - Repair and paint



Damage 6: Front bumper: Front bumper - Deformed - Repair and paint



Wear and tear 1: Bonnet: Bonnet - Stone chips - No deduction



Wear and tear 1: Bonnet: Bonnet - Stone chips - No deduction



Wartungshistorie

(gemäß Auftraggeber Informationen)

Fahrgestellnummer: WF0PXXGCHPNY33419
Hersteller / Modell: FORD FORD Focus Turnier 1.5 EcoBlue Start-Stopp-System Aut.
COOL&CONNECT

Datum	KM-Stand	Beschreibung
26.09.2025	93.379	Bremsflüssigkeit; Bremsflüssigkeit ern; Motoröl b. Wartung; Ölfilter ern; Regelwartungsdienst; Wartung Sonstiges
16.05.2025	82.288	Bremsklötze hinten
06.05.2025	80.934	HU + AU
30.09.2024	64.036	Kraftstofffilter ern; Luftfiltereinsatz ern; Motoröl b. Wartung; Ölfilter ern; Regelwartungsdienst; Wartung Sonstiges
12.12.2023	32.071	Motoröl b. Wartung; Ölfilter ern; Regelwartungsdienst; Wartung Sonstiges