

Expertise

Protocol number: 45968419
Order No. / Reference: 26496281
Inspection date: 16 Jun 2026

Manufacturer: Volkswagen

Model: Golf Variant 2.0 TDI SCR DSG Life

VIN: WVVZZZCD9PW522150



Vehicle details

Manufacturer / Type / Model / Equipment

Volkswagen Golf Variant 2.0 TDI SCR DSG Life

Vehicle Identification number	WVVZZZCD9PW522150
Mileage (Read)	142,644 km
First registration	25 Jan 2023
Number of holders	2
Next periodical technical inspection (Report on hand)	04/2028

Power / Engine displacement	110 kw / 1,968 ccm
------------------------------------	--------------------

Fuel type / Cylinder	Diesel / 4
-----------------------------	------------

Gearbox / Number of gears	Automatic / 7
----------------------------------	---------------

Type of drive	Front drive
----------------------	-------------

Type of vehicle	Station wagon
------------------------	---------------

Colour / colour code	Uranograu
-----------------------------	-----------

Doors / Seats	5 / 5
----------------------	-------

Upholstery type	Cloth
------------------------	-------

Colour of upholstery	Black-Anthracite
-----------------------------	------------------

Re-import	no
------------------	----

readiness to drive	Roadworthy
---------------------------	------------



Vehicle details

Maintenance booklet / proof	digital proof / complete	Next maintenance in	11,800 km
Last service on / at	04/2026 at 139,129 km		
Key is / should be	2 / 2	FZG documents	ZB#2 (B) was available (copy), ZB#1 (S) was not available.
		Letter No.	GP953494
Previous damage / Accident	Detectable	Repainting	Detectable
Inspection conditions	sufficient	Lifting equipment / pit	yes
Test drive	Not performed	Engine function test	Performed
readiness to drive	Roadworthy		
Manufacturer key number/ type code number	0603 / CNN 01840		
Emission standard	EURO6;WLTP;AP;PI/CI; M, N1 I	fine dust sticker	
Permitted total weight	2,060 kg	Empty weight	

Tyres

Mounted tyres

#	Tyre size	Type of tyre	Manufacturer	Tread depth
1)	205/50 R17 93W	Winter tyres on Light alloy	Continental	5mm / 5mm
2)	205/50 R17 93W	Winter tyres on Light alloy	Continental	5mm / 5mm

Additional tyres

#	Tyre size	Type of tyre	Manufacturer	Tread depth
1)	205/55 R16 91V	Summer tyres on Light alloy	Falken	4mm / 4mm
2)	205/55 R16 91V	Summer tyres on Light alloy	Falken	4mm / 4mm

Replacement

Typ	Tyre size	Type of tyre	Manufacturer	Tread depth
Tirefit		Expiration date 10/2026		

Legend: Tread depth information for the left tire is listed first, for the right tire it is listed second on the axle in the direction of travel.

TÜV SÜD Auto Partner GmbH
Wiesenring 2
04159 Leipzig

Inspection location
Hartmann Compound Professionals
Arnoldschacht 9-11
44894 Bochum



Equipment



Standard equipment

- Airbag for driver and front passenger (with passenger airbag deactivation)
- Ambient lighting
- Electrically adjustable and heated exterior mirrors with memory function and passenger-side mirror lowering function.
- third brake light
- black roof rails
- Decorative inlays "Nature Cross Brushed" (for instrument panel and front door trim)
- Diesel particulate filter and SCR catalyst
- Digital Cockpit Pro, multicolor (various info profiles selectable)
- Electronic differential lock XDS
- Electronic stability program and electromechanical brake booster (Anti-lock braking system with brake assist - Electronic brake force distribution - Traction control - Electronic differential lock - Engine drag torque control - Trailer stabilization)
- Pedestrian protection measures expanded
- Speed limiter (in conjunction with online services)
- Rear window heated
- Rear window wiper with intermittent function
- Rear headrests (3)
- Front headrests (safety-optimized)
- LED reading lights at the front (2) and 2 at the rear
- LED headlights
- Dynamic headlight range control
- Fatigue detection (detects signs of possible driver fatigue based on characteristic steering behavior, time of day and driving duration and issues a visual and audible warning)
- Emergency call service (no registration required, service is activated upon delivery)
- Package: Seating comfort package (2 USB-C ports in the front, 2 USB-C charging ports on the rear center console; charging power up to 45 W - front center armrest adjustable in height and length - front seats with height adjustment)
- Tire pressure monitoring system (passive)
- Wheels: Alloy wheels (4) "Norfolk" 7 J x 16 (tires 205/55 R 16)
- Wheels: Tire Mobility Set (12-volt compressor and tire sealant)
- Rear bench seat undivided, backrest asymmetrically split and foldable with center armrest
- Electromechanical power steering (speed-dependent control)
- Seat belts: Three-point automatic seat belts for the outer rear seats
- Seat covers in "Life" fabric
- Lane keeping assistant "Lane Assist"
- Start-stop system (with brake energy recuperation)
- Bumpers in body color
- Ambient lighting with logo projection
- Green thermal insulation glazing, sides and rear
- Airbags: Front and rear head airbags, front side airbags, center airbag
- App-Connect (selected apps for Android smartphones and Apple iPhones can be displayed and operated on the touchscreen of the radio or navigation system)
- Exterior mirror housings and door handles in body color
- Car2X (Using the WLANp ITS G5 standard, all Car2X-enabled vehicles and traffic systems such as traffic lights can transmit data at high speed without using the mobile network. This works over a distance of around 800 meters - enough to warn of an invisible traffic jam.)
- Parking aid (acoustic warning signals for obstacles in the front and rear area)
- Electronic parking brake including auto-hold function
- Automatic headlight control, with LED daytime running lights (as well as welcome and farewell lights)
- Electric windows, front and rear
- Windscreen made of laminated safety glass, heat and sound insulating
- luggage compartment cover
- Transmission: 7-speed DSG (7-speed dual-clutch transmission DSG)
- ISOFIX mounting points (for child seats on the outer rear seats and on the front passenger seat, i-Size compatible)
- Paint finish: Solid
- LED taillights
- Steering wheel: Multifunction leather steering wheel with paddle shifters
- Non-smoking version (storage compartment and 12V socket at the front)
- Emergency braking assistant "Front Assist" with pedestrian and cyclist detection (detects critical distance situations to other vehicles and helps to shorten the stopping distance - warns the driver visually and audibly in dangerous situations as well as with a preventive braking jolt with pedestrian and cyclist detection - also reacts to pedestrians and cyclists)
- Radio "Composition" (touchscreen with 21 cm screen diagonal - 4+1 speakers - output power 4 x 20 watts - FM radio reception - dual tuner with phase diversity for the best possible radio reception - Radio Data System (RDS) - MP3 playback - USB-C interface with Apple compatibility - DAB+ digital radio reception - telephone interface (hands-free system, Bluetooth audio))
- Keyless start system without safe locking
- Seat belts: Three-point automatic seat belt for the middle rear seat
- Seat belts: Three-point automatic seat belts at the front with height adjustment and belt tensioner
- Seats: Comfort seats in the front (with height adjustment and lumbar support)
- 12-volt power outlet in the luggage compartment
- Telephone interface with inductive charging function
- Electronic immobilizer



- Central locking without safe locking, with remote control and 2 remote folding keys

Extra equipment

- Package: Business Premium incl. navigation system (DSG) (6+1 speakers, App-Connect incl. App-Connect Wireless for Apple CarPlay, Android Auto, automatic distance control, adaptive cruise control (ACC) stop/go, speed limiter, emergency brake, pedestrian detection, travel assist, lane assist, emergency assist, leather multifunction steering wheel, heated, with shift paddles, multifunction camera, Discover Media navigation incl. streaming & internet (MP3, touchscreen, USB), cargo net partition, radio, heated windshield washer system, voice control, telephone interface, Comfort with inductive charging, textile floor mats, traffic sign recognition, heated front seats)
- Air conditioning system "Air Care Climatronic" (with active combination filter, rear controls and 3-zone temperature control)
- Towbar, foldable with electric release
- Wheels: Winter wheels (additional), alloy, "Nottingham" 6.5 J x 17 (4 alloy wheels 6.5 J x 17 - wheel wrench and jack - winter tires 205/50 R 17 H)

Brief expert findings

Documents submitted	At the time of the inspection, the vehicle registration certificate Part 2 (title) was available, but the vehicle registration certificate Part 1 (document) was not. (Copy)
VIN comparison	The vehicle identification number (VIN) was read from the vehicle and its conformity with the submitted documents was confirmed by the undersigned during the inspection.
Inspection	The inspection conditions were sufficient for the assessment of the vehicle. Lifting equipment and/or a pit were available for examining the vehicle.
Test drive	No test drive/shunting maneuver was carried out during the inspection of the vehicle.
Engine function test	An engine test run was performed.
readiness to drive	The vehicle was roadworthy at the time of inspection.

Value reducing factors

No.	Component group	Description
1	Trim / covers	Boot lid - interior trim - Scratch(es) - Loss in value
2	Sill - left side	Sill - Dent / paintcoat damage - Smart repair
3	Bonnet	Emblem - Damaged - Replace
4	Door - rear right side	Door - Scratch(es) - Paint
5	Door - front right side	Door - Scratched - Paint
6	Rear bumper	Rear bumper - Scratch(es) - Paint

Wear and tear

No.	Component group	Description
1	Bonnet	Bonnet - Stone chips - No deduction
2	Front bumper	Front bumper - Stone chips - No deduction
3	Vehicle glazing	Windscreen - Stone chips - No deduction

The vehicle shows signs of wear and tear commensurate with its age and use.

Previous damages

No.	Previous damage	Extent of damage (Net)
1	Side - left, Provided by user / customer, from 10 Jan 2025	4.751,34 €



Repainting

No. Repainting

1 Mudguard - left side, Door - rear left side, Professionally carried out, Invoice of repair done Non-existent

Paint coat thickness measurement

Mudguard - left side	202 µm	Door - rear left side	173 µm
----------------------	--------	-----------------------	--------

Order/Scope of Order

An order was placed to prepare a sales report for the described vehicle. This report includes the following:

- Description of key vehicle information
- Documentation of equipment features
(*Delivery by third-party service providers*)
- Documentation of damage, defects, missing parts
- Documentation of prior damage, unrepaired prior damage, repainting
- A brief visual or functional inspection of the equipment details, if possible.
(*Functional testing of driver assistance systems is not included in the scope of services!*)
- a photographic documentation of the vehicle

Basis for the order

This product is based on the guidelines for vehicle returns and valuations published by Alphabet Fleet GmbH. The expert makes the specific findings in each individual case objectively, within the framework of the prescribed standards, based on their own expertise.

The vehicle inspection takes place in a fully assembled, unassembled state.

Damage or defects that can only be detected during disassembly/diagnostic work or through further investigation remain within the realm of prognostic risk. An increased risk exists due to concealed defects caused by fraudulent misrepresentation and which were not identifiable by the expert.

Damage or defects resulting from normal use or wear and tear of the vehicle will be accepted in accordance with the applicable standard.

There was no explicit identification or monetary consideration of the expected features within the product.

Features which, in their nature and extent, slightly exceed normal use but do not constitute unacceptable damage, will be documented and indicated as signs of wear, if applicable.

Damage or defects that, according to the applicable standard, can no longer be attributed to normal use or wear and tear are listed under "Value Reducing Factors" in the product description.

Depending on the product specification, a monetary ID can be provided. If this takes place, the costs can be 100% d or pro rata depending on the vehicle's age and mileage.

Previous damages

According to available information previous damages were repaired at the vehicle. Traces of repairs, which allow conclusions about the area of repair, were not recognizable during the inspection.



Figure 1: Diagonal front (left)



Figure 2: Diagonal front (right)



Figure 3: Diagonal rear (left)



Figure 4: Diagonal rear (right)

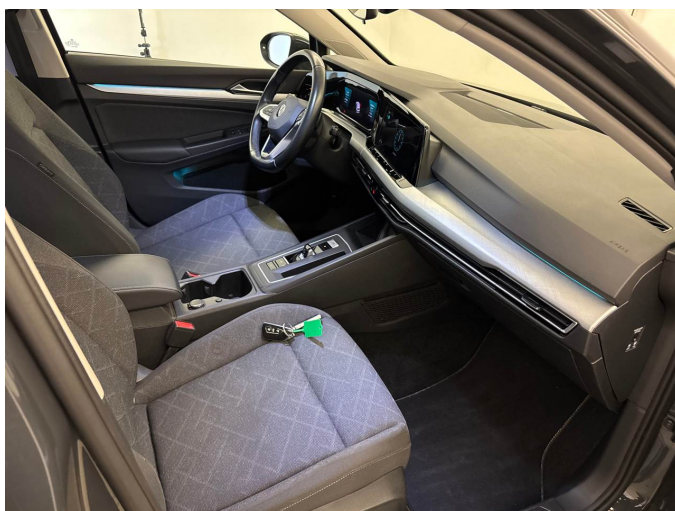


Figure 5: Interior - front

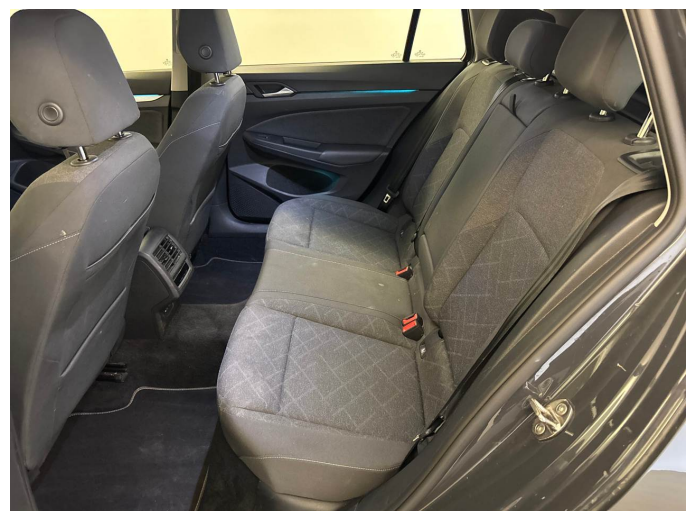


Figure 6: Interior - rear



Figure 7: Instrument cluster



Figure 8: Instrument panel

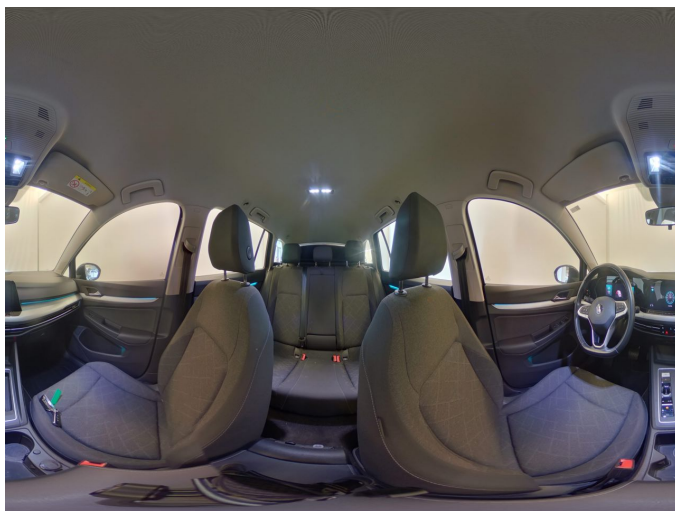


Figure 9: Interior 360° view



Figure 10: Cargo area

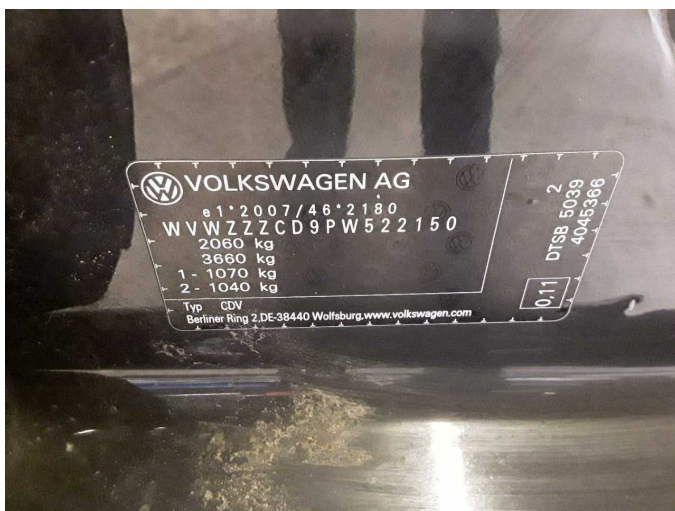


Figure 11: VIN



Figure 12: Mounted tyres



Figure 13: Documents



Figure 14: Documents



Figure 15: Additional tyres



Figure 16: Navigation



Figure 17: Misc.

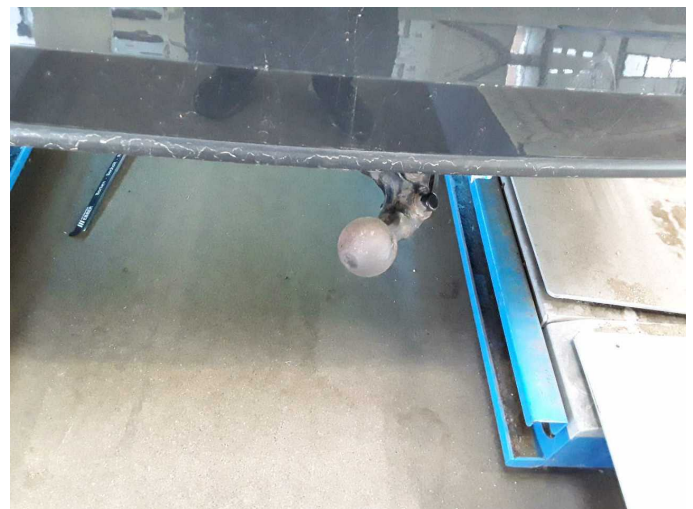


Figure 18: Misc.



Figure 19: Misc.



Figure 20: Misc.



Figure 21: Misc.



Figure 22: Misc.



Figure 23: Misc.



Figure 24: Misc.



Figure 25: Misc.



Figure 26: Misc.



Damage 1: Trim / covers: Boot lid - interior trim - Scratch(es) - Loss in value



Damage 1: Trim / covers: Boot lid - interior trim - Scratch(es) - Loss in value



Damage 2: Sill - left side: Sill - Dent / paintcoat damage - Smart repair



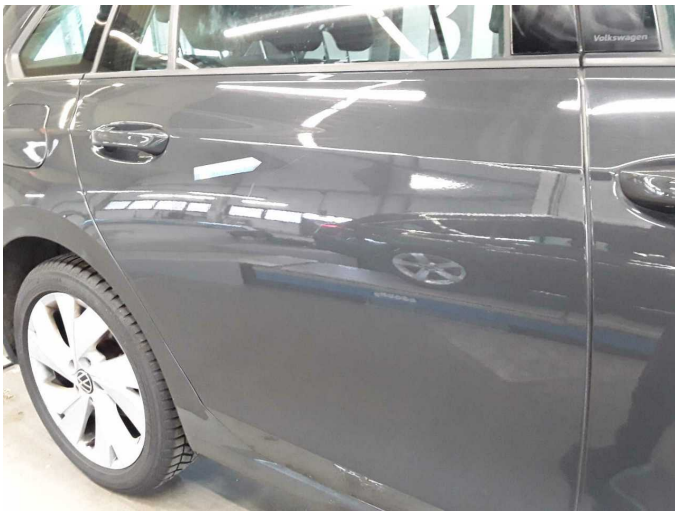
Damage 2: Sill - left side: Sill - Dent / paintcoat damage - Smart repair



Damage 3: Bonnet: Emblem - Damaged - Replace



Damage 3: Bonnet: Emblem - Damaged - Replace



Damage 4: Door - rear right side: Door - Scratch(es) - Paint



Damage 4: Door - rear right side: Door - Scratch(es) - Paint



Damage 4: Door - rear right side: Door - Scratch(es) - Paint



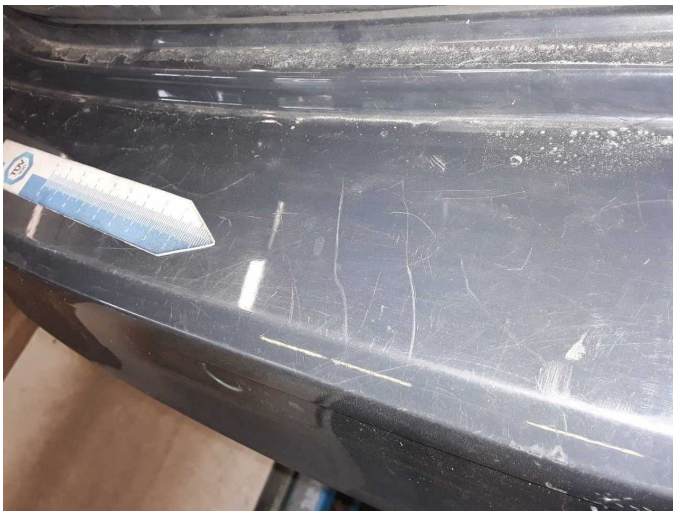
Damage 5: Door - front right side: Door - Scratched - Paint



Damage 5: Door - front right side: Door - Scratched - Paint



Damage 6: Rear bumper: Rear bumper - Scratch(es) - Paint



Damage 6: Rear bumper: Rear bumper - Scratch(es) - Paint



Damage 6: Rear bumper: Rear bumper - Scratch(es) - Paint



Wear and tear 1: Bonnet: Bonnet - Stone chips - No deduction



Wear and tear 1: Bonnet: Bonnet - Stone chips - No deduction



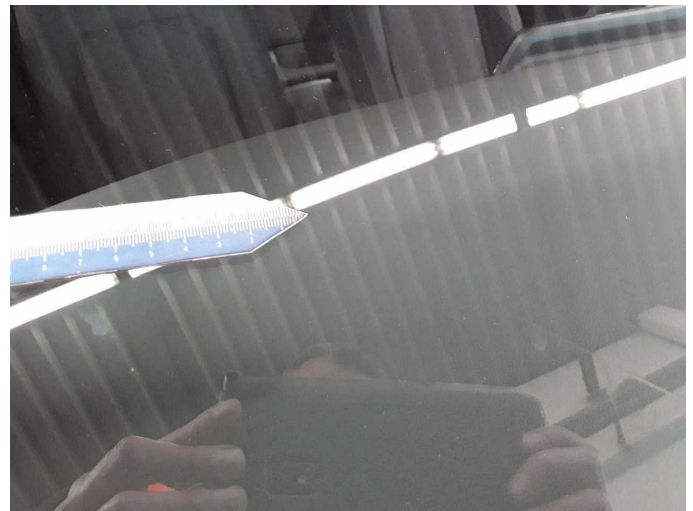
Wear and tear 2: Front bumper: Front bumper - Stone chips - No deduction



Wear and tear 2: Front bumper: Front bumper - Stone chips - No deduction



Wear and tear 3: Vehicle glazing: Windscreen - Stone chips - No deduction



Wear and tear 3: Vehicle glazing: Windscreen - Stone chips - No deduction



Repainting 1: Mudguard - left side, Door - rear left side



Repainting 1: Mudguard - left side, Door - rear left side



Repainting 1: Mudguard - left side, Door - rear left side



Repainting 1: Mudguard - left side, Door - rear left side



Wartungshistorie

(gemäß Auftraggeber Informationen)

Fahrgestellnummer: WVVZZZCD9PW522150

Hersteller / Modell: VOLKSWAGEN VW Golf Variant 2.0 TDI SCR DSG Life

Datum	KM-Stand	Beschreibung
14.04.2026	139.129	AU
10.04.2026	139.129	Regelwartungsdienst
15.12.2025	127.211	Motoröl b. Wartung; Ölfilter ern; Ölwechsel; Wartung Sonstiges
28.07.2025	106.100	Bremse Sonstiges; Bremsklötze vorne; Getriebeöl ern/prüfen; Regelwartungsdienst; Wartung Sonstiges
07.07.2025	94.835	Kraftstofffilter ern; Luftfiltereinsatz ern; Motoröl b. Wartung; Ölfilter ern; Ölwechsel; Wartung Sonstiges
24.12.2024	75.703	Bremsflüssigkeit; Bremsflüssigkeit ern; Motoröl b. Wartung; Ölfilter ern; Regelwartungsdienst; Wartung Sonstiges
17.05.2024	38.833	Motoröl b. Wartung; Ölfilter ern; Regelwartungsdienst; Wartung Sonstiges