

Expertise

Protocol number: 46291022
Order No. / Reference: 26154508
Inspection date: 22 Jun 2026

Manufacturer: Mercedes-Benz

Model: Vito 116 CDI Tourer Extralang Aut. PRO

VIN: W1VVLGFZ4T4567944



Vehicle details

Manufacturer / Type / Model / Equipment

Mercedes-Benz Vito 116 CDI Tourer Extralang Aut. PRO

Vehicle Identification number	W1VVLGFZ4T4567944
Mileage (Read)	11,050 km
First registration	24 Sept 2025
Number of holders	1
Next periodical technical inspection	09/2026 (Report not on hand)

Power / Engine displacement	120 kw / 1,950 ccm
------------------------------------	--------------------

Fuel type / Cylinder	Diesel / 4
-----------------------------	------------

Gearbox / Number of gears	Automatic / 9
----------------------------------	---------------

Type of drive	Rear drive
----------------------	------------

Type of vehicle	Van
------------------------	-----

Colour / colour code	Grafitgrau Dunkel
-----------------------------	-------------------

Doors / Seats	5 / 9
----------------------	-------

Upholstery type	Cloth
------------------------	-------

Colour of upholstery	Black-Grey
-----------------------------	------------

Re-import	no
------------------	----

Type of use	rental car
--------------------	------------

readiness to drive	Roadworthy
---------------------------	------------



Vehicle details

Maintenance booklet / proof	digital proof / complete	Next maintenance in	437 Tag(e)
Key is / should be	2 / 2	FZG documents	ZB#2 (B) was available (copy), ZB#1 (S) was not available.
		Letter No.	HP673242
Previous damage / Accident	None detectable	Repainting	None detectable
Inspection conditions	sufficient	Lifting equipment / pit	yes
Test drive	Not performed	Engine function test	Performed
readiness to drive	Roadworthy		
Manufacturer key number/ type code number	2222 / ABB 07004		
Emission standard	EURO6;WLTP;EB;PI/CI;M, N1, N2	fine dust sticker	
Permitted total weight	3,100 kg	Empty weight	

Tyres

Mounted tyres

#	Tyre size	Type of tyre	Manufacturer	Tread depth
1)	225/55 R17 109H	All-season tyres on Steel rim with wheel cover	Goodyear	7mm / 7mm
2)	225/55 R17 109H	All-season tyres on Steel rim with wheel cover	Goodyear	7mm / 7mm

Legend: Tread depth information for the left tire is listed first, for the right tire it is listed second on the axle in the direction of travel.

TÜV SÜD Auto Partner GmbH
Wiesenring 2
04159 Leipzig

Inspection location
ARS Altmann AG Automobillogistik
Lilienthalstraße 2
29693 Hodenhagen



Equipment



Standard equipment

- ABS, ESP, ASR, EBV, BAS (Anti-lock Braking System (ABS) - Electronic Stability Program (ESP) - Traction Control (ASR) - Electronic Brakeforce Distribution (EBV) - Brake Assist (BAS))
- Airbag: Thorax-pelvis-sidebag for driver
- Airbag: Windowbag for driver and front passenger
- ATTENTION ASSIST (ATTENTION ASSIST can assist the driver on long, monotonous journeys by monitoring attention. If signs of fatigue or increasing inattention are detected, it suggests a break.)
- Battery: fleece battery 12 V / 92 Ah
- Hill start assist
- third brake light
- COC documents
- Roof cladding
- Electronic tachometer
- Driving light assistant (automatically switching on driving lights)
- Window in rear door/taillgate (with wiper/washer system)
- Front left window fixed in SW/ cargo area sliding door
- Electric window regulator driver/passenger (with anti-pinch protection, quick lowering and raising)
- Generator management (Generator management helps reduce fuel consumption and CO2 emissions. The generator is switched off and the vehicle's electrical system is powered by the battery when it is sufficiently charged. This relieves the engine of the burden of charging the battery, for example, during acceleration. - When braking and during coasting downhill, the generator is switched on and the vehicle's kinetic energy is recuperated to charge the battery.)
- Interior mirror (rearview mirror)
- Intelligent speed assistant
- Child safety locks on doors in the passenger compartment
- Instrument cluster with color display
- Communication module (LTE) for digital services
- Large fuel tank, approx. 70 liters
- Paint finish: Solid color paint
- Steering wheel adjustable for tilt and height
- Headlight range control
- Navigation accessories: Live Traffic Information
- Package: Aerodynamics
- Breakdown management
- Radio: Digital Radio DAB
- Radio accessories: 2-way speakers front + rear.
- Full wheel cover
- Tires: Tires without specified make
- Tires: Premium protection tires (3 years)
- Tire pressure monitoring (on front and rear axles (wireless))
- Wheels: Premium complete wheel protection (3 years)
- Wheels: Steel rims 6.5 J x 17
- Sliding door: Active stop
- Crosswind Assist
- Seats: 3-seater bench in the 1st row of the passenger compartment (with individual seat elements - folding outer seat)
- Screw-in towing eye front/rear
- Passenger side airbag
- Driver's side airbag
- Airbag: Thorax airbag - Pelvis side airbag for front passenger
- Active Lane Keeping Assist
- Increased load capacity to 3,100 kg
- Electrically adjustable and heated exterior mirrors, left and right
- Outdoor temperature display
- Fixing points in the roof frame
- Brake assist, active
- Brake lights, adaptive
- Front cupholder
- Diesel particulate filter and SCR
- Entry grab handle for the cargo area sliding door
- Chassis: Comfort chassis
- Misfueling protection
- Left/right window in SW/ Cargo area sliding door
- Front right window fixed in SW/ cargo area sliding door
- electric parking brake
- Generator 14 V / 200 A
- Speed limit 210 km/h
- Transmission: 9G-TRONIC
- Seatbelt warning device for front passenger seat
- Seatbelt warning device for driver's seat
- Grab handle in the rear
- Lockable glove box
- Boot lid
- HOLD function
- Interior lights in the rear
- Interior trim, high-end finish
- Passive child detection in the vehicle
- Tempmatic controlled air conditioning
- Comfort closing (comfort opening and closing of windows)
- Headrests (2), front
- Plastic floor TPO passenger compartment
- leather steering wheel
- Steering wheel: Multifunction steering wheel
- Mercedes-Benz emergency call system
- Navigation: Navigation pre-installation
- Package: BlueEFFICIENCY (Efficiency Package)
- Upholstery: Caluma fabric, black
- Radio: MBUX multimedia system (high-resolution 10.25-inch touchscreen, Bluetooth interface with hands-free function, USB-C port, digital radio (DAB), setup of up to 7 profiles via Mercedes me, voice assistant with seat-specific voice recognition, technical requirements for over-the-air updates, satellite view, social navigation, dynamic offboard routing* (additional route alternatives), online music)
- Headlights: halogen technology
- Sliding door on the right, cargo/passenger compartment



- Seats: Passenger seat cushion depth adjustment
- Start-stop function
- Blind Spot Assist
- Ambient lighting in the exterior mirrors
- First aid kit
- Warm air duct to the passenger compartment
- ASSYST maintenance interval indicator
- Heat-insulating glass
- Auxiliary heater, electric

- electromechanical power steering
- Seats: 3-seater bench, 2nd row
- Seats: Rear seat mounting with quick-release fasteners, 2 rows of seats
- Seats: Driver's seat cushion depth adjustment
- 12V socket
- Ambient lighting tailgate
- Updates to the intelligent speed assistant
- Pre-installation for Remote Services Plus
- Warning triangle
- Immobiliser
- Central locking with radio remote control
- Car registration

Extra equipment

- Towing capacity 2500 kg
- Tinted rear windows, black glass
- Semi-automatic air conditioning, TEMPATIC in the rear
- Navigation
- Package: Winter Package (heated windscreen - heated seats for driver and front passenger - pockets on driver and front passenger seatbacks - heated multifunction steering wheel)
- Seat: Lumbar support driver's seat
- Seats: Comfort driver's seat
- Cruise control

- Towbar (detachable ball head)
- Generator 14 V / 250 A
- Paint finish: Metallic
- Package: Parking package with reversing camera
- Tires: All-season tires
- Electric suction fan, power level 5
- Sliding door on the left (cargo area)
- Key: Multi-button radio remote control
- Seats: Passenger seat, two-seater
- Bumpers painted in body color
- Traffic Sign Assistant

Brief expert findings

Documents submitted	At the time of the inspection, the vehicle registration certificate Part 2 (title) was available, but the vehicle registration certificate Part 1 (document) was not. (Copy)
VIN comparison	The vehicle identification number (VIN) was read from the vehicle and its conformity with the submitted documents was confirmed by the undersigned during the inspection.
Inspection	The inspection conditions were sufficient for the assessment of the vehicle. Lifting equipment and/or a pit were available for examining the vehicle.
Test drive	No test drive/shunting maneuver was carried out during the inspection of the vehicle.
Engine function test	An engine test run was performed.
readiness to drive	The vehicle was roadworthy at the time of inspection.

Value reducing factors

No.	Component group	Description
1	Roof	Roof - dent(s) - Smooth repair work
2	Door - front right side	Door - dent(s) - Smooth repair work
3	Rear bumper	Rear bumper - Scratch(es) - Smart repair
4	Sliding door, right	Sliding door - Scratch(es) - Smart repair
5	Wing mirror - right side	Mirror housing - Scratch(es) - Replace
6	Vehicle glazing	Windscreen (Gerissen) - Stone chips - Replace



Wear and tear

No.	Component group	Description
1	Trim / covers	Boot lining - Scratch(es) - No deduction
2	Sill - right side	Sill - Scratch(es) - No deduction
3	Front bumper	Front bumper - Stone chips - No deduction
4	Bonnet	Bonnet - Stone chips - No deduction
5	Headlight	Headlight - left side - Stone chips - No deduction

The vehicle shows signs of wear and tear commensurate with its age and use.

Paint coat thickness measurement

Roof	99 µm	Roof rail - left side	107 µm
Roof rail - right side	98 µm	Boot lid / rear door	88 µm
Mudguard - left side	116 µm	Mudguard - right side	100 µm
Bonnet	105 µm	Side panel - rear left side	91 µm
Side panel - rear right side	100 µm	Door - rear left side	121 µm
Door - rear right side	110 µm	Door - front left side	115 µm
Door - front right side	109 µm		

Order/Scope of Order

An order was placed to prepare a sales report for the described vehicle. This report includes the following:

- Description of key vehicle information
- Documentation of equipment features
(*Delivery by third-party service providers*)
- Documentation of damage, defects, missing parts
- Documentation of prior damage, unrepaired prior damage, repainting
- A brief visual or functional inspection of the equipment details, if possible.
(*Functional testing of driver assistance systems is not included in the scope of services!*)
- a photographic documentation of the vehicle

Basis for the order

This product is based on the guidelines for vehicle returns and valuations of light commercial vehicles published by Alphabet Fleet Management GmbH. The expert makes the specific findings in each individual case objectively, within the framework of the prescribed standards, based on their own expertise.

The vehicle inspection takes place in a fully assembled, unassembled state.

Damage or defects that can only be detected during disassembly/diagnostic work or through further investigation remain within the realm of prognostic risk. An increased risk exists due to concealed defects caused by fraudulent misrepresentation and which were not identifiable by the expert.

Damage or defects resulting from normal use or wear and tear of the vehicle will be accepted in accordance with the applicable standard.

There was no explicit identification or monetary consideration of the expected features within the product.

Features which, in their nature and extent, slightly exceed normal use but do not constitute unacceptable damage, will be documented and indicated as signs of wear, if applicable.

Damage or defects that, according to the applicable standard, can no longer be attributed to normal use or wear and tear are listed under "Value Reducing Factors" in the product description.

Depending on the product specification, a monetary ID can be provided. If this takes place, the costs can be 100% d or pro rata depending on the vehicle's age and mileage.



Previous damages

No apparent prior damage that had been repaired could be found on the vehicle.

Comments

- Ex STAR CAR Mietfahrzeug.



Figure 1: Diagonal front (left)



Figure 2: Diagonal front (right)



Figure 3: Diagonal rear (left)



Figure 4: Diagonal rear (right)



Figure 5: Interior - front



Figure 6: Interior - rear



Figure 7: Instrument cluster



Figure 8: Instrument panel



Figure 9: Interior 360° view



Figure 10: Cargo area



Figure 11: VIN



Figure 12: Mounted tyres



Figure 13: Mounted tyres



Figure 14: Documents



Figure 15: Navigation



Figure 16: Misc.



Figure 17: Misc.



Figure 18: Misc.



Figure 19: Misc.



Figure 20: Misc.

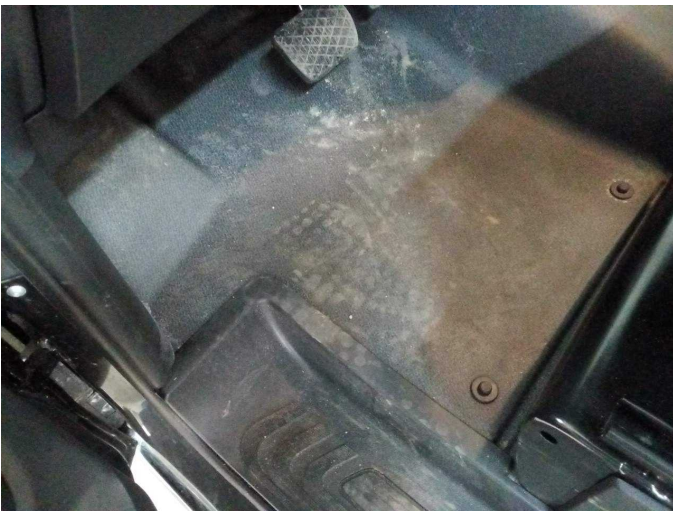


Figure 21: Misc.



Figure 22: Misc.



Figure 23: Misc.

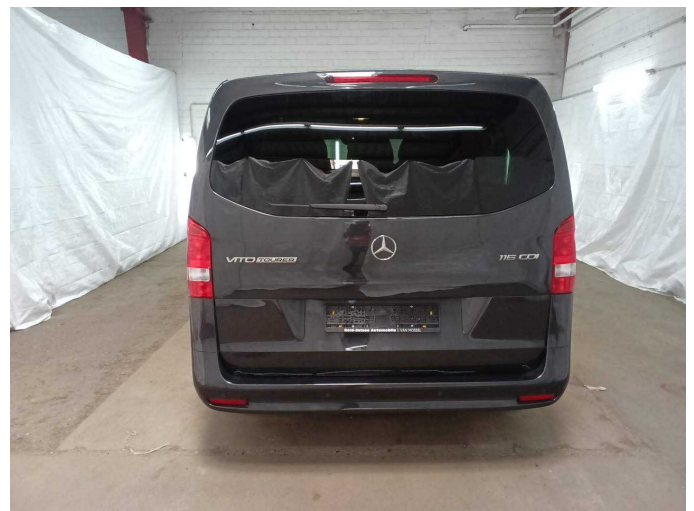


Figure 24: Misc.



Figure 25: Misc.



Figure 26: Misc.



Figure 27: Misc.



Figure 28: Misc.

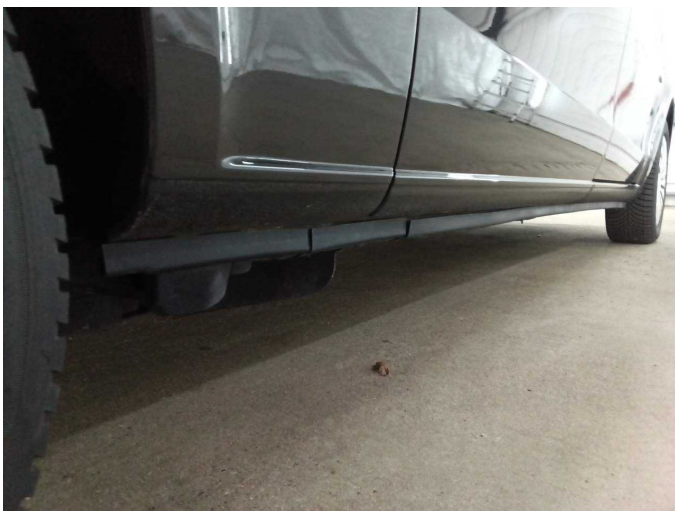


Figure 29: Misc.

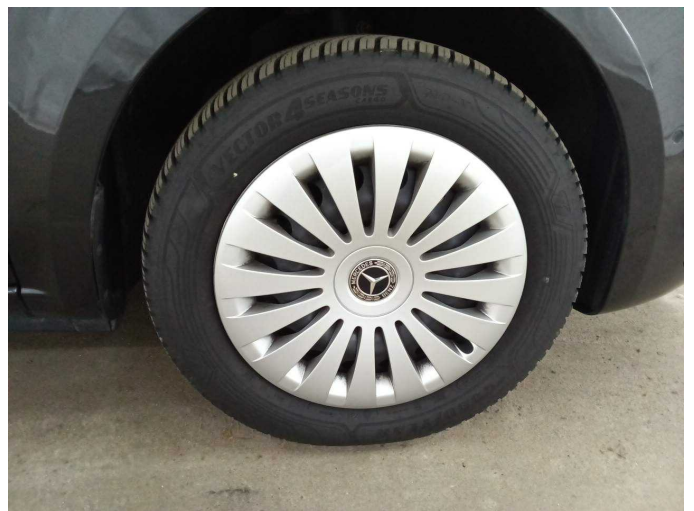


Figure 30: Misc.



Figure 31: Misc.



Figure 32: Misc.



Figure 33: Misc.



Figure 34: Misc.

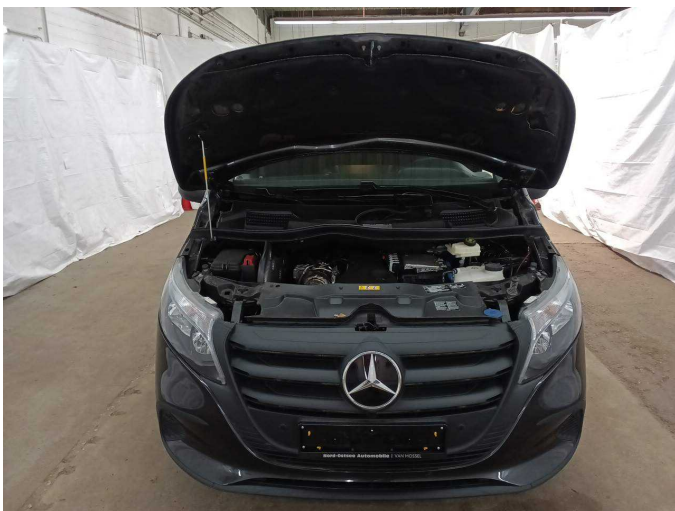


Figure 35: Misc.



Figure 36: Misc.



Figure 37: Misc.



Figure 38: Misc.

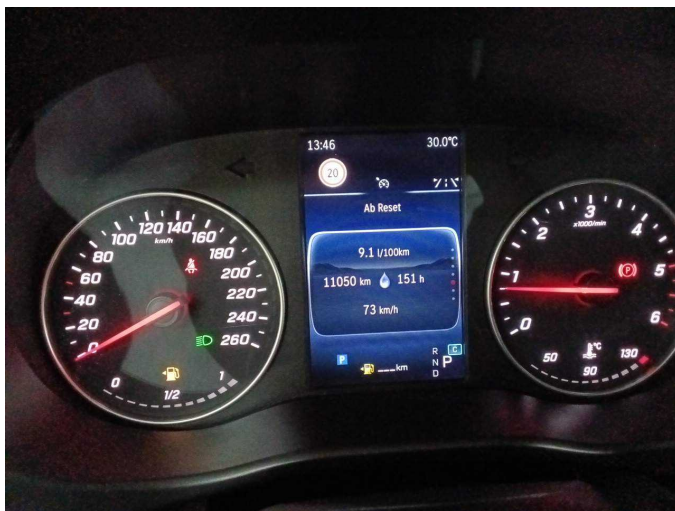
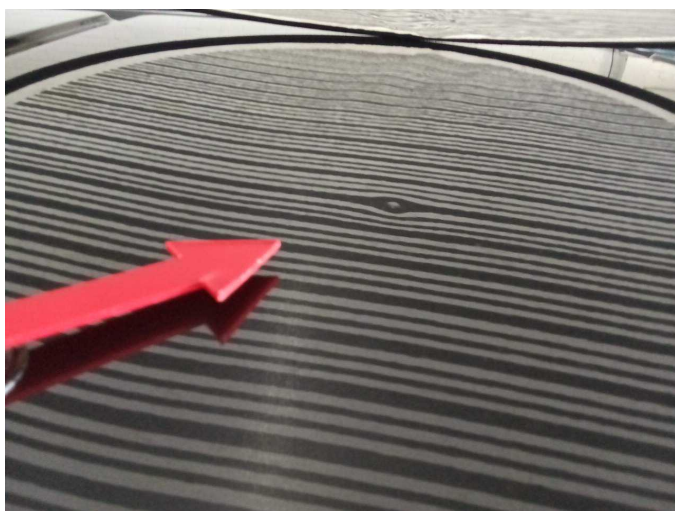


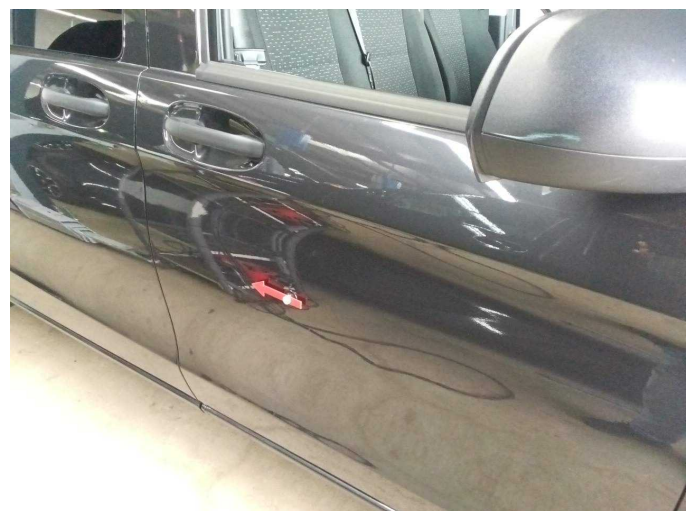
Figure 39: Misc.



Damage 1: Roof: Roof - dent(s) - Smooth repair work



Damage 1: Roof: Roof - dent(s) - Smooth repair work



Damage 2: Door - front right side: Door - dent(s) - Smooth repair work



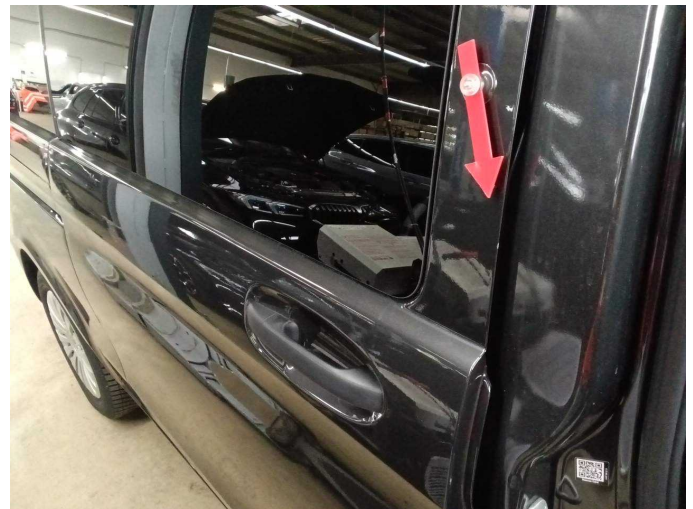
Damage 2: Door - front right side: Door - dent(s) - Smooth repair work



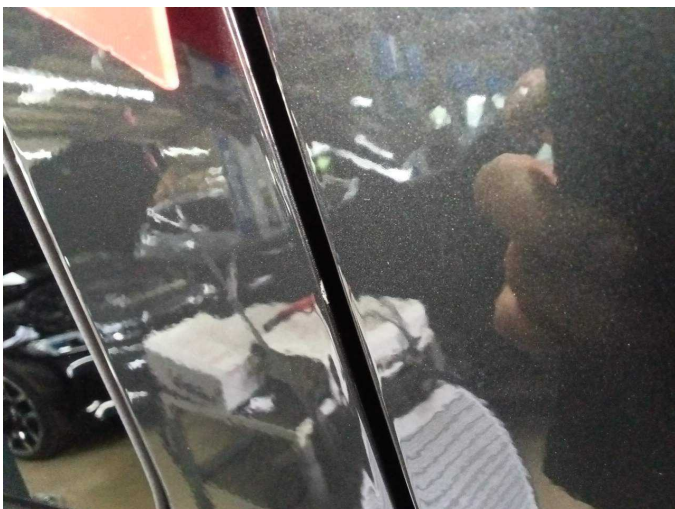
Damage 3: Rear bumper: Rear bumper - Scratch(es) - Smart repair



Damage 3: Rear bumper: Rear bumper - Scratch(es) - Smart repair



Damage 4: Sliding door, right: Sliding door - Scratch(es) - Smart repair



Damage 4: Sliding door, right: Sliding door - Scratch(es) - Smart repair



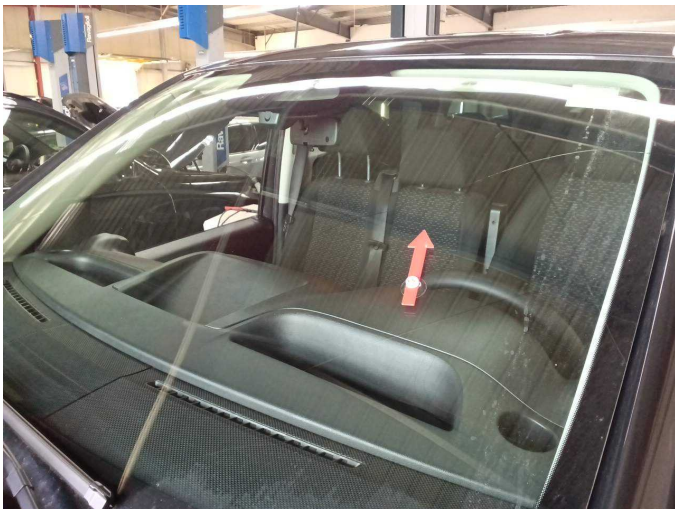
Damage 5: Wing mirror - right side: Mirror housing - Scratch(es) - Replace



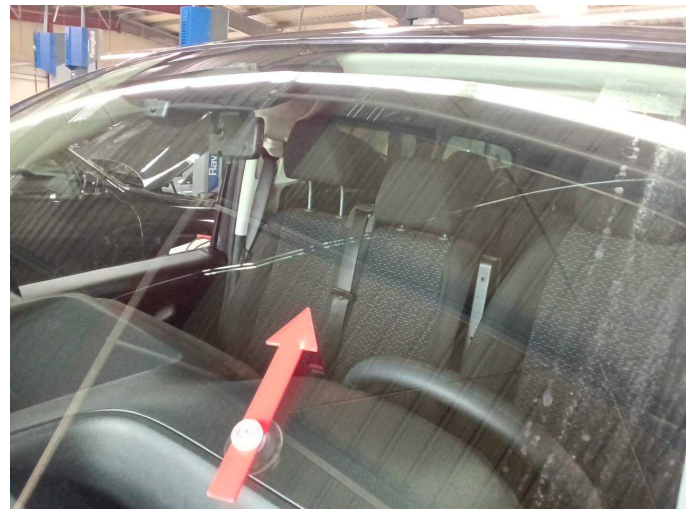
Damage 5: Wing mirror - right side: Mirror housing - Scratch(es) - Replace



Damage 5: Wing mirror - right side: Mirror housing - Scratch(es) - Replace



Damage 6: Vehicle glazing: Windscreen (Gerissen) - Stone chips - Replace



Damage 6: Vehicle glazing: Windscreen (Gerissen) - Stone chips - Replace



Wear and tear 1: Trim / covers: Boot lining - Scratch(es) - No deduction



Wear and tear 1: Trim / covers: Boot lining - Scratch(es) - No deduction



Wear and tear 2: Sill - right side: Sill - Scratch(es) - No deduction



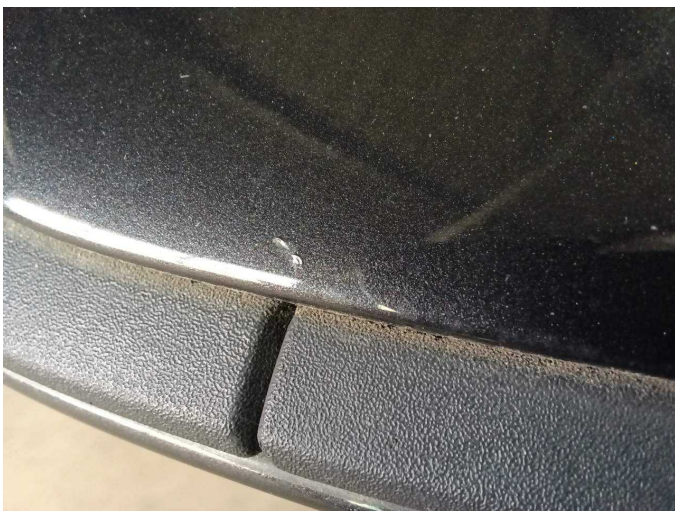
Wear and tear 2: Sill - right side: Sill - Scratch(es) - No deduction



Wear and tear 3: Front bumper: Front bumper - Stone chips - No deduction



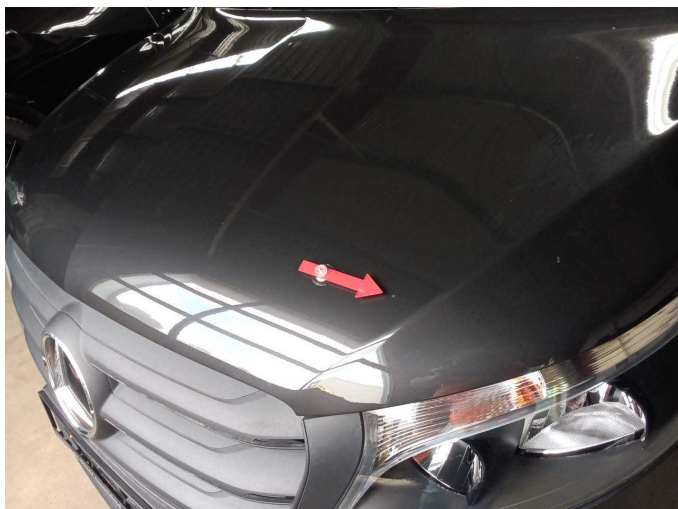
Wear and tear 3: Front bumper: Front bumper - Stone chips - No deduction



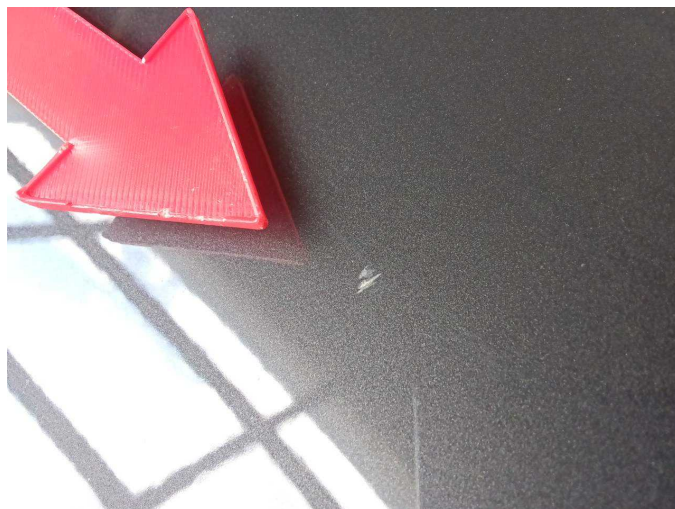
Wear and tear 3: Front bumper: Front bumper - Stone chips - No deduction



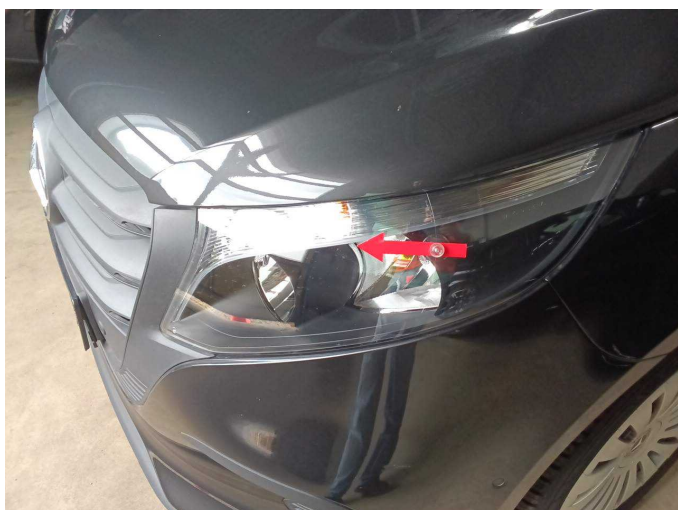
Wear and tear 3: Front bumper: Front bumper - Stone chips - No deduction



Wear and tear 4: Bonnet: Bonnet - Stone chips - No deduction



Wear and tear 4: Bonnet: Bonnet - Stone chips - No deduction



Wear and tear 5: Headlight: Headlight - left side - Stone chips - No deduction



Wear and tear 5: Headlight: Headlight - left side - Stone chips - No deduction