

## Polestar 2:

|                                     |                          |                         |                  |
|-------------------------------------|--------------------------|-------------------------|------------------|
| Vinnumber:                          | <b>LPSVSEGEKNL058025</b> | Versionname:            |                  |
| First Registrationdate:             | <b>12/01/2022</b>        | Fiscalpower:            |                  |
| Expertise Mileage:                  | <b>114412</b>            | Power Kw:               | <b>170</b>       |
| Bodytype:                           |                          | Body colour:            | <b>Black</b>     |
| Gearbox:                            | <b>Automatic</b>         | Type of rims (mounted): | <b>Aluminium</b> |
| Transmission:                       |                          | Parking lot:            | <b>1507</b>      |
| Fueltype:                           | <b>Electric</b>          |                         |                  |
| Type of rims (mounted):             | <b>Aluminium</b>         |                         |                  |
| Certificate of Conformity:          | <b>Yes</b>               |                         |                  |
| Category:                           | <b>Passenger Car</b>     |                         |                  |
| Registration Certificate Car (BE):  | <b>Yes</b>               |                         |                  |
| Registration Certificate Home (BE): | <b>No</b>                |                         |                  |

## Options

|                                 |                              |                        |                            |
|---------------------------------|------------------------------|------------------------|----------------------------|
| Number of keys total:           | <b>2</b>                     | Seats electric F L:    |                            |
| Cruise Control:                 |                              | Seats electric F R:    |                            |
| Steering wheel multifunctional: |                              | Luggage cover:         |                            |
| Seats F heated:                 |                              | Front parking sensors: |                            |
| Radio multimedia:               |                              | Rear parking sensors:  |                            |
| Type of headlighting:           | <b>Headlighting LED</b>      | Type of Tow bar:       | <b>Tow bar collapsible</b> |
| Type of GPS:                    | <b>GPS big screen color</b>  |                        |                            |
| Type of Lining:                 | <b>Lining fabrics</b>        |                        |                            |
| Type of climate control:        | <b>Autom climate control</b> |                        |                            |

## Limited Technical Inspection

## Tyres

| 245/45/19/102 W       |       |                         |       |                          |
|-----------------------|-------|-------------------------|-------|--------------------------|
| Winter tyres:         | Fr.L. | <b>Vredestein: 4 mm</b> | Fr.R. | <b>Vredestein: 4 mm</b>  |
|                       | Re.L. | <b>Vredestein: 4 mm</b> | Re.R. | <b>Vredestein: 4 mm</b>  |
| Tyre profile depth FL |       |                         |       | <b>4.0</b>               |
| Tyre profile depth FR |       |                         |       | <b>4.0</b>               |
| Tyre profile depth RL |       |                         |       | <b>4.0</b>               |
| Tyre profile depth RR |       |                         |       | <b>4.0</b>               |
| Tyre size FL          |       |                         |       | <b>245/45 R 19 102 W</b> |
| Tyre size FR          |       |                         |       | <b>245/45 R 19 102 W</b> |
| Tyre size RL          |       |                         |       | <b>245/45 R 19 102 W</b> |
| Tyre size RR          |       |                         |       | <b>245/45 R 19 102 W</b> |
| Tyre type FL          |       |                         |       | <b>Winter</b>            |
| Tyre type FR          |       |                         |       | <b>Winter</b>            |
| Tyre type RL          |       |                         |       | <b>Winter</b>            |
| Tyre type RR          |       |                         |       | <b>Winter</b>            |
| Tyre make FL          |       |                         |       | <b>2480</b>              |
| Tyre make FR          |       |                         |       | <b>2480</b>              |
| Tyre make RL          |       |                         |       | <b>2480</b>              |
| Tyre make RR          |       |                         |       | <b>2480</b>              |

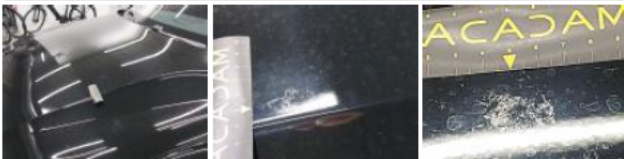
## Assistance equipment

|   |            |             |            |
|---|------------|-------------|------------|
| Repair kit:                               | <b>Yes</b> | Compressor: | <b>Yes</b> |
| Number of charging cables (normal):       | <b>0</b>   |             |            |
| Number of charging cables (rapid charge): | <b>1</b>   |             |            |

|                                    |                |
|------------------------------------|----------------|
| Total cost ex VAT:                 | <b>1704,98</b> |
| Bumper F, Scratch(es), Acceptable: | <b>0,00</b>    |



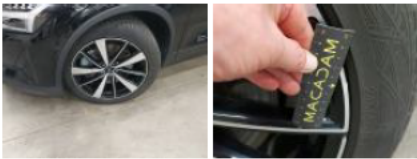
Bonnet, Chemical polution, Repair and paint (complete) 487,44



Alloy rim RL polished, Scratch(es), Repair and paint (complete) 204,21



Alloy rim FL polished, Scratch(es), Acceptable 0,00



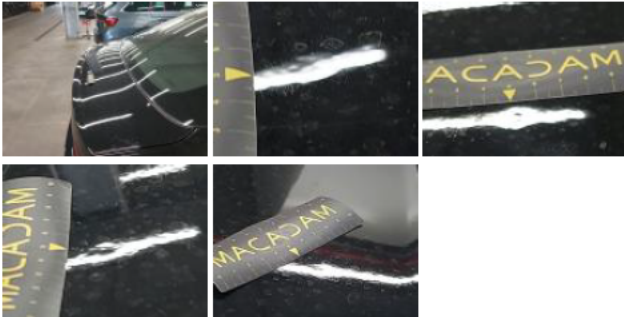
Charging cable (normal), Missing, Replace 0,00



Bumper R, Scratch(es), Acceptable 0,00



Tailgate / Boot, Hail damage, Repair and paint (complete) 0,00



Door FR, Dent(s) and scratch(es), Acceptable 0,00



Alloy rim RR polished, Scratch(es), Repair and paint (complete) 204,21



Roof, Chemical polution, Repair and paint (complete) 809,12

