

Expertise

Protocol number: 46191370
Order No. / Reference: 26603684
Inspection date: 29 Jun 2026

Manufacturer: Ford

Model: Transit Custom 280 L1H1 LKW VA Trend

VIN: WF0ZXXTTGZLE17885



Vehicle details

Manufacturer / Type / Model / Equipment

Ford Transit Custom 280 L1H1 LKW VA Trend

Vehicle Identification number	WF0ZXXTTGZLE17885
Mileage (Read)	74,304 km
First registration	3 Dec 2020
Number of holders	1
Next periodical technical inspection	12/2026
(Report on hand)	

Power / Engine displacement	96 kw / 1,995 ccm
------------------------------------	-------------------

Fuel type / Cylinder	Diesel / 4
-----------------------------	------------

Gearbox / Number of gears	Manual / 6
----------------------------------	------------

Type of drive	Front drive
----------------------	-------------

Type of vehicle	Van
------------------------	-----

Colour / colour code	Frost Weiß
-----------------------------	------------

Doors / Seats	4 / 5
----------------------	-------

Upholstery type	Cloth
------------------------	-------

Colour of upholstery	Black
-----------------------------	-------

Vehicle with smoke odor	no
--------------------------------	----



Vehicle details

Maintenance booklet / proof	digital proof / complete	Next maintenance in	166 Tag(e)
Last service on / at	12/2024 at 56,792 km		
Key is / should be	2 / 2	FZG documents	ZB#2 (B) was available (copy), ZB#1 (S) was not available.
		Letter No.	FV100012
Previous damage / Accident	None detectable	Repainting	None detectable
Inspection conditions	sufficient	Lifting equipment / pit	yes
Test drive	Not performed	Engine function test	Performed
Manufacturer key number/ type code number	8566 / BMU 05841		
Emission standard	EURO6;WLTP;CI;PI/CI;N1 III, N2	fine dust sticker	
Permitted total weight	2,800 kg	Empty weight	

Tyres

Mounted tyres

#	Tyre size	Type of tyre	Manufacturer	Tread depth
1)	215/65 R15 104T	Summer tyres on Steel rim with wheel cover	Uniroyal	6mm / 6mm
2)	215/65 R15 104T	Summer tyres on Steel rim with wheel cover	Continental	7mm / 7mm

Additional tyres

#	Tyre size	Type of tyre	Manufacturer	Tread depth
1)	215/65 R15 104T	Winter tyres on Steel	Dunlop	8mm / 8mm
2)	215/65 R15 104T	Winter tyres on Steel	Dunlop	9mm / 9mm

Replacement

Typ	Tyre size	Type of tyre	Manufacturer	Tread depth
E	215/65 R15 104T C	Summer tyres on Steel	Continental	8 mm

Legend: Tread depth information for the left tire is listed first, for the right tire it is listed second on the axle in the direction of travel.



Equipment

Standard equipment

- 1 battery
- Anti-lock braking system with electronic brake force distribution (EBD)
- Headliner in driver's cab
- Tachometer
- Electronic Stability Program (ESP) with Traction Control System (TCS)
- Ford Easy Fuel
- Warranty: 2-year Ford new car warranty including Ford Assistance mobility guarantee
- Generator, 240 A
- Cruise control including leather steering wheel
- Transmission: 6-speed transmission
- Grab handle on the B-pillar of the passenger side
- Lockable glove compartment with lid
- Interior lighting with delay circuit
- Front air conditioning (including dust and pollen filter)
- Cargo area lighting with activatable switch-off delay
- Emergency brake assist including emergency brake light
- Particulate filter: diesel particulate filter
- Wheel trims
- Wheels: Steel wheels 6.5 J x 15 with 215/65 R 15 tires (6.5 J x 15 with 215/65 R 15 tires)
- Sliding door entry light automatically illuminates when the door is opened
- Mud flaps front and rear
- Low side paneling
- Seat belts
- Seats: Seat Package 14 (Custom DOKA Trend) (Driver's seat, 4-way adjustable (forward/backward, backrest, seat cushion tilt, height) - Single passenger seat, 4-way adjustable (forward/backward, backrest, seat cushion tilt, height) - Height-adjustable headrests - Heated driver's seat - Heated passenger seat - Interior armrest for driver - Interior armrest on single passenger seat - Manual lumbar support (driver's seat) - TREND seat cover: fabric - Double cab partition with window)
- Central locking with remote control
- Second key with remote control
- Driver's side airbag
- On-board computer
- roof, flat
- Double-leaf rear door with 180° opening angle (without window)
- Windows, 2nd row: Side windows fixed, right and left
- Front electric windows
- FordPass Connect (including live traffic information and Wi-Fi hotspot: Information about the current status or location of the vehicle, as well as control of selected vehicle functions via smartphone with the FordPass app. Real-time traffic information (in conjunction with audio systems 24 and 25). Wi-Fi hotspot (up to 4G/LTE, for up to 10 mobile devices). Further information about FordPass Connect can be found at <https://www.ford.de/fordpass-connect>.)
- Paint finish: Solid color paint
- Steering column, adjustable in height and reach
- Package: Style color package (front and rear bumpers and exterior mirror caps painted in body color)
- Wheels/Tires: Spare wheel, steel wheel
- Headlights: Halogen projector headlights (with LED daytime running lights and fog lights with static cornering lights)
- Sliding door: Sliding door, right
- Side protection strips
- Power steering
- Seats: 2nd row, 3-seater bench (incl. height-adjustable headrests, 2 ISOFIX mounts (each on the outer seat) and open under-seat storage compartment (rear seat cover always the same as front seat cover))
- Start-stop system
- Power outlet: 12-volt connection
- Front bumper in body color
- Lashing eyes 4
- Immobiliser
- Heat-insulating glazing, lightly tinted
- Auxiliary heater, electric



Extra equipment

- Airbag (passenger side)
- Package: Visibility Package II (Trend) (Heated windscreen - Electrically folding exterior mirrors - Adjustable instrument lighting - Windscreen wipers with rain sensor - Headlight assistant with day/night sensor)
- Tire Pressure Monitoring System (TPMS)
- Reversing camera with front and rear parking pilot system with fog lights (with image transmission of the rear driving path in the multifunction display [additionally with coupling aid in conjunction with trailer hitch (extra charge)] with high-mounted LED exterior light downlight)
- SORTIMO TKKR 131311
- Parking heater, programmable, with remote control
- Thirdly, rubber seal, protective cover
- Radio: Audio system 25: Ford audio system including Ford SYNC 3 with AppLink, DAB/DAB+, navigation (Radio (FM/AM) 8" touchscreen multifunction display, FordPass Connect Wi-Fi hotspot, integrated control panel and audio remote control, Ford SYNC 3 with touchscreen (hands-free system with voice control, SMS readout/sending function, Bluetooth, Emergency Assistance...), AppLink (advanced voice control, privacy mode, support for Android Auto and Apple CarPlay, capacitive touchscreens...), lane guidance, adaptive cruise control, lane keeping assist, traffic sign recognition, Park Pilot front/rear)
- Blind spot assist including cross traffic alert and trailer function (electrically adjustable and heated exterior mirrors, also electrically foldable)

Retrofitted equipment

- SORTIMO TKKR 131311

Brief expert findings

Documents submitted	At the time of the inspection, the vehicle registration certificate Part 2 (title) was available, but the vehicle registration certificate Part 1 (document) was not. (Copy)
VIN comparison	The vehicle identification number (VIN) was read from the vehicle and its conformity with the submitted documents was confirmed by the undersigned during the inspection.
Inspection	The inspection conditions were sufficient for the assessment of the vehicle. Lifting equipment and/or a pit were available for examining the vehicle.
Test drive	No test drive/shunting maneuver was carried out during the inspection of the vehicle.
Engine function test	An engine test run was performed.

Value reducing factors

No.	Component group	Description
1	Side panel - rear right side	Side panel - Scratch(es) - Smart repair
2	Body	Body (Zusatzkosten können entstehen) - Glued / labelled - De-glue / neutralise
3	Door - front right side	Door - dent(s) - Smart repair
4	Mudguard - right side	Mud flap - Missing - Replace
5	Trim / covers	Trim / covers (Nebelscheinwerfer rechts) - Scratched - Replace
6	Boot lid / rear door	Trim rear door - plywood - lower (rechts) - Broken / torn - Replace
7	Sill - right side	Sill - Dent / paintcoat damage - Repair and paint
8	Side panel - rear left side	Interior trim - Broken / torn - Replace
9	Sliding door, right	Sliding door with glass panel - Dent / paintcoat damage - Repair and paint
10	Front bumper	Bumper with Parktronic - Scratched - Paint

Wear and tear

No.	Component group	Description
1	Boot lid / rear door	Rear door - right side - dent(s) - No deduction

The vehicle shows signs of wear and tear commensurate with its age and use.



Order/Scope of Order

An order was placed to prepare a sales report for the described vehicle. This report includes the following:

- Description of key vehicle information
- Documentation of equipment features
(Delivery by third-party service providers)
- Documentation of damage, defects, missing parts
- Documentation of prior damage, unrepaired prior damage, repainting
- A brief visual or functional inspection of the equipment details, if possible.
(Functional testing of driver assistance systems is not included in the scope of services!)
- a photographic documentation of the vehicle

Basis for the order

This product is based on the guidelines for vehicle returns and valuations of light commercial vehicles published by Alphabet Fleet Management GmbH. The expert makes the specific findings in each individual case objectively, within the framework of the prescribed standards, based on their own expertise.

The vehicle inspection takes place in a fully assembled, unassembled state.

Damage or defects that can only be detected during disassembly/diagnostic work or through further investigation remain within the realm of prognostic risk. An increased risk exists due to concealed defects caused by fraudulent misrepresentation and which were not identifiable by the expert.

Damage or defects resulting from normal use or wear and tear of the vehicle will be accepted in accordance with the applicable standard.

There was no explicit identification or monetary consideration of the expected features within the product.

Features which, in their nature and extent, slightly exceed normal use but do not constitute unacceptable damage, will be documented and indicated as signs of wear, if applicable.

Damage or defects that, according to the applicable standard, can no longer be attributed to normal use or wear and tear are listed under "Value Reducing Factors" in the product description.

Depending on the product specification, a monetary ID can be provided. If this takes place, the costs can be 100% d or pro rata depending on the vehicle's age and mileage.

Previous damages

No apparent prior damage that had been repaired could be found on the vehicle.

Comments

- Winterradsatz ist kein Bestandteil des Auslieferungsumfangs.



Figure 1: Diagonal front (left)



Figure 2: Diagonal front (right)



Figure 3: Diagonal rear (left)



Figure 4: Diagonal rear (right)

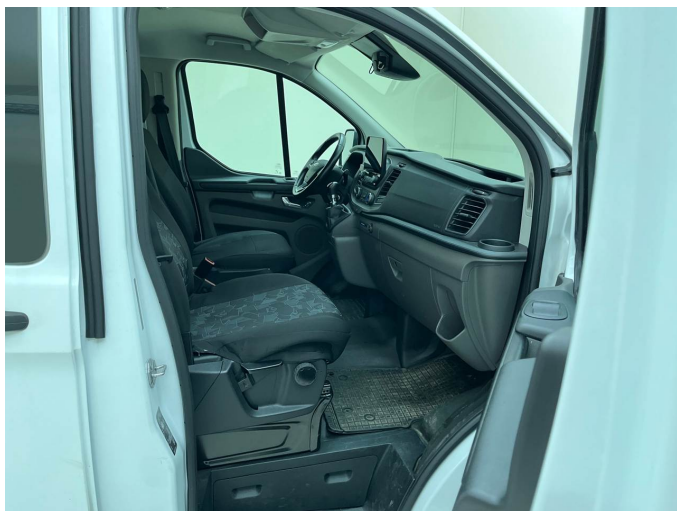


Figure 5: Interior - front



Figure 6: Interior - rear



Figure 7: Instrument cluster



Figure 8: Instrument panel



Figure 9: Interior 360° view



Figure 10: Cargo area



Figure 11: VIN



Figure 12: Mounted tyres



Figure 13: Documents

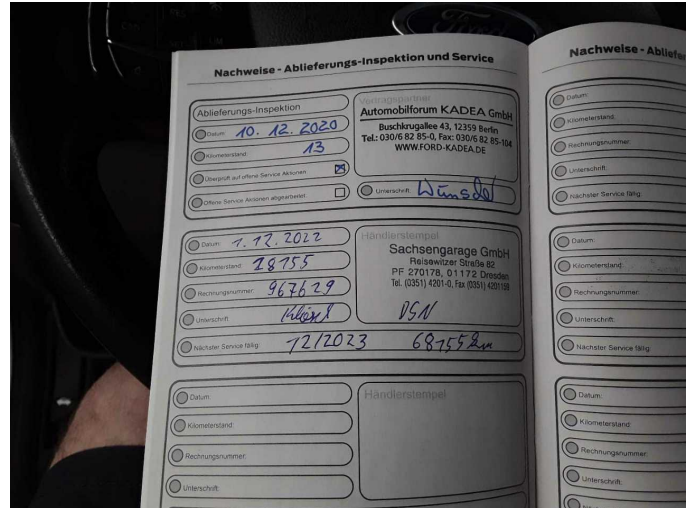


Figure 14: Documents



Figure 15: Documents



Figure 16: Additional tyres

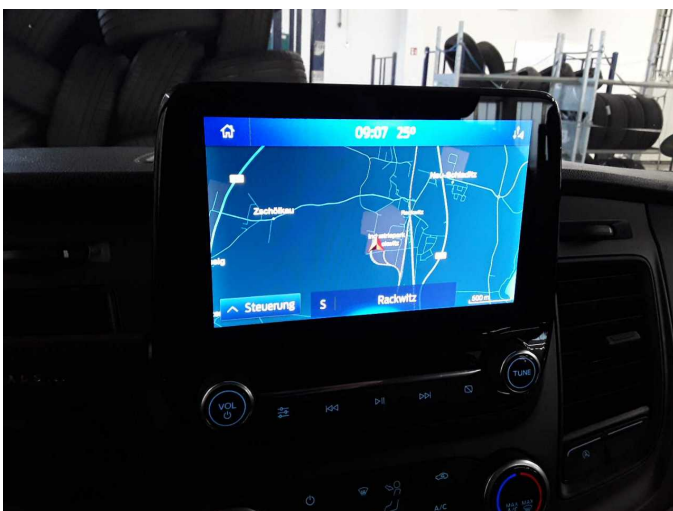


Figure 17: Navigation



Figure 18: Misc.



Figure 19: Misc.



Figure 20: Misc.



Figure 21: Misc.



Figure 22: Misc.



Figure 23: Misc.



Figure 24: Misc.



Figure 25: Misc.



Damage 1: Side panel - rear right side: Side panel - Scratch(es) - Smart repair



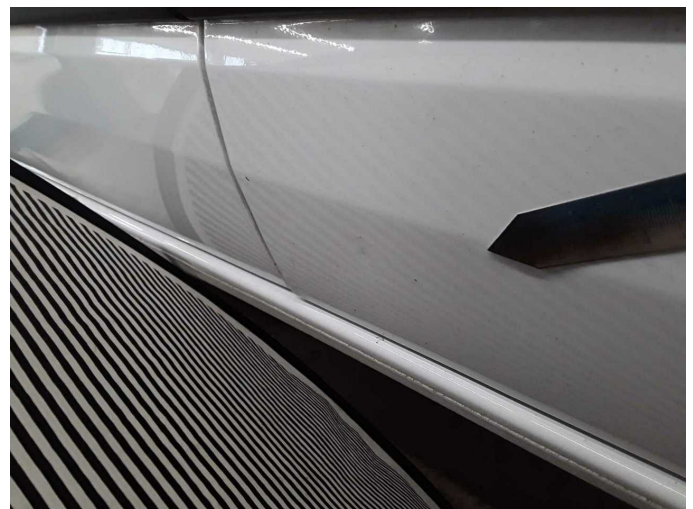
Damage 1: Side panel - rear right side: Side panel - Scratch(es) - Smart repair



Damage 2: Body: Body (Zusatzkosten können entstehen) - Glued / labelled - De-glove / neutralise



Damage 3: Door - front right side: Door - dent(s) - Smart repair



Damage 3: Door - front right side: Door - dent(s) - Smart repair



Damage 4: Mudguard - right side: Mud flap - Missing - Replace



Damage 5: Trim / covers: Trim / covers (Nebelscheinwerfer rechts) - Scratched - Replace



Damage 5: Trim / covers: Trim / covers (Nebelscheinwerfer rechts) - Scratched - Replace



Damage 6: Boot lid / rear door: Trim rear door - plywood - lower (rechts) - Broken / torn - Replace



Damage 6: Boot lid / rear door: Trim rear door - plywood - lower (rechts) - Broken / torn - Replace



Damage 7: Sill - right side: Sill - Dent / paintcoat damage - Repair and paint



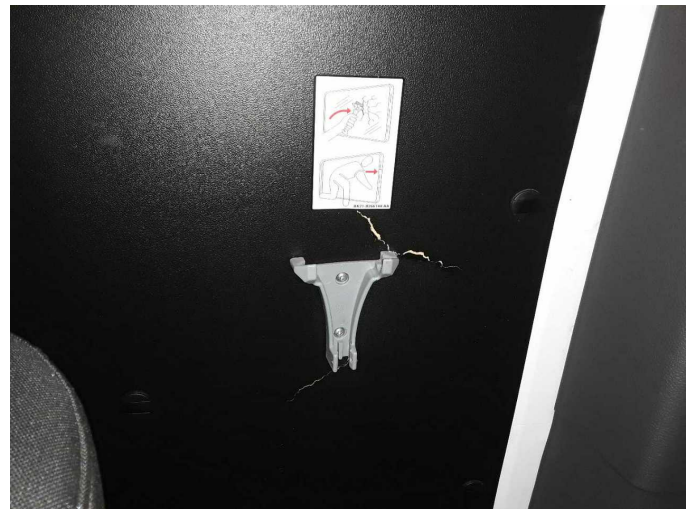
Damage 7: Sill - right side: Sill - Dent / paintcoat damage - Repair and paint



Damage 7: Sill - right side: Sill - Dent / paintcoat damage - Repair and paint



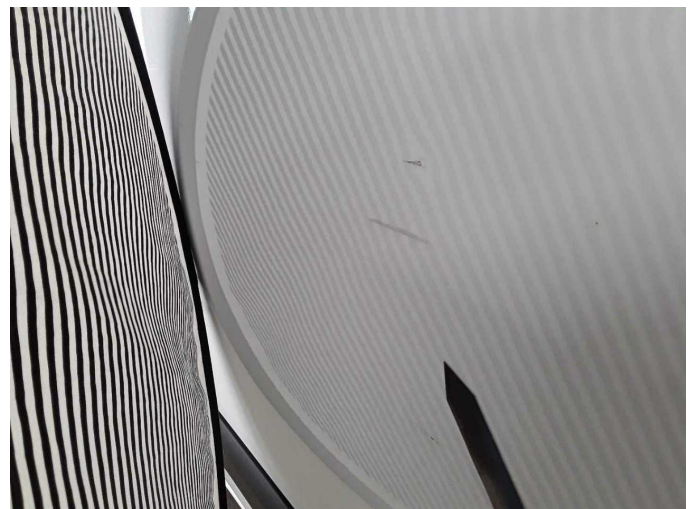
Damage 8: Side panel - rear left side: Interior trim - Broken / torn - Replace



Damage 8: Side panel - rear left side: Interior trim - Broken / torn - Replace



Damage 9: Sliding door, right: Sliding door with glass panel - Dent / paintcoat damage - Repair and paint



Damage 9: Sliding door, right: Sliding door with glass panel - Dent / paintcoat damage - Repair and paint



Damage 9: Sliding door, right: Sliding door with glass panel - Dent / paintcoat damage - Repair and paint



Damage 10: Front bumper: Bumper with Parktronic - Scratched - Paint



Damage 10: Front bumper: Bumper with Parktronic - Scratched - Paint



Damage 10: Front bumper: Bumper with Parktronic - Scratched - Paint



Damage 10: Front bumper: Bumper with Parktronic - Scratched - Paint



Wartungshistorie

(gemäß Auftraggeber Informationen)

Fahrgestellnummer: WF0ZXTTGZLE17885

Hersteller / Modell: FORD FORD Transit Custom 280 L1H1 LKW VA Trend

Datum	KM-Stand	Beschreibung
13.05.2026	73.095	Bremsklötze vorne
20.01.2026	69.547	Batterie ern; Systemtest/Eigendiagnose
13.12.2024	56.792	AU; Bremsflüssigkeit; Bremsflüssigkeit ern; Luftfiltereinsatz ern; Motoröl b. Wartung; Ölfilter ern; Regelwartungsdienst; Systemtest/Eigendiagnose
28.09.2023	39.536	Bremsinspektion vo + hi; Bremsklötze hinten; Bremsklötze vorne
01.12.2022	28.155	AU; Bremsflüssigkeit; Bremsflüssigkeit ern; Motoröl b. Wartung; Ölfilter ern; Regelwartungsdienst; Systemtest/Eigendiagnose