

Expertise

Protocol number: 46301940
Order No. / Reference: 26562734
Inspection date: 29 Jun 2026

Manufacturer: Opel

Model: Corsa-e Edition

VIN: VXKUHZKXZM4331080



Vehicle details

Manufacturer / Type / Model / Equipment

Opel Corsa-e Edition

Vehicle Identification number VXKUHZKXZM4331080

Mileage (Read) 10,594 km

First registration 23 Nov 2021

Number of holders 2

Power / Engine displacement 57 kw / 0 ccm

Fuel type / Cylinder Electric / 0

Gearbox / Number of gears Direct drive / 1

Type of drive Front drive

Type of vehicle Saloon car

Colour / colour code Jade Weiss

Doors / Seats 5 / 5

Upholstery type Cloth

Colour of upholstery Black-Anthracite



Vehicle details

Maintenance booklet / proof	digital proof / complete	Next maintenance in	8 Monat(e)
Key is / should be	2 / 2	FZG documents	ZB#2 (B) was available (copy), ZB#1 (S) was not available.
		Letter No.	GF936646
Previous damage / Accident	None detectable	Repainting	None detectable
Inspection conditions	sufficient	Lifting equipment / pit	yes
Test drive	Not performed	Engine function test	Performed
Manufacturer key number/ type code number	1889 / ABX 00009		
Emission standard	2017/1151;WLTP;reine Elektrofz	fine dust sticker	
Permitted total weight	1,920 kg	Empty weight	

Tyres

Mounted tyres

#	Tyre size	Type of tyre	Manufacturer	Tread depth
1)	195/55 R16 91H	All-season tyres on Steel rim with wheel cover	Goodyear	3mm / 3mm
2)	195/55 R16 91H	All-season tyres on Steel rim with wheel cover	Goodyear	5mm / 5mm

Replacement

Typ	Tyre size	Type of tyre	Manufacturer	Tread depth
Tirefit		Expiration date 06/2026		

Legend: Tread depth information for the left tire is listed first, for the right tire it is listed second on the axle in the direction of travel.



Equipment

Standard equipment

- Storage compartments
- Airbag: Front airbags, driver and front passenger
- Airbag: Side airbag for driver and front passenger side
- Electrically adjustable and heated exterior mirrors for driver and passenger side
- third brake light
- Headliner, Grey
- Electronic Stability Program Plus (ESP Plus)
- Electric front windows
- Pedestrian protection
- Intelligent speed control and limiter
- Back window, heater
- Child safety lock in the rear doors, manual
- Headrests (5)
- Steering wheel: Comfort steering wheel
- Headlight range adjustment, manual
- Makeup mirror
- Opel Connect with telematics services
- Pollen filter
- Quickheat rapid heating system
- Radio: Multimedia radio with 7" touchscreen color display
- Keyless Start system
- Seat belts: Three-point seat belts in all seats
- Seats: Comfort seats
- Lane Keeping Assist
- 12V power outlet in the center console, front
- Traction Control (TC) Plus
- Traffic sign recognition
- Heat-insulating glazing, tinted
- Adaptive brake light
- Airbag: Front and rear head airbags
- Anti-lock braking system (ABS)
- Hill Start Assist
- On-board computer
- Braking system: Regenerative
- Electronic brake force distribution (EBD)
- Driver information display 7", color
- Front collision warning system with automatic emergency braking and pedestrian detection
- Transmission: Automatic electric drive with fixed gear ratio
- rear window wiper
- automatic climate control
- Charging cable: Mode 2 charging cable
- Steering column, height and reach adjustable
- Lithium-ion battery
- Fatigue detection
- Electric parking brake
- Upholstery: Cloth
- Radio: Digital radio reception DAB+
- Wheels: Steel 6.5 J x 16 with tires 195/55 R16
- Power steering
- Visibility equipment
- Seats: Rear seat backrest split 60:40, foldable
- Start/Stop System
- Daytime running light
- Ambient lighting
- Pre-wiring for child seat mounting system "ISOFIX"
- Central locking with remote control

Extra equipment

- Paint finish: Solid special color Jade White
- Onboard charger (vehicle-integrated charging unit, 3-phase (11 kW))
- Wheels: Steel 6.5 J x 16 with all-weather tires 195/55 R16
- Charging cable: Mode 3 charging cable, single-phase (for public charging (7.4 kW))
- Parkpilot, rear parking aid (with acoustic warning signal when reversing)

Brief expert findings

Documents submitted	At the time of the inspection, the vehicle registration certificate Part 2 (title) was available, but the vehicle registration certificate Part 1 (document) was not. (Copy)
VIN comparison	The vehicle identification number (VIN) was read from the vehicle and its conformity with the submitted documents was confirmed by the undersigned during the inspection.
Inspection	The inspection conditions were sufficient for the assessment of the vehicle. Lifting equipment and/or a pit were available for examining the vehicle.
Test drive	No test drive/shunting maneuver was carried out during the inspection of the vehicle.
Engine function test	An engine test run was performed.



Value reducing factors

No.	Component group	Description
1	Trim / covers	Floor mats - Damaged - Replace
2	Front bumper	Front bumper - Scratch(es) - Smart repair
3	Wheel / tyres	Tyre - front (Beide) - Does not meet the leasing specifications - Replace
4	Rear bumper	Rear bumper - Broken / torn - Replace

Wear and tear

No.	Component group	Description
1	Bonnet	Bonnet - Stone chips - No deduction
2	Vehicle glazing	Windscreen - Stone chips - No deduction

The vehicle shows signs of wear and tear commensurate with its age and use.

Missing parts

Description

Equipment - charging cable (Mode 3)

Order/Scope of Order

An order was placed to prepare a sales report for the described vehicle. This report includes the following:

- Description of key vehicle information
- Documentation of equipment features
(Delivery by third-party service providers)
- Documentation of damage, defects, missing parts
- Documentation of prior damage, unrepaired prior damage, repainting
- A brief visual or functional inspection of the equipment details, if possible.
(Functional testing of driver assistance systems is not included in the scope of services!)
- a photographic documentation of the vehicle

Basis for the order

This product is based on the guidelines for vehicle returns and valuations of light commercial vehicles published by Alphabet Fleet Management GmbH. The expert makes the specific findings in each individual case objectively, within the framework of the prescribed standards, based on their own expertise.

The vehicle inspection takes place in a fully assembled, unassembled state.

Damage or defects that can only be detected during disassembly/diagnostic work or through further investigation remain within the realm of prognostic risk. An increased risk exists due to concealed defects caused by fraudulent misrepresentation and which were not identifiable by the expert.

Damage or defects resulting from normal use or wear and tear of the vehicle will be accepted in accordance with the applicable standard.

There was no explicit identification or monetary consideration of the expected features within the product.

Features which, in their nature and extent, slightly exceed normal use but do not constitute unacceptable damage, will be documented and indicated as signs of wear, if applicable.

Damage or defects that, according to the applicable standard, can no longer be attributed to normal use or wear and tear are listed under "Value Reducing Factors" in the product description.

Depending on the product specification, a monetary ID can be provided. If this takes place, the costs can be 100% or pro rata depending on the vehicle's age and mileage.



Previous damages

No apparent prior damage that had been repaired could be found on the vehicle.



Figure 1: Diagonal front (left)



Figure 2: Diagonal front (right)



Figure 3: Diagonal rear (left)



Figure 4: Diagonal rear (right)



Figure 5: Interior - front



Figure 6: Interior - rear



Figure 7: Instrument cluster



Figure 8: Instrument panel



Figure 9: Interior 360° view



Figure 10: Cargo area

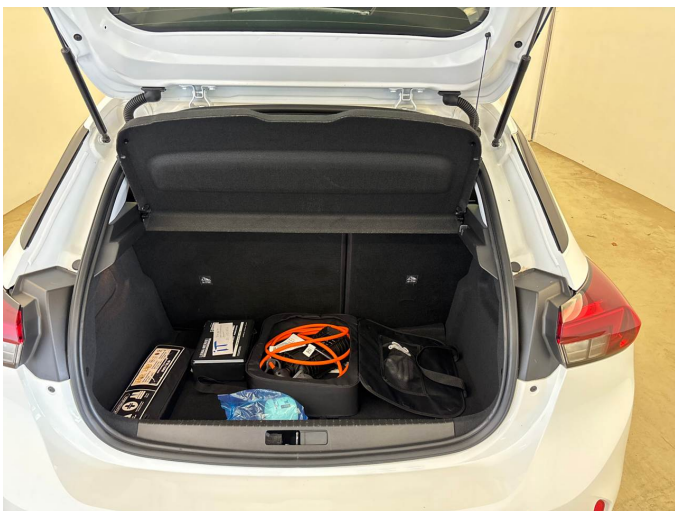


Figure 11: Cargo area



Figure 12: VIN



Figure 13: Mounted tyres



Figure 14: Navigation



Figure 15: Misc.



Figure 16: Misc.



Figure 17: Misc.



Figure 18: Misc.



Figure 19: Misc.

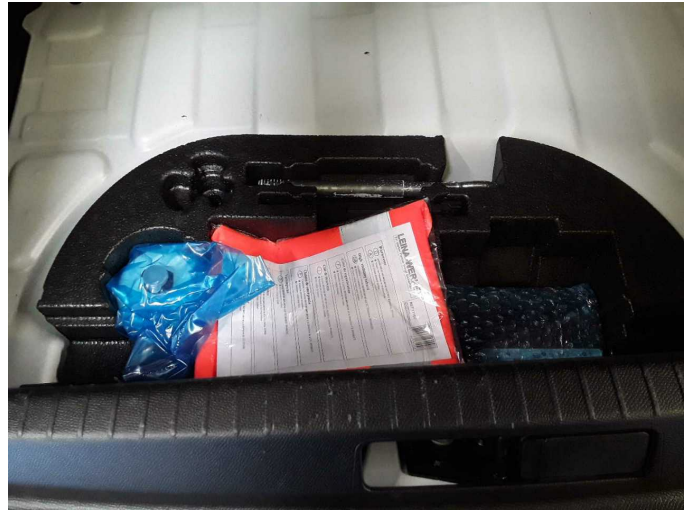


Figure 20: Misc.



Figure 21: Misc.



Figure 22: Misc.

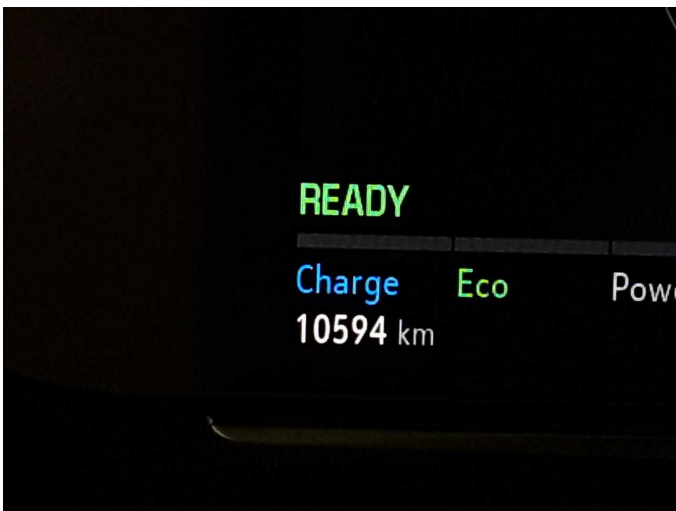


Figure 23: Misc.

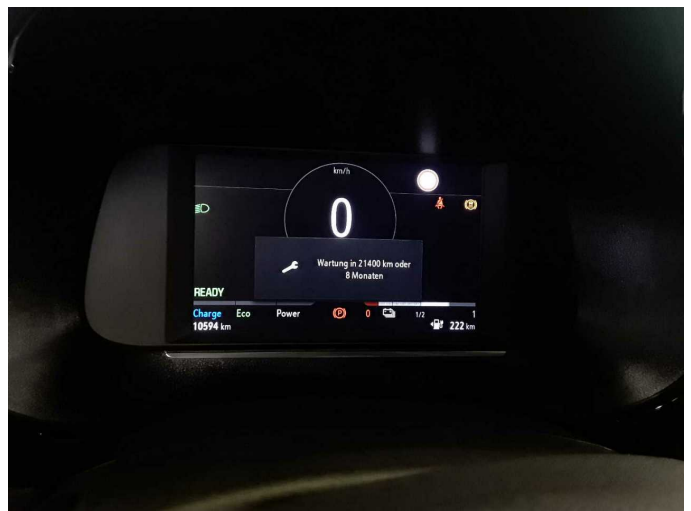


Figure 24: Misc.



Figure 25: Misc.



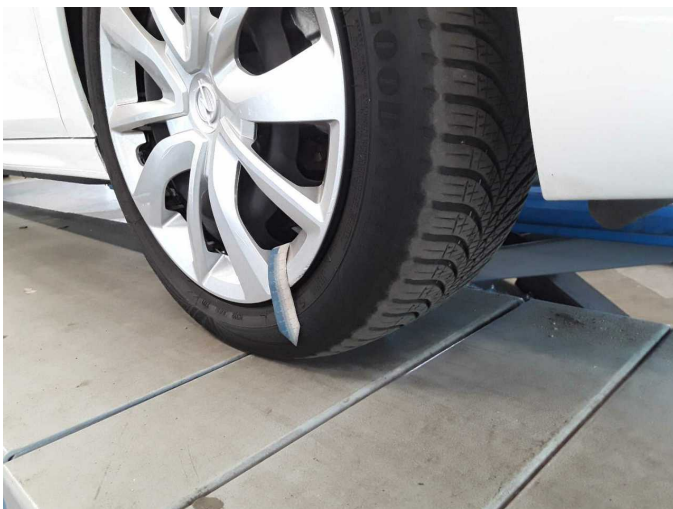
Damage 1: Trim / covers: Floor mats - Damaged - Replace



Damage 2: Front bumper: Front bumper - Scratch(es) - Smart repair



Damage 2: Front bumper: Front bumper - Scratch(es) - Smart repair



Damage 3: Wheel / tyres: Tyre - front (Beide) - Does not meet the leasing specifications - Replace



Damage 3: Wheel / tyres: Tyre - front (Beide) - Does not meet the leasing specifications - Replace



Damage 3: Wheel / tyres: Tyre - front (Beide) - Does not meet the leasing specifications - Replace



Damage 3: Wheel / tyres: Tyre - front (Beide) - Does not meet the leasing specifications - Replace



Damage 3: Wheel / tyres: Tyre - front (Beide) - Does not meet the leasing specifications - Replace



Damage 4: Rear bumper: Rear bumper - Broken / torn - Replace



Damage 4: Rear bumper: Rear bumper - Broken / torn - Replace



Damage 4: Rear bumper: Rear bumper - Broken / torn - Replace



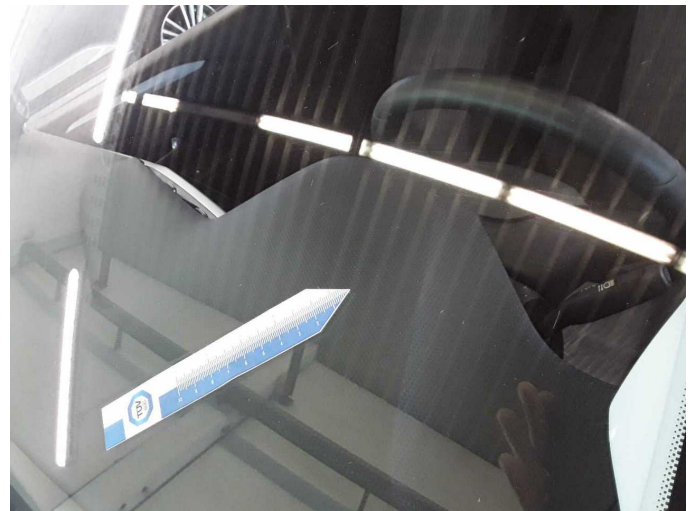
Wear and tear 1: Bonnet: Bonnet - Stone chips - No deduction



Wear and tear 1: Bonnet: Bonnet - Stone chips - No deduction



Wear and tear 2: Vehicle glazing: Windscreen - Stone chips - No deduction



Wear and tear 2: Vehicle glazing: Windscreen - Stone chips - No deduction