

Expertise

Protocol number: 46186231
Order No. / Reference: 26518149
Inspection date: 18 Jun 2026

Manufacturer: Ford

Model: Kuga 2.0 EcoBlue Aut. 4x4 COOL&CONNECT

VIN: WF0FXXWPMFNT28136



Vehicle details

Manufacturer / Type / Model / Equipment

Ford Kuga 2.0 EcoBlue Aut. 4x4 COOL&CONNECT

Vehicle Identification number	WF0FXXWPMFNT28136
Mileage (Read)	153,684 km
First registration	18 May 2022
Number of holders	1
Next periodical technical inspection	05/2027 (Report not on hand)

Power / Engine displacement 110 kw / 1,995 ccm

Fuel type / Cylinder Diesel / 4

Gearbox / Number of gears Automatic / 8

Type of drive All-wheel drive

Type of vehicle Station wagon

Colour / colour code Mineral-Silber Metallic

Doors / Seats 5 / 5

Upholstery type Cloth

Colour of upholstery Black

readiness to drive Roadworthy



Vehicle details			
Maintenance booklet / proof	Available / complete	Next maintenance in	66 %
Last service on / at	03/2026 at 146,409 km		
Key is / should be	2 / 2	FZG documents	ZB#2 (B) was available (copy), ZB#1 (S) was not available.
		Letter No.	GK811999
Previous damage / Accident	None detectable	Repainting	None detectable
Inspection conditions	sufficient	Lifting equipment / pit	yes
Test drive	Not performed	Engine function test	Performed
readiness to drive	Roadworthy		
Manufacturer key number/ type code number	8566 / BVH 00060		
Emission standard	EURO6;WLTP;AP;PI/CI; M, N1 I	fine dust sticker	
Permitted total weight	2,245 kg	Empty weight	

Tyres

Mounted tyres				
#	Tyre size	Type of tyre	Manufacturer	Tread depth
1)	225/65 R17 102H	Summer tyres on Light alloy	Pirelli	6mm / 6mm
2)	225/65 R17 102H	Summer tyres on Light alloy	Pirelli	6mm / 6mm

Additional tyres				
#	Tyre size	Type of tyre	Manufacturer	Tread depth
1)	225/65 R17 106H	Winter tyres on Steel rim with wheel cover	Continental	3mm / 3mm
2)	225/65 R17 106H	Winter tyres on Steel rim with wheel cover	Continental	4mm / 4mm

Replacement				
Typ	Tyre size	Type of tyre	Manufacturer	Tread depth
	Tirefit	Expiration date 04/2026		

Legend: Tread depth information for the left tire is listed first, for the right tire it is listed second on the axle in the direction of travel.



Equipment

Standard equipment

- All-wheel drive
- Passenger airbag deactivation
- Tires: Tire repair kit (maximum speed 80 km/h when used)
- third brake light
- Fabric headliner
- Diesel particulate filter
- Tachometer
- Driver information system with on-board computer - color
- Selective driving mode switch (5 driving modes to choose from: Normal, Sport, Eco, Slippery and Unpaved Roads)
- Electric parking brake with auto hold function
- Ford Easy Fuel (Ford Easy Fuel comfort refueling system (Eliminates the need for a separate internal fuel cap and prevents misfueling by detecting the size difference between petrol and diesel nozzles. The filler neck only opens when the correct fuel is used.)
- Luggage compartment cover, roller blind, removable
- Cruise control
- Illuminated glove compartment
- rear window wiper
- ISOFIX mounts including top tether attachment points on the outer seats of the 2nd row.
- air conditioning, manual
- Front and rear headrests (5) height adjustable
- Paint finish: Solid
- LED taillights
- Steering wheel: Steering wheel, 3-spoke design, in Sensico synthetic leather
- MyKey key system (individually programmable second key)
- Navigation system: Ford navigation system incl. Ford SYNC 3 (AppLink, Android Auto, Apple CarPlay - 8" touchscreen (20.3cm screen diagonal) - DAB/DAB+ radio reception (Digital Audio Broadcasting) - 6 speakers - Steering wheel controls - Bluetooth® hands-free system and audio streaming - 2 USB ports - Voice control for audio and telephone - SMS text-to-speech function - Road map for Europe)
- Tire Pressure Monitoring System (TPMS)
- Projection lens headlights with LED daytime running lights
- Headlights with delayed shut-off
- Power steering (electro-mechanical, speed-dependent (EPAS - Electric Power Assisted Steering))
- Seats: Rear bench seat, sliding, with split-folding backrest
- Seats: Front sports seats with integrated headrests
- Start-stop system
- Carpet floor mats in the front
- Immobiliser
- Anti-lock braking system
- Tires: 7 J x 17 steel wheels (with 225/65 R 17 tires and wheel trims)
- Chrome decorative trim around the side windows
- Roof spoiler (painted in car color)
- Dual exhaust system
- Electronic Stability Program (ESP) (with hill start assist, traction control and emergency brake assist)
- Lane keeping assist including lane keeping assist
- Electric front and rear windows (with quick-down function including all-around closing function)
- Ford EcoCoach (shows the efficiency of current driving behavior)
- FordPower start function (keyless start)
- FordPass Connect (including eCall, live traffic information and Wi-Fi hotspot)
- Luggage compartment lighting
- Transmission: 8-speed automatic
- Heated rear window
- Intelligent Protection System (IPS) (front airbag for driver and front passenger - front and rear head and shoulder airbags - side airbag for driver and front passenger - seat belt tensioners and force limiters in the front and on the outer seats of the 2nd row - 3-point seat belts in all seats, height-adjustable in the front - warning system for unfastened driver and front passenger seat belts)
- Steering column, adjustable in height and reach
- Front center console with integrated armrest (2 front cup holders)
- Fog light
- Emergency brake light, pulsating illumination of the brake lights during hard braking
- Front and rear parking pilot system
- Upholstery: Cloth
- Post-Collision Assist
- Pre-Collision Assist (including forward alert system (FA) with pedestrian and bicycle detection - active from approx. 5 km/h to 130 km/h, pedestrian and bicycle detection up to approx. 80 km/h.)
- Headlight assistant with day/night sensor
- Seats: Passenger seat, 4-way manually adjustable
- Seats: Driver's seat, 8-way manually adjustable, including adjustable lumbar support
- Seats: Front seats, individually and variably heated
- Power outlet: 12-volt connection in the luggage compartment
- Central locking with remote control and remote luggage compartment release



Extra equipment

- Swiveling towbar (incl. ESP trailer stabilization)
- Paint finish: Mineral Silver Metallic
- Package: Winter (Trend, Cool&Connect) (Heated windscreen - Heated leather steering wheel - Air conditioning with automatic temperature control)
- Air conditioning with automatic temperature control (separately adjustable for driver and passenger side (2-zone automatic climate control))

Brief expert findings

Documents submitted	At the time of the inspection, the vehicle registration certificate Part 2 (title) was available, but the vehicle registration certificate Part 1 (document) was not. (Copy)
VIN comparison	The vehicle identification number (VIN) was read from the vehicle and its conformity with the submitted documents was confirmed by the undersigned during the inspection.
Inspection	The inspection conditions were sufficient for the assessment of the vehicle. Lifting equipment and/or a pit were available for examining the vehicle.
Test drive	No test drive/shunting maneuver was carried out during the inspection of the vehicle.
Engine function test	An engine test run was performed.
readiness to drive	The vehicle was roadworthy at the time of inspection.

Value reducing factors

No.	Component group	Description
1	2nd wheel set	2 tyres - Does not meet the leasing specifications - No deduction
2	Equipment	Tirefit filler - Expired - Replace
3	Door - rear left side	Door - dent(s) - Smooth repair work
4	Boot lid / rear door	Boot lid - dent(s) - Smooth repair work
5	Door - front right side	Door - Scratch(es) - Paint
6	Bonnet	Bonnet - Stone chips - Paint
7	Front bumper	Front bumper - Damaged - Replace

Wear and tear

No.	Component group	Description
1	Rear bumper	Rear bumper - Scratch(es) - No deduction
2	Front bumper	Spoiler (Links) - Scratch(es) - No deduction
3	2nd wheel set	2 tyres - No deduction

The vehicle shows signs of wear and tear commensurate with its age and use.

Order/Scope of Order

An order was placed to prepare a sales report for the described vehicle. This report includes the following:

- Description of key vehicle information
- Documentation of equipment features
(Delivery by third-party service providers)
- Documentation of damage, defects, missing parts
- Documentation of prior damage, unrepaired prior damage, repainting
- A brief visual or functional inspection of the equipment details, if possible.
(Functional testing of driver assistance systems is not included in the scope of services!)
- a photographic documentation of the vehicle



Basis for the order

This product is based on the guidelines for vehicle returns and valuations published by Alphabet Fleet GmbH. The expert makes the specific findings in each individual case objectively, within the framework of the prescribed standards, based on their own expertise.

The vehicle inspection takes place in a fully assembled, unassembled state.

Damage or defects that can only be detected during disassembly/diagnostic work or through further investigation remain within the realm of prognostic risk. An increased risk exists due to concealed defects caused by fraudulent misrepresentation and which were not identifiable by the expert.

Damage or defects resulting from normal use or wear and tear of the vehicle will be accepted in accordance with the applicable standard.

There was no explicit identification or monetary consideration of the expected features within the product.

Features which, in their nature and extent, slightly exceed normal use but do not constitute unacceptable damage, will be documented and indicated as signs of wear, if applicable.

Damage or defects that, according to the applicable standard, can no longer be attributed to normal use or wear and tear are listed under "Value Reducing Factors" in the product description.

Depending on the product specification, a monetary ID can be provided. If this takes place, the costs can be 100% d or pro rata depending on the vehicle's age and mileage.

Previous damages

No apparent prior damage that had been repaired could be found on the vehicle.



Figure 1: Diagonal front (left)



Figure 2: Diagonal front (right)



Figure 3: Diagonal rear (left)



Figure 4: Diagonal rear (right)



Figure 5: Interior - front



Figure 6: Interior - rear



Figure 7: Instrument cluster



Figure 8: Instrument panel



Figure 9: Interior 360° view



Figure 10: Cargo area

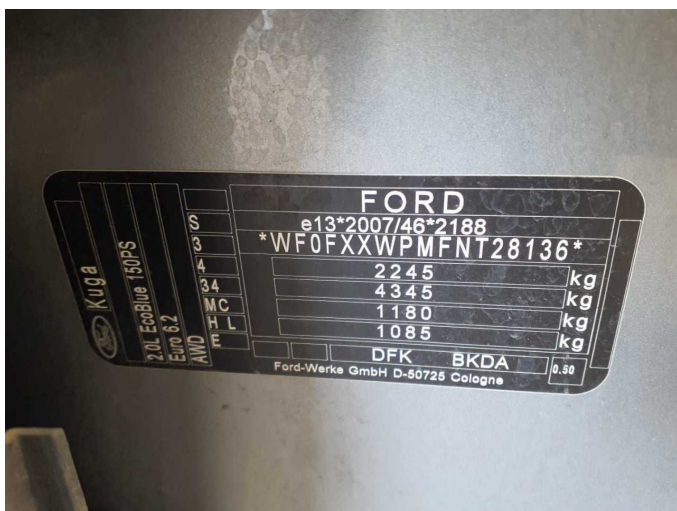


Figure 11: VIN



Figure 12: Mounted tyres



Figure 13: Documents



Figure 14: Additional tyres

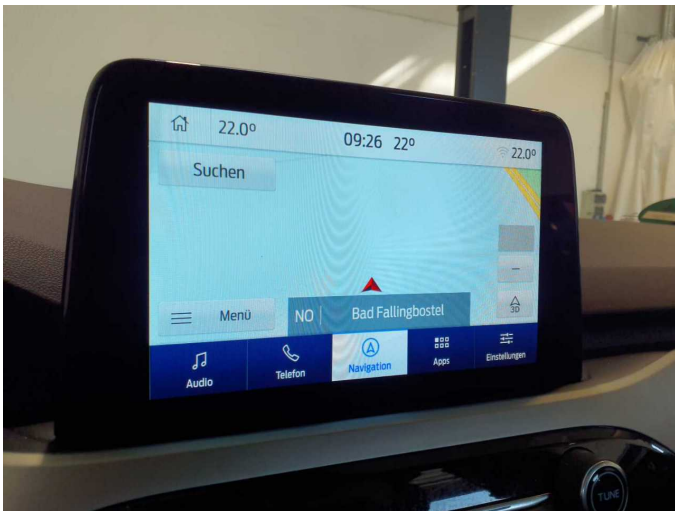


Figure 15: Navigation



Figure 16: Misc.



Figure 17: Misc.

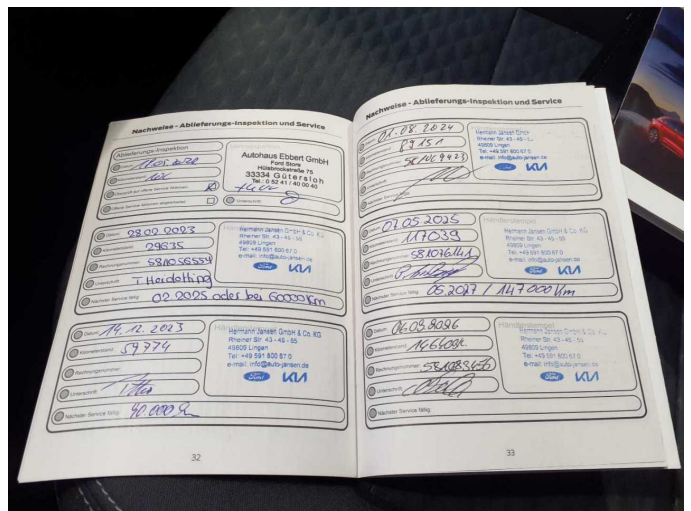


Figure 18: Misc.



Figure 19: Misc.



Figure 20: Misc.



Figure 21: Misc.

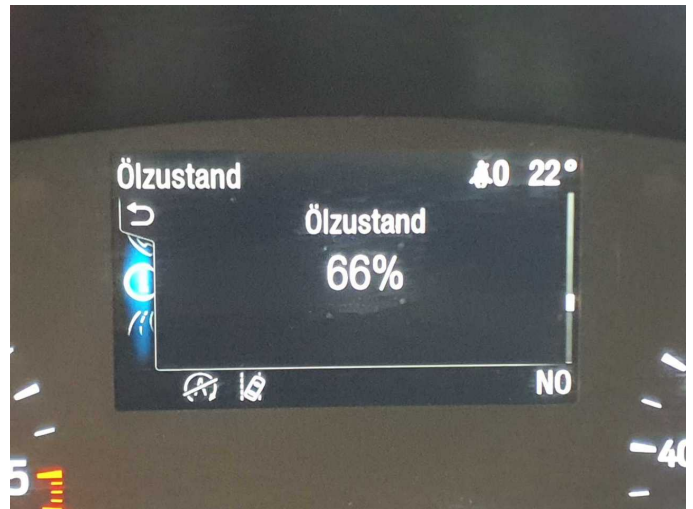


Figure 22: Misc.



Figure 23: Misc.

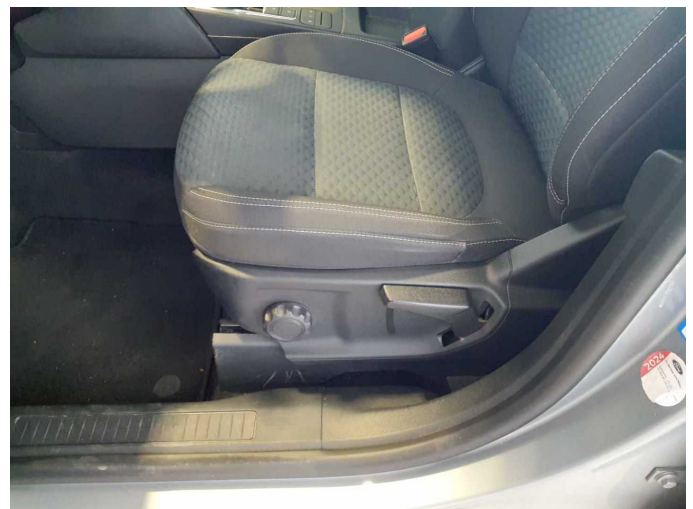


Figure 24: Misc.



Figure 25: Misc.



Figure 26: Misc.

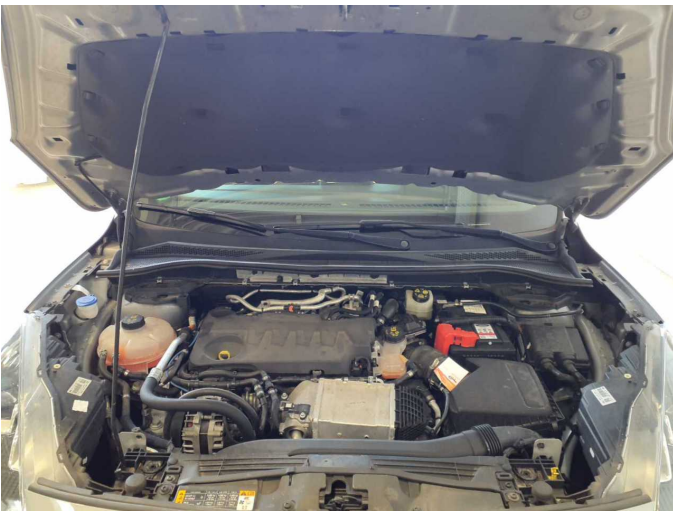


Figure 27: Misc.



Figure 28: Misc.

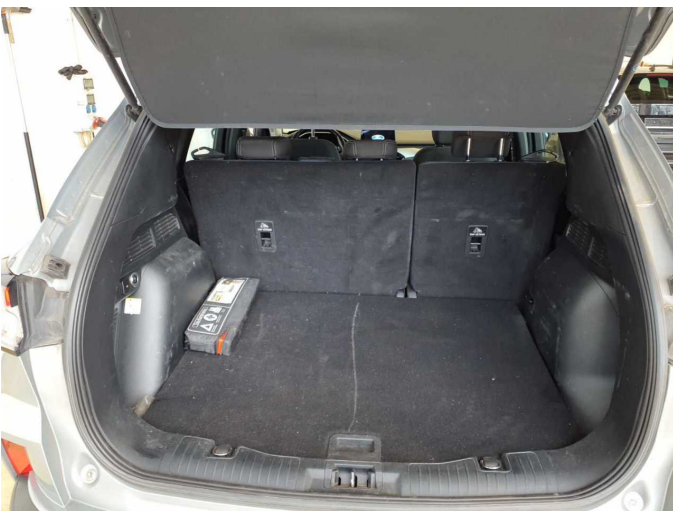


Figure 29: Misc.



Figure 30: Misc.



Figure 31: Misc.



Figure 32: Misc.



Damage 1: 2nd wheel set: 2 tyres - Does not meet the leasing specifications - No deduction



Damage 1: 2nd wheel set: 2 tyres - Does not meet the leasing specifications - No deduction



Damage 1: 2nd wheel set: 2 tyres - Does not meet the leasing specifications - No deduction



Damage 1: 2nd wheel set: 2 tyres - Does not meet the leasing specifications - No deduction



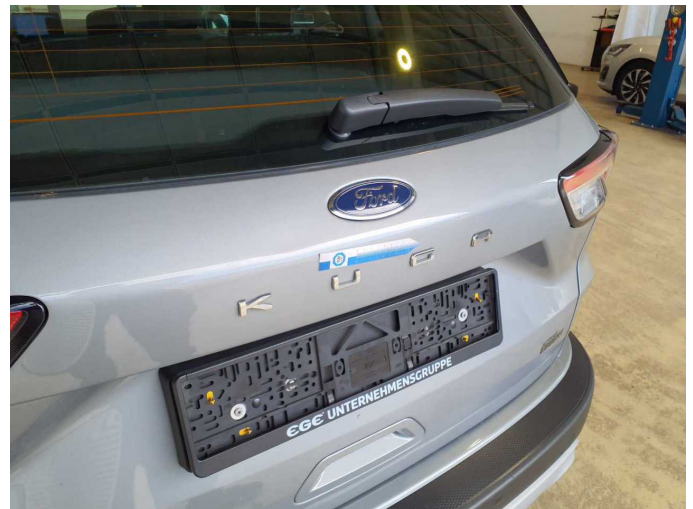
Damage 2: Equipment: Tirefit filler - Expired - Replace



Damage 3: Door - rear left side: Door - dent(s) - Smooth repair work



Damage 3: Door - rear left side: Door - dent(s) - Smooth repair work



Damage 4: Boot lid / rear door: Boot lid - dent(s) - Smooth repair work



Damage 4: Boot lid / rear door: Boot lid - dent(s) - Smooth repair work



Damage 5: Door - front right side: Door - Scratch(es) - Paint



Damage 5: Door - front right side: Door - Scratch(es) - Paint



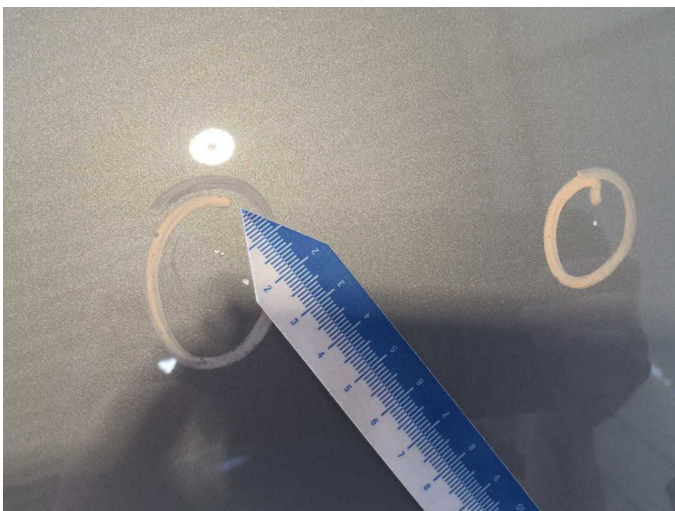
Damage 6: Bonnet: Bonnet - Stone chips - Paint



Damage 6: Bonnet: Bonnet - Stone chips - Paint



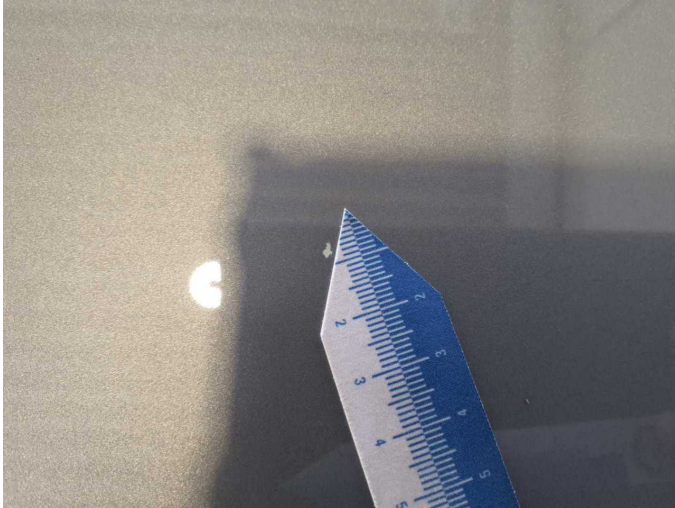
Damage 6: Bonnet: Bonnet - Stone chips - Paint



Damage 6: Bonnet: Bonnet - Stone chips - Paint



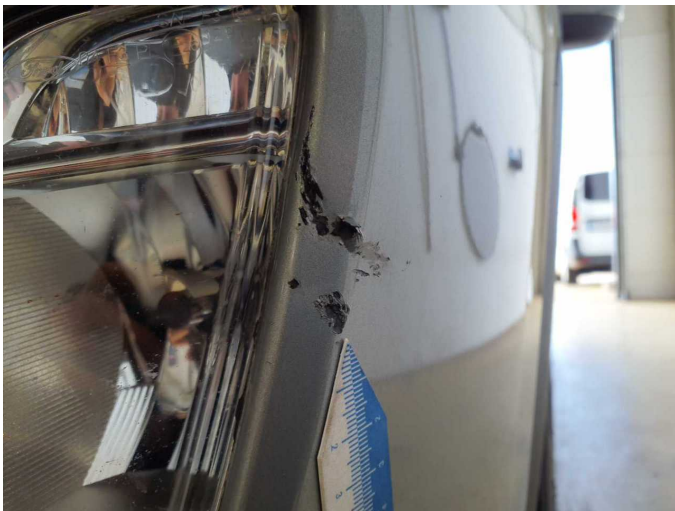
Damage 6: Bonnet: Bonnet - Stone chips - Paint



Damage 6: Bonnet: Bonnet - Stone chips - Paint



Damage 7: Front bumper: Front bumper - Damaged - Replace



Damage 7: Front bumper: Front bumper - Damaged - Replace



Damage 7: Front bumper: Front bumper - Damaged - Replace



Wear and tear 3: 2nd wheel set: 2 tyres - No deduction



Wear and tear 3: 2nd wheel set: 2 tyres - No deduction



Wear and tear 3: 2nd wheel set: 2 tyres - No deduction



Wear and tear 3: 2nd wheel set: 2 tyres - No deduction