

## Expertise

Protocol number: 46130268  
Order No. / Reference: 26487995  
Inspection date: 24 Jun 2026

Manufacturer: Ford

Model: Transit Custom 340 L1H1 LKW VA Autm. Trend

VIN: WF0YXXTTGYLR87431



### Vehicle details

#### Manufacturer / Type / Model / Equipment

Ford Transit Custom 340 L1H1 LKW VA Autm. Trend

<b>Vehicle Identification number</b>	WF0YXXTTGYLR87431
<b>Mileage (Read)</b>	123,507 km
<b>First registration</b>	4 Aug 2020
<b>Number of holders</b>	1
<b>Next periodical technical inspection</b>	10/2026
(Report on hand)	

<b>Power / Engine displacement</b>	96 kw / 1,995 ccm
------------------------------------	-------------------

<b>Fuel type / Cylinder</b>	Diesel / 4
-----------------------------	------------

<b>Gearbox / Number of gears</b>	Automatic / 6
----------------------------------	---------------

<b>Type of drive</b>	Front drive
----------------------	-------------

<b>Type of vehicle</b>	Van
------------------------	-----

<b>Colour / colour code</b>	Frost-Weiß
-----------------------------	------------

<b>Doors / Seats</b>	4 / 3
----------------------	-------

<b>Upholstery type</b>	Cloth
------------------------	-------

<b>Colour of upholstery</b>	Black
-----------------------------	-------



## Vehicle details

<b>Maintenance booklet / proof</b>	Available / incomplete	<b>Next maintenance in</b>	0 km
<b>Last service on / at</b>	01/2024 at 83,738 km		
<b>Key is / should be</b>	2 / 2	<b>FZG documents</b>	ZB#2 (B) was available (copy), ZB#1 (S) was not available.
		<b>Letter No.</b>	FS972130
<b>Previous damage / Accident</b>	None detectable	<b>Repainting</b>	None detectable
<b>Inspection conditions</b>	sufficient	<b>Lifting equipment / pit</b>	No
<b>Test drive</b>	Not performed	<b>Engine function test</b>	Performed
<b>Manufacturer key number/ type code number</b>	8566 / BMU 05252		
<b>Emission standard</b>	EURO6;WLTP;CI;PI/CI;N1 III, N2	<b>fine dust sticker</b>	
<b>Permitted total weight</b>	3,400 kg	<b>Empty weight</b>	

## Tyres

### Mounted tyres

#	Tyre size	Type of tyre	Manufacturer	Tread depth
1)	215/65 R16 109T	Summer tyres on Steel rim with wheel cover	Goodyear	6mm / 6mm
2)	215/65 R16 109T	Summer tyres on Steel rim with wheel cover	Goodyear	6mm / 6mm

### Additional tyres

#	Tyre size	Type of tyre	Manufacturer	Tread depth
1)	215/65 R16 109T	Winter tyres on Steel	Goodyear	6mm / 6mm
2)	215/65 R16 109T	Winter tyres on Steel	Goodyear	6mm / 6mm

### Replacement

Typ	Tyre size	Type of tyre	Manufacturer	Tread depth
E	215/65 R16 109T C	Summer tyres on Steel	Goodyear	7 mm

**Legend: Tread depth information for the left tire is listed first, for the right tire it is listed second on the axle in the direction of travel.**



## Equipment

### Standard equipment

- 1 battery
- Anti-lock braking system with electronic brake force distribution (EBD)
- roof, flat
- Double-leaf rear door with 180° opening angle (without window)
- Front electric windows
- Ford Easy Fuel
- Warranty: 2-year Ford new car warranty including Ford Assistance mobility guarantee
- Transmission: 6-speed SelectShift automatic transmission
- Front air conditioning
- Cargo area lighting with activatable switch-off delay
- Steering column, adjustable in height and reach
- Package: Style-Color Package
- Wheel trims
- Wheels: Steel wheels 6.5 J x 16 with 215/65 R 16 R tires
- Sliding door entry light automatically illuminates when the door is opened
- Side protection strips
- Power steering
- Start-stop system
- Front bumper in body color
- Immobiliser
- Central locking with remote control
- Second key with remote control
- Driver's side airbag
- Exterior mirrors, electrically adjustable and heated
- On-board computer
- Headliner in driver's cab
- Tachometer
- Electronic Stability Program (ESP) with Traction Control System (TCS)
- FordPass Connect
- Generator, 240 A
- Cruise control including leather steering wheel
- Lockable glove compartment with lid
- Interior lighting with delay circuit
- Paint finish: Solid color paint
- Cargo area floor: Vinyl floor covering, sealed, "Easy Clean"
- Emergency brake assist including emergency brake light
- Particulate filter: diesel particulate filter
- Wheels/Tires: Spare wheel, steel wheel
- Headlights: Halogen projector headlights
- Sliding door: Sliding door, right
- Mud flaps front and rear
- Low side paneling
- Seat belts
- Power outlet: 12-volt connection
- Lashing eyes 8
- Heat-insulating glazing, lightly tinted
- Auxiliary heater, electric



### Extra equipment

- Airbag (passenger side)
- Installation option strip
- Lane Keeping Assist (Lane Keeping Assist and Driver Alert including High Beam Assist - Windscreen wipers with rain sensor and headlight assist with day/night sensor - Heated windscreen)
- Package: Cargo area protection package (side wall lining, high, hardboard - vinyl floor lining "Easy Clean")
- Parking heater, programmable, with remote control
- Radio: Audio System 24: Ford audio system including Ford SYNC 3 with AppLink, DAB/DAB+, navigation system. (Radio (FM/AM) 8" touchscreen multifunction display (20.32 cm), 4 speakers, FordPass Connect Wi-Fi hotspot, integrated control panel and audio remote control on the steering wheel, Ford SYNC 3 with touchscreen (hands-free system with voice control, SMS readout/sending function, Bluetooth, Emergency Assistance...), AppLink (advanced voice control, privacy mode, Android Auto and Apple CarPlay support, capacitive touchscreen technology,...), dynamic navigation, lane guidance, road map for Western Europe)
- Rear swing door with heated rear window
- LED lights in the cargo area
- Package: Visibility Package II (Trend) (Heated windscreen - Electrically folding exterior mirrors - Adjustable instrument lighting - Windscreen wipers with rain sensor - Headlight assistant with day/night sensor)
- Rear window wiper (including windshield washer nozzle and automatic activation when reverse gear is engaged)
- Reversing camera with front and rear parking pilot system with fog lights (with image transmission of the rear driving path in the multifunction display [additionally with coupling aid in conjunction with trailer hitch (extra charge)] with high-mounted LED exterior light downlight)
- Seats: Seat Package 15 - Partition (load-through hatch), with window (Custom Truck Trend) (Driver's seat, 4-way adjustable (forward/backward, backrest, seat cushion tilt, height) - Double passenger seat with storage compartment under individually foldable seat cushions - Height-adjustable headrests - Integrated tray in the double passenger seat (fold-out) - Heated driver's seat - Heated passenger seat (outer seat) - Inner armrest for driver - Manual lumbar support (driver's seat) - TREND seat cover: fabric - Partition with window and load-through hatch)
- Sliding door: Sliding door, right (also with window, fixed)

### Brief expert findings

Documents submitted	At the time of the inspection, the vehicle registration certificate Part 2 (title) was available, but the vehicle registration certificate Part 1 (document) was not. (Copy)
VIN comparison	The vehicle identification number (VIN) was read from the vehicle and its conformity with the submitted documents was confirmed by the undersigned during the inspection.
Inspection	The inspection conditions were sufficient for the assessment of the vehicle. No lifting equipment or pit was available for inspecting the vehicle. Therefore, inspection of the vehicle's underside was only possible to a limited extent.
Test drive	No test drive/shunting maneuver was carried out during the inspection of the vehicle.
Engine function test	An engine test run was performed.

### Value reducing factors

No.	Component group	Description
1	Misc.	Inspection / maintenance (Unvollständig, Motorölservice fällig) - No evidence - No deduction
2	Bonnet	Bonnet bowden cable (Verriegelung nicht möglich, Motorhaube bleibt in Stellung 1) - Specify findings - Perform diagnosis
3	Front structure	Emblem - Missing - Replace
4	Misc.	Inspection / maintenance (Motorölservice) - Due - Remove



## Wear and tear

No.	Component group	Description
1	Vehicle glazing	Windscreen - Stone chips - No deduction
2	Bonnet	Bonnet - Stone chips - No deduction
3	Front bumper	Front bumper - Stone chips - No deduction
4	Interior	Interior - Scratch(es) - No deduction
5	Rear bumper	Rear bumper - Scratch(es) - No deduction
6	Door - front left side	Door edge - Scratch(es) - No deduction

The vehicle shows signs of wear and tear commensurate with its age and use.

## Order/Scope of Order

An order was placed to prepare a sales report for the described vehicle. This report includes the following:

- Description of key vehicle information
- Documentation of equipment features  
(*Delivery by third-party service providers*)
- Documentation of damage, defects, missing parts
- Documentation of prior damage, unrepaired prior damage, repainting
- A brief visual or functional inspection of the equipment details, if possible.  
(*Functional testing of driver assistance systems is not included in the scope of services!*)
- a photographic documentation of the vehicle

## Basis for the order

This product is based on the guidelines for vehicle returns and valuations of light commercial vehicles published by Alphabet Fleet Management GmbH. The expert makes the specific findings in each individual case objectively, within the framework of the prescribed standards, based on their own expertise.

The vehicle inspection takes place in a fully assembled, unassembled state.

Damage or defects that can only be detected during disassembly/diagnostic work or through further investigation remain within the realm of prognostic risk. An increased risk exists due to concealed defects caused by fraudulent misrepresentation and which were not identifiable by the expert.

Damage or defects resulting from normal use or wear and tear of the vehicle will be accepted in accordance with the applicable standard.

There was no explicit identification or monetary consideration of the expected features within the product.

Features which, in their nature and extent, slightly exceed normal use but do not constitute unacceptable damage, will be documented and indicated as signs of wear, if applicable.

Damage or defects that, according to the applicable standard, can no longer be attributed to normal use or wear and tear are listed under "Value Reducing Factors" in the product description.

Depending on the product specification, a monetary ID can be provided. If this takes place, the costs can be 100% d or pro rata depending on the vehicle's age and mileage.

## Previous damages

No apparent prior damage that had been repaired could be found on the vehicle.

## Comments

- Die Unterbodenbesichtigung war nur ebenerdig & eingeschränkt möglich. Mehrkosten möglich.
- Winterradsatz ist kein Bestandteil des Auslieferungsumfangs.



Figure 1: Diagonal front (left)



Figure 2: Diagonal front (right)



Figure 3: Diagonal rear (left)



Figure 4: Diagonal rear (right)

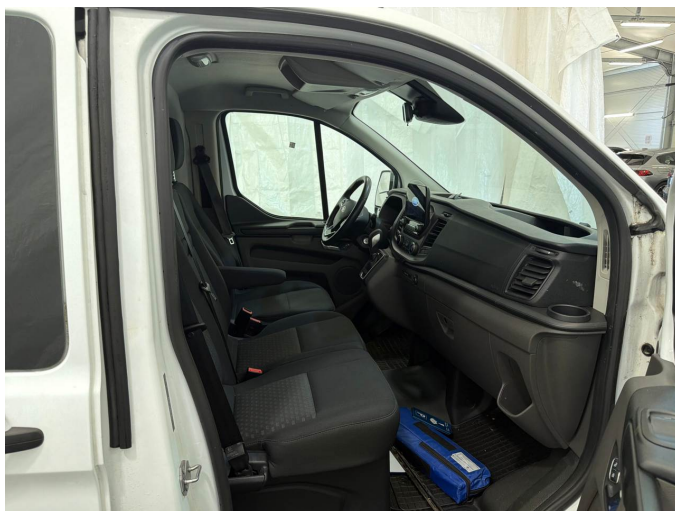


Figure 5: Interior - front



Figure 6: Interior - rear



Figure 7: Instrument cluster



Figure 8: Instrument panel



Figure 9: Interior 360° view



Figure 10: Cargo area

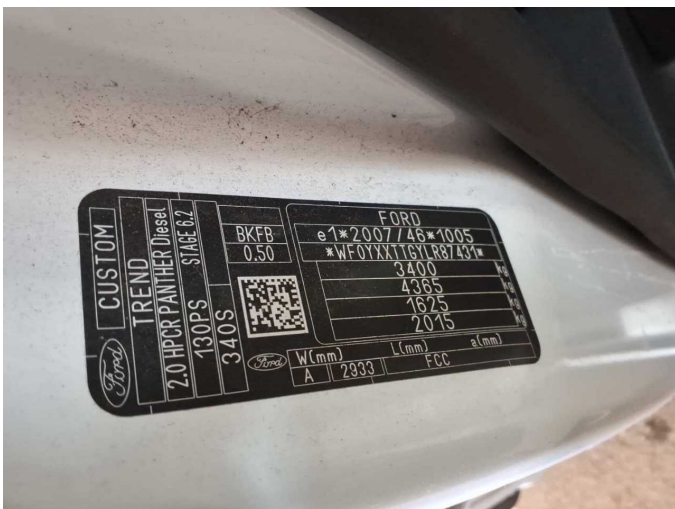


Figure 11: VIN

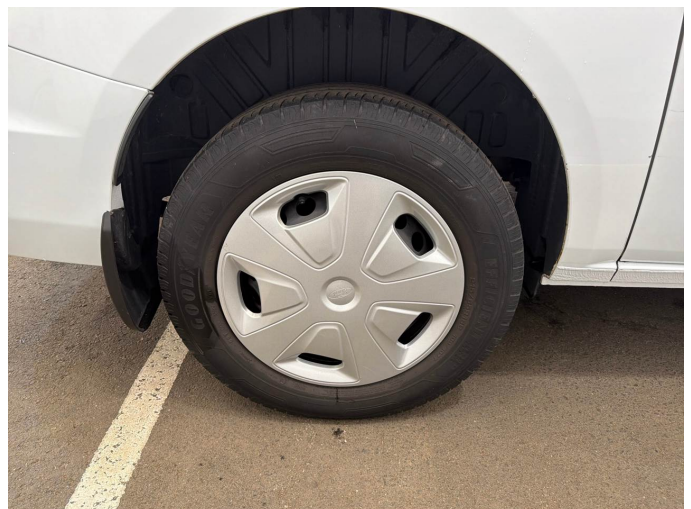


Figure 12: Mounted tyres



Figure 13: Documents

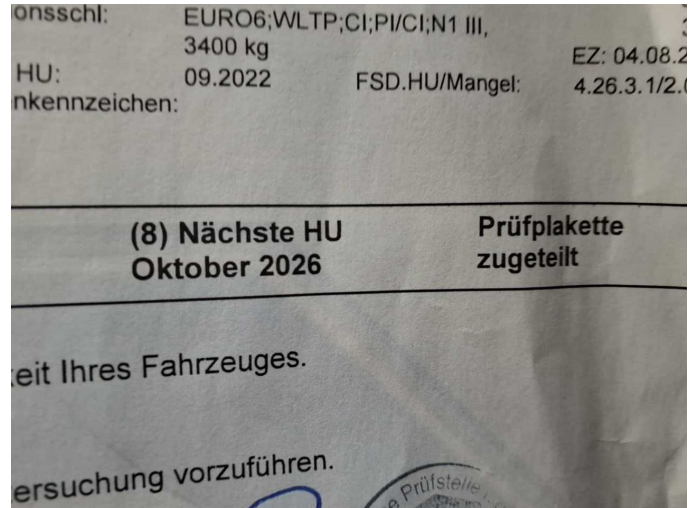


Figure 14: Documents

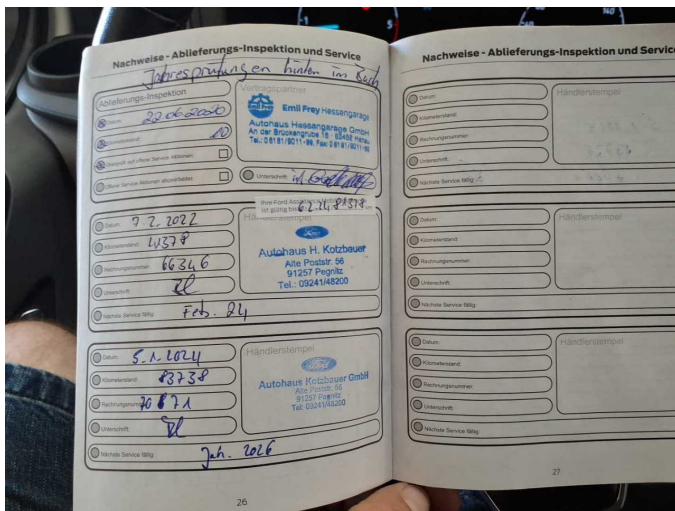


Figure 15: Documents



Figure 16: Documents



Figure 17: Documents



Figure 18: Additional tyres



Figure 19: Navigation



Figure 20: Misc.



Figure 21: Misc.



Figure 22: Misc.



Figure 23: Misc.



Figure 24: Misc.



Figure 25: Misc.



Figure 26: Misc.



Figure 27: Misc.



Figure 28: Misc.



Figure 29: Misc.



**Damage 2:** Bonnet: Bonnet bowden cable (Verriegelung nicht möglich, Motorhaube bleibt in Stellung 1) - Specify findings - Perform diagnosis



**Damage 3:** Front structure: Emblem - Missing - Replace



**Damage 3:** Front structure: Emblem - Missing - Replace



# Wartungshistorie

(gemäß Auftraggeber Informationen)

Fahrgestellnummer: WF0YXXTTGYLR87431

Hersteller / Modell: FORD FORD Transit Custom 340 L1H1 LKW VA Autm. Trend

Datum	KM-Stand	Beschreibung
29.07.2025	118.818	Bremsklötze vorne
13.11.2024	102.888	AU
19.06.2024	93.655	Wasserpumpe ern
23.01.2024	83.741	Bremse Sonstiges; Bremsflüssigkeit; Bremsflüssigkeit ern; Bremsklötze vorne; Bremsscheiben + Klötze v; Bremsscheiben vorne; Luftfiltereinsatz ern; Motoröl b. Wartung; Ölfilter ern; Regelwartungsdienst; Wartung Sonstiges
22.06.2023	71.355	Bremsscheiben + Klötze h
14.09.2022	56.801	AU
18.07.2022	52.283	Bremsklötze vorne
07.02.2022	41.378	Grosse Inspektion; Motoröl b. Wartung
04.06.2021	21.460	Kleine Inspektion