

Expertise

Protocol number: 46103260
Order No. / Reference: 26496030
Inspection date: 23 Jun 2026

Manufacturer: Volkswagen

Model: Multivan Kurz 1,4 OPF eHybrid Life

VIN: WV2ZZZSTZNH009217



Vehicle details

Manufacturer / Type / Model / Equipment

Volkswagen Multivan Kurz 1,4 OPF eHybrid Life

Vehicle Identification number	WV2ZZZSTZNH009217
Mileage (Read)	94,421 km
First registration	1 Jul 2022
Number of holders	1
Next periodical technical inspection	07/2027
(Report on hand)	

Power / Engine displacement	110 kw / 1,395 ccm
------------------------------------	--------------------

Fuel type / Cylinder	Hybr.B/E ext.auf1 / 4
-----------------------------	-----------------------

Gearbox / Number of gears	Automatic / 6
----------------------------------	---------------

Type of drive	Front drive
----------------------	-------------

Type of vehicle	Van
------------------------	-----

Colour / colour code	Deep Black Perleffekt (C9X)
-----------------------------	--------------------------------

Doors / Seats	5 / 6
----------------------	-------

Upholstery type	Cloth
------------------------	-------

Colour of upholstery	Grey-Beige
-----------------------------	------------

Re-import	no
------------------	----

readiness to drive	Roadworthy
---------------------------	------------



Vehicle details			
Maintenance booklet / proof	digital proof / complete	Next maintenance in	7,500 km
Last service on / at	01/2026 at 86,835 km		
Key is / should be	2 / 2	FZG documents	ZB#2 (B) was available (copy), ZB#1 (S) was not available.
		Letter No.	GJ229364
Previous damage / Accident	Detectable	Repainting	Detectable
Inspection conditions	sufficient	Lifting equipment / pit	yes
Test drive	Not performed	Engine function test	Performed
readiness to drive	Roadworthy		
Manufacturer key number/ type code number	0603 / CQI 00038		
Emission standard	EURO6;WLTP;AP;PI/CI; M, N1 I	fine dust sticker	
Permitted total weight	2,750 kg	Empty weight	

Tyres

Mounted tyres				
#	Tyre size	Type of tyre	Manufacturer	Tread depth
1)	235/50 R18 101H	Summer tyres on Light alloy	Hankook	5mm / 5mm
2)	235/50 R18 101H	Summer tyres on Light alloy	Hankook	5mm / 5mm
Additional tyres				
#	Tyre size	Type of tyre	Manufacturer	Tread depth
1)	215/60 R17 104H	Winter tyres on Light alloy	Dunlop	3mm / 3mm
2)	215/60 R17 104H	Winter tyres on Light alloy	Dunlop	5mm / 5mm

Legend: Tread depth information for the left tire is listed first, for the right tire it is listed second on the axle in the direction of travel.

TÜV SÜD Auto Partner GmbH
Wiesenring 2
04159 Leipzig

Inspection location
Mosolf SE & Co.KG
August-Horch-Straße 1
04519 Rackwitz



Equipment



Standard equipment

- 12V system
- Storage compartments: Various shelves and storage compartments
- Evasive steering assist and turn assist
- Exterior mirrors, electrically adjustable, heated and folding
- Exterior mirror housings in high-gloss black
- LED turn signals, integrated into the side of the exterior mirrors
- On-board tools and tire mobility set
- third brake light
- DC/DC converter 3.0 KW
- Decorative inlays: Decorative inlays "Dark Silver Brushed"
- e-Sound
- Electronic Stability Program, ABS, ASR (with deactivation button), EDS
- Chassis: Suspension and damping, standard
- Windows: Front pane made of laminated safety glass, heat and sound insulating
- Transmission: DSG (dual-clutch transmission), 6-speed automatic
- Tailgate: Tailgate with soft-close mechanism
- Rear window with wiper/washer system, heated
- Child seat anchorage ISOFIX and Top Tether
- Cargo space divider (load capacity 20 kg) with bag hooks and luggage net
- LED headlights with LED daytime running lights
- Strip between the headlights painted in glossy black
- Headlight range control
- Light and sight
- Multi-collision brake
- Mains charging cable for household socket
- Emergency braking assistant "Front Assist"
- Particle filter: Gasoline particulate filter
- Radio: App-Connect incl. App-Connect Wireless
- Radio: Digital radio reception (DAB+)
- Radio accessories: Voice control
- Wheels, tires: Covers for alloy wheels
- Wheels/Tires: "Dundrod" alloy wheels 6.5 J x 17, in silver
- Wheels/Tires: Tire pressure monitoring system
- Sliding door: Closing aid on both sides for sliding doors
- Drawers under the outer seats in the passenger compartment and 2 waste bins
- Seat covers: Bi-color seat covers in fabric, design "Ribella"
- Seats in the passenger compartment: 3 individual seats in the 3rd row.
- Seats: Armrests on the front seats, on both sides
- Seats: Seat left and right, in the 1st row
- Lane keeping assistant "Lane Assist"
- Telephone: Mobile phone interface
- Traffic sign recognition
- Electronic immobilizer
- Central locking with keyless start system "Keyless Start" without safe locking
- Euro 6d ISC-FCM emissions standard
- Airbag for driver and front passenger
- Airbag: Side and head airbags for driver and front passenger
- Exterior mirrors, left and right convex
- Battery LiFePO4 450 A (40 Ah)
- Floor coverings: Textile floor mats in the driver's cab
- Floor coverings: Reinforced velour carpet in the passenger compartment
- Roof rails/roof load carrier: Mounting points for roof rack system (6 pieces)
- Tachometer
- Parking assistance in the front and rear areas
- Omission: Without partition wall
- Chassis: 17" disc brakes at the front and 16" disc brakes at the rear
- Electric windows, front
- Cruise control system with speed limiter
- Glove compartment with light
- Glove compartment with flap
- Tailgate: Power closing tailgate
- Instrument usage (km/h)
- Air conditioning with manual control in the driver's cab, with additional heating for the cargo/passenger compartment
- LED taillights
- Steering wheel: Multifunction leather steering wheel with paddle shifters
- Multifunctional display: Digital Cockpit Pro
- Fatigue detection
- Non-smoking version
- eCall emergency call system
- Radio: "Ready 2 Discover" with 25.4 cm (10 inch) color touchscreen
- Radio accessories: 8 speakers (passive)
- Radio accessories: USB interface
- Wheels/Tires: 235/55 R 17 103 H xl, optimized for low rolling resistance
- Wheels/Tire Accessories: Lockable wheel bolts
- Keys for locking system: 2 vehicle keys
- Power steering
- Seatbelt check
- Seats in the passenger compartment: 2 individual seats facing forward in the 2nd row.
- Seats: Armrest(s) inside the seats (removable and repositionable)
- Sun visors with mirrors, illuminated, ticket holder on the driver's side
- First aid kit, warning triangle and high-visibility vest
- Lashing eyes (4 pieces)
- Green thermal insulation glazing



Extra equipment

- Towbar, foldable (with electric release)
- Display: Head-Up Display
- Driver assistance systems: "Travel Assist" and "Emergency Assist" (Driver assistance "Travel Assist" including lane keeping assist "Lane Assist" and "Emergency Assist" - Lane change assist "Side Assist" including "Blind Spot Detection", parking assist and exit warning - Adaptive Cruise Control ACC "stop & go" with speed limiter)
- Steering wheel: Multifunction leather steering wheel with paddle shifters (heated)
- Package: Top Package
- Radio: "Harman Kardon" sound system (13 speakers - 840 watts total power - digital 16-channel amplifier - subwoofer)
- Rear View reversing camera
- Sliding door in the passenger/cargo area: Electric sliding door left and right
- Seats: AGR ErgoComfort front seats
- Seating configuration - 1. Seat packages: 6-seater package = 2-2-2 (Approval for a maximum of 6 seats - 2 individual seats in the 3rd row - 2 individual seats facing forward in the 2nd row)
- Telephone: Mobile phone interface "Comfort" (with inductive charging function)
- Partitions: Mesh partition
- Ambient lighting on the tailgate and 30-color ambient lighting (including footwell lighting for the 2nd row of seats)
- Adaptive Cruise Control (ACC) "stop & go" with speed limiter (including Car2X)
- Windows: Acoustic package (darkened rear windows, side windows in insulated glass - additional interior noise reduction plus)
- Windows: Front pane made of laminated safety glass, heat and sound insulating, heated
- Paint finish: Pearl effect
- Charging cable for AC charging station (Mode 3)
- Navigation system "Discover Pro" (25.4 cm (10 inch) color touchscreen - streaming & internet)
- Park Assist and front and rear parking aid
- Wheels/Tires: "Toshima" 7.5 J x 18 alloy wheels, in silver (tires 235/50 R 18 101 H xl, optimized for rolling resistance - 4 "Toshima" 7.5 J x 18 alloy wheels, in silver - wheel center cover for alloy wheels - lockable wheel bolts)
- Seats: 2 armrests on the inside (removable and repositionable) in the 3rd row of seats
- Heated seats for the driver's cab, left and right, separately adjustable
- Lane change assistant "Side Assist" including "Blind Spot Detection"
- Auxiliary heater for windscreen defrosting and heating/ventilation of the driver's cab (with remote control)
- Table: Multifunctional table/center console with 3 cup holders (movable throughout the vehicle)
- Ambient lighting in the door area with logo projection of the Multivan silhouette

Brief expert findings

Documents submitted	At the time of the inspection, the vehicle registration certificate Part 2 (title) was available, but the vehicle registration certificate Part 1 (document) was not. (Copy)
VIN comparison	The vehicle identification number (VIN) was read from the vehicle and its conformity with the submitted documents was confirmed by the undersigned during the inspection.
Inspection	The inspection conditions were sufficient for the assessment of the vehicle. Lifting equipment and/or a pit were available for examining the vehicle.
Test drive	No test drive/shunting maneuver was carried out during the inspection of the vehicle.
Engine function test	An engine test run was performed.
readiness to drive	The vehicle was roadworthy at the time of inspection.

Value reducing factors

No.	Component group	Description
1	Wheel / tyres	Wheel cover - rear right side - Missing - Replace
2	Wheel / tyres	Wheel cover - front left side - Missing - Replace
3	Sill - right side	Sill (Hinten) - Dent / paintcoat damage - Smart repair
4	Rear bumper	Rear bumper - Scratched - Repair and paint
5	Front bumper	Front bumper - Scratched - Repair and paint
6	Bonnet	Bonnet - Dent / paintcoat damage - Repair and paint
7	Sliding door, right	Sliding door - Dent / paintcoat damage - Repair and paint
8	Boot lid / rear door	Boot lid (Unterteil) - Scratch(es) - Repair and paint



Wear and tear

No.	Component group	Description
1	2nd wheel set	Alloy rim set - complete - Scratched - No deduction
2	2nd wheel set	1 tyre - Does not meet the leasing specifications - No deduction
3	2nd wheel set	1 tyre - Broken / torn - No deduction
4	Body	Body - dent(s) - No deduction

The vehicle shows signs of wear and tear commensurate with its age and use.

Previous damages

No.	Previous damage	Extent of damage (Net)
1	Side - left, Provided by user / customer, from 26 Aug 2024	3.373,55 €

Repainting

No.	Repainting
1	Roof, Roof rail - left side, Mudguard - left side, Side panel - rear left side, Professionally carried out

Paint coat thickness measurement

Roof	269 µm	Roof rail - left side	211 µm
Mudguard - left side	235 µm	Mudguard - right side	185 µm
Bonnet	152 µm	Side panel - rear left side	213 µm
Door - rear left side	167 µm	Door - front left side	158 µm

Order/Scope of Order

An order was placed to prepare a sales report for the described vehicle. This report includes the following:

- Description of key vehicle information
- Documentation of equipment features
(Delivery by third-party service providers)
- Documentation of damage, defects, missing parts
- Documentation of prior damage, unrepaired prior damage, repainting
- A brief visual or functional inspection of the equipment details, if possible.
(Functional testing of driver assistance systems is not included in the scope of services!)
- a photographic documentation of the vehicle



Basis for the order

This product is based on the guidelines for vehicle returns and valuations published by Alphabet Fleet GmbH. The expert makes the specific findings in each individual case objectively, within the framework of the prescribed standards, based on their own expertise.

The vehicle inspection takes place in a fully assembled, unassembled state.

Damage or defects that can only be detected during disassembly/diagnostic work or through further investigation remain within the realm of prognostic risk. An increased risk exists due to concealed defects caused by fraudulent misrepresentation and which were not identifiable by the expert.

Damage or defects resulting from normal use or wear and tear of the vehicle will be accepted in accordance with the applicable standard.

There was no explicit identification or monetary consideration of the expected features within the product.

Features which, in their nature and extent, slightly exceed normal use but do not constitute unacceptable damage, will be documented and indicated as signs of wear, if applicable.

Damage or defects that, according to the applicable standard, can no longer be attributed to normal use or wear and tear are listed under "Value Reducing Factors" in the product description.

Depending on the product specification, a monetary ID can be provided. If this takes place, the costs can be 100% d or pro rata depending on the vehicle's age and mileage.

Previous damages

According to available information previous damages were repaired at the vehicle. Traces of repairs, which allow conclusions about the area of repair, were not recognizable during the inspection.

Comments

- Winterradsatz ist kein Bestandteil des Auslieferungsumfangs.



Figure 1: Diagonal front (left)



Figure 2: Diagonal front (right)



Figure 3: Diagonal rear (left)



Figure 4: Diagonal rear (right)

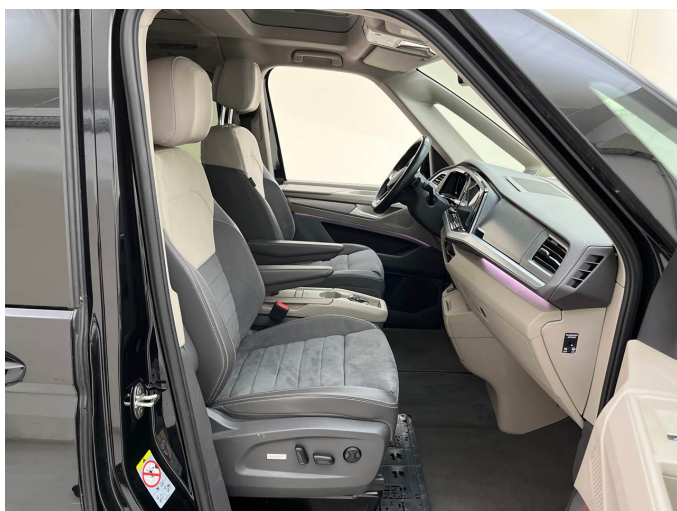


Figure 5: Interior - front



Figure 6: Interior - rear



Figure 7: Instrument cluster



Figure 8: Instrument panel



Figure 9: Interior 360° view



Figure 10: Cargo area



Figure 11: VIN



Figure 12: Mounted tyres



Figure 13: Documents



Figure 14: Documents



Figure 15: Documents

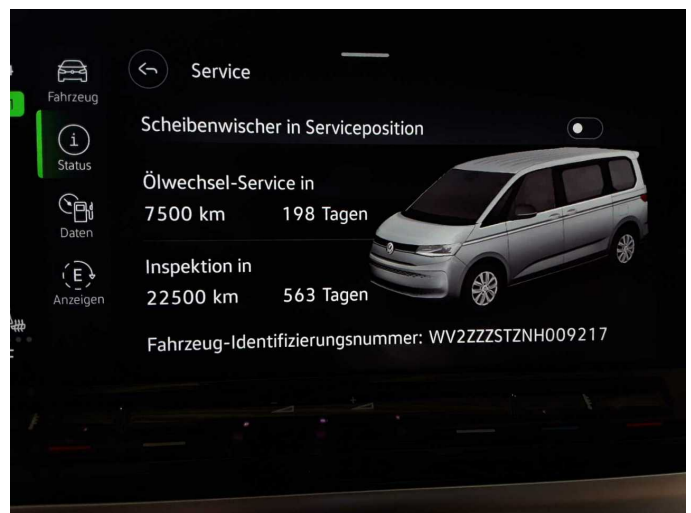


Figure 16: Documents

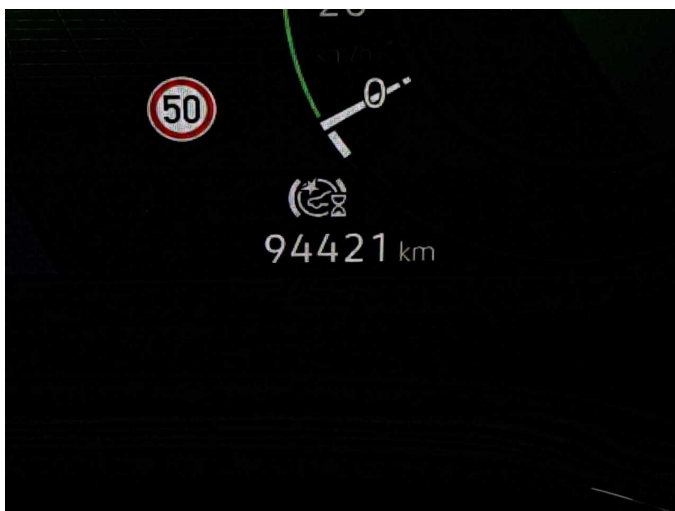


Figure 17: Documents



Figure 18: Additional tyres



Figure 19: Navigation



Figure 20: Misc.



Figure 21: Misc.



Figure 22: Misc.



Figure 23: Misc.



Figure 24: Misc.



Figure 25: Misc.



Figure 26: Misc.



Figure 27: Misc.



Figure 28: Misc.



Figure 29: Misc.



Figure 30: Misc.



Figure 31: Misc.

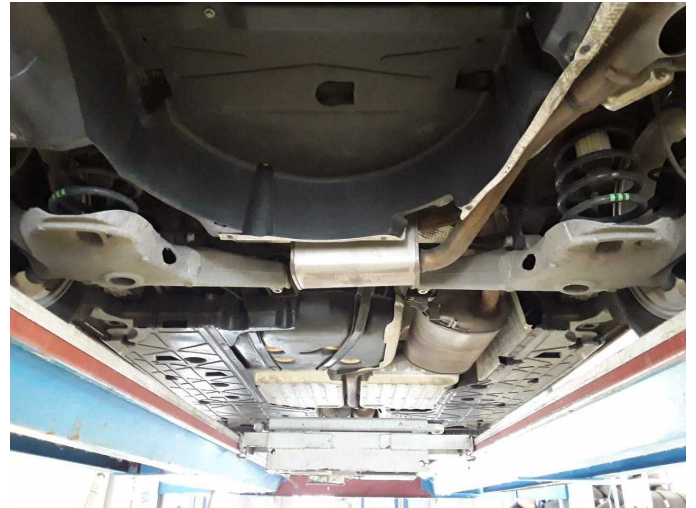


Figure 32: Misc.



Figure 33: Misc.



Figure 34: Misc.



Figure 35: Misc.

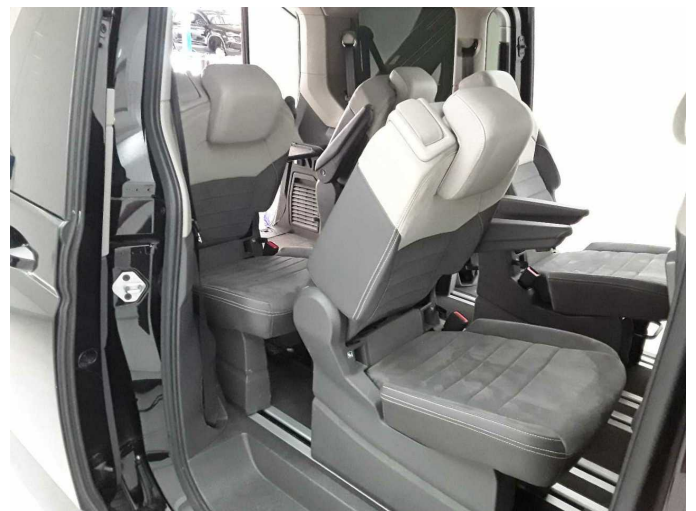


Figure 36: Misc.



Figure 37: Misc.



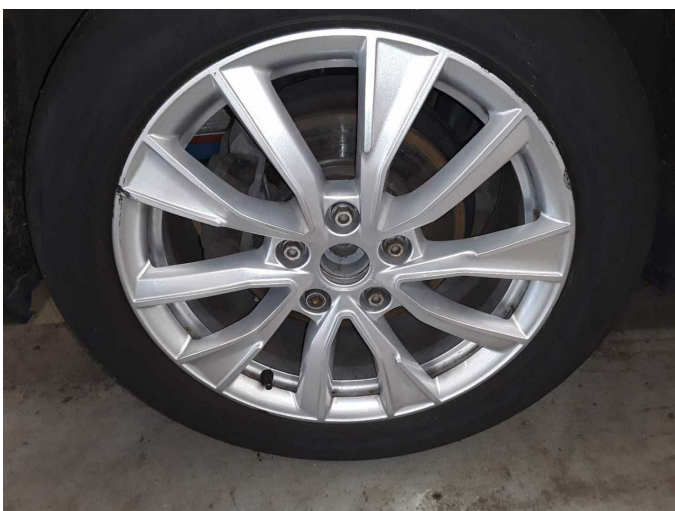
Figure 38: Misc.



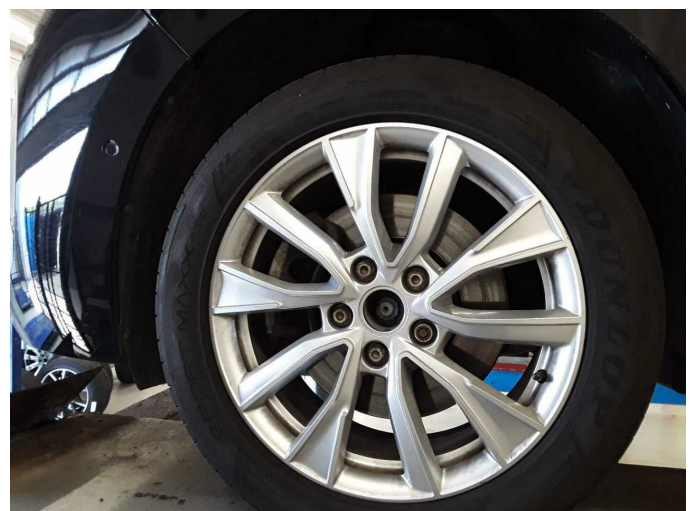
Figure 39: Misc.



Figure 40: Misc.



Damage 1: Wheel / tyres: Wheel cover - rear right side - Missing - Replace



Damage 2: Wheel / tyres: Wheel cover - front left side - Missing - Replace



Damage 3: Sill - right side: Sill (Hinten) - Dent / paintcoat damage - Smart repair



Damage 3: Sill - right side: Sill (Hinten) - Dent / paintcoat damage - Smart repair



Damage 4: Rear bumper: Rear bumper - Scratched - Repair and paint



Damage 4: Rear bumper: Rear bumper - Scratched - Repair and paint



Damage 4: Rear bumper: Rear bumper - Scratched - Repair and paint



Damage 4: Rear bumper: Rear bumper - Scratched - Repair and paint



Damage 4: Rear bumper: Rear bumper - Scratched - Repair and paint



Damage 4: Rear bumper: Rear bumper - Scratched - Repair and paint



Damage 4: Rear bumper: Rear bumper - Scratched - Repair and paint



Damage 5: Front bumper: Front bumper - Scratched - Repair and paint



Damage 5: Front bumper: Front bumper - Scratched - Repair and paint



Damage 6: Bonnet: Bonnet - Dent / paintcoat damage - Repair and paint



Damage 6: Bonnet: Bonnet - Dent / paintcoat damage - Repair and paint



Damage 6: Bonnet: Bonnet - Dent / paintcoat damage - Repair and paint



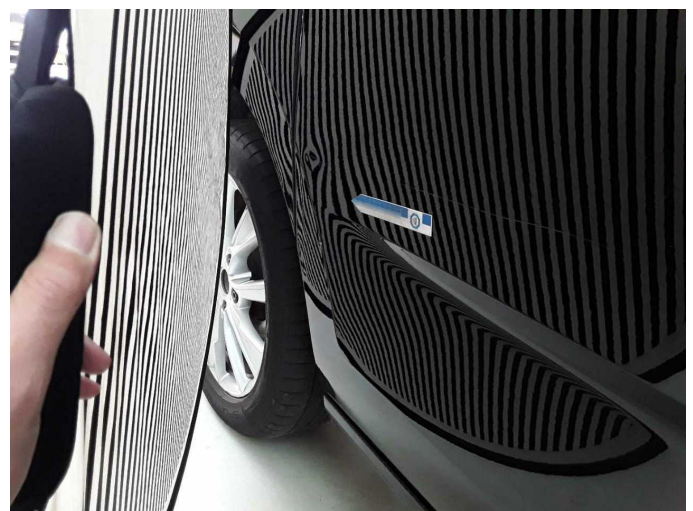
Damage 6: Bonnet: Bonnet - Dent / paintcoat damage - Repair and paint



Damage 6: Bonnet: Bonnet - Dent / paintcoat damage - Repair and paint



Damage 7: Sliding door, right: Sliding door - Dent / paintcoat damage - Repair and paint



Damage 7: Sliding door, right: Sliding door - Dent / paintcoat damage - Repair and paint



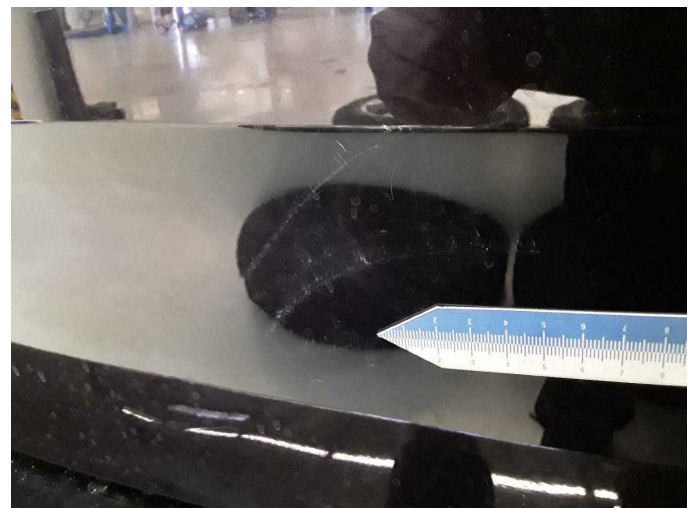
Damage 7: Sliding door, right: Sliding door - Dent / paintcoat damage - Repair and paint



Damage 7: Sliding door, right: Sliding door - Dent / paintcoat damage - Repair and paint



Damage 8: Boot lid / rear door: Boot lid (Unterteil) - Scratch(es) - Repair and paint



Damage 8: Boot lid / rear door: Boot lid (Unterteil) - Scratch(es) - Repair and paint



Damage 8: Boot lid / rear door: Boot lid (Unterteil) - Scratch(es) - Repair and paint



Damage 8: Boot lid / rear door: Boot lid (Unterteil) - Scratch(es) - Repair and paint



Damage 8: Boot lid / rear door: Boot lid (Unterteil) - Scratch(es) - Repair and paint



Wear and tear 1: 2nd wheel set: Alloy rim set - complete - Scratched - No deduction



Wear and tear 3: 2nd wheel set: 1 tyre - Broken / torn - No deduction



Wear and tear 4: Body: Body - dent(s) - No deduction



Wear and tear 4: Body: Body - dent(s) - No deduction



Roof: 269 µm



Roof: 269 µm



Roof: 269 µm



Roof: 269 µm



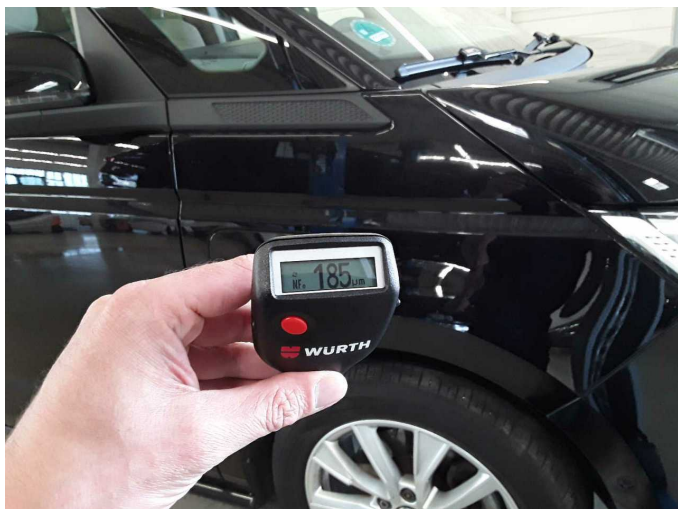
Roof rail - left side: 211 µm



Roof rail - left side: 211 µm



Mudguard - left side: 235 µm



Mudguard - right side: 185 µm



Side panel - rear left side: 213 µm



Wartungshistorie

(gemäß Auftraggeber Informationen)

Fahrgestellnummer: WV2ZZZSTZNH009217

Hersteller / Modell: VOLKSWAGEN VW Multivan T7 Kurz eHybrid Life

Datum	KM-Stand	Beschreibung
07.01.2026	86.835	Motoröl b. Wartung; Ölfilter ern; Regelwartungsdienst; Wartung Sonstiges
23.07.2025	71.999	HU + AU; Motoröl b. Wartung; Ölfilter ern; Ölwechsel; Wartung Sonstiges
18.10.2024	56.971	Bremse Sonstiges; Bremsklötze hinten; Bremsklötze vorne; Bremsscheiben hinten; Bremsscheiben vorne; Getriebeöl ern/prüfen; Motoröl b. Wartung; Ölfilter ern; Regelwartungsdienst; Systemtest/Eigendiagnose; Wartung Sonstiges; Zündkerzen ern
26.04.2024	43.023	Bremsflüssigkeit; Bremsflüssigkeit ern; Motoröl b. Wartung; Ölfilter ern; Ölwechsel; Wartung Sonstiges
22.09.2023	27.717	Motoröl b. Wartung; Ölfilter ern; Regelwartungsdienst; Wartung Sonstiges
03.02.2023	12.560	Motoröl b. Wartung; Ölfilter ern; Ölwechsel; Wartung Sonstiges