

Expertise

Protocol number: 45991330
Order No. / Reference: 26483297
Inspection date: 16 Jun 2026

Manufacturer: Audi

Model: A4 Avant 40 TDI S tronic S line

VIN: WAUZZZF49NA029927



Vehicle details

Manufacturer / Type / Model / Equipment

Audi A4 Avant 40 TDI S tronic S line

Vehicle Identification number WAUZZZF49NA029927

Mileage (Read) 182,255 km

First registration 24 Mar 2022

Number of holders 1

Power / Engine displacement 150 kw / 1,968 ccm

Fuel type / Cylinder Hybrid Diesel / E / 4

Gearbox / Number of gears Automatic / 7

Type of drive Front drive

Type of vehicle Station wagon

Colour / colour code Terragrau-metallic

Doors / Seats 5 / 5

Upholstery type Cloth / leather combination

Colour of upholstery Black-Anthracite



Vehicle details			
Maintenance booklet / proof	digital proof / complete	Next maintenance in	900 km
Last service on / at	09/2025 at 153,060 km		
Key is / should be	2 / 2	FZG documents	ZB#2 (B) was available (copy), ZB#1 (S) was not available.
		Letter No.	GJ045674
Previous damage / Accident	None detectable	Repainting	None detectable
Inspection conditions	sufficient	Lifting equipment / pit	yes
Test drive	Not performed	Engine function test	Performed
Manufacturer key number/ type code number	0588 / BWG 00368		
Emission standard	EURO6;WLTP;AP;PI/CI; M, N1 I	fine dust sticker	
Permitted total weight	2,175 kg	Empty weight	

Tyres

Mounted tyres				
#	Tyre size	Type of tyre	Manufacturer	Tread depth
1)	225/50 R17 94H	Winter tyres on Light alloy	Pirelli	5mm / 5mm
2)	225/50 R17 94H	Winter tyres on Light alloy	Pirelli	5mm / 5mm
Additional tyres				
#	Tyre size	Type of tyre	Manufacturer	Tread depth
1)	245/40 R18 93Y	Summer tyres on Light alloy	Pirelli	5mm / 5mm
2)	245/40 R18 93Y	Summer tyres on Light alloy	Pirelli	5mm / 5mm
Replacement				
Typ	Tyre size	Type of tyre	Manufacturer	Tread depth
	Tirefit	Expiration date 12/2025		

Legend: Tread depth information for the left tire is listed first, for the right tire it is listed second on the axle in the direction of travel.



Equipment

Standard equipment

- AdBlue tank (12 liters)
- Airbag: Front side airbags and head airbag system
- Anti-lock braking system (ABS)
- Audi connect emergency call & service with Audi connect Remote & Control
- Electrically adjustable and heated exterior mirrors
- Vehicle tool kit
- Fabric headliner
- Black roof rails
- Tachometer
- Electromechanical parking brake
- Electronic Differential Lock (EDS)
- Driver Information System
- electric window regulator
- Windscreen with acoustic glazing
- front and rear floor mats
- Transmission: S tronic 7-speed
- Top speed limited to 210 km/h
- Interior mirror dimming
- ISOFIX child seat attachment and Top Tether for the outer rear seats
- Headrests (5)
- LED taillights
- Steering wheel: Leather steering wheel in 3-spoke design with multifunction
- Mild hybrid
- Non-smoking version
- Radio: MMI Radio plus
- Radio accessories: Digital radio reception (DAB)
- Tire repair kit
- Seats: Rear seat backrest foldable
- Start-stop system
- Glazing: Windscreen in heat-insulating and acoustic glazing
- Central locking "Keyless-Go" without deadbolt
- Airbag for driver and front passenger
- Accent areas matte black
- Traction control (ASR)
- Audi drive select
- Audi pre sense city
- Exterior mirror housings in body color
- third brake light, raised
- S line roof spoiler
- Diesel particulate filter (DPF)
- Door sill trims with aluminum inlay at the front, illuminated, with S lettering
- Electronic Stability Control (ESC)
- Chassis: Sport chassis
- Window channel strips in black (rubber)
- Remote key, without SafeLock
- Cruise control system including speed limiter
- rear window wiper
- Interior lighting
- Child lock
- Automatic air conditioning
- boot floor mat
- Manual cargo cover
- LED headlights
- Steering column, manually adjustable in height and axis
- Light/rain sensor
- front center armrest
- Wheel: Tires optimized for rolling resistance, speed-limited
- Radio accessories: 8 speakers (passive) front and rear
- Tire pressure monitoring system
- Electromechanical power steering
- Seats: Front seats manually adjustable
- First aid kit with warning triangle
- Electronic immobilizer
- Reversible loading floor



Extra equipment

- AdBlue tank (24 liters) (larger tank for AdBlue solution to reduce nitrogen oxides in the exhaust gas using an SCR system)
- Ambient Lighting Package (Interior lighting in the front roof module including capacitively switched reading lights, ambient lighting on the center console, illuminated vanity mirrors, glove compartment light, passive door warning lights, left/right trunk light, approach lighting in the exterior door handles, illuminated entry lights, illuminated front cupholders, front/rear footwell lighting, illuminated interior door handles, ambient door lighting, ambient lighting of the front center console)
- Comfort center armrest in the front (adjustable in tilt and longitudinally movable)
- Decorative inlays in matt brushed aluminum (for dashboard, door panels and center console)
- Electrically adjustable, heated, and folding exterior mirrors, automatically dimming on both sides, with memory function (including curb view function for the passenger-side exterior mirror with integrated LED turn signal, including heated windshield washer nozzles, aspherical mirror glass. The curb view function tilts the passenger-side exterior mirror downwards when reverse gear is engaged, providing the driver with a better view of the curb.)
- Front seat heating (heats seat and backrest center panels; with leather upholstery, sport seats and S sport seats also seat side bolsters - individually adjustable in multiple stages for driver and front passenger side via the climate control unit)
- High-beam assist (within the system's limitations, it automatically detects oncoming headlights, taillights of other road users, and light sources in built-up areas. Depending on the traffic situation, the high beams are automatically switched on or off. The system thus improves the driver's visibility and increases comfort.)
- LED headlights and LED taillights with dynamic turn signals (daytime running lights, low beam, high beam, position lights, turn signals, cornering lights, all-weather lights, maneuvering lights, motorway lights (extended range from 110 km/h), static cornering lights, automatic dynamic headlight range control, intersection lights (in conjunction with MMI Navigation) - turn signals, brake lights, tail lights, reversing lights and rear license plate lights in LED technology. - brake lights in LED technology)
- Paint finish: Metallic
- Parking aid plus (Acoustic and visual parking aid front and rear assists with parking and maneuvering. With selective, visual display of the distance to detected objects in the MMI display, depending on the current steering angle and direction of travel. The virtual lane indicator also provides lateral guide lines that are calculated in advance based on the currently selected steering angle. Measurement is carried out by ultrasonic sensors, discreetly integrated into the bumpers.)
- Audi connect Navigation & Infotainment (Navigation with Google Satellite Map - Online search for navigation destinations - Online voice input - Online traffic information - Online traffic information plus - Online points of interest - On-street parking - Hazard information - Online traffic sign information - myAudi Navigation - Highly detailed 3D city display - Amazon Alexa integration - Online media streaming - Online radio - Hybrid radio - Weather information - Online news - Wi-Fi hotspot - User profiles)
- Black Optics Package Plus (Black optics package with Audi rings front and rear and model designation on the rear in black. On the S model, the model designation in the radiator grille is also finished in black/red.)
- Business Package (MMI Navigation plus with MMI touch (including driver information system with color display) - Audi phone box - Leather steering wheel in 3-spoke design with multifunction plus - Heated front seats - Automatically dimming, frameless interior mirror - Electrically adjustable, heated and folding exterior mirrors, automatically dimming on both sides - Rear parking aid - High-beam assistant - Manual sunshade for the rear door windows)
- Cigarette lighter and ashtray (cigarette lighter, removable ashtray with lid)
- Deletion of model designation and performance/technology lettering
- Driver information system with color display (high-resolution 7" color display - display content: speed, time, mileage, outside temperature, fuel warning with remaining range, gear shift indicator, current radio station or music track, radio and media lists, telephone menu (in conjunction with multifunction steering wheel), navigation information (if equipped). On-board computer with short- and long-term memory - including break recommendation)
- Electrically operated tailgate (The tailgate can be opened electrically by pressing the button on the vehicle key, in the driver's door, or the soft-touch button on the tailgate handle. Closing the tailgate is just as easy and convenient: simply press the button on the inside of the tailgate, the button in the driver's door, or the button on the vehicle key. A soft-close mechanism makes manual closing easier when necessary.)
- Front sports seats (with manual adjustment of seat height, seat longitudinal position, seat tilt, backrest tilt, headrest and belt height; with pronounced seat side bolsters for better lateral support in curves, extendable thigh support)
- Fuel tank with increased filling volume (54 l)
- Glazing: Privacy glazing (tinted windows) (rear window, rear door and side windows tinted)
- Radio accessories: Audi sound system (10 speakers including center speaker and subwoofer - 6-channel amplifier - total output of 180 watts)



- S line interior package (sports seats in front - S line seat covers in black fabric/leather combination with S embossing on the front seat backrests - 3-spoke leather steering wheel with multifunction plus in black (perforated leather steering wheel grips) with S emblem; with contrast stitching color-coordinated with the respective interior color; with shift paddles - matte brushed aluminum trim - black glass-look accents - illuminated front door sills with aluminum inserts - stainless steel pedals and footrest - front floor mats - black fabric headliner)
- Seat covers in Sequenz fabric/leather (seat center panels in Sequenz fabric black, seat side bolsters and headrest center panels in black leather with contrasting stitching - with S embossing in the backrests of the front seats)
- Telephone: Audi Phone Box (features as per Bluetooth interface; additional functions: - inductive charging function (Qi standard) with 5 watts including forget-to-charge warning and charging status display in the MMI - telephone cradle measuring 170 × 87 mm in the front center armrest - hands-free calling with up to 2 connected mobile phones possible including vehicle-internal coupling antenna for connecting the mobile phone to the external antenna, resulting in low radiation in the vehicle interior and significantly improved reception quality; with LTE support)
- Roof: Panoramic glass roof (2-piece; electric operation for tilting and opening the front glass element; with tinted glass insert and an electrically operated sunshade for front and rear passengers, as well as comfort closing/opening via the vehicle key; ensures a light-flooded interior ambience; improves the interior climate through efficient ventilation, including integrated wind deflector)
- Seats: Electrically adjustable front seats including memory function for the driver's seat (electric adjustment of seat height, seat longitudinal position, seat and backrest tilt with memory function for driver's side, 2 memory locations per personal user profile for the electrically adjustable front seats and the exterior mirrors, electric 4-way lumbar support)
- Steering wheel: Leather steering wheel in a 3-spoke design with multifunction plus (The steering wheel impresses with its high-quality look and aluminum trim and feels good in the hand. Height and reach of the steering wheel are manually adjustable. For convenient operation of the extensive standard and optional infotainment features, the steering wheel is equipped with 12 multifunction buttons. It also includes paddle shifters for manually changing gears with an automatic transmission.)
- Wheel: Audi Sport light alloy wheels, 10-Y-spoke, black, diamond-turned (8 J x 18 with 245/40 R 18 tires)
- Wheel: Deselect low rolling resistance tires, remove speed limiter (18 inch) (Tires 245/40 R 18 93Y)

Brief expert findings

Documents submitted	At the time of the inspection, the vehicle registration certificate Part 2 (title) was available, but the vehicle registration certificate Part 1 (document) was not. (Copy)
VIN comparison	The vehicle identification number (VIN) was read from the vehicle and its conformity with the submitted documents was confirmed by the undersigned during the inspection.
Inspection	The inspection conditions were sufficient for the assessment of the vehicle. Lifting equipment and/or a pit were available for examining the vehicle.
Test drive	No test drive/shunting maneuver was carried out during the inspection of the vehicle.
Engine function test	An engine test run was performed.

Value reducing factors

No.	Component group	Description
1	Equipment	Tirefit filler - Expired - Replace
2	Door - front left side	Door - Scratch(es) - Smart repair
3	Side panel - rear right side	Sill - Scratch(es) - Smart repair
4	Seat - front	Seat cover - left side - Holes - Smart repair
5	Interior	Interior (Zigarettenrauch) - Odour - Ozone treatment
6	Rear bumper	Rear bumper - Scratch(es) - Paint
7	Front bumper	Front bumper (+ Luffführung mitte erneuern) - Deformed - Paint
8	Vehicle glazing	Windscreen (Rissbildung) - Stone chips - Replace



Wear and tear

No.	Component group	Description
1	Bonnet	Bonnet - Stone chips - No deduction
2	Mudguard - right side	Mudguard - right side - Stone chips - No deduction
3	Door - rear left side	Door - dent(s) - No deduction

The vehicle shows signs of wear and tear commensurate with its age and use.

Order/Scope of Order

An order was placed to prepare a sales report for the described vehicle. This report includes the following:

- Description of key vehicle information
- Documentation of equipment features
(Delivery by third-party service providers)
- Documentation of damage, defects, missing parts
- Documentation of prior damage, unrepaired prior damage, repainting
- A brief visual or functional inspection of the equipment details, if possible.
(Functional testing of driver assistance systems is not included in the scope of services!)
- a photographic documentation of the vehicle

Basis for the order

This product is based on the guidelines for vehicle returns and valuations published by Alphabet Fleet GmbH. The expert makes the specific findings in each individual case objectively, within the framework of the prescribed standards, based on their own expertise.

The vehicle inspection takes place in a fully assembled, unassembled state.

Damage or defects that can only be detected during disassembly/diagnostic work or through further investigation remain within the realm of prognostic risk. An increased risk exists due to concealed defects caused by fraudulent misrepresentation and which were not identifiable by the expert.

Damage or defects resulting from normal use or wear and tear of the vehicle will be accepted in accordance with the applicable standard.

There was no explicit identification or monetary consideration of the expected features within the product.

Features which, in their nature and extent, slightly exceed normal use but do not constitute unacceptable damage, will be documented and indicated as signs of wear, if applicable.

Damage or defects that, according to the applicable standard, can no longer be attributed to normal use or wear and tear are listed under "Value Reducing Factors" in the product description.

Depending on the product specification, a monetary ID can be provided. If this takes place, the costs can be 100% or pro rata depending on the vehicle's age and mileage.

Previous damages

No apparent prior damage that had been repaired could be found on the vehicle.

Comments

Der montierte Winterradsatz ist kein Bestandteil der Ausstattung.



Figure 1: Diagonal front (left)



Figure 2: Diagonal front (right)



Figure 3: Diagonal rear (left)



Figure 4: Diagonal rear (right)

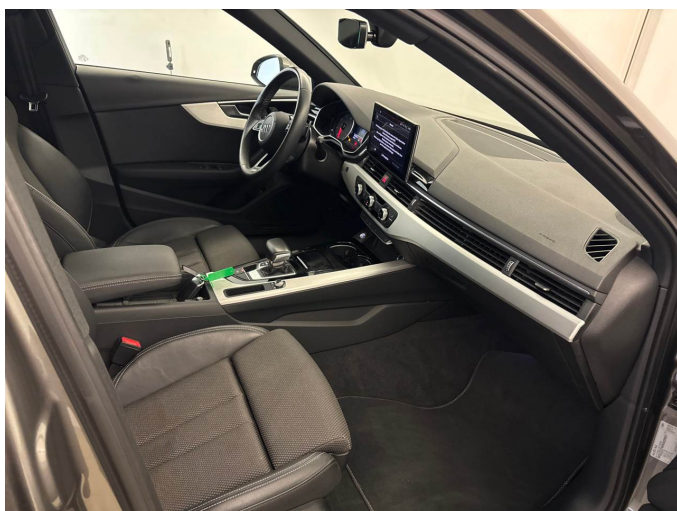


Figure 5: Interior - front

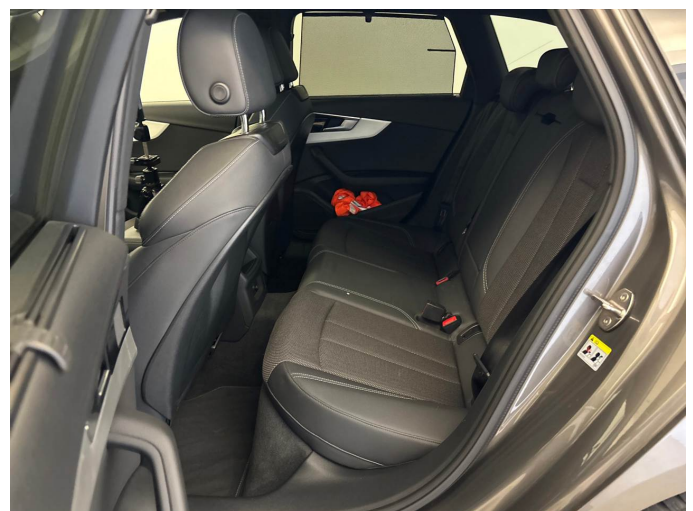


Figure 6: Interior - rear



Figure 7: Instrument cluster



Figure 8: Instrument panel



Figure 9: Interior 360° view



Figure 10: Cargo area

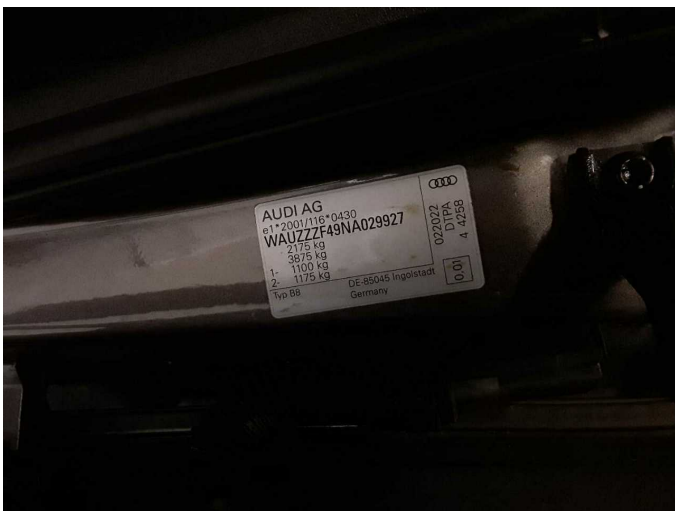


Figure 11: VIN



Figure 12: Mounted tyres



Figure 13: Documents



Figure 14: Additional tyres



Figure 15: Navigation



Figure 16: Misc.



Figure 17: Misc.



Figure 18: Misc.



Figure 19: Misc.



Figure 20: Misc.



Figure 21: Misc.

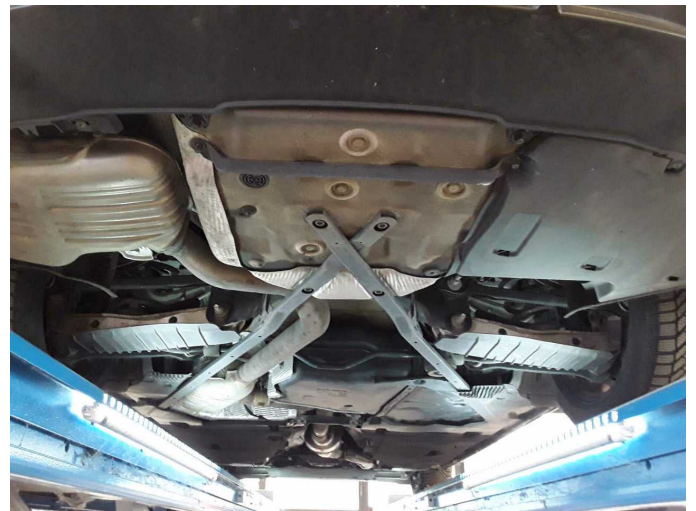


Figure 22: Misc.



Figure 23: Misc.



Figure 24: Misc.



Figure 25: Misc.



Figure 26: Misc.



Figure 27: Misc.

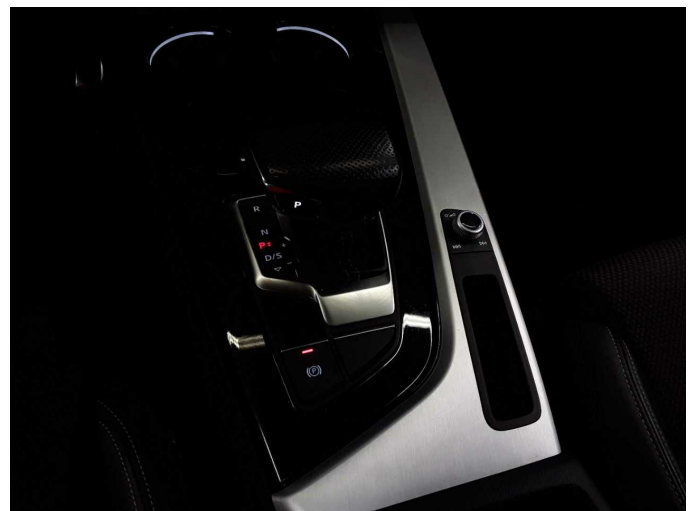


Figure 28: Misc.



Damage 1: Equipment: Tirefit filler - Expired - Replace



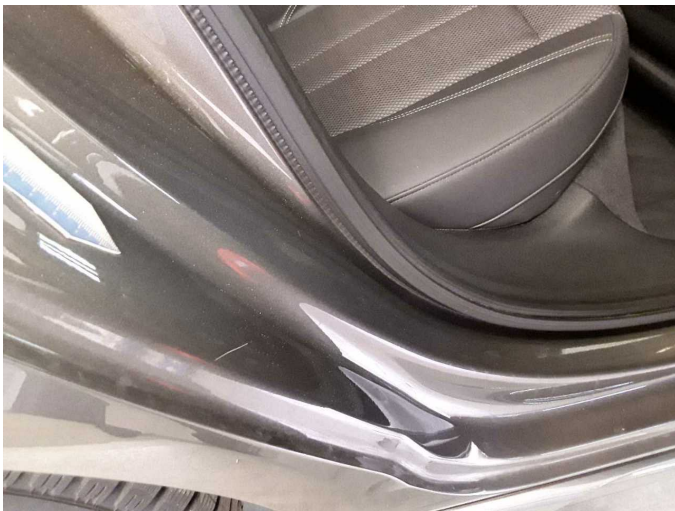
Damage 2: Door - front left side: Door - Scratch(es) - Smart repair



Damage 2: Door - front left side: Door - Scratch(es) - Smart repair



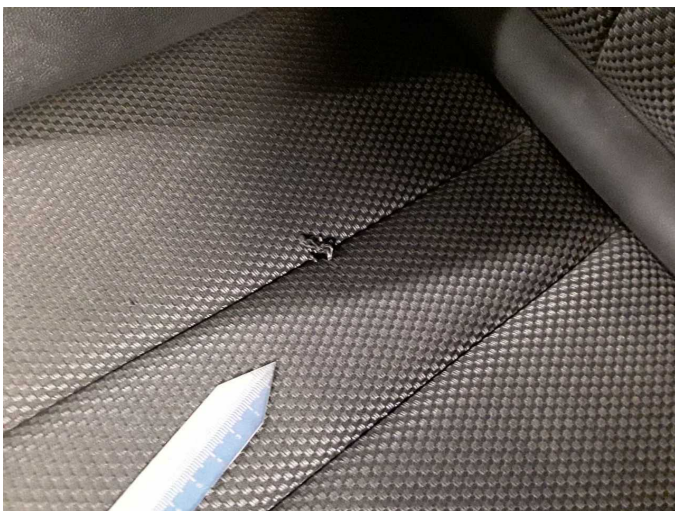
Damage 3: Side panel - rear right side: Sill - Scratch(es) - Smart repair



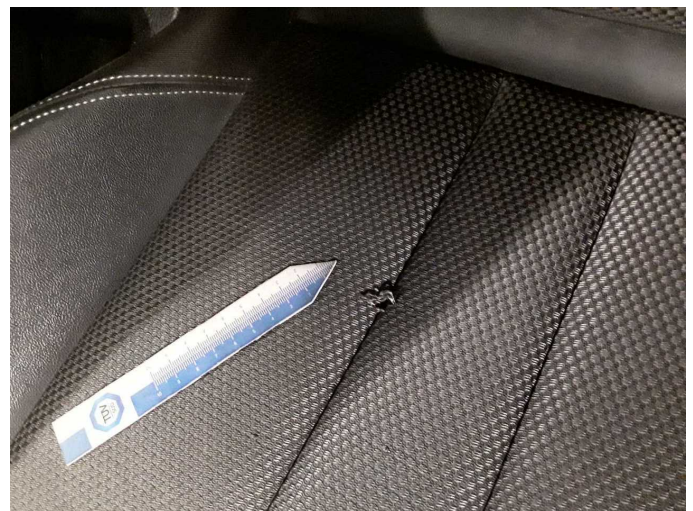
Damage 3: Side panel - rear right side: Sill - Scratch(es) - Smart repair



Damage 4: Seat - front: Seat cover - left side - Holes - Smart repair



Damage 4: Seat - front: Seat cover - left side - Holes - Smart repair



Damage 4: Seat - front: Seat cover - left side - Holes - Smart repair



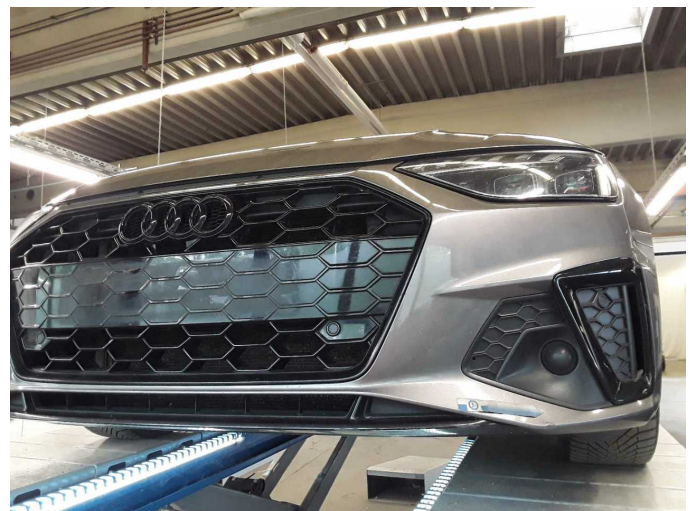
Damage 6: Rear bumper: Rear bumper - Scratch(es) - Paint



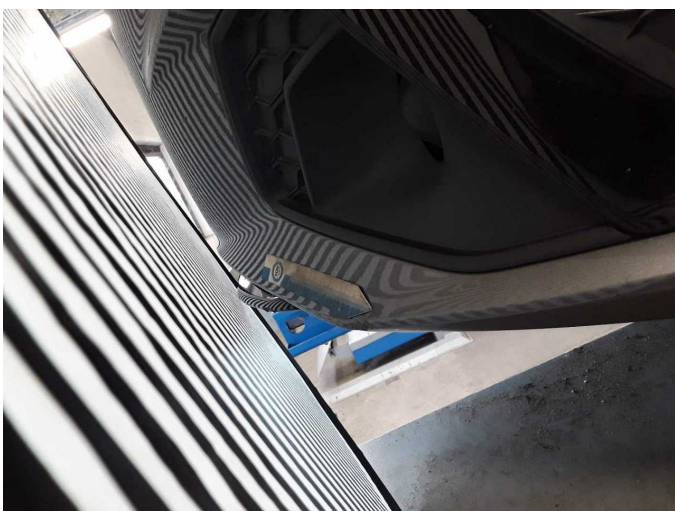
Damage 6: Rear bumper: Rear bumper - Scratch(es) - Paint



Damage 6: Rear bumper: Rear bumper - Scratch(es) - Paint



Damage 7: Front bumper: Front bumper (+ Luftführung mitte erneuern) - Deformed - Paint



Damage 7: Front bumper: Front bumper (+ Luftführung mitte erneuern) - Deformed - Paint



Damage 7: Front bumper: Front bumper (+ Luftführung mitte erneuern) - Deformed - Paint



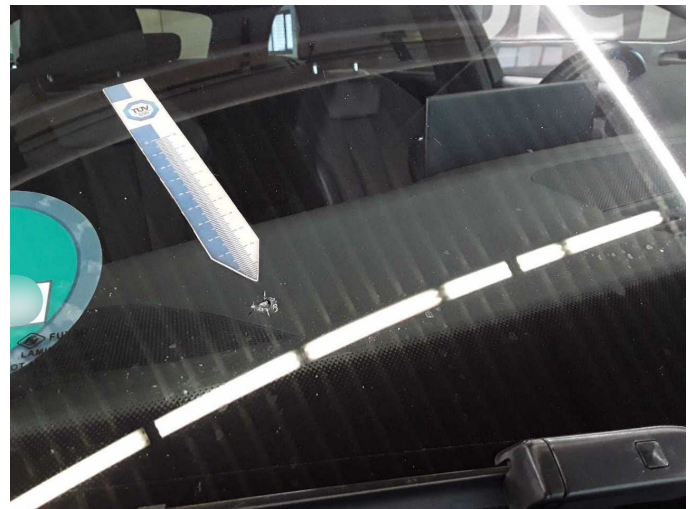
Damage 7: Front bumper: Front bumper (+ Luftführung mitte erneuern) - Deformed - Paint



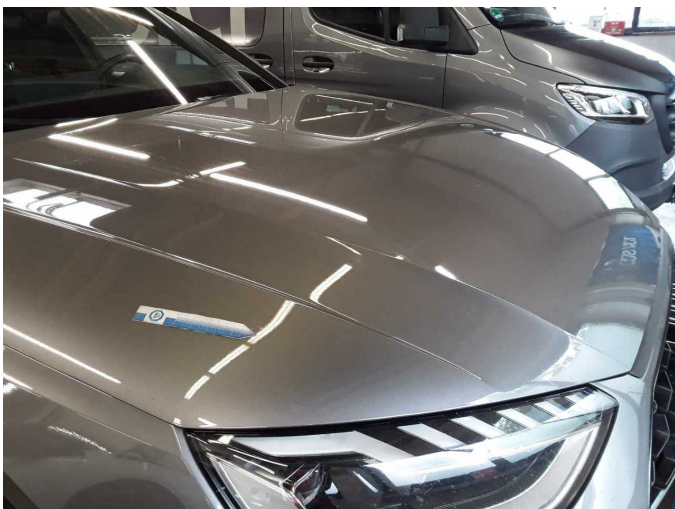
Damage 8: Vehicle glazing: Windscreen (Rissbildung) - Stone chips - Replace



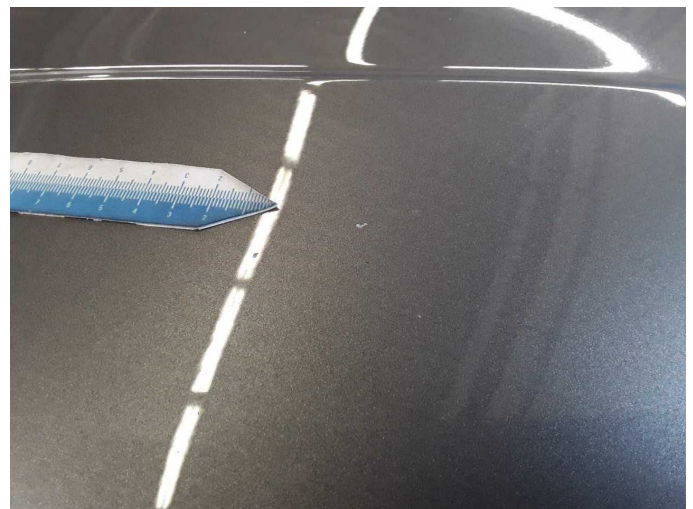
Damage 8: Vehicle glazing: Windscreen (Rissbildung) - Stone chips - Replace



Damage 8: Vehicle glazing: Windscreen (Rissbildung) - Stone chips - Replace



Wear and tear 1: Bonnet: Bonnet - Stone chips - No deduction



Wear and tear 1: Bonnet: Bonnet - Stone chips - No deduction



Wear and tear 3: Door - rear left side: Door - dent(s) - No deduction



Wear and tear 3: Door - rear left side: Door - dent(s) - No deduction



Wartungshistorie

(gemäß Auftraggeber Informationen)

Fahrgestellnummer: WAUZZZF49NA029927
Hersteller / Modell: AUDI AUDI A4 Avant 40 TDI S tronic S line

Datum	KM-Stand	Beschreibung
16.09.2025	153.060	Bremsbelagfühler ern; Bremse Sonstiges; Bremsklötze hinten; Bremsklötze vorne; Bremsscheiben + Klötze h; Bremsscheiben + Klötze v; Bremsscheiben hinten; Bremsscheiben vorne; Motoröl b. Wartung; Ölfilter ern; Regelwartungsdienst; Wartung Sonstiges
22.05.2025	135.401	AU
19.12.2024	121.266	Bremsbelagfühler ern; Bremse Sonstiges; Bremsklötze vorne; Getriebeöl ern/prüfen; Kraftstofffilter ern; Motoröl b. Wartung; Ölfilter ern; Regelwartungsdienst; Reparatur Sonstiges; Systemtest/Eigendiagnose; Wartung Sonstiges
29.10.2024	114.967	Systemtest/Eigendiagnose
29.04.2024	90.718	Bremsflüssigkeit; Bremsflüssigkeit ern; Luftfiltereinsatz ern; Motoröl b. Wartung; Ölfilter ern; Regelwartungsdienst; Wartung Sonstiges
26.09.2023	63.443	Reparatur Sonstiges; Systemtest/Eigendiagnose
08.09.2023	61.586	Bremsbelagfühler ern; Bremse Sonstiges; Bremsklötze hinten; Bremsklötze vorne; Bremsscheiben hinten; Bremsscheiben vorne; Getriebeöl ern/prüfen; Kraftstofffilter ern; Ölfilter ern; Regelwartungsdienst; Reparatur Sonstiges; Wartung Sonstiges
20.12.2022	32.691	Motoröl b. Wartung; Ölfilter ern; Regelwartungsdienst; Wartung Sonstiges