

Expertise

Protocol number: 46138050
Order No. / Reference: 26451131
Inspection date: 25 Jun 2026

Manufacturer: Mercedes-Benz

Model: E 220 d T 9G-TRONIC AMG Line

VIN: W1KZH0EB3PB163420



Vehicle details

Manufacturer / Type / Model / Equipment

Mercedes-Benz E 220 d T 9G-TRONIC AMG Line

Vehicle Identification number	W1KZH0EB3PB163420
Mileage (Read)	145,498 km
First registration	17 Jul 2023
Number of holders	1
Next periodical technical inspection	07/2026 (Report not on hand)

Power / Engine displacement	147 kw / 1,993 ccm
------------------------------------	--------------------

Fuel type / Cylinder	Hybrid Diesel / E / 4
-----------------------------	-----------------------

Gearbox / Number of gears	Automatic / 9
----------------------------------	---------------

Type of drive	Rear drive
----------------------	------------

Type of vehicle	Station wagon
------------------------	---------------

Colour / colour code	OBSIDIANSCHWARZ - METALLICLACK
-----------------------------	-----------------------------------

Doors / Seats	5 / 5
----------------------	-------

Upholstery type	Part leather
------------------------	--------------

Colour of upholstery	Black-Anthracite
-----------------------------	------------------

Re-import	no
------------------	----

readiness to drive	Roadworthy
---------------------------	------------



Vehicle details			
Maintenance booklet / proof	digital proof / complete	Next maintenance in	268 Tag(e)
Last service on / at	03/2026 at 128,789 km		
Key is / should be	2 / 2	FZG documents	ZB#2 (B) was available (copy), ZB#1 (S) was not available.
		Letter No.	GV713369
Previous damage / Accident	Detectable	Repainting	Detectable
Inspection conditions	sufficient	Lifting equipment / pit	yes
Test drive	Not performed	Engine function test	Performed
readiness to drive	Roadworthy		
Manufacturer key number/ type code number	2222 / BEG 00113		
Emission standard	EURO6;WLTP;AP;PI/CI; M, N1 I	fine dust sticker	
Permitted total weight	2,525 kg	Empty weight	

Tyres

Mounted tyres				
#	Tyre size	Type of tyre	Manufacturer	Tread depth
1)	245/45 R18 100Y	Summer tyres on Light alloy	Pirelli	6mm / 6mm
2)	275/40 R18 103Y	Summer tyres on Light alloy	Continental	4mm / 4mm
Additional tyres				
#	Tyre size	Type of tyre	Manufacturer	Tread depth
1)	245/45 R18 100V	Winter tyres on Light alloy	Pirelli	5mm / 5mm
2)	245/45 R18 100V	Winter tyres on Light alloy	Continental	5mm / 5mm

Legend: Tread depth information for the left tire is listed first, for the right tire it is listed second on the axle in the direction of travel.



Equipment

Standard equipment

- ADAPTIVE BRAKE with hill start assist, pre-filling and drying braking in wet conditions
- Airbag: Automatic passenger airbag deactivation
- Airbag: Side airbag for driver and front passenger
- Premium ambient lighting with 64 colors and 3 color zones
- AMG sports pedal assembly made of brushed stainless steel with rubber studs
- Foldable armrest for driver and front passenger
- Left and right exterior mirrors, heated and electrically adjustable, painted in body color
- Brake assist, active
- Tachometer
- DYNAMIC SELECT
- EASY-PACK tailgate
- Chassis: AGILITY CONTROL chassis with selective damping system and lowered suspension
- Transmission: 9-speed automatic, 9G-TRONIC
- Heated rear window with timer
- Black fabric headliner
- KEYLESS START
- THERMATIC automatic climate control
- Paint finish: Solid
- LED High Performance Headlights
- Steering wheel: Multifunction sports steering wheel in black Nappa leather
- Mercedes-Benz emergency call system
- Center console with on-the-fly storage compartment
- Navigation: Hard disk navigation
- Package: Storage
- Package: Seating comfort
- PRE-SAFE system
- Radio: MBUX multimedia system
- Radio accessories: Communication module (LTE) for using Mercedes me connect services
- Windscreen wipers with rain sensor
- Seats: i-Size child seat attachment
- Seats: Front sports seats
- Touchpad
- Electronic immobilizer
- Central locking
- AdBlue tank with a capacity of 23.5 liters
- Airbag for driver and front passenger
- Airbag: Kneebag for driver
- Airbag: Windowbags left/right
- AMG floor mats in black with AMG lettering
- Anti-lock braking system (ABS)
- Traction control (ASR)
- Attention Assist
- Basic services
- On-board computer
- Diesel particulate filter
- Third brake light
- EASY-PACK cargo cover including EASY-PACK safety net
- Electronic Stability Program (ESP)
- Chassis: Air suspension on the rear axle with level control
- Electric window regulator with comfort operation and anti-pinch protection, 4-way
- rear window wiper
- Instrument panel and door sills in ARTICO man-made leather
- Headrests 5-way adjustable for driver and front passenger, 4-way adjustable, and 2-way adjustable in the rear.
- Steering column mechanically adjustable in height and length
- Center console piano black finish
- Navigation accessories: Pre-installation for Live Traffic Information
- Package: AMG Line Exterior
- Upholstery: ARTICO leatherette/DINAMICA microfiber
- Radio: Extended MBUX functions
- Radio accessories: Digital radio
- Tire pressure monitoring system
- Remote Services Plus
- Power steering
- Seats: Rear seat backrests foldable, 40/20/40 split
- Power outlet: 12V socket in the cargo area
- High-visibility vest for drivers
- Green, heat-insulating glass all around
- Decorative elements: aluminum with longitudinal brushing, light finish



Extra equipment

- GUARD 360° Vehicle Protection Plus (Break-in and theft warning - Towing protection with visual and audible warning upon detected change in position - Audible alarm - Interior monitoring (triggers upon movement inside the vehicle) - Assistance with vehicle theft (theft assistance), free for 3 years from activation - Emergency key deactivation, free for 3 years from activation - GUARD 360° label on the front side windows - Collision detection, free for 3 years from activation, additionally with camera images in conjunction with 360°)
- Package: Driving Assistance Package (Active Distance Assist DISTRONIC incl. Active Speed Limit Assist, Extended Automatic Restart on Highways, Route-Based Speed Adaptation with Traffic Jam Function (only when selecting Parking Packages), Active Steering Assist incl. Active Emergency Stop Assist with SOS Function, Emergency Lane Radio, Active Brake Assist incl. Turning and Intersection Radio, Traffic Jam Emergency Brake Radio, Evasive Steering Assist, Active Lane Keeping Assist, Active Blind Spot Assist incl. Exit Warning, Pedestrian Warning Radio, PRE-SAFE PLUS)
- Package: Parking package with 360° camera (including Active Parking Assist with PARKTRONIC and 360° camera)
- Package: Sun protection package (mechanical sunshade in rear doors left and right - extendable sun visors with make-up mirror for driver and front passenger)
- Package: Mirrors (both exterior mirrors electrically foldable (button in the driver's door control panel) - automatic lowering of the passenger-side mirror glass to parking position when reverse gear is engaged - interior mirror and driver's side exterior mirror automatically dimming continuously - ambient lighting of the exterior mirror to illuminate the entry area)
- Power outlet: 2 USB ports in the rear with charging function
- Glazing: Heat-insulating dark tinted glass all around from the B-pillar (the use of heat-insulating dark tinted glass for the rear side windows and rear window protects rear passengers from prying eyes and direct sunlight - the dark tint also emphasizes the sportiness of the vehicle)
- Paint finish: Metallic
- Center console wood ash black open pore
- Package: Business (MBUX High-End Package - Connectivity Package Navigation - Traffic Sign Assist - Smartphone Integration (Apple CarPlay and Android Auto) - Preparation for Digital Key Handover - Widescreen Cockpit - Wireless Charging System for Mobile Devices - MBUX Augmented Reality for Navigation - Heated Seats for Driver and Front Passenger - Parking Package with Rearview Camera - Fuel Tank with 66 Liter Capacity (916) (60l for Diesel Plug-in Hybrids).)
- Package: KEYLESS-GO Comfort Package (vehicle key with KEYLESS-GO functionality - KEYLESS-GO access and drive authorization system - start/stop button - comfort opening and closing - door handles with chrome inlay - HANDS-FREE ACCESS - handle recess lighting - remote trunk lid closing)
- Package: Night for AMG Line Exterior (18-inch AMG light-alloy wheels in 5-twin-spoke design, painted high-gloss black and polished with front axle 245/45 R 18 on 8 J x 18 ET 43, rear axle 275/40 R 18 on 9 J x 18 ET 53 - AMG front apron with front splitter in high-gloss black - Belt trim strip, window surround and trim strip in the rear bumper in high-gloss black - Exterior mirror housings in high-gloss black - Roof rails in black - Heat-insulating dark tinted glass from the B-pillar)
- Wheels: 18-inch (45.7 cm) AMG light-alloy wheels in a 5-twin-spoke design, high-gloss black finish. (High-sheen finish, front axle: 8 J x 18 ET 43, tire size 245/45 R 18; rear axle: 9 J x 18 ET 53, tire size 275/40 R 18)
- Seats: Heated seats for driver and front passenger (selectable in three stages - Intelligent and comfortable: The seat heating switches off automatically)
- Ambient lighting with projection of the brand logo (one LED projector in each front door - taking over the function of the exit lights)
- Type designation removed from trunk lid
- Decorative elements, wood, ash, black, open-pore

Brief expert findings

Documents submitted	At the time of the inspection, the vehicle registration certificate Part 2 (title) was available, but the vehicle registration certificate Part 1 (document) was not. (Copy)
VIN comparison	The vehicle identification number (VIN) was read from the vehicle and its conformity with the submitted documents was confirmed by the undersigned during the inspection.
Inspection	The inspection conditions were sufficient for the assessment of the vehicle. Lifting equipment and/or a pit were available for examining the vehicle.
Test drive	No test drive/shunting maneuver was carried out during the inspection of the vehicle.
Engine function test	An engine test run was performed.
readiness to drive	The vehicle was roadworthy at the time of inspection.



Value reducing factors

No.	Component group	Description
1	Door - rear right side	Door - Scratch(es) - Smart repair
2	Door - front left side	Door - Scratch(es) - Smart repair
3	Front bumper	Front bumper - Scratch(es) - Smart repair
4	Side panel - rear right side	Side panel - Dent / paintcoat damage - Smart repair
5	Bonnet	Bonnet - Stone chips - Smart repair
6	Sill - left side	Trim - Scratched - Repair and paint
7	Vehicle glazing	Windscreen - Stone chips - Replace

Wear and tear

No.	Component group	Description
1	Rear bumper	Rear bumper - Scratch(es) - No deduction
2	2nd wheel set	1 alloy rim - Scratched - No deduction
3	2nd wheel set	1 alloy rim - Scratched - No deduction
4	2nd wheel set	1 alloy rim - Scratched - No deduction
5	2nd wheel set	Wheel cover set - complete - Missing - No deduction

The vehicle shows signs of wear and tear commensurate with its age and use.

Previous damages

No.	Previous damage	Extent of damage (Net)
1	Rear, Provided by user / customer, from 27 Oct 2023	2.940,46 €
2	Side right, Provided by user / customer, from 18 Dec 2023	5.808,64 €

Repainting

No.	Repainting
1	Roof rail - right side, Boot lid / rear door, Side panel - rear right side, Door - rear right side, Door - front right side, Professionally carried out

Paint coat thickness measurement

Roof rail - right side	221 µm	Boot lid / rear door	209 µm
Side panel - rear right side	1,010 µm	Door - rear right side	172 µm
Door - front right side	219 µm		

Order/Scope of Order

An order was placed to prepare a sales report for the described vehicle. This report includes the following:

- Description of key vehicle information
- Documentation of equipment features
(*Delivery by third-party service providers*)
- Documentation of damage, defects, missing parts
- Documentation of prior damage, unrepaired prior damage, repainting
- A brief visual or functional inspection of the equipment details, if possible.
(*Functional testing of driver assistance systems is not included in the scope of services!*)
- a photographic documentation of the vehicle



Basis for the order

This product is based on the guidelines for vehicle returns and valuations published by Alphabet Fleet GmbH. The expert makes the specific findings in each individual case objectively, within the framework of the prescribed standards, based on their own expertise.

The vehicle inspection takes place in a fully assembled, unassembled state.

Damage or defects that can only be detected during disassembly/diagnostic work or through further investigation remain within the realm of prognostic risk. An increased risk exists due to concealed defects caused by fraudulent misrepresentation and which were not identifiable by the expert.

Damage or defects resulting from normal use or wear and tear of the vehicle will be accepted in accordance with the applicable standard.

There was no explicit identification or monetary consideration of the expected features within the product.

Features which, in their nature and extent, slightly exceed normal use but do not constitute unacceptable damage, will be documented and indicated as signs of wear, if applicable.

Damage or defects that, according to the applicable standard, can no longer be attributed to normal use or wear and tear are listed under "Value Reducing Factors" in the product description.

Depending on the product specification, a monetary ID can be provided. If this takes place, the costs can be 100% d or pro rata depending on the vehicle's age and mileage.

Previous damages

According to available information previous damages were repaired at the vehicle. Traces of repairs, which allow conclusions about the area of repair, were not recognizable during the inspection.

Comments

- Winterradsatz ist kein Bestandteil des Auslieferungsumfangs.



Figure 1: Diagonal front (left)



Figure 2: Diagonal front (right)



Figure 3: Diagonal rear (left)



Figure 4: Diagonal rear (right)



Figure 5: Interior - front



Figure 6: Interior - rear



Figure 7: Instrument cluster



Figure 8: Instrument panel



Figure 9: Interior 360° view



Figure 10: Cargo area

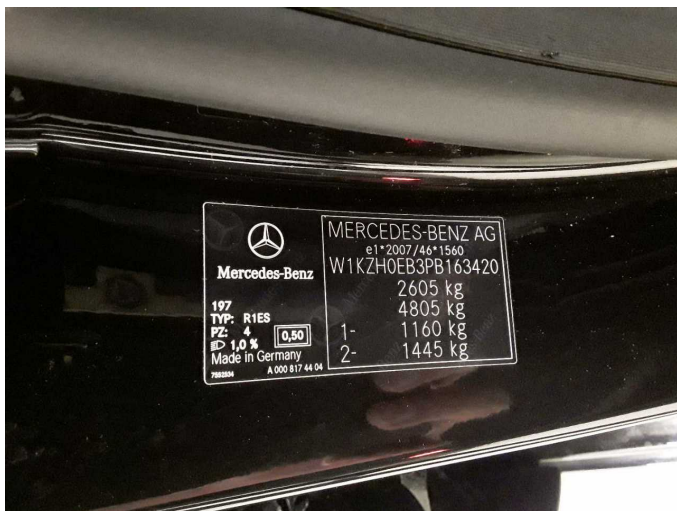


Figure 11: VIN



Figure 12: Mounted tyres



Figure 13: Documents



Figure 14: Documents



Figure 15: Documents



Figure 16: Documents



Figure 17: Additional tyres

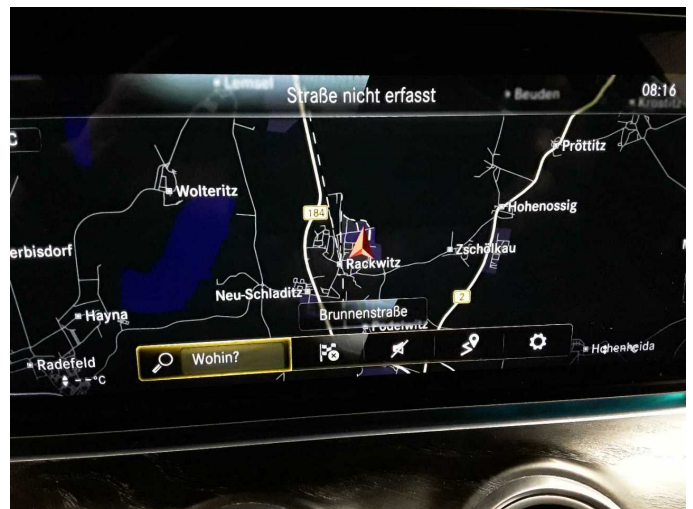


Figure 18: Navigation



Figure 19: Misc.



Figure 20: Misc.



Figure 21: Misc.



Figure 22: Misc.

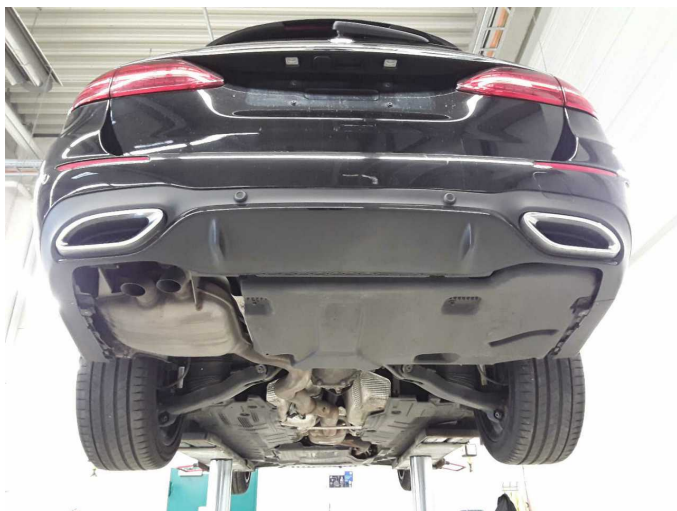


Figure 23: Misc.

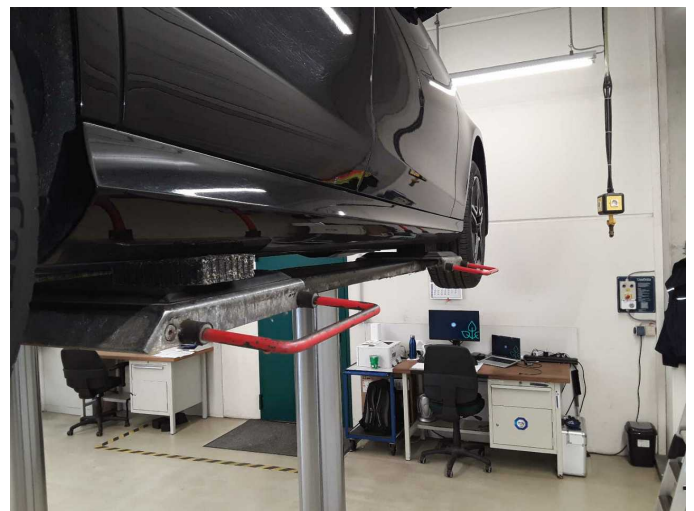


Figure 24: Misc.



Figure 25: Misc.



Figure 26: Misc.



Figure 27: Misc.



Damage 1: Door - rear right side: Door - Scratch(es) - Smart repair



Damage 1: Door - rear right side: Door - Scratch(es) - Smart repair



Damage 2: Door - front left side: Door - Scratch(es) - Smart repair



Damage 2: Door - front left side: Door - Scratch(es) - Smart repair



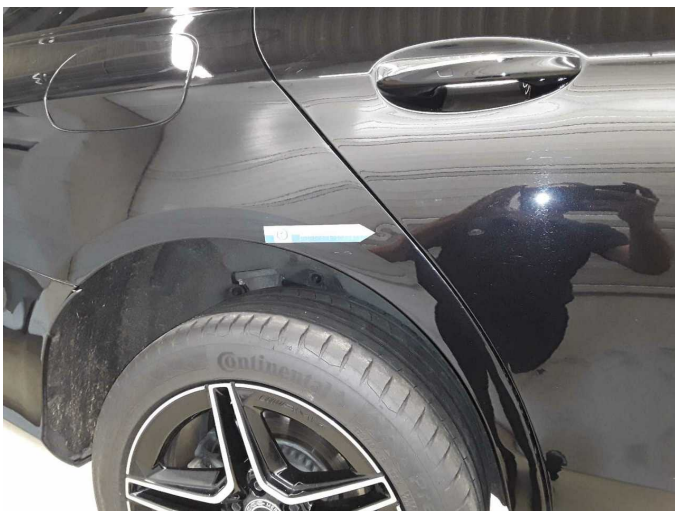
Damage 2: Door - front left side: Door - Scratch(es) - Smart repair



Damage 3: Front bumper: Front bumper - Scratch(es) - Smart repair



Damage 3: Front bumper: Front bumper - Scratch(es) - Smart repair



Damage 4: Side panel - rear right side: Side panel - Dent / paintcoat damage - Smart repair



Damage 4: Side panel - rear right side: Side panel - Dent / paintcoat damage - Smart repair



Damage 5: Bonnet: Bonnet - Stone chips - Smart repair



Damage 5: Bonnet: Bonnet - Stone chips - Smart repair



Damage 6: Sill - left side: Trim - Scratched - Repair and paint



Damage 6: Sill - left side: Trim - Scratched - Repair and paint



Damage 6: Sill - left side: Trim - Scratched - Repair and paint



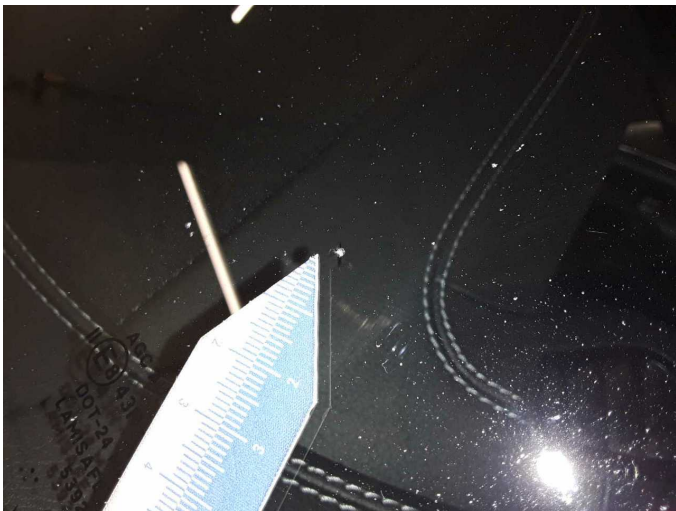
Damage 6: Sill - left side: Trim - Scratched - Repair and paint



Damage 7: Vehicle glazing: Windscreen - Stone chips - Replace



Damage 7: Vehicle glazing: Windscreen - Stone chips - Replace



Damage 7: Vehicle glazing: Windscreen - Stone chips - Replace



Damage 7: Vehicle glazing: Windscreen - Stone chips - Replace



Wear and tear 1: Rear bumper: Rear bumper - Scratch(es) - No deduction



Wear and tear 1: Rear bumper: Rear bumper - Scratch(es) - No deduction



Wear and tear 1: Rear bumper: Rear bumper - Scratch(es) - No deduction



Wear and tear 1: Rear bumper: Rear bumper - Scratch(es) - No deduction



Wear and tear 2: 2nd wheel set: 1 alloy rim - Scratched - No deduction



Wear and tear 2: 2nd wheel set: 1 alloy rim - Scratched - No deduction



Wear and tear 3: 2nd wheel set: 1 alloy rim - Scratched - No deduction



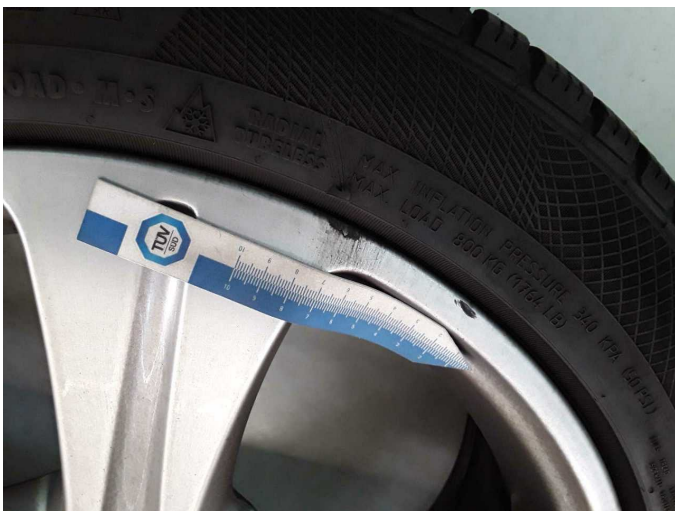
Wear and tear 3: 2nd wheel set: 1 alloy rim - Scratched - No deduction



Wear and tear 3: 2nd wheel set: 1 alloy rim - Scratched - No deduction



Wear and tear 4: 2nd wheel set: 1 alloy rim - Scratched - No deduction



Wear and tear 4: 2nd wheel set: 1 alloy rim - Scratched - No deduction



Wear and tear 5: 2nd wheel set: Wheel cover set - complete - Missing - No deduction



Roof rail - right side: 221 μm



Boot lid / rear door: 209 μm



Boot lid / rear door: 209 µm



Side panel - rear right side: 1,010 µm



Side panel - rear right side: 1,010 µm



Side panel - rear right side: 1,010 µm



Door - rear right side: 172 µm



Door - front right side: 219 µm



Wartungshistorie

(gemäß Auftraggeber Informationen)

Fahrgestellnummer: W1KZH0EB3PB163420
Hersteller / Modell: MERCEDES-BENZ MERCEDES-BENZ E 220 d T 9G-TRONIC
AMG Line

Datum	KM-Stand	Beschreibung
19.03.2026	128.789	Regelwartungsdienst
05.01.2026	111.264	Bremsscheiben+Beläge v+h
05.12.2025	104.752	Regelwartungsdienst
07.05.2025	71.025	Regelwartungsdienst
02.10.2024	46.887	Regelwartungsdienst
12.09.2024	43.969	Bremsinspektion vo + hi
07.03.2024	23.275	Regelwartungsdienst