

Expertise

Protocol number: 46264450
Order No. / Reference: 26509792
Inspection date: 29 Jun 2026

Manufacturer: Ford

Model: S-Max 2.5 Duratec FHEV VIGNALE

VIN: WF0JXXWPCHNB36111



Vehicle details

Manufacturer / Type / Model / Equipment

Ford S-Max 2.5 Duratec FHEV VIGNALE

Vehicle Identification number WF0JXXWPCHNB36111

Mileage (Read) 112,577 km

First registration 9 Nov 2022

Number of holders 1

Power / Engine displacement 110 kw / 2,488 ccm

Fuel type / Cylinder Hybrid Petrol / E / 4

Gearbox / Number of gears Automatic / 1

Type of gearbox CVT

Type of drive Front drive

Type of vehicle Station wagon

Colour / colour code Blue Panther Metallic

Doors / Seats 5 / 7

Upholstery type Leather

Colour of upholstery Black

Re-import no

readiness to drive Roadworthy



Vehicle details

Maintenance booklet / proof	Available / incomplete	Next maintenance in	0 %
Last service on / at	11/2025 at 96,126 km		
Key is / should be	2 / 2	FZG documents	ZB#2 (B) was available (copy), ZB#1 (S) was not available.
		Letter No.	GP454786
Previous damage / Accident	Detectable	Repainting	None detectable
Inspection conditions	sufficient	Lifting equipment / pit	yes
Test drive	Not performed	Engine function test	Performed
readiness to drive	Roadworthy		
Manufacturer key number/ type code number	8566 / BVI 00099		
Emission standard	EURO6;WLTP;AP;PI/CI; M, N1 I	fine dust sticker	
Permitted total weight	2,545 kg	Empty weight	

Tyres

Mounted tyres

#	Tyre size	Type of tyre	Manufacturer	Tread depth
1)	235/55 R17 103V	Winter tyres on Light alloy	Pirelli	3mm / 3mm
2)	235/55 R17 103V	Winter tyres on Light alloy	Pirelli	5mm / 5mm

Additional tyres

#	Tyre size	Type of tyre	Manufacturer	Tread depth
1)	245/45 R19 102V	Summer tyres on Light alloy	Continental	3mm / 3mm
2)	245/45 R19 102V	Summer tyres on Light alloy	Continental	4mm / 4mm

Replacement

Typ	Tyre size	Type of tyre	Manufacturer	Tread depth
Tirefit		Expiration date 09/2026		

Legend: Tread depth information for the left tire is listed first, for the right tire it is listed second on the axle in the direction of travel.



Equipment

Standard equipment

- Adaptive LED headlights (Ford Dynamic LED)
- Anti-lock braking system (ABS)
- Attachment points for safety partition grilles
- Hill start assist
- Overhead console with glasses storage compartment and child observation mirror
- Lane keeping assist including lane keeping assist and driver fatigue warning
- Electronic parking brake
- Ford EasyFold: 2nd row seat backrests fold down electrically at the touch of a button.
- Luggage compartment cover
- Cruise control system with intelligent speed limiter
- Back window, heater
- Interior lighting with delay circuit
- Intelligent Protection System (IPS)
- Electric child safety lock
- Rear headrests (3)
- Radiator grille in special Vignale design with chrome surround
- Steering wheel: Multifunction leather steering wheel
- Reading lights front and rear
- MyKey key system (individually programmable second key)
- Fog lights with LED technology
- Emergency brake light
- Front and rear parking pilot system
- Upholstery: Premium leather with massage function
- Tire repair kit
- Rear view camera
- Windscreen wipers with rain sensor
- Headlight assistant with day/night sensor
- Headlights washer / wiper system
- Side skirts and bumpers painted in body color
- Electromechanical power steering
- Seats: Front seats can be heated individually and variably.
- 230 volt socket
- Trays on the front seatbacks
- Premium carpet floor mats, front and rear
- Lashing eyes in the luggage compartment
- Immobiliser
- Central locking with remote control
- Ambient lighting at the front
- Exterior mirrors painted in body color, electrically adjustable, heated and foldable
- Third brake light
- Roof rails "aluminum look"
- Tachometer
- Electric windows front and rear
- High Beam Assist
- Ford Easy Fuel
- Ford Power start function with Ford Key Free system
- FordPass Connect including eCall and Wi-Fi hotspot
- Luggage compartment lighting
- Transmission: CVT automatic
- Rear window wiper
- Interior mirror, automatically dimming
- Isofix bracket
- Air conditioning with automatic temperature control
- Front headrests, 4-way height and tilt adjustable
- Paint finish: Metallic
- Steering wheel: Steering column, adjustable in height and reach
- Front center console with padded armrest
- Sony navigation system including Ford SYNC 3 with 8" touchscreen
- Package: Winter
- Pedal assembly with aluminum pads
- Radio: Ford SYNC 3
- Tire Pressure Monitoring System (TPMS)
- LED taillights
- Headlight dipped beam with switch-off delay including "greeting function"
- Side windows from the 2nd row of seats and rear window, dark tinted.
- Seats: 2nd row of seats with 3 individual seats (FoldFlat System)
- Power outlet: 12-volt connection in the luggage compartment and in the center console
- Traffic sign recognition system
- Warning system for unfastened seat belts for the 1st and 2nd rows of seats
- Cigarette lighter



Extra equipment

- Detachable towbar (including ESP trailer stabilization)
- Anti-theft alarm system including double locking (with interior monitoring)
- Rear leveling system, automatic
- Panoramic roof (non-opening) (sun protection blinds integrated into the rear side doors - windshield and panoramic roof with "Solar-Reflect" heat protection)
- Safety partition net behind the 2nd row of seats
- Seats: 3rd row of seats with 2 individual seats (Easy FoldFlat System) (seat backrests can be folded down individually at the touch of a button and folded up manually - headrests can be lowered - easy entry to the 3rd row of seats (Easy Entry) - reading lights in the 3rd row of seats, LED)
- Tires: 8 J x 19 alloy wheels (4) with 245/45 R 19 tires (10-spoke design in premium aluminum paint finish, polished)
- Package: Business Package III (Sony navigation system incl. Ford SYNC 3 - Adaptive LED headlights with glare-free high beam - Adaptive cruise control with traffic jam assist and stop & go function - Pre-Collision Assist (distance display and distance warning, collision warning system and active emergency braking assist) - Front camera with "Split View" technology incl. reversing camera - Blind Spot Assist incl. Cross Traffic Alert - Electric, sensor-controlled tailgate and Ford Key Free System - Park Assist with automatic parking function)

Brief expert findings

Documents submitted	At the time of the inspection, the vehicle registration certificate Part 2 (title) was available, but the vehicle registration certificate Part 1 (document) was not. (Copy)
VIN comparison	The vehicle identification number (VIN) was read from the vehicle and its conformity with the submitted documents was confirmed by the undersigned during the inspection.
Inspection	The inspection conditions were sufficient for the assessment of the vehicle. Lifting equipment and/or a pit were available for examining the vehicle.
Test drive	No test drive/shunting maneuver was carried out during the inspection of the vehicle.
Engine function test	An engine test run was performed.
readiness to drive	The vehicle was roadworthy at the time of inspection.

Value reducing factors

No.	Component group	Description
1	Trim / covers	Boot lid - interior trim (Abdeckkappe fehlt) - Incomplete - Replace
2	Tail light	License plate lamp - right side - Non-operational - Replace
3	Indicator - front	Mirror - left side (Materialabtrag) - Scratched - Replace
4	Side panel - rear left side	Sill - Scratch(es) - Smart repair
5	Door - front right side	Brightware - lower - Scratch(es) - Smart repair
6	Boot lid / rear door	Boot lid - Scratch(es) - Smart repair
7	Door - rear right side	Brightware - lower - Scratch(es) - Smart repair
8	2nd wheel set	1 tyre (Flanke) - Damaged - Replace
9	Wing mirror - right side	Mirror housing (+ Blinker) - Scratched - Replace
10	Rear bumper	Spoiler (Kratzer) - Deformed - Replace
11	Misc.	Inspection / maintenance - Due - Perform
12	2nd wheel set	2 alloy rims - Scratch(es) - Loss in value
13	Front bumper	Spoiler - Scratched - Paint
14	2nd wheel set	1 alloy rim (Materialabtrag) - Scratched - Replace
15	Door - front right side	Door - Corrosion - Repair and paint
16	Bonnet	Bonnet (Sandstrahleffekt) - Stone chips - Paint
17	Rear bumper	Rear bumper (Kratzer) - Deformed - Repair and paint



Wear and tear

No.	Component group	Description
1	Misc.	Main inspection - No evidence - No deduction

The vehicle shows signs of wear and tear commensurate with its age and use.

Order/Scope of Order

An order was placed to prepare a sales report for the described vehicle. This report includes the following:

- Description of key vehicle information
- Documentation of equipment features
(Delivery by third-party service providers)
- Documentation of damage, defects, missing parts
- Documentation of prior damage, unrepaired prior damage, repainting
- A brief visual or functional inspection of the equipment details, if possible.
(Functional testing of driver assistance systems is not included in the scope of services!)
- a photographic documentation of the vehicle

Basis for the order

This product is based on the guidelines for vehicle returns and valuations published by Alphabet Fleet GmbH. The expert makes the specific findings in each individual case objectively, within the framework of the prescribed standards, based on their own expertise.

The vehicle inspection takes place in a fully assembled, unassembled state.

Damage or defects that can only be detected during disassembly/diagnostic work or through further investigation remain within the realm of prognostic risk. An increased risk exists due to concealed defects caused by fraudulent misrepresentation and which were not identifiable by the expert.

Damage or defects resulting from normal use or wear and tear of the vehicle will be accepted in accordance with the applicable standard.

There was no explicit identification or monetary consideration of the expected features within the product.

Features which, in their nature and extent, slightly exceed normal use but do not constitute unacceptable damage, will be documented and indicated as signs of wear, if applicable.

Damage or defects that, according to the applicable standard, can no longer be attributed to normal use or wear and tear are listed under "Value Reducing Factors" in the product description.

Depending on the product specification, a monetary ID can be provided. If this takes place, the costs can be 100% d or pro rata depending on the vehicle's age and mileage.

Comments

- Für den montierten Radsatz wurde kein Nachweis erbracht.
- Winterradsatz ist kein Bestandteil des Auslieferungsumfangs.



Figure 1: Diagonal front (left)



Figure 2: Diagonal front (right)



Figure 3: Diagonal rear (left)



Figure 4: Diagonal rear (right)

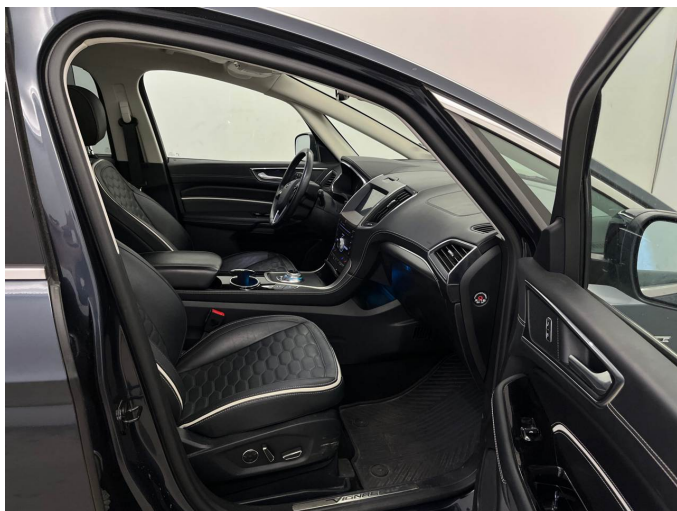


Figure 5: Interior - front



Figure 6: Interior - rear



Figure 7: Instrument cluster



Figure 8: Instrument panel



Figure 9: Interior 360° view



Figure 10: Cargo area



Figure 11: VIN



Figure 12: Mounted tyres



Figure 13: Documents

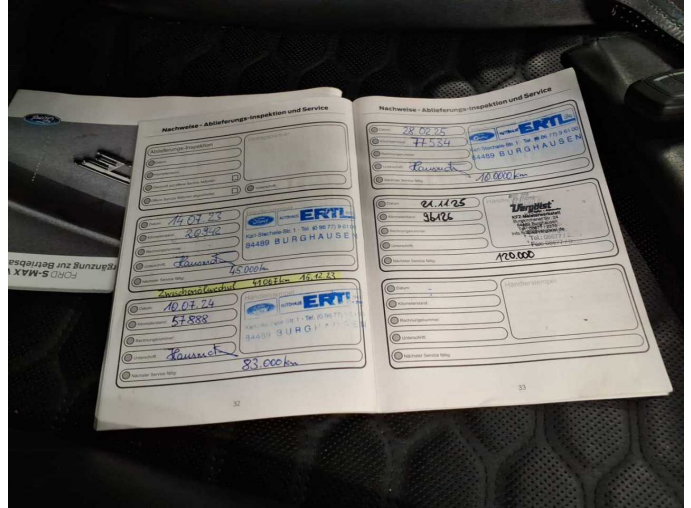


Figure 14: Documents

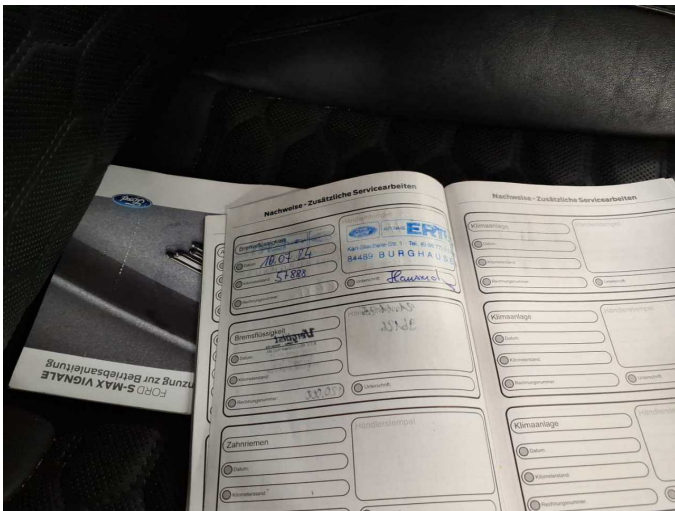


Figure 15: Documents

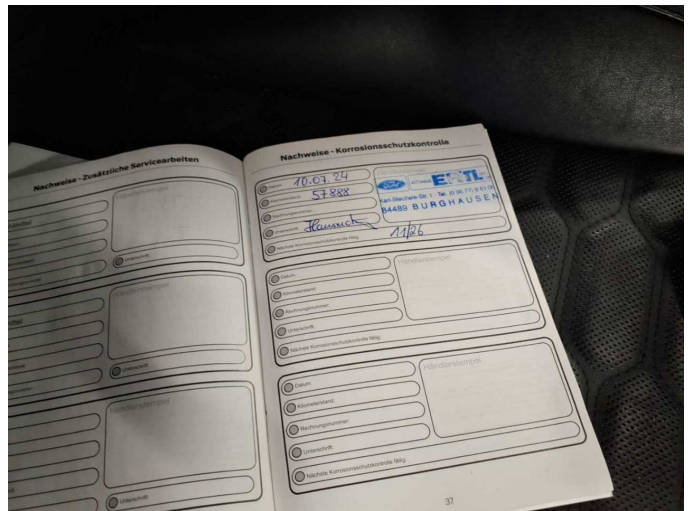


Figure 16: Documents



Figure 17: Additional tyres



Figure 18: Navigation



Figure 19: Misc.



Figure 20: Misc.



Figure 21: Misc.



Figure 22: Misc.



Figure 23: Misc.

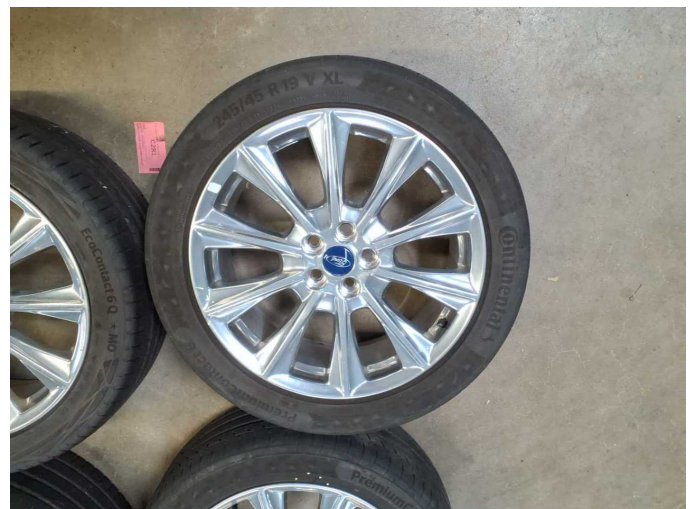


Figure 24: Misc.



Figure 25: Misc.



Figure 26: Misc.



Figure 27: Misc.



Figure 28: Misc.

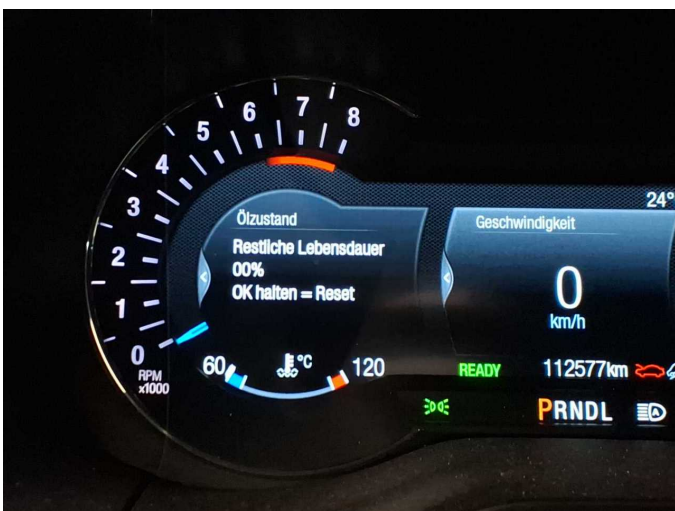


Figure 29: Misc.



Figure 30: Misc.



Figure 31: Misc.



Figure 32: Misc.



Figure 33: Misc.



Damage 1: Trim / covers: Boot lid - interior trim (Abdeckkappe fehlt) - Incomplete - Replace



Damage 1: Trim / covers: Boot lid - interior trim (Abdeckkappe fehlt) - Incomplete - Replace



Damage 2: Tail light: License plate lamp - right side - Non-operational - Replace



Damage 2: Tail light: License plate lamp - right side - Non-operational - Replace



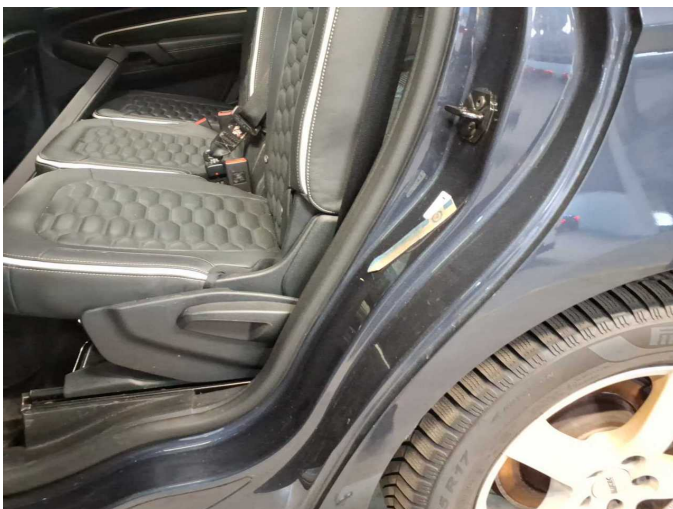
Damage 3: Indicator - front: Mirror - left side (Materialabtrag) - Scratched - Replace



Damage 3: Indicator - front: Mirror - left side (Materialabtrag) - Scratched - Replace



Damage 3: Indicator - front: Mirror - left side (Materialabtrag) - Scratched - Replace



Damage 4: Side panel - rear left side: Sill - Scratch(es) - Smart repair



Damage 4: Side panel - rear left side: Sill - Scratch(es) - Smart repair



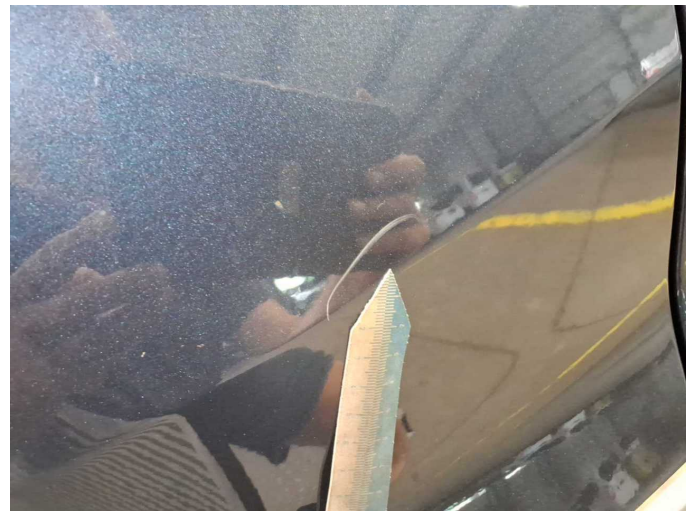
Damage 5: Door - front right side: Brightware - lower - Scratch(es) - Smart repair



Damage 5: Door - front right side: Brightware - lower - Scratch(es) - Smart repair



Damage 6: Boot lid / rear door: Boot lid - Scratch(es) - Smart repair



Damage 6: Boot lid / rear door: Boot lid - Scratch(es) - Smart repair



Damage 7: Door - rear right side: Brightware - lower - Scratch(es) - Smart repair



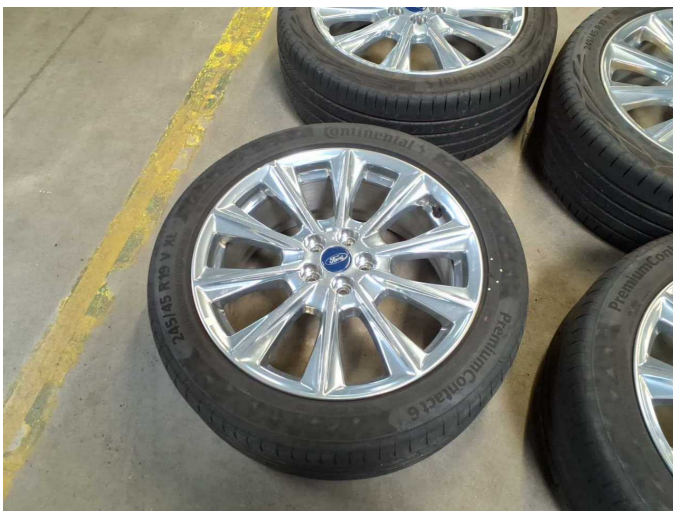
Damage 7: Door - rear right side: Brightware - lower - Scratch(es) - Smart repair



Damage 7: Door - rear right side: Brightware - lower - Scratch(es) - Smart repair



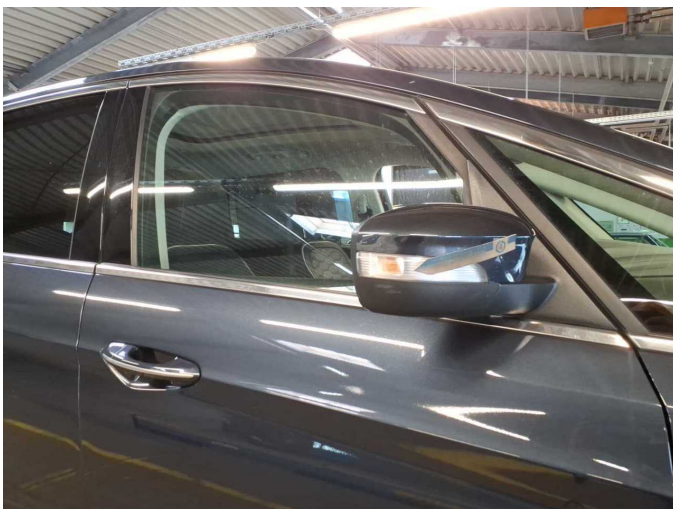
Damage 7: Door - rear right side: Brightware - lower - Scratch(es) - Smart repair



Damage 8: 2nd wheel set: 1 tyre (Flanke) - Damaged - Replace



Damage 8: 2nd wheel set: 1 tyre (Flanke) - Damaged - Replace



Damage 9: Wing mirror - right side: Mirror housing (+ Blinker) - Scratched - Replace



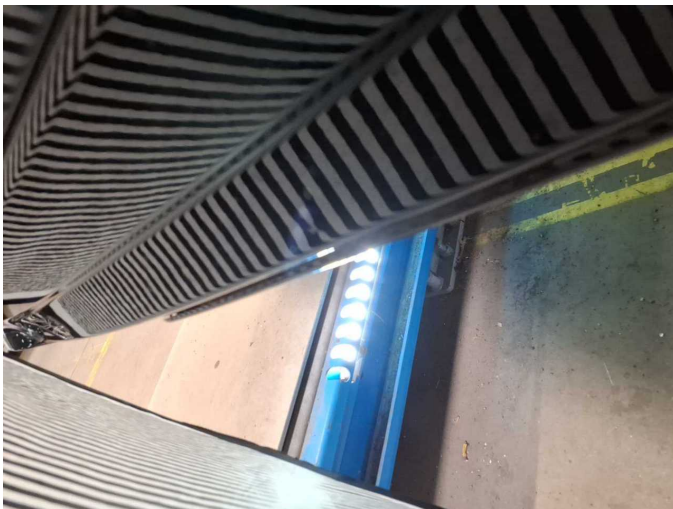
Damage 9: Wing mirror - right side: Mirror housing (+ Blinker) - Scratched - Replace



Damage 9: Wing mirror - right side: Mirror housing (+ Blinker) - Scratched - Replace



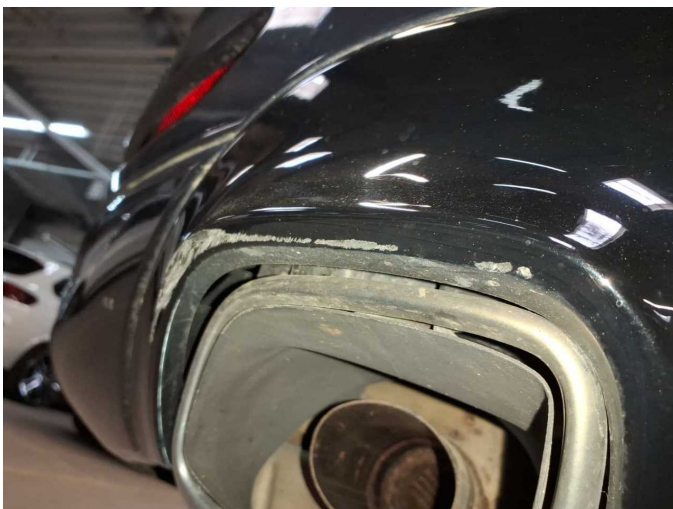
Damage 10: Rear bumper: Spoiler (Kratzer) - Deformed - Replace



Damage 10: Rear bumper: Spoiler (Kratzer) - Deformed - Replace



Damage 10: Rear bumper: Spoiler (Kratzer) - Deformed - Replace



Damage 10: Rear bumper: Spoiler (Kratzer) - Deformed - Replace



Damage 11: Misc.: Inspection / maintenance - Due - Perform



Damage 12: 2nd wheel set: 2 alloy rims - Scratch(es) - Loss in value



Damage 12: 2nd wheel set: 2 alloy rims - Scratch(es) - Loss in value



Damage 12: 2nd wheel set: 2 alloy rims - Scratch(es) - Loss in value



Damage 12: 2nd wheel set: 2 alloy rims - Scratch(es) - Loss in value



Damage 13: Front bumper: Spoiler - Scratched - Paint



Damage 13: Front bumper: Spoiler - Scratched - Paint



Damage 13: Front bumper: Spoiler - Scratched - Paint



Damage 13: Front bumper: Spoiler - Scratched - Paint



Damage 13: Front bumper: Spoiler - Scratched - Paint



Damage 13: Front bumper: Spoiler - Scratched - Paint



Damage 13: Front bumper: Spoiler - Scratched - Paint



Damage 13: Front bumper: Spoiler - Scratched - Paint



Damage 13: Front bumper: Spoiler - Scratched - Paint



Damage 14: 2nd wheel set: 1 alloy rim (Materialabtrag) - Scratched - Replace



Damage 14: 2nd wheel set: 1 alloy rim (Materialabtrag) - Scratched - Replace



Damage 14: 2nd wheel set: 1 alloy rim (Materialabtrag) - Scratched - Replace



Damage 14: 2nd wheel set: 1 alloy rim (Materialabtrag) - Scratched - Replace



Damage 15: Door - front right side: Door - Corrosion - Repair and paint



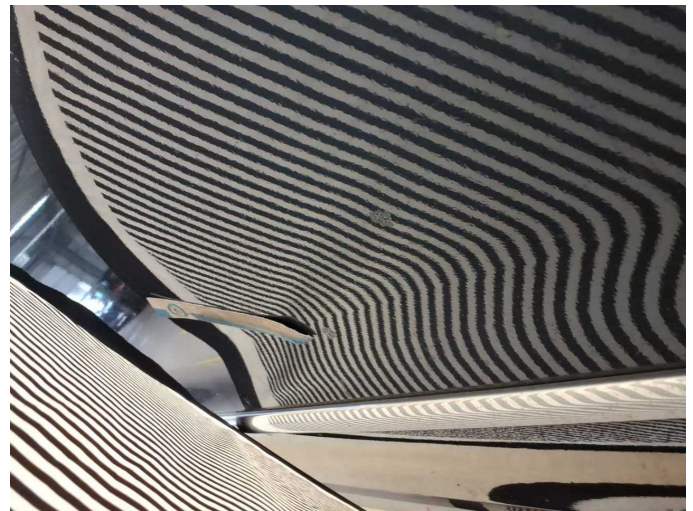
Damage 15: Door - front right side: Door - Corrosion - Repair and paint



Damage 15: Door - front right side: Door - Corrosion - Repair and paint



Damage 15: Door - front right side: Door - Corrosion - Repair and paint



Damage 15: Door - front right side: Door - Corrosion - Repair and paint



Damage 15: Door - front right side: Door - Corrosion - Repair and paint



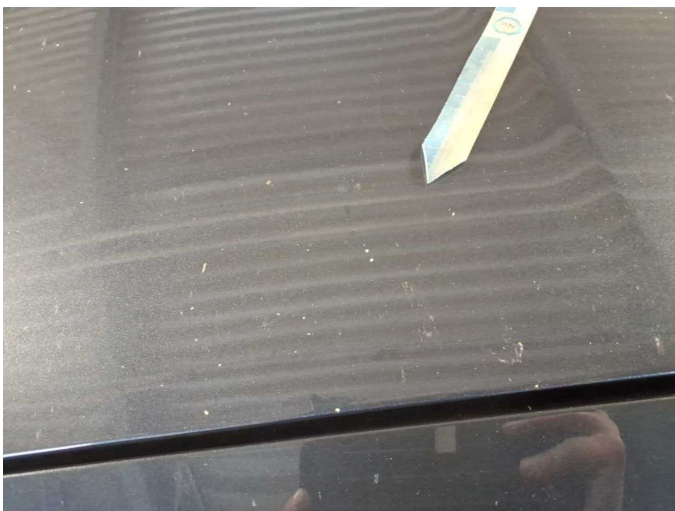
Damage 15: Door - front right side: Door - Corrosion - Repair and paint



Damage 15: Door - front right side: Door - Corrosion - Repair and paint



Damage 16: Bonnet: Bonnet (Sandstrahleffekt) - Stone chips - Paint



Damage 16: Bonnet: Bonnet (Sandstrahleffekt) - Stone chips - Paint



Damage 16: Bonnet: Bonnet (Sandstrahleffekt) - Stone chips - Paint



Damage 16: Bonnet: Bonnet (Sandstrahleffekt) - Stone chips - Paint



Damage 17: Rear bumper: Rear bumper (Kratzer) - Deformed - Repair and paint



Damage 17: Rear bumper: Rear bumper (Kratzer) - Deformed - Repair and paint



Damage 17: Rear bumper: Rear bumper (Kratzer) - Deformed - Repair and paint



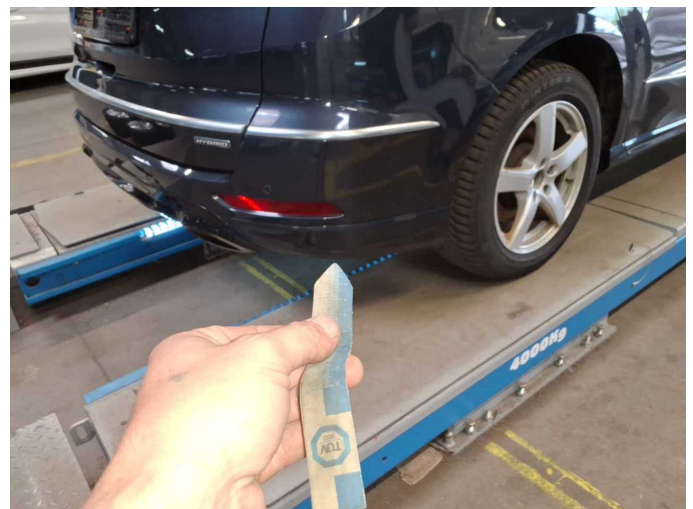
Damage 17: Rear bumper: Rear bumper (Kratzer) - Deformed - Repair and paint



Damage 17: Rear bumper: Rear bumper (Kratzer) - Deformed - Repair and paint



Damage 17: Rear bumper: Rear bumper (Kratzer) - Deformed - Repair and paint



Damage 17: Rear bumper: Rear bumper (Kratzer) - Deformed - Repair and paint



Damage 17: Rear bumper: Rear bumper (Kratzer) - Deformed - Repair and paint