

2-DRE-504

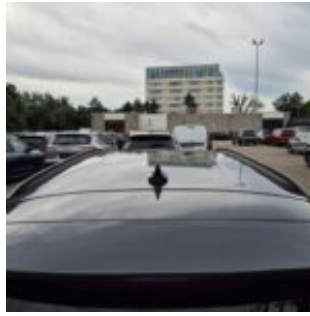
2-DRE-504 · ST-line 125pk 92kw mHEV M6 Clipper · 30 June 2026 · Zaventem (BE)

Specifications

License Plate Number	2-DRE-504	Fuel Type	Hybrid Gasoline
Manufacturer	FORD	VIN	WF0PXXGCHPPL84625
Model	Focus	Cylinder Capacity	999 ^{cm³}
Model Versions	ST-line 125pk 92kw mHEV M6 Clipper	Transmission Type	Handmatig geschakelde transmissie
Body Type	5 door hatchback	First Admission	02-06-2023
Color	Grey	Odometer	83.589 ^{Km}
Paint Type	Metallic	Numer Of Keys	2
Production Year	2023	Interior	Black
KW	92	Number Headrests	5

Images





Accessories

ABS

Airbags

Alloy wheels

Audio System

Automatic air conditioning

Bluetooth car kit

Central door locking

Centre armrest

Cruise control

Electric rear windows

Electric windows front

Electrically adjustable exterior mirrors

Front & rear parking sensors

Leather steering wheel

Navigation system

Roller cover / parcel shelf

Seat heating

Steering wheel multifunction

Steeringwheel - Heated

Windscreen - Heated

Condition

Condition exterior Adequate

Condition interior Adequate

Last Maintenance Unknown

Previous Repairs

Unknown

Tire Specifications

Tire	Profile	Brand	Width	Aspect Ratio	Radial	Type
Front Left	1 ^{mm}	Goodyear	215 ^{mm}	50 ^{mm}	17 ^{inch}	All Season
Rear Left	4 ^{mm}	Goodyear	215 ^{mm}	50 ^{mm}	17 ^{inch}	All Season
Front Right	1 ^{mm}	Goodyear	215 ^{mm}	50 ^{mm}	17 ^{inch}	All Season
Rear Right	4 ^{mm}	Goodyear	215 ^{mm}	50 ^{mm}	17 ^{inch}	All Season
Spare Tire Type	Compressor					

Damages



Damage Part
Fender - Rear Left

Damage Type
Dent(s)

Repair Type
Panelbeating & Spray

Acceptable
No



Damage Part
Hood

Damage Type
Stonechipping

Repair Type
Acceptable

Acceptable
Yes

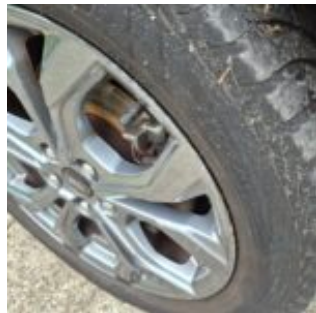


Damage Part
spoiler FB

Damage Type
Scratch(es)

Repair Type
Spray

Acceptable
No



Damage Part
Alloy - Right Front

Damage Type
Damaged

Repair Type
Rim repair

Acceptable
No



Damage Part
Frontdoor - Right

Damage Type
Small scratch(es)

Repair Type
Spray

Acceptable
No



Damage Part
Reardoor - Right

Damage Type
Small scratch(es)

Repair Type
Polish

Acceptable
No



Damage Part	Damage Type	Repair Type	Acceptable
Alloy - Right Rear	Damaged	Rim repair	No



Damage Part	Damage Type	Repair Type	Acceptable
Fender - Rear Right	Scratch(es)	Spray	No



Damage Part	Damage Type	Repair Type	Acceptable
Bumper - Rear	Dent(s) & Scratch(es)	Panelbeating & Spray	No



Damage Part	Damage Type	Repair Type	Acceptable
Tailgate	Scratch(es)	Spray	No





Damage Part
Interior

Damage Type
Stains & dirt

Repair Type
Cleaning

Acceptable
No



Damage Part
Roof

Damage Type
Scratch(es)

Repair Type
Spray

Acceptable
No