

Expertise

Protocol number: 46171143
Order No. / Reference: 26530177
Inspection date: 24 Jun 2026

Manufacturer: Volkswagen

Model: T7 Multivan 2,0 TDI SCR Kurz Life

VIN: WV2ZZZST3RH019831



Vehicle details

Manufacturer / Type / Model / Equipment

Volkswagen T7 Multivan 2,0 TDI SCR Kurz Life

Vehicle Identification number WV2ZZZST3RH019831

Mileage (Read) 94,146 km

First registration 14 May 2024

Number of holders 1

Next periodical technical inspection 05/2027

(Report not on hand)

Power / Engine displacement 110 kw / 1,968 ccm

Fuel type / Cylinder Diesel / 4

Gearbox / Number of gears Automatic / 7

Type of drive Front drive

Type of vehicle Van

Colour / colour code Deep Black Perleffekt (C9X)

Doors / Seats 5 / 7

Upholstery type Cloth

Colour of upholstery Dark grey-Light grey

Re-import no

readiness to drive Not roadworthy / moveable



Vehicle details			
Maintenance booklet / proof	digital proof / complete	Next maintenance in	25,600 km
Last service on / at	05/2026 at 89,669 km		
Key is / should be	2 / 2	FZG documents	ZB#2 (B) was available (copy), ZB#1 (S) was not available.
		Letter No.	HB070622
Previous damage / Accident	Detectable	Repainting	Detectable
Inspection conditions	sufficient	Lifting equipment / pit	yes
Test drive	Not performed	Engine function test	Performed
readiness to drive	Not roadworthy / moveable		
Manufacturer key number/ type code number	0603 / CQJ 00444		
Emission standard	EURO6;WLTP;AP;PI/CI; M, N1 I	fine dust sticker	
Permitted total weight	2,850 kg	Empty weight	

Tyres

Mounted tyres				
#	Tyre size	Type of tyre	Manufacturer	Tread depth
1)	215/65 R16 102H	Summer tyres on Light alloy	Continental	4mm / 4mm
2)	215/65 R16 102H	Summer tyres on Light alloy	Continental	1mm / 1mm
Additional tyres				
#	Tyre size	Type of tyre	Manufacturer	Tread depth
1)	215/65 R15 102H	Winter tyres on Light alloy	Pirelli	2mm / 2mm
2)	215/65 R15 102H	Winter tyres on Light alloy	Pirelli	4mm / 4mm
Replacement				
Typ	Tyre size	Type of tyre	Manufacturer	Tread depth
	Tirefit	Expiration date 01/2028		

Legend: Tread depth information for the left tire is listed first, for the right tire it is listed second on the axle in the direction of travel.

TÜV SÜD Auto Partner GmbH
Wiesenring 2
04159 Leipzig

Inspection location
Hartmann Fleet Professionals GmbH
Leerenstraße 25
29683 Bad Fallingbommel



Equipment



Standard equipment

- Airbag for driver and front passenger (with passenger airbag deactivation)
- Evasive steering assist and turn assist
- Exterior mirror housings in high-gloss black
- Floor coverings: Reinforced velour carpet in the passenger compartment
- third brake light
- Three-phase generator 180 A
- Electronic Stability Program, ABS, ASR (with deactivation button), EDS (Hill Start Assist)
- Chassis: Suspension and damping, standard
- Window in the sliding door, right
- Electric windows, front
- Floor mats: Textile floor mats in the driver's cab
- Transmission: DSG (dual-clutch transmission), 7-speed automatic
- Tailgate: Power closing tailgate
- Instrument cluster (km/h) (displays for speed, total/trip distance, engine speed, fuel level and time)
- Fuel-powered auxiliary heater
- Cargo space divider (load capacity 20 kg) with bag hooks and luggage net
- Strip between the headlights painted in glossy black (with two chrome strips)
- Headlight range control
- Fatigue detection
- Emergency braking assistant "Front Assist" (with pedestrian and cyclist detection)
- Particulate filter: Soot particle filter for diesel engines
- Radio: App-Connect incl. App-Connect Wireless (for Apple CarPlay and Android Auto)
- Radio accessories: 8 speakers (passive)
- Radio accessories: USB interface (2 USB-C ports at the front - 4 USB-C charging ports in the passenger compartment)
- Wheels/Tires: "Syrakus" alloy wheels 6.5 J x 16, in silver
- Wheels/Tire Accessories: Lockable wheel bolts
- Sliding door: Closing aid on both sides for sliding doors (sliding door left and right with closing aid)
- Drawers under the outer seats in the passenger compartment and 2 waste bins
- Automatically dimming interior safety mirror
- Seat covers: Bi-color seat covers in fabric, design "Ribella"
- Seats in the passenger compartment: 3 individual seats in the 3rd row (2 preparations for armrests on the inside of the 3rd row)
- Seats: Armrests for driver and front passenger seats, on both sides (with electric lumbar support and folding table)
- Sun visors with illuminated mirrors, ticket holder on the driver's side (with airbag label on sun visor and B-pillar)
- Telephone: Mobile phone interface
- First aid kit, warning triangle and high-visibility vest
- Electronic immobilizer
- Airbag: Side and head airbags for driver and front passenger (head airbags for the outer rear seats - center airbag in the front)
- Reinforced battery (68 Ah/ 380 A)
- On-board tools and tire mobility set (in the storage compartments in the luggage compartment)
- Decorative inlays: Decorative inlays "Dark Silver Brushed"
- Parking assistance in the front and rear areas
- Chassis: 16" chassis with 16" disc brakes at the front and 16" disc brakes at the rear
- Window in the sliding door, left
- Windows: Front pane made of laminated safety glass, heat and sound insulating
- Cruise control system with speed limiter (and "Intelligent Speed Assist")
- Glove compartment with light
- Rear window with wiper/washer system, heated
- Air conditioning with manual control in the driver's cab, with additional heating for the cargo/passenger compartment
- LED headlights with LED daytime running lights
- LED taillights
- Steering wheel: Multifunction leather steering wheel with paddle shifters
- Multifunction display: Digital Cockpit
- Non-smoking version
- eCall emergency call system
- Without Mode 3 charging cable
- Radio: "Ready 2 Discover" with 25.4 cm (10 inch) color touchscreen including "Streaming & Internet"
- Radio: Digital radio reception (DAB+)
- Radio accessories: Voice control
- Wheels, tires: Covers for alloy wheels
- Wheels/Tires: 215/65 R 16 102 H XL, optimized for low rolling resistance
- Wheels/Tires: Tire pressure monitoring system
- Windscreen wiper intermittent control with rain sensor for the front windscreen wipers
- Keys for locking system: 2 vehicle keys
- Speed-sensitive power steering (Servotronic)
- Seat belt monitoring system (warning tone and light for unfastened seat belts front and rear)
- Seats in the passenger compartment: 2 individual seats facing forward in the 2nd row.
- Seats: Armrest(s) inside the seats (removable and repositionable) (in the 2nd row of seats)
- Seats: Left and right seats in the 1st row (with height adjustment - including 2-way headrest)
- Lane keeping assistant "Lane Assist"
- Daytime running light function with auxiliary driving lights ("Coming home"/"Leaving home" function)
- Traffic sign recognition



- Central locking with keyless start system "Keyless Start" without safe locking

- Green thermal insulation glazing

Extra equipment

- Anti-theft alarm system with interior monitoring, backup horn and tow-away protection
- Windows: Front pane made of laminated safety glass, heat and sound insulating, heated
- Paint finish: Pearl effect
- Heated seats for the driver's cab, left and right, separately adjustable
- Central locking with keyless locking and starting system "Keyless Access/Advanced" (without safe locking)

- Windows (glass type in the cargo/passenger compartment) - rear windows tinted
- Air conditioning: 3-zone "Air Care Climatronic" with additional control unit in the passenger compartment
- Navigation system "Discover Media" (25.4 cm (10 inch) color touchscreen - streaming & internet)
- Partitions: Mesh partition

Brief expert findings

Documents submitted	At the time of the inspection, the vehicle registration certificate Part 2 (title) was available, but the vehicle registration certificate Part 1 (document) was not. (Copy)
VIN comparison	The vehicle identification number (VIN) was read from the vehicle and its conformity with the submitted documents was confirmed by the undersigned during the inspection.
Inspection	The inspection conditions were sufficient for the assessment of the vehicle. Lifting equipment and/or a pit were available for examining the vehicle.
Test drive	No test drive/shunting maneuver was carried out during the inspection of the vehicle.
Engine function test	An engine test run was performed.
readiness to drive	The vehicle was not capable of driving under its own power at the time of inspection, but can be moved on its own axle with the aid of assistance.

Value reducing factors

No.	Component group	Description
1	Wing mirror - left side	Mirror glass - Differs from the original configuration - Remove
2	Wing mirror - right side	Mirror glass - Differs from the original configuration - Remove
3	Vehicle glazing	Rear window - Glued / labelled - De-glue / neutralise
4	Trim / covers	Carpet - front left side - Scratch(es) - Smart repair
5	Door - rear right side	Door - Scratch(es) - Smart repair
6	Wheel / tyres	Tyre - right - Worn - Replace
7	Boot lid / rear door	Rear spoiler - Scratch(es) - Paint
8	Roof	Roof rail - right side - Scratch(es) - Paint
9	Side panel - rear right side	Side panel - Scratch(es) - Paint
10	Bonnet	Bonnet - Stone chips - Paint
11	Rear bumper	Rear bumper - Scratch(es) - Paint
12	Side panel - rear left side	Side panel (Spachtel eingefallen) - Unprofessionally repaired - Repair and paint
13	Front bumper	Front bumper - Dent / paintcoat damage - Repair and paint
14	Vehicle glazing	Windscreen - Broken / torn - Replace



Wear and tear

No.	Component group	Description
1	Seat - rear	Seat cover - 3rd row - Scratch(es) - No deduction
2	Trim / covers	Boot lining - Scratch(es) - No deduction
3	2nd wheel set	2 tyres (Über 4mm) - No deduction
4	Boot lid / rear door	Boot lid - Scratch(es) - No deduction
5	2nd wheel set	2 tyres - Worn - No deduction

The vehicle shows signs of wear and tear commensurate with its age and use.

Previous damages

No.	Previous damage	Extent of damage (Net)
1	Side - left, Provided by user / customer, from 25 Apr 2025	4.175,22 €

Repainting

No.	Repainting
1	Roof, Professionally carried out, Invoice of repair done Non-existent
2	Roof rail - left side, Professionally carried out, Invoice of repair done Non-existent
3	Roof rail - right side, Professionally carried out, Invoice of repair done Non-existent
4	Door - rear left side, Professionally carried out, Invoice of repair done Non-existent
5	Side panel - rear left side, Unprofessionally carried out, Invoice of repair done Non-existent

Paint coat thickness measurement

Roof	236 µm	Roof rail - left side	194 µm
Roof rail - right side	221 µm	Side panel - rear left side	771 µm
Door - rear left side	268 µm		

Order/Scope of Order

An order was placed to prepare a sales report for the described vehicle. This report includes the following:

- Description of key vehicle information
- Documentation of equipment features
(*Delivery by third-party service providers*)
- Documentation of damage, defects, missing parts
- Documentation of prior damage, unrepaired prior damage, repainting
- A brief visual or functional inspection of the equipment details, if possible.
(*Functional testing of driver assistance systems is not included in the scope of services!*)
- a photographic documentation of the vehicle



Basis for the order

This product is based on the guidelines for vehicle returns and valuations published by Alphabet Fleet GmbH. The expert makes the specific findings in each individual case objectively, within the framework of the prescribed standards, based on their own expertise.

The vehicle inspection takes place in a fully assembled, unassembled state.

Damage or defects that can only be detected during disassembly/diagnostic work or through further investigation remain within the realm of prognostic risk. An increased risk exists due to concealed defects caused by fraudulent misrepresentation and which were not identifiable by the expert.

Damage or defects resulting from normal use or wear and tear of the vehicle will be accepted in accordance with the applicable standard.

There was no explicit identification or monetary consideration of the expected features within the product.

Features which, in their nature and extent, slightly exceed normal use but do not constitute unacceptable damage, will be documented and indicated as signs of wear, if applicable.

Damage or defects that, according to the applicable standard, can no longer be attributed to normal use or wear and tear are listed under "Value Reducing Factors" in the product description.

Depending on the product specification, a monetary ID can be provided. If this takes place, the costs can be 100% d or pro rata depending on the vehicle's age and mileage.

Previous damages

According to available information previous damages were repaired at the vehicle. Traces of repairs, which allow conclusions about the area of repair, were not recognizable during the inspection.

Comments

- Winterradsatz ist kein Bestandteil des Auslieferungsumfangs.



Figure 1: Diagonal front (left)



Figure 2: Diagonal front (right)



Figure 3: Diagonal rear (left)



Figure 4: Diagonal rear (right)



Figure 5: Interior - front



Figure 6: Interior - rear



Figure 7: Instrument cluster



Figure 8: Instrument panel



Figure 9: Interior 360° view



Figure 10: Cargo area



Figure 11: VIN



Figure 12: Mounted tyres



Figure 13: Documents



Figure 14: Additional tyres



Figure 15: Additional tyres



Figure 16: Additional tyres



Figure 17: Navigation



Figure 18: Misc.



Figure 19: Misc.



Figure 20: Misc.



Figure 21: Misc.



Figure 22: Misc.



Figure 23: Misc.



Figure 24: Misc.



Figure 25: Misc.



Figure 26: Misc.

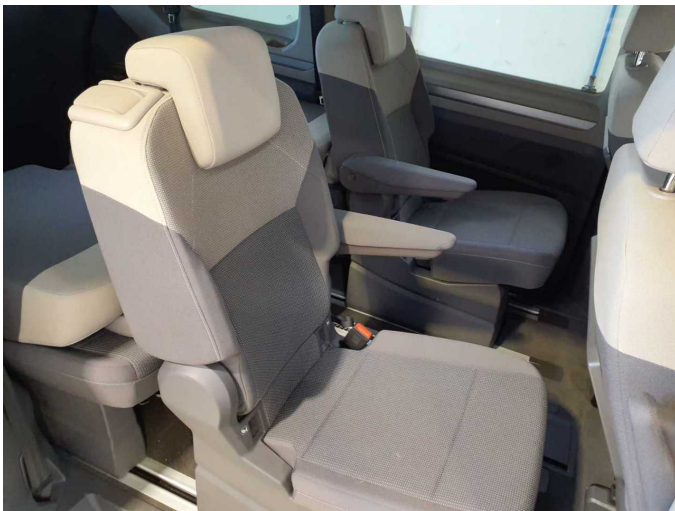


Figure 27: Misc.



Figure 28: Misc.

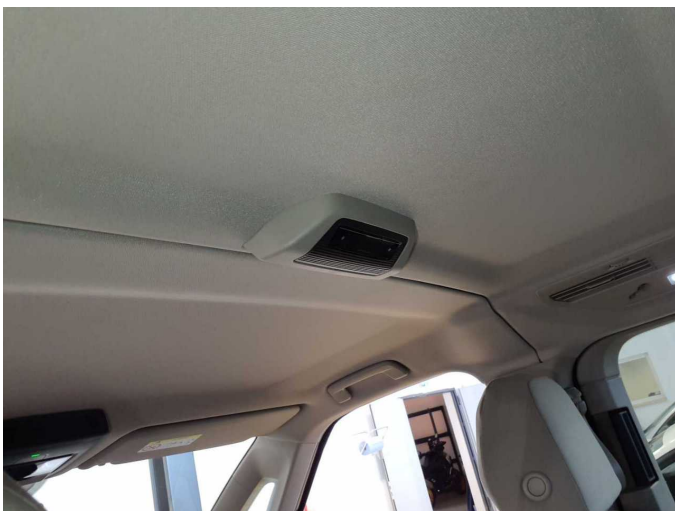


Figure 29: Misc.



Figure 30: Misc.



Figure 31: Misc.



Figure 32: Misc.



Figure 33: Misc.



Damage 1: Wing mirror - left side: Mirror glass - Differs from the original configuration - Remove



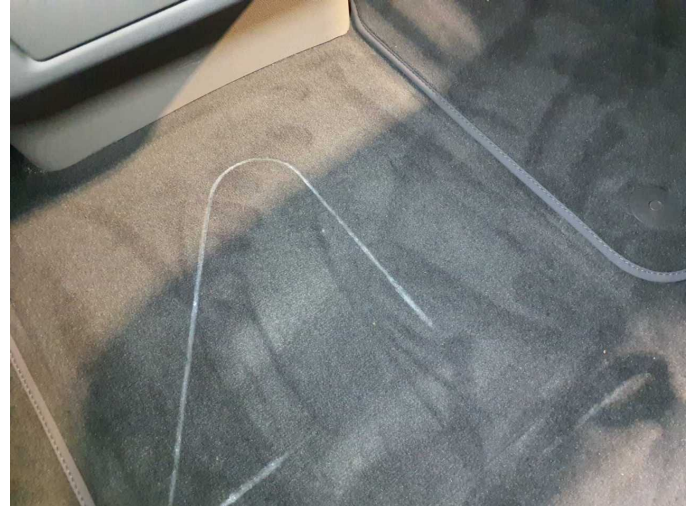
Damage 2: Wing mirror - right side: Mirror glass - Differs from the original configuration - Remove



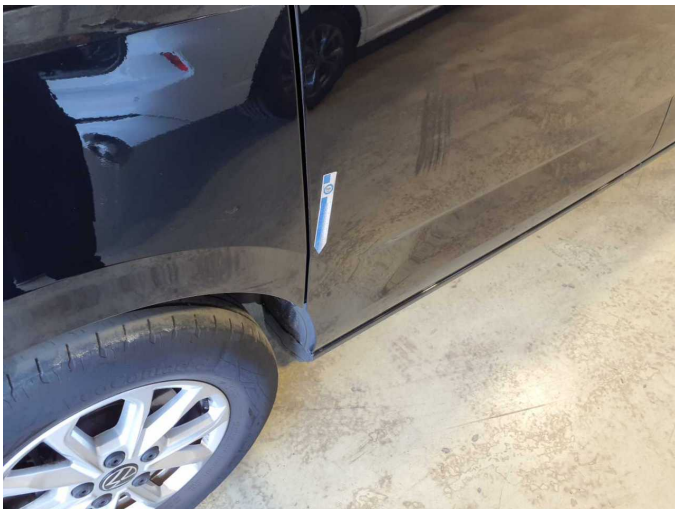
Damage 3: Vehicle glazing: Rear window - Glued / labelled - De-glue / neutralise



Damage 4: Trim / covers: Carpet - front left side - Scratch(es) - Smart repair



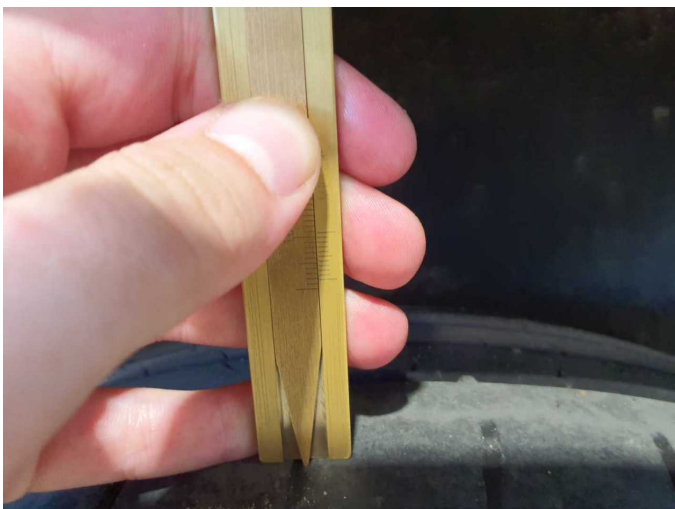
Damage 4: Trim / covers: Carpet - front left side - Scratch(es) - Smart repair



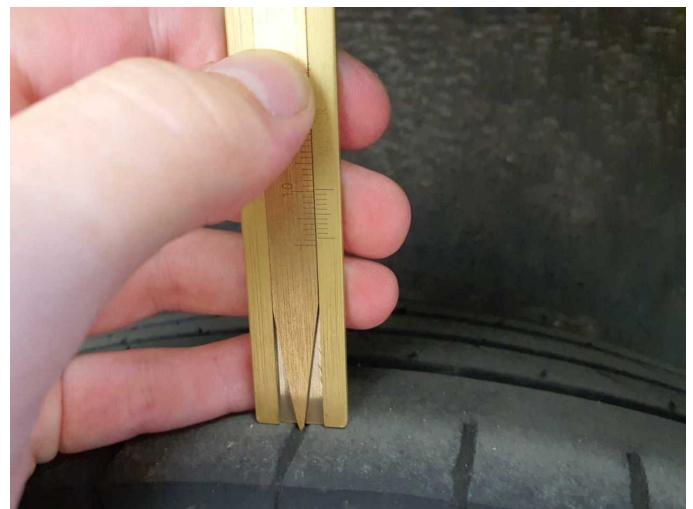
Damage 5: Door - rear right side: Door - Scratch(es) - Smart repair



Damage 5: Door - rear right side: Door - Scratch(es) - Smart repair



Damage 6: Wheel / tyres: Tyre - right - Worn - Replace



Damage 6: Wheel / tyres: Tyre - right - Worn - Replace



Damage 7: Boot lid / rear door: Rear spoiler - Scratch(es) - Paint



Damage 7: Boot lid / rear door: Rear spoiler - Scratch(es) - Paint



Damage 8: Roof: Roof rail - right side - Scratch(es) - Paint



Damage 8: Roof: Roof rail - right side - Scratch(es) - Paint



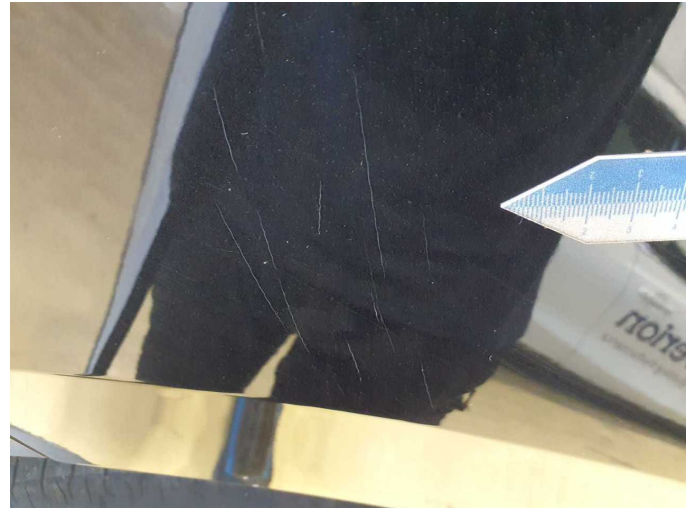
Damage 8: Roof: Roof rail - right side - Scratch(es) - Paint



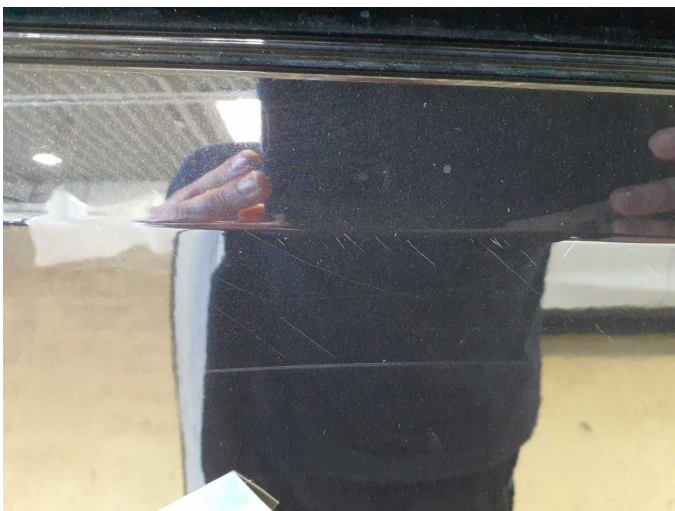
Damage 8: Roof: Roof rail - right side - Scratch(es) - Paint



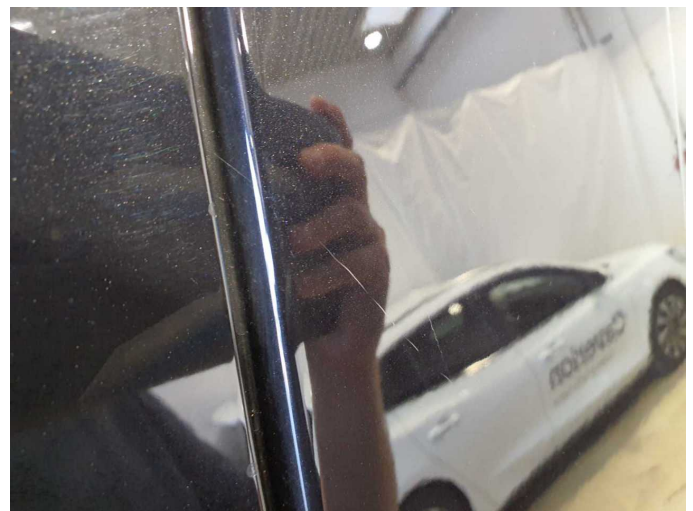
Damage 9: Side panel - rear right side: Side panel - Scratch(es) - Paint



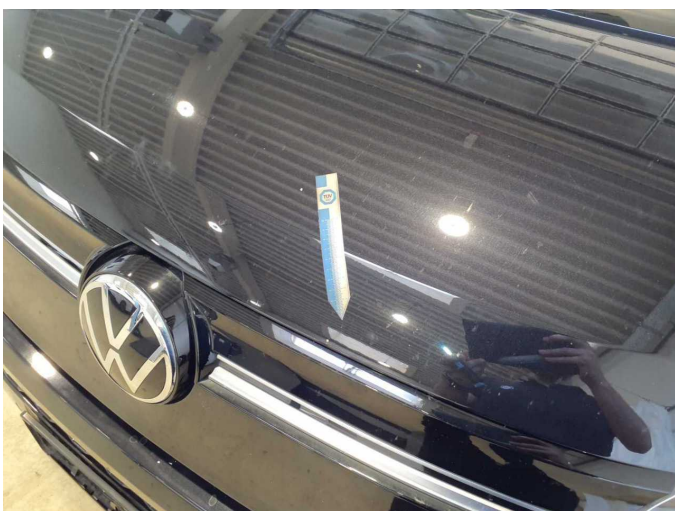
Damage 9: Side panel - rear right side: Side panel - Scratch(es) - Paint



Damage 9: Side panel - rear right side: Side panel - Scratch(es) - Paint



Damage 9: Side panel - rear right side: Side panel - Scratch(es) - Paint



Damage 10: Bonnet: Bonnet - Stone chips - Paint



Damage 10: Bonnet: Bonnet - Stone chips - Paint



Damage 10: Bonnet: Bonnet - Stone chips - Paint



Damage 11: Rear bumper: Rear bumper - Scratch(es) - Paint



Damage 11: Rear bumper: Rear bumper - Scratch(es) - Paint



Damage 11: Rear bumper: Rear bumper - Scratch(es) - Paint



Damage 11: Rear bumper: Rear bumper - Scratch(es) - Paint



Damage 11: Rear bumper: Rear bumper - Scratch(es) - Paint



Damage 12: Side panel - rear left side: Side panel (Spachtel eingefallen)
- Unprofessionally repaired - Repair and paint



Damage 12: Side panel - rear left side: Side panel (Spachtel eingefallen)
- Unprofessionally repaired - Repair and paint



Damage 12: Side panel - rear left side: Side panel (Spachtel eingefallen)
- Unprofessionally repaired - Repair and paint



Damage 13: Front bumper: Front bumper - Dent / paintcoat damage -
Repair and paint



Damage 13: Front bumper: Front bumper - Dent / paintcoat damage -
Repair and paint



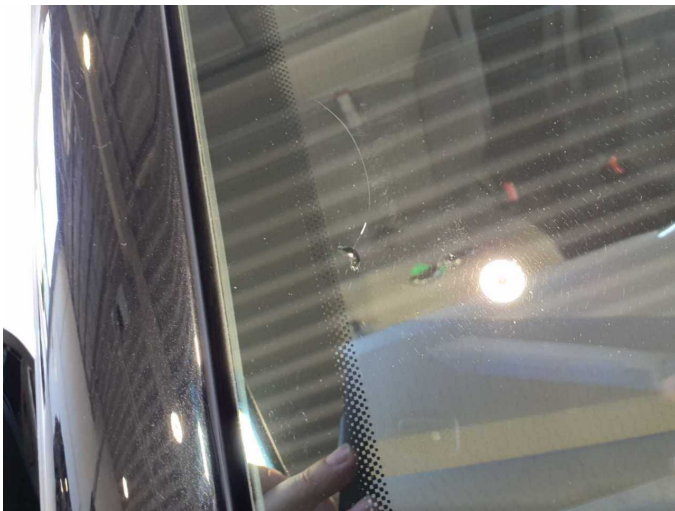
Damage 13: Front bumper: Front bumper - Dent / paintcoat damage -
Repair and paint



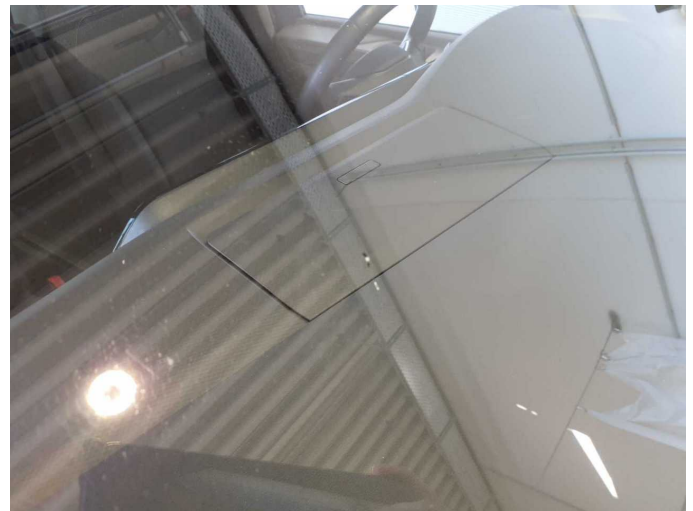
Damage 14: Vehicle glazing: Windscreen - Broken / torn - Replace



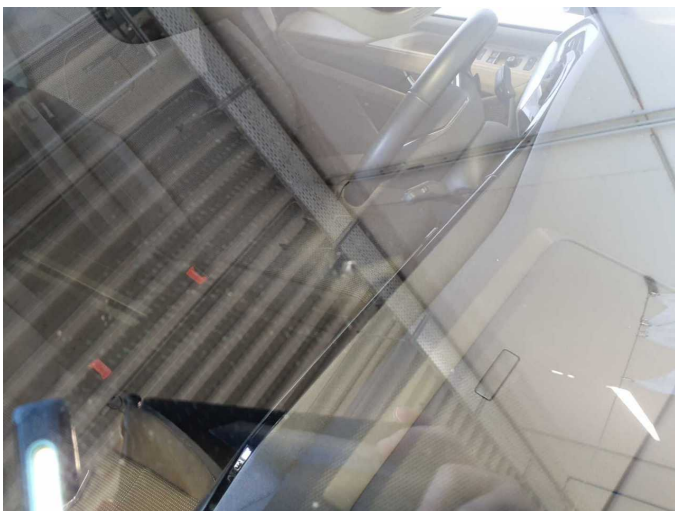
Damage 14: Vehicle glazing: Windscreen - Broken / torn - Replace



Damage 14: Vehicle glazing: Windscreen - Broken / torn - Replace



Damage 14: Vehicle glazing: Windscreen - Broken / torn - Replace



Damage 14: Vehicle glazing: Windscreen - Broken / torn - Replace



Repainting 1: Roof



Repainting 1: Roof



Repainting 2: Roof rail - left side



Repainting 2: Roof rail - left side



Repainting 3: Roof rail - right side



Repainting 3: Roof rail - right side



Repainting 4: Door - rear left side



Repainting 4: Door - rear left side



Repainting 5: Side panel - rear left side



Repainting 5: Side panel - rear left side