

## Expertise

Protocol number: 45522173  
Order No. / Reference: 26347361  
Inspection date: 13 May 2026

Manufacturer: Audi

Model: A4 Avant 35 TDI S tronic S line

VIN: WAUZZZF43RA058796



### Vehicle details

#### Manufacturer / Type / Model / Equipment

Audi A4 Avant 35 TDI S tronic S line

**Vehicle Identification number** WAUZZZF43RA058796

**Mileage (Read)** 115,461 km

**First registration** 21 Feb 2024

**Number of holders** 1

**Power / Engine displacement** 120 kw / 1,968 ccm

**Fuel type / Cylinder** Hybrid Diesel / E / 4

**Gearbox / Number of gears** Automatic / 7

**Type of drive** Front drive

**Type of vehicle** Station wagon

**Colour / colour code** Daytonagrau perleffect (Z7S)

**Doors / Seats** 5 / 5

**Upholstery type** Cloth

**Colour of upholstery** Black-Red



## Vehicle details

<b>Maintenance booklet / proof</b>	digital proof / complete	<b>Next maintenance in</b>	7,900 km
<b>Last service on / at</b>	12/2025 at 99,943 km		
<b>Key is / should be</b>	2 / 2	<b>FZG documents</b>	ZB#2 (B) was available (copy), ZB#1 (S) was not available.
		<b>Letter No.</b>	HA872283
<b>Previous damage / Accident</b>	None detectable	<b>Repainting</b>	None detectable
<b>Inspection conditions</b>	sufficient	<b>Lifting equipment / pit</b>	yes
<b>Test drive</b>	Not performed	<b>Engine function test</b>	Performed
<b>Manufacturer key number/ type code number</b>	0588 / BPK 01339		
<b>Emission standard</b>	EURO6;WLTP;EA;PI/CI;M, N1, N2	<b>fine dust sticker</b>	
<b>Permitted total weight</b>	2,165 kg	<b>Empty weight</b>	

## Tyres

### Mounted tyres

#	Tyre size	Type of tyre	Manufacturer	Tread depth
1)	225/50 R17 98H	Winter tyres on Light alloy	Dunlop	5mm / 5mm
2)	225/50 R17 98H	Winter tyres on Light alloy	Dunlop	5mm / 5mm

### Additional tyres

#	Tyre size	Type of tyre	Manufacturer	Tread depth
1)	245/40 R18 93Y	Summer tyres on Light alloy	Hankook	4mm / 4mm
2)	245/40 R18 93Y	Summer tyres on Light alloy	Hankook	5mm / 5mm

### Replacement

Typ	Tyre size	Type of tyre	Manufacturer	Tread depth
N	125/70 R19 100M	Summer tyres on Steel	Sonstige	2 mm

**Legend: Tread depth information for the left tire is listed first, for the right tire it is listed second on the axle in the direction of travel.**



## Equipment

### Standard equipment

- Airbag: Front airbags, passenger airbag can be deactivated
- Anti-lock braking system (ABS)
- Audi connect emergency call & service with Audi connect Remote & Control
- Vehicle tool kit
- Fabric headliner
- Black roof rails
- Diesel particulate filter (DPF)
- Parking assistance plus
- Electromechanical parking brake
- Electronic Differential Lock (EDS)
- Driver information system with color display
- electric window regulator
- Remote key, without SafeLock
- Cruise control system with speed limiter
- rear window wiper
- Interior lighting
- Camera-based traffic sign recognition
- ISOFIX child seat attachment and Top Tether for the outer rear seats
- Headrests (5)
- Manual cargo cover
- Steering column, manually adjustable in height and axis
- Mild hybrid
- Non-smoking version
- Radio: MMI Radio plus
- Tire repair kit
- Electromechanical power steering
- Seats: Standard front seats
- Seats: Front seats manually adjustable
- Start-stop system
- Glazing: Windscreen in heat-insulating and acoustic glazing
- Airbag: Front side airbags and head airbag system
- Accent areas matte black
- Traction control (ASR)
- Audi pre sense city
- Exterior mirror housings in body color
- third brake light, raised
- S line roof spoiler
- Decorative inlays diamond lacquer silver grey
- Tachometer
- Door sill trims with aluminum inlay at the front, illuminated, with S lettering
- Electronic Stability Control (ESC)
- Chassis: Sport chassis
- Window channel strips in black (rubber)
- front and rear floor mats
- Transmission: S tronic 7-speed
- Top speed limited to 210 km/h
- Interior mirror dimming
- Child lock
- Automatic air conditioning
- boot floor mat
- Loading floor
- LED taillights
- Light/rain sensor
- front center armrest
- Wheel: Alloy wheels, 5-Y-spoke (S-design)
- Tire pressure monitoring system
- Headlights using LED technology
- Fabric seat covers Index
- Seats: Rear seat backrest foldable
- Lane Departure Warning
- First aid kit with warning triangle
- Electronic immobilizer
- Central locking "Keyless-Go" without deadbolt



## Extra equipment

- AdBlue tank (24 liters) (larger tank for AdBlue solution to reduce nitrogen oxides in the exhaust gas using an SCR system)
- Audi connect Navigation & Infotainment (Online Points of Interest - Online Traffic Information Plus - Hazard Information - Weather Information - Wi-Fi Hotspot - Online News - Navigation with Google Satellite Maps - Online Search for Navigation Destinations - Online Voice Input - Highly Detailed 3D City Display - On-Street Parking - Online Radio - Hybrid Radio - User Profiles - Amazon Alexa Integration - Online Media Streaming - myAudi Navi. - Online Traffic Sign Information. - HoloRide Interface)
- On-board tools and jack (in the luggage compartment)
- Deletion of model designation and performance/technology lettering
- Electrically operated tailgate (The tailgate can be opened electrically by pressing the button on the vehicle key, in the driver's door, or the soft-touch button on the tailgate handle. Closing the tailgate is just as easy and convenient: simply press the button on the inside of the tailgate, the button in the driver's door, or the button on the vehicle key. A soft-close mechanism makes manual closing easier when necessary.)
- City Assistance Package (rearview camera displays the detection area behind the vehicle on the MMI touch display - exit warning of an impending collision with detected road users approaching from behind - rear cross traffic assist can warn of an impending collision with approaching moving objects (e.g., cars in cross traffic) when reversing at speeds up to approx. 15 km/h (e.g., when parking) - Audi pre sense basic and Audi pre sense rear)
- Business package (MMI Navigation plus with MMI touch - Audi phone box - 3-spoke leather steering wheel with multifunction plus - Heated front seats - Frameless, automatically dimming interior mirror - Electrically adjustable, heated and folding exterior mirrors, automatically dimming on both sides - High-beam assistant - Manual sunshade for rear door windows)
- Wheel: Spare wheel, space-saving
- Wheel: Winter light alloy wheels 5-parallel spokes (size 7.0 J x 17 with winter tires 225/50 R 17 - suitable for snow chains, maximum permissible speed 210 km/h)
- Front sports seats (with manual adjustment of seat height, seat longitudinal position, seat tilt, backrest tilt, headrest and belt height; with pronounced seat side bolsters for better lateral support in curves, extendable thigh support)
- Glazing: Sun protection glazing, tinted (rear window, rear door and side windows tinted)
- Mechanically swiveling towbar (Conveniently locks and unlocks via a release mechanism. - Mechanically swiveling ball head with electric release, controlled by a button in the luggage compartment - Ball shaft and head made of forged steel - Trailer stabilization via the electronic stability control (ESC) - Swiveling system socket allows continuous operation of electrical devices in the trailer or caravan, even while driving)
- Electrically adjustable, heated and folding exterior mirrors, automatically dimming on both sides (including curb view function for passenger-side exterior mirror with integrated LED turn signal, including heated windshield washer nozzles; the curb view function folds the passenger-side mirror down when reverse gear is engaged, giving the driver a better view of the curb edge)
- Hold assist (holds the vehicle indefinitely after stopping on typical road inclines and declines. The system is activated by pressing a button and allows the driver to start off comfortably.)
- Fuel tank with increased filling volume (54 l)
- Paint finish: Daytona Gray Pearl Effect
- Steering wheel: Leather steering wheel in a 3-spoke design with multifunction plus (The steering wheel impresses with its high-quality look and aluminum trim and feels good in the hand. Height and reach of the steering wheel are manually adjustable. For convenient operation of the extensive standard and optional infotainment features, the steering wheel is equipped with 12 multifunction buttons. It also includes paddle shifters for manually changing gears with an automatic transmission.)
- Assistance Package Tour (The Assistance Package Tour includes the following assistance systems: - adaptive speed assistant - traffic jam assistant - Audi active lane assist - predictive efficiency assistant - left turn assistant - evasive steering assistant - high beam assistant)
- Wheel: Deselect low rolling resistance tires, remove speed limiter (18 inch) (Tires 245/40 R 18 93Y)
- Wheel: Audi new car tire warranty (36-month term from vehicle handover to the first customer)
- Seats: 4-way lumbar support (electrically adjustable, horizontally and vertically)
- Front seat heating (heats seat and backrest center panels; with leather upholstery, sport seats and S sport seats also seat side bolsters - individually adjustable in multiple stages for driver and front passenger side via the climate control unit)



## Brief expert findings

Documents submitted	At the time of the inspection, the vehicle registration certificate Part 2 (title) was available, but the vehicle registration certificate Part 1 (document) was not. (Copy)
VIN comparison	The vehicle identification number (VIN) was read from the vehicle and its conformity with the submitted documents was confirmed by the undersigned during the inspection.
Inspection	The inspection conditions were sufficient for the assessment of the vehicle. Lifting equipment and/or a pit were available for examining the vehicle.
Test drive	No test drive/shunting maneuver was carried out during the inspection of the vehicle.
Engine function test	An engine test run was performed.

## Value reducing factors

No.	Component group	Description
1	Wheel / tyres	Tyre - front right side - Damaged - Replace
2	Wheel / tyres	Alloy rim - front right side - Scratch(es) - Loss in value
3	Door - front left side	Door - Scratch(es) - Paint
4	Door - front right side	Door - Scratch(es) - Paint
5	Rear bumper	Rear bumper - Scratch(es) - Paint
6	Vehicle glazing	Windscreen (Rissbildung) - Stone chips - Replace

## Wear and tear

No.	Component group	Description
1	Body	Underbody panelling - Scratched - No deduction
2	Front bumper	Front bumper - Stone chips - No deduction
3	Bonnet	Bonnet - Stone chips - No deduction

The vehicle shows signs of wear and tear commensurate with its age and use.

## Order/Scope of Order

An order was placed to prepare a sales report for the described vehicle. This report includes the following:

- Description of key vehicle information
- Documentation of equipment features  
(*Delivery by third-party service providers*)
- Documentation of damage, defects, missing parts
- Documentation of prior damage, unrepaired prior damage, repainting
- A brief visual or functional inspection of the equipment details, if possible.  
(*Functional testing of driver assistance systems is not included in the scope of services!*)
- a photographic documentation of the vehicle



## Basis for the order

This product is based on the guidelines for vehicle returns and valuations published by Alphabet Fleet GmbH. The expert makes the specific findings in each individual case objectively, within the framework of the prescribed standards, based on their own expertise.

The vehicle inspection takes place in a fully assembled, unassembled state.

Damage or defects that can only be detected during disassembly/diagnostic work or through further investigation remain within the realm of prognostic risk. An increased risk exists due to concealed defects caused by fraudulent misrepresentation and which were not identifiable by the expert.

Damage or defects resulting from normal use or wear and tear of the vehicle will be accepted in accordance with the applicable standard.

There was no explicit identification or monetary consideration of the expected features within the product.

Features which, in their nature and extent, slightly exceed normal use but do not constitute unacceptable damage, will be documented and indicated as signs of wear, if applicable.

Damage or defects that, according to the applicable standard, can no longer be attributed to normal use or wear and tear are listed under "Value Reducing Factors" in the product description.

Depending on the product specification, a monetary ID can be provided. If this takes place, the costs can be 100% d or pro rata depending on the vehicle's age and mileage.

## Previous damages

No apparent prior damage that had been repaired could be found on the vehicle.



Figure 1: Diagonal front (left)



Figure 2: Diagonal front (right)



Figure 3: Diagonal rear (left)



Figure 4: Diagonal rear (right)



Figure 5: Interior - front



Figure 6: Interior - rear



Figure 7: Instrument cluster



Figure 8: Instrument panel



Figure 9: Interior 360° view



Figure 10: Cargo area

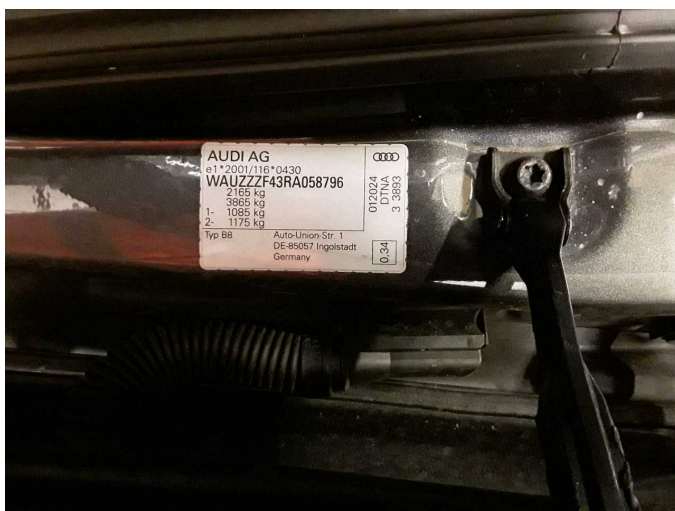


Figure 11: VIN



Figure 12: Mounted tyres



Figure 13: Documents



Figure 14: Additional tyres



Figure 15: Navigation



Figure 16: Misc.



Figure 17: Misc.

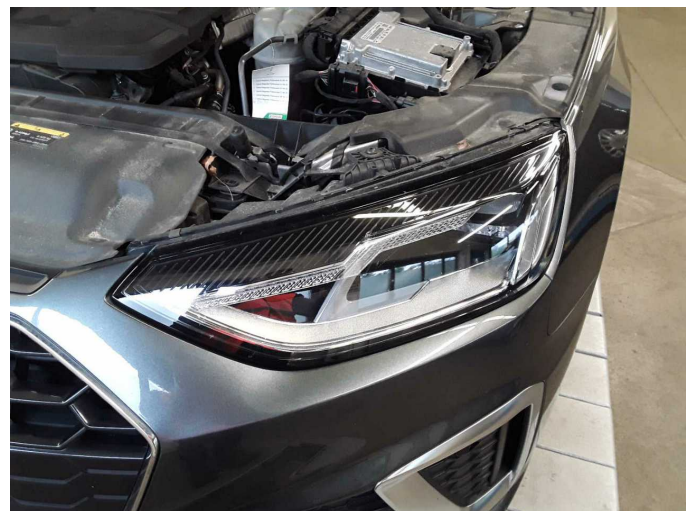


Figure 18: Misc.



Figure 19: Misc.



Figure 20: Misc.



Figure 21: Misc.



Figure 22: Misc.



Figure 23: Misc.



Figure 24: Misc.



Figure 25: Misc.



Figure 26: Misc.



Figure 27: Misc.



Figure 28: Misc.



Figure 29: Misc.



Figure 30: Misc.



Figure 31: Misc.



Damage 1: Wheel / tyres: Tyre - front right side - Damaged - Replace



Damage 1: Wheel / tyres: Tyre - front right side - Damaged - Replace



Damage 2: Wheel / tyres: Alloy rim - front right side - Scratch(es) - Loss in value



Damage 2: Wheel / tyres: Alloy rim - front right side - Scratch(es) - Loss in value



Damage 3: Door - front left side: Door - Scratch(es) - Paint



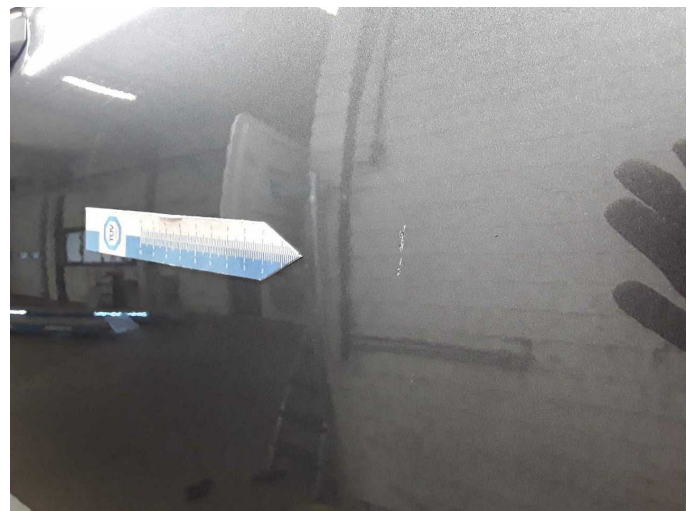
**Damage 3:** Door - front left side: Door - Scratch(es) - Paint



**Damage 3:** Door - front left side: Door - Scratch(es) - Paint



**Damage 4:** Door - front right side: Door - Scratch(es) - Paint



**Damage 4:** Door - front right side: Door - Scratch(es) - Paint



**Damage 5:** Rear bumper: Rear bumper - Scratch(es) - Paint



**Damage 5:** Rear bumper: Rear bumper - Scratch(es) - Paint



**Damage 5:** Rear bumper: Rear bumper - Scratch(es) - Paint



**Damage 5:** Rear bumper: Rear bumper - Scratch(es) - Paint



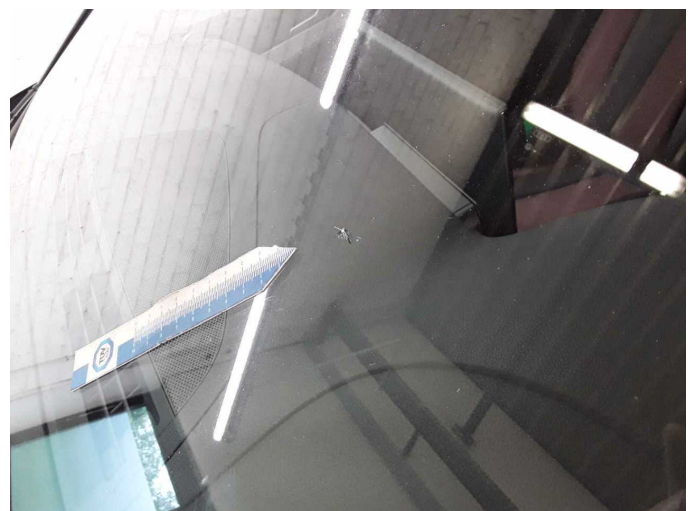
**Damage 5:** Rear bumper: Rear bumper - Scratch(es) - Paint



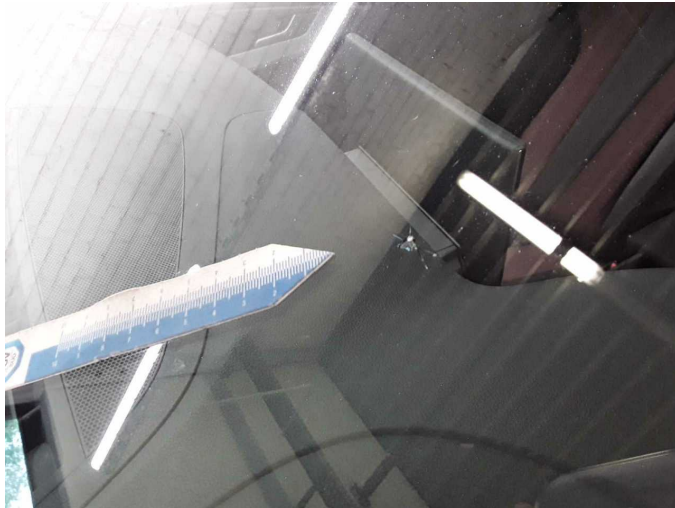
**Damage 5:** Rear bumper: Rear bumper - Scratch(es) - Paint



**Damage 6:** Vehicle glazing: Windscreen (Rissbildung) - Stone chips - Replace



**Damage 6:** Vehicle glazing: Windscreen (Rissbildung) - Stone chips - Replace



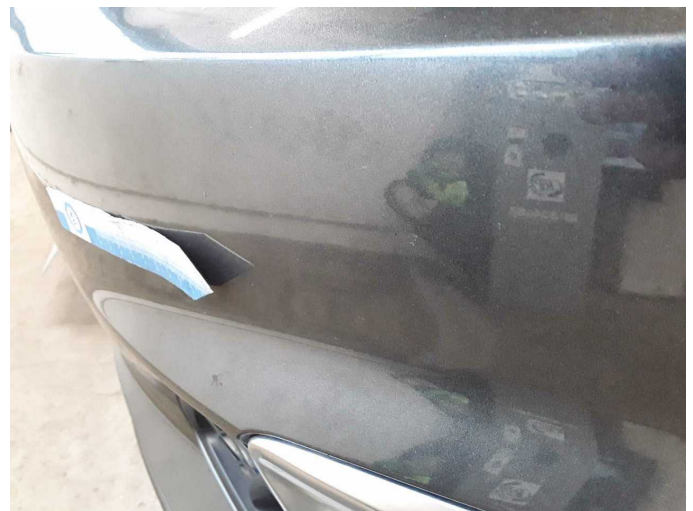
**Damage 6:** Vehicle glazing: Windscreen (Rissbildung) - Stone chips - Replace



**Wear and tear 1:** Body: Underbody panelling - Scratched - No deduction



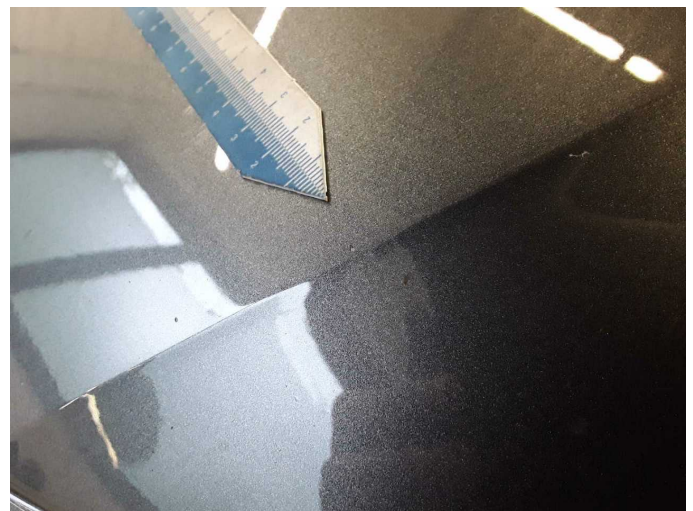
**Wear and tear 2:** Front bumper: Front bumper - Stone chips - No deduction



**Wear and tear 2:** Front bumper: Front bumper - Stone chips - No deduction



**Wear and tear 3:** Bonnet: Bonnet - Stone chips - No deduction



**Wear and tear 3:** Bonnet: Bonnet - Stone chips - No deduction



# Wartungshistorie

(gemäß Auftraggeber Informationen)

Fahrgestellnummer: WAUZZZF43RA058796  
Hersteller / Modell: AUDI AUDI A4 Avant 35 TDI S tronic S line

Datum	KM-Stand	Beschreibung
18.02.2026	111.170	Bremsflüssigkeit; Bremsflüssigkeit ern
01.12.2025	99.943	Motoröl b. Wartung; Ölfilter ern; Ölwechsel; Wartung Sonstiges
20.10.2025	93.318	Luffiltereinsatz ern; Regelwartungsdienst
30.05.2025	73.140	Motoröl b. Wartung; Ölfilter ern; Ölwechsel; Wartung Sonstiges
28.03.2025	65.395	Getriebeöl ern/prüfen; Kraftstofffilter ern; Regelwartungsdienst; Reparatur Sonstiges
06.12.2024	47.667	Motoröl b. Wartung; Ölfilter ern; Ölwechsel; Wartung Sonstiges
06.09.2024	31.659	Regelwartungsdienst
21.06.2024	20.656	Motoröl b. Wartung; Ölfilter ern; Ölwechsel; Wartung Sonstiges