

Expertise

Protocol number: 46056542
Order No. / Reference: 26528408
Inspection date: 17 Jun 2026

Manufacturer: Ford

Model: Focus 1.5 EcoBlue Start-Stop-System Aut. TITANIUM X

VIN: WF0NXXGCHNPD64332



Vehicle details

Manufacturer / Type / Model / Equipment

Ford Focus 1.5 EcoBlue Start-Stop-System Aut. TITANIUM X

Vehicle Identification number WF0NXXGCHNPD64332

Mileage (Read) 34,546 km

First registration 5 May 2023

Number of holders 1

Power / Engine displacement 85 kw / 1,499 ccm

Fuel type / Cylinder Diesel / 4

Gearbox / Number of gears Automatic / 8

Type of drive Front drive

Type of vehicle Station wagon

Colour / colour code Moondust Silber Metallic

Doors / Seats 5 / 5

Upholstery type Cloth

Colour of upholstery Black-Anthracite

readiness to drive Roadworthy



Vehicle details			
Maintenance booklet / proof	digital proof / complete	Next maintenance in	18 %
Last service on / at	05/2025 at 21,455 km		
Key is / should be	2 / 2	FZG documents	ZB#2 (B) was available (copy), ZB#1 (S) was not available.
		Letter No.	GT890737
Previous damage / Accident	Detectable	Repainting	Detectable
Inspection conditions	sufficient	Lifting equipment / pit	No
Test drive	Not performed	Engine function test	Performed
readiness to drive	Roadworthy		
Manufacturer key number/ type code number	8566 / BYD 00002		
Emission standard	EURO6;WLTP;AP;PI/CI; M, N1 I	fine dust sticker	
Permitted total weight	1,910 kg	Empty weight	

Tyres

Mounted tyres				
#	Tyre size	Type of tyre	Manufacturer	Tread depth
1)	205/60 R16 92V	Summer tyres on Steel rim with wheel cover	Goodyear	6mm / 6mm
2)	205/60 R16 92V	Summer tyres on Steel rim with wheel cover	Goodyear	6mm / 6mm

Additional tyres				
#	Tyre size	Type of tyre	Manufacturer	Tread depth
1)	205/60 R16 92H	Winter tyres on Light alloy	Fulda	7mm / 7mm
2)	205/60 R16 92H	Winter tyres on Light alloy	Fulda	7mm / 7mm

Replacement				
Typ	Tyre size	Type of tyre	Manufacturer	Tread depth
	Tirefit	Expiration date 03/2027		

Legend: Tread depth information for the left tire is listed first, for the right tire it is listed second on the axle in the direction of travel.



Equipment

Standard equipment

- Airbag: Passenger airbag deactivation
- Anti-lock braking system (ABS) with electronic brake force distribution (EBD)
- Tires: 6.5 J x 16 design wheels (4) with 205/60 R16 tires
- Fabric headliner
- Diesel particulate filter (DPF)
- Tachometer
- Electronic Safety and Stability Program (ESP)
- Electric windows front and rear
- FordKeyFree system including Ford Power start function
- Luggage compartment cover
- Speed limiter
- Transmission: 8-speed automatic transmission
- Back window, heater
- Interior lighting with LED technology
- Intelligent security system
- Air conditioning with automatic temperature control
- Headrests: 2 front and 3 rear, height adjustable
- LED taillights
- Steering wheel: 3-spoke design
- Make-up mirrors in driver and passenger sun visors
- Center console "Premium" front
- Navigation: Ford SYNC 4 including Ford navigation system with AppLink, 13.2" touchscreen and DAB/DAB+
- Upholstery: Cloth
- Pre-Collision Assist
- Tire Pressure Monitoring System (TPMS)
- Windscreen wipers with rain sensor (sensitivity adjustable)
- Headlight assistant with day/night sensor
- Selective driving mode switch
- Electromechanical speed-dependent power steering
- Seats: Driver's seat height adjustable
- Seats: Front sports seats with enhanced lateral support
- Phone accessories: Inductive charging station for mobile devices
- Variable radiator air intake
- Electronic immobilizer
- Central locking with remote control and remote luggage compartment release
- Ambient lighting, front
- Exterior mirrors painted in body color, electrically adjustable, heated and foldable
- Hill start assist
- Roof spoiler painted in car color
- Digital instrument panel 12.3" (31.2 cm screen diagonal)
- Electronic Shifter
- Lane keeping assist including lane keeping assist
- Electric parking brake with auto-hold function
- FordPass Connect including live traffic information
- Luggage compartment lighting
- Cruise control
- Illuminated glove compartment
- Rear window wiper
- Interior mirror, automatically dimming
- Isofix bracket
- Knee pads on the center console
- Paint finish: Solid
- LED headlights
- Adjustable steering column
- Armrest - centre, rear
- MyKey key system (individually programmable second key)
- Emergency call assistant
- Front and rear parking pilot system
- Post-Collision Assist
- Tire repair kit
- Rear view camera
- Headlight low beam
- Side windows from the 2nd row of seats and rear window, dark tinted.
- Seats: Passenger seat height-adjustable, manually
- Seats: Rear seat backrest
- Start-stop system
- Carpet floor mats front and rear, velour
- 2 USB ports in the center console, rear
- Warning system for unfastened seat belts for the 1st and 2nd rows of seats



Extra equipment

- Paint finish: Metallic
- Package: Driver Assistance Package II (Drive Assist Intelligent adaptive cruise control Lane keeping assist Traffic jam assist with Stop&Go Traffic sign recognition Wrong-way driver warning radio Evasive steering assist Distance display and distance warning Driver drowsiness detection High beam assist (in conjunction with adaptive LED matrix headlights with glare-free high beam assist) Blind spot assist with cross traffic alert including emergency braking function (when reversing out of parking spaces) and trailer recognition Rear view camera with split view Electrically folding exterior mirrors with surround view)
- Package: Easy Parking (Active Parking Assist with parking and exiting function (in conjunction with 8-speed automatic transmission including semi-automated vehicle guidance) - Door edge protection - Rearview camera with "Split View" technology)
- Package: Winter (heated windscreen - heated steering wheel - individually and variably heated front seats)
- Seats: Ford ergonomic seat (driver and front passenger seat, 18-way adjustable: - position, height and tilt of the backrest and seat cushion manually adjustable (in conjunction with EcoBoost Hybrid - front passenger seat, 2-way adjustable) - thigh support, manually extendable - lumbar support, 4-way electrically adjustable)

Retrofitted equipment

- Fire extinguisher
- winter tires
- Rubber mats

Brief expert findings

Documents submitted	At the time of the inspection, the vehicle registration certificate Part 2 (title) was available, but the vehicle registration certificate Part 1 (document) was not. (Copy)
VIN comparison	The vehicle identification number (VIN) was read from the vehicle and its conformity with the submitted documents was confirmed by the undersigned during the inspection.
Inspection	The inspection conditions were sufficient for the assessment of the vehicle. No lifting equipment or pit was available for inspecting the vehicle. Therefore, inspection of the vehicle's underside was only possible to a limited extent.
Test drive	No test drive/shunting maneuver was carried out during the inspection of the vehicle.
Engine function test	An engine test run was performed.
readiness to drive	The vehicle was roadworthy at the time of inspection.

Value reducing factors

No.	Component group	Description
1	Sill - left side	Sill - Dent / paintcoat damage - Smart repair
2	Rear bumper	Rear bumper - dent(s) - Repair and paint
3	Mudguard - left side	Mudguard - left side - Scratch(es) - Paint
4	Front bumper	Front bumper - Damaged - Replace
5	Roof	Roof (Dellen/Wellig) - Deformed - Repair and paint

Wear and tear

No.	Component group	Description
1	Wheel / tyres	Wheel cover - rear left side - Scratched - No deduction

The vehicle shows signs of wear and tear commensurate with its age and use.

Missing parts

Description

- Documents - Log book (Zusätzliche Betriebsanleitung)
- Documents - Service book



Previous damages

No.	Previous damage	Extent of damage (Net)
1	Rear, Provided by user / customer, from 10 Jul 2025	1.453,79 €
2	Rear, Provided by user / customer, from 15 May 2024	5.786,33 €

Repainting

No.	Repainting
1	Boot lid / rear door, Professionally carried out, Invoice of repair done Non-existent

Paint coat thickness measurement

Boot lid / rear door 250 µm |

Order/Scope of Order

An order was placed to prepare a sales report for the described vehicle. This report includes the following:

- Description of key vehicle information
- Documentation of equipment features
(*Delivery by third-party service providers*)
- Documentation of damage, defects, missing parts
- Documentation of prior damage, unrepaired prior damage, repainting
- A brief visual or functional inspection of the equipment details, if possible.
(*Functional testing of driver assistance systems is not included in the scope of services!*)
- a photographic documentation of the vehicle

Basis for the order

This product is based on the guidelines for vehicle returns and valuations published by Alphabet Fleet GmbH. The expert makes the specific findings in each individual case objectively, within the framework of the prescribed standards, based on their own expertise.

The vehicle inspection takes place in a fully assembled, unassembled state.

Damage or defects that can only be detected during disassembly/diagnostic work or through further investigation remain within the realm of prognostic risk. An increased risk exists due to concealed defects caused by fraudulent misrepresentation and which were not identifiable by the expert.

Damage or defects resulting from normal use or wear and tear of the vehicle will be accepted in accordance with the applicable standard.

There was no explicit identification or monetary consideration of the expected features within the product.

Features which, in their nature and extent, slightly exceed normal use but do not constitute unacceptable damage, will be documented and indicated as signs of wear, if applicable.

Damage or defects that, according to the applicable standard, can no longer be attributed to normal use or wear and tear are listed under "Value Reducing Factors" in the product description.

Depending on the product specification, a monetary ID can be provided. If this takes place, the costs can be 100% d or pro rata depending on the vehicle's age and mileage.

Previous damages

According to available information previous damages were repaired at the vehicle. Traces of repairs, which allow conclusions about the area of repair, were not recognizable during the inspection.



Figure 1: Diagonal front (left)



Figure 2: Diagonal front (right)



Figure 3: Diagonal rear (left)



Figure 4: Diagonal rear (right)

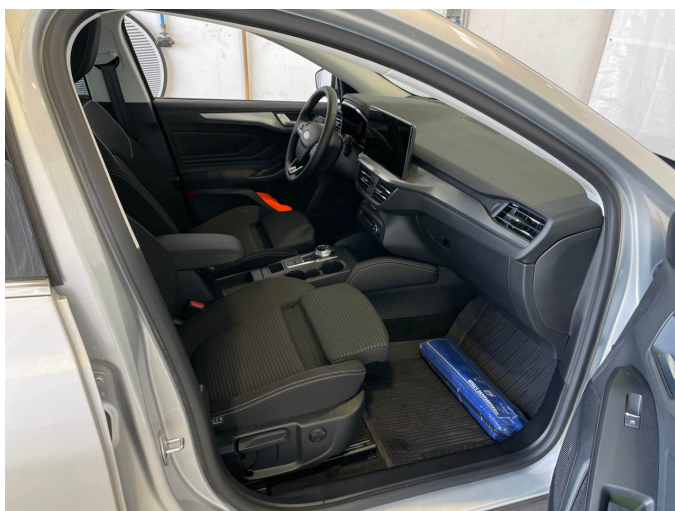


Figure 5: Interior - front



Figure 6: Interior - rear



Figure 7: Instrument cluster



Figure 8: Instrument panel



Figure 9: Interior 360° view



Figure 10: Cargo area



Figure 11: VIN



Figure 12: Mounted tyres



Figure 13: Documents



Figure 14: Additional tyres



Figure 15: Navigation



Figure 16: Misc.

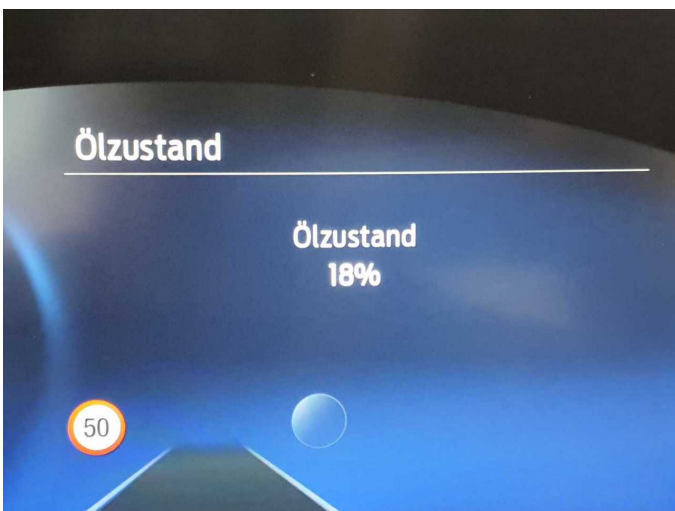


Figure 17: Misc.



Figure 18: Misc.



Figure 19: Misc.



Figure 20: Misc.

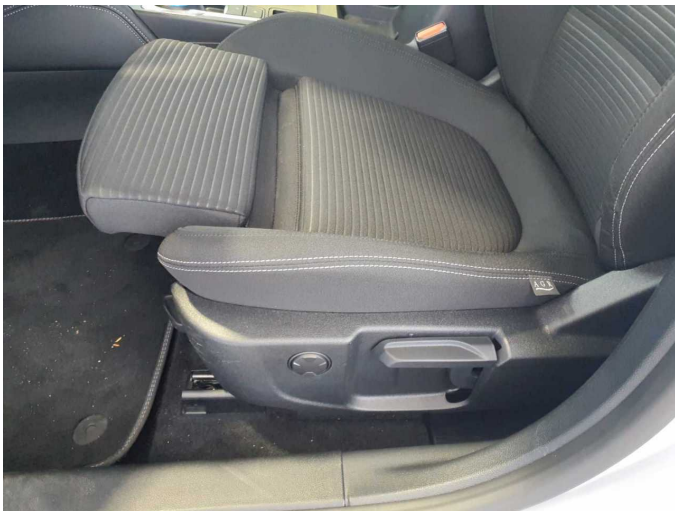


Figure 21: Misc.



Figure 22: Misc.



Figure 23: Misc.

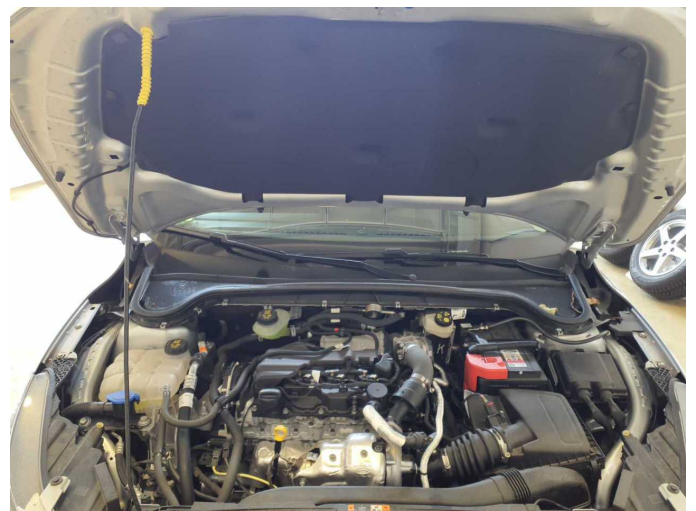


Figure 24: Misc.



Figure 25: Misc.



Figure 26: Misc.



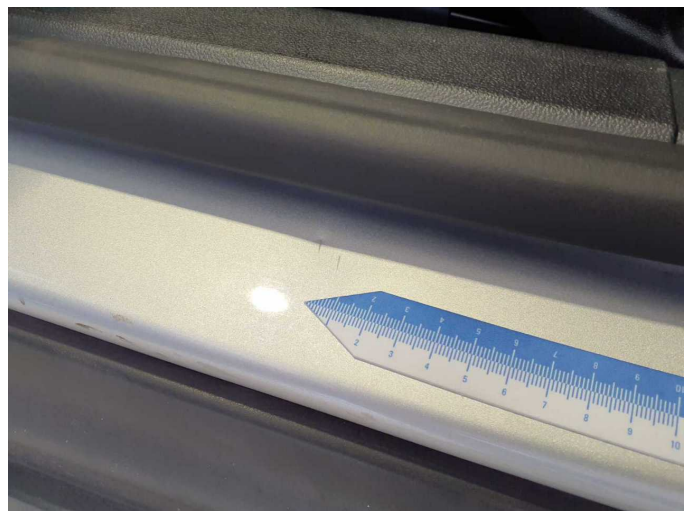
Figure 27: Misc.



Figure 28: Misc.



Damage 1: Sill - left side: Sill - Dent / paintcoat damage - Smart repair



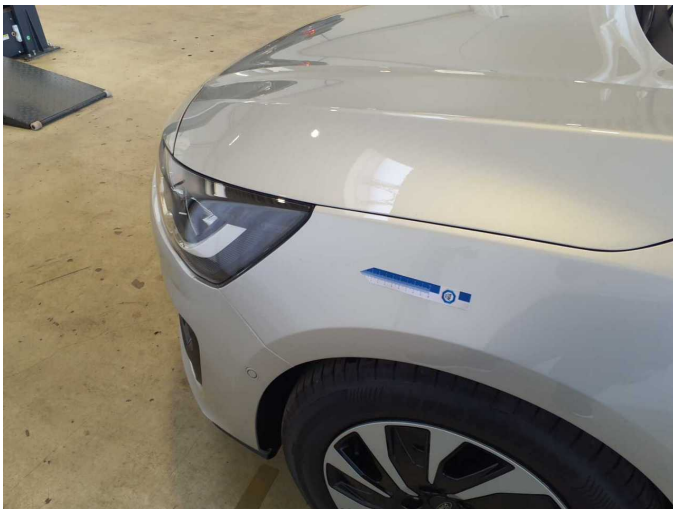
Damage 1: Sill - left side: Sill - Dent / paintcoat damage - Smart repair



Damage 2: Rear bumper: Rear bumper - dent(s) - Repair and paint



Damage 2: Rear bumper: Rear bumper - dent(s) - Repair and paint



Damage 3: Mudguard - left side: Mudguard - left side - Scratch(es) - Paint



Damage 3: Mudguard - left side: Mudguard - left side - Scratch(es) - Paint



Damage 4: Front bumper: Front bumper - Damaged - Replace



Damage 4: Front bumper: Front bumper - Damaged - Replace



Damage 4: Front bumper: Front bumper - Damaged - Replace



Damage 4: Front bumper: Front bumper - Damaged - Replace



Damage 4: Front bumper: Front bumper - Damaged - Replace



Damage 4: Front bumper: Front bumper - Damaged - Replace



Damage 4: Front bumper: Front bumper - Damaged - Replace



Damage 5: Roof: Roof (Dellen/Wellig) - Deformed - Repair and paint



Damage 5: Roof: Roof (Dellen/Wellig) - Deformed - Repair and paint



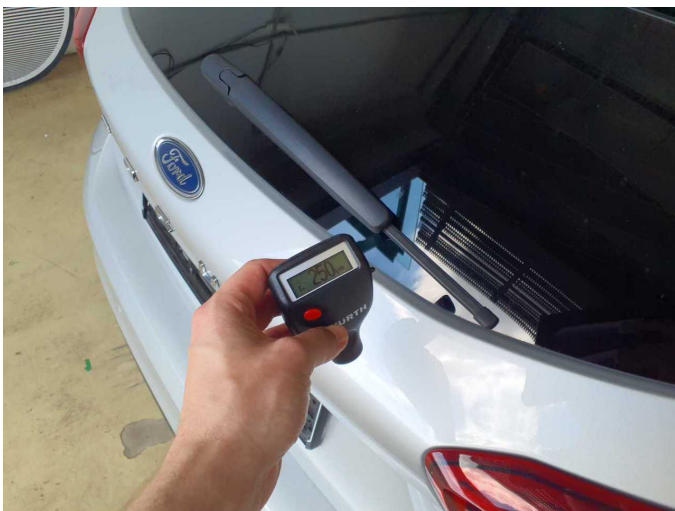
Wear and tear 1: Wheel / tyres: Wheel cover - rear left side - Scratched - No deduction



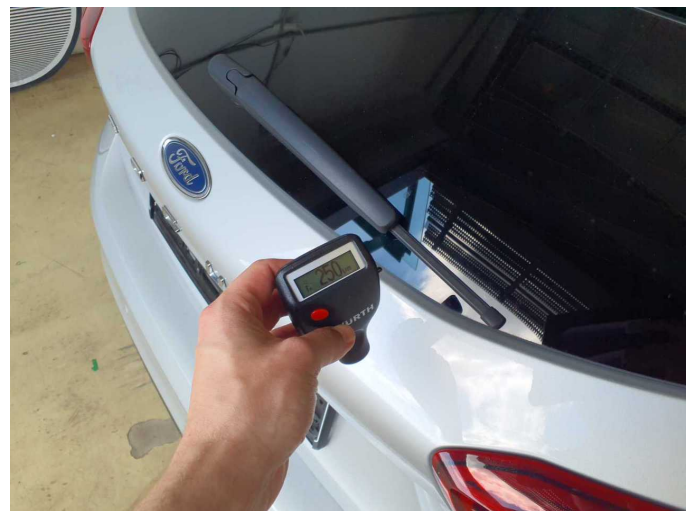
Wear and tear 1: Wheel / tyres: Wheel cover - rear left side - Scratched - No deduction



Wear and tear 1: Wheel / tyres: Wheel cover - rear left side - Scratched - No deduction



Repainting 1: Boot lid / rear door



Boot lid / rear door: 250 µm



Wartungshistorie

(gemäß Auftraggeber Informationen)

Fahrgestellnummer: WF0NXXGCHNPD64332
Hersteller / Modell: FORD FORD Focus 1.5 EcoBlue Start-Stopp-System Aut.
TITANIUM X

Datum	KM-Stand	Beschreibung
14.05.2025	21.455	Bremsflüssigkeit; Bremsflüssigkeit ern; Motoröl b. Wartung; Ölfilter ern; Regelwartungsdienst; Systemtest/Eigendiagnose; Wartung Sonstiges