

Expertise

Protocol number: 45875961
Order No. / Reference: 26413211
Inspection date: 9 Jun 2026

Manufacturer: Audi

Model: Q4 e-tron 40

VIN: WAUZZZFZ8PP038873



Vehicle details

Manufacturer / Type / Model / Equipment

Audi Q4 e-tron 40

Vehicle Identification number WAUZZZFZ8PP038873

Mileage (Read) 71,162 km

First registration 31 Mar 2023

Number of holders 1

Power / Engine displacement 70 kw /

Fuel type / Cylinder Electric / 0

Gearbox / Number of gears Direct drive / 1

Type of drive Rear drive

Type of vehicle SUV

Colour / colour code Geysirblau Metallic

Doors / Seats 5 / 5

Upholstery type Cloth

Colour of upholstery Black-Anthracite



Vehicle details			
Maintenance booklet / proof	digital proof / complete	Next maintenance in	10 Monat(e)
Last service on / at	05/2025 at 48,764		
Key is / should be	2 / 2	FZG documents	ZB#2 (B) was available (copy), ZB#1 (S) was not available.
		Letter No.	GS453788
Previous damage / Accident	None detectable	Repainting	None detectable
Inspection conditions	sufficient	Lifting equipment / pit	No
Test drive	Not performed	Engine function test	Performed
Manufacturer key number/ type code number	0588 / BZK 00070		
Emission standard	2017/1151;WLTP;reine Elektrofz	fine dust sticker	
Permitted total weight	2,640 kg	Empty weight	

Tyres

Mounted tyres				
#	Tyre size	Type of tyre	Manufacturer	Tread depth
1)	235/55 R19 101T	Winter tyres on Steel rim with wheel cover	Bridgestone	6mm / 6mm
2)	235/55 R19 101T	Winter tyres on Steel rim with wheel cover	Bridgestone	6mm / 6mm
Additional tyres				
#	Tyre size	Type of tyre	Manufacturer	Tread depth
1)	235/50 R20 100T	Summer tyres on Light alloy	Bridgestone	5mm / 5mm
2)	235/50 R20 101V	Summer tyres on Light alloy	Continental	4mm / 4mm

Legend: Tread depth information for the left tire is listed first, for the right tire it is listed second on the axle in the direction of travel.



Equipment

Standard equipment

- Combo 2 charging socket (EU)
- LED taillights
- Steering wheel: Double-spoke leather steering wheel with multifunction
- Acoustic vehicle warning system
- Anti-lock braking system (ABS)
- Audi connect Remote & Control for MMI plus and pro
- Evasive steering assist and turning assist
- Vehicle tool kit
- Fabric headliner
- Decorative inlay, black tactile lacquer
- Rear parking sensors
- Chassis: Comfort chassis
- Transmission: 1-speed direct drive
- Interior lighting
- i-Size child seat anchors on the front passenger side, i-Size and Top Tether anchors on the outer rear seats
- Headrests (5)
- Model name and performance/technology lettering
- Package: Gloss Package
- Wheel: Tire pressure monitoring system
- Radio: MMI Radio
- Seats: Standard front seats
- Seats: Front seats manually adjustable
- Lane Departure Warning
- Stationary air conditioning
- First aid kit with warning triangle
- Electronic immobilizer
- Central locking
- Mode 3 charging cable for public charging
- LED headlights
- Airbag for driver and front passenger
- Airbag: Front side airbags, with head airbag and front interaction airbag
- Audi connect emergency call and service
- Audi pre sense front
- Electrically adjustable/heated exterior mirrors
- third brake light
- Aluminum roof rails
- Tachometer
- Electronic Stability Control (ESC)
- front and rear floor mats
- rear window wiper
- Interior mirror dimming
- Automatic air conditioning
- Comfort center armrest in front
- Light and rain sensor
- On-board charger up to 11 kW (AC)
- Upholstery: Fabric Index
- Wheel: Steel wheels 8.0 J x 19"
- Power steering
- Seats: Rear seat backrest foldable
- Speed limiter without cruise control and without adaptive cruise control.
- 12-volt socket
- Camera-based traffic sign recognition
- Green thermal insulation glazing



Extra equipment

- Deletion of model designation and performance/technology lettering
- Electrically opening and closing tailgate with sensor-controlled tailgate release (The tailgate opens electrically after unlocking and can be closed again at the touch of a button. Closing the tailgate is just as easy and convenient as opening it, using the button on the inside of the tailgate, the vehicle key button, or the button in the driver's door. The soft-close function makes manual closing easier when necessary. The opening angle of the tailgate can be limited in areas with low ceilings.)
- Heat pump (Within the system limits, the heat pump uses the waste heat from the electric drive components and the outside air to heat the vehicle interior. This supports the provision of the required heating power at low outside temperatures. The electrical energy not needed for heating can, for example, also have a positive effect on the vehicle's range.)
- Navigation: MMI Navigation plus (11.6-inch MMI Navigation plus with MMI touch including Audi connect Navigation & Infotainment - camera-based traffic sign recognition - 10.25-inch Audi virtual cockpit with two display options "Classic" and "Sport" - voice control)
- Package: Air conditioning package
- Package: Comfort package (electrically adjustable, heated and folding exterior mirrors, automatically dimming on both sides, with integrated LED turn signals and curb view function for the passenger-side exterior mirror, aspherical mirror glass on the left, convex on the right, including heated windshield washer nozzles - automatically dimming, frameless interior mirror - 4-way lumbar support for the front seats - projection lights in the exterior mirrors)
- Package: Dynamic package plus (Audi drive select - progressive steering - suspension with damper control)
- Steering wheel: Double-spoke leather sports steering wheel, flattened at the top and bottom, with multifunction controls and paddle shifters (The double-spoke leather sports steering wheel, flattened at the top and bottom, impresses with its sporty look and feels good in the hand. The height and reach of the steering wheel are manually adjustable.)
- Wheels: Winter steel wheels with full wheel covers (front size: 8.0 J x 19 with 235/55 R 19 tires, rear size: 8.0 J x 19 with 255/50 R 19 tires - suitable for snow chains, maximum permissible speed 190 km/h)
- Audi connect navigation & infotainment plus
- Comfort key without Safelock (The vehicle can be unlocked at all doors and the tailgate via wireless communication. The comfort key simply needs to be carried and does not need to be actively used. The vehicle can be locked again using the sensors on the door handles. The engine is started and stopped using the engine start/stop button.)
- Front seat heating (heats seat and backrest center section (standard seats in fabric), otherwise seat and backrest center section as well as seat side bolsters - individually adjustable in 3 stages for driver and front passenger via direct selection button on the climate control unit)
- High Beam Assist (The High Beam Assist uses a camera system to automatically detect oncoming traffic, vehicles ahead, and urban light sources within the system's limitations. Based on this information, the high beams are automatically switched on or off. The system thus improves the driver's visibility and increases comfort.)
- Package: Assistance Package Plus (Adaptive Cruise Control, the system uses a radar sensor to detect vehicles ahead within the system's limits and maintains the set speed and distance as constant as possible within the control range. - Speed limiter - Parking Assist Plus, supports the driver when parking and maneuvering forwards and backwards with acoustic signals and visual display with virtual lane guidance. - Rearview camera)
- Package: S line exterior (S line bumpers with bottom line all around in contrasting paint finish Manhattan Grey Metallic - Wheels, 5-Y-spoke, 8.0 J / 9.0 J x 20, tires 235/50 / 255/45 R 20 - S line exterior differentiations with S line emblem on the fenders - Sport suspension)
- Paint finish: Metallic
- Towing device (The mechanically swiveling towing device can be conveniently locked and unlocked via a release mechanism - ball head mechanically swiveling, with electric release - ball rod and head made of forged steel - trailer stabilization via the electronic stability control (ESC) - the integrated swiveling system socket allows continuous operation of electrical devices in the trailer or caravan while driving)
- Wheels: Light alloy wheels (4 pieces) in 5-Y-spoke design, graphite grey, polished (front size: 8.0 J x 20 with 235/50 R 20 tires, rear size: 9.0 J x 20 with 255/45 R 20 mobility tires)



Brief expert findings

Documents submitted	At the time of the inspection, the vehicle registration certificate Part 2 (title) was available, but the vehicle registration certificate Part 1 (document) was not. (Copy)
VIN comparison	The vehicle identification number (VIN) was read from the vehicle and its conformity with the submitted documents was confirmed by the undersigned during the inspection.
Inspection	The inspection conditions were sufficient for the assessment of the vehicle. No lifting equipment or pit was available for inspecting the vehicle. Therefore, inspection of the vehicle's underside was only possible to a limited extent.
Test drive	No test drive/shunting maneuver was carried out during the inspection of the vehicle.
Engine function test	An engine test run was performed.

Value reducing factors

No.	Component group	Description
1	Engine	Engine cover (im vorderen Motorraum) - Damage caused by marten / rodent - Replace
2	Door - front left side	Door handle - outside - Scratch(es) - Smart repair
3	Roof	Roof rail - left side - Scratch(es) - Smart repair
4	Rear bumper	Rear bumper - Scratch(es) - Smart repair
5	Door - front right side	Door edge - Scratch(es) - Smart repair
6	Door - front left side	Door edge - Scratch(es) - Smart repair
7	Door - rear right side	Door edge - Scratch(es) - Smart repair
8	Door - rear left side	Door edge - Scratch(es) - Smart repair
9	Boot lid / rear door	Boot lid (Spoiler) - Scratch(es) - Paint

Wear and tear

No.	Component group	Description
1	Vehicle glazing	Windscreen - Stone chips - No deduction
2	Front bumper	Front bumper - Stone chips - No deduction
3	Bonnet	Bonnet - Scratch(es) - Paint

The vehicle shows signs of wear and tear commensurate with its age and use.

Missing parts

Description

Equipment - Tirefit complete

Order/Scope of Order

An order was placed to prepare a sales report for the described vehicle. This report includes the following:

- Description of key vehicle information
- Documentation of equipment features
(*Delivery by third-party service providers*)
- Documentation of damage, defects, missing parts
- Documentation of prior damage, unrepaired prior damage, repainting
- A brief visual or functional inspection of the equipment details, if possible.
(*Functional testing of driver assistance systems is not included in the scope of services!*)
- a photographic documentation of the vehicle



Basis for the order

This product is based on the guidelines for vehicle returns and valuations published by Alphabet Fleet GmbH. The expert makes the specific findings in each individual case objectively, within the framework of the prescribed standards, based on their own expertise.

The vehicle inspection takes place in a fully assembled, unassembled state.

Damage or defects that can only be detected during disassembly/diagnostic work or through further investigation remain within the realm of prognostic risk. An increased risk exists due to concealed defects caused by fraudulent misrepresentation and which were not identifiable by the expert.

Damage or defects resulting from normal use or wear and tear of the vehicle will be accepted in accordance with the applicable standard.

There was no explicit identification or monetary consideration of the expected features within the product.

Features which, in their nature and extent, slightly exceed normal use but do not constitute unacceptable damage, will be documented and indicated as signs of wear, if applicable.

Damage or defects that, according to the applicable standard, can no longer be attributed to normal use or wear and tear are listed under "Value Reducing Factors" in the product description.

Depending on the product specification, a monetary ID can be provided. If this takes place, the costs can be 100% d or pro rata depending on the vehicle's age and mileage.

Previous damages

No apparent prior damage that had been repaired could be found on the vehicle.



Figure 1: Diagonal front (left)



Figure 2: Diagonal front (right)



Figure 3: Diagonal rear (left)



Figure 4: Diagonal rear (right)



Figure 5: Interior - front



Figure 6: Interior - rear



Figure 7: Instrument cluster



Figure 8: Instrument panel



Figure 9: Interior 360° view



Figure 10: Cargo area



Figure 11: VIN



Figure 12: Mounted tyres



Figure 13: Documents



Figure 14: Additional tyres

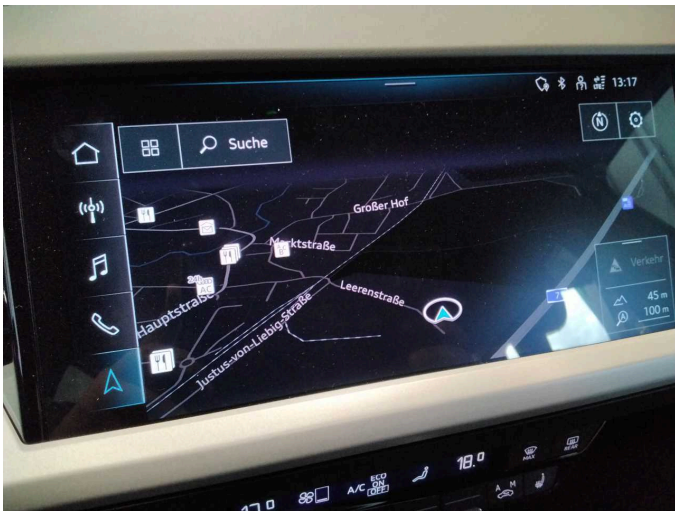


Figure 15: Navigation



Figure 16: Misc.

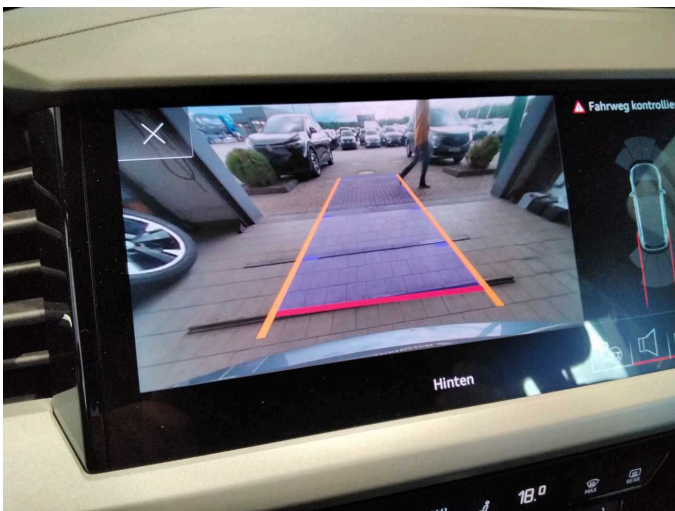


Figure 17: Misc.



Figure 18: Misc.



Figure 19: Misc.



Figure 20: Misc.

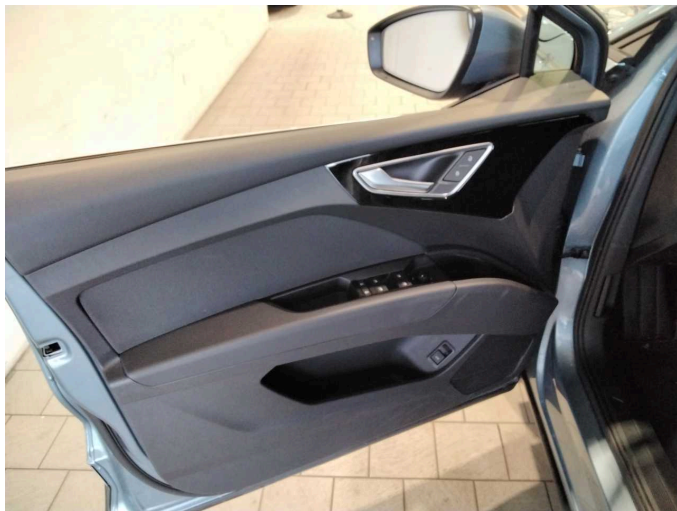


Figure 21: Misc.

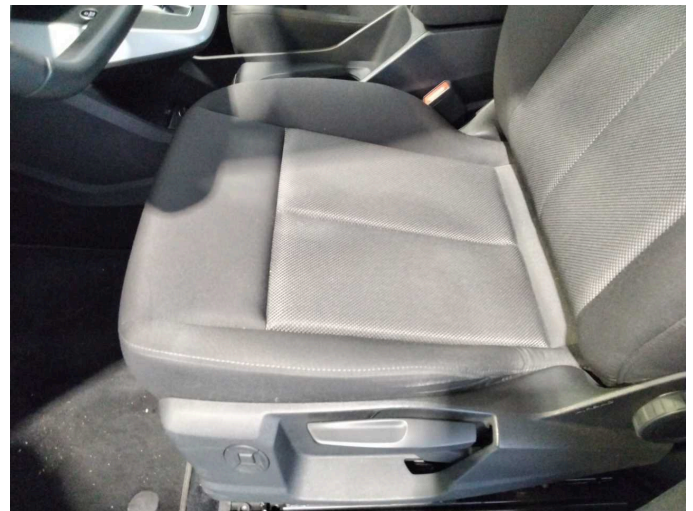


Figure 22: Misc.

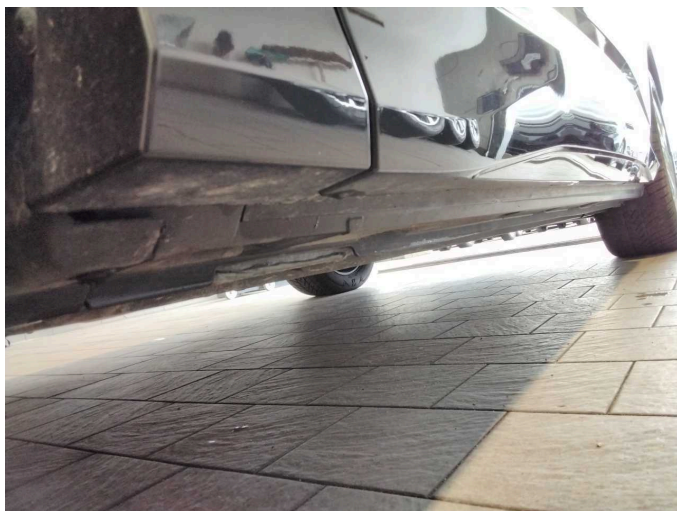


Figure 23: Misc.



Figure 24: Misc.

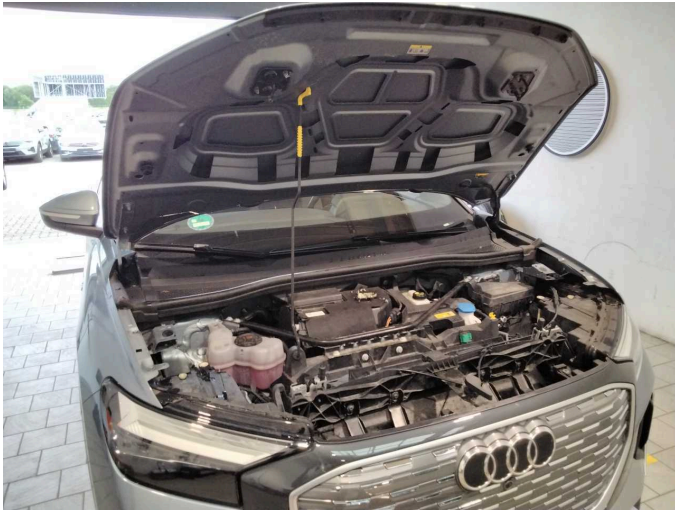


Figure 25: Misc.



Figure 26: Misc.

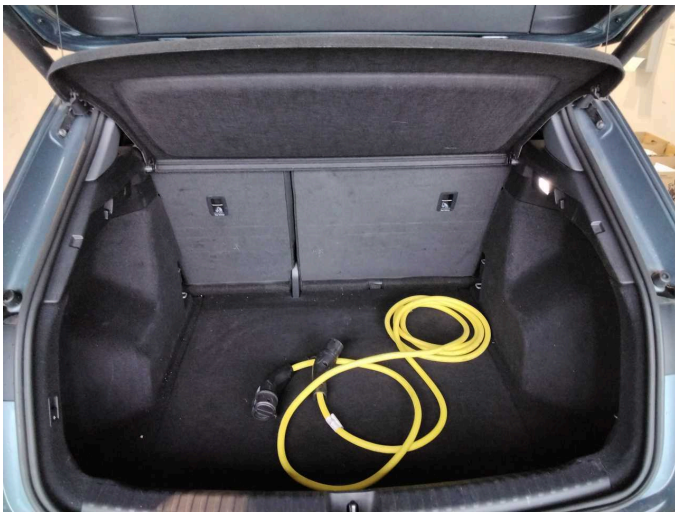


Figure 27: Misc.



Figure 28: Misc.

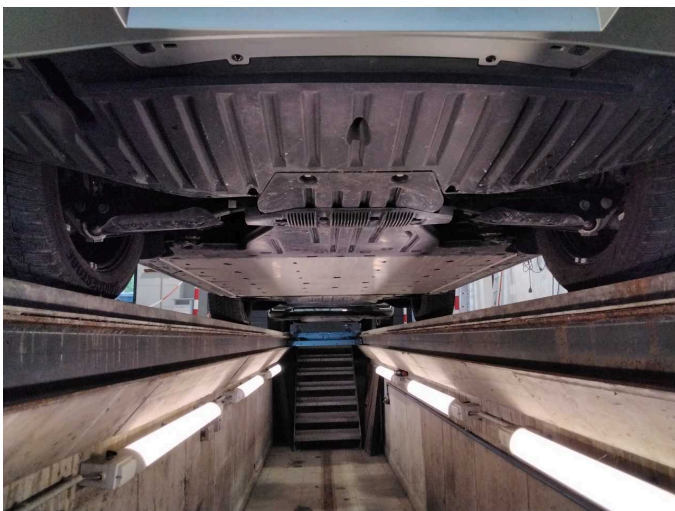


Figure 29: Misc.



Figure 30: Misc.



Damage 1: Engine: Engine cover (im vorderen Motorraum) - Damage caused by marten / rodent - Replace



Damage 1: Engine: Engine cover (im vorderen Motorraum) - Damage caused by marten / rodent - Replace



Damage 2: Door - front left side: Door handle - outside - Scratch(es) - Smart repair



Damage 2: Door - front left side: Door handle - outside - Scratch(es) - Smart repair



Damage 3: Roof: Roof rail - left side - Scratch(es) - Smart repair



Damage 3: Roof: Roof rail - left side - Scratch(es) - Smart repair



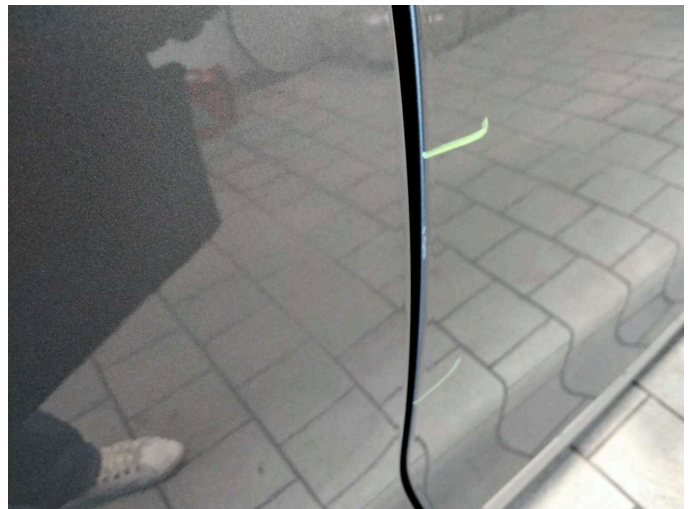
Damage 4: Rear bumper: Rear bumper - Scratch(es) - Smart repair



Damage 4: Rear bumper: Rear bumper - Scratch(es) - Smart repair



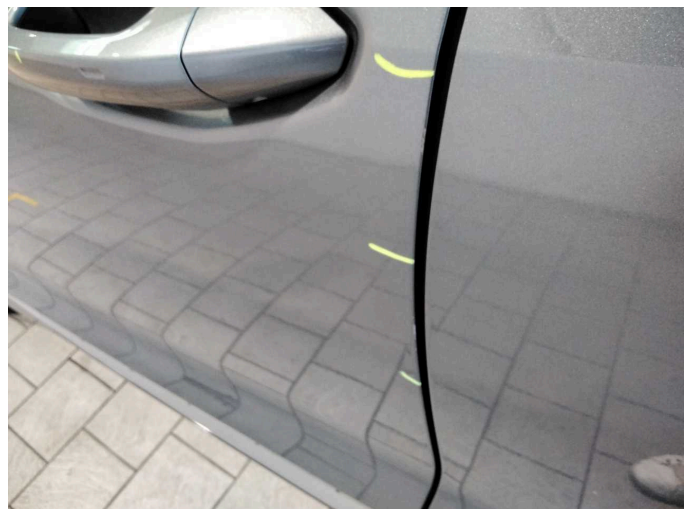
Damage 5: Door - front right side: Door edge - Scratch(es) - Smart repair



Damage 5: Door - front right side: Door edge - Scratch(es) - Smart repair



Damage 6: Door - front left side: Door edge - Scratch(es) - Smart repair



Damage 6: Door - front left side: Door edge - Scratch(es) - Smart repair



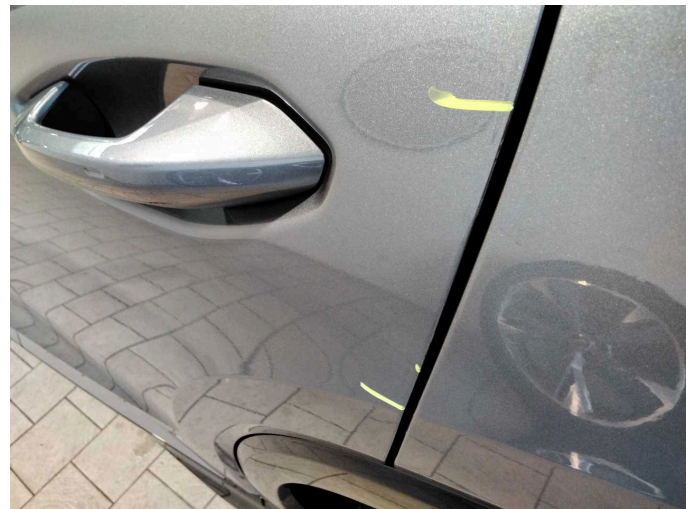
Damage 7: Door - rear right side: Door edge - Scratch(es) - Smart repair



Damage 7: Door - rear right side: Door edge - Scratch(es) - Smart repair



Damage 8: Door - rear left side: Door edge - Scratch(es) - Smart repair



Damage 8: Door - rear left side: Door edge - Scratch(es) - Smart repair



Damage 9: Boot lid / rear door: Boot lid (Spoiler) - Scratch(es) - Paint



Damage 9: Boot lid / rear door: Boot lid (Spoiler) - Scratch(es) - Paint



Wear and tear 1: Vehicle glazing: Windscreen - Stone chips - No deduction



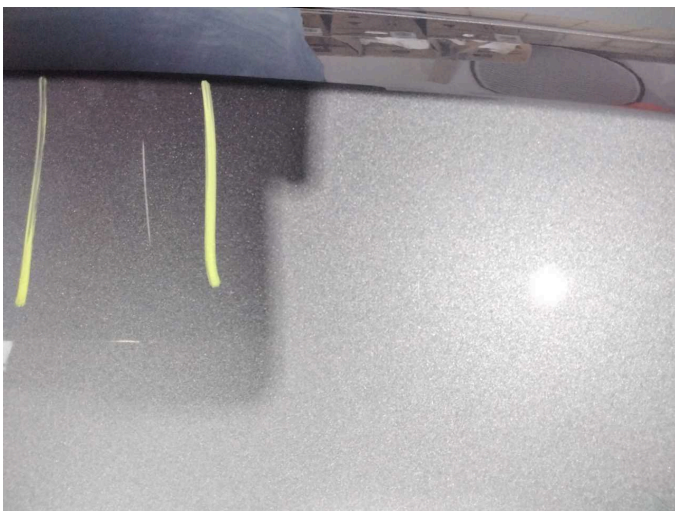
Wear and tear 2: Front bumper: Front bumper - Stone chips - No deduction



Wear and tear 3: Bonnet: Bonnet - Scratch(es) - Paint



Wear and tear 3: Bonnet: Bonnet - Scratch(es) - Paint



Wear and tear 3: Bonnet: Bonnet - Scratch(es) - Paint



Missing part 1: Equipment: Tirefit complete - Missing - Replace



Wartungshistorie

(gemäß Auftraggeber Informationen)

Fahrgestellnummer: WAUZZZFZ8PP038873
Hersteller / Modell: AUDI AUDI Q4 e-tron 40

Datum	KM-Stand	Beschreibung
08.05.2025	48.764	Bremsbelagfühler ern; Bremse Sonstiges; Bremsflüssigkeit; Bremsflüssigkeit ern; Bremsklötze vorne; Bremsscheiben + Klötze v; Bremsscheiben vorne; Regelwartungsdienst