

Expertise

Protocol number: 45095308
Order No. / Reference: 26268175
Inspection date: 20 Apr 2026

Manufacturer: Volvo

Model: XC60 B4 D Plus Dark

VIN: YV1UZZK5V2P1282812



Vehicle details

Manufacturer / Type / Model / Equipment

Volvo XC60 B4 D Plus Dark

Vehicle Identification number YV1UZZK5V2P1282812

Mileage (Read) 162,512 km

First registration 13 Jan 2023

Number of holders 1

Next periodical technical inspection 01/2028
(Report on hand)

Power / Engine displacement 145 kw / 1,969 ccm

Fuel type / Cylinder Hybrid Diesel / E / 4

Gearbox / Number of gears Automatic / 8

Type of drive Front drive

Type of vehicle SUV

Colour / colour code Crystal Weiß-Perleffekt

Doors / Seats 5 / 5

Upholstery type Leather

Colour of upholstery Anthracite



Vehicle details

Maintenance booklet / proof	digital proof / complete	Next maintenance in	205 Tag(e)
Last service on / at	11/2025 at 149,083 km		
Key is / should be	2 / 2	FZG documents	ZB#2 (B) was available (copy), ZB#1 (S) was not available.
		Letter No.	GQ204433
Previous damage / Accident	Detectable	Repainting	Detectable
Inspection conditions	sufficient	Lifting equipment / pit	yes
Test drive	Not performed	Engine function test	Performed
Manufacturer key number/ type code number	9101 / BTJ 00013		
Emission standard	EURO6;WLTP;AP;PI/CI; M, N1 I	fine dust sticker	
Permitted total weight	2,460 kg	Empty weight	

Tyres

Mounted tyres

#	Tyre size	Type of tyre	Manufacturer	Tread depth
1)	235/55 R19 105V	Winter tyres on Light alloy	Michelin	5mm / 5mm
2)	235/55 R19 105V	Winter tyres on Light alloy	Michelin	6mm / 6mm

Additional tyres

#	Tyre size	Type of tyre	Manufacturer	Tread depth
1)	255/40 R21 102V	Summer tyres on Light alloy	Pirelli	4mm / 4mm
2)	255/40 R21 102V	Summer tyres on Light alloy	Pirelli	6mm / 6mm

Replacement

Typ	Tyre size	Type of tyre	Manufacturer	Tread depth
Tirefit		Expiration date 11/2026		

Legend: Tread depth information for the left tire is listed first, for the right tire it is listed second on the axle in the direction of travel.



Equipment

Standard equipment

- ABS - Anti-lock Braking System
- Passenger side airbag can be deactivated
- Airbag, driver's knee airbag
- Active safety belts with belt tensioners
- Ambient lighting
- Electrically folding exterior mirrors
- Heated exterior mirrors and rear window (automatic)
- Hill Descent Control (HDC)
- Fog sensor for automatic activation of the defroster function
- On-board computer
- Roof edge spoiler
- Diesel particulate filter
- Digital Instrumentation 2nd Gen.
- Electronic Stability Control (ESC)
- Enhanced air quality system with fine dust filtration according to air quality standard PM2.5
- Automatic emergency braking
- Transmission: 8-speed automatic transmission
- Automatic tailgate
- Interior lighting
- ISOFIX mounting for the outer rear seats
- Keyless Start
- Automatic climate control with separate temperature control for driver and front passenger
- Cargo area roller blind
- Steering wheel adjustable for height and reach
- Steering wheel: Multifunction buttons on the steering wheel
- Front center armrest with integrated storage compartment and cup holders
- Package: Winter Package
- Parking ticket holder
- Radio accessories: Digital radio reception (DAB+)
- Rain sensor
- Tire pressure monitoring system
- Wheels: Tire sealant
- Safety Assistance
- Whiplash protection system WHIPS
- Safety braking system with disc brakes all around (internally ventilated)
- Sport front grille with horizontal struts and grille surround in high-gloss black
- Phone: Inductive smartphone charging system
- First aid kit and warning triangle
- Preparation for Trailer Stability Assist (TSA)
- Immobiliser
- Central locking system with two remote controls and integrated emergency keys
- Driver and passenger side airbags with two-stage deployment system
- Airbag, side airbags for driver and front passenger and head/shoulder airbags for all occupants
- Android infotainment system
- Electrically adjustable exterior mirrors
- Outdoor temperature display
- Hill Start Assist (HSA)
- LED turn signals integrated into the exterior mirrors
- third brake light
- Roof rails in high-gloss black (integrated)
- Digital services including Google Maps navigation system
- Aluminum door sill plates with Volvo lettering at the front
- Electronic differential lock
- Electric windows front and rear
- Window frame in high-gloss black
- Luggage compartment partition net
- Front seat belt height adjustment
- Interior and exterior mirrors automatically dimming
- Intelligent driver information system
- Keyless Drive (electronic access system)
- Child safety lock for the rear doors (electric)
- Headrests (5) front and rear
- Headrests of the 2nd row of seats can be folded down (electrically)
- Steering wheel: Three-spoke steering wheel, leather-free
- Illuminated makeup mirror for driver and front passenger
- Emergency brake lights
- Package: Seat Comfort Package
- Electric parking brake
- Radio: High Performance Sound audio system
- Radio accessories: Two USB-C ports on the back of the center console
- Run-off Road Protection
- Rear seats in a 40/60 split or completely foldable with pass-through function
- Speed-sensitive power steering
- Sport exterior mirrors in high-gloss black
- Sport front and rear apron
- Start/Stop technology
- Power socket
- Textile floor mats: Sport textile floor mats front and rear
- Lashing eyes in the luggage compartment (foldable)
- Warning tone/indicator when seat belts are not fastened (for all seats)



Extra equipment

- Towbar (semi-electric)
- Paint finish: Crystal White Pearl Effect
- Package: Lighting Package (LED fog lights (integrated into the front spoiler) - headlight cleaning system - full LED headlights "Thor's Hammer" Active High Beam with extended high beam, dynamic cornering lights, intelligent high beam assist with adaptive headlight range control and integrated LED daytime running lights)
- Panoramic glass sliding sunroof with lifting function (electric) (with integrated, continuously adjustable sunshade)
- Parking camera with 360° surround view (including front, side and rear parking aid with automatic braking intervention (rear))
- Wheels: 21" 5-twin-spoke sport design alloy wheels, diamond cut/high-gloss black (tires 255/40 R21 with rims 8.5 x 21")
- Glazing: Side and rear windows tinted (from the B-pillar back)
- Windscreen, heater
- Package: Driver Assistance Package (Driver Assistance: - Adaptive Cruise Control - Emergency Stop Assist - Automatic emergency braking system if warnings are ignored - Pilot Assist - Lane Keeping Assist up to speeds of 130 km/h Driver Awareness: - Blind Spot Information System - Blind Spot Assist including Lane Change Warning for rapidly approaching vehicles including steering intervention - Cross Traffic Alert - Cross-traffic alert with braking intervention - Rear Impact Mitigation - Preventive protection in case of an impending rear-end collision)
- Upholstery: Nappa leather/imitation leather comfort seats (perforated front seats) Anthracite (with active ventilation and electrically adjustable side bolsters for driver and front passenger seats - incl. rear center armrest - gearshift lever made of Swedish crystal glass by Orrefors - inlay: Linear Lime - headliner: Light Beige)

Brief expert findings

Documents submitted	At the time of the inspection, the vehicle registration certificate Part 2 (title) was available, but the vehicle registration certificate Part 1 (document) was not. (Copy)
VIN comparison	The vehicle identification number (VIN) was read from the vehicle and its conformity with the submitted documents was confirmed by the undersigned during the inspection.
Inspection	The inspection conditions were sufficient for the assessment of the vehicle. Lifting equipment and/or a pit were available for examining the vehicle.
Test drive	No test drive/shunting maneuver was carried out during the inspection of the vehicle.
Engine function test	An engine test run was performed.

Value reducing factors

No.	Component group	Description
1	Trim / covers	Trim / covers (Motorraum) - Damage caused by marten / rodent - Replace
2	Boot lid / rear door	Seal - Broken / torn - Replace
3	Engine	Engine cover - Damage caused by marten / rodent - Replace
4	Bonnet	Insulation lining - Damage caused by marten / rodent - Replace
5	2nd wheel set	1 tyre (Luft leer) - Damaged - Replace
6	2nd wheel set	2 alloy rims - Scratch(es) - Loss in value

Wear and tear

No.	Component group	Description
1	Trim / covers	Boot lid - interior trim - Scratched - No deduction
2	Body	Body - Scratched - No deduction
3	Front bumper	Front bumper - Stone chips - No deduction
4	Engine	Engine cowling - lower - Scratched - No deduction
5	Rear bumper	Rear bumper - Scratch(es) - No deduction
6	Trim / covers	Boot lining - Scratched - No deduction

The vehicle shows signs of wear and tear commensurate with its age and use.



Previous damages

No.	Previous damage	Extent of damage (Net)
1	Front, Side - left, Professionally repaired, Invoice of repair done Non-existent, from 20 Jun 2024	7.161,03 €

Repainting

No.	Repainting
1	Mudguard - left side, Professionally carried out, Invoice of repair done Non-existent

Paint coat thickness measurement

Mudguard - left side	186 µm
----------------------	--------

Order/Scope of Order

An order was placed to prepare a sales report for the described vehicle. This report includes the following:

- Description of key vehicle information
- Documentation of equipment features
(Delivery by third-party service providers)
- Documentation of damage, defects, missing parts
- Documentation of prior damage, unrepaired prior damage, repainting
- A brief visual or functional inspection of the equipment details, if possible.
(Functional testing of driver assistance systems is not included in the scope of services!)
- a photographic documentation of the vehicle

Basis for the order

This product is based on the guidelines for vehicle returns and valuations published by Alphabet Fleet GmbH. The expert makes the specific findings in each individual case objectively, within the framework of the prescribed standards, based on their own expertise.

The vehicle inspection takes place in a fully assembled, unassembled state.

Damage or defects that can only be detected during disassembly/diagnostic work or through further investigation remain within the realm of prognostic risk. An increased risk exists due to concealed defects caused by fraudulent misrepresentation and which were not identifiable by the expert.

Damage or defects resulting from normal use or wear and tear of the vehicle will be accepted in accordance with the applicable standard.

There was no explicit identification or monetary consideration of the expected features within the product.

Features which, in their nature and extent, slightly exceed normal use but do not constitute unacceptable damage, will be documented and indicated as signs of wear, if applicable.

Damage or defects that, according to the applicable standard, can no longer be attributed to normal use or wear and tear are listed under "Value Reducing Factors" in the product description.

Depending on the product specification, a monetary ID can be provided. If this takes place, the costs can be 100% d or pro rata depending on the vehicle's age and mileage.

Previous damages

Professionally repaired previous damages were found at the vehicle.

Comments

Die Montierten Winterräder sind kein Teil der Ausstattung.



Figure 1: Diagonal front (left)



Figure 2: Diagonal front (right)



Figure 3: Diagonal rear (left)



Figure 4: Diagonal rear (right)

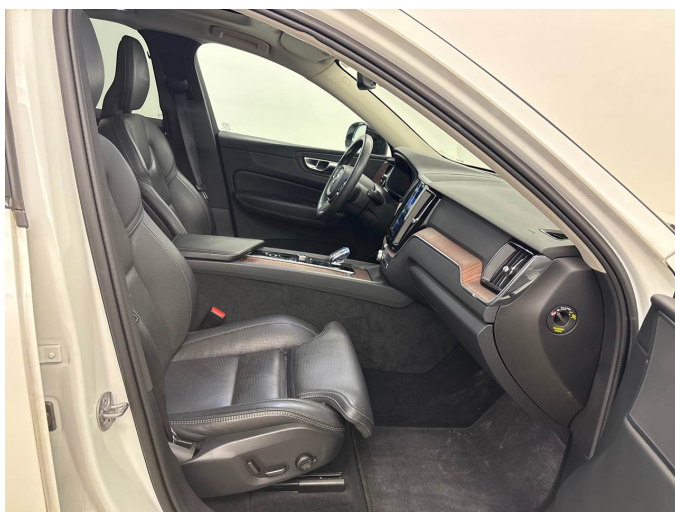


Figure 5: Interior - front



Figure 6: Interior - rear



Figure 7: Instrument cluster



Figure 8: Instrument panel



Figure 9: Interior 360° view



Figure 10: Cargo area

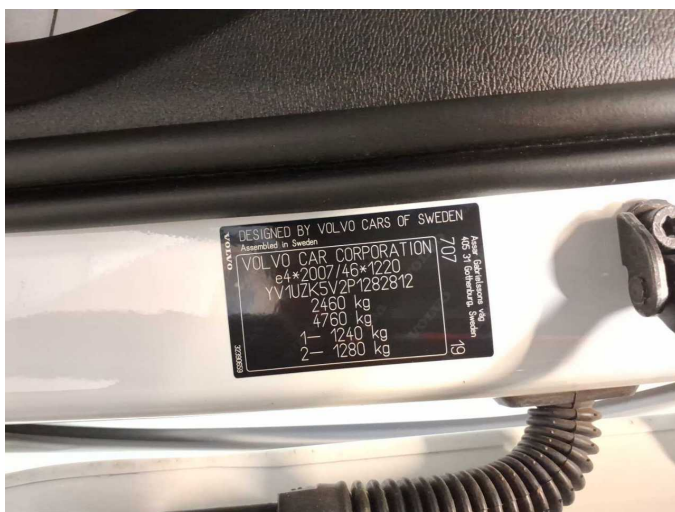


Figure 11: VIN



Figure 12: Mounted tyres

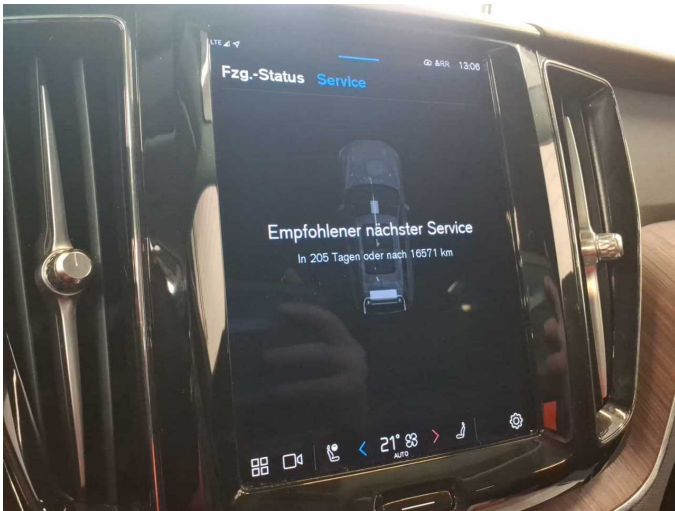


Figure 13: Documents



Figure 14: Documents



Figure 15: Documents

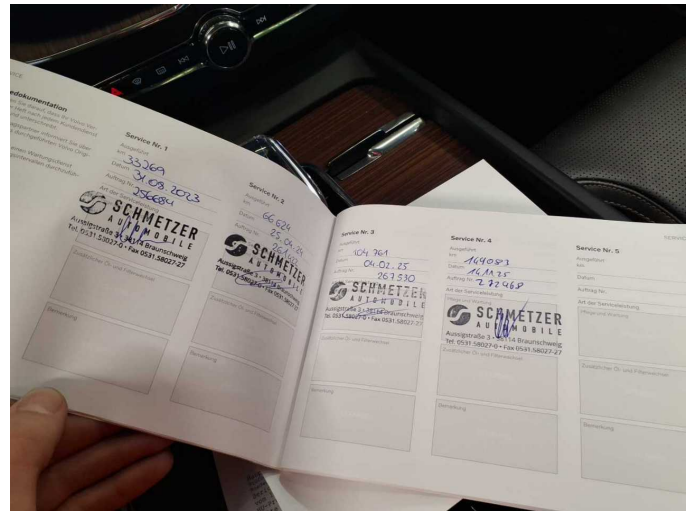


Figure 16: Documents



Figure 17: Documents



Figure 18: Additional tyres



Figure 19: Navigation



Figure 20: Misc.



Figure 21: Misc.



Figure 22: Misc.



Figure 23: Misc.

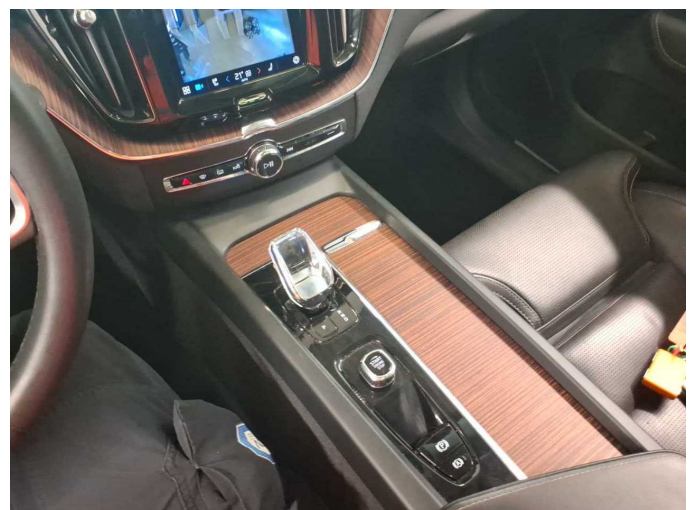


Figure 24: Misc.



Figure 25: Misc.



Figure 26: Misc.



Figure 27: Misc.



Figure 28: Misc.



Figure 29: Misc.

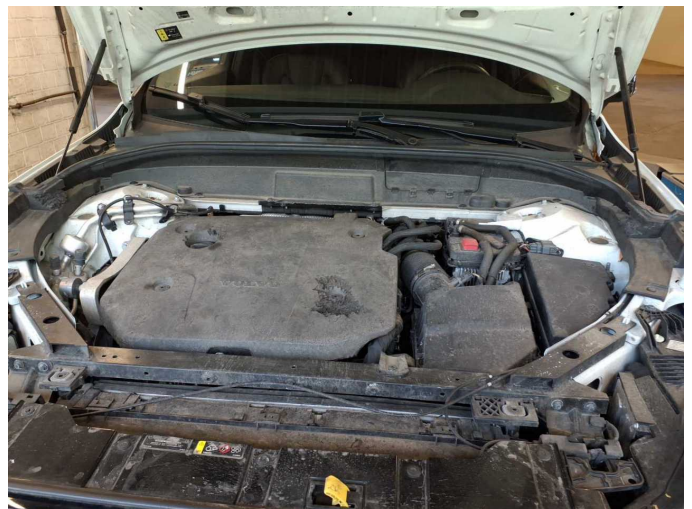


Figure 30: Misc.



Figure 31: Misc.



Figure 32: Misc.



Figure 33: Misc.



Figure 34: Misc.



Figure 35: Misc.



Figure 36: Misc.



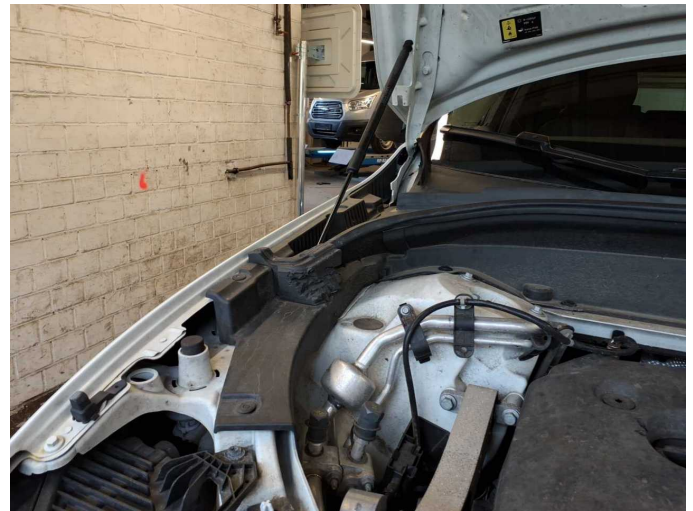
Figure 37: Misc.



Figure 38: Misc.



Figure 39: Misc.



Damage 1: Trim / covers: Trim / covers (Motorraum) - Damage caused by marten / rodent - Replace



Damage 1: Trim / covers: Trim / covers (Motorraum) - Damage caused by marten / rodent - Replace



Damage 1: Trim / covers: Trim / covers (Motorraum) - Damage caused by marten / rodent - Replace



Damage 2: Boot lid / rear door: Seal - Broken / torn - Replace



Damage 2: Boot lid / rear door: Seal - Broken / torn - Replace



Damage 3: Engine: Engine cover - Damage caused by marten / rodent - Replace



Damage 3: Engine: Engine cover - Damage caused by marten / rodent - Replace



Damage 3: Engine: Engine cover - Damage caused by marten / rodent - Replace



Damage 4: Bonnet: Insulation lining - Damage caused by marten / rodent - Replace



Damage 4: Bonnet: Insulation lining - Damage caused by marten / rodent - Replace



Damage 5: 2nd wheel set: 1 tyre (Luft leer) - Damaged - Replace



Damage 5: 2nd wheel set: 1 tyre (Luft leer) - Damaged - Replace



Damage 6: 2nd wheel set: 2 alloy rims - Scratch(es) - Loss in value



Damage 6: 2nd wheel set: 2 alloy rims - Scratch(es) - Loss in value



Damage 6: 2nd wheel set: 2 alloy rims - Scratch(es) - Loss in value



Damage 6: 2nd wheel set: 2 alloy rims - Scratch(es) - Loss in value



Repainting 1: Mudguard - left side



Wartungshistorie

(gemäß Auftraggeber Informationen)

Fahrgestellnummer: YV1UZK5V2P1282812
Hersteller / Modell: VOLVO VOLVO XC60 B4 D Plus Dark

Datum	KM-Stand	Beschreibung
15.01.2026	157.341	HU + AU; Reparatur Sonstiges; Systemtest/Eigendiagnose
14.11.2025	149.083	Bremsklötze vorne; Bremsscheiben + Klötze v; Bremsscheiben vorne; Keilrippenriemen; Kraftstofffilter ern; Luftfiltereinsatz ern; Motoröl b. Wartung; Ölfilter ern; Regelwartungsdienst; Reparatur Sonstiges; Wartung Sonstiges
27.02.2025	107.683	Reparatur Sonstiges; Wartung Sonstiges
04.02.2025	104.766	Bremsflüssigkeit; Bremsflüssigkeit ern; Bremsklötze hinten; Motoröl b. Wartung; Ölfilter ern; Regelwartungsdienst; Wartung Sonstiges
25.04.2024	66.628	Kraftstofffilter ern; Luftfiltereinsatz ern; Motoröl b. Wartung; Ölfilter ern; Regelwartungsdienst; Reparatur Sonstiges; Wartung Sonstiges
31.08.2023	33.269	Motoröl b. Wartung; Ölfilter ern; Regelwartungsdienst; Wartung Sonstiges