

## Expertise

Protocol number: 46197094  
Order No. / Reference: 26517826  
Inspection date: 29 Jun 2026

Manufacturer: Mercedes-Benz

Model: CLA 200 d Shooting Brake 8G-DCT Progressive Line Advanced

VIN: W1K5M1CB8RN446237



### Vehicle details

#### Manufacturer / Type / Model / Equipment

Mercedes-Benz CLA 200 d Shooting Brake 8G-DCT Progressive Line Advanced

<b>Vehicle Identification number</b>	W1K5M1CB8RN446237
<b>Mileage (Read)</b>	189,253 km
<b>First registration</b>	4 Oct 2023
<b>Number of holders</b>	2

<b>Power / Engine displacement</b>	110 kw / 1,950 ccm
------------------------------------	--------------------

<b>Fuel type / Cylinder</b>	Diesel / 4
-----------------------------	------------

<b>Gearbox / Number of gears</b>	Automatic / 8
----------------------------------	---------------

<b>Type of drive</b>	Front drive
----------------------	-------------

<b>Type of vehicle</b>	Station wagon
------------------------	---------------

<b>Colour / colour code</b>	NACHTSCHWARZ UNILACK
-----------------------------	-------------------------

<b>Doors / Seats</b>	5 / 5
----------------------	-------

<b>Upholstery type</b>	Cloth / leather combination
------------------------	--------------------------------

<b>Colour of upholstery</b>	Grey-Black
-----------------------------	------------

<b>Vehicle with smoke odor</b>	Yes (not ozone-treated)
--------------------------------	-------------------------



Vehicle details			
<b>Maintenance booklet / proof</b>	digital proof / complete	<b>Next maintenance in</b>	243 Tag(e)
<b>Last service on / at</b>	02/2026 at 173,247 km		
<b>Key is / should be</b>	2 / 2	<b>FZG documents</b>	ZB#2 (B) was available (copy), ZB#1 (S) was not available.
		<b>Letter No.</b>	GY506822
<b>Previous damage / Accident</b>	None detectable	<b>Repainting</b>	None detectable
<b>Inspection conditions</b>	sufficient	<b>Lifting equipment / pit</b>	yes
<b>Test drive</b>	Not performed	<b>Engine function test</b>	Performed
<b>Manufacturer key number/ type code number</b>	2222 / AGV 00088		
<b>Emission standard</b>	EURO6;WLTP;AP;PI/CI; M, N1 I	<b>fine dust sticker</b>	
<b>Permitted total weight</b>	2,140 kg	<b>Empty weight</b>	

## Tyres

Mounted tyres				
#	Tyre size	Type of tyre	Manufacturer	Tread depth
1)	205/55 R17 91H	Winter tyres on Light alloy	Continental	6mm / 6mm
2)	205/55 R17 91H	Winter tyres on Light alloy	Continental	7mm / 7mm
Additional tyres				
#	Tyre size	Type of tyre	Manufacturer	Tread depth
1)	225/45 R18 91W	Summer tyres on Light alloy	Pirelli	5mm / 5mm
2)	225/45 R18 91W	Summer tyres on Light alloy	Pirelli	6mm / 6mm
Replacement				
Typ	Tyre size	Type of tyre	Manufacturer	Tread depth
	Tirefit	Expiration date 11/2028		

**Legend: Tread depth information for the left tire is listed first, for the right tire it is listed second on the axle in the direction of travel.**

TÜV SÜD Auto Partner GmbH  
Wiesenring 2  
04159 Leipzig

Inspection location  
ARS Altmann AG Automobillogistik  
Römerstraße 3  
64560 Riedstadt



## Equipment



## Standard equipment

- Storage compartment in center console with roller blind (integrated 12V and USB interfaces)
- Adaptive Highbeam Assist (automatic switching of the high beams on and off - camera on the inside of the windshield - detects oncoming and preceding illuminated vehicles - activated by pressing the steering wheel control lever to the high beam position)
- Airbag: Windowbag for driver and front passenger
- Traction control (ASR)
- Exterior mirrors, left and right, heated and electrically adjustable, painted in car color (with aspherical curved mirror glass and integrated LED turn signal)
- Brake assist, active
- Diesel particulate filter
- Double cup holder at the front
- Third brake light in LED technology
- EASY-PACK tailgate (electrically opening and closing tailgate - switch for electrically opening the tailgate in the driver's door - switch for electrically closing the tailgate at the bottom edge of the tailgate - manual cargo cover to cover the cargo area)
- ECO start/stop function (Automatic engine shutdown when stationary, for example in traffic jams or at traffic lights, reduces fuel consumption, lowers emissions and saves fuel costs. The ECO start/stop function works particularly effectively, quickly and quietly.)
- Electric windows (4-way)
- Luggage net on driver and passenger seatbacks
- Transmission: 8G-DCT automatic
- Black fabric headliner
- THERMATIC automatic climate control (1-zone air conditioning, automatically controlled air distribution, recirculation function, tunnel mode in conjunction with navigation system, fine dust filter)
- Rear headrests (3)
- Front headrests are height-adjustable
- Paint finish: Solid
- Steering wheel: Multifunction sports steering wheel in leather (sporty steering wheel in 3-spoke design - leather finish - steering wheel shift paddles, black grained - control via touch control panel)
- Steering: Direct steering (with variable steering ratio)
- Mercedes-Benz Emergency Call System (can provide a crucial time advantage in an emergency. A communication module with its own SIM card automatically triggers an emergency call upon detection of an accident, which can shorten the time until emergency services arrive. The emergency call can also be triggered manually to organize assistance.)
- Package: Light and Sight Package (roof control unit with 4 light elements - interior light and reading light in the rear in mounting plate, left and right - reading lights in front, left and right as well as console lighting - sun visor with illuminated make-up mirror - signal exit light in front, left and right - footwell lighting in front, left and right - cupholder and storage compartment lighting - spontaneous storage compartment lighting)
- ADAPTIVE BRAKE with HOLD function, hill start assist, pre-filling and drying brakes in wet conditions
- Airbag for driver and front passenger
- Airbag: Automatic passenger airbag deactivation
- Airbag: Kneebag for driver
- Airbag: Sidebag for driver and front passenger (combined thorax/pelvisbag)
- Anti-lock braking system (ABS)
- ATTENTION ASSIST (the attention assistant) (can detect typical signs of fatigue through driver behavior and warn the driver of increasing fatigue or inattentiveness)
- Basic services (breakdown management, maintenance management, accident management, telediagnosis, remote vehicle diagnostics)
- Tachometer
- DYNAMIC SELECT (DYNAMIC SELECT button in the center console for selecting four different driving programs: Eco, Comfort, Sport and Individual - the driving programs affect the engine, transmission, steering, ECO start/stop function, climate control, and, depending on the equipment/model, the chassis (with adjustable damping))
- Door sills with "Mercedes-Benz" lettering
- Electronic Stability Program (ESP) (with Curve Dynamic Assist)
- Chassis: Comfort chassis with lowering (chassis level lowered by 15 mm)
- Velour floor mats in black
- Speed Limit Assist (Uses image recognition via camera to determine the maximum permissible speed - Traffic signs are displayed symbolically in the instrument cluster and optionally in the head-up display, including limiting signs such as speed limits in wet conditions - The driver can manually accept recognized and suggested speed limits via the steering wheel controls - Adjustable visual and audible warning when exceeding the maximum permissible speed)
- LED High Performance headlights (low beam with LED projection technology - high beam with LED reflection technology - daytime running lights, position lights and direction indicators in LED technology - adaptive full-LED taillights with automatic adjustment of light intensity to the surroundings)
- Navigation accessories: Pre-installation for Live Traffic Information
- Navigation: MBUX Navigation Premium (hard drive navigation - high-resolution navigation with satellite view - live traffic information and Car-to-X communication - fast online route calculation - trailer route planner - shared navigation - Send2Car function sends selected addresses via app - map data updates: - navigation services, local search, online search, display of detailed map view with weather information)



- Package: Progressive Line Advanced (00U Remote Services - 677 Comfort suspension with lowered ride height - 873 Heated seats for driver and front passenger - B51 TIREFIT - P59 Progressive - PBG MBUX Navigation Premium - PDA Advanced Package: Parking package with reversing camera incl. Active Parking Assist with PARKTRONIC, Mirror package: Electrically folding exterior mirrors, automatically dimming interior mirror, 4-way lumbar support)
- Package: USB Package Plus (1 USB-C port in the storage compartment in the front of the center console, fast charging and suitable for data transfer - 2 USB-C ports under the front center armrest, fast charging and suitable for data transfer - 1 USB-C port for the rear of the center armrest, fast charging - 12-volt socket in the storage compartment in the front of the center console)
- Radio: Extended MBUX functions (personalization (profiles) and prediction functions - MBUX voice assistant with natural language understanding - activation via "Hey Mercedes" - learning function of the MBUX voice assistant by connecting to a cloud-based online dictionary - Wi-Fi hotspot - internet radio)
- Radio accessories: Central Media Display (The high-resolution media display connects you to the car in a large format (10.25"). It responds to your touch inputs. Symbols simplify operation and increase concentration. Aesthetically pleasing: When the media display combines with the enlarged instrument display, a widescreen cockpit is created.)
- Tire pressure monitoring system (TPMS)
- Remote Services (Communication module - Mercedes me services: -Programming of auxiliary heating/ventilation: -Remote door locking and unlocking -Sunroof/windows with remote locking and opening including ventilation function -Personalization -Vehicle location -Vehicle tracking -Geographic vehicle monitoring -Parking service monitoring -Find function (Remote Vehicle Finder))
- Windscreen wipers with rain sensor
- Seats: 4-way lumbar support for driver and front passenger
- Seats: i-Size child seat attachment in the rear (2 anchor points each on the outer rear seats between seat back and seat cushion - 2 top tether attachment points behind the outer rear seats)
- Seats: Rear seat backrests foldable, 40/20/40 split
- Heated seats for driver and front passenger
- Sporty engine sound
- Cruise control (display in the instrument cluster - cruise control buttons on the steering wheel - desired travel or maximum speed selectable in 1 km/h or 10 km/h increments)
- High-visibility vest for drivers
- Electronic immobilizer (including locking system with radio remote control in the electronic key in chrome look, optical locking feedback and emergency opening (approved by AZT and TÜV))
- Package: Parking package with reversing camera (12 ultrasonic sensors: six each in the front and rear bumpers - Active Parking Assist detects suitable parking spaces - Assisted parking - Reversing camera - PARKTRONIC visual and acoustic warning of detected obstacles - Side obstacles displayed in the media display - Cross traffic warning - Driving Assistance - Button for Active Parking Assist with PARKTRONIC on the center console)
- Package: Seating comfort (height adjustment of passenger seat, seat cushion tilt adjustment for driver and passenger seats, seat cushion depth adjustment for improved seating comfort through a 60 mm wider thigh support area, specific seat design)
- Package: Mirror package (electrically folding exterior mirrors via a button in the driver's door control panel - the menu allows you to set the exterior mirrors to fold in automatically when locking the vehicle and unfold again when unlocking - interior mirror automatically dimming, steplessly, depending on the incident glare and ambient light)
- Upholstery: ARTICO leatherette/Bertrix fabric
- Radio: MBUX multimedia system (instrument display with 17.78 cm (7") diagonal - media display with 17.78 cm (7") diagonal and touch function - touch control buttons on the steering wheel - radio (FM/AM) - USB interface in the center console under the armrest - Bluetooth telephony with contact transfer and audio streaming of music files - display of vehicle functions (driver assistance systems, driving programs and vehicle settings) - favorites storage - smartphone-related voice control)
- Radio accessories: Digital radio (DAB)
- Radio accessory: Communication module (LTE) for using Mercedes me connect services (The communication module with a vehicle-integrated, LTE-enabled SIM card offers you added comfort and safety. It continuously connects you to your vehicle – and the vehicle to infrastructure such as the Mercedes-Benz server or the internet. This allows you to use services such as Live Traffic Information\* from Mercedes me connect.)
- Wheels: 45.7 cm (18") light alloy wheels in 10-spoke design (aerodynamically optimized, painted black and polished with 225/45 R18 on 7.5J x 18 ET49)
- Seat belts CLA-Class (3-point seat belts including mechanical belt height adjustment - pyrotechnic belt force limiter and belt tensioner for driver and front passenger - pyrotechnic belt tensioner in the rear outer seats)
- Seats: Comfort seats (Its name lives up to its promise - the comfort seat offers you good long-distance comfort and comprehensive adjustments in length and height. You can also adjust the seat cushion angle and even extend it.)
- Lane Keeping Assist, active
- TIREFIT with tire inflation compressor
- Pre-installation for digital key handover (Share your vehicle key even without personal handover - Decide to whom you open the vehicle and hand over the key - Use the functions conveniently in the Mercedes me app)



- Central locking (with interior switch, automatic locking (can be deactivated) and crash sensor with emergency opening)
- Decorative elements in dark carbon look

### Extra equipment

- Interior headliner fabric crystal grey
- PRE-SAFE System
- Wheels: Winter complete wheels M+S 4-way 43.2 cm (17") (43.2 cm (17") light alloy wheels 5-twin-spoke design aerodynamically optimized, vanadium silver painted with 205/55 R17 on 6.5J x 17 ET44)
- Wheels: Complete winter wheel sets fitted at the factory
- Traffic Sign Assistant
- Package: Driving Assistance Package (Active Distance Assist DISTRONIC incl. Active Speed Limit Assist, Extended Automatic Restart on Highways, Route-Based Speed Adaptation with Traffic Jam Function, Active Steering Assist incl. Active Emergency Stop Assist with SOS Function, Emergency Lane Radio, Active Brake Assist incl. Turning and Intersection Radio, Traffic Jam Emergency Brake Radio, Evasive Steering Assist, Active Lane Keeping Assist, Active Blind Spot Assist incl. Exit Warning, Traffic Sign Assist: Pedestrian Warning Radio, PRE-SAFE PLUS)

### Brief expert findings

Documents submitted	At the time of the inspection, the vehicle registration certificate Part 2 (title) was available, but the vehicle registration certificate Part 1 (document) was not. (Copy)
VIN comparison	The vehicle identification number (VIN) was read from the vehicle and its conformity with the submitted documents was confirmed by the undersigned during the inspection.
Inspection	The inspection conditions were sufficient for the assessment of the vehicle. Lifting equipment and/or a pit were available for examining the vehicle.
Test drive	No test drive/shunting maneuver was carried out during the inspection of the vehicle.
Engine function test	An engine test run was performed.

### Value reducing factors

No.	Component group	Description
1	Boot lid / rear door	Boot lid - Glued / labelled - De-glug / neutralise
2	Rear bumper	Rear bumper - Scratch(es) - Smart repair
3	Sill - left side	Sill - dent(s) - Smart repair
4	Wing mirror - right side	Cap - Scratch(es) - Smart repair
5	Side panel - rear right side	Side panel - dent(s) - Smart repair
6	Interior	Interior (Raucherauto) - Odour - Ozone treatment
7	2nd wheel set	1 alloy rim - Scratched - Loss in value
8	Front bumper	Front bumper - Scratch(es) - Paint

### Wear and tear

No.	Component group	Description
1	Bonnet	Bonnet - Stone chips - No deduction
2	Vehicle glazing	Windscreen with lane departure assistant - Stone chips - No deduction

The vehicle shows signs of wear and tear commensurate with its age and use.



## Order/Scope of Order

An order was placed to prepare a sales report for the described vehicle. This report includes the following:

- Description of key vehicle information
- Documentation of equipment features  
*(Delivery by third-party service providers)*
- Documentation of damage, defects, missing parts
- Documentation of prior damage, unrepaired prior damage, repainting
- A brief visual or functional inspection of the equipment details, if possible.  
*(Functional testing of driver assistance systems is not included in the scope of services!)*
- a photographic documentation of the vehicle

## Basis for the order

This product is based on the guidelines for vehicle returns and valuations published by Alphabet Fleet GmbH. The expert makes the specific findings in each individual case objectively, within the framework of the prescribed standards, based on their own expertise.

The vehicle inspection takes place in a fully assembled, unassembled state.

Damage or defects that can only be detected during disassembly/diagnostic work or through further investigation remain within the realm of prognostic risk. An increased risk exists due to concealed defects caused by fraudulent misrepresentation and which were not identifiable by the expert.

Damage or defects resulting from normal use or wear and tear of the vehicle will be accepted in accordance with the applicable standard.

There was no explicit identification or monetary consideration of the expected features within the product.

Features which, in their nature and extent, slightly exceed normal use but do not constitute unacceptable damage, will be documented and indicated as signs of wear, if applicable.

Damage or defects that, according to the applicable standard, can no longer be attributed to normal use or wear and tear are listed under "Value Reducing Factors" in the product description.

Depending on the product specification, a monetary ID can be provided. If this takes place, the costs can be 100% or pro rata depending on the vehicle's age and mileage.

## Previous damages

No apparent prior damage that had been repaired could be found on the vehicle.

## Comments

Die Unterbodenbesichtigung war nur ebenerdig & eingeschränkt möglich. Mehrkosten möglich.



Figure 1: Diagonal front (left)



Figure 2: Diagonal front (right)



Figure 3: Diagonal rear (left)



Figure 4: Diagonal rear (right)



Figure 5: Interior - front



Figure 6: Interior - rear



Figure 7: Instrument cluster



Figure 8: Instrument panel



Figure 9: Interior 360° view

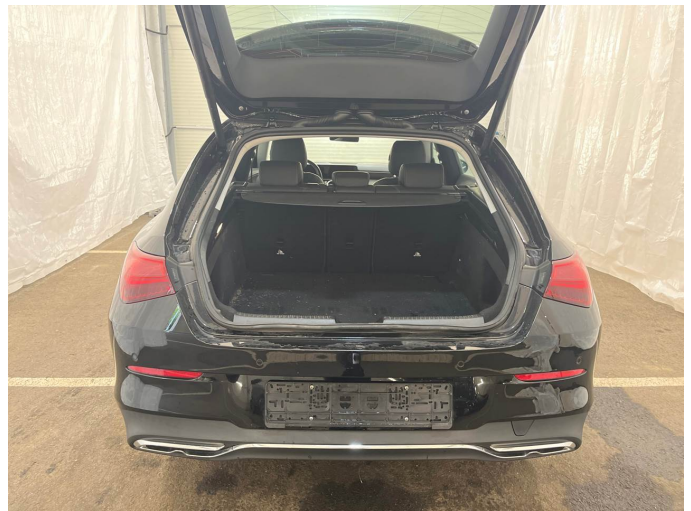


Figure 10: Cargo area



Figure 11: VIN



Figure 12: Mounted tyres



Figure 13: Documents



Figure 14: Documents



Figure 15: Additional tyres

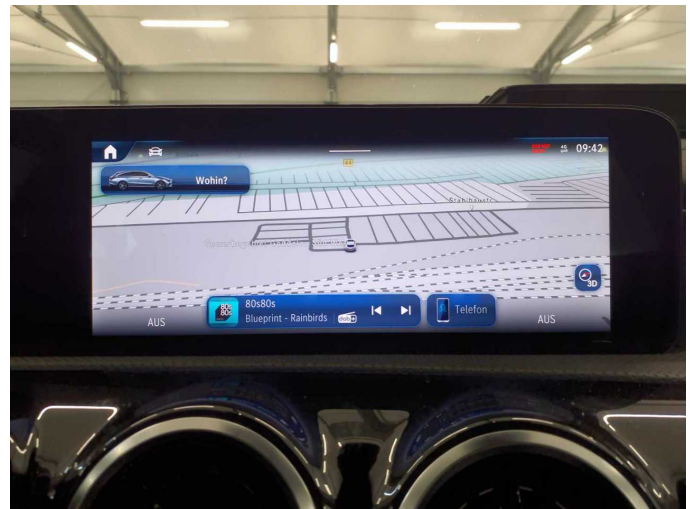


Figure 16: Navigation

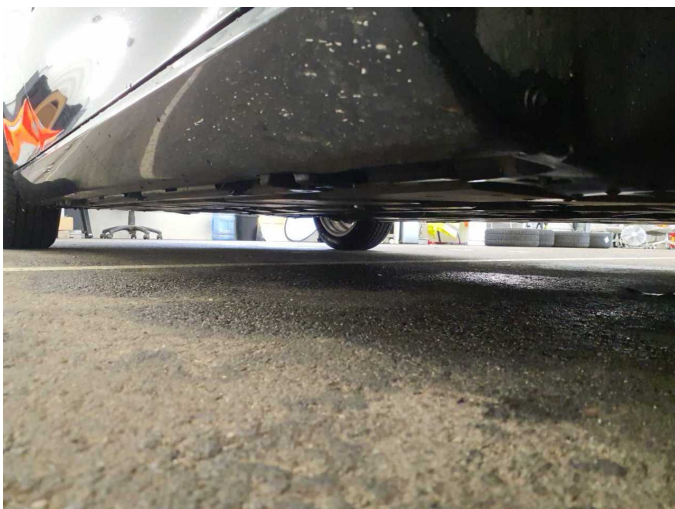


Figure 17: Misc.

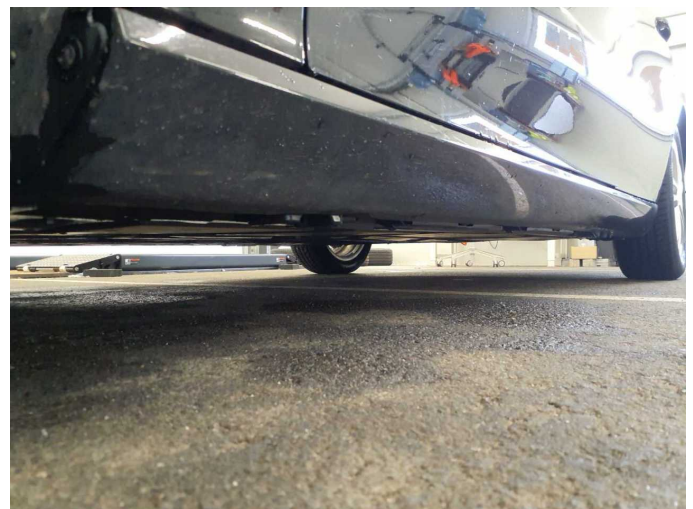


Figure 18: Misc.



Figure 19: Misc.



Figure 20: Misc.



Figure 21: Misc.



Figure 22: Misc.



Figure 23: Misc.



Figure 24: Misc.



Figure 25: Misc.



Figure 26: Misc.

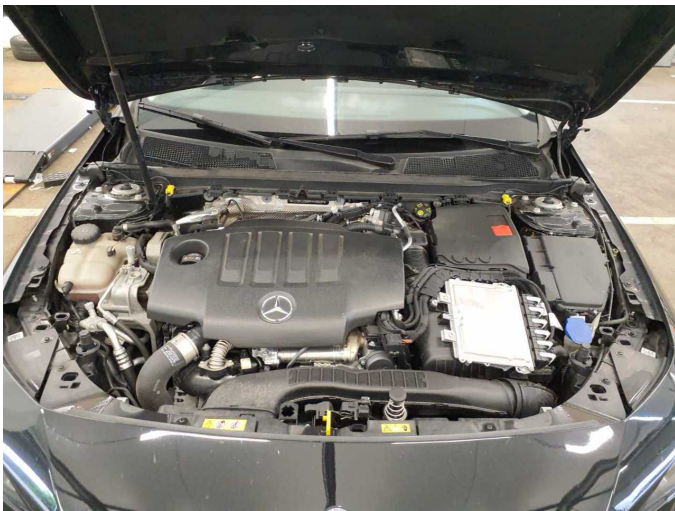


Figure 27: Misc.



Figure 28: Misc.



Figure 29: Misc.



Figure 30: Misc.



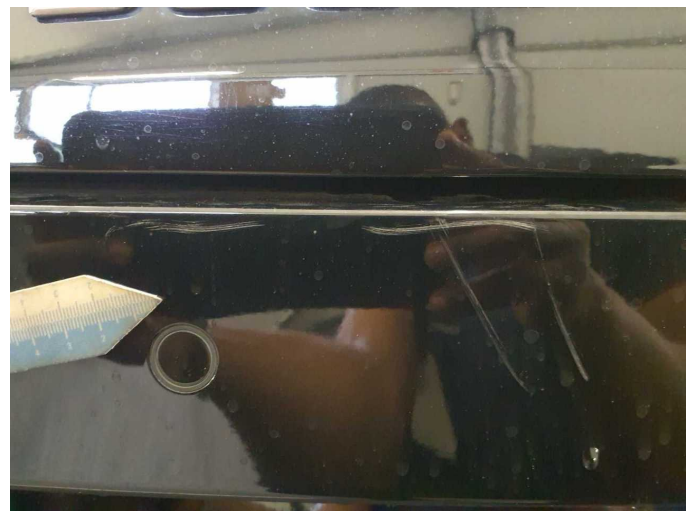
**Damage 1:** Boot lid / rear door: Boot lid - Glued / labelled - De-glue / neutralise



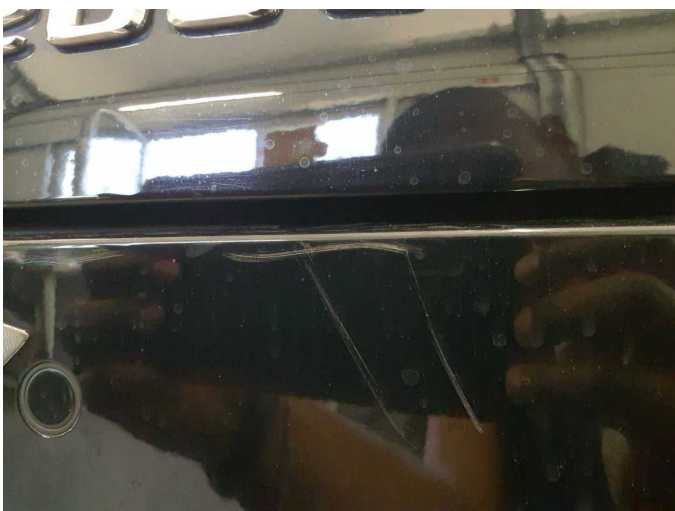
**Damage 1:** Boot lid / rear door: Boot lid - Glued / labelled - De-glue / neutralise



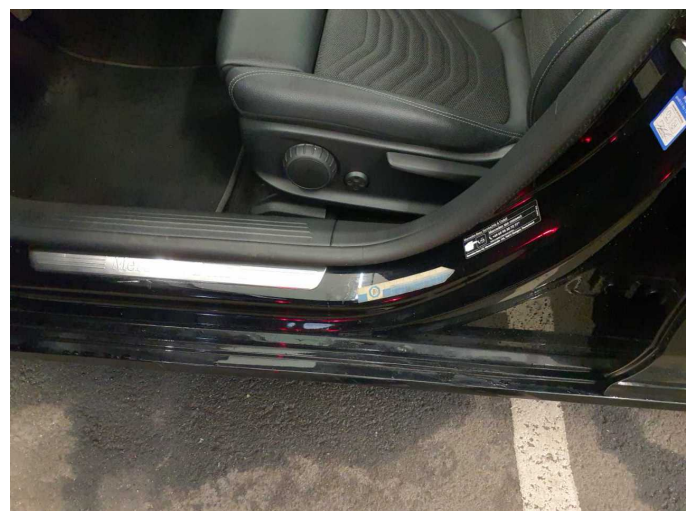
**Damage 2:** Rear bumper: Rear bumper - Scratch(es) - Smart repair



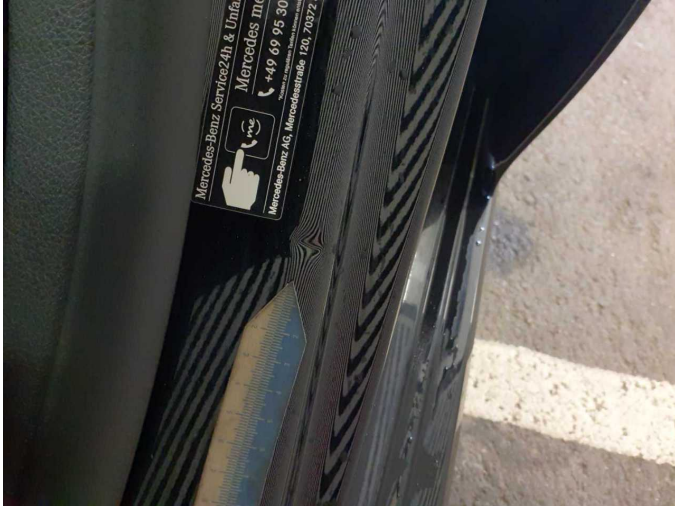
**Damage 2:** Rear bumper: Rear bumper - Scratch(es) - Smart repair



**Damage 2:** Rear bumper: Rear bumper - Scratch(es) - Smart repair



**Damage 3:** Sill - left side: Sill - dent(s) - Smart repair



**Damage 3:** Sill - left side: Sill - dent(s) - Smart repair



**Damage 4:** Wing mirror - right side: Cap - Scratch(es) - Smart repair



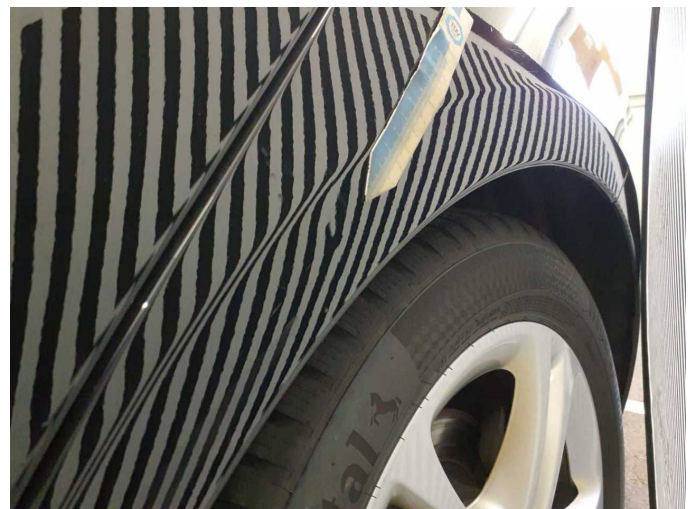
**Damage 4:** Wing mirror - right side: Cap - Scratch(es) - Smart repair



**Damage 5:** Side panel - rear right side: Side panel - dent(s) - Smart repair



**Damage 5:** Side panel - rear right side: Side panel - dent(s) - Smart repair



**Damage 5:** Side panel - rear right side: Side panel - dent(s) - Smart repair



**Damage 7:** 2nd wheel set: 1 alloy rim - Scratched - Loss in value



**Damage 7:** 2nd wheel set: 1 alloy rim - Scratched - Loss in value



**Damage 7:** 2nd wheel set: 1 alloy rim - Scratched - Loss in value



**Damage 8:** Front bumper: Front bumper - Scratch(es) - Paint



**Damage 8:** Front bumper: Front bumper - Scratch(es) - Paint



# Wartungshistorie

(gemäß Auftraggeber Informationen)

Fahrgestellnummer: W1K5M1CB8RN446237

Hersteller / Modell: MERCEDES-BENZ MERCEDES-BENZ CLA 200 d Shooting Brake  
8G-DCT Progressive Line Advanced

Datum	KM-Stand	Beschreibung
23.03.2026	176.679	Reparatur Sonstiges; Wasserpumpe ern
25.02.2026	173.247	Bremsinspektion vo + hi; Regelwartungsdienst
05.11.2025	147.665	Regelwartungsdienst
02.09.2025	135.944	Bremsscheiben hinten
28.05.2025	119.132	Regelwartungsdienst
04.12.2024	90.664	Bremsscheiben vorne; Regelwartungsdienst
12.09.2024	75.336	Bremsscheiben hinten
02.07.2024	56.707	Regelwartungsdienst
27.02.2024	27.729	Regelwartungsdienst