

Expertise

Protocol number: 45522208
Order No. / Reference: 26382962
Inspection date: 13 May 2026

Manufacturer: Opel

Model: Astra Sports Tourer 1.5 D Automatik Business Edition

VIN: VXKFCYHZTP1084460



Vehicle details

Manufacturer / Type / Model / Equipment

Opel Astra Sports Tourer 1.5 D Automatik Business Edition

Vehicle Identification number VXKFCYHZTP1084460

Mileage (Read) 119,278 km

First registration 24 Jan 2024

Number of holders 1

Power / Engine displacement 96 kw / 1,499 ccm

Fuel type / Cylinder Diesel / 4

Gearbox / Number of gears Automatic / 8

Type of drive Front drive

Type of vehicle Station wagon

Colour / colour code Karbon Schwarz Metallic

Doors / Seats 5 / 5

Upholstery type Cloth

Colour of upholstery Black-Anthracite



Vehicle details

Maintenance booklet / proof	digital proof / complete	Next maintenance in	10 Monat(e)
Last service on / at	03/2026 at 115,035 km		
Key is / should be	2 / 2	FZG documents	ZB#2 (B) was available (copy), ZB#1 (S) was not available.
		Letter No.	HB396022
Previous damage / Accident	Detectable	Repainting	Detectable
Inspection conditions	sufficient	Lifting equipment / pit	yes
Test drive	Not performed	Engine function test	Performed
Manufacturer key number/ type code number	1889 / AEY 00089		
Emission standard	EURO6;WLTP;AP;PI/CI; M, N1 I	fine dust sticker	
Permitted total weight	1,980 kg	Empty weight	

Tyres

Mounted tyres			
#	Tyre size	Type of tyre	Tread depth
1)	205/55 R16 91H	Winter tyres on Steel rim with wheel cover	3mm / 3mm
2)	205/55 R16 91H	Winter tyres on Steel rim with wheel cover	5mm / 5mm

Additional tyres			
#	Tyre size	Type of tyre	Tread depth
1)	205/55 R16 94V	Summer tyres on Light alloy	4mm / 4mm
2)	205/55 R16 94V	Summer tyres on Light alloy	5mm / 5mm

Replacement			
Typ	Tyre size	Type of tyre	Tread depth
	Tirefit	Expiration date 07/2028	

Legend: Tread depth information for the left tire is listed first, for the right tire it is listed second on the axle in the direction of travel.



Equipment

Standard equipment

- Storage compartments
- Airbag: Front airbags, driver and front passenger
- Airbag: Front and rear outer head airbags
- Automatic activation of the hazard warning lights
- Exterior mirror housings in black
- Hill Start Assist
- third brake light
- Diesel particulate filter (DPF) maintenance-free
- Electronic brake force distribution (EBD)
- Electric windows front and rear
- Transmission: 8-speed automatic transmission
- rear window wiper
- automatic climate control
- Paintwork: Roof in car color
- LED headlights
- Steering wheel heating
- Illuminated makeup mirrors in both sun visors
- Multimedia infotainment system
- Opel Vizor with frame in high-gloss black
- Tire repair kit
- Wheels: Alloy wheels 7 J x 16 (5 double spokes) in silver
- Rear seat backrest folds forward in a 40:20:40 split
- Seat belts: Three-point seat belts in all seats
- Heated seats, driver and passenger
- Start/Stop System
- Pre-wiring for ISOFIX child seat mounting system
- Central locking with remote control

Extra equipment

- Paint finish: Metallic

- Airbag: Chest-pelvis-side airbags, driver and front passenger
- Anti-lock braking system (ABS)
- Exterior mirrors, electrically adjustable, heated and manually foldable
- On-board computer
- Roof design line, in black
- Tachometer
- Electronic Stability Program (ESP) and Traction Control with engine and brake intervention (TCPlus)
- Back window, heater
- Wiring harness for trailer hitch
- Front headrests and 3 rear headrests, height adjustable
- LED interior lighting
- Steering wheel: Leather steering wheel, flattened, perforated, with steering wheel remote control and paddle shifters
- Fog light
- Electric parking brake
- Tire pressure monitoring system
- 180-degree reversing camera
- Keyless Start system
- Seats: Ergonomic active driver's seat, Modene fabric
- Solar Protect thermal insulation glazing
- 12V power outlet in the center console
- Electronic immobilizer

- Navigation system (Multimedia infotainment system with 10" color touchscreen display and 10" driver information display; navigation system with integrated memory; 3D map display for Europe and Russia; dynamic route guidance via map and/or arrow display and voice prompts; TomTom Online Traffic; online POI search and route guidance; parking information; fuel price information; live weather; over-the-air map updates; intelligent voice control; "Hey Opel" shortcut button; 6 functions; active route suggestions)

Brief expert findings

Documents submitted	At the time of the inspection, the vehicle registration certificate Part 2 (title) was available, but the vehicle registration certificate Part 1 (document) was not. (Copy)
VIN comparison	The vehicle identification number (VIN) was read from the vehicle and its conformity with the submitted documents was confirmed by the undersigned during the inspection.
Inspection	The inspection conditions were sufficient for the assessment of the vehicle. Lifting equipment and/or a pit were available for examining the vehicle.
Test drive	No test drive/shunting maneuver was carried out during the inspection of the vehicle.
Engine function test	An engine test run was performed.



Value reducing factors

No.	Component group	Description
1	Door - front left side	Door - Scratch(es) - Smart repair
2	Sill - right side	Sill - Scratch(es) - Smart repair
3	Door - rear right side	Door - Scratch(es) - Smart repair
4	Side panel - rear left side	Side panel - Scratch(es) - Paint
5	Rear bumper	Rear bumper - Scratch(es) - Paint
6	Front bumper	Front bumper (Sandstrahleffekt) - Stone chips - Paint

Wear and tear

No.	Component group	Description
1	Bonnet	Bonnet - Stone chips - No deduction
2	Vehicle glazing	Windscreen - Stone chips - No deduction
3	Wheel / tyres	Wheel cover - front right side (Kein Teil der Ausstattung) - Scratched - No deduction
4	Wheel / tyres	Tyre - front (Profiltiere <4mm Kein Teil der Ausstattung) - Does not meet the leasing specifications - No deduction

The vehicle shows signs of wear and tear commensurate with its age and use.

Previous damages

No.	Previous damage	Extent of damage (Net)
1	Roof, Front, Rear, Side - left, Side right, Professionally repaired, Invoice of repair done Non-existent, from 7 Jun 2024	8.223,00 €

Repainting

No.	Repainting
1	Roof, Door - front right side, Professionally carried out, Invoice of repair done Non-existent

Paint coat thickness measurement

Roof	318 µm	Door - front right side	361 µm
------	--------	-------------------------	--------

Order/Scope of Order

An order was placed to prepare a sales report for the described vehicle. This report includes the following:

- Description of key vehicle information
- Documentation of equipment features
(*Delivery by third-party service providers*)
- Documentation of damage, defects, missing parts
- Documentation of prior damage, unrepaired prior damage, repainting
- A brief visual or functional inspection of the equipment details, if possible.
(*Functional testing of driver assistance systems is not included in the scope of services!*)
- a photographic documentation of the vehicle



Basis for the order

This product is based on the guidelines for vehicle returns and valuations published by Alphabet Fleet GmbH. The expert makes the specific findings in each individual case objectively, within the framework of the prescribed standards, based on their own expertise.

The vehicle inspection takes place in a fully assembled, unassembled state.

Damage or defects that can only be detected during disassembly/diagnostic work or through further investigation remain within the realm of prognostic risk. An increased risk exists due to concealed defects caused by fraudulent misrepresentation and which were not identifiable by the expert.

Damage or defects resulting from normal use or wear and tear of the vehicle will be accepted in accordance with the applicable standard.

There was no explicit identification or monetary consideration of the expected features within the product.

Features which, in their nature and extent, slightly exceed normal use but do not constitute unacceptable damage, will be documented and indicated as signs of wear, if applicable.

Damage or defects that, according to the applicable standard, can no longer be attributed to normal use or wear and tear are listed under "Value Reducing Factors" in the product description.

Depending on the product specification, a monetary ID can be provided. If this takes place, the costs can be 100% d or pro rata depending on the vehicle's age and mileage.

Previous damages

Professionally repaired previous damages were found at the vehicle.

Comments

Der montierte Winterradsatz ist kein Bestandteil der Ausstattung.



Figure 1: Diagonal front (left)



Figure 2: Diagonal front (right)



Figure 3: Diagonal rear (left)



Figure 4: Diagonal rear (right)



Figure 5: Interior - front

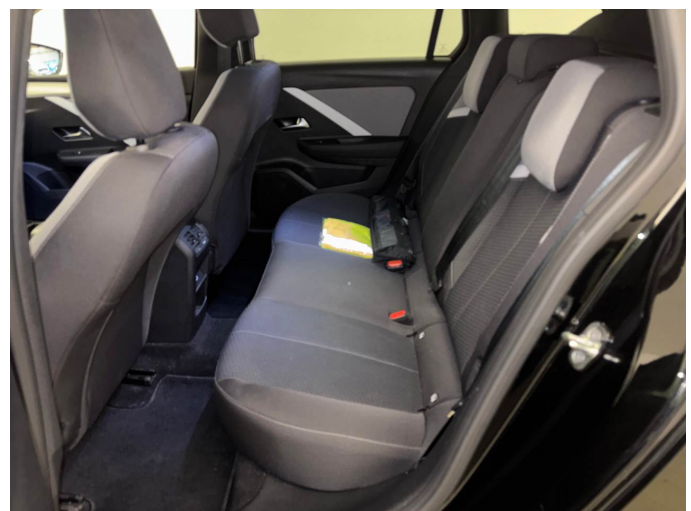


Figure 6: Interior - rear



Figure 7: Instrument cluster



Figure 8: Instrument panel



Figure 9: Interior 360° view



Figure 10: Cargo area



Figure 11: VIN



Figure 12: Mounted tyres

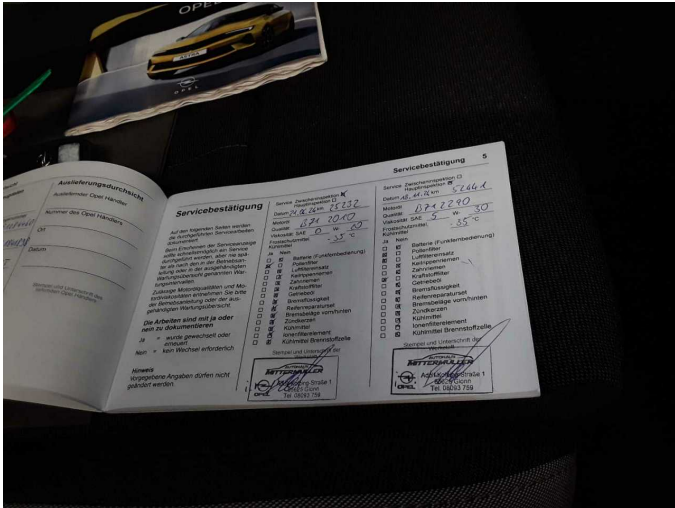


Figure 13: Documents

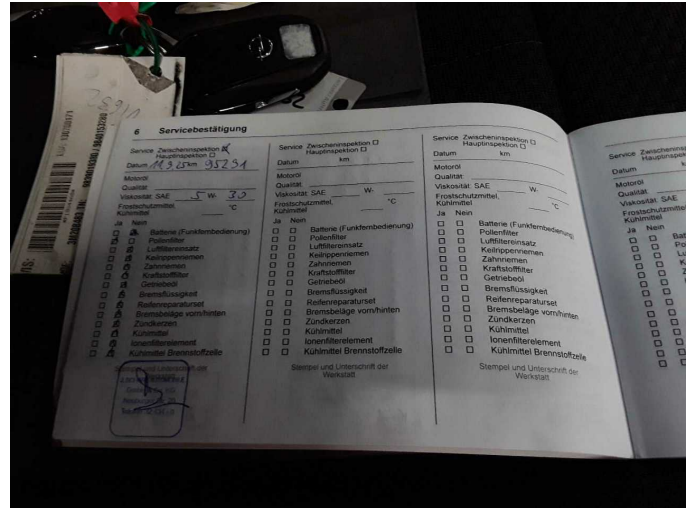


Figure 14: Documents

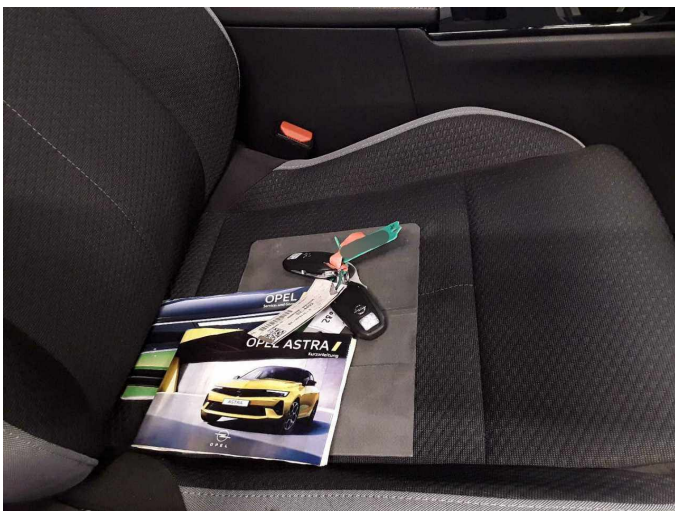


Figure 15: Documents

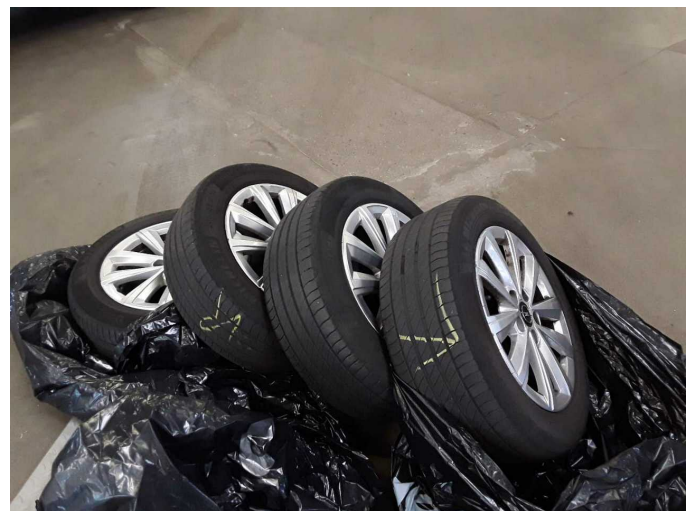


Figure 16: Additional tyres

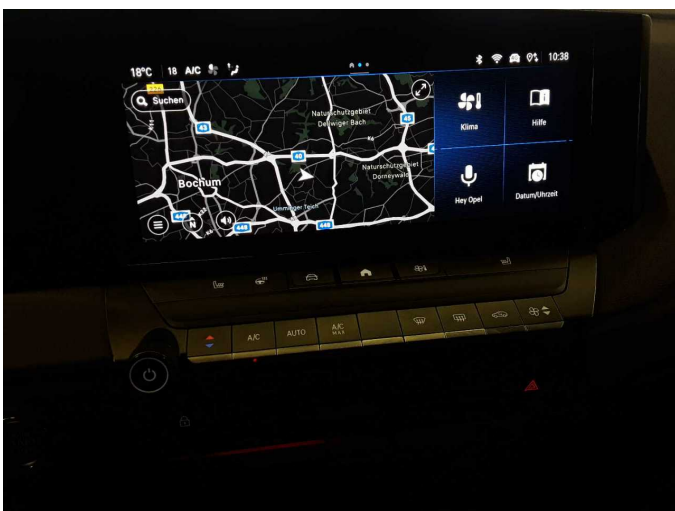


Figure 17: Navigation



Figure 18: Misc.



Figure 19: Misc.



Figure 20: Misc.



Figure 21: Misc.



Figure 22: Misc.



Figure 23: Misc.



Figure 24: Misc.



Figure 25: Misc.



Figure 26: Misc.



Figure 27: Misc.



Figure 28: Misc.

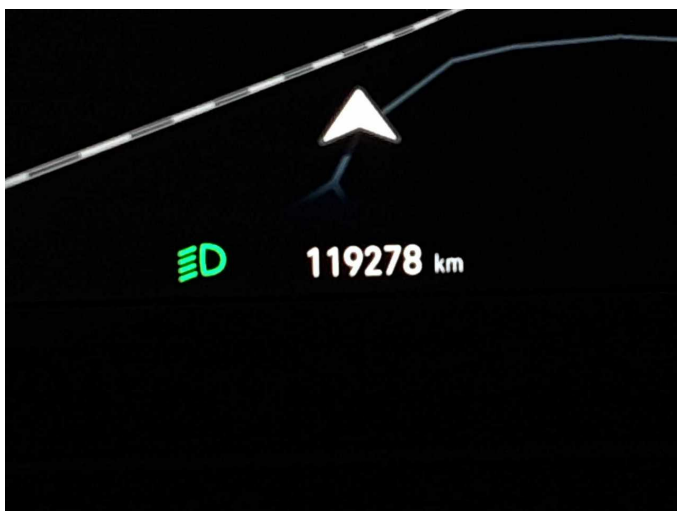


Figure 29: Misc.



Damage 1: Door - front left side: Door - Scratch(es) - Smart repair



Damage 1: Door - front left side: Door - Scratch(es) - Smart repair



Damage 2: Sill - right side: Sill - Scratch(es) - Smart repair



Damage 2: Sill - right side: Sill - Scratch(es) - Smart repair



Damage 3: Door - rear right side: Door - Scratch(es) - Smart repair



Damage 3: Door - rear right side: Door - Scratch(es) - Smart repair



Damage 4: Side panel - rear left side: Side panel - Scratch(es) - Paint



Damage 4: Side panel - rear left side: Side panel - Scratch(es) - Paint



Damage 4: Side panel - rear left side: Side panel - Scratch(es) - Paint



Damage 5: Rear bumper: Rear bumper - Scratch(es) - Paint



Damage 5: Rear bumper: Rear bumper - Scratch(es) - Paint



Damage 5: Rear bumper: Rear bumper - Scratch(es) - Paint



Damage 6: Front bumper: Front bumper (Sandstrahleffekt) - Stone chips - Paint



Damage 6: Front bumper: Front bumper (Sandstrahleffekt) - Stone chips - Paint



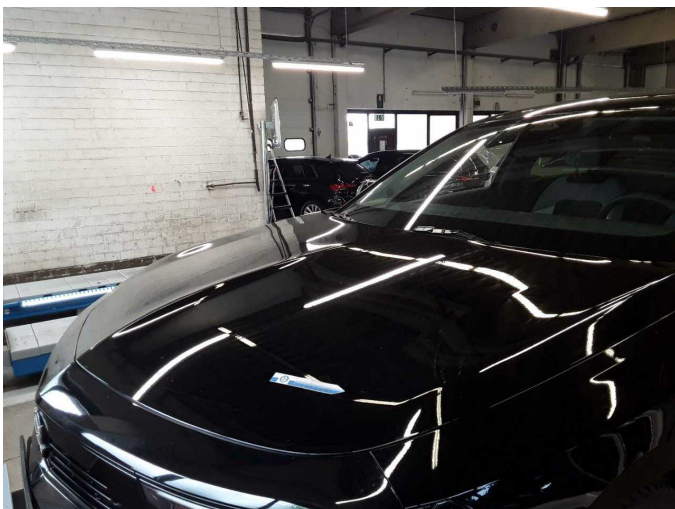
Damage 6: Front bumper: Front bumper (Sandstrahleffekt) - Stone chips - Paint



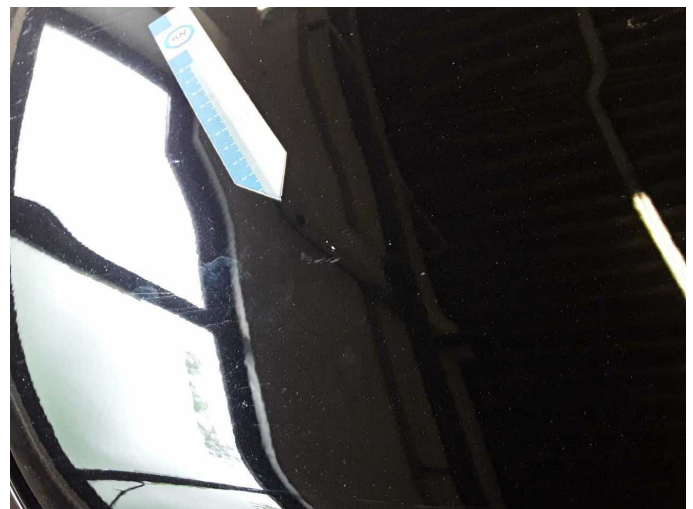
Damage 6: Front bumper: Front bumper (Sandstrahleffekt) - Stone chips - Paint



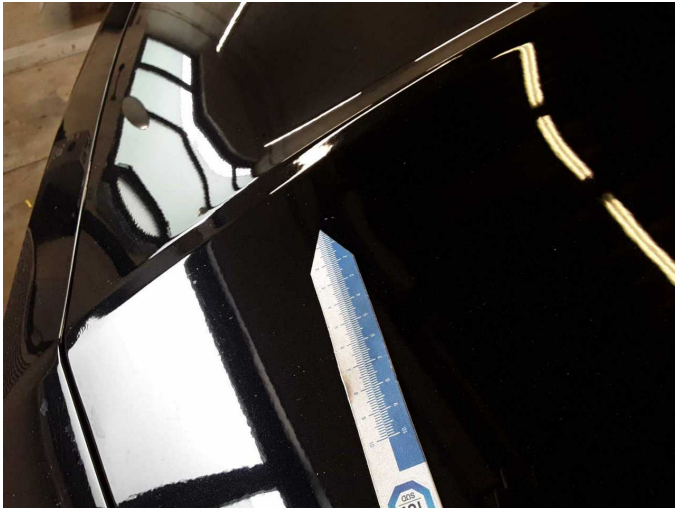
Damage 6: Front bumper: Front bumper (Sandstrahleffekt) - Stone chips - Paint



Wear and tear 1: Bonnet: Bonnet - Stone chips - No deduction



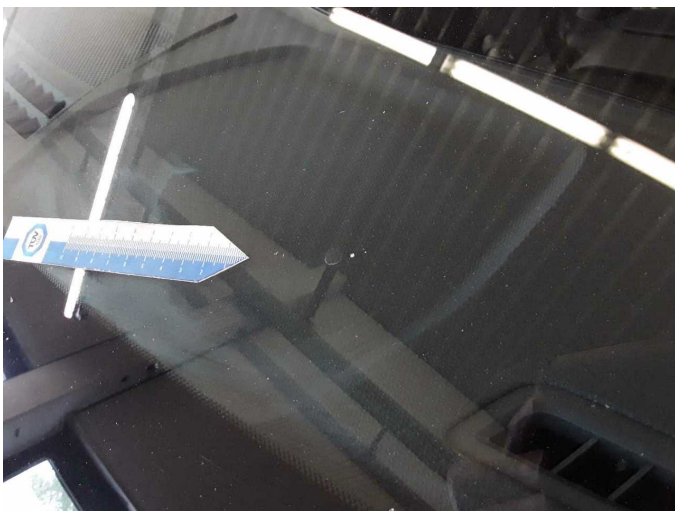
Wear and tear 1: Bonnet: Bonnet - Stone chips - No deduction



Wear and tear 1: Bonnet: Bonnet - Stone chips - No deduction



Wear and tear 2: Vehicle glazing: Windscreen - Stone chips - No deduction



Wear and tear 2: Vehicle glazing: Windscreen - Stone chips - No deduction



Repainting 1: Roof, Door - front right side



Repainting 1: Roof, Door - front right side



Repainting 1: Roof, Door - front right side



Repainting 1: Roof, Door - front right side



Wartungshistorie

(gemäß Auftraggeber Informationen)

Fahrgestellnummer: VXXFCYHZTP1084460

Hersteller / Modell: OPEL OPEL Astra Sports Tourer 1.5 D Automatik Business Edition

Datum	KM-Stand	Beschreibung
09.03.2026	115.035	Motoröl b. Wartung; Ölfilter ern; Ölwechsel; Wartung Sonstiges
10.09.2025	95.291	Motoröl b. Wartung; Ölfilter ern; Regelwartungsdienst; Wartung Sonstiges
08.04.2025	73.302	Motoröl b. Wartung; Ölfilter ern; Ölwechsel; Wartung Sonstiges
18.11.2024	52.441	Kraftstofffilter ern; Luftfiltereinsatz ern; Motoröl b. Wartung; Ölfilter ern; Regelwartungsdienst; Wartung Sonstiges
24.06.2024	25.232	Motoröl b. Wartung; Ölfilter ern; Regelwartungsdienst; Wartung Sonstiges