

Expertise

Protocol number: 46044532
Order No. / Reference: 26518268
Inspection date: 19 Jun 2026

Manufacturer: Seat

Model: Tarraco 2.0 TDI SCR DSG Xperience

VIN: VSSZZKN4PW000972



Vehicle details

Manufacturer / Type / Model / Equipment

Seat Tarraco 2.0 TDI SCR DSG Xperience

Vehicle Identification number VSSZZKN4PW000972

Mileage (Read) 78,961 km

First registration 17 Mar 2023

Number of holders 2

Next periodical technical inspection 05/2028
(Report on hand)

Power / Engine displacement 110 kw / 1,968 ccm

Fuel type / Cylinder Diesel / 4

Gearbox / Number of gears Automatic / 7

Type of drive Front drive

Type of vehicle SUV

Colour / colour code Deep Schwarz (C9X)

Doors / Seats 5 / 5

Upholstery type Leather

Colour of upholstery Black



Vehicle details			
Maintenance booklet / proof	digital proof / complete	Next maintenance in	1,600 km
Last service on / at	06/2025 at 57,592 km		
Key is / should be	2 / 2	FZG documents	ZB#2 (B) was available (copy), ZB#1 (S) was not available.
		Letter No.	GN382959
Previous damage / Accident	Detectable	Repainting	None detectable
Inspection conditions	sufficient	Lifting equipment / pit	yes
Test drive	Not performed	Engine function test	Performed
Manufacturer key number/ type code number	7593 / AOR 02881		
Emission standard	EURO6;WLTP;AP;PI/CI; M, N1 I	fine dust sticker	
Permitted total weight	2,270 kg	Empty weight	

Tyres

Mounted tyres				
#	Tyre size	Type of tyre	Manufacturer	Tread depth
1)	235/50 R19 99V	Summer tyres on Light alloy	Hankook	4mm / 4mm
2)	235/50 R19 99V	Summer tyres on Light alloy	Hankook	6mm / 6mm
Additional tyres				
#	Tyre size	Type of tyre	Manufacturer	Tread depth
1)	215/65 R17 103H	Winter tyres on Light alloy	Pirelli	7mm / 7mm
2)	215/65 R17 103H	Winter tyres on Light alloy	Pirelli	7mm / 7mm
Replacement				
Typ	Tyre size	Type of tyre	Manufacturer	Tread depth
N	145/85 R18 103M	Summer tyres on Steel	Sonstige	4 mm

Legend: Tread depth information for the left tire is listed first, for the right tire it is listed second on the axle in the direction of travel.

TÜV SÜD Auto Partner GmbH
Gutenbergstraße 13
70771 Leinfelden-Echterdingen

Inspection location
Mosolf SE & Co.KG
August-Horch-Straße 1
04519 Rackwitz



Equipment



Standard equipment

- 12V socket at the front
- Storage pocket on the back of the front seats
- Ambient lighting (multicolored) in the door panels
- Adaptive Cruise Control (ACC) up to 210 km/h
- Exterior mirror housings in body color
- Owner's manual holder under the driver's seat
- Chrome applications in the interior
- Diesel particulate filter and SCR catalyst
- Three-point automatic seat belts, front and rear
- Electronic parking brake including auto-hold function
- Electric windows front and rear
- Gear recommendation display
- Luggage compartment cover
- Illuminated glove compartment
- LED taillights (with dynamic turn signals and LED light strip - Infinite Light)
- ISOFIX child seat restraint system (for the front passenger seat and the 2nd row of seats, left and right, including top tether anchor points)
- Headrests, 2 front, 3 rear
- Paint finish: Solid
- Reading lights, 2 in the front and 2 in the rear
- Center console with integrated storage compartment, center armrest, cup holders
- Emergency call service
- Park Assist with front and rear parking aid
- Upholstery: Fabric/Dinamica
- Radio accessories: Full Link (Android Auto - Apple CarPlay incl. Full Link Wireless)
- Rain sensor
- Tire pressure monitoring system
- Wheels: 4 "Exclusive Aero" alloy wheels, diamond-turned finish (7J x 19 with 235/50 R19 tires)
- Paddle shifters on the steering wheel
- SEAT Drive Profile with "Driving Experience" button and progressive steering (driving profiles can be individually selected - selected driving profile influences steering assistance, throttle response and shift characteristics (with DSG))
- Seats: Front passenger seat backrest can be folded down completely
- Seats: Sport comfort seats in the front
- Seats: Front seats with height adjustment
- Lane departure warning system
- LED daytime running lights
- Front Assist area monitoring system with City Emergency Braking function
- Virtual Cockpit (Fully digital instrument cluster with 10.25" TFT display)
- Electronic immobilizer
- Central locking, including tailgate, with remote control
- Storage compartment for glasses
- Airbags
- Automatic coming-home and leaving-home function
- Electrically adjustable, folding and heated exterior mirrors
- Turn signals and welcome light integrated into the exterior mirrors
- Black headliner
- Electronic differential lock (XDS)
- Third brake light
- Electronic Stability Control (ESC)
- Footwell lighting
- Luggage compartment, illuminated
- Transmission: 7-speed DSG automatic transmission
- Electrically operated tailgate (opening & closing)
- Rear window wiper and rear window heater
- Interior mirror automatically dimming
- Body covers on the wheel arches
- Climatronic air conditioning system with 3 climate zones and rear control unit
- Radiator grille in chrome design
- Steering wheel: Multifunction steering wheel in leather
- Light sensor with automatic headlight control
- Fatigue detection
- LED fog lights with cornering light function
- Package: Chrome package (chrome trim on the side windows - roof rails in silver)
- Radio: Media-System Plus (Audio system with 8.25" color touchscreen - Digital radio reception DAB+ - 2 USB-C ports in the front - USB-C charging socket for the 2nd row of seats - Bluetooth interface with integrated hands-free system and audio streaming - 8 speakers)
- Wheels: Tyre fit
- Rear view camera
- SEAT CONNECT (prepared for activation of the service packages Security/Assistance and Remote Access)
- Side windows from the 2nd row of seats and rear window are dark tinted.
- Side trim in silver
- Electromechanical power steering
- Seats: Lumbar support for driver and front passenger
- Seats: Rear bench seat longitudinally adjustable and asymmetrically split and foldable (with center armrest)
- Sun visors with illuminated makeup mirror
- Start-stop technology
- Front door sill trims in aluminum look, illuminated
- Variable luggage compartment floor
- Lashing eyes in the luggage compartment
- Full LED headlights (low beam and high beam in LED technology - dynamic headlight range control)
- Thermal insulation glazing



Extra equipment

- Trailer maneuvering assistant (incl. parking assist with front parking aid)
- Deletion of the lettering on the tailgate
- Luggage partition net (including remote release for folding down the rear seat backrest)
- Package: XL Driving Assistance Package for Navigation System (High Beam Assist - Side Assist - Travel Assist - Emergency Assist - Pre-Crash Assist with Rollover Detection - Leather Multifunction Steering Wheel, Heated - Traffic Sign Recognition - Adaptive Cruise Control (ACC) up to 210 km/h with Predictive Speed Control)
- Panoramic glass sliding roof, electric, including sunshade blind.
- Radio accessories: BeatsAudio sound system (9 speakers - digital 12-channel amplifier - subwoofer - 340 watts total power)
- Wheels: Spare wheel as emergency wheel
- Power outlet: 230V socket in the luggage compartment
- Top View Camera
- Swiveling towbar with electric release
- INFOTAIN Business Package
- Heated and infrared-reflective windshield
- Paint finish: Metallic
- Navigation system with 9.2" color touchscreen (online infotainment function - prepared for the use of extended mobile online services - voice control - navigation data incl. MAPCARE - Full Link - Android Auto - Apple CarPlay incl. Full Link Wireless)
- Package: Leather package (passenger seat backrest fully foldable - seat center and side bolsters in leather, color black - front headrests, longitudinally and height adjustable - sport comfort seats in front - front seats and outer seats of the 2nd row heated)
- Radio accessories: Wireless charger in the storage compartment of the center console
- Seats: Driver's seat electrically adjustable with memory function (exterior mirrors with memory function - lumbar support electrically adjustable)

Brief expert findings

Documents submitted	At the time of the inspection, the vehicle registration certificate Part 2 (title) was available, but the vehicle registration certificate Part 1 (document) was not. (Copy)
VIN comparison	The vehicle identification number (VIN) was read from the vehicle and its conformity with the submitted documents was confirmed by the undersigned during the inspection.
Inspection	The inspection conditions were sufficient for the assessment of the vehicle. Lifting equipment and/or a pit were available for examining the vehicle.
Test drive	No test drive/shunting maneuver was carried out during the inspection of the vehicle.
Engine function test	An engine test run was performed.

Value reducing factors

No.	Component group	Description
1	Door - front right side	Door edge - Scratch(es) - Smart repair
2	Interior	Cargo area floor - Broken / torn - Replace
3	Side panel - rear right side	Sill - Dent / paintcoat damage - Repair and paint

Previous damages

No.	Previous damage	Extent of damage (Net)
1	Rear, Provided by user / customer, from 26 Apr 2024	3.042,26 €



Order/Scope of Order

An order was placed to prepare a sales report for the described vehicle. This report includes the following:

- Description of key vehicle information
- Documentation of equipment features
(*Delivery by third-party service providers*)
- Documentation of damage, defects, missing parts
- Documentation of prior damage, unrepaired prior damage, repainting
- A brief visual or functional inspection of the equipment details, if possible.
(*Functional testing of driver assistance systems is not included in the scope of services!*)
- a photographic documentation of the vehicle

Basis for the order

This product is based on the guidelines for vehicle returns and valuations published by Alphabet Fleet GmbH. The expert makes the specific findings in each individual case objectively, within the framework of the prescribed standards, based on their own expertise.

The vehicle inspection takes place in a fully assembled, unassembled state.

Damage or defects that can only be detected during disassembly/diagnostic work or through further investigation remain within the realm of prognostic risk. An increased risk exists due to concealed defects caused by fraudulent misrepresentation and which were not identifiable by the expert.

Damage or defects resulting from normal use or wear and tear of the vehicle will be accepted in accordance with the applicable standard.

There was no explicit identification or monetary consideration of the expected features within the product.

Features which, in their nature and extent, slightly exceed normal use but do not constitute unacceptable damage, will be documented and indicated as signs of wear, if applicable.

Damage or defects that, according to the applicable standard, can no longer be attributed to normal use or wear and tear are listed under "Value Reducing Factors" in the product description.

Depending on the product specification, a monetary ID can be provided. If this takes place, the costs can be 100% d or pro rata depending on the vehicle's age and mileage.

Previous damages

According to available information previous damages were repaired at the vehicle. Traces of repairs, which allow conclusions about the area of repair, were not recognizable during the inspection.

Comments

- Der Winterradsatz ist kein Bestandteil der Ausstattungsliste.



Figure 1: Diagonal front (left)



Figure 2: Diagonal front (right)



Figure 3: Diagonal rear (left)



Figure 4: Diagonal rear (right)



Figure 5: Interior - front



Figure 6: Interior - rear



Figure 7: Instrument cluster



Figure 8: Instrument panel



Figure 9: Interior 360° view

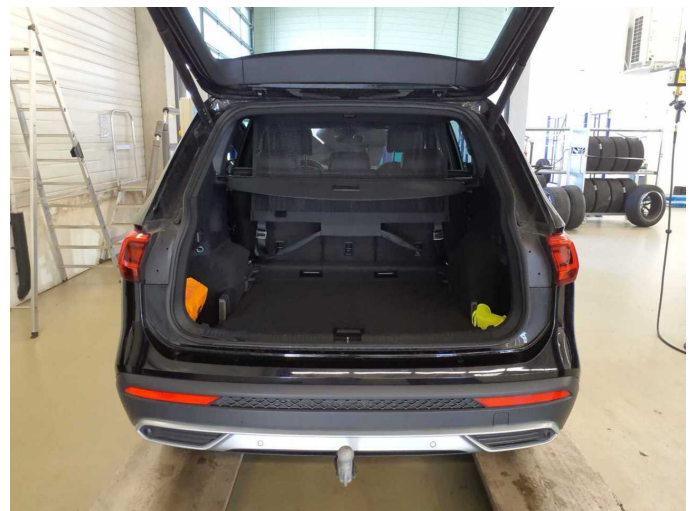


Figure 10: Cargo area

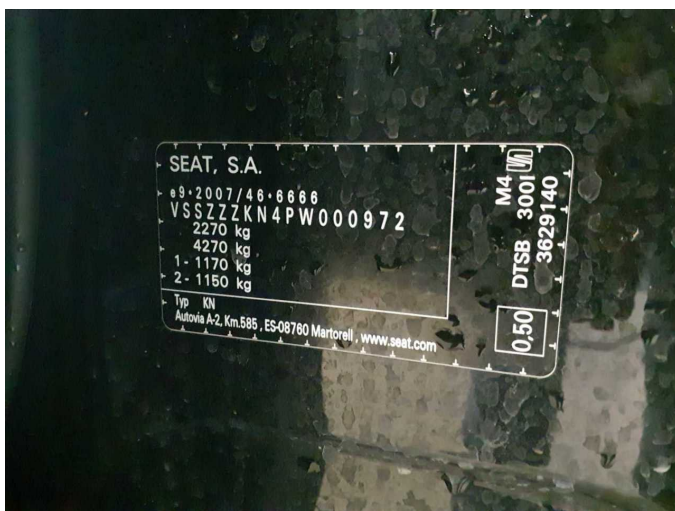


Figure 11: VIN



Figure 12: Mounted tyres



Figure 13: Documents



Figure 14: Documents



Figure 15: Additional tyres



Figure 16: Additional tyres



Figure 17: Navigation



Figure 18: Misc.



Figure 19: Misc.



Figure 20: Misc.



Figure 21: Misc.



Figure 22: Misc.

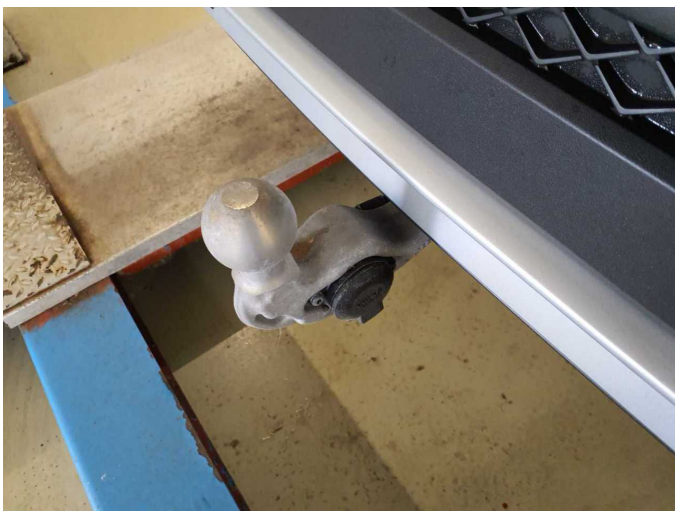


Figure 23: Misc.



Figure 24: Misc.



Figure 25: Misc.

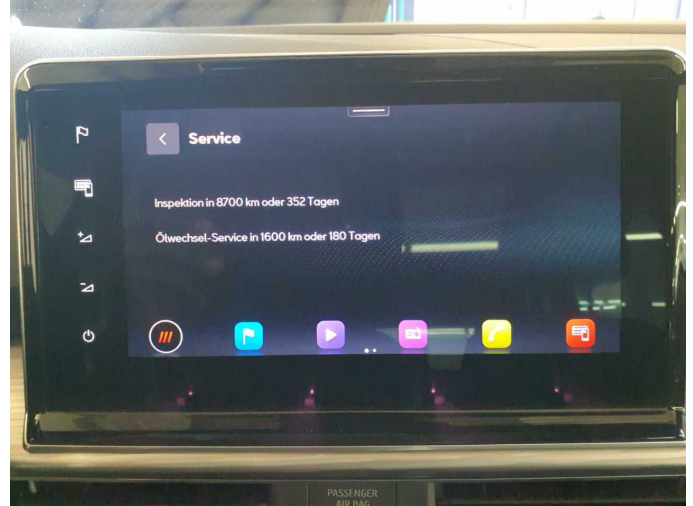


Figure 26: Misc.

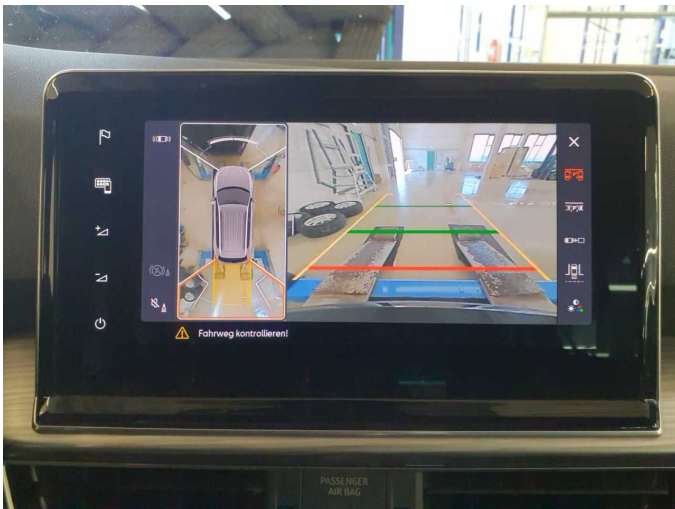


Figure 27: Misc.



Figure 28: Misc.



Damage 1: Door - front right side: Door edge - Scratch(es) - Smart repair



Damage 1: Door - front right side: Door edge - Scratch(es) - Smart repair



Damage 2: Interior: Cargo area floor - Broken / torn - Replace



Damage 3: Side panel - rear right side: Sill - Dent / paintcoat damage - Repair and paint



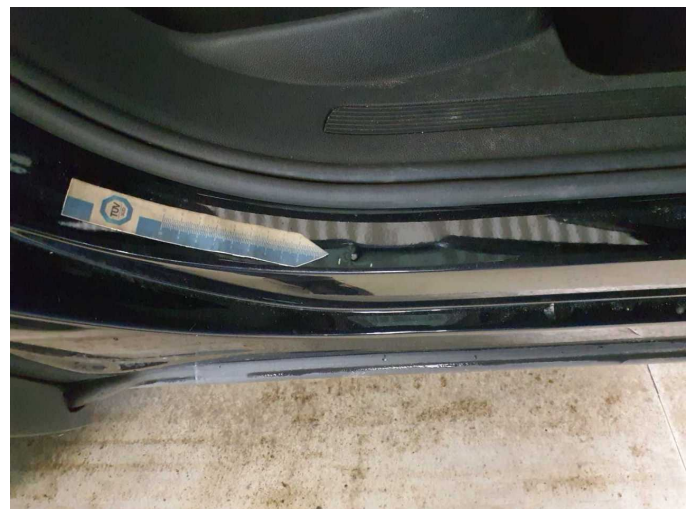
Damage 3: Side panel - rear right side: Sill - Dent / paintcoat damage - Repair and paint



Damage 3: Side panel - rear right side: Sill - Dent / paintcoat damage - Repair and paint



Damage 3: Side panel - rear right side: Sill - Dent / paintcoat damage - Repair and paint



Damage 3: Side panel - rear right side: Sill - Dent / paintcoat damage - Repair and paint



Damage 3: Side panel - rear right side: Sill - Dent / paintcoat damage - Repair and paint



Damage 3: Side panel - rear right side: Sill - Dent / paintcoat damage - Repair and paint



Wartungshistorie

(gemäß Auftraggeber Informationen)

Fahrgestellnummer: VSSZZZKN4PW000972

Hersteller / Modell: SEAT SEAT Tarraco 2.0 TDI SCR DSG Xperience

Datum	KM-Stand	Beschreibung
19.05.2026	78.761	AU; Reparatur Sonstiges; Systemtest/Eigendiagnose
06.06.2025	57.592	Bremsflüssigkeit; Bremsflüssigkeit ern; Motoröl b. Wartung; Ölfilter ern; Regelwartungsdienst; Wartung Sonstiges
21.05.2024	33.281	Regelwartungsdienst
16.04.2024	27.796	Motoröl b. Wartung; Ölfilter ern; Regelwartungsdienst; Wartung Sonstiges