

Expertise

Protocol number: 46091256
Order No. / Reference: 26488032
Inspection date: 23 Jun 2026

Manufacturer: Volkswagen

Model: Passat Variant 1.4 TSI Plug-In-Hybrid DSG GTE

VIN: WVVZZZ3CZME077472



Vehicle details

Manufacturer / Type / Model / Equipment

Volkswagen Passat Variant 1.4 TSI Plug-In-Hybrid DSG GTE

Vehicle Identification number WVVZZZ3CZME077472

Mileage (Read) 67,570 km

First registration 2 Mar 2021

Number of holders 1

Power / Engine displacement 115 kw / 1,395 ccm

Fuel type / Cylinder Hybr.B/E ext.auf1 / 4

Gearbox / Number of gears Automatic / 6

Type of drive Front drive

Type of vehicle Station wagon

Colour / colour code Aquamarinblau metallic (P5M)

Doors / Seats 5 / 5

Upholstery type Cloth

Colour of upholstery Black



Vehicle details

Maintenance booklet / proof	digital proof / complete	Next maintenance in	0 km
Last service on / at	01/2025 at 48,042 km		
Key is / should be	2 / 2	FZG documents	ZB#2 (B) was available (copy), ZB#1 (S) was not available.
		Letter No.	GA691361
Previous damage / Accident	Detectable	Repainting	Detectable
Inspection conditions	sufficient	Lifting equipment / pit	yes
Test drive	Not performed	Engine function test	Performed
Manufacturer key number/ type code number	0603 / BRZ 00074		
Emission standard	EURO6;WLTP;AP;PI/CI; M, N1 I	fine dust sticker	
Permitted total weight	2,270 kg	Empty weight	

Tyres

Mounted tyres

#	Tyre size	Type of tyre	Manufacturer	Tread depth
1)	235/45 R18 98V	Winter tyres on Light alloy	Pirelli	6mm / 6mm
2)	235/45 R18 98V	Winter tyres on Light alloy	Pirelli	5mm / 5mm

Additional tyres

#	Tyre size	Type of tyre	Manufacturer	Tread depth
1)	235/45 R18 94W	Summer tyres on Light alloy	Pirelli	5mm / 5mm
2)	235/45 R18 94W	Summer tyres on Light alloy	Pirelli	5mm / 5mm

Legend: Tread depth information for the left tire is listed first, for the right tire it is listed second on the axle in the direction of travel.



Equipment

Standard equipment

- Airbag for driver and front passenger
- Anti-lock braking system (ABS)
- Adaptive Cruise Control (ACC) "stop & go", including speed limiter
- Hill start assist
- Headliner in Mistral Grey
- Parking aid - warning signals for obstacles in the front and rear area
- Remote release for luggage compartment lid
- Windscreen made of laminated safety glass, heat and sound insulating
- Transmission: 6-speed DSG
- ISOFIX mounting points
- Air conditioning system "Air Care Climatronic" with 3-zone temperature control and allergen filter
- Rear headrests (3)
- Paint finish: Solid
- LED headlights with daytime running lights
- Headlight range control
- Makeup mirrors in the sun visors
- Fatigue detection
- Mesh partition
- Non-smoking version
- Emergency call service
- Package: Light and Sight Package "Plus"
- Proactive occupant protection system in conjunction with "Front Assist"
- Wheels: 4 "Montpellier" alloy wheels 7 J x 17
- Rear bench seat, undivided, backrest asymmetrically split and foldable, with center armrest
- Seat belts: Three-point automatic seat belt
- Start-stop system
- Bumpers in body color
- Textile floor mats
- Warning tone and light for unfastened seat belts front and rear
- Airbag, head airbag system for front and rear passengers
- App-Connect Wireless
- Electrically adjustable and heated exterior mirrors
- Cup holders (2) front
- third brake light
- black roof rails
- Electronic parking brake including auto-hold function
- Electronic stability program and electromechanical brake booster
- Pedestrian detection
- Adjustable luggage compartment floor
- Interior lights front and rear with switch-off delay and dimming function
- Instrument cluster with electronic speedometer, odometer and trip odometer, tachometer
- Front headrests
- LED taillights
- Steering wheel: Multifunction sports steering wheel in leather, with paddle shifters
- "Premium" multifunction display with multicolor screen
- Navigation system "Discover Media" incl. "Streaming & Internet"
- Emergency braking assistant "Front Assist" (for automatic distance control ACC up to 210 km/h)
- Upholstery: Fabric "Weave"
- Radio accessories: Digital radio reception DAB+
- Tire pressure monitoring system (passive)
- LED taillights
- Keyless start system without safe locking
- Power steering
- Seats: Front seats are height-adjustable
- 12V power outlet on the rear of the center console
- Telephone interface
- First aid kit, warning triangle and high-visibility vest
- Electronic immobilizer
- Black trim strips on the side windows



Extra equipment

- Cable for AC charging station (incl. standard mains charging cable for household socket)
- Decorative inlays in brushed aluminum (for instrument panel, door panels)
- Head-up display
- Luggage net
- On-board tools and jack
- Package: "Business Premium" package incl. navigation (from Business trim level) (2 USB-C ports in the front, 1 USB-C charging port in the rear, 230V socket, App-Connect incl. wireless, Apple CarPlay, Android Auto, "Travel Assist" driver assistance system and "Lane Assist" lane keeping system, Air Care Climatronic with 3-zone temperature control, allergen filter and rear controls, lumbar support in the front, electric on the driver's side, massage function on the driver's side, "Rear View" reversing camera, heated windshield washer nozzles, Comfort telephone interface, inductive charging function, heated front seats)
- Package: "Design and Comfort" in conjunction with "Business Premium" (silver anodized roof rails - stainless steel door sill trims front and rear - automatically heated windshield washer nozzles in the front - "ArtVelours" seat center panels of the front seats and outer rear seats, - inner side bolsters in "Vienna" leather - sport comfort seats in the front - heated front seats)
- Package: Driver Assistance Package "Plus" incl. IQ.LIGHT - LED matrix headlights in conjunction with Business Package (Dynamic Light Assist high beam control, Travel Assist, Lane Assist and Emergency Assist, LED matrix headlights, LED daytime running lights, cornering lights and dynamic turn signals, LED taillights with dynamic turn signals, dynamic headlight range control with dynamic cornering lights, rear fog lights on both sides, reversing lights on both sides, Park Assist including parking aid, Side Assist lane change assistant and Rear Traffic Alert)
- Proactive occupant protection system and lane change assistant "Side Assist" (Proactive occupant protection system in conjunction with "Front Assist" and "Side Assist" - lane change assistant "Side Assist" and parking assistant)
- Removable luggage compartment protective mat (back of the rear seat backrest with black rubber coating)
- Seats: ergoComfort seat with 14-way electric adjustment, memory and massage on driver's side in conjunction with Business Package (electrically folding exterior mirrors, auto-dimming on driver's side, ambient lighting and memory - electrically adjustable lumbar support in front, massage function on driver's side - electrically adjustable front seats, ergoComfort seat on driver's side, with memory function and comfort entry)
- Wheels: Tire Mobility Set omitted
- Anti-theft alarm system (interior monitoring, backup horn and tow-away protection - illuminated make-up mirror in the sun visors, extendable sun visors)
- Auxiliary heating and ventilation (with radio remote control and timer)
- Black roof rails with 2 silver anodized support bars (anti-theft protection and included in a storage bag)
- Navigation system "Discover Pro" incl. "Streaming & Internet" (4x20 Watt App-Con. Wireless Digital Cockpit. Operation with proximity sensor. Dual tuner with phase differentiation. DAB. Vehicle menu. Speed. Volume adjustment. Gestures. 32 GB SSD hard drive. Map 2D display. Tone control. 3-way TFT display with touchscreen. MP3. Navigation for Europe. Voice control. Telephone contact. Address. Telephone interface. "Comfort" with inductive charging. 2 USB iPod/iPhone. Traffic sign recognition. "We Connect Plus" incl. "We Connect". Dynamic route guidance. RDS. TMC tuner. Mobile key pre-activation, vehicle via smartphone.)
- Package: "Easy Open & Close" package including safe locking (extendable and removable luggage compartment cover with electric opening - tailgate with sensor-controlled opening and closing, with remote unlocking - keyless locking and starting system "Keyless Access" with safe locking)
- Package: Ambient lighting "Plus" (multicoloured ambient lighting - LED entry/warning lights in all doors - interior lights with switch-off delay and dimming function, 2 LED reading lights each in the front and rear)
- Package: Leather package "Nappa" with top comfort seats in front in conjunction with design and comfort package (windscreen washer nozzles automatically heated - seat center panels and inner side bolsters of the front seats and outer rear seats in leather "Nappa" - sport comfort seats in front - heated front seats)
- Paint finish: Special metallic paint
- Panoramic tilt/slide sunroof (with panoramic roof at the rear)
- Sunshade roller blind on the rear door windows
- Surround view "Area View" incl. reversing camera "Rear View" with Business Premium (displays the vehicle's surroundings in real time on the radio/navigation system display - assists when exiting blind driveways or side streets, when parking in and out of parking spaces, when maneuvering with a trailer or when driving off-road)
- Voice control
- Wheels: 4 light alloy wheels 8 J x 18 "Bonneville", only in combination with Aquamarine Blue (AirStop tires 235/45 R 18, optimized for rolling resistance - with individual installation)
- Wheels: Winter wheels (additional), light alloy, "Monterey" 8 J x 18 (AirStop winter tires 235/45 R 18 V - with individual installation)



Brief expert findings

Documents submitted	At the time of the inspection, the vehicle registration certificate Part 2 (title) was available, but the vehicle registration certificate Part 1 (document) was not. (Copy)
VIN comparison	The vehicle identification number (VIN) was read from the vehicle and its conformity with the submitted documents was confirmed by the undersigned during the inspection.
Inspection	The inspection conditions were sufficient for the assessment of the vehicle. Lifting equipment and/or a pit were available for examining the vehicle.
Test drive	No test drive/shunting maneuver was carried out during the inspection of the vehicle.
Engine function test	An engine test run was performed.

Value reducing factors

No.	Component group	Description
1	Instrument panel	Air nozzle - centre (Hinten) - Broken / torn - Replace
2	Exhaust system	Heat shield (Lose , hinten ,mitte) - Broken / torn - Replace
3	Wheel / tyres	Alloy rim - rear left side - Scratched - Loss in value
4	Wheel / tyres	Alloy rim - front left side - Scratched - Loss in value
5	Misc.	Inspection / maintenance - Due - Perform
6	Braking system	Brake discs and pads - rear - Corrosion - Replace
7	Side panel - rear right side	Side panel - Scratch(es) - Repair and paint
8	Side panel - rear left side	Side panel - Scratch(es) - Repair and paint
9	Braking system	Brake discs and brake pads - front - Corrosion - Replace
10	Wheel / tyres	Alloy rim - front right side - Scratched - Replace
11	Bonnet	Bonnet - Scratch(es) - Repair and paint
12	Rear bumper	Rear bumper (Incl. Anbauteile, Chrom erneuern,) - Scratched - Repair and paint

Wear and tear

No.	Component group	Description
1	Vehicle glazing	Windscreen - Stone chips - No deduction
2	Seat - front	Seat cover - left side - Scratch(es) - No deduction
3	Front bumper	Front bumper - Scratch(es) - No deduction

The vehicle shows signs of wear and tear commensurate with its age and use.

Previous damages

No.	Previous damage	Extent of damage (Net)
1	Side - left, Provided by user / customer, from 26 Mar 2025	2.139,70 €
2	Rear, Side right, Provided by user / customer, from 16 Jan 2022	2.792,32 €
3	Side - left, Provided by user / customer, from 9 Sept 2021	3.615,89 €
4	Side right, Provided by user / customer, from 21 Feb 2025	4.882,28 €

Repainting

No.	Repainting
1	Boot lid / rear door, Mudguard - left side, Mudguard - right side, Side panel - rear left side, Side panel - rear right side, Door - rear left side, Door - rear right side, Door - front left side, Door - front right side, Professionally carried out



Paint coat thickness measurement

Roof	125 µm	Boot lid / rear door	648 µm
Mudguard - left side	235 µm	Mudguard - right side	437 µm
Bonnet	127 µm	Side panel - rear left side	1,860 µm
Side panel - rear right side	466 µm	Door - rear left side	222 µm
Door - rear right side	388 µm	Door - front left side	362 µm
Door - front right side	283 µm		

Order/Scope of Order

An order was placed to prepare a sales report for the described vehicle. This report includes the following:

- Description of key vehicle information
- Documentation of equipment features
(*Delivery by third-party service providers*)
- Documentation of damage, defects, missing parts
- Documentation of prior damage, unrepaired prior damage, repainting
- A brief visual or functional inspection of the equipment details, if possible.
(*Functional testing of driver assistance systems is not included in the scope of services!*)
- a photographic documentation of the vehicle

Basis for the order

This product is based on the guidelines for vehicle returns and valuations published by Alphabet Fleet GmbH. The expert makes the specific findings in each individual case objectively, within the framework of the prescribed standards, based on their own expertise.

The vehicle inspection takes place in a fully assembled, unassembled state.

Damage or defects that can only be detected during disassembly/diagnostic work or through further investigation remain within the realm of prognostic risk. An increased risk exists due to concealed defects caused by fraudulent misrepresentation and which were not identifiable by the expert.

Damage or defects resulting from normal use or wear and tear of the vehicle will be accepted in accordance with the applicable standard.

There was no explicit identification or monetary consideration of the expected features within the product.

Features which, in their nature and extent, slightly exceed normal use but do not constitute unacceptable damage, will be documented and indicated as signs of wear, if applicable.

Damage or defects that, according to the applicable standard, can no longer be attributed to normal use or wear and tear are listed under "Value Reducing Factors" in the product description.

Depending on the product specification, a monetary ID can be provided. If this takes place, the costs can be 100% d or pro rata depending on the vehicle's age and mileage.

Previous damages

According to available information previous damages were repaired at the vehicle. Traces of repairs, which allow conclusions about the area of repair, were not recognizable during the inspection.



Figure 1: Diagonal front (left)



Figure 2: Diagonal front (right)



Figure 3: Diagonal rear (left)



Figure 4: Diagonal rear (right)

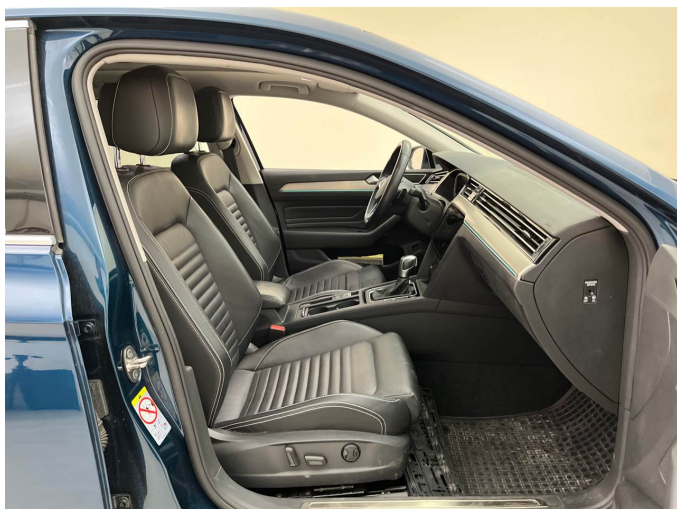


Figure 5: Interior - front



Figure 6: Interior - rear



Figure 7: Instrument cluster



Figure 8: Instrument panel



Figure 9: Interior 360° view



Figure 10: Cargo area

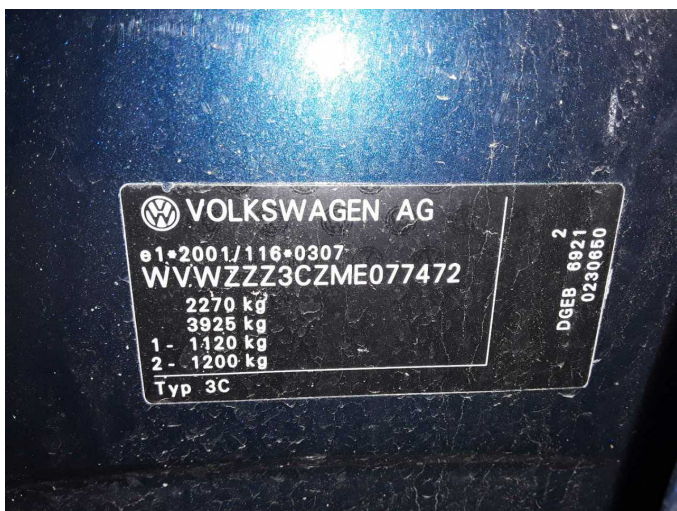


Figure 11: VIN



Figure 12: Mounted tyres



Figure 13: Documents

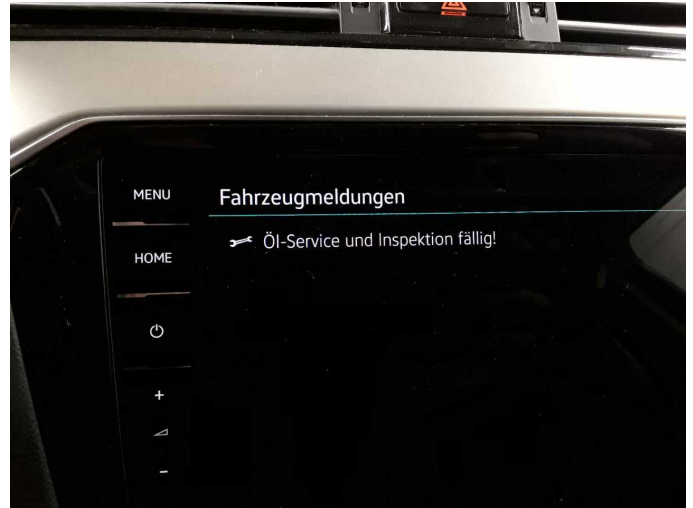


Figure 14: Documents



Figure 15: Documents



Figure 16: Additional tyres

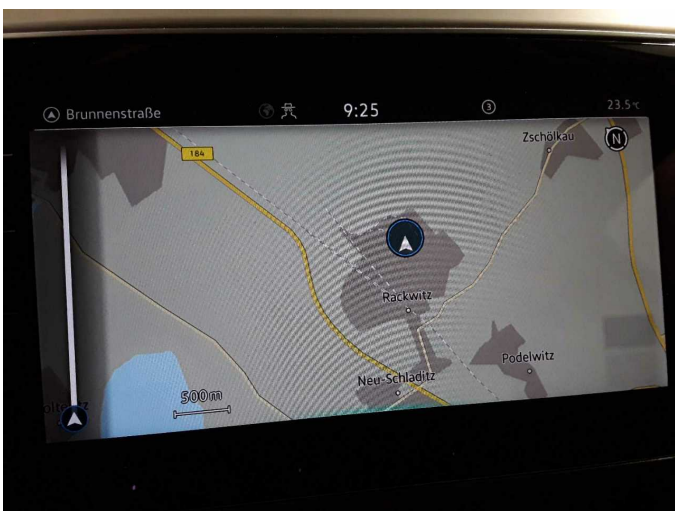


Figure 17: Navigation



Figure 18: Misc.



Figure 19: Misc.



Figure 20: Misc.

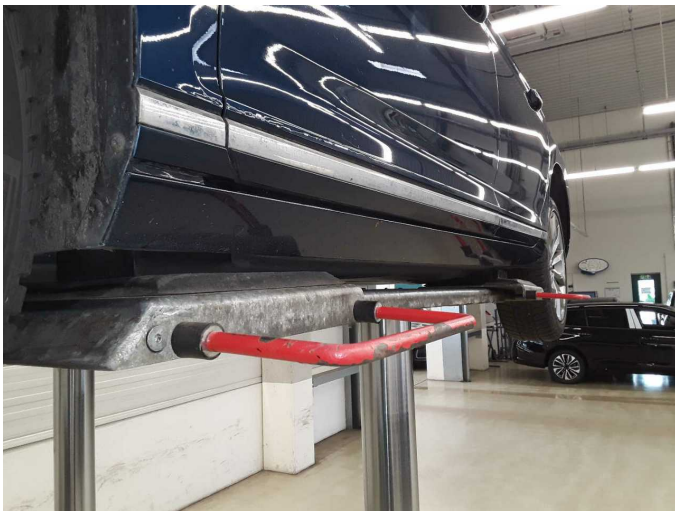


Figure 21: Misc.



Figure 22: Misc.

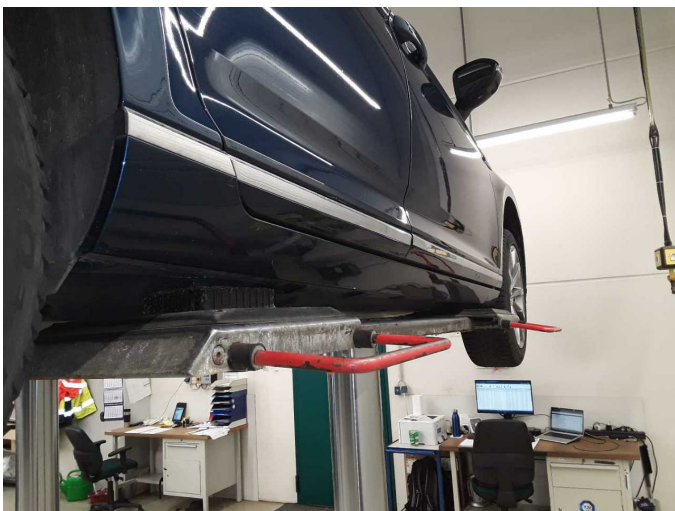


Figure 23: Misc.

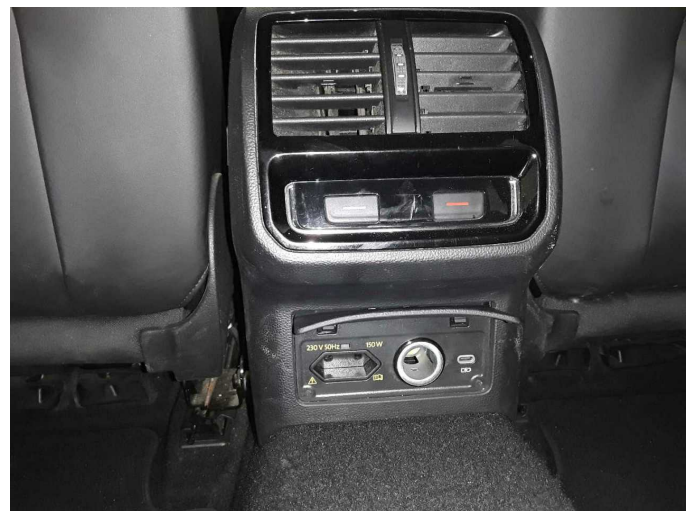


Figure 24: Misc.



Figure 25: Misc.



Figure 26: Misc.



Figure 27: Misc.



Figure 28: Misc.



Figure 29: Misc.

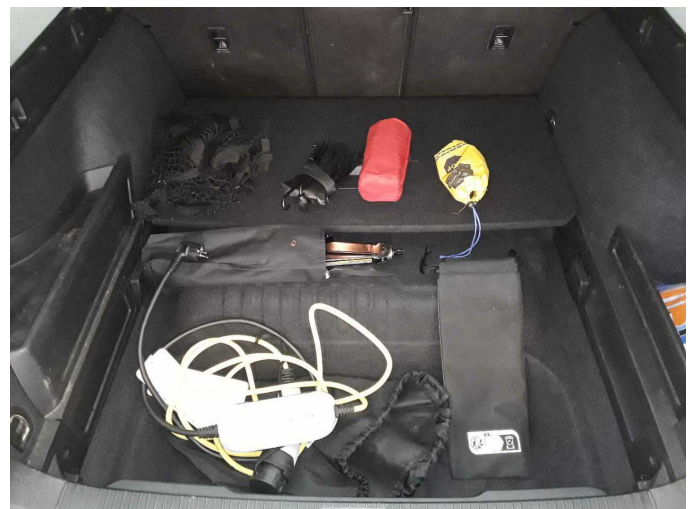


Figure 30: Misc.



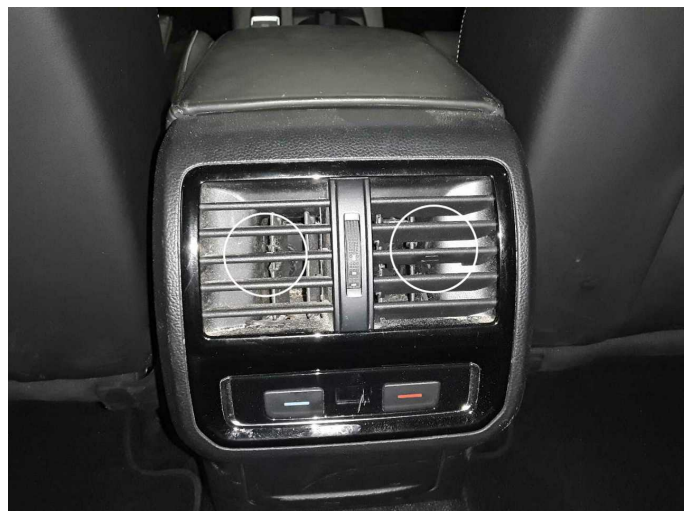
Figure 31: Misc.



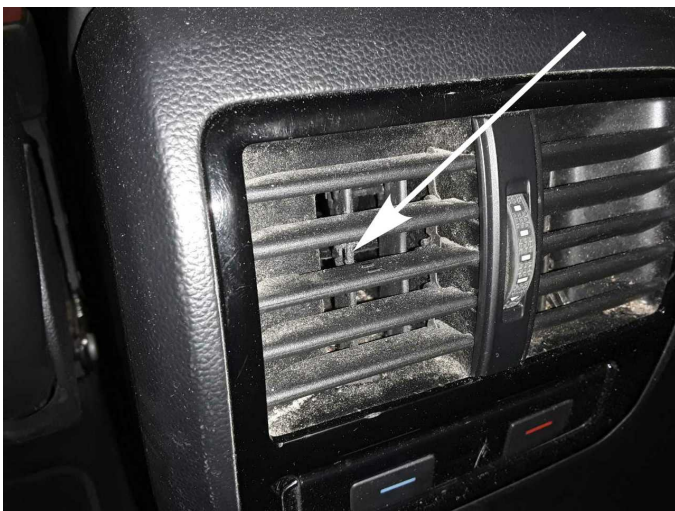
Figure 32: Misc.



Figure 33: Misc.



Damage 1: Instrument panel: Air nozzle - centre (Hinten) - Broken / torn - Replace



Damage 1: Instrument panel: Air nozzle - centre (Hinten) - Broken / torn - Replace



Damage 2: Exhaust system: Heat shield (Lose , hinten ,mitte) - Broken / torn - Replace



Damage 2: Exhaust system: Heat shield (Lose , hinten ,mitte) - Broken / torn - Replace



Damage 2: Exhaust system: Heat shield (Lose , hinten ,mitte) - Broken / torn - Replace



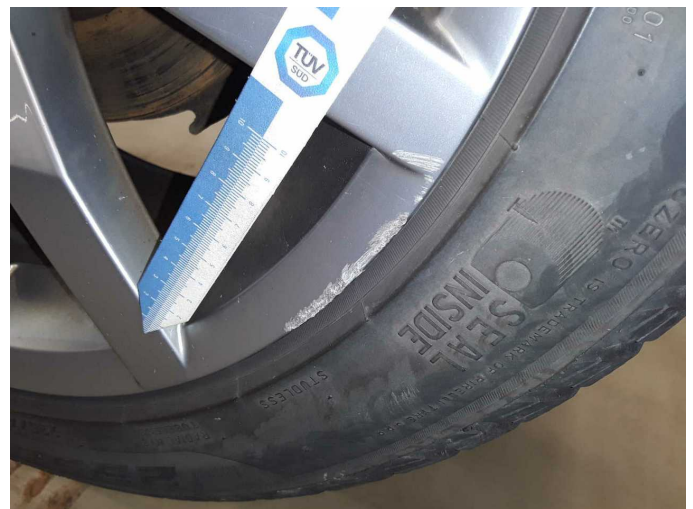
Damage 2: Exhaust system: Heat shield (Lose , hinten ,mitte) - Broken / torn - Replace



Damage 2: Exhaust system: Heat shield (Lose , hinten ,mitte) - Broken / torn - Replace



Damage 3: Wheel / tyres: Alloy rim - rear left side - Scratched - Loss in value



Damage 3: Wheel / tyres: Alloy rim - rear left side - Scratched - Loss in value



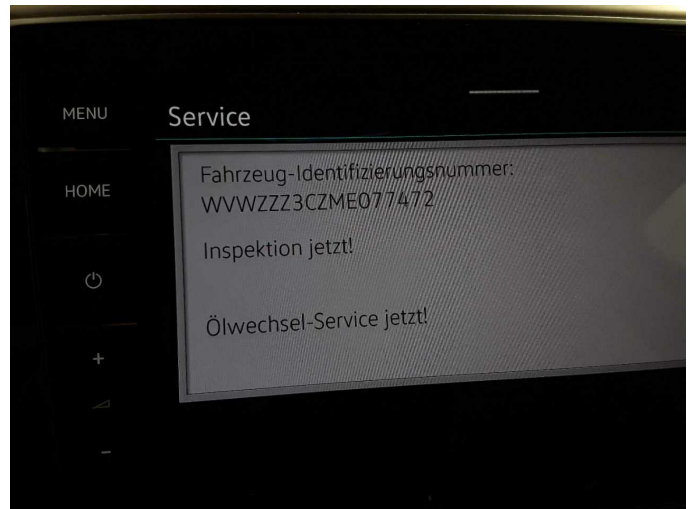
Damage 3: Wheel / tyres: Alloy rim - rear left side - Scratched - Loss in value



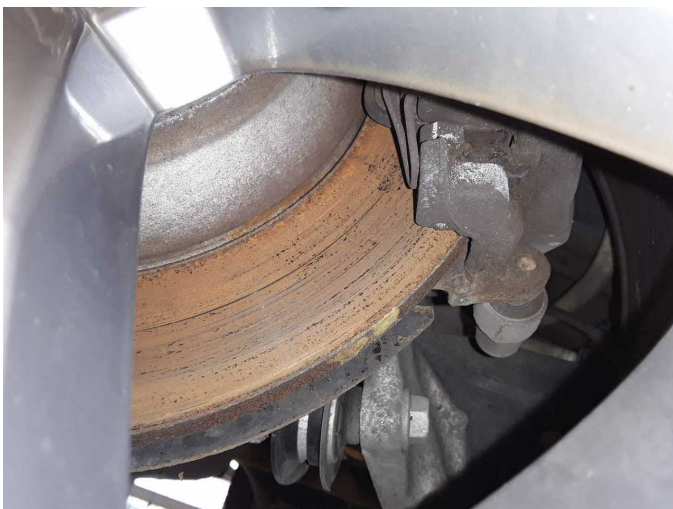
Damage 4: Wheel / tyres: Alloy rim - front left side - Scratched - Loss in value



Damage 4: Wheel / tyres: Alloy rim - front left side - Scratched - Loss in value



Damage 5: Misc.: Inspection / maintenance - Due - Perform



Damage 6: Braking system: Brake discs and pads - rear - Corrosion - Replace



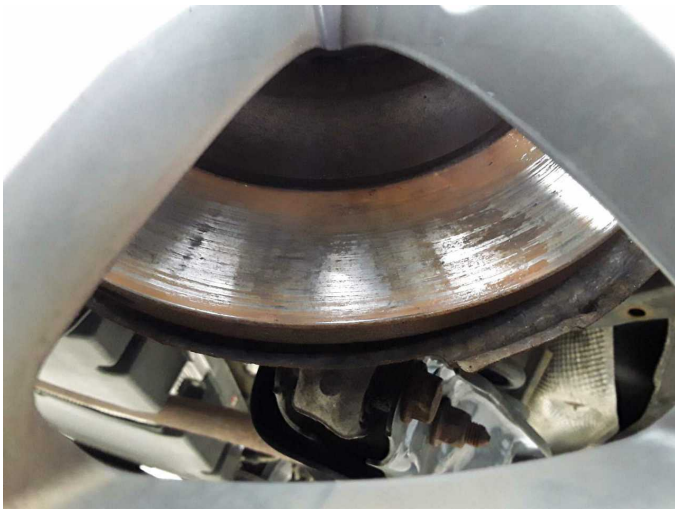
Damage 6: Braking system: Brake discs and pads - rear - Corrosion - Replace



Damage 6: Braking system: Brake discs and pads - rear - Corrosion - Replace



Damage 6: Braking system: Brake discs and pads - rear - Corrosion - Replace



Damage 6: Braking system: Brake discs and pads - rear - Corrosion - Replace



Damage 6: Braking system: Brake discs and pads - rear - Corrosion - Replace



Damage 7: Side panel - rear right side: Side panel - Scratch(es) - Repair and paint



Damage 7: Side panel - rear right side: Side panel - Scratch(es) - Repair and paint



Damage 7: Side panel - rear right side: Side panel - Scratch(es) - Repair and paint



Damage 7: Side panel - rear right side: Side panel - Scratch(es) - Repair and paint



Damage 8: Side panel - rear left side: Side panel - Scratch(es) - Repair and paint



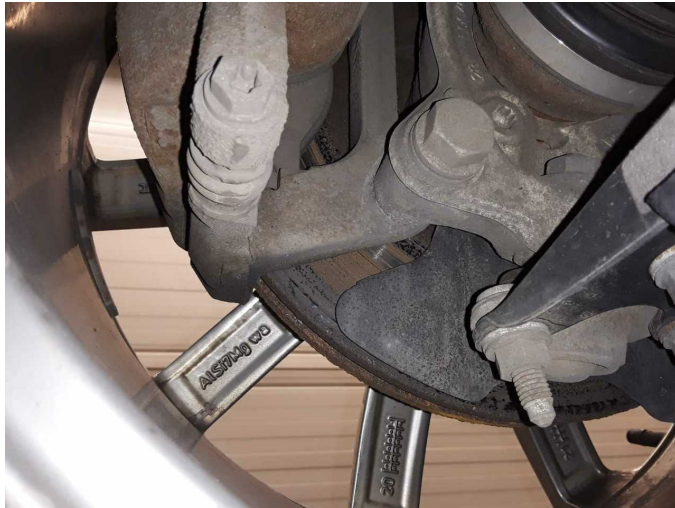
Damage 8: Side panel - rear left side: Side panel - Scratch(es) - Repair and paint



Damage 9: Braking system: Brake discs and brake pads - front - Corrosion - Replace



Damage 9: Braking system: Brake discs and brake pads - front - Corrosion - Replace



Damage 9: Braking system: Brake discs and brake pads - front - Corrosion - Replace



Damage 9: Braking system: Brake discs and brake pads - front - Corrosion - Replace



Damage 9: Braking system: Brake discs and brake pads - front - Corrosion - Replace



Damage 10: Wheel / tyres: Alloy rim - front right side - Scratched - Replace



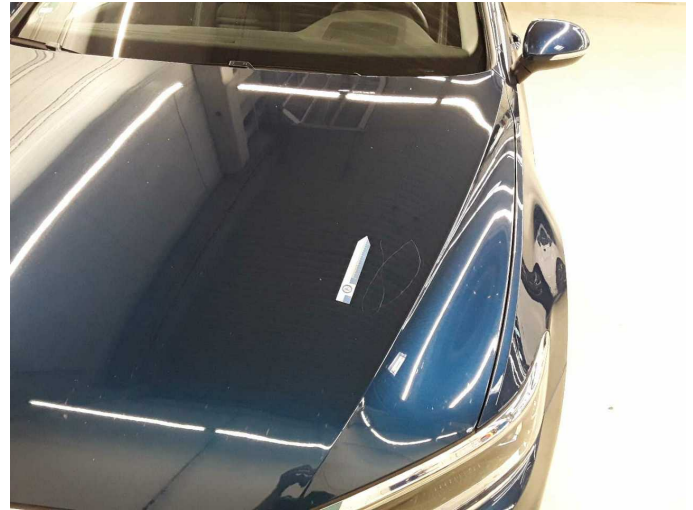
Damage 10: Wheel / tyres: Alloy rim - front right side - Scratched - Replace



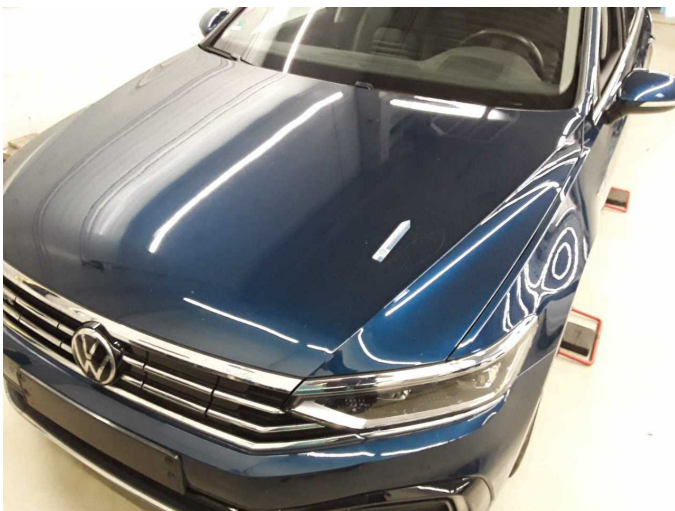
Damage 10: Wheel / tyres: Alloy rim - front right side - Scratched - Replace



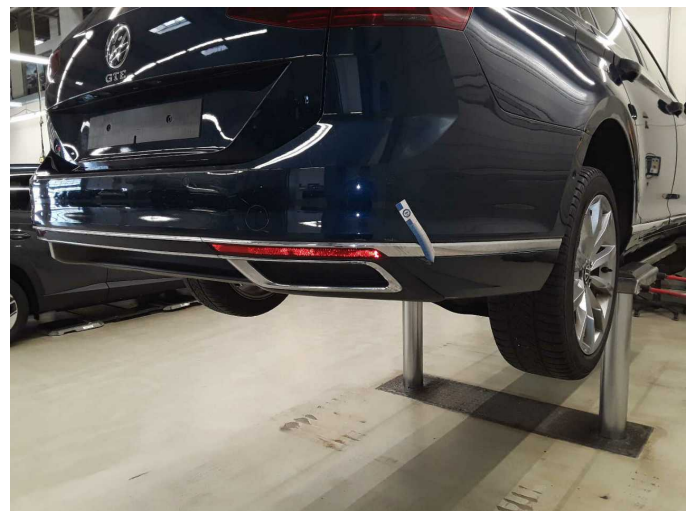
Damage 11: Bonnet: Bonnet - Scratch(es) - Repair and paint



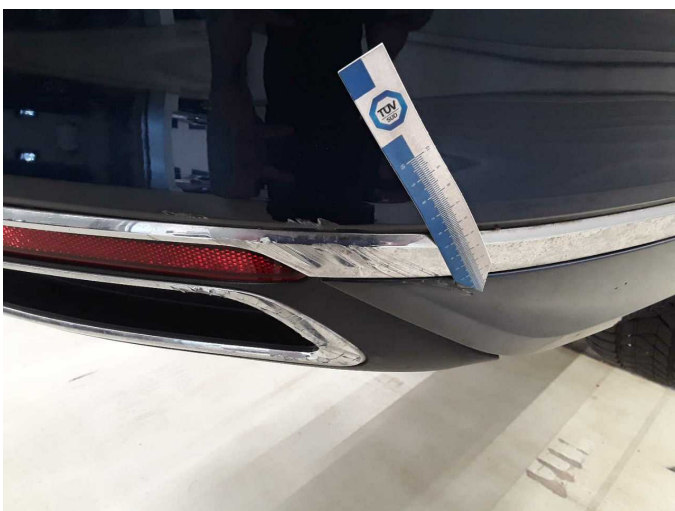
Damage 11: Bonnet: Bonnet - Scratch(es) - Repair and paint



Damage 11: Bonnet: Bonnet - Scratch(es) - Repair and paint



Damage 12: Rear bumper: Rear bumper (Incl. Anbauteile, Chrom erneuern,) - Scratched - Repair and paint



Damage 12: Rear bumper: Rear bumper (Incl. Anbauteile, Chrom erneuern,) - Scratched - Repair and paint



Damage 12: Rear bumper: Rear bumper (Incl. Anbauteile, Chrom erneuern,) - Scratched - Repair and paint



Damage 12: Rear bumper: Rear bumper (Incl. Anbauteile, Chrom erneuern,) - Scratched - Repair and paint



Damage 12: Rear bumper: Rear bumper (Incl. Anbauteile, Chrom erneuern,) - Scratched - Repair and paint



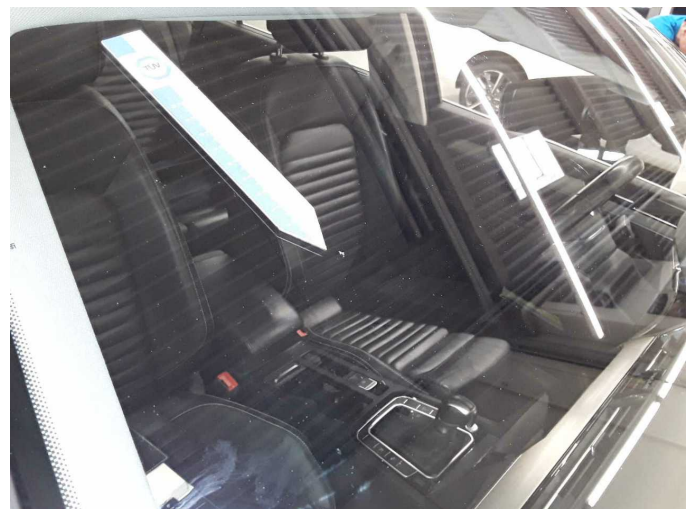
Damage 12: Rear bumper: Rear bumper (Incl. Anbauteile, Chrom erneuern,) - Scratched - Repair and paint



Wear and tear 1: Vehicle glazing: Windscreen - Stone chips - No deduction



Wear and tear 1: Vehicle glazing: Windscreen - Stone chips - No deduction



Wear and tear 1: Vehicle glazing: Windscreen - Stone chips - No deduction



Wear and tear 2: Seat - front: Seat cover - left side - Scratch(es) - No deduction



Wear and tear 2: Seat - front: Seat cover - left side - Scratch(es) - No deduction



Boot lid / rear door: 648 µm



Mudguard - left side: 235 µm



Mudguard - right side: 437 µm



Side panel - rear left side: 1,860 µm



Side panel - rear left side: 1,860 µm



Side panel - rear left side: 1,860 µm



Side panel - rear right side: 466 µm



Door - rear left side: 222 µm



Door - rear right side: 388 µm



Door - front left side: 362 µm



Door - front right side: 283 µm



Wartungshistorie

(gemäß Auftraggeber Informationen)

Fahrgestellnummer: WVVZZZ3CZME077472
Hersteller / Modell: VOLKSWAGEN VOLKSWAGEN Passat Variant 1.4 TSI Plug-In-Hybrid DSG GTE

Datum	KM-Stand	Beschreibung
31.01.2025	48.120	AU
17.01.2025	48.042	Motoröl b. Wartung; Ölfilter ern; Ölwechsel; Wartung Sonstiges
20.12.2023	34.694	Systemtest/Eigendiagnose
24.03.2023	24.465	Bremse Sonstiges; Bremsflüssigkeit; Bremsflüssigkeit ern; Bremsklötze hinten; Bremsscheiben hinten; Motoröl b. Wartung; Ölfilter ern; Regelwartungsdienst; Wartung Sonstiges
12.07.2022	16.894	Motoröl b. Wartung; Ölwechsel