

Expertise

Protocol number: 44892141
Order No. / Reference: 26121020
Inspection date: 9 Apr 2026

Manufacturer: Audi

Model: A4 Avant 35 TDI S tronic S line

VIN: WAUZZZF41PA046000



Vehicle details

Manufacturer / Type / Model / Equipment

Audi A4 Avant 35 TDI S tronic S line

Vehicle Identification number WAUZZZF41PA046000

Mileage (Read) 139,484 km

First registration 2 Mar 2023

Number of holders 1

Power / Engine displacement 120 kw / 1,968 ccm

Fuel type / Cylinder Hybrid Diesel / E / 4

Gearbox / Number of gears Automatic / 7

Type of drive Front drive

Type of vehicle Station wagon

Colour / colour code Ibisweiss (Y9C)

Doors / Seats 5 / 5

Upholstery type Cloth

Colour of upholstery Black-Grey

Vehicle with smoke odor no



Vehicle details

Maintenance booklet / proof	Non-existent	Next maintenance in	5,900 km
Key is / should be	2 / 2	FZG documents	ZB#2 (B) was available (copy), ZB#1 (S) was not available.
		Letter No.	GS358979
Previous damage / Accident	Detectable	Repainting	Detectable
Inspection conditions	sufficient	Lifting equipment / pit	yes
Test drive	Not performed	Engine function test	Performed
Manufacturer key number/ type code number	0588 / BPK 01081		
Emission standard	EURO6;WLTP;AP;PI/CI; M, N1 I	fine dust sticker	
Permitted total weight	2,165 kg	Empty weight	

Tyres

Mounted tyres

#	Tyre size	Type of tyre	Manufacturer	Tread depth
1)	245/40 R18 97V	Winter tyres on Light alloy	Pirelli	8mm / 8mm
2)	245/40 R18 97V	Winter tyres on Light alloy	Pirelli	8mm / 8mm

Additional tyres

#	Tyre size	Type of tyre	Manufacturer	Tread depth
1)	245/40 R18 93H	Summer tyres (Without wheel rim)	Goodyear	3mm / 3mm
2)	245/40 R18 93H	Summer tyres (Without wheel rim)	Goodyear	5mm / 5mm

Replacement

Typ	Tyre size	Type of tyre	Manufacturer	Tread depth
Tirefit		Expiration date 10/2026		

Legend: Tread depth information for the left tire is listed first, for the right tire it is listed second on the axle in the direction of travel.



Equipment

Standard equipment

- AdBlue tank (12 liters) (tank for AdBlue solution for reducing nitrogen oxides in the exhaust gas using an SCR system)
- Accent surfaces in matte black (for dashboard, trim panels in door sills and center console insert)
- Traction control (ASR)
- Audi pre sense city (can detect vehicles and pedestrians within system limits at speeds up to approximately 85 km/h. If an impending collision is detected, the system warns the driver visually, audibly, and, if necessary, with a braking jolt, and can initiate full deceleration if required to reduce speed or, if necessary, avoid the collision.)
- Electrically adjustable and heated exterior mirrors (with integrated LED turn signals, including heated windshield washer nozzles)
- Headliner in fabric (depending on the chosen interior color, either titanium grey or atlas beige)
- Decorative inlays diamond lacquer silver grey
- Diesel particulate filter (DPF)
- Door sill trims with aluminum inlay at the front, illuminated, with S lettering
- Electronic Differential Lock (EDS)
- Electronic Stability Control (ESC)
- Driver Information System (with high-resolution 5" monochrome display - display content: speed, time, mileage, outside temperature, fuel warning with remaining range, gear shift indicator, current radio station or music track, radio and media lists, telephone menu (in conjunction with multifunction steering wheel), navigation information (if equipped). On-board computer with short- and long-term memory - including break recommendation)
- Front and rear floor mats (made of velour in black)
- Cruise control with speed limiter (assists in maintaining a speed of approximately 20 km/h or higher, provided engine and braking power allow. The speed limiter helps to prevent exceeding a speed of approximately 30 km/h. The system limits the speed even when the accelerator pedal is depressed. It is operated via a separate steering column stalk. The set speed is displayed in the driver information system.)
- Interior mirror dimming
- Child lock
- Automatic climate control (single-zone automatic climate control - electronically regulates air temperature, volume and distribution, sun position-dependent control - air distribution can be set using 5 main positions - the 3 LEDs integrated into the seat heating and seat ventilation buttons provide feedback on the selected setting (optional) - buttons for defrosting the front and rear windows - manual recirculation control and particle filter - with key recognition and humidity sensor)
- Airbag for driver and front passenger (with front passenger airbag deactivation)
- Airbag: Front side airbags and head airbag system
- Anti-lock braking system (ABS) (with electronic brake force distribution (EBD) and brake assist)
- Audi connect Emergency Call & Service with Audi connect Remote & Control (Audi connect Emergency Call: - Online breakdown call - Audi damage service - Audi service appointment online - Online Car Care Audi connect Remote & Control: - Parking position - Vehicle status - Remote locking and unlocking - Remote control of auxiliary heating - Anti-theft alarm notification)
- Exterior mirror housings in body color
- On-board tools (in the luggage compartment)
- Brake light, third raised
- S line roof spoiler
- Black roof rails (for transport, stable and aerodynamically shaped, in aluminum)
- Tachometer
- Electromechanical parking brake (includes parking brake function when stationary, starting aid by automatic release when starting and full deceleration while driving via all 4 wheels)
- Chassis: Sport chassis (with firmer spring and damping for more direct road contact and sportier handling, lowered by 23 mm compared to standard chassis, shock absorbers and coil springs on front and rear axles)
- Electric windows (front and rear)
- Window channel strips in black (rubber)
- Remote key, without SafeLock (locks and unlocks doors, luggage compartment and fuel filler flap - including Keyless-Go - including comfort closing/opening of windows)
- Transmission: S tronic 7-speed
- rear window wiper
- Top speed limited to 210 km/h
- Interior lighting (front and rear roof module including reading lights - capacitively operated at the front, ambient light on center console, glove box light, passive door warning lights, trunk light on the left, additionally on the right for the A4 Avant/S4 Avant, and tailgate lighting)
- ISOFIX and Top Tether child seat attachment for the outer rear seats (holding device for the practical attachment of ISOFIX child seats with an additional upper attachment point (Top Tether) on the outer rear seats)
- trunk floor mat
- Headrests (5) (height adjustable front and rear)
- Loading floor (one side in high-quality velour, the other as a waterproof, durable dirt tray)
- Manual cargo cover



- Steering wheel: Leather steering wheel in a 3-spoke design with multifunction controls (height and reach of the steering wheel are manually adjustable. For convenient operation of the extensive standard and optional infotainment features, the steering wheel is equipped with 6 multifunction buttons.)
- Mild hybrid (Mild hybrid features an enhanced start-stop function, extended energy recuperation during braking to charge the starter battery, and additional lithium-ion storage. This allows the system to recover more energy and switch off the engine more frequently. A supplementary belt-driven starter generator (BSG) is conceptually included for mild hybrid systems. Purely electric driving is not possible.)
- Radio accessories: 8 speakers (passive) front and rear
- Radio accessories: Digital radio reception (DAB) (in addition to the analog station offerings, reception of digitally broadcast radio stations according to the DAB standard. Display of program-related information (e.g., artist and title) as well as additional information in the form of a slideshow (e.g., album art and weather). A second DAB tuner with a second DAB antenna continuously searches for alternative reception frequencies of the selected station. The station list is updated simultaneously.)
- Tire repair kit (compressor and tire sealant, maximum permissible speed 80 km/h)
- Electromechanical power steering (maintenance-free rack and pinion steering with speed-dependent steering assistance; precise steering feel at high speeds, excellent support when parking.)
- Seat covers in Index fabric (seat center panels in Index fabric black or rock grey - seat side bolsters, headrests, center armrest in solid black or rock grey fabric)
- Seats: Folding rear seat backrest (split in a 40:20:40 ratio or fully foldable - center armrest - including lashing eyes, 4 in the luggage compartment, for securing luggage and objects - attachment points for the luggage compartment net, with removable partition net; to be attached to the body or to the folded rear seat backrest; helpful whether the rear seat backrest is upright, folded down on one side, or folded down on both sides)
- Glazing: Windscreen in heat-insulating and acoustic glazing (windscreen in heat-insulating glazing, green tinted - improved external noise insulation)
- LED taillights (taillights using LED technology impress with faster activation of the taillights and brake lights, thus enabling earlier detection by following traffic. The light signature is a visible recognition signal to the rear.)
- Steering column, manually height and axially adjustable
- Light/rain sensor (for controlling the automatic headlight switching, the coming home/leaving home function and the automatic windshield wiper function)
- front center armrest
- Non-smoking version (one 12-volt socket each in the front in front of the cup holders and in the rear for the 2nd row of seats - no cigarette lighter)
- Wheel: Low rolling resistance tires, speed-limited (maximum permissible speed 210 km/h)
- Radio: MMI Radio plus (10.1" color display (1,540 × 720) including MMI touch operation - driver information system with 5" mono display - Bluetooth interface (hands-free calling and audio streaming) - Audi music interface with 1 USB-A and 1 USB-C port, each with data and charging function - passive speakers - AM/FM phase diversity - speed-dependent volume adjustment - voice control system with natural language for controlling infotainment and vehicle functions - WLAN hardware)
- Tire pressure monitoring system (visual and audible warning in case of pressure loss in one or more wheels, display in the driver information system)
- Headlights in LED technology (low beam, high beam, daytime running light and position light in LED, turn signal in incandescent bulb technology, with all-weather light - create a daylight-like illumination of the road and impress with low energy consumption, long service life and good visibility to others)
- Seats: Standard front seats (with manual adjustment of seat height, seat longitudinal position, backrest angle, headrest height and seat belt height)
- Seats: Front seats manually adjustable
- Start-stop system (helps reduce fuel consumption and CO2 emissions by switching off the engine during stationary phases, e.g. at traffic lights. For restarting, the starting process is initiated as soon as the foot brake is released. Can be deactivated at any time via a button.)
- First aid kit with warning triangle (warning triangle in the trunk - first aid kit in the trunk - 2 high-visibility vests in the door pockets)
- Electronic immobilizer
- Central locking "Keyless-Go" without safe locking (keyless engine start)

Extra equipment



- Audi connect Navigation & Infotainment (Navigation with Google Satellite Map - Online search for navigation destinations - Online voice input - Online traffic information - Online traffic information plus - Online points of interest - On-street parking - Hazard information - Online traffic sign information - myAudi Navigation - Highly detailed 3D city display - Amazon Alexa integration - Online media streaming - Online radio - Hybrid radio - Weather information - Online news - Wi-Fi hotspot - User profiles)
- MMI Navigation plus with MMI touch (navigation system with 10.1-inch color display, 3D map display, MMI search, MMI touch, online traffic information, online map updates, driver information system with 7-inch display, Audi connect navigation & infotainment, country information, extended 3D city models, detailed route information, personal route assistance, voice control, MMI Radio plus, USB interface, Bluetooth interface (hands-free calling and streaming))
- Telephone: Audi smartphone interface in conjunction with MMI Navigation plus with MMI touch (The Audi smartphone interface (Android Auto and Apple CarPlay) connects your smartphone to your Audi and seamlessly displays your smartphone content directly on the MMI display. Navigation, telephony, music, and selected third-party apps can be conveniently controlled via the MMI touchscreen and voice control. The connection can be established either using a suitable USB cable or wirelessly.)
- Driver information system with color display (high-resolution 7" color display - display content: speed, time, mileage, outside temperature, fuel warning with remaining range, gear shift indicator, current radio station or music track, radio and media lists, telephone menu (in conjunction with multifunction steering wheel), navigation information (if equipped). On-board computer with short- and long-term memory - including break recommendation)
- Paint finish: Solid
- Wheel: Audi new car tire warranty (36-month term from vehicle handover to the first customer)
- Wheel: Light alloy wheels, 10-spoke dynamic design, graphite grey, polished (size 8 JX 18 with tires 245/40 R 18)
- Telephone: Audi Phone Box (features as per Bluetooth interface; additional functions: - inductive charging function (Qi standard) with 5 watts including forget-to-charge warning and charging status display in the MMI - telephone cradle measuring 170 × 87 mm in the front center armrest - hands-free calling with up to 2 connected mobile phones possible including vehicle-internal coupling antenna for connecting the mobile phone to the external antenna, resulting in low radiation in the vehicle interior and significantly improved reception quality; with LTE support)
- Glazing: Sun protection glazing, tinted (rear window, rear door and side windows tinted)

Brief expert findings

Documents submitted	At the time of the inspection, the vehicle registration certificate Part 2 (title) was available, but the vehicle registration certificate Part 1 (document) was not. (Copy)
VIN comparison	The vehicle identification number (VIN) was read from the vehicle and its conformity with the submitted documents was confirmed by the undersigned during the inspection.
Inspection	The inspection conditions were sufficient for the assessment of the vehicle. Lifting equipment and/or a pit were available for examining the vehicle.
Test drive	No test drive/shunting maneuver was carried out during the inspection of the vehicle.
Engine function test	An engine test run was performed.

Value reducing factors

No.	Component group	Description
1	Boot lid / rear door	Boot lid - Glued / labelled - De-glue / neutralise
2	Wheel / tyres	Alloy rim - rear left side - Scratch(es) - Loss in value
3	Side panel - rear left side	Sill - Dent / paintcoat damage - Paint
4	Side panel - rear right side	Sill - Scratch(es) - Paint
5	Sill - left side	Sill - Scratch(es) - Paint
6	Front bumper	Front bumper (+ Spoiler) - Scratch(es) - Paint



Wear and tear

No.	Component group	Description
1	Misc.	Inspection / maintenance - No evidence - No deduction
2	Wheel / tyres	Alloy rim - front right side - Scratch(es) - No deduction
3	Wheel / tyres	Alloy rim - rear right side - Scratch(es) - No deduction

The vehicle shows signs of wear and tear commensurate with its age and use.

Previous damages

No.	Previous damage	Extent of damage (Net)
1	Side right, Provided by user / customer, from 9 Aug 2025	1.597,14 €
2	Side - left, Provided by user / customer, from 16 Jul 2025	1.811,41 €
3	Side right, Provided by user / customer, from 30 Nov 2024	3.550,95 €

Repainting

No.	Repainting
1	Roof rail - right side, Side panel - rear right side, Door - rear right side, Professionally carried out, Invoice of repair done Non-existent

Paint coat thickness measurement

Roof rail - right side	181 µm	Side panel - rear right side	203 µm
Door - rear right side	268 µm		

Order/Scope of Order

An order was placed to prepare a sales report for the described vehicle. This report includes the following:

- Description of key vehicle information
- Documentation of equipment features
(*Delivery by third-party service providers*)
- Documentation of damage, defects, missing parts
- Documentation of prior damage, unrepaired prior damage, repainting
- A brief visual or functional inspection of the equipment details, if possible.
(*Functional testing of driver assistance systems is not included in the scope of services!*)
- a photographic documentation of the vehicle



Basis for the order

This product is based on the guidelines for vehicle returns and valuations published by Alphabet Fleet GmbH. The expert makes the specific findings in each individual case objectively, within the framework of the prescribed standards, based on their own expertise.

The vehicle inspection takes place in a fully assembled, unassembled state.

Damage or defects that can only be detected during disassembly/diagnostic work or through further investigation remain within the realm of prognostic risk. An increased risk exists due to concealed defects caused by fraudulent misrepresentation and which were not identifiable by the expert.

Damage or defects resulting from normal use or wear and tear of the vehicle will be accepted in accordance with the applicable standard.

There was no explicit identification or monetary consideration of the expected features within the product.

Features which, in their nature and extent, slightly exceed normal use but do not constitute unacceptable damage, will be documented and indicated as signs of wear, if applicable.

Damage or defects that, according to the applicable standard, can no longer be attributed to normal use or wear and tear are listed under "Value Reducing Factors" in the product description.

Depending on the product specification, a monetary ID can be provided. If this takes place, the costs can be 100% or pro rata depending on the vehicle's age and mileage.

Previous damages

According to available information previous damages were repaired at the vehicle. Traces of repairs, which allow conclusions about the area of repair, were not recognizable during the inspection.

Comments

Die montierte Winterreifen sind kein Bestandteil der Ausstattung.



Figure 1: Diagonal front (left)



Figure 2: Diagonal front (right)



Figure 3: Diagonal rear (left)



Figure 4: Diagonal rear (right)



Figure 5: Interior - front



Figure 6: Interior - rear



Figure 7: Instrument cluster



Figure 8: Instrument panel



Figure 9: Interior 360° view



Figure 10: Cargo area

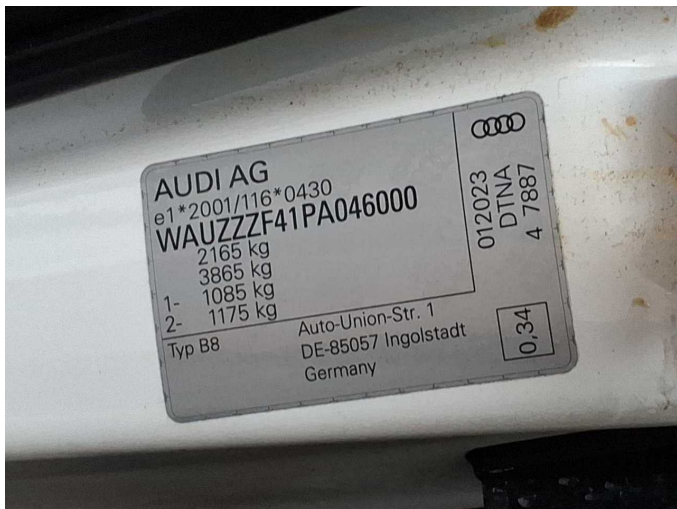


Figure 11: VIN



Figure 12: Mounted tyres

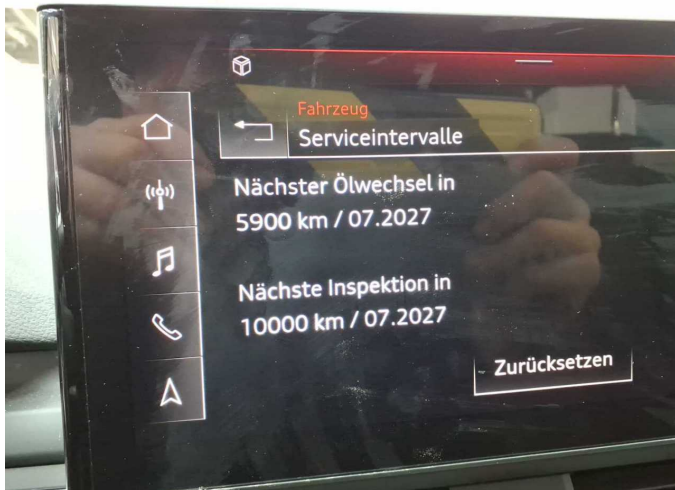


Figure 13: Documents

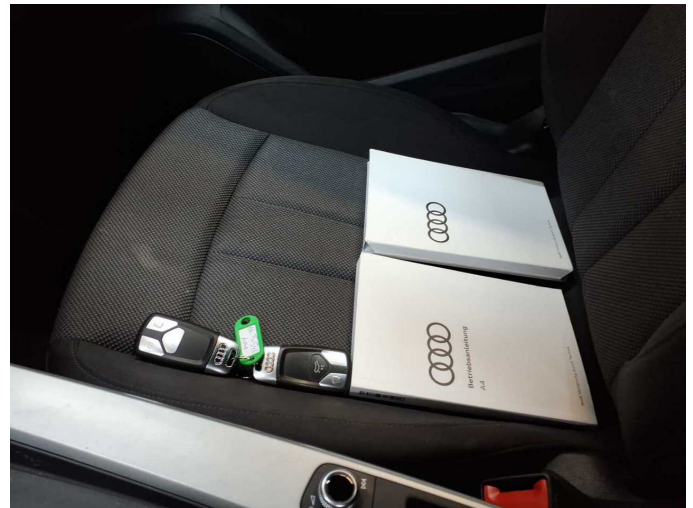


Figure 14: Documents



Figure 15: Additional tyres



Figure 16: Navigation



Figure 17: Misc.



Figure 18: Misc.



Figure 19: Misc.



Figure 20: Misc.



Figure 21: Misc.



Figure 22: Misc.



Figure 23: Misc.



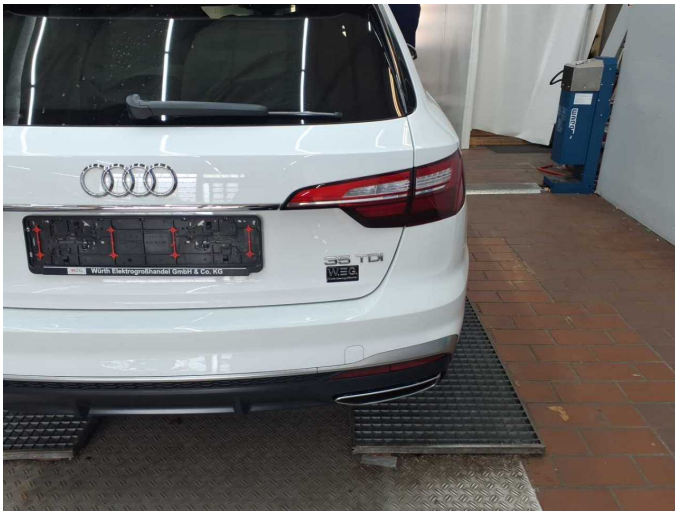
Figure 24: Misc.



Figure 25: Misc.



Figure 26: Misc.



Damage 1: Boot lid / rear door: Boot lid - Glued / labelled - De-glue / neutralise



Damage 1: Boot lid / rear door: Boot lid - Glued / labelled - De-glue / neutralise



Damage 2: Wheel / tyres: Alloy rim - rear left side - Scratch(es) - Loss in value



Damage 2: Wheel / tyres: Alloy rim - rear left side - Scratch(es) - Loss in value



Damage 3: Side panel - rear left side: Sill - Dent / paintcoat damage - Paint



Damage 3: Side panel - rear left side: Sill - Dent / paintcoat damage - Paint



Damage 3: Side panel - rear left side: Sill - Dent / paintcoat damage - Paint



Damage 4: Side panel - rear right side: Sill - Scratch(es) - Paint



Damage 4: Side panel - rear right side: Sill - Scratch(es) - Paint



Damage 4: Side panel - rear right side: Sill - Scratch(es) - Paint



Damage 5: Sill - left side: Sill - Scratch(es) - Paint



Damage 5: Sill - left side: Sill - Scratch(es) - Paint



Damage 6: Front bumper: Front bumper (+ Spoiler) - Scratch(es) - Paint



Damage 6: Front bumper: Front bumper (+ Spoiler) - Scratch(es) - Paint



Damage 6: Front bumper: Front bumper (+ Spoiler) - Scratch(es) - Paint



Damage 6: Front bumper: Front bumper (+ Spoiler) - Scratch(es) - Paint



Repainting 1: Roof rail - right side, Side panel - rear right side, Door - rear right side



Repainting 1: Roof rail - right side, Side panel - rear right side, Door - rear right side



Repainting 1: Roof rail - right side, Side panel - rear right side, Door - rear right side



Repainting 1: Roof rail - right side, Side panel - rear right side, Door - rear right side



Repainting 1: Roof rail - right side, Side panel - rear right side, Door - rear right side



Repainting 1: Roof rail - right side, Side panel - rear right side, Door - rear right side