

Expertise

Protocol number: 46318184
Order No. / Reference: 26600800
Inspection date: 3 Jul 2026

Manufacturer: Peugeot

Model: 5008 BlueHDi 130 Roadtrip

VIN: VF3MCYHZMNS064653



Vehicle details

Manufacturer / Type / Model / Equipment

Peugeot 5008 BlueHDi 130 Roadtrip

Vehicle Identification number VF3MCYHZMNS064653

Mileage (Read) 60,522 km

First registration 31 May 2022

Number of holders 1

Power / Engine displacement 96 kw / 1,499 ccm

Fuel type / Cylinder Diesel / 4

Gearbox / Number of gears Manual / 6

Type of drive Front drive

Type of vehicle SUV

Colour / colour code Artense Silber Metallic

Doors / Seats 5 / 7

Upholstery type Cloth / leather combination

Colour of upholstery Black-Anthracite



Vehicle details

Maintenance booklet / proof	digital proof / complete	Next maintenance in	25,300 km
Last service on / at	08/2025 at 55,841 km		
Key is / should be	2 / 2	FZG documents	ZB#2 (B) was available (copy), ZB#1 (S) was not available.
		Letter No.	GA858363
Previous damage / Accident	None detectable	Repainting	Detectable
Inspection conditions	sufficient	Lifting equipment / pit	yes
Test drive	Not performed	Engine function test	Performed
Manufacturer key number/ type code number	3003 / AZJ 00231		
Emission standard	EURO6;WLTP;AP;PI/CI; M, N1 I	fine dust sticker	
Permitted total weight	2,200 kg	Empty weight	

Tyres

Mounted tyres

#	Tyre size	Type of tyre	Manufacturer	Tread depth
1)	225/55 R18 102V	Summer tyres on Light alloy	Michelin	4mm / 4mm
2)	225/55 R18 102V	Summer tyres on Light alloy	Michelin	4mm / 4mm

Additional tyres

#	Tyre size	Type of tyre	Manufacturer	Tread depth
1)	215/65 R17 99H	Winter tyres on Light alloy	Continental	6mm / 6mm
2)	215/65 R17 99H	Winter tyres on Light alloy	Continental	6mm / 6mm

Replacement

Typ	Tyre size	Type of tyre	Manufacturer	Tread depth
	Tirefit	Expiration date 02/2027		

Legend: Tread depth information for the left tire is listed first, for the right tire it is listed second on the axle in the direction of travel.

TÜV SÜD Auto Partner GmbH
Wiesenring 2
04159 Leipzig

Inspection location
Hartmann Compound Professionals
Arnoldschacht 9-11
44894 Bochum



Equipment



Standard equipment

- ABS (Anti-lock Braking System)
- Airbags (6)
- Electrically folding exterior mirrors with LED approach lighting
- Hill start assist
- Chrome trim strips on the lower part of the doors
- Black Diamond roof (roof in Perla Nera black)
- Ceiling light - LED at the front, in row 2 and in row 3, 2 LED reading lights at the front, in row 2 and in row 3
- Decorative trim on the dashboard and door panels in satin chrome
- Tachometer
- Rear parking aid, acoustic and visual
- ESP (Electronic Stability Program) with ASR (Anti-Slip Regulation)
- High beam assist
- Follow-me-home function (automatic)
- Front bumper in chrome look
- Cruise control system with speed limiter
- Cup holder in the center console
- Heated rear window
- Rear spoiler, glossy black
- Map pockets on the front seatbacks
- Child safety locks on the rear doors
- Automatic climate control (2-zone), with activated carbon filter
- Chrome-plated loading sill protector
- Blue LED lighting on the door panel
- LED headlights (Eco)
- Steering wheel: Multifunction leather steering wheel
- Steering wheel: small multifunction steering wheel, flattened at the top and bottom
- makeup mirror
- Fatigue warning
- Navigation system: 3D navigation system NAC
- Emergency brake assist
- Particulate filter: FAP diesel particulate filter
- Peugeot Connect Box
- Radio: RCC audio system
- Radio accessories: Digital radio reception DAB+
- Rain sensor
- Tire pressure monitoring system
- Wheels: Tire repair kit (compressor + tire sealant spray)
- Disc brakes all around, internally ventilated at the front.
- The word "Roadtrip" is printed on the B-pillars.
- Electric power steering
- Seats: 2 additional seats for the 3rd row
- Seats: Passenger seat height adjustable
- Seats: Driver's seat height adjustable
- Lane keeping assist with steering intervention
- Stop&Start system
- Tie-down points in the trunk (4 pieces)
- Central locking system, activatable from inside via remote control
- Active Safety Brake and Front Collision Warning
- Active Blind Spot Assist
- Electrically adjustable and heated exterior mirrors with integrated LED turn signals
- On-board computer
- Chrome trim strips above the side windows
- Aluminum roof rails
- "Brumeo" fabric decorative inserts for door panels and dashboard
- Digital instrument cluster with high-resolution 12.3" screen, adjustable and customizable
- EBV (Electronic Brakeforce Distribution)
- Front parking aid, acoustic and visual
- Misfueling protection
- Electric windows front and rear
- electric parking brake
- Front collision warning
- "Roadtrip" floor mats, front and rear
- Transmission: 6-speed manual transmission
- Seat belts: 3-point safety belts
- rear window wiper
- Interior mirror automatically dimming
- Keyless system
- Folding tables on the front seat backrests
- Front headrests (2)
- Rear headrests (3)
- White LED ambient lighting in the front footwell
- LED taillights with 3D effect
- LED daytime running lights and LED turn signals at the front
- light sensor
- "Roadtrip" logo on the fenders
- Front center armrest, two-piece, with storage compartment, illuminated and climate-controlled
- Fog light
- Package: Children's Package
- Aluminum pedals and stainless steel door sills
- Upholstery: Fabric/faux leather/Alcantara "Casual" in black
- Radio: Mirror Screen
- Radio accessories: Multifunctional touchscreen with 10" HD color display
- Wheels: 18" "Detroit" alloy wheels, two-tone with grey
- Reversing camera with 180° surround view
- Keyless start system
- Side windows in the second row and rear window are more heavily tinted.
- Seats: 3 separate individual seats in row 2
- Seats: Passenger seat foldable
- Seats: Manual lumbar support, for driver's seat
- Socket (3) 12 Volt
- Traffic sign recognition
- Immobiliser



Extra equipment

- Automatic Cruise Control (ACC)
- Paint finish: Special metallic paint
- luggage compartment partition net
- Seats: Heated front seats

Brief expert findings

Documents submitted	At the time of the inspection, the vehicle registration certificate Part 2 (title) was available, but the vehicle registration certificate Part 1 (document) was not. (Copy)
VIN comparison	The vehicle identification number (VIN) was read from the vehicle and its conformity with the submitted documents was confirmed by the undersigned during the inspection.
Inspection	The inspection conditions were sufficient for the assessment of the vehicle. Lifting equipment and/or a pit were available for examining the vehicle.
Test drive	No test drive/shunting maneuver was carried out during the inspection of the vehicle.
Engine function test	An engine test run was performed.

Value reducing factors

No.	Component group	Description
1	Door - rear left side	Door - dent(s) - Smooth repair work
2	Side panel - rear right side	Side panel - dent(s) - Smooth repair work
3	Engine	Engine - Leaking - Diagnosed and repair if necessary
4	Wheel / tyres	Alloy rim - front right side - Scratched - Loss in value
5	Door - front right side	Door - Scratch(es) - Paint
6	Door - rear right side	Door - Dent / paintcoat damage - Repair and paint

Wear and tear

No.	Component group	Description
1	Vehicle glazing	Windscreen - Stone chips - No deduction
2	Bonnet	Bonnet - Stone chips - No deduction
3	Front bumper	Front bumper - Stone chips - No deduction

The vehicle shows signs of wear and tear commensurate with its age and use.

Repainting

No. Repainting

- 1 Door - rear left side, Door - front left side, Professionally carried out, Invoice of repair done Non-existent

Order/Scope of Order

An order was placed to prepare a sales report for the described vehicle. This report includes the following:

- Description of key vehicle information
- Documentation of equipment features
(*Delivery by third-party service providers*)
- Documentation of damage, defects, missing parts
- Documentation of prior damage, unrepaired prior damage, repainting
- A brief visual or functional inspection of the equipment details, if possible.
(*Functional testing of driver assistance systems is not included in the scope of services!*)
- a photographic documentation of the vehicle



Basis for the order

This product is based on the guidelines for vehicle returns and valuations published by Alphabet Fleet GmbH. The expert makes the specific findings in each individual case objectively, within the framework of the prescribed standards, based on their own expertise.

The vehicle inspection takes place in a fully assembled, unassembled state.

Damage or defects that can only be detected during disassembly/diagnostic work or through further investigation remain within the realm of prognostic risk. An increased risk exists due to concealed defects caused by fraudulent misrepresentation and which were not identifiable by the expert.

Damage or defects resulting from normal use or wear and tear of the vehicle will be accepted in accordance with the applicable standard.

There was no explicit identification or monetary consideration of the expected features within the product.

Features which, in their nature and extent, slightly exceed normal use but do not constitute unacceptable damage, will be documented and indicated as signs of wear, if applicable.

Damage or defects that, according to the applicable standard, can no longer be attributed to normal use or wear and tear are listed under "Value Reducing Factors" in the product description.

Depending on the product specification, a monetary ID can be provided. If this takes place, the costs can be 100% d or pro rata depending on the vehicle's age and mileage.

Previous damages

No apparent prior damage that had been repaired could be found on the vehicle.

Comments

Wartungshistorie gemäß Auftraggeber Informationen.

- Winterradsatz ist kein Bestandteil des Auslieferungsumfangs.



Figure 1: Diagonal front (left)



Figure 2: Diagonal front (right)



Figure 3: Diagonal rear (left)



Figure 4: Diagonal rear (right)



Figure 5: Interior - front

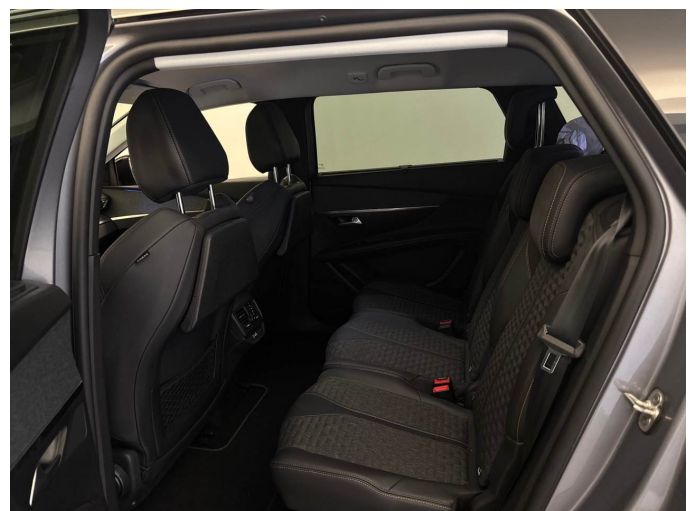


Figure 6: Interior - rear



Figure 7: Instrument cluster



Figure 8: Instrument panel

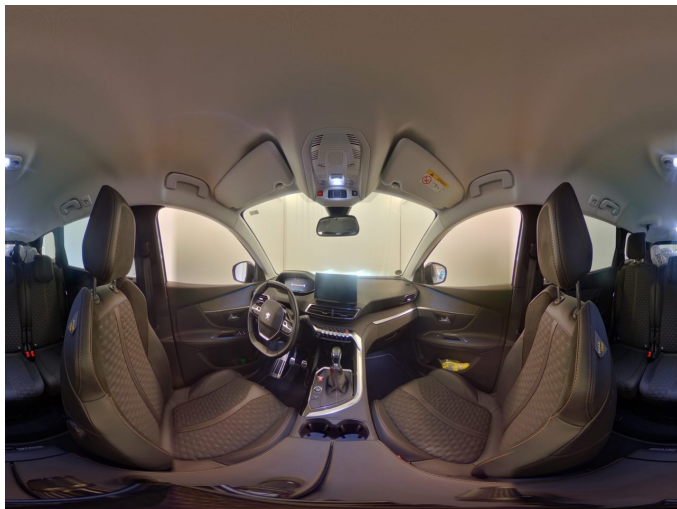


Figure 9: Interior 360° view



Figure 10: Cargo area

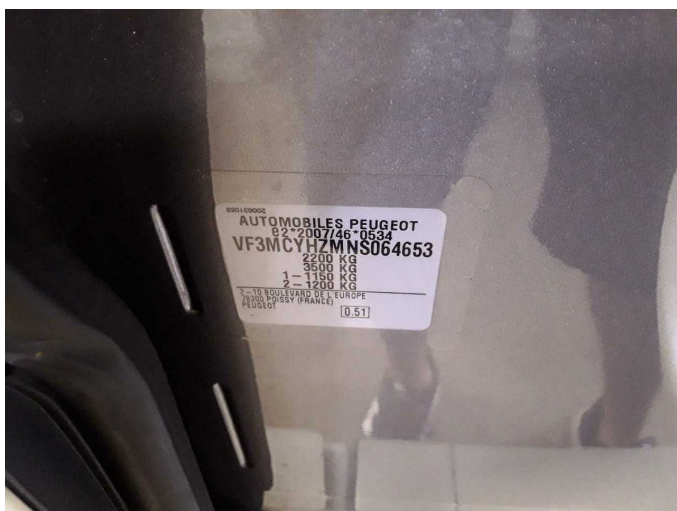


Figure 11: VIN



Figure 12: Mounted tyres



Figure 13: Documents

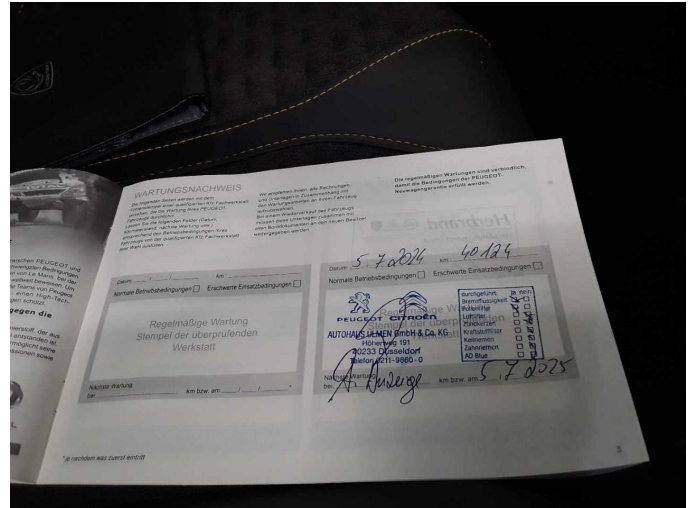


Figure 14: Documents

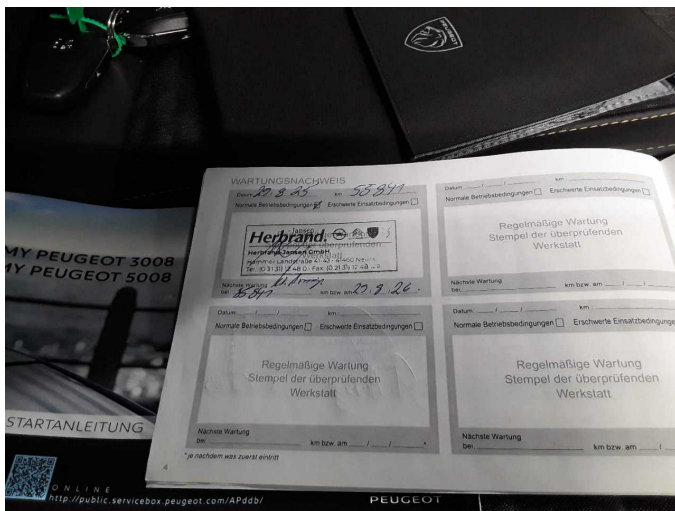


Figure 15: Documents



Figure 16: Additional tyres



Figure 17: Navigation



Figure 18: Misc.



Figure 19: Misc.



Figure 20: Misc.



Figure 21: Misc.



Figure 22: Misc.

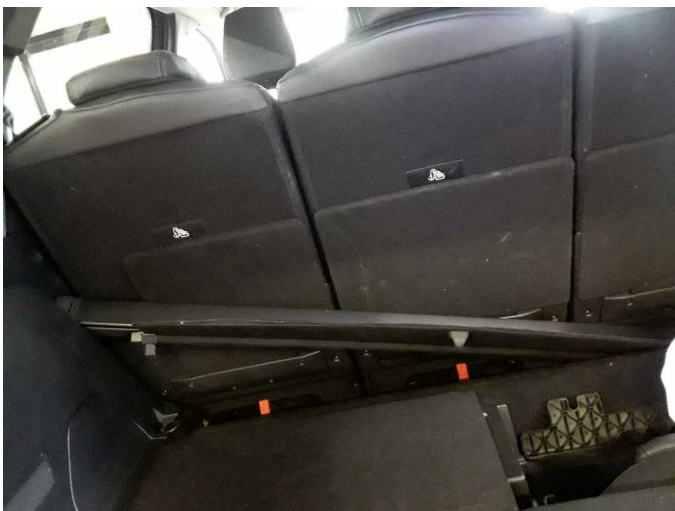


Figure 23: Misc.

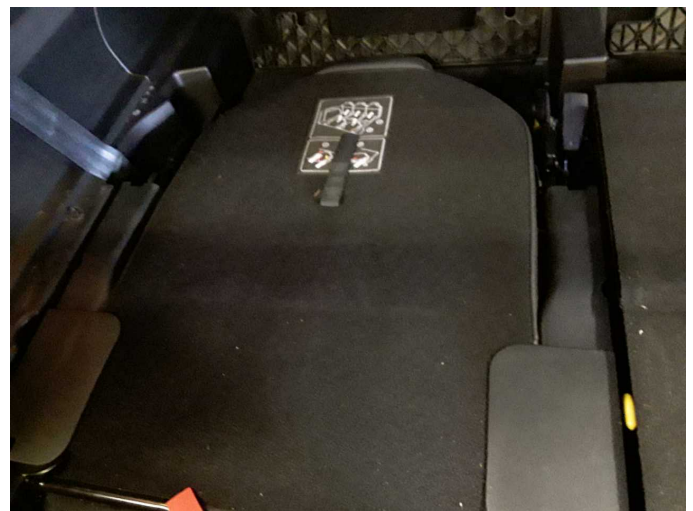


Figure 24: Misc.



Figure 25: Misc.



Figure 26: Misc.



Figure 27: Misc.



Figure 28: Misc.



Figure 29: Misc.



Figure 30: Misc.



Figure 31: Misc.



Figure 32: Misc.



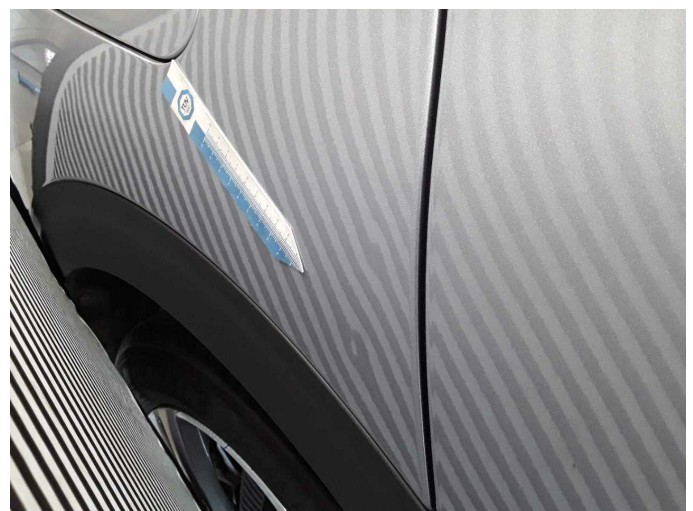
Damage 1: Door - rear left side: Door - dent(s) - Smooth repair work



Damage 1: Door - rear left side: Door - dent(s) - Smooth repair work



Damage 2: Side panel - rear right side: Side panel - dent(s) - Smooth repair work



Damage 2: Side panel - rear right side: Side panel - dent(s) - Smooth repair work



Damage 2: Side panel - rear right side: Side panel - dent(s) - Smooth repair work



Damage 3: Engine: Engine - Leaking - Diagnosed and repair if necessary



Damage 4: Wheel / tyres: Alloy rim - front right side - Scratched - Loss in value



Damage 4: Wheel / tyres: Alloy rim - front right side - Scratched - Loss in value



Damage 4: Wheel / tyres: Alloy rim - front right side - Scratched - Loss in value



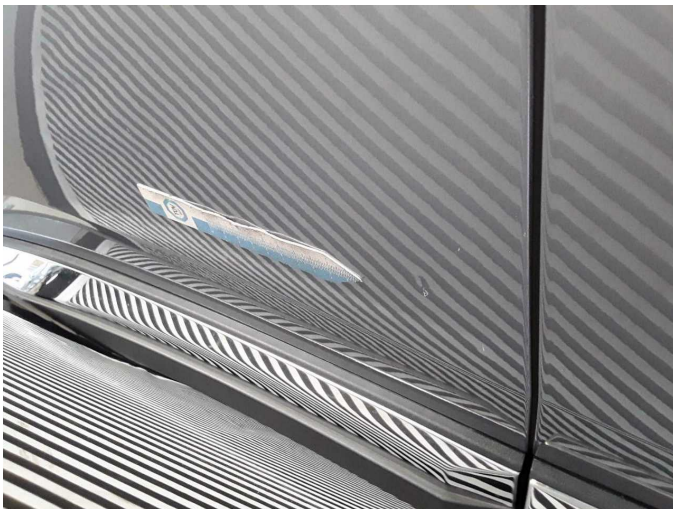
Damage 5: Door - front right side: Door - Scratch(es) - Paint



Damage 5: Door - front right side: Door - Scratch(es) - Paint



Damage 6: Door - rear right side: Door - Dent / paintcoat damage - Repair and paint



Damage 6: Door - rear right side: Door - Dent / paintcoat damage - Repair and paint



Repainting 1: Door - rear left side, Door - front left side



Repainting 1: Door - rear left side, Door - front left side



Repainting 1: Door - rear left side, Door - front left side



Repainting 1: Door - rear left side, Door - front left side



Wartungshistorie

(gemäß Auftraggeber Informationen)

Fahrgestellnummer: VF3MCYHZMNS064653

Hersteller / Modell: PEUGEOT PEUGEOT 5008 BlueHDi 130 Roadtrip

Datum	KM-Stand	Beschreibung
29.08.2025	55.841	Kraftstofffilter ern; Luftfiltereinsatz ern; Motoröl b. Wartung; Ölfilter ern; Regelwartungsdienst; Wartung Sonstiges
21.05.2025	0	HU + AU
05.07.2024	40.124	Bremsflüssigkeit; Bremsflüssigkeit ern; Motoröl b. Wartung; Ölfilter ern; Regelwartungsdienst; Wartung Sonstiges
03.07.2023	25.874	Motoröl b. Wartung; Regelwartungsdienst