

Expertise

Protocol number: 46156461
Order No. / Reference: 26475726
Inspection date: 19 Jun 2026

Manufacturer: Ford

Model: Transit Connect 230 L1 LKW Trend

VIN: WF06XXWPG6NU65489



Vehicle details

Manufacturer / Type / Model / Equipment

Ford Transit Connect 230 L1 LKW Trend

Vehicle Identification number WF06XXWPG6NU65489

Mileage (Read) 182,996 km

First registration 5 Sept 2022

Number of holders 1

Power / Engine displacement 88 kw / 1,499 ccm

Fuel type / Cylinder Diesel / 4

Gearbox / Number of gears Manual / 6

Type of drive Front drive

Type of vehicle Van

Colour / colour code Frost-Weiß

Doors / Seats 5 / 5

Upholstery type Cloth

Colour of upholstery Black



Vehicle details

Maintenance booklet / proof	Available / incomplete	Next maintenance in	0 %
Last service on / at	04/2025 at 148,720 km		
Key is / should be	2 / 2	FZG documents	ZB#2 (B) was available (copy), ZB#1 (S) was not available.
		Letter No.	GK846938
Previous damage / Accident	None detectable	Repainting	Detectable
Inspection conditions	sufficient	Lifting equipment / pit	No
Test drive	Not performed	Engine function test	Performed
Manufacturer key number/ type code number	8566 / BMN 02590		
Emission standard	EURO6;WLTP;AQ;PI/CI; N1 II	fine dust sticker	
Permitted total weight	2,300 kg	Empty weight	

Tyres

Mounted tyres

#	Tyre size	Type of tyre	Manufacturer	Tread depth
1)	205/60 R16 96H	Winter tyres on Light alloy	Pirelli	3mm / 3mm
2)	205/60 R16 96H	Winter tyres on Light alloy	Pirelli	5mm / 5mm

Additional tyres

#	Tyre size	Type of tyre	Manufacturer	Tread depth
1)	205/60 R16 96H	Summer tyres on Steel	Continental	4mm / 4mm
2)	205/60 R16 96H	Summer tyres on Steel	Continental	6mm / 6mm

Replacement

Typ	Tyre size	Type of tyre	Manufacturer	Tread depth
E	205/60 R16 96H	Summer tyres on Steel	Continental	6 mm

Legend: Tread depth information for the left tire is listed first, for the right tire it is listed second on the axle in the direction of travel.



Equipment

Standard equipment

- ABS with EBD
- Exterior mirrors, electrically adjustable and heated
- Exterior mirror housing black
- Hill start assist
- On-board computer including outside temperature display
- Double rear doors with window
- Third brake light
- Fixed rear windows, right and left (at the height of the 3rd row of seats)
- Front electric windows
- FordPass Connect
- Warranty: 2-year Ford new car warranty including Ford Assistance mobility guarantee
- Glove compartment with lid
- Rear window wiper/washer system
- Front air conditioning including semi-electronic recirculation system
- Alternator/Generator
- Fog light
- Wheels: Steel wheels 6.5 J x 16 with 205/60 R 16 tires and wheel trims
- Electro-mechanical power steering
- Front seat belts are height-adjustable
- Seats for passenger compartment: 2nd row of seats
- Front spoiler lip
- Dust and pollen filter
- Power outlet: 12-volt connection on the center console, front and rear
- Daytime running light
- Child safety lock on sliding doors
- Lashing eyes
- Electronic immobilizer (EPATS)
- Central locking with remote control

Extra equipment

- Airbag: Front airbag for passenger (front airbag for passenger including deactivation function and glove compartment with lid)
- DPF regenerator, manual
- Front and rear parking pilot system
- Rubberized flooring, 1st and 2nd row
- Spare wheel: Steel wheel

- Driver's side airbag
- Exterior mirrors, narrow mirror format
- Battery, reinforced
- Floor covering: Carpet (1st and 2nd row)
- Diesel particulate filter (DPF)
- Tachometer
- Electronic Safety and Stability Program (ESP)
- Rear electric windows, right and left (at the height of the 2nd row of seats)
- Ford Easy Fuel
- Heated windshield
- Rubberized luggage compartment floor mat
- Transmission: 6-speed transmission
- Heated rear windows
- Front interior lighting with delay function
- Paint finish: Solid
- Steering column, adjustable in height and reach
- Center console, front
- Emergency brake light
- Sliding door, right and left
- Side protection strips, plastic
- Safety brake assist
- Automatic door locking mechanism (45 sec.)
- Seats: Seat package 45
- Start-stop system
- Concealed storage compartment
- Front bumper and rear bumper end caps painted in body color
- Partition wall: Grid partition wall
- Door handles, black
- Warning system for unfastened seat belts
- Heat-insulating glazing, lightly tinted
- Auxiliary electric heater (PTC), front

- Fixed towbar (incl. ESP trailer stabilization and continuous power supply)
- Package: Smoker (cigarette lighter and ashtray)
- Radio: Ford Audio System 154 (4.2" monochrome display (10.7 cm screen diagonal) - DAB/DAB+ radio, 1 USB port - 4 front speakers - Bluetooth hands-free system and audio streaming - Emergency call assistant - Phase diversity antenna - Audio remote control on the steering wheel)



Brief expert findings

Documents submitted	At the time of the inspection, the vehicle registration certificate Part 2 (title) was available, but the vehicle registration certificate Part 1 (document) was not. (Copy)
VIN comparison	The vehicle identification number (VIN) was read from the vehicle and its conformity with the submitted documents was confirmed by the undersigned during the inspection.
Inspection	The inspection conditions were sufficient for the assessment of the vehicle. No lifting equipment or pit was available for inspecting the vehicle. Therefore, inspection of the vehicle's underside was only possible to a limited extent.
Test drive	No test drive/shunting maneuver was carried out during the inspection of the vehicle.
Engine function test	An engine test run was performed.

Value reducing factors

No.	Component group	Description
1	Instrument panel	Interior mirror - Loose - Un- / install
2	Misc.	Inspection / maintenance - Expired - Perform

Wear and tear

No.	Component group	Description
1	Interior	Interior - Scratch(es) - No deduction
2	Bonnet	Bonnet - Stone chips - No deduction
3	Vehicle glazing	Windscreen - Stone chips - No deduction
4	Interior	Cargo area floor - Scratch(es) - No deduction
5	Front bumper	Front bumper - Stone chips - No deduction
6	Rear bumper	Rear bumper (unpainted) - Scratch(es) - No deduction

The vehicle shows signs of wear and tear commensurate with its age and use.

Repainting

No.	Repainting
1	Mudguard - left side
2	Bonnet

Paint coat thickness measurement

Mudguard - left side	138 µm	Bonnet	201 µm
----------------------	--------	--------	--------

Order/Scope of Order

An order was placed to prepare a sales report for the described vehicle. This report includes the following:

- Description of key vehicle information
- Documentation of equipment features
(*Delivery by third-party service providers*)
- Documentation of damage, defects, missing parts
- Documentation of prior damage, unrepaired prior damage, repainting
- A brief visual or functional inspection of the equipment details, if possible.
(*Functional testing of driver assistance systems is not included in the scope of services!*)
- a photographic documentation of the vehicle



Basis for the order

This product is based on the guidelines for vehicle returns and valuations of light commercial vehicles published by Alphabet Fleet Management GmbH. The expert makes the specific findings in each individual case objectively, within the framework of the prescribed standards, based on their own expertise.

The vehicle inspection takes place in a fully assembled, unassembled state.

Damage or defects that can only be detected during disassembly/diagnostic work or through further investigation remain within the realm of prognostic risk. An increased risk exists due to concealed defects caused by fraudulent misrepresentation and which were not identifiable by the expert.

Damage or defects resulting from normal use or wear and tear of the vehicle will be accepted in accordance with the applicable standard.

There was no explicit identification or monetary consideration of the expected features within the product.

Features which, in their nature and extent, slightly exceed normal use but do not constitute unacceptable damage, will be documented and indicated as signs of wear, if applicable.

Damage or defects that, according to the applicable standard, can no longer be attributed to normal use or wear and tear are listed under "Value Reducing Factors" in the product description.

Depending on the product specification, a monetary ID can be provided. If this takes place, the costs can be 100% d or pro rata depending on the vehicle's age and mileage.

Previous damages

No apparent prior damage that had been repaired could be found on the vehicle.

Comments

- Die Unterbodenbesichtigung war nur ebenerdig & eingeschränkt möglich. Mehrkosten möglich.
- Winterradsatz ist kein Bestandteil des Auslieferungsumfangs.



Figure 1: Diagonal front (left)



Figure 2: Diagonal front (right)



Figure 3: Diagonal rear (left)



Figure 4: Diagonal rear (right)

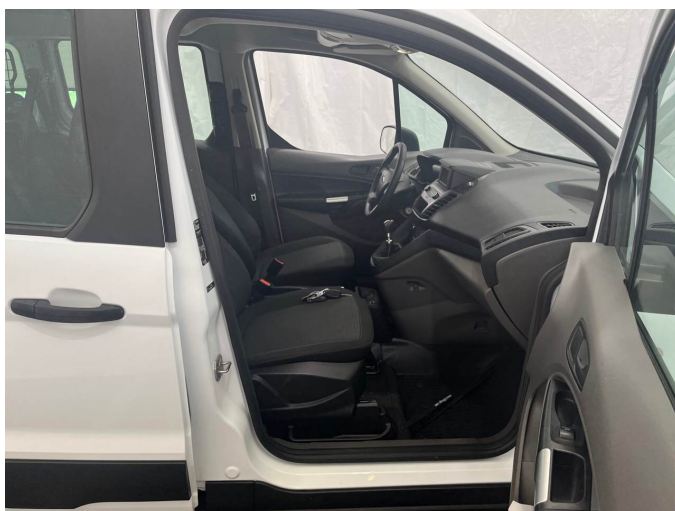


Figure 5: Interior - front



Figure 6: Interior - rear



Figure 7: Instrument cluster



Figure 8: Instrument panel



Figure 9: Interior 360° view



Figure 10: Cargo area



Figure 11: VIN



Figure 12: Mounted tyres



Figure 19: Navigation



Figure 20: Misc.



Figure 21: Misc.



Figure 22: Misc.



Figure 23: Misc.

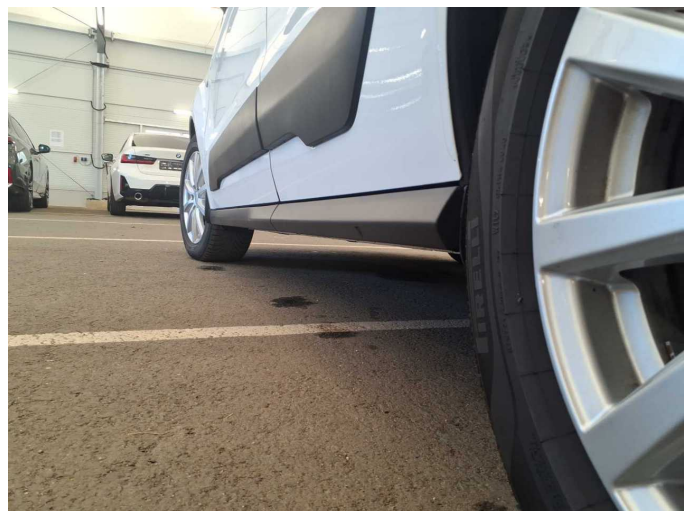


Figure 24: Misc.



Figure 25: Misc.



Figure 26: Misc.

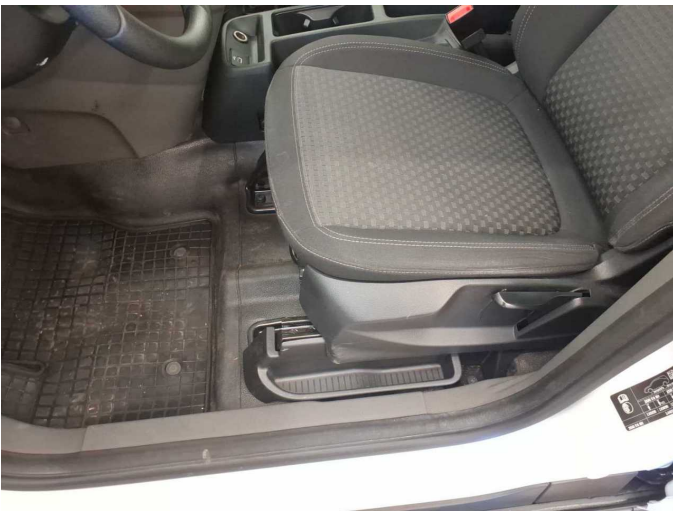


Figure 27: Misc.

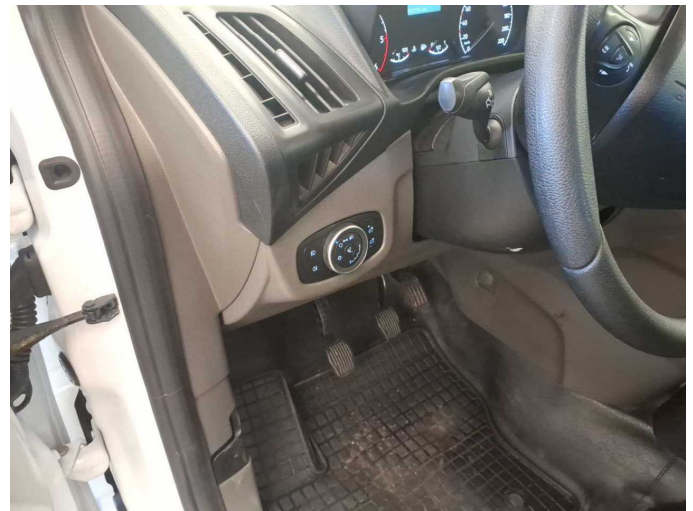


Figure 28: Misc.



Figure 29: Misc.



Figure 30: Misc.



Figure 31: Misc.



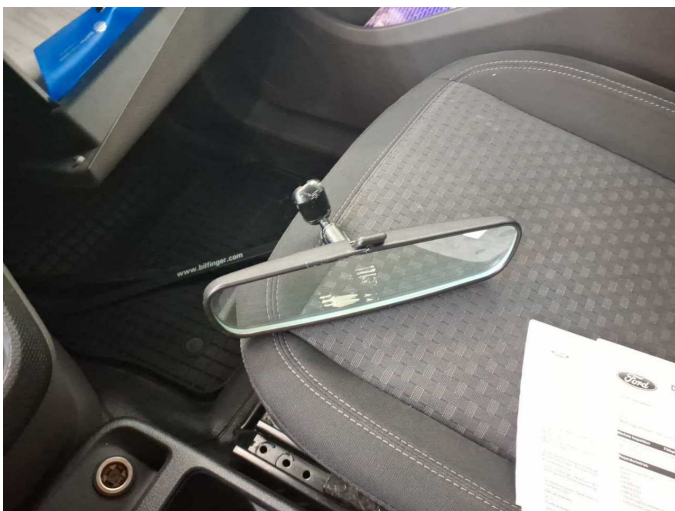
Figure 32: Misc.



Figure 33: Misc.



Figure 34: Misc.



Damage 1: Instrument panel: Interior mirror - Loose - Un- / install



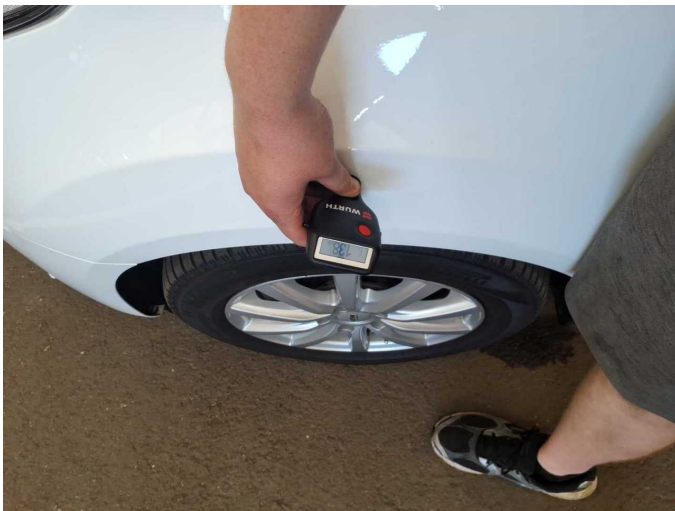
Damage 1: Instrument panel: Interior mirror - Loose - Un- / install



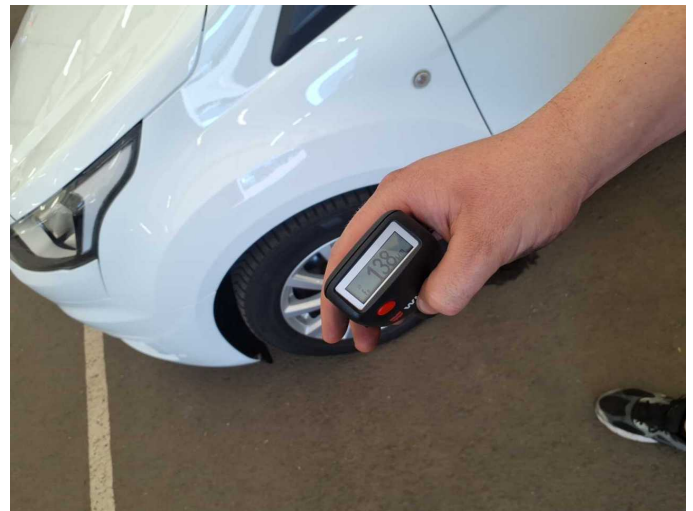
Damage 1: Instrument panel: Interior mirror - Loose - Un- / install



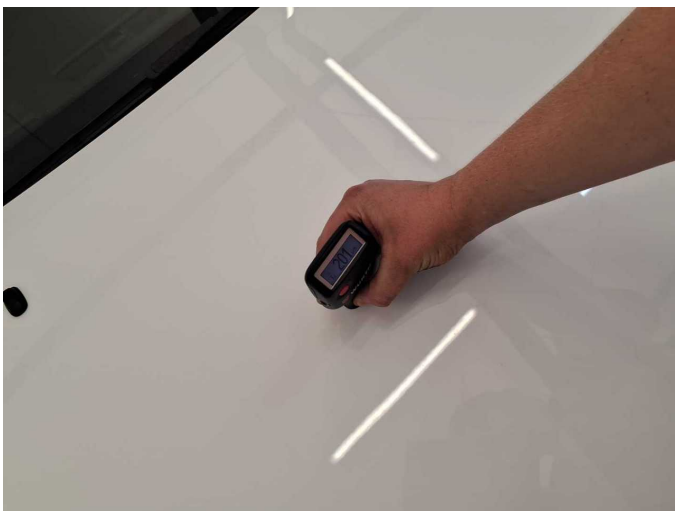
Damage 2: Misc.: Inspection / maintenance - Expired - Perform



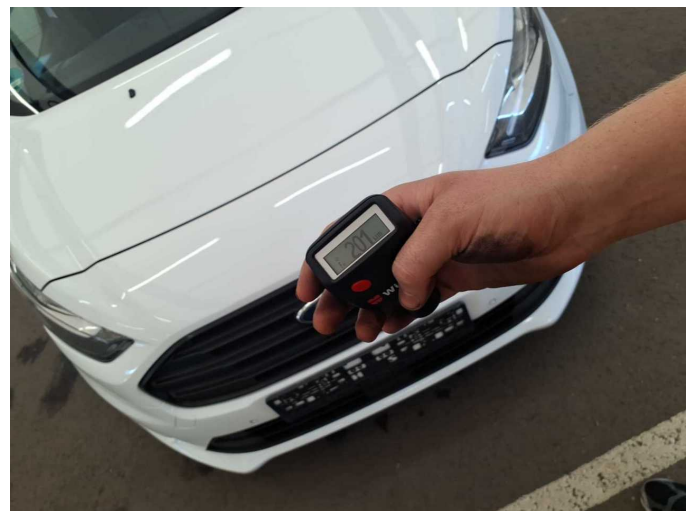
Repainting 1: Mudguard - left side



Repainting 1: Mudguard - left side



Repainting 2: Bonnet



Repainting 2: Bonnet



Wartungshistorie

(gemäß Auftraggeber Informationen)

Fahrgestellnummer: WF06XXWPG6NU65489
Hersteller / Modell: FORD FORD Transit Connect 230 L1 LKW Trend

Datum	KM-Stand	Beschreibung
02.04.2025	148.720	Bremsflüssigkeit; Bremsflüssigkeit ern; Motoröl b. Wartung; Ölfilter ern; Regelwartungsdienst; Wartung Sonstiges
22.08.2024	118.274	AU; Bremse Sonstiges; Bremsklötze hinten; Bremsklötze vorne; Bremsscheiben + Klötze h; Bremsscheiben hinten; Kraftstofffilter ern; Luftfiltereinsatz ern; Motoröl b. Wartung; Ölfilter ern; Regelwartungsdienst; Wartung Sonstiges
26.01.2024	87.960	Motoröl b. Wartung; Regelwartungsdienst
11.09.2023	58.502	Kraftstofffilter ern; Luftfiltereinsatz ern; Motoröl b. Wartung; Regelwartungsdienst
05.04.2023	32.520	Motoröl b. Wartung; Regelwartungsdienst