

Expertise

Protocol number: 45811084
Order No. / Reference: 26549353
Inspection date: 8 Jun 2026

Manufacturer: Audi

Model: A6 allroad quattro 40 TDI S tronic

VIN: WAUZZZF26PN009788



Vehicle details

Manufacturer / Type / Model / Equipment

Audi A6 allroad quattro 40 TDI S tronic

Vehicle Identification number WAUZZZF26PN009788

Mileage (Read) 112,368 km

First registration 9 Nov 2022

Number of holders 1

Next periodical technical inspection 11/2027

(Report on hand)

Power / Engine displacement 150 kw / 1,968 ccm

Fuel type / Cylinder Hybrid Diesel / E / 4

Gearbox / Number of gears Automatic / 7

Type of drive All-wheel drive

Type of vehicle Station wagon

Colour / colour code Firmamentblau-metallic (X5B)

Doors / Seats 5 / 5

Upholstery type Cloth / leather combination

Colour of upholstery Grey-Black

Vehicle with smoke odor no



Vehicle details

| | | | |
|------------------------------------------------------|-------------------------------------|--------------------------------|------------------------------------------------------------|
| Maintenance booklet / proof | digital proof / complete | Next maintenance in | 4,900 km |
| Last service on / at | 06/2025 at 87,252 km | | |
| Key is / should be | 2 / 2 | FZG documents | ZB#2 (B) was available (copy), ZB#1 (S) was not available. |
| | | Letter No. | GM719551 |
| Previous damage / Accident | Detectable | Repainting | Detectable |
| Inspection conditions | sufficient | Lifting equipment / pit | yes |
| Test drive | short drive on the company premises | Engine function test | Performed |
| Manufacturer key number/ type code number | 0588 / BWC 00196 | | |
| Emission standard | EURO6;WLTP;AP;PI/CI; M, N1 I | fine dust sticker | |
| Permitted total weight | 2,500 kg | Empty weight | |

Tyres

| Mounted tyres | | | | |
|---------------|-----------------|-----------------------------|--------------|-------------|
| # | Tyre size | Type of tyre | Manufacturer | Tread depth |
| 1) | 235/50 R19 103Y | Summer tyres on Light alloy | Continental | 6mm / 6mm |
| 2) | 235/50 R19 103Y | Summer tyres on Light alloy | Continental | 7mm / 7mm |

| Replacement | | | | |
|-------------|-----------|-------------------------|--------------|-------------|
| Typ | Tyre size | Type of tyre | Manufacturer | Tread depth |
| | Tirefit | Expiration date 09/2027 | | |

Legend: Tread depth information for the left tire is listed first, for the right tire it is listed second on the axle in the direction of travel.



Equipment

Standard equipment

- AdBlue tank (12 liters)
- Airbag: Front side airbags and head airbag system
- Anti-lock braking system (ABS)
- Audi connect emergency call & service m.connect remote & control
- Electrically adjustable and heated exterior mirrors
- third brake light
- Roof rails in matte black
- Diesel particulate filter (DPF) with nitrogen oxide catalyst and AdBlue tank
- Electronic Stability Control (ESC)
- Chassis: adaptive air suspension allroad
- Luggage compartment lid, electrically opening and closing
- Transmission: S tronic 7-speed
- Interior mirror dimming
- 2-zone automatic climate control
- Headrests (4)
- LED headlights
- Steering column, manually adjustable in height and axis
- front center armrest
- Non-smoking package
- Wheel: 5-arm design alloy wheels (allroad)
- Wheel: Tire repair kit
- Radio accessories: 8 speakers (passive) front and rear
- Rail system with fixing set
- Seats: Standard front seats
- Seats: Split-folding rear seat backrest Avant
- Lane Departure Warning
- Allroad bumper in contrasting paint finish
- Glazing: Rear window, rear door and side windows in clear glass
- Central locking
- Airbag for driver and front passenger
- "quattro" all-wheel drive with ultra technology
- Audi connect navigation & infotainment
- Audi drive select
- Audi pre sense front
- Exterior mirror housings in body color
- Fabric headliner
- Decorative inlays, fine lacquer, graphite grey
- Tachometer
- Door sills with aluminum inlay front and rear
- Driver information system with color display
- key fob
- Cruise control system including speed limiter
- Interior lighting
- ISOFIX child seat attachment and Top Tether for the outer rear seats
- Paint finish: Solid
- Steering wheel: Double-spoke leather steering wheel with multifunction and paddle shifters
- MMI navigation with MMI touch response
- Progressive steering
- Wheel: Tire pressure monitoring system
- Radio: MMI Radio plus with MMI touch response
- Headlight cleaning system
- Seat covers in Essenz/mono.pur 550 fabric combination (for standard seats)
- Sun visor on driver and passenger side
- Start-stop system
- Glazing: Windscreen in heat-insulating glazing
- Electronic immobilizer
- Thermal insulation glazing on the sides and rear



Extra equipment

- AdBlue tank with increased filling volume (AdBlue tank with 22 liter filling volume - for diesel vehicles with SCR technology, to reduce nitrogen oxides in the exhaust gas)
- Allroad Interior Package (Sport seats in microfiber DIN/leather combination, allroad interior in petrol grey microfiber and black leather - rock grey contrast stitching - interior elements in synthetic leather - black floor mats - multifunction sport leather steering wheel with shift paddles and steel grey contrast stitching - aluminum Dyade decorative inlay in jangal silver - "allroad" LED entry lights - illuminated door sill trims with aluminum and "allroad" lettering front and rear - stainless steel pedals and footrest)
- Automatically dimming, frameless interior mirror (can increase safety, as reduced glare improves the perception of following traffic at night - less glare at night, among other factors, can help to recognize other vehicles in the interior mirror more quickly and better - reduced glare can help to prevent eye fatigue)
- Auxiliary heater/ventilation (The auxiliary heater warms the interior and defrosts the windows without starting the engine. The auxiliary ventilation system supplies fresh air and lowers the interior temperature. Both functions can be activated via a timer and separate remote control. An intelligent control system with timer and departure time programming calculates the heating duration efficiently in terms of time and energy. Separate remote control with illuminated display. 2 selectable heating modes: - defrost (defrost mode for the windows only) - warm)
- Camera-based traffic sign recognition (Traffic sign recognition can detect and display no-overtaking zones and speed limits. Within its system limitations, the system can also detect the beginning and end of motorways, expressways, towns and villages, and traffic-calmed areas, and displays the corresponding speed limit. Additionally, within its system limitations, it provides situation-dependent display and evaluation for wet conditions and time-of-day-dependent speed limits.)
- Comfort key with sensor-controlled luggage compartment unlocking (The vehicle can be opened by operating the door handle without actively using the key. To lock the vehicle from the outside, simply touch one of the sensor buttons on the door handles. The drive authorization is also activated without actively using the comfort key. The driver must be inside the vehicle and have the comfort key with them. The engine is started and stopped using the engine start/stop button in the center console.)
- Electrically adjustable, heated and folding exterior mirrors (including curb view function for the passenger-side exterior mirror with integrated LED turn signal, including heated windshield washer nozzles, aspherical mirror glass. The curb view function tilts the passenger-side exterior mirror downwards when reverse gear is engaged, providing the driver with a better view of the curb.)
- 4-zone automatic climate control (separate temperature control for front passenger/front passenger, rear compartment climate control via air outlets in the rear center console, defroster vents for windshield/side windows, combined pollutant/fine dust filter, temperature setting and air distribution in the rear left/right, controlled air outlets in the B-pillar, rear climate control unit with touchscreen, efficient climate zone control possible via occupant detection, automatic recirculation mode and sun-position-dependent control, dust and odor-removing allergen filter, residual heat utilization, personalization)
- Audi virtual cockpit plus (3 individual display options: Dynamic, Sport and Classic - operation via the multifunction steering wheel - configuration of on-board computer values in the tachometer - display of the navigation map as a 3D terrain model on the high-resolution 12.3-inch full HD color display - permanent display of navigation information in the speedometer area when route guidance is active - break recommendation)
- Decorative inlays aluminium Dyade jangalsilber (for dashboard, door panels and center console including aluminum-look trim)
- Entry-level LED with logo projection at the front
- Fuel tank (73 liters) (fuel tank for 73 liters of gasoline/diesel fuel)
- Head-up display (projects speed and other driver-relevant information from optional equipment such as assistance systems and navigation, as well as warnings, into the driver's direct field of vision; height-adjustable; enables high-contrast, multi-colored display with reduced eye strain from the road)
- High beam assist (within the system's limits, it automatically detects oncoming headlights, taillights of other road users, and built-up areas. Depending on the traffic situation, the high beam is automatically switched on or off.)
- Instrument panel and door trim, two-piece, single/multi-color
- Lane change warning including Audi pre sense rear, exit warning and rear cross-traffic assist (Lane change warning helps the driver monitor the blind spot and traffic behind the vehicle. Exit warning warns of a possible collision when opening a door while the vehicle is stationary. Rear cross-traffic assist (Audi pre sense rear) uses data from the radar sensors.)
- Manual sunshade (for the rear door windows)
- Package: Ambient lighting package plus (contour lighting front/rear doors, color-matched - ambient fabric lighting front/rear doors, color-matched - ambient lighting front center console, color-matched - contour lighting front center console, color-matched - contour lighting with illuminated quattro lettering (for all-wheel drive) on the instrument panel on the passenger side, color-matched - ambient lighting of the instrument panel)
- Paint finish: Metallic



- Front and rear seat heating (heats seat and backrest center panels; with leather upholstery, sport seats and sport seats plus also seat side bolsters - individually adjustable in multiple stages for driver and front passenger on the climate control unit - additionally for the outer rear seats, separately adjustable in multiple stages)
- Interior elements in synthetic leather at the bottom (armrest in the doors and trim of the center console in synthetic leather black, okapi brown, pearl beige, black with contrast stitching in rock grey or rotor grey with contrast stitching in anthracite in conjunction with Audi design selection in: black with contrast stitching in rock grey or pearl beige with contrast stitching in agate grey or sardine brown with contrast stitching in steel grey)
- Parking aid plus with surround view (acoustic and visual parking aid front, side and rear to assist with parking and maneuvering by measuring with 12 ultrasonic sensors. A selective visual display shows the distance to detected objects in the upper display, depending on the current steering angle and the direction of travel. Optionally, activation occurs automatically as soon as the vehicle approaches a detected obstacle at a speed of less than 10 km/h).
- Reversing camera (The reversing camera displays the area behind the vehicle on the upper display. Dynamic display elements such as a steering angle-dependent lane calculation assist with parking or maneuvering.)
- Seats: 4-way lumbar support (electrically adjustable, horizontally and vertically)
- Seats: Front sports seats (with manual adjustment of seat height, seat longitudinal position, seat tilt, backrest tilt, headrest height and distance and belt height with pronounced seat side bolsters for better lateral support in curves, extendable thigh support and electric 4-way lumbar support)
- Panoramic glass roof (2-piece) (extra-large, tinted glass surface for a progressive design; electric operation for tilting and opening, including an electrically operated, lightproof sunshade; convenient opening and closing from the outside via the remote key ensures a pleasant, light-flooded interior; improved interior climate through efficient ventilation; integrated wind deflector reduces wind noise when the roof is open)
- Seat covers in microfiber Dinamica/leather combination interior allroad (seat center panels of the front seats and the two outer rear seats in microfiber Dinamica petrol grey - headrest center panel front and outer rear seats in leather black - seat side bolsters, headrests, middle rear seat and center armrest in leather black - armrest in the doors and lower center console in synthetic leather black with contrast stitching in rock grey - floor mats black with contrast stitching in rock grey - allroad embossing in the backrest of the front seats)
- Steering wheel: Leather steering wheel, 3-spoke, with multifunction and paddle shifters (paddle shifters allow manual changing of the driving modes.)
- Telephone: Audi Phone Box (Up to two smartphones can be paired with the vehicle simultaneously via Bluetooth, allowing you to play music through the vehicle or make phone calls from either smartphone. The universal smartphone holder connects to the vehicle's antenna, improving both reception and call quality. The smartphone can also be charged wirelessly using the Qi standard or via USB.)
- Wheel: Audi new car tire warranty (36-month term from vehicle handover to the first customer)
- Wheel: Light alloy wheels 5-twin-spoke design, graphite grey, polished (allroad) (8.5J x 19 with tires 235/50 R19)

Brief expert findings

| | |
|----------------------|------------------------------------------------------------------------------------------------------------------------------------------------------------------------------|
| Documents submitted | At the time of the inspection, the vehicle registration certificate Part 2 (title) was available, but the vehicle registration certificate Part 1 (document) was not. (Copy) |
| VIN comparison | The vehicle identification number (VIN) was read from the vehicle and its conformity with the submitted documents was confirmed by the undersigned during the inspection. |
| Inspection | The inspection conditions were sufficient for the assessment of the vehicle. Lifting equipment and/or a pit were available for examining the vehicle. |
| Test drive | A short maneuvering and shunting exercise was carried out on the company premises. |
| Engine function test | An engine test run was performed. |



Value reducing factors

| No. | Component group | Description |
|-----|------------------------|-----------------------------------------------------------------------|
| 1 | Equipment | Vehicle key with remote control (Batterie) - Due - Replace |
| 2 | Bonnet | Bonnet (Harz; Mehrkosten möglich) - Soiled - Conditioning |
| 3 | Door - rear right side | Door - Scratch(es) - Smart repair |
| 4 | Roof | Roof rail - left side - Paint defect - Smart repair |
| 5 | Vehicle glazing | Windscreen with lane departure assistant - Stone chips - Smart repair |
| 6 | Wheel / tyres | Alloy rim - front right side - Scratched - Loss in value |
| 7 | Wheel / tyres | Alloy rim - rear right side - Scratched - Loss in value |
| 8 | Front bumper | Spoiler (links + rechts + mitte) - Scratched - Loss in value |

Wear and tear

| No. | Component group | Description |
|-----|-----------------------------|---------------------------------------------------------|
| 1 | Side panel - rear left side | Sill - dent(s) - No deduction |
| 2 | Wheel / tyres | Alloy rim - rear left side - Scratch(es) - No deduction |

The vehicle shows signs of wear and tear commensurate with its age and use.

Previous damages

| No. | Previous damage | Extent of damage (Net) |
|-----|------------------------------------------------------------|------------------------|
| 1 | Side - left, Provided by user / customer, from 17 Aug 2023 | 3.466,40 € |

Repainting

| No. | Repainting |
|-----|----------------------------------------------------------------------------------------------|
| 1 | Side panel - rear left side, Professionally carried out, Invoice of repair done Non-existent |
| 2 | Door - rear left side, Professionally carried out, Invoice of repair done Non-existent |

Paint coat thickness measurement

| | | | |
|-----------------------------|--------|-----------------------|--------|
| Side panel - rear left side | 169 µm | Door - rear left side | 158 µm |
|-----------------------------|--------|-----------------------|--------|

Order/Scope of Order

An order was placed to prepare a sales report for the described vehicle. This report includes the following:

- Description of key vehicle information
- Documentation of equipment features
(*Delivery by third-party service providers*)
- Documentation of damage, defects, missing parts
- Documentation of prior damage, unrepaired prior damage, repainting
- A brief visual or functional inspection of the equipment details, if possible.
(*Functional testing of driver assistance systems is not included in the scope of services!*)
- a photographic documentation of the vehicle



Basis for the order

This product is based on the guidelines for vehicle returns and valuations published by Alphabet Fleet GmbH. The expert makes the specific findings in each individual case objectively, within the framework of the prescribed standards, based on their own expertise.

The vehicle inspection takes place in a fully assembled, unassembled state.

Damage or defects that can only be detected during disassembly/diagnostic work or through further investigation remain within the realm of prognostic risk. An increased risk exists due to concealed defects caused by fraudulent misrepresentation and which were not identifiable by the expert.

Damage or defects resulting from normal use or wear and tear of the vehicle will be accepted in accordance with the applicable standard.

There was no explicit identification or monetary consideration of the expected features within the product.

Features which, in their nature and extent, slightly exceed normal use but do not constitute unacceptable damage, will be documented and indicated as signs of wear, if applicable.

Damage or defects that, according to the applicable standard, can no longer be attributed to normal use or wear and tear are listed under "Value Reducing Factors" in the product description.

Depending on the product specification, a monetary ID can be provided. If this takes place, the costs can be 100% d or pro rata depending on the vehicle's age and mileage.

Previous damages

According to available information previous damages were repaired at the vehicle. Traces of repairs, which allow conclusions about the area of repair, were not recognizable during the inspection.



Figure 1: Diagonal front (left)



Figure 2: Diagonal front (right)



Figure 3: Diagonal rear (left)



Figure 4: Diagonal rear (right)



Figure 5: Interior - front



Figure 6: Interior - rear



Figure 7: Instrument cluster



Figure 8: Instrument cluster



Figure 9: Instrument panel



Figure 10: Interior 360° view



Figure 11: Cargo area

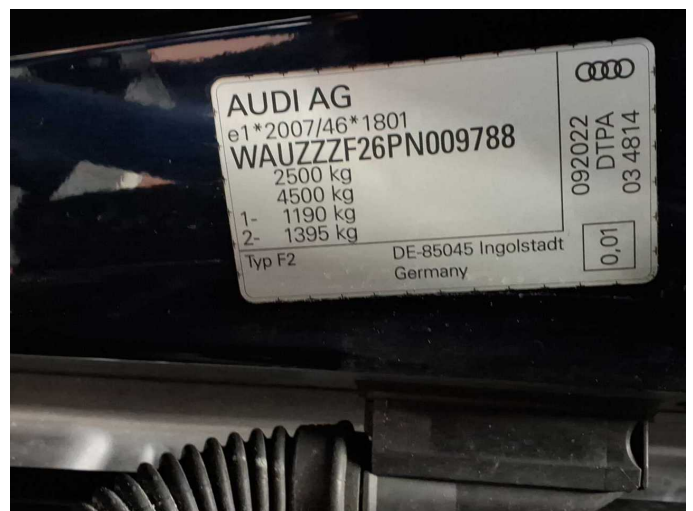


Figure 12: VIN



Figure 13: Mounted tyres

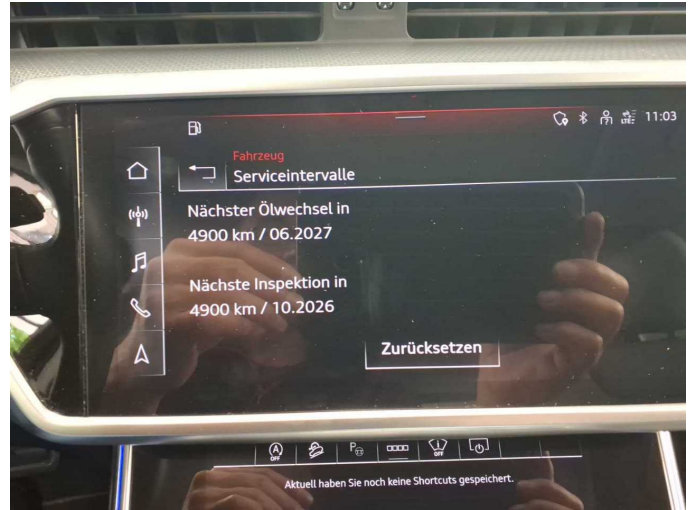


Figure 14: Documents



Figure 15: Documents



Figure 16: Documents

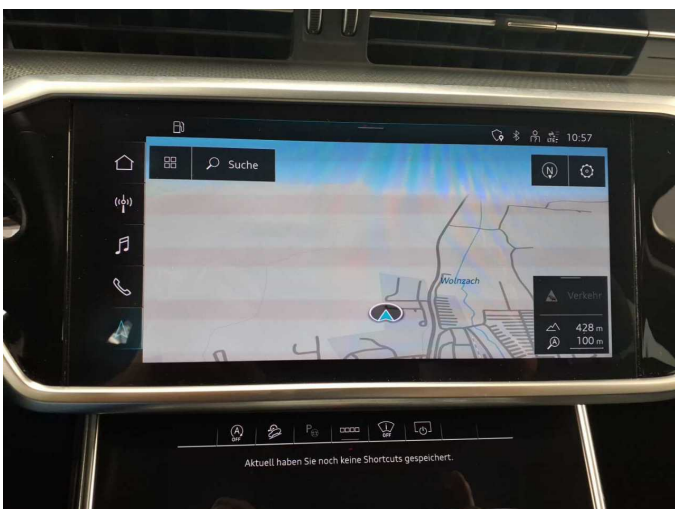


Figure 17: Navigation



Figure 18: Misc.



Figure 19: Misc.



Figure 20: Misc.

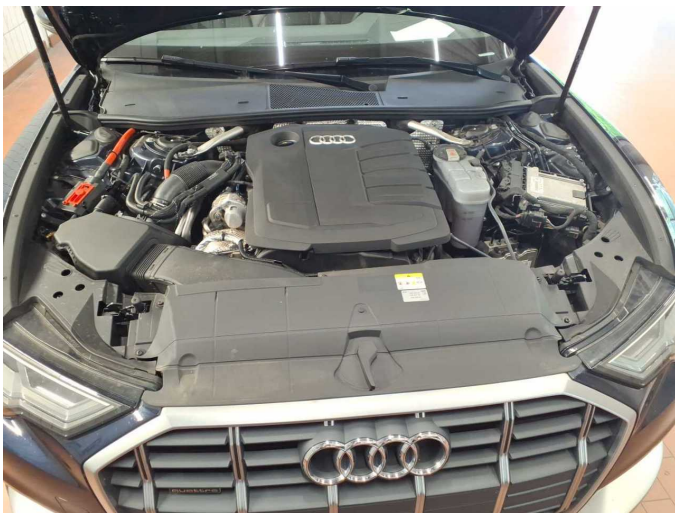


Figure 21: Misc.



Figure 22: Misc.

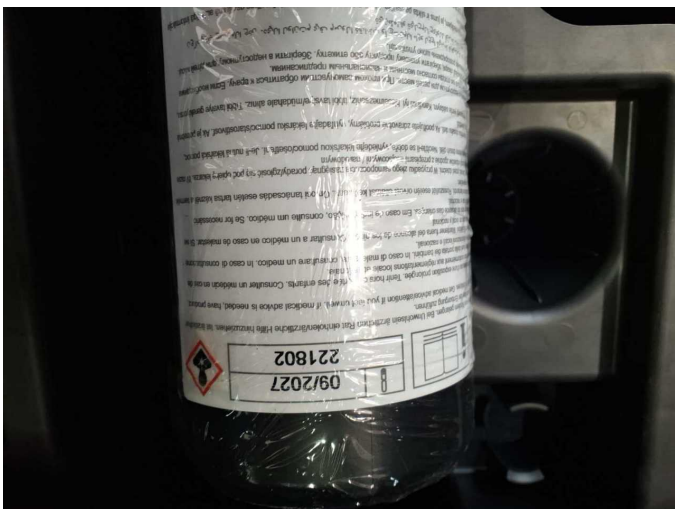


Figure 23: Misc.



Figure 24: Misc.



Figure 25: Misc.



Figure 26: Misc.



Figure 27: Misc.



Figure 28: Misc.

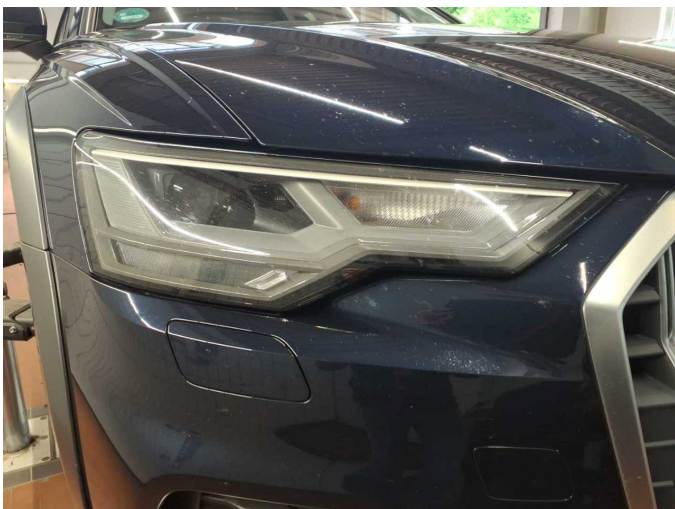


Figure 29: Misc.



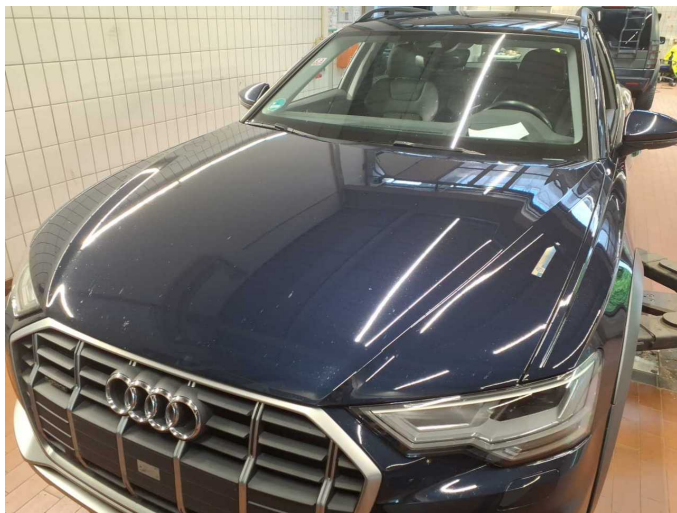
Figure 30: Misc.



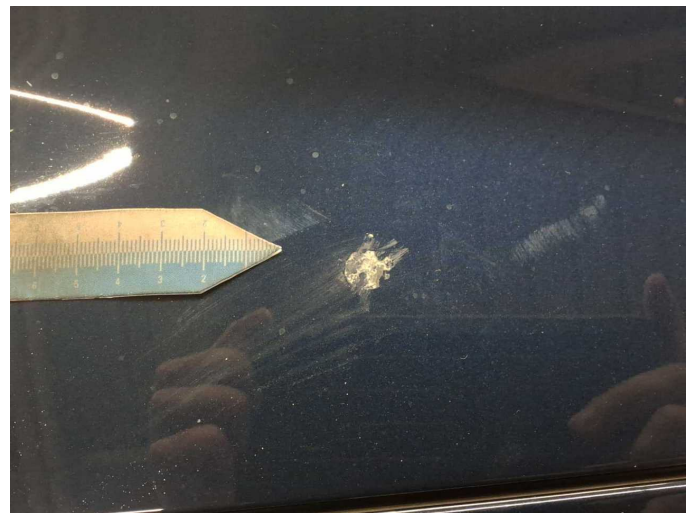
Figure 31: Misc.



Damage 1: Equipment: Vehicle key with remote control (Batterie) - Due - Replace



Damage 2: Bonnet: Bonnet (Harz; Mehrkosten möglich) - Soiled - Conditioning



Damage 2: Bonnet: Bonnet (Harz; Mehrkosten möglich) - Soiled - Conditioning



Damage 3: Door - rear right side: Door - Scratch(es) - Smart repair



Damage 3: Door - rear right side: Door - Scratch(es) - Smart repair



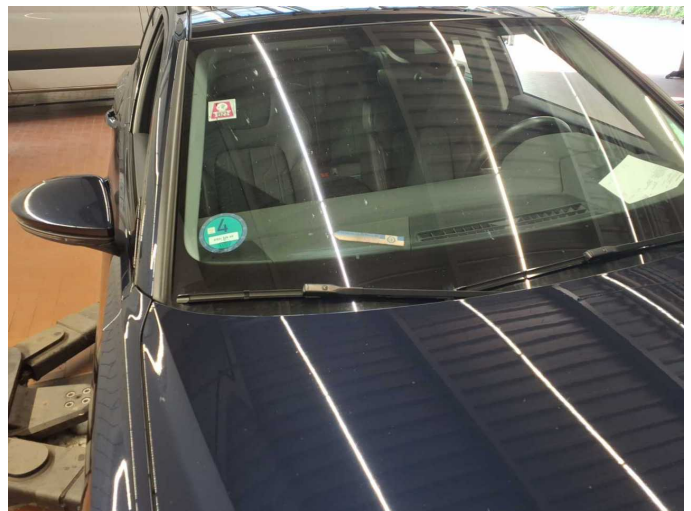
Damage 4: Roof: Roof rail - left side - Paint defect - Smart repair



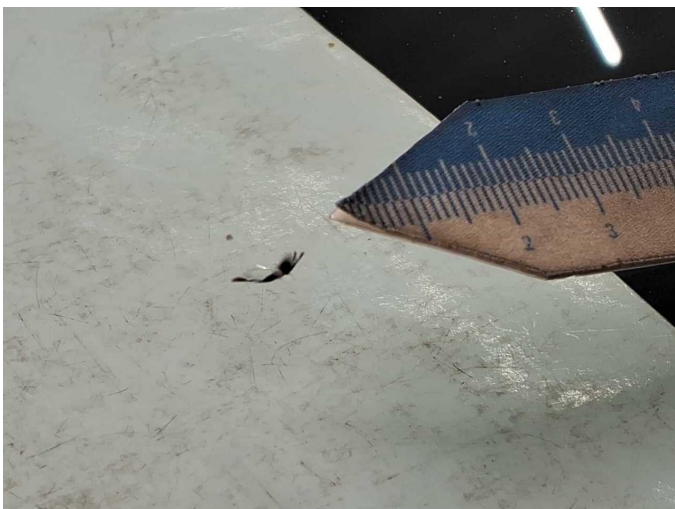
Damage 4: Roof: Roof rail - left side - Paint defect - Smart repair



Damage 4: Roof: Roof rail - left side - Paint defect - Smart repair



Damage 5: Vehicle glazing: Windscreen with lane departure assistant - Stone chips - Smart repair



Damage 5: Vehicle glazing: Windscreen with lane departure assistant - Stone chips - Smart repair



Damage 5: Vehicle glazing: Windscreen with lane departure assistant - Stone chips - Smart repair



Damage 6: Wheel / tyres: Alloy rim - front right side - Scratched - Loss in value



Damage 6: Wheel / tyres: Alloy rim - front right side - Scratched - Loss in value



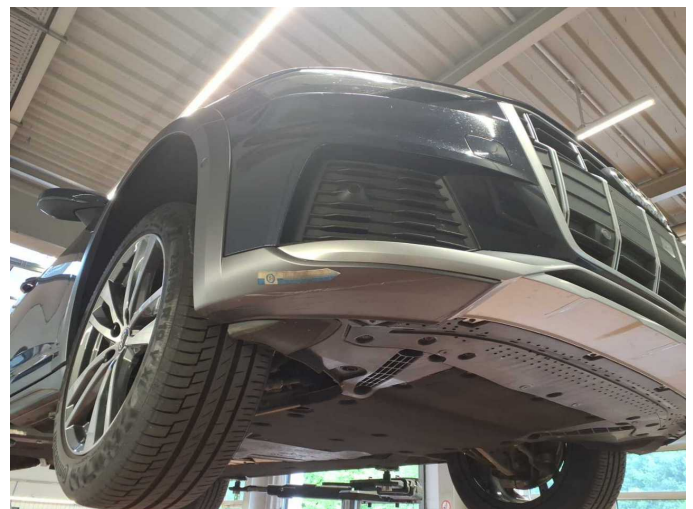
Damage 6: Wheel / tyres: Alloy rim - front right side - Scratched - Loss in value



Damage 7: Wheel / tyres: Alloy rim - rear right side - Scratched - Loss in value



Damage 7: Wheel / tyres: Alloy rim - rear right side - Scratched - Loss in value



Damage 8: Front bumper: Spoiler (links + rechts + mitte) - Scratched - Loss in value



Damage 8: Front bumper: Spoiler (links + rechts + mitte) - Scratched - Loss in value



Damage 8: Front bumper: Spoiler (links + rechts + mitte) - Scratched - Loss in value



Damage 8: Front bumper: Spoiler (links + rechts + mitte) - Scratched - Loss in value



Damage 8: Front bumper: Spoiler (links + rechts + mitte) - Scratched - Loss in value



Damage 8: Front bumper: Spoiler (links + rechts + mitte) - Scratched - Loss in value



Damage 8: Front bumper: Spoiler (links + rechts + mitte) - Scratched - Loss in value



Damage 8: Front bumper: Spoiler (links + rechts + mitte) - Scratched - Loss in value



Damage 8: Front bumper: Spoiler (links + rechts + mitte) - Scratched - Loss in value



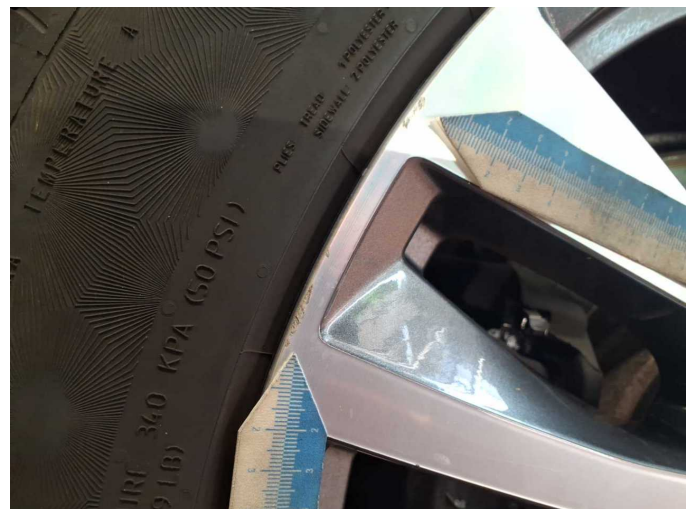
Damage 8: Front bumper: Spoiler (links + rechts + mitte) - Scratched - Loss in value



Damage 8: Front bumper: Spoiler (links + rechts + mitte) - Scratched - Loss in value



Wear and tear 2: Wheel / tyres: Alloy rim - rear left side - Scratch(es) - No deduction



Wear and tear 2: Wheel / tyres: Alloy rim - rear left side - Scratch(es) - No deduction



Repainting 1: Side panel - rear left side



Repainting 2: Door - rear left side



Wartungshistorie

(gemäß Auftraggeber Informationen)

Fahrgestellnummer: WAUZZZF26PN009788
Hersteller / Modell: AUDI AUDI A6 allroad quattro 40 TDI S tronic

| Datum | KM-Stand | Beschreibung |
|------------|----------|--------------------------------------------------------------------------------------------------------------------------------------------|
| 19.03.2026 | 107.900 | Getriebeöl ern/prüfen; Ölwechsel - Hinterachse; Reparatur Sonstiges; Systemtest/Eigendiagnose |
| 04.11.2025 | 97.688 | AU |
| 16.06.2025 | 87.252 | Luffiltereinsatz ern; Motoröl b. Wartung; Ölfilter ern; Regelwartungsdienst; Wartung Sonstiges |
| 18.10.2024 | 66.279 | Bremsflüssigkeit; Bremsflüssigkeit ern |
| 22.07.2024 | 58.928 | Getriebeöl ern/prüfen; Kraftstofffilter ern; Motoröl b. Wartung; Ölfilter ern; Regelwartungsdienst; Reparatur Sonstiges; Wartung Sonstiges |
| 11.10.2023 | 28.593 | Motoröl b. Wartung; Ölfilter ern; Regelwartungsdienst; Wartung Sonstiges |