

## Expertise

Protocol number: 46190325  
Order No. / Reference: 26543722  
Inspection date: 29 Jun 2026

Manufacturer: Skoda

Model: Kodiaq 2.0 TDI 4x4 DSG Sportline

VIN: TMBLJ7NS3P8044955



### Vehicle details

#### Manufacturer / Type / Model / Equipment

Skoda Kodiaq 2.0 TDI 4x4 DSG Sportline

**Vehicle Identification number** TMBLJ7NS3P8044955

**Mileage (Read)** 106,778 km

**First registration** 3 May 2023

**Number of holders** 1

**Next periodical technical inspection** 05/2026  
(Report not on hand)

**Power / Engine displacement** 110 kw / 1,968 ccm

**Fuel type / Cylinder** Diesel / 4

**Gearbox / Number of gears** Automatic / 7

**Type of drive** All-wheel drive

**Type of vehicle** Station wagon

**Colour / colour code** Black Magic Pearlescent  
(F9R)

**Doors / Seats** 5 / 5

**Upholstery type** Leather

**Colour of upholstery** Black



## Vehicle details

<b>Maintenance booklet / proof</b>	Non-existent	<b>Next maintenance in</b>	4,200 km
<b>Key is / should be</b>	2 / 2	<b>FZG documents</b>	ZB#2 (B) was available (copy), ZB#1 (S) was not available.
		<b>Letter No.</b>	GQ571530
<b>Previous damage / Accident</b>	None detectable	<b>Repainting</b>	None detectable
<b>Inspection conditions</b>	sufficient	<b>Lifting equipment / pit</b>	yes
<b>Test drive</b>	Not performed	<b>Engine function test</b>	Performed
<b>Manufacturer key number/ type code number</b>	8004 / ARW 01012		
<b>Emission standard</b>	EURO6;WLTP;AP;PI/CI; M, N1 I	<b>fine dust sticker</b>	
<b>Permitted total weight</b>	2,430 kg	<b>Empty weight</b>	

## Tyres

### Mounted tyres

#	Tyre size	Type of tyre	Manufacturer	Tread depth
1)	235/50 R19 103W	All-season tyres on Light alloy	Hankook	5mm / 5mm
2)	235/50 R19 103W	All-season tyres on Light alloy	Hankook	6mm / 6mm

### Additional tyres

#	Tyre size	Type of tyre	Manufacturer	Tread depth
1)	215/65 R17 99H	Winter tyres on Light alloy	Continental	5mm / 5mm
2)	215/65 R17 99H	Winter tyres on Light alloy	Continental	5mm / 5mm

### Replacement

Typ	Tyre size	Type of tyre	Manufacturer	Tread depth
Tirefit		Expiration date 02/2027		

**Legend: Tread depth information for the left tire is listed first, for the right tire it is listed second on the axle in the direction of travel.**

TÜV SÜD Auto Partner GmbH  
Wiesenring 2  
04159 Leipzig

Inspection location  
Mosolf SE & Co.KG  
August-Horch-Straße 1  
04519 Rackwitz



## Equipment



## Standard equipment

- 12V socket in the center console and in the trunk
- Storage compartments behind the wheel arches in the trunk
- Airbag, driver's knee airbag
- Airbag, head airbags
- Allergen filter
- Anti-lock braking system (ABS)
- Dashboard in black / black, door trim in black with microfiber inlay
- Electrically adjustable and heated exterior mirrors with integrated side indicators
- Care Connect: Proactive services (10-year term) (Remote Access (1-year term))
- Dark Carbon decorative inlay
- Digital Cockpit (8")
- Third brake light (in the rear spoiler (LED))
- eCall (automatic emergency call function in case of an accident with airbag deployment)
- ESC Electronic Stability Control
- Driving profile selection
- Chassis: Adaptive chassis DCC including driving profile selection (including off-road assistant for 4x4 drive)
- High Beam Assist (Light Assist)
- front and rear floor mats
- Front and rear footwell lighting
- Cruise control
- Tinted windows
- Isofix anchorage on the outer rear seats including top tether
- Boot cover, roll-up and removable
- Front headrests are fixed, rear headrests are height-adjustable.
- LED matrix headlights and dynamic high beam assist (Light Assist)
- LED taillights in crystal glass look with animated turn signals
- Reading lights at the front of the headliner
- Rear center armrest with cup holders
- Engine drag torque control (MSR)
- Fog lights with integrated LED daytime running lights
- Progressive steering
- Radio accessories: 8 speakers
- Radio accessories: Digital radio reception DAB+
- Tire pressure monitoring
- Rear seat backrest split 60:40, foldable, longitudinally adjustable, backrest angle adjustable
- Headlights washer / wiper system
- Kodiaq safety belts (Height-adjustable three-point seat belts in the front, with belt tensioners - Three three-point seat belts in the rear - Belt fastening indicator in the front and in the second row of seats)
- Seats: Height-adjustable front seats
- Storage compartment on the left wheel arch
- front aero windshield wipers
- Airbag for driver and front passenger (passenger airbag can be deactivated)
- Airbag, front side airbags
- Permanent all-wheel drive
- Traction control (ASR)
- Electrically folding exterior mirrors including interior and driver's side mirrors with automatic dimming
- Hill start assist
- Hydraulic brake assist (HBA)
- Black headliner
- Roof rails, black
- Diesel particulate filter
- Tachometer
- Easy Start (start-stop button)
- Electronic parking brake including auto-hold function
- Electronic transverse differential lock (XDS+)
- Driving light assistant and rain sensor ((tunnel light, coming and leaving home function))
- Electric windows front and rear (including anti-pinch protection and child safety lock)
- Front radar assistant including city emergency braking function with pedestrian detection
- Closed storage compartment on the driver's side
- Transmission: 7-speed dual-clutch transmission (DSG)
- Illuminated glove compartment
- Climatronic air conditioning (2-zone) (fully automatic, separately adjustable for driver and front passenger including humidity sensor and odor and allergen filter)
- LED ambient lighting (decorative strips in the door panels with selectable color climate, LED reading lights in the front, LED lighting for the make-up mirrors in the sun visors)
- Steering wheel: Sport leather steering wheel with multifunction buttons including paddle shifters (height and reach adjustable)
- Front center armrest, including storage compartment
- Multi-collision brake
- Stainless steel pedal design
- Radio: Bolero infotainment system (Bolero music system - 8" capacitive color display - voice control)
- Radio accessories: Wireless SmartLink
- Wheels: 19" alloy wheels Triglav anthracite polished (7Jx19 tires 235/50 R19 99V ET43)
- Heated windshield washer nozzles, front
- Electromechanical power steering
- Seats: Heated front and outer rear seats
- Seats: Adjustable lumbar support in the front seats
- Seats: Electrically adjustable front seats with memory function
- Seats: Remote release of the rear seat backrests (2nd row) in the boot



- Skoda Care Connect (SOS emergency call function (eCall, including automatic activation in the event of an accident with airbag deployment) - Mobility service (connection for rapid assistance in case of breakdown) - Information service (connection to the hotline for all questions regarding vehicle functions) - Free remote vehicle access for one year with access to vehicle data/functions via smartphone, e.g., parking position, activating hazard warning lights, current fuel level, etc.)
- Front door sill trims
- Lashing eyes in the trunk
- Central locking with remote control (two vehicle keys)
- Sun visor on driver and passenger side with illuminated vanity mirror
- Speed limiter
- Bumpers painted in body color
- Sunset (rear window and rear side windows tinted dark)
- Telephone: Comfort hands-free telephone system including phone box (with inductive charging function (connection via external antenna))
- Variable fastening concept in the trunk
- Immobiliser

### Extra equipment

- Adaptive Cruise Control (ACC) (control range up to 210 km/h) (replaces cruise control)
- Electric tailgate operation
- Package: Business Amundsen (Sportline) (Amundsen dynamic radio navigation system - 8" capacitive color display - Digital Cockpit Plus (10") - Driver fatigue detection - 230V socket and a USB charging port (Type-C) on the back of the front center armrest - Luggage net partition - Infotainment Online (3-year subscription))
- Swiveling trailer hitch (with electric release, including trailer stabilization)
- Paint finish: Metallic / Pearl effect
- Front and rear parking sensors
- Upholstery: Leather interior with ventilated front seats (including manual seat extension - seat surfaces made of fine nappa leather, combined with high-quality materials)
- Rear view camera
- Auxiliary heating

### Brief expert findings

Documents submitted	At the time of the inspection, the vehicle registration certificate Part 2 (title) was available, but the vehicle registration certificate Part 1 (document) was not. (Copy)
VIN comparison	The vehicle identification number (VIN) was read from the vehicle and its conformity with the submitted documents was confirmed by the undersigned during the inspection.
Inspection	The inspection conditions were sufficient for the assessment of the vehicle. Lifting equipment and/or a pit were available for examining the vehicle.
Test drive	No test drive/shunting maneuver was carried out during the inspection of the vehicle.
Engine function test	An engine test run was performed.

### Value reducing factors

No.	Component group	Description
1	Misc.	Main inspection - No evidence - No deduction
2	Body	Underbody (Ölspuren erkennbar) - Soiled - Perform diagnosis
3	Roof	Roof - Dent / paintcoat damage - Smart repair
4	Front bumper	Front bumper - Scratch(es) - Smart repair
5	Braking system	Brake discs and pads - rear - Corrosion - Replace
6	Door - rear left side	Door - Scratch(es) - Repair and paint
7	Vehicle glazing	Windscreen - Stone chips - Replace

### Wear and tear

No.	Component group	Description
1	Rear bumper	Rear bumper - Scratch(es) - No deduction
2	Misc.	Inspection / maintenance - No evidence - No deduction

The vehicle shows signs of wear and tear commensurate with its age and use.



## Order/Scope of Order

An order was placed to prepare a sales report for the described vehicle. This report includes the following:

- Description of key vehicle information
- Documentation of equipment features  
*(Delivery by third-party service providers)*
- Documentation of damage, defects, missing parts
- Documentation of prior damage, unrepaired prior damage, repainting
- A brief visual or functional inspection of the equipment details, if possible.  
*(Functional testing of driver assistance systems is not included in the scope of services!)*
- a photographic documentation of the vehicle

## Basis for the order

This product is based on the guidelines for vehicle returns and valuations published by Alphabet Fleet GmbH. The expert makes the specific findings in each individual case objectively, within the framework of the prescribed standards, based on their own expertise.

The vehicle inspection takes place in a fully assembled, unassembled state.

Damage or defects that can only be detected during disassembly/diagnostic work or through further investigation remain within the realm of prognostic risk. An increased risk exists due to concealed defects caused by fraudulent misrepresentation and which were not identifiable by the expert.

Damage or defects resulting from normal use or wear and tear of the vehicle will be accepted in accordance with the applicable standard.

There was no explicit identification or monetary consideration of the expected features within the product.

Features which, in their nature and extent, slightly exceed normal use but do not constitute unacceptable damage, will be documented and indicated as signs of wear, if applicable.

Damage or defects that, according to the applicable standard, can no longer be attributed to normal use or wear and tear are listed under "Value Reducing Factors" in the product description.

Depending on the product specification, a monetary ID can be provided. If this takes place, the costs can be 100% d or pro rata depending on the vehicle's age and mileage.

## Previous damages

No apparent prior damage that had been repaired could be found on the vehicle.



Figure 1: Diagonal front (left)



Figure 2: Diagonal front (right)



Figure 3: Diagonal rear (left)



Figure 4: Diagonal rear (right)

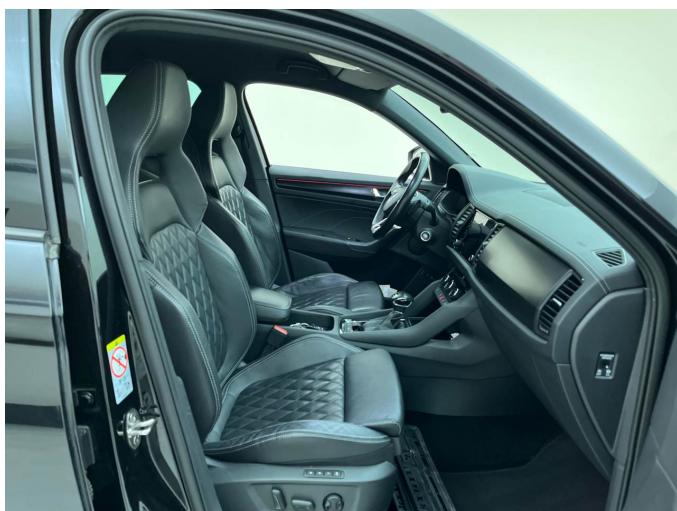


Figure 5: Interior - front



Figure 6: Interior - rear



Figure 7: Instrument cluster



Figure 8: Instrument panel



Figure 9: Interior 360° view



Figure 10: Cargo area



Figure 11: VIN



Figure 12: Mounted tyres



Figure 13: Documents



Figure 14: Documents

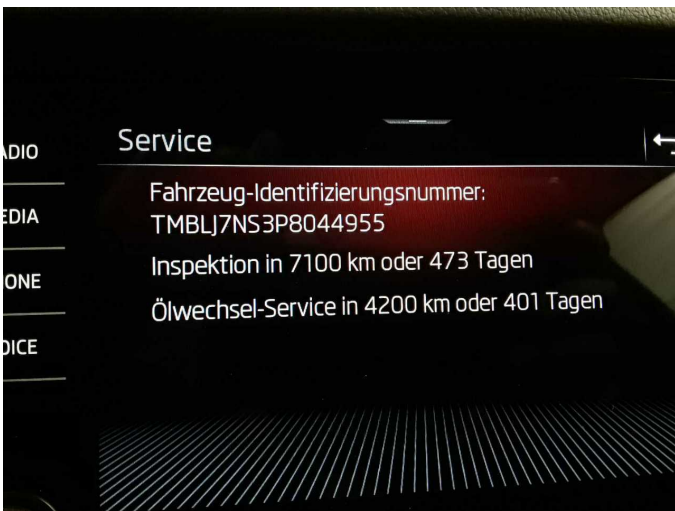


Figure 15: Documents



Figure 16: Documents



Figure 17: Additional tyres

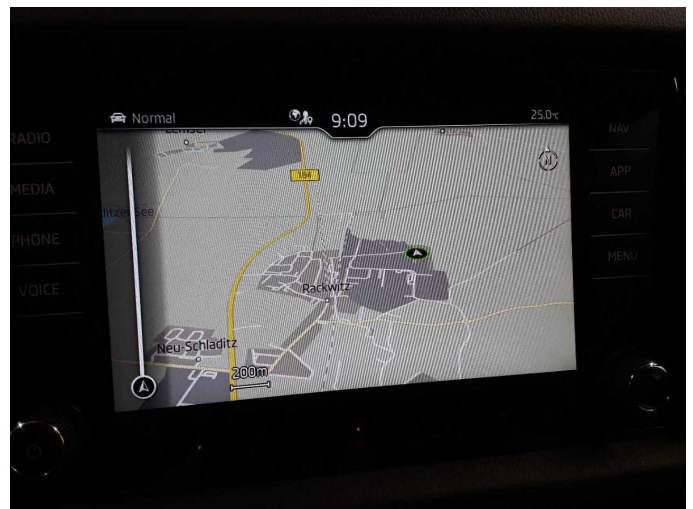


Figure 18: Navigation



Figure 19: Misc.



Figure 20: Misc.

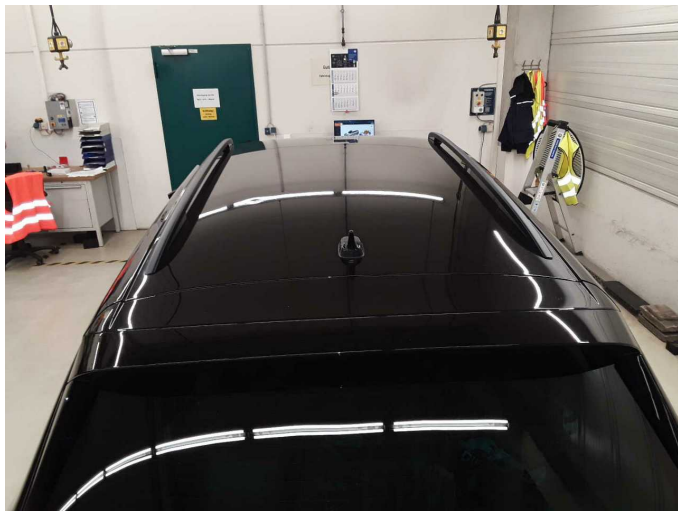


Figure 21: Misc.

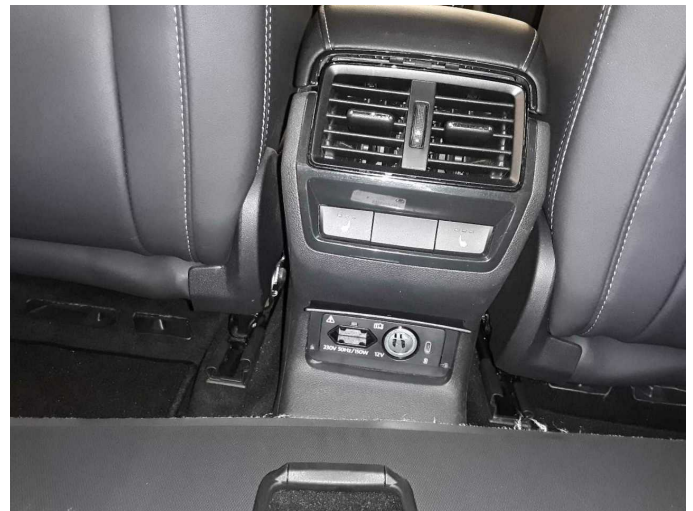


Figure 22: Misc.



Figure 23: Misc.

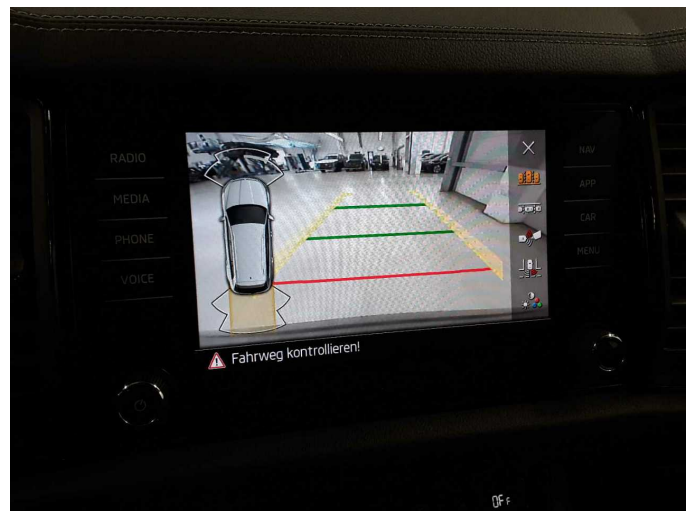


Figure 24: Misc.



Figure 25: Misc.



Figure 26: Misc.



Figure 27: Misc.



Figure 28: Misc.



Figure 29: Misc.



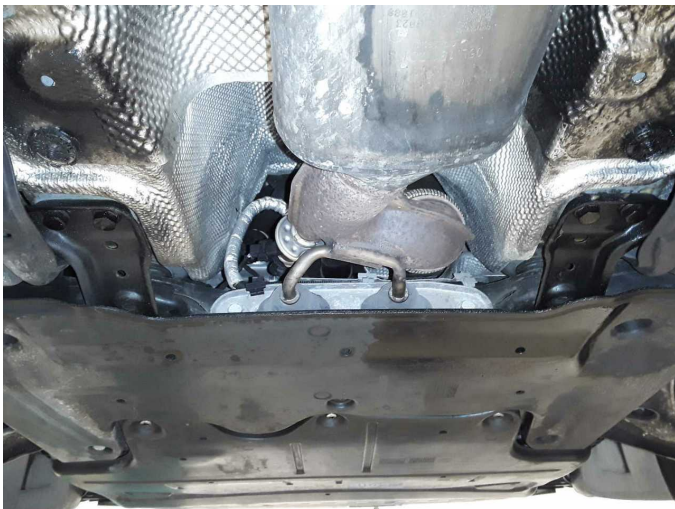
Damage 2: Body: Underbody (Ölspuren erkennbar) - Soiled - Perform diagnosis



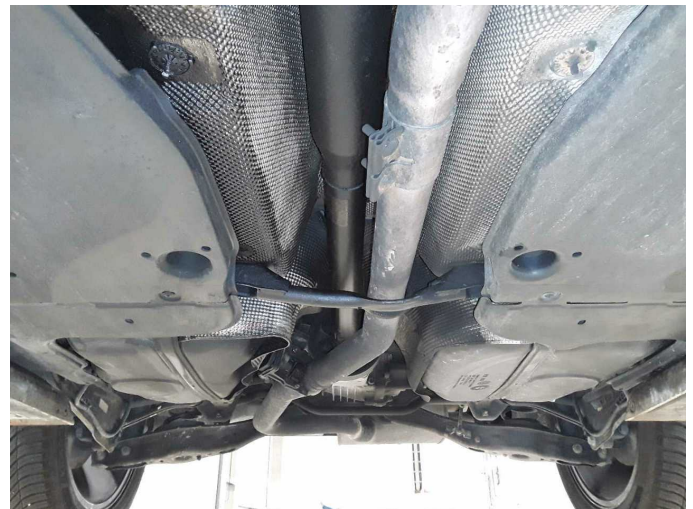
**Damage 2:** Body: Underbody (Ölspuren erkennbar) - Soiled - Perform diagnosis



**Damage 2:** Body: Underbody (Ölspuren erkennbar) - Soiled - Perform diagnosis



**Damage 2:** Body: Underbody (Ölspuren erkennbar) - Soiled - Perform diagnosis



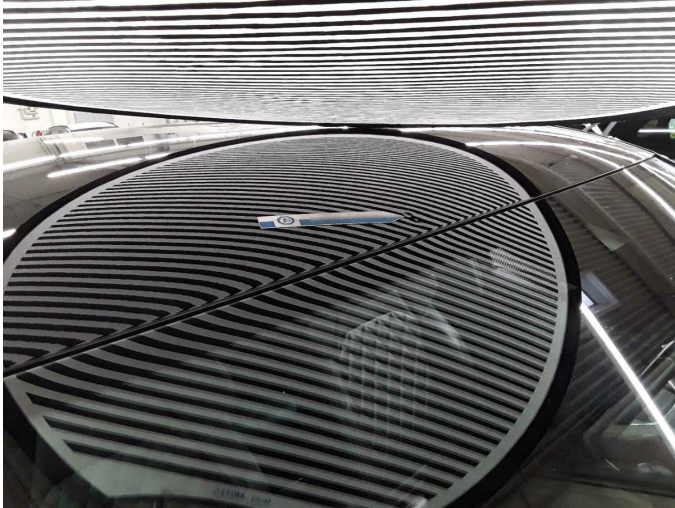
**Damage 2:** Body: Underbody (Ölspuren erkennbar) - Soiled - Perform diagnosis



**Damage 2:** Body: Underbody (Ölspuren erkennbar) - Soiled - Perform diagnosis



**Damage 2:** Body: Underbody (Ölspuren erkennbar) - Soiled - Perform diagnosis



**Damage 3:** Roof: Roof - Dent / paintcoat damage - Smart repair



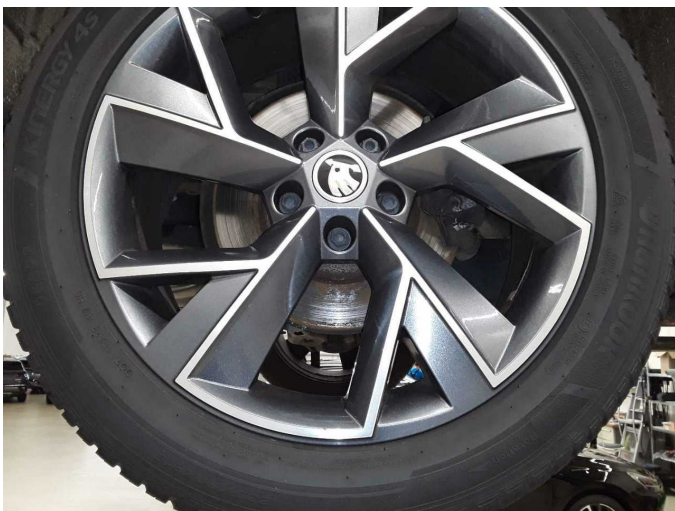
**Damage 3:** Roof: Roof - Dent / paintcoat damage - Smart repair



**Damage 4:** Front bumper: Front bumper - Scratch(es) - Smart repair



**Damage 4:** Front bumper: Front bumper - Scratch(es) - Smart repair



**Damage 5:** Braking system: Brake discs and pads - rear - Corrosion - Replace



**Damage 5:** Braking system: Brake discs and pads - rear - Corrosion - Replace



**Damage 5:** Braking system: Brake discs and pads - rear - Corrosion - Replace



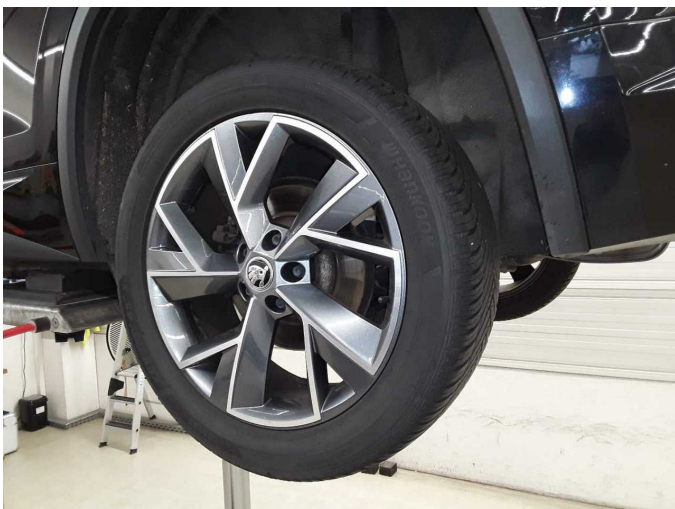
**Damage 5:** Braking system: Brake discs and pads - rear - Corrosion - Replace



**Damage 5:** Braking system: Brake discs and pads - rear - Corrosion - Replace



**Damage 5:** Braking system: Brake discs and pads - rear - Corrosion - Replace



**Damage 5:** Braking system: Brake discs and pads - rear - Corrosion - Replace



**Damage 6:** Door - rear left side: Door - Scratch(es) - Repair and paint



**Damage 6:** Door - rear left side: Door - Scratch(es) - Repair and paint



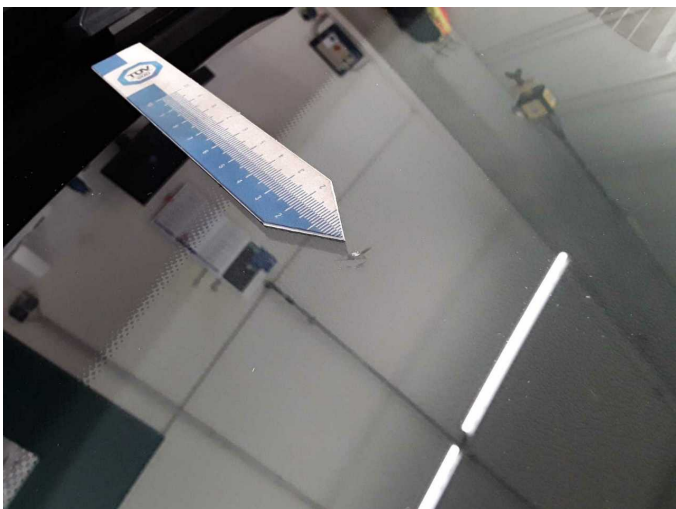
**Damage 6:** Door - rear left side: Door - Scratch(es) - Repair and paint



**Damage 7:** Vehicle glazing: Windscreen - Stone chips - Replace



**Damage 7:** Vehicle glazing: Windscreen - Stone chips - Replace



**Damage 7:** Vehicle glazing: Windscreen - Stone chips - Replace