

Expertise

Protocol number: 46267854
Order No. / Reference: 26503843
Inspection date: 1 Jul 2026

Manufacturer: Volkswagen

Model: Golf Variant 2.0 TDI SCR DSG Style

VIN: WVVZZZCDZNW525091



Vehicle details

Manufacturer / Type / Model / Equipment

Volkswagen Golf Variant 2.0 TDI SCR DSG Style

Vehicle Identification number WVVZZZCDZNW525091

Mileage (Read) 83,747 km

First registration 8 Jun 2022

Number of holders 1

Power / Engine displacement 110 kw / 1,968 ccm

Fuel type / Cylinder Diesel / 4

Gearbox / Number of gears Automatic / 7

Type of drive Front drive

Type of vehicle Station wagon

Colour / colour code Atlantic Blue Metallic (C5B)

Doors / Seats 5 / 5

Upholstery type Alcantara / cloth

Colour of upholstery Anthracite-Grey



Vehicle details

Maintenance booklet / proof	digital proof / complete	Next maintenance in	700 km
Last service on / at	11/2025 at 78,552 km		
Key is / should be	2 / 2	FZG documents	ZB#2 (B) was available (copy), ZB#1 (S) was not available.
		Letter No.	GJ130874
Previous damage / Accident	None detectable	Repainting	None detectable
Inspection conditions	sufficient	Lifting equipment / pit	yes
Test drive	Not performed	Engine function test	Performed
Manufacturer key number/ type code number	0603 / CNN 01131		
Emission standard	EURO6;WLTP;AP;PI/CI; M, N1 I	fine dust sticker	
Permitted total weight	2,060 kg	Empty weight	

Tyres

Mounted tyres

#	Tyre size	Type of tyre	Manufacturer	Tread depth
1)	225/45 R17 91W	Summer tyres on Light alloy	Goodyear	4mm / 4mm
2)	225/45 R17 91W	Summer tyres on Light alloy	Goodyear	4mm / 4mm

Additional tyres

#	Tyre size	Type of tyre	Manufacturer	Tread depth
1)	205/55 R16 91H	Winter tyres on Light alloy	Pirelli	5mm / 5mm
2)	205/55 R16 91H	Winter tyres on Light alloy	Pirelli	5mm / 5mm

Replacement

Typ	Tyre size	Type of tyre	Manufacturer	Tread depth
	Tirefit	Expiration date 02/2026		

Legend: Tread depth information for the left tire is listed first, for the right tire it is listed second on the axle in the direction of travel.



Equipment

Standard equipment

- Car2X
- black roof rails
- electromechanical power steering
- Seat belts: Three-point automatic seat belts for the outer rear seats
- Seats: ergoActive seat with 14-way adjustment and memory function on the driver's side
- 12-volt power outlet in the luggage compartment
- Telephone interface with inductive charging function
- Ambient lighting with logo projection
- Green thermal insulation glazing, sides and rear
- 2 USB-C ports on the front
- 2 USB charging ports on the rear of the center console
- Airbag: Head airbag system for front and rear passengers including front side airbags
- Adaptive Cruise Control (ACC) "stop & go"
- Exterior mirror housings and door handles in body color
- third brake light
- Decorative inlays "New Brushed Dark Metal"
- Digital Cockpit Pro, multicolor
- Electronic differential lock XDS
- Electronic stability program and electromechanical brake booster
- Automatic headlight control, with LED daytime running lights
- Pedestrian protection measures expanded
- luggage compartment cover
- Rear window heated
- Rear spoiler in car color
- Air conditioning system "Air Care Climatronic"
- Front headrests
- LED Plus headlights
- Illuminated strip between headlights and door handle recesses
- Front center armrest adjustable in height and length
- Non-smoking version
- Emergency call service
- Radio "Composition"
- Wheels: Alloy wheels (4) "Nottingham" 7.5 J x 17
- Rear bench seat undivided, backrest asymmetrically split and foldable with center armrest
- Chrome strip at the bottom of the side windows
- Keyless start system without safe locking
- Seat belts: Three-point automatic seat belt for the middle rear seat
- Seat belts: Three-point automatic seat belts at the front with height adjustment and belt tensioner
- Start-stop system
- Bumpers in body color
- Textile floor mats front and rear
- Electronic immobilizer
- Central locking without safe locking, with remote control and 2 remote folding keys
- Airbag for driver and front passenger
- 30-color ambient lighting
- App-Connect
- Electrically adjustable and heated exterior mirrors with memory function and passenger-side mirror lowering function.
- Diesel particulate filter and SCR catalyst
- Parking assistance
- Electronic parking brake including auto-hold function
- Driving assistant "Travel Assist" and lane keeping assistant "Lane Assist"
- Electric windows, front and rear
- Windscreen made of laminated safety glass, heat and sound insulating
- Transmission: 7-speed DSG
- Rear window wiper with intermittent function
- ISOFIX mounting points
- Rear headrests (3)
- LED reading lights at the front (2) and 2 at the rear
- LED taillights
- Steering wheel: Multifunction leather steering wheel with paddle shifters
- Fatigue detection
- Emergency braking assistant "Front Assist" with pedestrian and cyclist detection
- Tire pressure monitoring system (passive)
- Wheels: Tire Mobility Set



Extra equipment

- Towbar, foldable with electric release
- Paint finish: Metallic
- Package: Light and Sight Package incl. High Beam Control "Light Assist" (High Beam Control "Light Assist" - Automatically Dimming Interior Mirror - Multifunction Camera - Rain Sensor)
- Panoramic tilt/slide sunroof (2 LED reading lights at the front and 2 at the rear)
- Park Assist system including parking aid
- Proactive occupant protection system including rear side airbags (Proactive occupant protection system in conjunction with "Front Assist" - side airbags for the outer rear seats, including front side airbags and head airbag system)
- Rear View reversing camera
- Head-up display
- Package: Business Premium incl. navigation system (DSG) (6+1 speakers, App-Connect incl. App-Connect Wireless for Apple CarPlay, Android Auto, automatic distance control, adaptive cruise control (ACC) stop/go, speed limiter, emergency brake, pedestrian detection, travel assist, lane assist, emergency assist, leather multifunction steering wheel, heated, with shift paddles, multifunction camera, Discover Media navigation incl. streaming & internet (MP3, touchscreen, USB), cargo net partition, radio, heated windshield washer system, voice control, telephone interface, Comfort with inductive charging, textile floor mats, traffic sign recognition, heated front seats)

Brief expert findings

Documents submitted	At the time of the inspection, the vehicle registration certificate Part 2 (title) was available, but the vehicle registration certificate Part 1 (document) was not. (Copy)
VIN comparison	The vehicle identification number (VIN) was read from the vehicle and its conformity with the submitted documents was confirmed by the undersigned during the inspection.
Inspection	The inspection conditions were sufficient for the assessment of the vehicle. Lifting equipment and/or a pit were available for examining the vehicle.
Test drive	No test drive/shunting maneuver was carried out during the inspection of the vehicle.
Engine function test	An engine test run was performed.

Value reducing factors

No.	Component group	Description
1	Equipment	Tirefit filler - Expired - Replace
2	Bonnet	Bonnet - dent(s) - Smooth repair work
3	Side panel - rear right side	Side panel - Scratch(es) - Smart repair
4	Wheel / tyres	Tyre - front right side (Flanke) - Damaged - Replace
5	Wheel / tyres	Tyre - rear right side (Flanke) - Damaged - Replace
6	Tail light	Tail lamp - left side - Scratched - Replace
7	Side panel - rear left side	Side panel - Dent / paintcoat damage - Repair and paint
8	Rear bumper	Rear bumper - Scratched - Repair and paint
9	Door - front left side	Door - Dent / paintcoat damage - Repair and paint

Wear and tear

No.	Component group	Description
1	Front bumper	Front bumper - Stone chips - No deduction
2	Mudguard - right side	Mudguard - right side - dent(s) - No deduction
3	Door - front right side	Door - Scratch(es) - No deduction
4	Misc.	Main inspection - No evidence - No deduction

The vehicle shows signs of wear and tear commensurate with its age and use.



Order/Scope of Order

An order was placed to prepare a sales report for the described vehicle. This report includes the following:

- Description of key vehicle information
- Documentation of equipment features
(Delivery by third-party service providers)
- Documentation of damage, defects, missing parts
- Documentation of prior damage, unrepaired prior damage, repainting
- A brief visual or functional inspection of the equipment details, if possible.
(Functional testing of driver assistance systems is not included in the scope of services!)
- a photographic documentation of the vehicle

Basis for the order

This product is based on the guidelines for vehicle returns and valuations published by Alphabet Fleet GmbH. The expert makes the specific findings in each individual case objectively, within the framework of the prescribed standards, based on their own expertise.

The vehicle inspection takes place in a fully assembled, unassembled state.

Damage or defects that can only be detected during disassembly/diagnostic work or through further investigation remain within the realm of prognostic risk. An increased risk exists due to concealed defects caused by fraudulent misrepresentation and which were not identifiable by the expert.

Damage or defects resulting from normal use or wear and tear of the vehicle will be accepted in accordance with the applicable standard.

There was no explicit identification or monetary consideration of the expected features within the product.

Features which, in their nature and extent, slightly exceed normal use but do not constitute unacceptable damage, will be documented and indicated as signs of wear, if applicable.

Damage or defects that, according to the applicable standard, can no longer be attributed to normal use or wear and tear are listed under "Value Reducing Factors" in the product description.

Depending on the product specification, a monetary ID can be provided. If this takes place, the costs can be 100% or pro rata depending on the vehicle's age and mileage.

Previous damages

No apparent prior damage that had been repaired could be found on the vehicle.

Comments

Der beiliegende Winterradsatz ist nicht Bestandteil der Ausstattung.



Figure 1: Diagonal front (left)



Figure 2: Diagonal front (right)



Figure 3: Diagonal rear (left)



Figure 4: Diagonal rear (right)

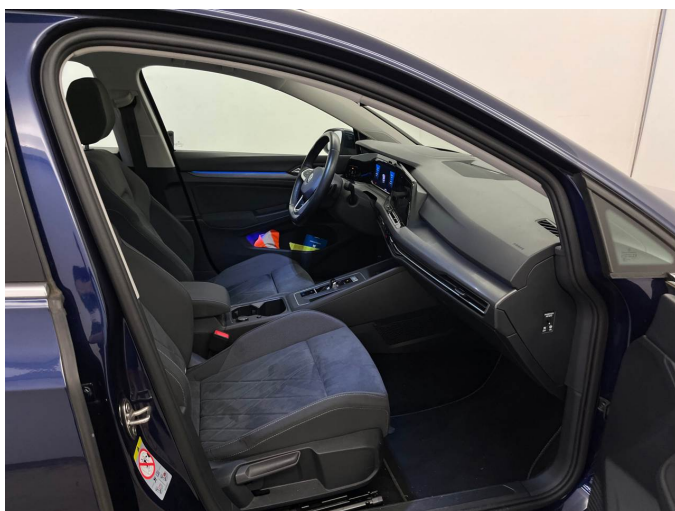


Figure 5: Interior - front



Figure 6: Interior - rear



Figure 7: Instrument cluster



Figure 8: Instrument panel



Figure 9: Interior 360° view



Figure 10: Cargo area

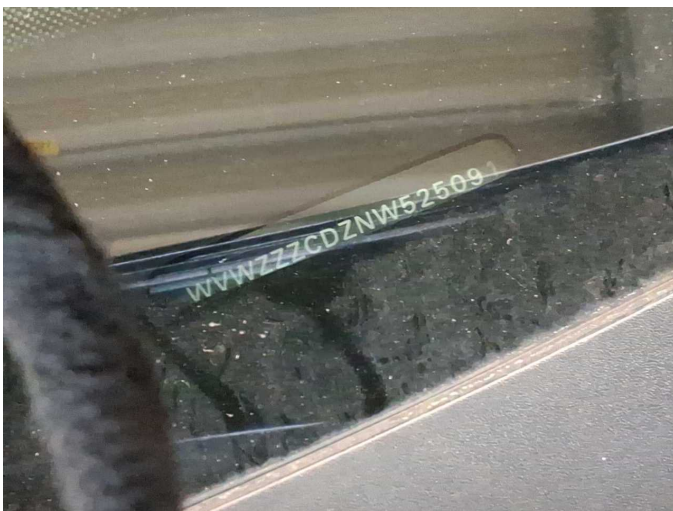


Figure 11: VIN



Figure 12: Mounted tyres



Figure 13: Documents



Figure 14: Additional tyres

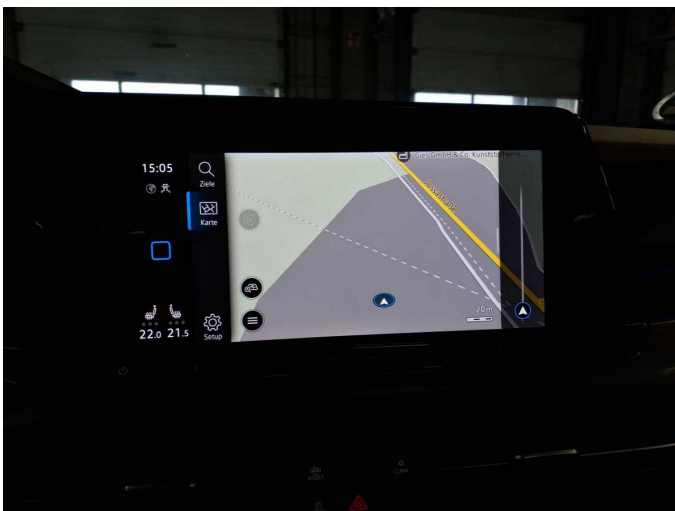


Figure 15: Navigation



Figure 16: Misc.



Figure 17: Misc.



Figure 18: Misc.



Figure 19: Misc.



Figure 20: Misc.

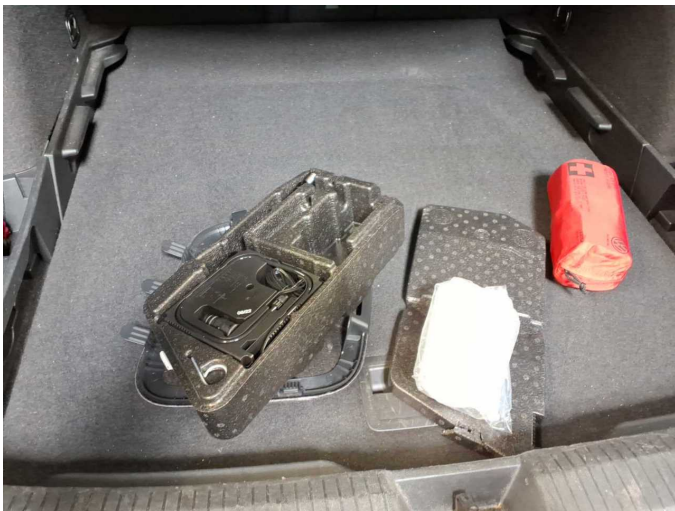


Figure 21: Misc.



Figure 22: Misc.



Figure 23: Misc.



Figure 24: Misc.



Figure 25: Misc.

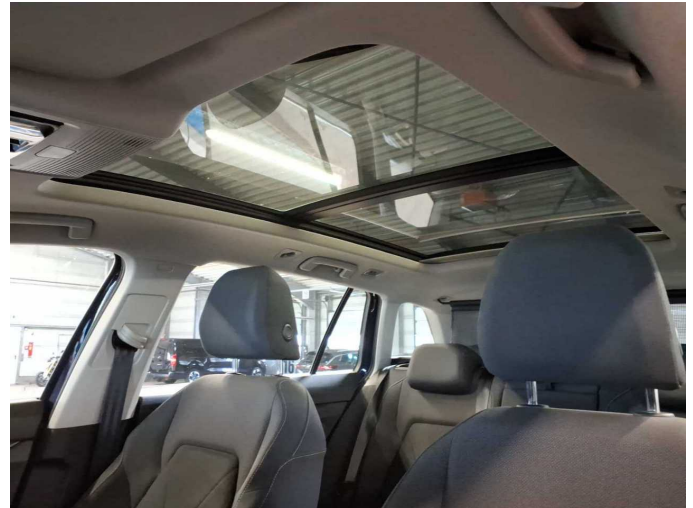
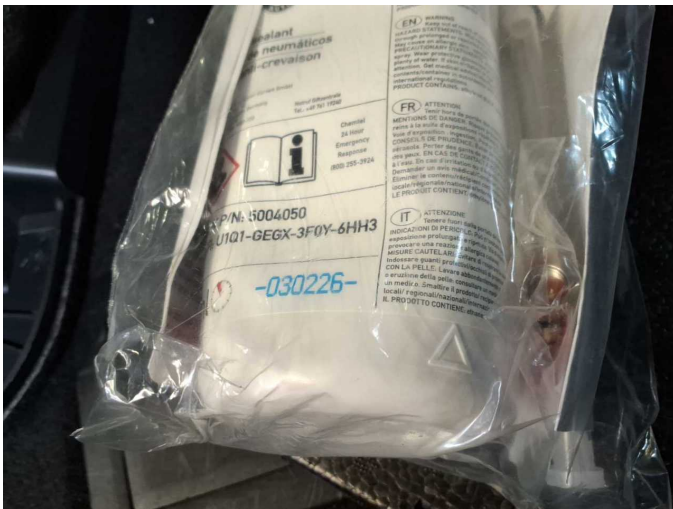
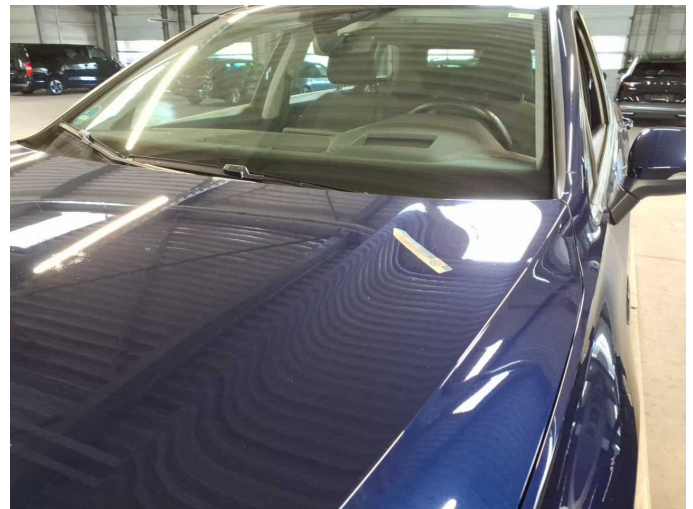


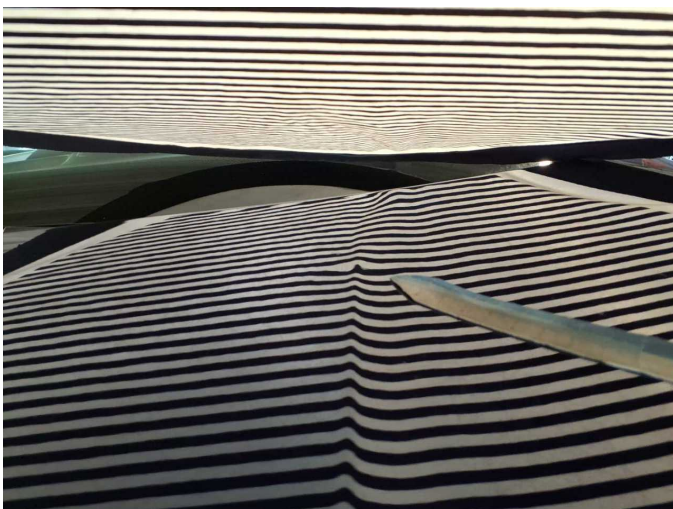
Figure 26: Misc.



Damage 1: Equipment: Tirefit filler - Expired - Replace



Damage 2: Bonnet: Bonnet - dent(s) - Smooth repair work



Damage 2: Bonnet: Bonnet - dent(s) - Smooth repair work



Damage 3: Side panel - rear right side: Side panel - Scratch(es) - Smart repair



Damage 3: Side panel - rear right side: Side panel - Scratch(es) - Smart repair



Damage 3: Side panel - rear right side: Side panel - Scratch(es) - Smart repair



Damage 4: Wheel / tyres: Tyre - front right side (Flanke) - Damaged - Replace



Damage 4: Wheel / tyres: Tyre - front right side (Flanke) - Damaged - Replace



Damage 5: Wheel / tyres: Tyre - rear right side (Flanke) - Damaged - Replace



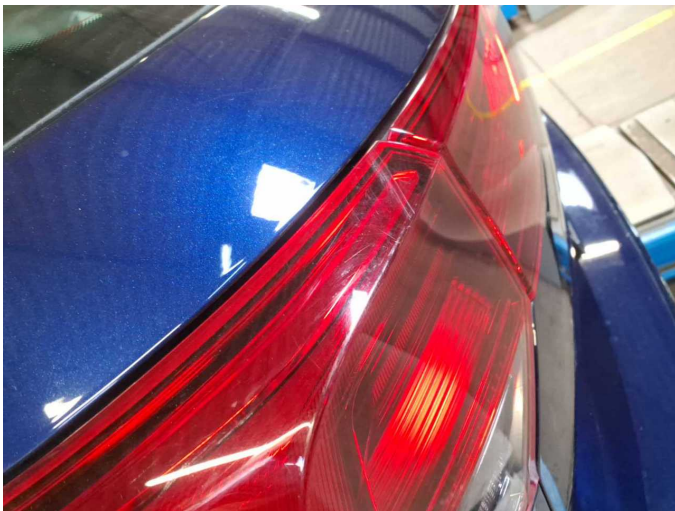
Damage 5: Wheel / tyres: Tyre - rear right side (Flanke) - Damaged - Replace



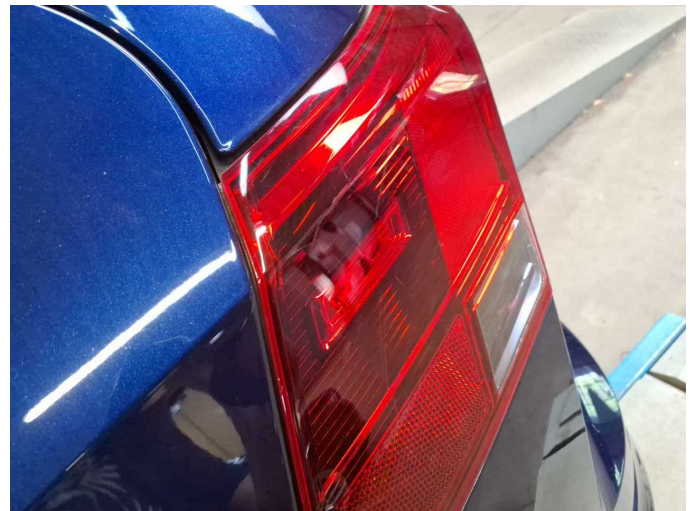
Damage 6: Tail light: Tail lamp - left side - Scratched - Replace



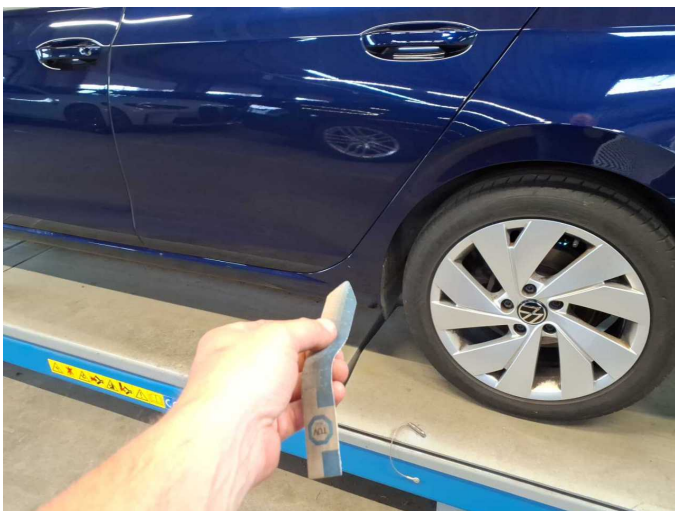
Damage 6: Tail light: Tail lamp - left side - Scratched - Replace



Damage 6: Tail light: Tail lamp - left side - Scratched - Replace



Damage 6: Tail light: Tail lamp - left side - Scratched - Replace



Damage 7: Side panel - rear left side: Side panel - Dent / paintcoat damage - Repair and paint



Damage 7: Side panel - rear left side: Side panel - Dent / paintcoat damage - Repair and paint



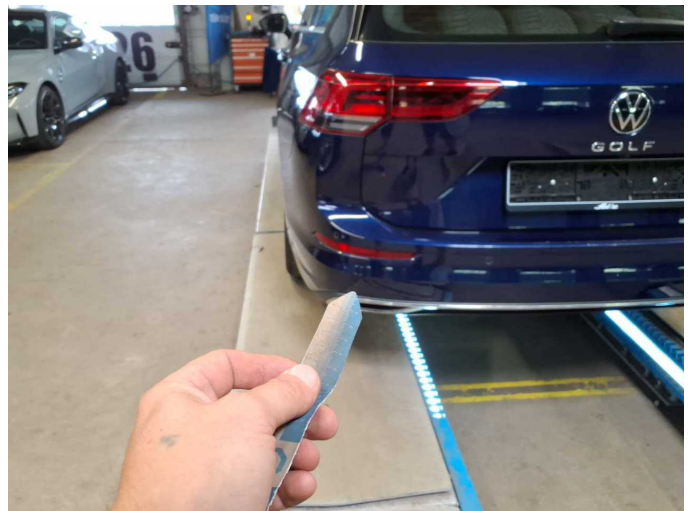
Damage 7: Side panel - rear left side: Side panel - Dent / paintcoat damage - Repair and paint



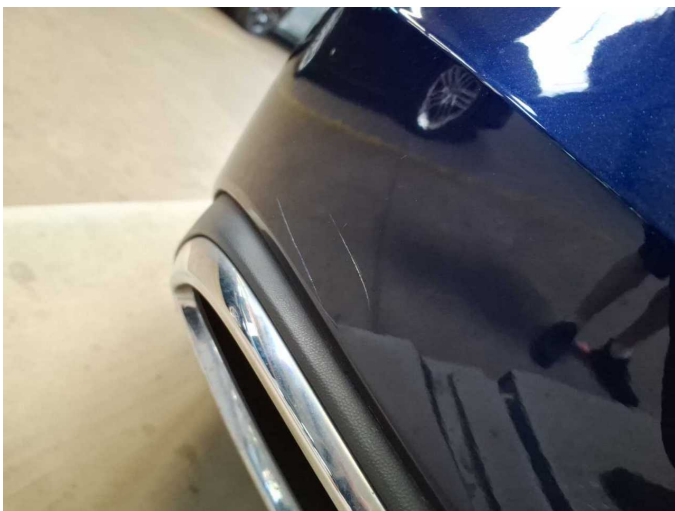
Damage 7: Side panel - rear left side: Side panel - Dent / paintcoat damage - Repair and paint



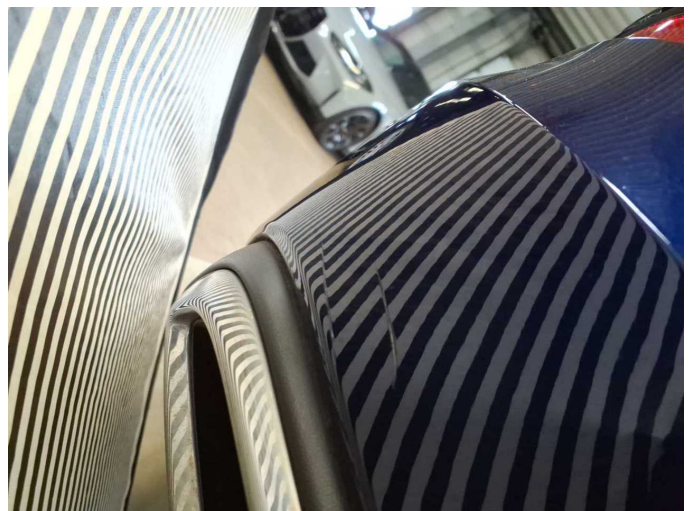
Damage 7: Side panel - rear left side: Side panel - Dent / paintcoat damage - Repair and paint



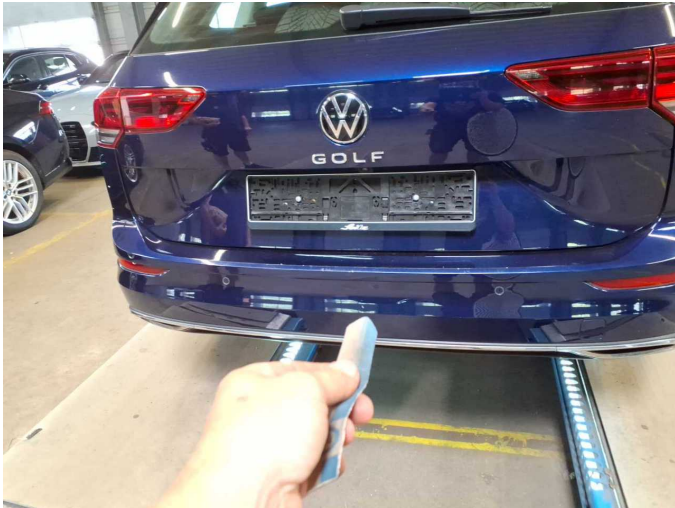
Damage 8: Rear bumper: Rear bumper - Scratched - Repair and paint



Damage 8: Rear bumper: Rear bumper - Scratched - Repair and paint



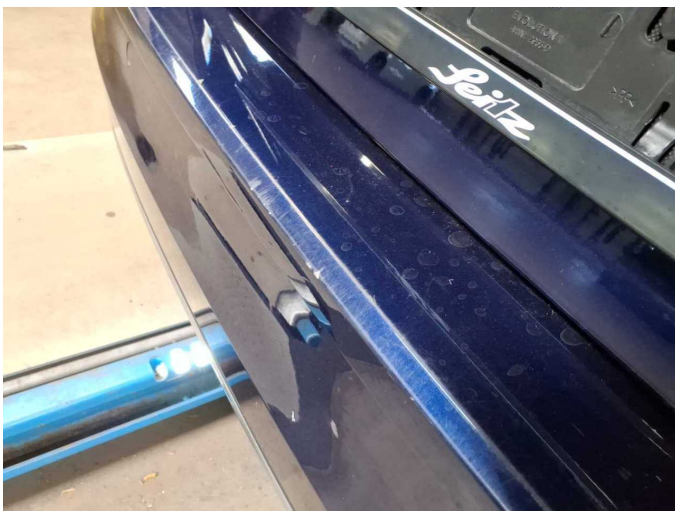
Damage 8: Rear bumper: Rear bumper - Scratched - Repair and paint



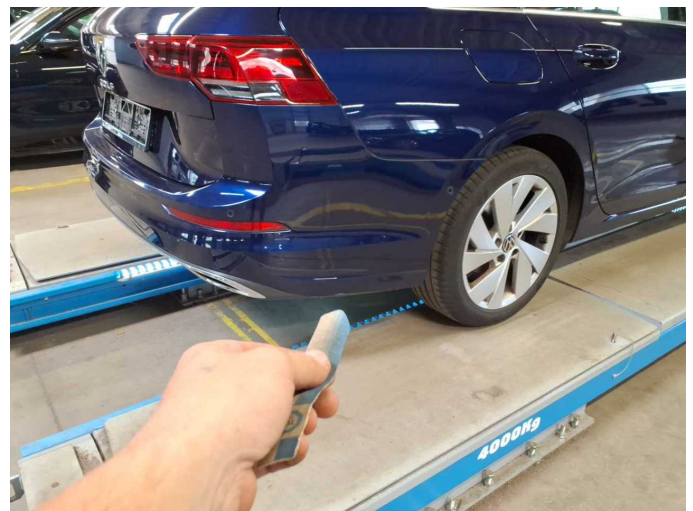
Damage 8: Rear bumper: Rear bumper - Scratched - Repair and paint



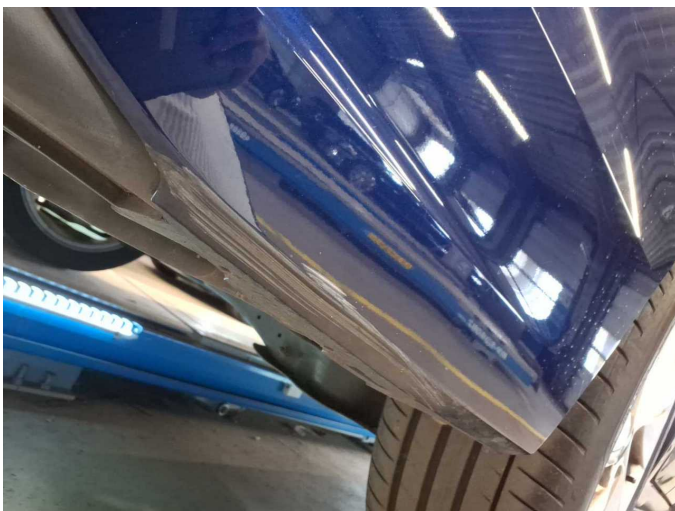
Damage 8: Rear bumper: Rear bumper - Scratched - Repair and paint



Damage 8: Rear bumper: Rear bumper - Scratched - Repair and paint



Damage 8: Rear bumper: Rear bumper - Scratched - Repair and paint



Damage 8: Rear bumper: Rear bumper - Scratched - Repair and paint



Damage 9: Door - front left side: Door - Dent / paintcoat damage - Repair and paint



Damage 9: Door - front left side: Door - Dent / paintcoat damage - Repair and paint



Damage 9: Door - front left side: Door - Dent / paintcoat damage - Repair and paint



Damage 9: Door - front left side: Door - Dent / paintcoat damage - Repair and paint



Wartungshistorie

(gemäß Auftraggeber Informationen)

Fahrgestellnummer: WVVZZZCDZNW525091
Hersteller / Modell: VOLKSWAGEN VOLKSWAGEN Golf Variant 2.0 TDI SCR DSG
Style

Datum	KM-Stand	Beschreibung
31.12.2025	80.165	Reparatur Sonstiges; Systemtest/Eigendiagnose
09.12.2025	80.016	Reparatur Sonstiges; Systemtest/Eigendiagnose
25.11.2025	78.552	Motoröl b. Wartung; Ölfilter ern; Ölwechsel; Wartung Sonstiges
25.07.2025	71.000	AU
21.08.2024	54.427	Bremsflüssigkeit; Bremsflüssigkeit ern; Motoröl b. Wartung; Ölfilter ern; Regelwartungsdienst; Wartung Sonstiges
08.08.2023	27.359	Motoröl b. Wartung; Ölfilter ern; Regelwartungsdienst; Wartung Sonstiges