

## Expertise

Protocol number: 45478435  
Order No. / Reference: 26367681  
Inspection date: 13 May 2026

Manufacturer: Audi

Model: A4 Avant 35 TDI S tronic S line

VIN: WAUZZZF42PA045972



### Vehicle details

#### Manufacturer / Type / Model / Equipment

Audi A4 Avant 35 TDI S tronic S line

**Vehicle Identification number** WAUZZZF42PA045972

**Mileage (Read)** 160,650 km

**First registration** 7 Feb 2023

**Number of holders** 1

**Next periodical technical inspection** 02/2028  
(Report on hand)

**Power / Engine displacement** 120 kw / 1,968 ccm

**Fuel type / Cylinder** Hybrid Diesel / E / 4

**Gearbox / Number of gears** Automatic / 7

**Type of drive** Front drive

**Type of vehicle** Station wagon

**Colour / colour code** Mythossschwarz Metallic  
(Y9T)

**Doors / Seats** 5 / 5

**Upholstery type** Cloth

**Colour of upholstery** Black-Anthracite



## Vehicle details

<b>Maintenance booklet / proof</b>	digital proof / complete	<b>Next maintenance in</b>	15,400 km
<b>Last service on / at</b>	02/2026 at 150,261 km		
<b>Key is / should be</b>	2 / 2	<b>FZG documents</b>	ZB#2 (B) was available (copy), ZB#1 (S) was not available.
		<b>Letter No.</b>	GS356243
<b>Previous damage / Accident</b>	Detectable	<b>Repainting</b>	None detectable
<b>Inspection conditions</b>	sufficient	<b>Lifting equipment / pit</b>	yes
<b>Test drive</b>	Not performed	<b>Engine function test</b>	Performed
<b>Manufacturer key number/ type code number</b>	0588 / BPK 01081		
<b>Emission standard</b>	EURO6;WLTP;AP;PI/CI; M, N1 I	<b>fine dust sticker</b>	
<b>Permitted total weight</b>	2,165 kg	<b>Empty weight</b>	

## Tyres

### Mounted tyres

#	Tyre size	Type of tyre	Manufacturer	Tread depth
1)	205/60 R16 92H	Winter tyres on Light alloy	Dunlop	5mm / 5mm
2)	205/60 R16 92H	Winter tyres on Light alloy	Dunlop	5mm / 5mm

### Additional tyres

#	Tyre size	Type of tyre	Manufacturer	Tread depth
1)	245/40 R18 97Y	Summer tyres on Light alloy	Continental	3mm / 3mm
2)	245/40 R18 97Y	Summer tyres on Light alloy	Goodyear	3mm / 3mm

### Replacement

Typ	Tyre size	Type of tyre	Manufacturer	Tread depth
	Tirefit	Expiration date 10/2026		

**Legend: Tread depth information for the left tire is listed first, for the right tire it is listed second on the axle in the direction of travel.**



## Equipment

### Standard equipment

- AdBlue tank (12 liters)
- Airbag: Front side airbags and head airbag system
- Anti-lock braking system (ABS)
- Audi connect emergency call & service with Audi connect Remote & Control
- Exterior mirror housings in body color
- third brake light, raised
- Black roof rails
- Diesel particulate filter (DPF)
- Door sill trims with aluminum inlay at the front, illuminated, with S lettering
- Electronic Stability Control (ESC)
- Chassis: Sport chassis
- Window channel strips in black (rubber)
- front and rear floor mats
- Transmission: S tronic 7-speed
- Top speed limited to 210 km/h
- Interior mirror dimming
- ISOFIX child seat attachment and Top Tether for the outer rear seats
- Loading floor
- LED taillights
- Steering column, manually adjustable in height and axis
- Light/rain sensor
- front center armrest
- Wheel: Alloy wheels, 5-Y-spoke (S-design)
- Radio: MMI Radio plus
- Radio accessories: Digital radio reception (DAB)
- Tire repair kit
- Electromechanical power steering
- Seats: Standard front seats
- Seats: Front seats manually adjustable
- First aid kit with warning triangle
- Electronic immobilizer
- Central locking "Keyless-Go" without deadbolt
- Airbag for driver and front passenger
- Accent areas matte black
- Traction control (ASR)
- Audi pre sense city
- Electrically adjustable and heated exterior mirrors
- Vehicle tool kit
- S line roof spoiler
- Decorative inlays diamond lacquer silver grey
- Tachometer
- Electromechanical parking brake
- Electronic Differential Lock (EDS)
- Driver Information System
- electric window regulator
- Remote key, without SafeLock
- Cruise control system with speed limiter
- rear window wiper
- Interior lighting
- Child lock
- boot floor mat
- Headrests (5)
- Manual cargo cover
- Steering wheel: Leather steering wheel in 3-spoke design with multifunction
- Mild hybrid
- Non-smoking version
- Wheel: Tires optimized for rolling resistance, speed-limited
- Radio accessories: 8 speakers (passive) front and rear
- Tire pressure monitoring system
- Headlights using LED technology
- Fabric seat covers Index
- Seats: Rear seat backrest foldable
- Start-stop system
- Glazing: Windscreen in heat-insulating and acoustic glazing



## Extra equipment

- Audi connect Navigation & Infotainment (Online Points of Interest - Online Traffic Information Plus - Hazard Information - Weather Information - Wi-Fi Hotspot - Online News - Navigation with Google Satellite Maps - Online Search for Navigation Destinations - Online Voice Input - Highly Detailed 3D City Display - On-Street Parking - Online Radio - Hybrid Radio - User Profiles - Amazon Alexa Integration - Online Media Streaming - myAudi Navi. - Online Traffic Sign Information. - HoloRide Interface)
- Black fabric headliner
- Parking aid plus (Acoustic and visual parking aid front and rear assists with parking and maneuvering. With selective, visual display of the distance to detected objects in the MMI display, depending on the current steering angle and direction of travel. The virtual lane indicator also provides lateral guide lines that are calculated in advance based on the currently selected steering angle. Measurement is carried out by ultrasonic sensors, discreetly integrated into the bumpers.)
- High-beam assist (within the system's limitations, it automatically detects oncoming headlights, taillights of other road users, and light sources in built-up areas. Depending on the traffic situation, the high beams are automatically switched on or off. The system thus improves the driver's visibility and increases comfort.)
- Comfort automatic climate control 3-zone (in addition to the automatic climate control: - climate control unit with large TFT display and capacitive rocker switches - electronically regulates the air temperature and distribution individually for driver and front passenger - additional climate control unit for setting the rear compartment temperature in the rear center console - automatic recirculation control with dust and odor separating allergen filter - residual heat utilization)
- Storage and luggage compartment package (flexible transport of items and comfort while traveling, consisting of: - storage net on the back of the front seatbacks - cupholder in the rear center armrest - storage compartment on the driver's side - lockable glove compartment in the luggage compartment: - luggage compartment net - net recesses left and right - tension strap right)
- Business Package (MMI Navigation plus with MMI touch (including driver information system with color display) - Audi phone box - Leather steering wheel in 3-spoke design with multifunction plus - Heated front seats - Automatically dimming, frameless interior mirror - Electrically adjustable, heated and folding exterior mirrors, automatically dimming on both sides - Rear parking aid - High-beam assistant - Manual sunshade for the rear door windows)
- Radio accessories: Audi sound system (10 speakers including center speaker and subwoofer - 6-channel amplifier - total output of 180 watts)
- Seat covers in fabric system (seat center panels in fabric system black or black-red - seat side bolsters, thigh support, headrests in solid black fabric)
- Audi pre sense basic (within the system's limits, it initiates preventive safety measures for the occupants by networking and coordinating different vehicle systems. In unstable driving conditions, the front seat belts are electrically tightened. Depending on the situation, the windows close. The hazard warning lights are activated to warn following traffic.)
- Electrically adjustable, heated and folding exterior mirrors, automatically dimming on both sides (including curb view function for passenger-side exterior mirror with integrated LED turn signal, including heated windshield washer nozzles; the curb view function folds the passenger-side mirror down when reverse gear is engaged, giving the driver a better view of the curb edge)
- Driver information system with color display (high-resolution 7" color display - display content: speed, time, mileage, outside temperature, fuel warning with remaining range, gear shift indicator, current radio station or music track, radio and media lists, telephone menu (in conjunction with multifunction steering wheel), navigation information (if equipped). On-board computer with short- and long-term memory - including break recommendation)
- Electrically operated tailgate (The tailgate can be opened electrically by pressing the button on the vehicle key, in the driver's door, or the soft-touch button on the tailgate handle. Closing the tailgate is just as easy and convenient: simply press the button on the inside of the tailgate, the button in the driver's door, or the button on the vehicle key. A soft-close mechanism makes manual closing easier when necessary.)
- Comfort center armrest at the front (adjustable in tilt and longitudinally sliding or completely foldable)
- Paint finish: Metallic
- Steering wheel: Leather steering wheel in a 3-spoke design with multifunction plus (The steering wheel impresses with its high-quality look and aluminum trim and feels good in the hand. Height and reach of the steering wheel are manually adjustable. For convenient operation of the extensive standard and optional infotainment features, the steering wheel is equipped with 12 multifunction buttons. It also includes paddle shifters for manually changing gears with an automatic transmission.)
- Black Optics Package (adds black accents to the exterior in the area of the Audi Singleframe grille, the trim strips on the side windows, the tailgate trim strip, and the front and rear bumpers. Design varies depending on model and equipment)
- Package: Audi phone box PAO opt-out package
- Wheel: Audi new car tire warranty (36-month term from vehicle handover to the first customer)



- Seats: 4-way lumbar support (electrically adjustable, horizontally and vertically)
- Seats: Driver's seat electrically adjustable (with electric adjustment of seat height, seat longitudinal position, seat tilt and backrest tilt for the driver's seat - passenger seat manually adjustable)
- front sports seats
- Glazing: Acoustic glazing for front door windows (Front door windows with acoustic glazing provide improved external noise insulation.)
- Reversing camera (facilitates maneuvering by displaying the area behind the vehicle on the MMI display with dynamic and static aids. Two modes can be selected: perpendicular parking and, for vehicles with factory-installed trailer hitches, trailer mode. Depending on the selected mode, the calculated lane and guide lines are displayed. The reversing camera is discreetly integrated into the tailgate handle. Activation occurs when reverse gear is engaged.)
- Front seat heating (heats seat and backrest center panels; with leather upholstery, sport seats and S sport seats also seat side bolsters - individually adjustable in multiple stages for driver and front passenger side via the climate control unit)
- Glazing: Sun protection glazing, darkened for acoustic glazing (rear window, rear door and side windows darkened)

### Brief expert findings

Documents submitted	At the time of the inspection, the vehicle registration certificate Part 2 (title) was available, but the vehicle registration certificate Part 1 (document) was not. (Copy)
VIN comparison	The vehicle identification number (VIN) was read from the vehicle and its conformity with the submitted documents was confirmed by the undersigned during the inspection.
Inspection	The inspection conditions were sufficient for the assessment of the vehicle. Lifting equipment and/or a pit were available for examining the vehicle.
Test drive	No test drive/shunting maneuver was carried out during the inspection of the vehicle.
Engine function test	An engine test run was performed.

### Value reducing factors

No.	Component group	Description
1	Front bumper	Front bumper (Sandstrahleffekt) - Stone chips - Paint

### Wear and tear

No.	Component group	Description
1	Bonnet	Bonnet - Stone chips - No deduction
2	Mudguard - left side	Mudguard - left side - Stone chips - No deduction
3	Mudguard - right side	Mudguard - right side - Stone chips - No deduction
4	Roof	Roof - Stone chips - No deduction

The vehicle shows signs of wear and tear commensurate with its age and use.

### Previous damages

No.	Previous damage	Extent of damage (Net)
1	Front, Side right, Provided by user / customer, from 3 Feb 2026	

### Accident damages

No.	Accident
1	Rear, Side right



## Order/Scope of Order

An order was placed to prepare a sales report for the described vehicle. This report includes the following:

- Description of key vehicle information
- Documentation of equipment features  
*(Delivery by third-party service providers)*
- Documentation of damage, defects, missing parts
- Documentation of prior damage, unrepaired prior damage, repainting
- A brief visual or functional inspection of the equipment details, if possible.  
*(Functional testing of driver assistance systems is not included in the scope of services!)*
- a photographic documentation of the vehicle

## Basis for the order

This product is based on the guidelines for vehicle returns and valuations published by Alphabet Fleet GmbH. The expert makes the specific findings in each individual case objectively, within the framework of the prescribed standards, based on their own expertise.

The vehicle inspection takes place in a fully assembled, unassembled state.

Damage or defects that can only be detected during disassembly/diagnostic work or through further investigation remain within the realm of prognostic risk. An increased risk exists due to concealed defects caused by fraudulent misrepresentation and which were not identifiable by the expert.

Damage or defects resulting from normal use or wear and tear of the vehicle will be accepted in accordance with the applicable standard.

There was no explicit identification or monetary consideration of the expected features within the product.

Features which, in their nature and extent, slightly exceed normal use but do not constitute unacceptable damage, will be documented and indicated as signs of wear, if applicable.

Damage or defects that, according to the applicable standard, can no longer be attributed to normal use or wear and tear are listed under "Value Reducing Factors" in the product description.

Depending on the product specification, a monetary ID can be provided. If this takes place, the costs can be 100% d or pro rata depending on the vehicle's age and mileage.

## Previous damages

Non-repaired previous damages were found at the vehicle. The necessary repair costs are listed in the expert report or if necessary, are listed in detail in a separately enclosed repair cost calculation.

## Comments

- Winterradsatz ist kein Bestandteil des Auslieferungsumfangs.



Figure 1: Diagonal front (left)



Figure 2: Diagonal front (right)



Figure 3: Diagonal rear (left)



Figure 4: Diagonal rear (right)



Figure 5: Interior - front



Figure 6: Interior - rear



Figure 7: Instrument cluster



Figure 8: Instrument panel



Figure 9: Interior 360° view



Figure 10: Cargo area

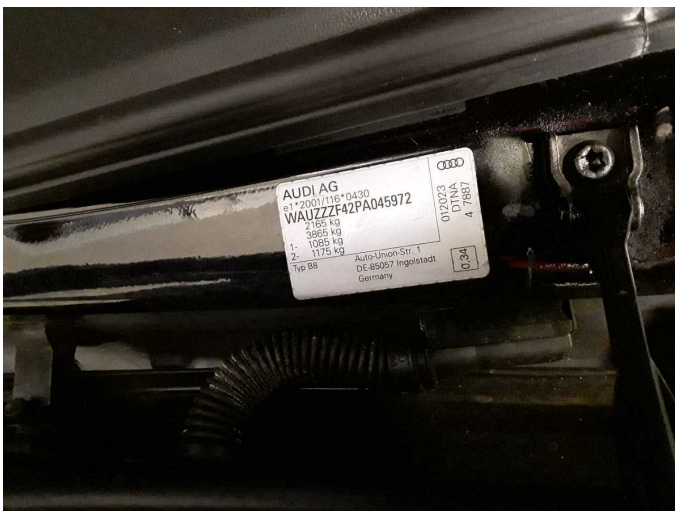


Figure 11: VIN



Figure 12: Mounted tyres



Figure 13: Documents



Figure 14: Documents



Figure 15: Additional tyres



Figure 16: Navigation



Figure 17: Misc.

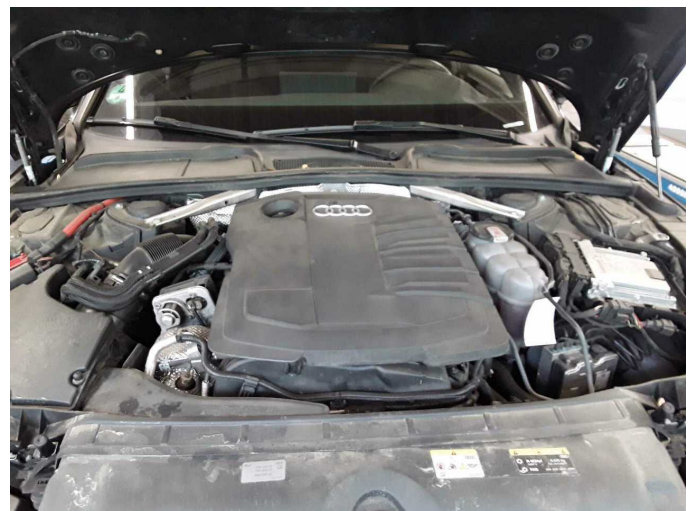


Figure 18: Misc.



Figure 19: Misc.



Figure 20: Misc.



Figure 21: Misc.



Figure 22: Misc.



Figure 23: Misc.



Figure 24: Misc.



Figure 25: Misc.



Figure 26: Misc.



Figure 27: Misc.



Figure 28: Misc.



Figure 29: Misc.



Figure 30: Misc.



**Damage 1:** Front bumper: Front bumper (Sandstrahleffekt) - Stone chips - Paint



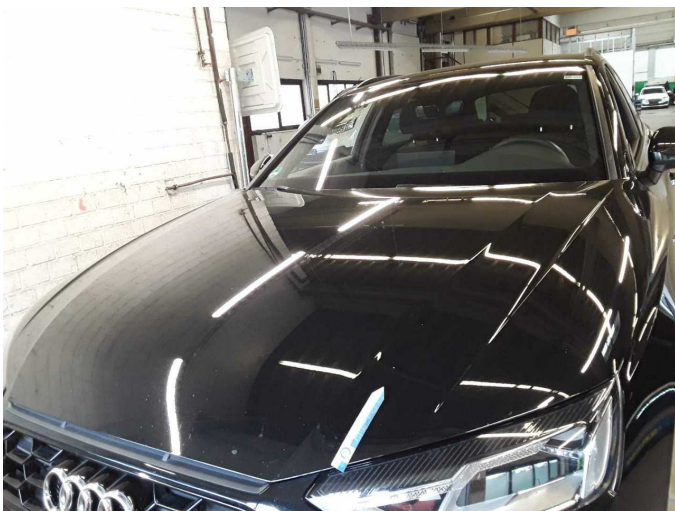
**Damage 1:** Front bumper: Front bumper (Sandstrahleffekt) - Stone chips - Paint



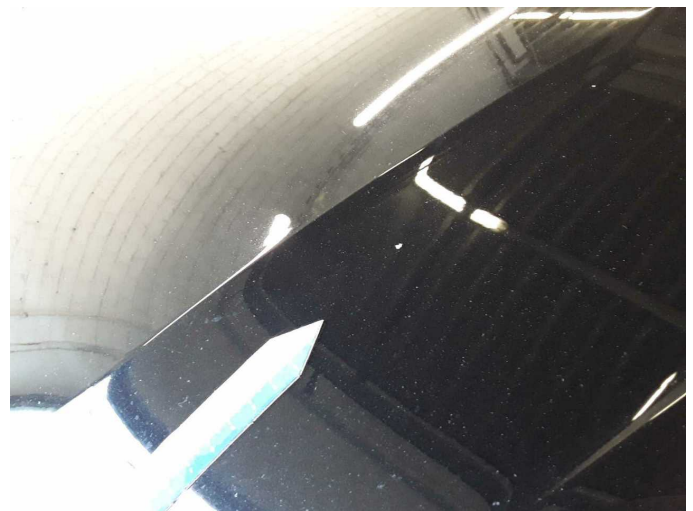
**Damage 1:** Front bumper: Front bumper (Sandstrahleffekt) - Stone chips - Paint



**Damage 1:** Front bumper: Front bumper (Sandstrahleffekt) - Stone chips - Paint



**Wear and tear 1:** Bonnet: Bonnet - Stone chips - No deduction



**Wear and tear 1:** Bonnet: Bonnet - Stone chips - No deduction



**Wear and tear 1:** Bonnet: Bonnet - Stone chips - No deduction



**Wear and tear 2:** Mudguard - left side: Mudguard - left side - Stone chips - No deduction



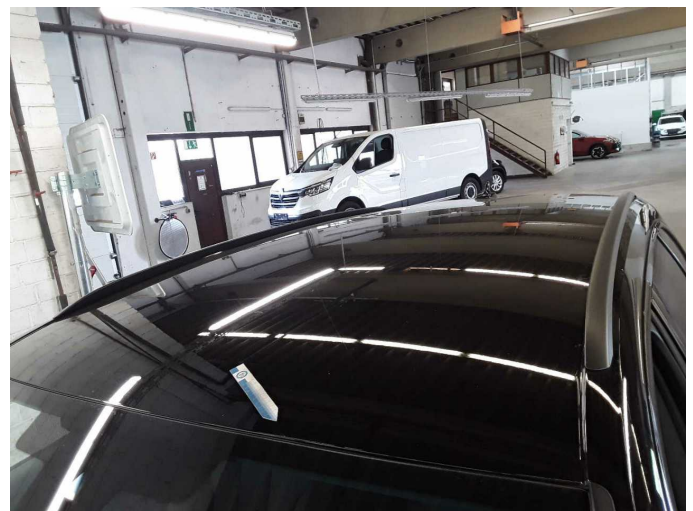
**Wear and tear 2:** Mudguard - left side: Mudguard - left side - Stone chips - No deduction



**Wear and tear 3:** Mudguard - right side: Mudguard - right side - Stone chips - No deduction



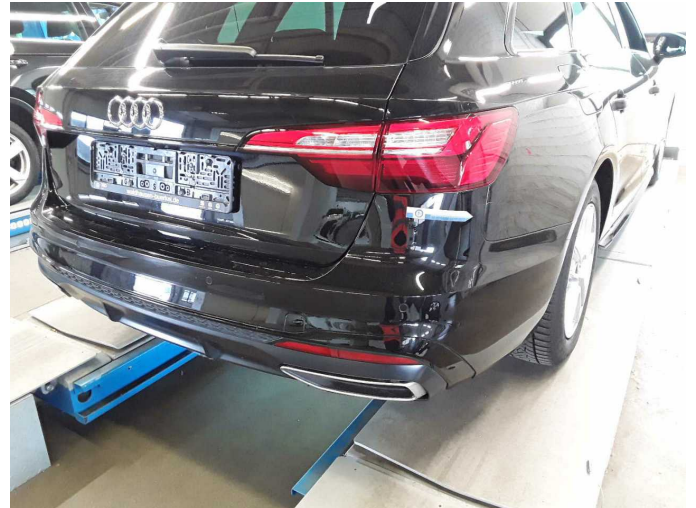
**Wear and tear 3:** Mudguard - right side: Mudguard - right side - Stone chips - No deduction



**Wear and tear 4:** Roof: Roof - Stone chips - No deduction



**Wear and tear 4:** Roof: Roof - Stone chips - No deduction



**Accident 1:** Rear, Side right



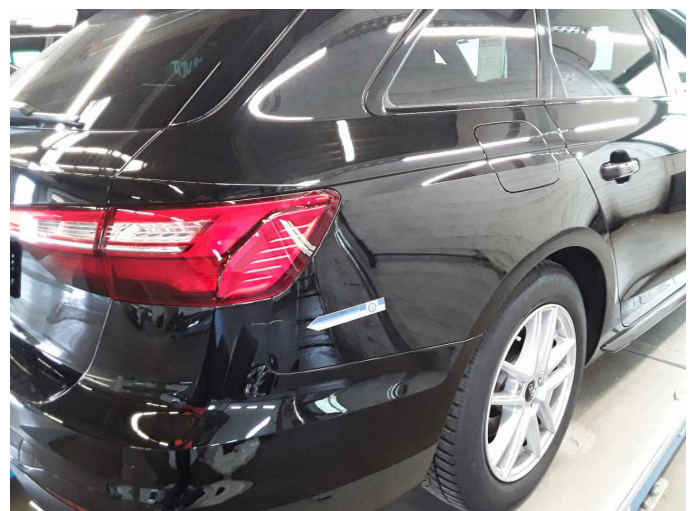
**Accident 1:** Rear, Side right



**Accident 1:** Rear, Side right



**Accident 1:** Rear, Side right



**Accident 1:** Rear, Side right



**Accident 1:** Rear, Side right



# Wartungshistorie

(gemäß Auftraggeber Informationen)

Fahrgestellnummer: WAUZZZF42PA045972  
Hersteller / Modell: AUDI AUDI A4 Avant 35 TDI S tronic S line

Datum	KM-Stand	Beschreibung
02.02.2026	150.261	HU + AU; Motoröl b. Wartung; Ölfilter ern; Regelwartungsdienst; Wartung Sonstiges
12.06.2025	120.981	Bremsbelagfühler ern; Bremse Sonstiges; Bremsflüssigkeit; Bremsflüssigkeit ern; Bremsklötze hinten; Bremsklötze vorne; Bremsscheiben + Klötze h; Bremsscheiben + Klötze v; Bremsscheiben hinten; Bremsscheiben vorne; Getriebeöl ern/prüfen; Kraftstofffilter ern; Motoröl b. Wartung; Ölfilter ern; Regelwartungsdienst; Reparatur Sonstiges; Wartung Sonstiges
14.10.2024	86.386	Luffiltereinsatz ern; Motoröl b. Wartung; Ölfilter ern; Regelwartungsdienst; Wartung Sonstiges
25.03.2024	56.513	Bremsbelagfühler ern; Bremse Sonstiges; Bremsklötze hinten; Bremsklötze vorne; Bremsscheiben vorne; Getriebeöl ern/prüfen; Kraftstofffilter ern; Motoröl b. Wartung; Ölfilter ern; Regelwartungsdienst; Reparatur Sonstiges; Wartung Sonstiges
12.10.2023	32.460	Regelwartungsdienst
07.09.2023	25.647	Motoröl b. Wartung; Ölfilter ern; Ölwechsel; Wartung Sonstiges