

## Expertise

Protocol number: 45979705  
Order No. / Reference: 26512354  
Inspection date: 16 Jun 2026

Manufacturer: Volvo

Model: XC60 B4 D Plus Dark

VIN: YV1UZK5V6P1323815



### Vehicle details

#### Manufacturer / Type / Model / Equipment

Volvo XC60 B4 D Plus Dark

**Vehicle Identification number** YV1UZK5V6P1323815

**Mileage (Read)** 77,659 km

**First registration** 20 Mar 2023

**Number of holders** 1

**Power / Engine displacement** 145 kw / 1,969 ccm

**Fuel type / Cylinder** Hybrid Diesel / E / 4

**Gearbox / Number of gears** Automatic / 8

**Type of drive** Front drive

**Type of vehicle** SUV

**Colour / colour code** Denim Blue Metallic

**Doors / Seats** 5 / 5

**Upholstery type** Leather

**Colour of upholstery** Black



## Vehicle details

<b>Maintenance booklet / proof</b>	digital proof / complete	<b>Next maintenance in</b>	245 Tag(e)
<b>Last service on / at</b>	02/2026 at 71,544 km		
<b>Key is / should be</b>	2 / 2	<b>FZG documents</b>	ZB#2 (B) was available (copy), ZB#1 (S) was not available.
		<b>Letter No.</b>	GQ214630
<b>Previous damage / Accident</b>	Detectable	<b>Repainting</b>	None detectable
<b>Inspection conditions</b>	sufficient	<b>Lifting equipment / pit</b>	yes
<b>Test drive</b>	Not performed	<b>Engine function test</b>	Performed
<b>Manufacturer key number/ type code number</b>	9101 / BTJ 00013		
<b>Emission standard</b>	EURO6;WLTP;AP;PI/CI; M, N1 I	<b>fine dust sticker</b>	
<b>Permitted total weight</b>	2,460 kg	<b>Empty weight</b>	

## Tyres

### Mounted tyres

#	Tyre size	Type of tyre	Manufacturer	Tread depth
1)	235/60 R18 107H	Winter tyres on Light alloy	Michelin	5mm / 5mm
2)	235/60 R18 107H	Winter tyres on Light alloy	Michelin	6mm / 6mm

### Additional tyres

#	Tyre size	Type of tyre	Manufacturer	Tread depth
1)	235/55 R19 105V	Summer tyres on Light alloy	Continental	3mm / 3mm
2)	235/55 R19 105V	Summer tyres on Light alloy	Continental	3mm / 3mm

### Replacement

Typ	Tyre size	Type of tyre	Manufacturer	Tread depth
	Tirefit	Expiration date 01/2027		

**Legend: Tread depth information for the left tire is listed first, for the right tire it is listed second on the axle in the direction of travel.**

TÜV SÜD Auto Partner GmbH  
Wiesenring 2  
04159 Leipzig

Inspection location  
Hartmann Fleet Professionals GmbH  
Industriestraße 11  
36272 Niederaula



## Equipment



## Standard equipment

- ABS - Anti-lock Braking System
- Passenger side airbag can be deactivated
- Airbag, driver's knee airbag
- Active safety belts with belt tensioners
- Ambient lighting
- Electrically folding exterior mirrors
- Heated exterior mirrors and rear window (automatic)
- Hill Descent Control (HDC)
- Fog sensor for automatic activation of the defroster function
- On-board computer
- Roof edge spoiler
- Diesel particulate filter
- Digital Instrumentation 2nd Gen.
- Electronic Stability Control (ESC)
- Enhanced air quality system with fine dust filtration according to air quality standard PM2.5
- Automatic emergency braking
- Transmission: 8-speed automatic transmission
- Automatic tailgate
- Interior lighting
- ISOFIX mounting for the outer rear seats
- Keyless Start
- Automatic climate control with separate temperature control for driver and front passenger
- Stainless steel loading sill protector in the luggage compartment
- LED headlights "Thor's Hammer"
- Steering wheel: Three-spoke steering wheel, leather-free
- Air quality system with activated carbon filter
- Front center armrest with integrated storage compartment and cup holders
- Package: Seat Comfort Package
- Electric parking brake
- Upholstery: Leather/leatherette comfort seats, anthracite
- Radio accessories: Digital radio reception (DAB+)
- Rain sensor
- Tire pressure monitoring system
- Wheels: 19" alloy wheels, 5-V-spoke sport design, diamond cut/high-gloss black
- Safety Assistance
- Whiplash protection system WHIPS
- Safety braking system with disc brakes all around (internally ventilated)
- Sport exterior mirrors in high-gloss black
- Sport front grille with horizontal struts and grille surround in high-gloss black
- Phone: Inductive smartphone charging system
- Glazing: Colored glazing
- Preparation for Trailer Stability Assist (TSA)
- Immobiliser
- Driver and passenger side airbags with two-stage deployment system
- Airbag, side airbags for driver and front passenger and head/shoulder airbags for all occupants
- Android infotainment system
- Electrically adjustable exterior mirrors
- Outdoor temperature display
- Hill Start Assist (HSA)
- LED turn signals integrated into the exterior mirrors
- third brake light
- Roof rails in high-gloss black (integrated)
- Digital services including Google Maps navigation system
- Aluminum door sill plates with Volvo lettering at the front
- Electronic differential lock
- Electric windows front and rear
- Window surround in high-gloss black
- Luggage compartment partition net
- Front seat belt height adjustment
- Interior and exterior mirrors automatically dimming
- Intelligent driver information system
- Keyless Drive (electronic access system)
- Child safety lock for the rear doors (electric)
- Headrests (5) front and rear
- Headrests of the 2nd row of seats can be folded down (electrically)
- Cargo area roller blind
- Steering wheel adjustable for height and reach
- Steering wheel: Multifunction buttons on the steering wheel
- Illuminated makeup mirror for driver and front passenger
- Emergency brake lights
- Package: Parking Assistance Package
- Package: Winter Package
- Parking ticket holder
- Radio: High Performance Sound audio system
- Radio accessories: Two USB-C ports on the back of the center console
- Run-off Road Protection
- Wheels: Tire sealant
- Rear seats in a 40/60 split or completely foldable with pass-through function
- Speed-sensitive power steering
- Seats: Driver and front passenger seats are height-adjustable (electrically)
- Sport front and rear apron
- Start/Stop technology
- Power socket
- First aid kit and warning triangle
- Lashing eyes in the luggage compartment (foldable)
- Warning tone/indicator when seat belts are not fastened (for all seats)



- Central locking system with two remote controls and integrated emergency keys

### Extra equipment

- Paint finish: Metallic paint
- XC60 winter wheel set 5-Y-Sp. Desg. 235/60 R18 107 H
- Radio: Premium Sound audio system by Harman Kardon (600 watts of power - 14 speakers - Fresh Air - Subwoofer - Dirac Unison - Sound optimization)

## Brief expert findings

Documents submitted	At the time of the inspection, the vehicle registration certificate Part 2 (title) was available, but the vehicle registration certificate Part 1 (document) was not. (Copy)
VIN comparison	The vehicle identification number (VIN) was read from the vehicle and its conformity with the submitted documents was confirmed by the undersigned during the inspection.
Inspection	The inspection conditions were sufficient for the assessment of the vehicle. Lifting equipment and/or a pit were available for examining the vehicle.
Test drive	No test drive/shunting maneuver was carried out during the inspection of the vehicle.
Engine function test	An engine test run was performed.

## Value reducing factors

No.	Component group	Description
1	Body	Body - Glued / labelled - De-glue / neutralise
2	Side panel - rear left side	Sill - Scratch(es) - Smart repair
3	Trim / covers	Door trim - rear right side - Broken / torn - Smart repair
4	Door - rear left side	Door - Dent / paintcoat damage - Repair and paint
5	Bonnet	Bonnet - Dent / paintcoat damage - Repair and paint
6	Front bumper	Front bumper - Scratched - Paint

## Wear and tear

No.	Component group	Description
1	Misc.	Main inspection - No evidence - No deduction
2	Vehicle glazing	Rear window (Ab B-Säule) - Glued / labelled - No deduction
3	Wing mirror - right side	Cap - Abrasion - No deduction

The vehicle shows signs of wear and tear commensurate with its age and use.

## Accident damages

No.	Accident
1	Side right

## Order/Scope of Order

An order was placed to prepare a sales report for the described vehicle. This report includes the following:

- Description of key vehicle information
- Documentation of equipment features  
(*Delivery by third-party service providers*)
- Documentation of damage, defects, missing parts
- Documentation of prior damage, unrepaired prior damage, repainting
- A brief visual or functional inspection of the equipment details, if possible.  
(*Functional testing of driver assistance systems is not included in the scope of services!*)
- a photographic documentation of the vehicle



## Basis for the order

This product is based on the guidelines for vehicle returns and valuations published by Alphabet Fleet GmbH. The expert makes the specific findings in each individual case objectively, within the framework of the prescribed standards, based on their own expertise.

The vehicle inspection takes place in a fully assembled, unassembled state.

Damage or defects that can only be detected during disassembly/diagnostic work or through further investigation remain within the realm of prognostic risk. An increased risk exists due to concealed defects caused by fraudulent misrepresentation and which were not identifiable by the expert.

Damage or defects resulting from normal use or wear and tear of the vehicle will be accepted in accordance with the applicable standard.

There was no explicit identification or monetary consideration of the expected features within the product.

Features which, in their nature and extent, slightly exceed normal use but do not constitute unacceptable damage, will be documented and indicated as signs of wear, if applicable.

Damage or defects that, according to the applicable standard, can no longer be attributed to normal use or wear and tear are listed under "Value Reducing Factors" in the product description.

Depending on the product specification, a monetary ID can be provided. If this takes place, the costs can be 100% d or pro rata depending on the vehicle's age and mileage.

## Previous damages

Non-repaired previous damages were found at the vehicle. The necessary repair costs are listed in the expert report or if necessary, are listed in detail in a separately enclosed repair cost calculation.



Figure 1: Diagonal front (left)



Figure 2: Diagonal front (right)



Figure 3: Diagonal rear (left)



Figure 4: Diagonal rear (right)



Figure 5: Interior - front



Figure 6: Interior - rear



Figure 7: Instrument cluster



Figure 8: Instrument panel



Figure 9: Interior 360° view



Figure 10: Cargo area



Figure 11: VIN



Figure 12: Mounted tyres



Figure 13: Documents

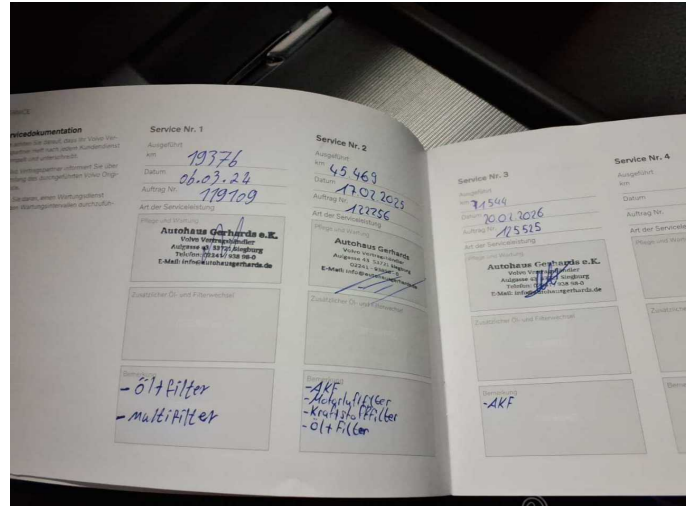


Figure 14: Documents



Figure 15: Additional tyres



Figure 16: Navigation



Figure 17: Misc.

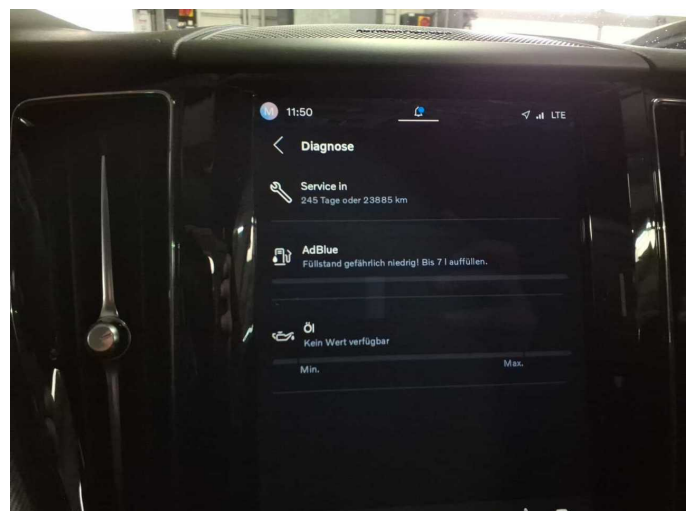


Figure 18: Misc.



Figure 19: Misc.



Figure 20: Misc.



Figure 21: Misc.



Figure 22: Misc.

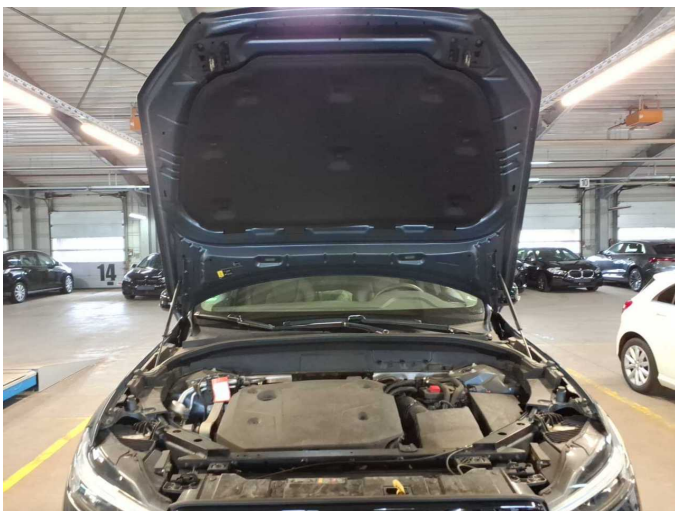


Figure 23: Misc.



Figure 24: Misc.



Figure 25: Misc.



Figure 26: Misc.



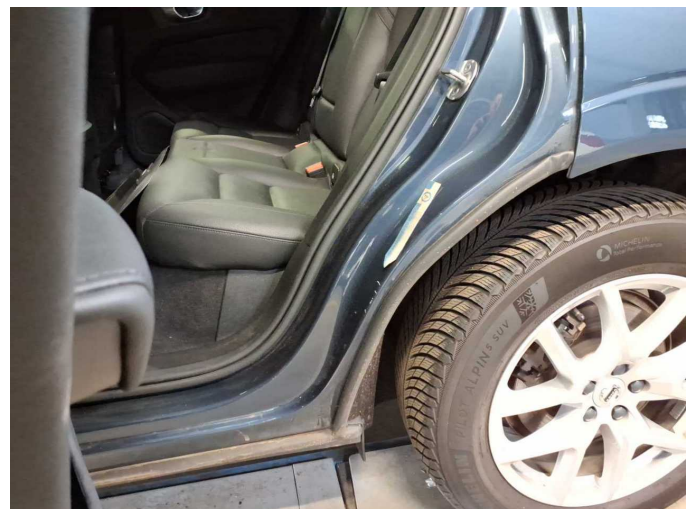
Figure 27: Misc.



Figure 28: Misc.



Damage 1: Body: Body - Glued / labelled - De-glude / neutralise



Damage 2: Side panel - rear left side: Sill - Scratch(es) - Smart repair



**Damage 2:** Side panel - rear left side: Sill - Scratch(es) - Smart repair



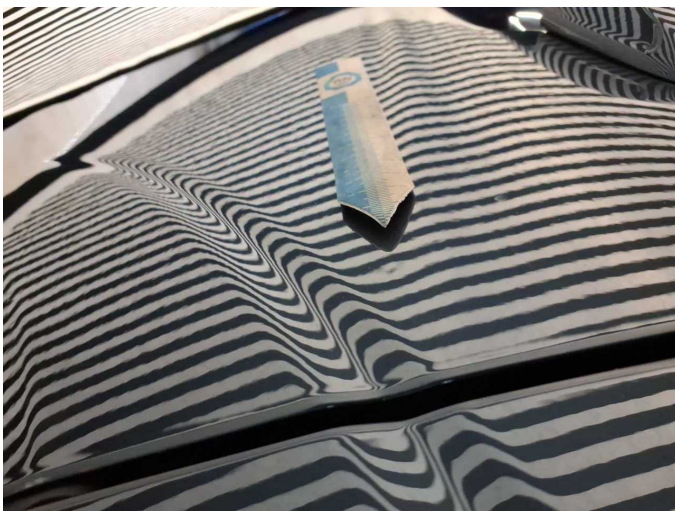
**Damage 3:** Trim / covers: Door trim - rear right side - Broken / torn - Smart repair



**Damage 3:** Trim / covers: Door trim - rear right side - Broken / torn - Smart repair



**Damage 4:** Door - rear left side: Door - Dent / paintcoat damage - Repair and paint



**Damage 4:** Door - rear left side: Door - Dent / paintcoat damage - Repair and paint



**Damage 4:** Door - rear left side: Door - Dent / paintcoat damage - Repair and paint



**Damage 4:** Door - rear left side: Door - Dent / paintcoat damage - Repair and paint



**Damage 5:** Bonnet: Bonnet - Dent / paintcoat damage - Repair and paint



**Damage 5:** Bonnet: Bonnet - Dent / paintcoat damage - Repair and paint



**Damage 5:** Bonnet: Bonnet - Dent / paintcoat damage - Repair and paint



**Damage 5:** Bonnet: Bonnet - Dent / paintcoat damage - Repair and paint



**Damage 5:** Bonnet: Bonnet - Dent / paintcoat damage - Repair and paint



**Damage 6:** Front bumper: Front bumper - Scratched - Paint



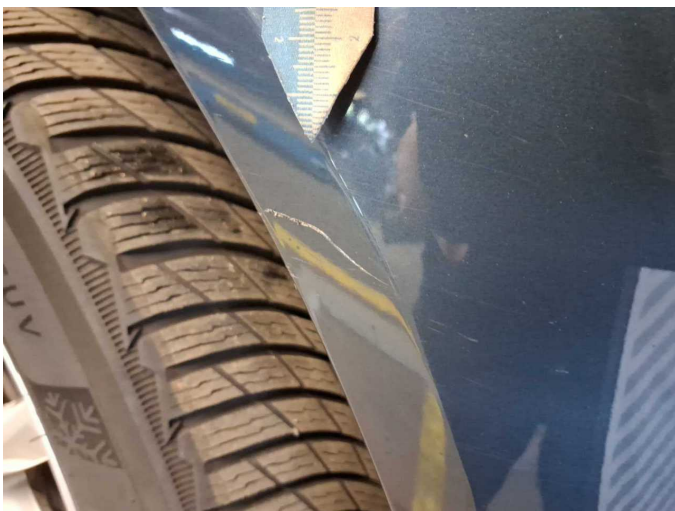
**Damage 6:** Front bumper: Front bumper - Scratched - Paint



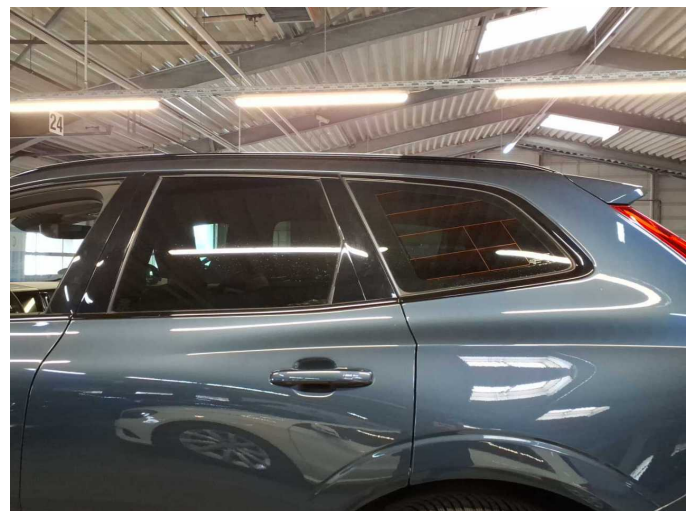
**Damage 6:** Front bumper: Front bumper - Scratched - Paint



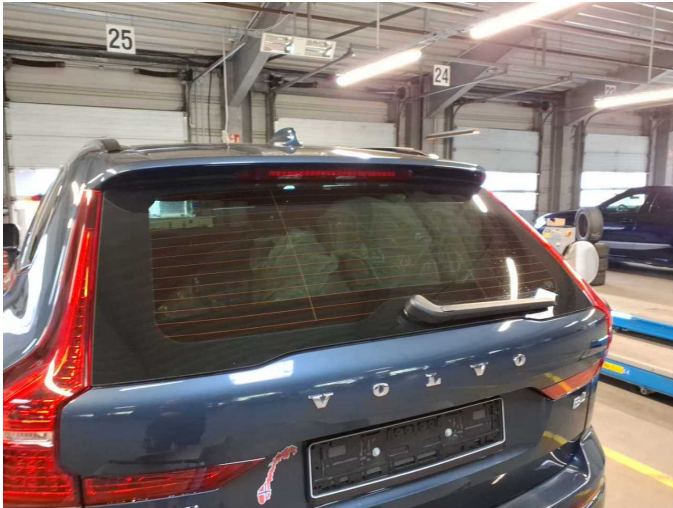
**Damage 6:** Front bumper: Front bumper - Scratched - Paint



**Damage 6:** Front bumper: Front bumper - Scratched - Paint



**Wear and tear 2:** Vehicle glazing: Rear window (Ab B-Säule) - Glued / labelled - No deduction



**Wear and tear 2:** Vehicle glazing: Rear window (Ab B-Säule) - Glued / labelled - No deduction



**Wear and tear 2:** Vehicle glazing: Rear window (Ab B-Säule) - Glued / labelled - No deduction



**Wear and tear 2:** Vehicle glazing: Rear window (Ab B-Säule) - Glued / labelled - No deduction



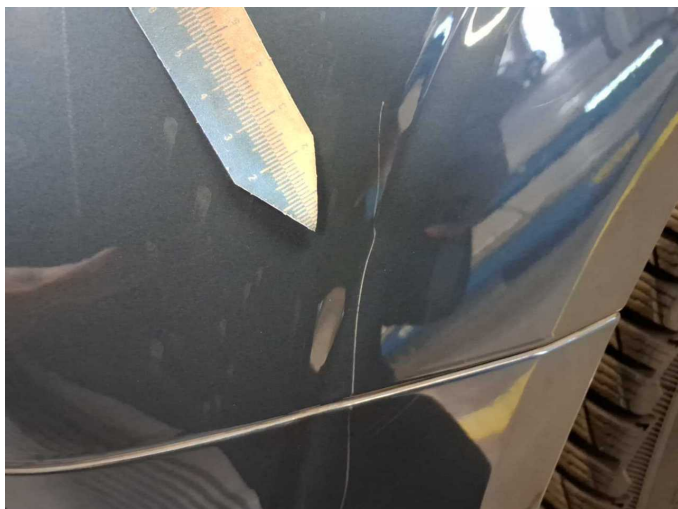
**Wear and tear 3:** Wing mirror - right side: Cap - Abrasion - No deduction



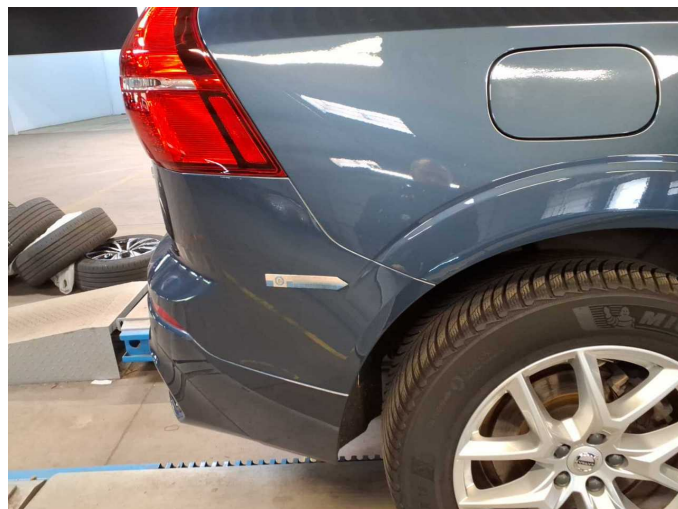
**Wear and tear 3:** Wing mirror - right side: Cap - Abrasion - No deduction



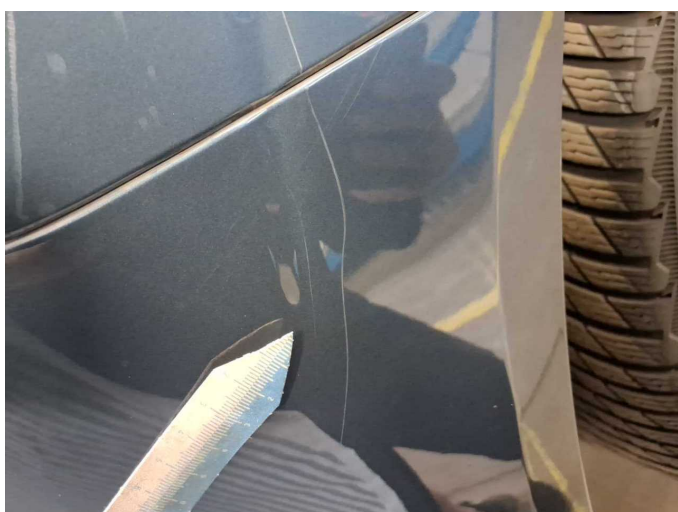
**Accident 1:** Side right



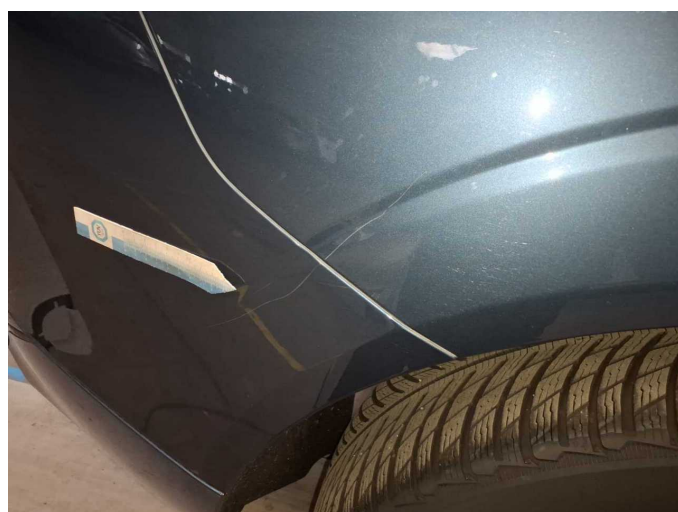
Accident 1: Side right



Accident 1: Side right



Accident 1: Side right



Accident 1: Side right



# Wartungshistorie

(gemäß Auftraggeber Informationen)

Fahrgestellnummer: YV1UZK5V6P1323815  
Hersteller / Modell: VOLVO VOLVO XC60 B4 D Plus Dark

Datum	KM-Stand	Beschreibung
20.05.2026	77.570	AU
20.02.2026	71.544	Motoröl b. Wartung; Ölfilter ern; Regelwartungsdienst; Wartung Sonstiges
17.02.2025	45.474	Kraftstofffilter ern; Luftfiltereinsatz ern; Motoröl b. Wartung; Ölfilter ern; Regelwartungsdienst; Reparatur Sonstiges; Wartung Sonstiges
07.03.2024	19.376	Motoröl b. Wartung; Ölfilter ern; Regelwartungsdienst; Wartung Sonstiges