

Expertise

Protocol number: 46203774
Order No. / Reference: 26630674
Inspection date: 26 Jun 2026

Manufacturer: Audi

Model: Q4 e-tron 45 quattro

VIN: WAUZZZFZXP022156



Vehicle details

Manufacturer / Type / Model / Equipment

Audi Q4 e-tron 45 quattro

Vehicle Identification number WAUZZZFZXP022156

Mileage (Read) 98,837 km

First registration 24 Jan 2023

Number of holders 1

Next periodical technical inspection 05/2028
(Report on hand)

Power / Engine displacement 77 kw /

Fuel type / Cylinder Electric / 0

Gearbox / Number of gears Direct drive / 1

Type of drive All-wheel drive

Type of vehicle SUV

Colour / colour code Gletscherweiss Metallic
(S9R)

Doors / Seats 5 / 5

Upholstery type Cloth

Colour of upholstery Black-Anthracite

Vehicle with smoke odor no



Vehicle details

Maintenance booklet / proof	digital proof / complete	Next maintenance in	7 Monat(e)
Last service on / at	01/2025 at 56,267 km		
Key is / should be	2 / 2	FZG documents	ZB#2 (B) was available (copy), ZB#1 (S) was not available.
		Letter No.	GP954592
Previous damage / Accident	None detectable	Repainting	None detectable
Inspection conditions	sufficient	Lifting equipment / pit	yes
Test drive	short drive on the company premises	Engine function test	Performed
Manufacturer key number/ type code number	0588 / BZW 00021		
Emission standard	2017/1151;WLTP;reine Elektrofz	fine dust sticker	
Permitted total weight	2,720 kg	Empty weight	

Tyres

Mounted tyres

#	Tyre size	Type of tyre	Manufacturer	Tread depth
1)	235/55 R19 101T	Summer tyres on Light alloy	Pirelli	6mm / 6mm
2)	255/50 R19 103T	Summer tyres on Light alloy	Pirelli	6mm / 6mm

Additional tyres

#	Tyre size	Type of tyre	Manufacturer	Tread depth
1)	235/55 R19 101T	Winter tires (with run-flat tires) on Steel rim with wheel cover	Pirelli	5mm / 5mm
2)	255/50 R19 103T	Winter tires (with run-flat tires) on Steel rim with wheel cover	Pirelli	5mm / 5mm

Replacement

Typ	Tyre size	Type of tyre	Manufacturer	Tread depth
Tirefit		Expiration date 01/2028		

Legend: Tread depth information for the left tire is listed first, for the right tire it is listed second on the axle in the direction of travel.



Equipment

Standard equipment

- Airbag for driver and front passenger
- Acoustic vehicle warning system
- Anti-lock braking system (ABS)
- Audi connect Remote & Control for MMI plus and pro
- Evasive steering assist and turning assist
- Vehicle tool kit
- Fabric headliner
- Decorative inlay, black tactile lacquer
- Rear parking sensors
- Chassis: Comfort chassis
- Transmission: 1-speed direct drive
- Interior lighting
- i-Size child seat anchors on the front passenger side, i-Size and Top Tether anchors on the outer rear seats
- Headrests (5)
- Mode 3 charging cable for public charging
- LED headlights
- Light and rain sensor
- Model name and performance/technology lettering
- Package: Gloss Package
- Progressive steering
- Wheel: Steel wheels 8.0 J x 19"
- Power steering
- Seats: Rear seat backrest foldable
- Speed limiter without cruise control and without adaptive cruise control.
- 12-volt socket
- Camera-based traffic sign recognition
- Green thermal insulation glazing
- Airbag: Front side airbags, with head airbag and front interaction airbag
- Audi connect emergency call and service
- Audi pre sense front
- Electrically adjustable/heated exterior mirrors
- third brake light
- Aluminum roof rails
- Tachometer
- Electronic Stability Control (ESC)
- front and rear floor mats
- rear window wiper
- Interior mirror dimming
- Automatic air conditioning
- Comfort center armrest in front
- Combo 2 charging socket (EU)
- LED taillights
- Steering wheel: Double-spoke leather steering wheel with multifunction
- On-board charger up to 11 kW (AC)
- Upholstery: Fabric Index
- Wheel: Tire pressure monitoring system
- Radio: MMI Radio
- Seats: Standard front seats
- Seats: Front seats manually adjustable
- Lane Departure Warning
- Stationary air conditioning
- First aid kit with warning triangle
- Electronic immobilizer
- Central locking



Extra equipment

- Trailer hitch pre-installation (Includes pre-wiring up to the spare wheel well. The parts kit for retrofitting the trailer hitch is available via Audi Genuine Accessories.)
- Deletion of performance/technology lettering
- Chassis: Sport chassis (The sport chassis, with a 15 mm lower ride height compared to the standard chassis and more dynamic spring and damper tuning, uses a McPherson strut axle with lower wishbones, shock absorbers, coil springs, subframe and stabilizer bar at the front. At the rear, a 4-link axle with separate spring and damper arrangement, shock absorbers, coil springs, subframe and stabilizer bar is used.)
- Comfort key without Safelock (The vehicle can be unlocked at all doors and the tailgate via wireless communication. The comfort key simply needs to be carried and does not need to be actively used. The vehicle can be locked again using the sensors on the door handles. The engine is started and stopped using the engine start/stop button.)
- Paint finish: Metallic
- Steering wheel: Double-spoke leather steering wheel with multifunction and shift paddles in conjunction with steering wheel heating or advanced driver assistance systems. (For convenient operation of the extensive standard and optional infotainment features, the steering wheel is equipped with multifunction buttons with touch control. Height and reach of the steering wheel are manually adjustable.)
- Navigation: MMI Navigation pro (11.6-inch MMI Navigation plus with MMI touch including Audi connect Navigation & Infotainment plus - camera-based traffic sign recognition - 10.25-inch Audi virtual cockpit plus with three display options "Classic", "Sport" and "e-tron" - Audi connect Navigation & Infotainment plus - voice control - smartphone interface connects the smartphone to the vehicle's operating system - augmented reality head-up display)
- Package: Dynamic package (Audi drive select - progressive steering)
- Package: Comfort package (electrically adjustable, heated and folding exterior mirrors, automatically dimming on both sides, with integrated LED turn signals and curb view function for the passenger-side exterior mirror, aspherical mirror glass on the left, convex on the right, including heated windshield washer nozzles - automatically dimming, frameless interior mirror - 4-way lumbar support for the front seats - projection lights in the exterior mirrors)
- Wheel: Tire repair kit
- Reversing camera (image display of the area behind the vehicle on the MMI display)
- Audi connect Navigation & Infotainment plus (e-tron route planner - Online points of interest - On-street parking - Online traffic information - Hazard information - Online traffic sign information - Weather information - Wi-Fi hotspot - Online news - User profiles - Navigation with Google Satellite Map - Online search for navigation destinations - Online voice input - Online traffic information plus - Highly detailed 3D city display - Online radio - Hybrid radio - Amazon Alexa integration)
- Electrically opening and closing tailgate with sensor-controlled tailgate release (The tailgate opens electrically after unlocking and can be closed again at the touch of a button. Closing the tailgate is just as easy and convenient as opening it, using the button on the inside of the tailgate, the vehicle key button, or the button in the driver's door. The soft-close function makes manual closing easier when necessary. The opening angle of the tailgate can be limited in areas with low ceilings.)
- LED headlights: Matrix LED headlights (The Matrix LED headlights with digital light signatures, dynamic light styling and dynamic turn signals. Front and rear LED headlights with the following functionalities: - digital daytime running light signature (4 light signatures selectable when stationary) - low beam - high beam - position light - dynamic turn signal - cornering light - all-weather light - maneuvering light - motorway light - automatic dynamic headlight range control. LED taillights)
- Package: Advanced Assistance Package (Adaptive Cruise Control with predictive control (the set speed of the adaptive cruise control is additionally adjusted to detected speed limits and the road ahead) - Parking Aid Plus, supports the driver when parking and maneuvering forwards and backwards with acoustic signals and visual display - Adaptive Driving Assistant supports acceleration, braking, maintaining speed and distance, and lane keeping)
- Package: Climate Control Package (The 3-zone automatic climate control electronically regulates the air temperature, volume, and distribution. An additional function is the sun-position-dependent control. The temperature settings for the driver and front passenger sides can be adjusted separately. Separate temperature control and air vents are available in the rear. The 3-zone automatic climate control features automatic recirculation in combination with a dust- and odor-removing cabin air filter. The comfort stationary climate control cools or heats the interior.)
- Smartphone interface with USB port on the back



Brief expert findings

Documents submitted	At the time of the inspection, the vehicle registration certificate Part 2 (title) was available, but the vehicle registration certificate Part 1 (document) was not. (Copy)
VIN comparison	The vehicle identification number (VIN) was read from the vehicle and its conformity with the submitted documents was confirmed by the undersigned during the inspection.
Inspection	The inspection conditions were sufficient for the assessment of the vehicle. Lifting equipment and/or a pit were available for examining the vehicle.
Test drive	A short maneuvering and shunting exercise was carried out on the company premises.
Engine function test	An engine test run was performed.

Value reducing factors

No.	Component group	Description
1	Wing mirror - left side	Cap - Scratch(es) - Smart repair
2	Door - front left side	Door edge - Scratch(es) - Smart repair
3	Indicator - front	Mirror - left side - Broken / torn - Replace
4	Indicator - front	Mirror - right side - Broken / torn - Replace
5	Mudguard - right side	Mudguard - right side - Scratch(es) - Smart repair
6	Front bumper	Front bumper (+ Steinschlag Gebrauchspur) - Scratch(es) - Smart repair
7	Tail light	Tail light (Mitte) - Scratch(es) - Loss in value
8	Rear bumper	Rear bumper - Scratch(es) - Paint

Wear and tear

No.	Component group	Description
1	Bonnet	Bonnet - Stone chips - No deduction
2	Vehicle glazing	Windscreen - Stone chips - No deduction
3	2nd wheel set	1 wheel cover - Scratch(es) - No deduction
4	2nd wheel set	1 wheel cover - Scratch(es) - No deduction
5	Wheel / tyres	Tyres - complete set (Sommereifen auf Zubehörfelger) - No deduction
6	Wheel / tyres	Alloy rim - front left side - Scratched - No deduction
7	Wheel / tyres	Alloy rim - front right side - Scratched - No deduction

The vehicle shows signs of wear and tear commensurate with its age and use.

Order/Scope of Order

An order was placed to prepare a sales report for the described vehicle. This report includes the following:

- Description of key vehicle information
- Documentation of equipment features
(*Delivery by third-party service providers*)
- Documentation of damage, defects, missing parts
- Documentation of prior damage, unrepaired prior damage, repainting
- A brief visual or functional inspection of the equipment details, if possible.
(*Functional testing of driver assistance systems is not included in the scope of services!*)
- a photographic documentation of the vehicle



Basis for the order

This product is based on the guidelines for vehicle returns and valuations published by Alphabet Fleet GmbH. The expert makes the specific findings in each individual case objectively, within the framework of the prescribed standards, based on their own expertise.

The vehicle inspection takes place in a fully assembled, unassembled state.

Damage or defects that can only be detected during disassembly/diagnostic work or through further investigation remain within the realm of prognostic risk. An increased risk exists due to concealed defects caused by fraudulent misrepresentation and which were not identifiable by the expert.

Damage or defects resulting from normal use or wear and tear of the vehicle will be accepted in accordance with the applicable standard.

There was no explicit identification or monetary consideration of the expected features within the product.

Features which, in their nature and extent, slightly exceed normal use but do not constitute unacceptable damage, will be documented and indicated as signs of wear, if applicable.

Damage or defects that, according to the applicable standard, can no longer be attributed to normal use or wear and tear are listed under "Value Reducing Factors" in the product description.

Depending on the product specification, a monetary ID can be provided. If this takes place, the costs can be 100% d or pro rata depending on the vehicle's age and mileage.

Previous damages

No apparent prior damage that had been repaired could be found on the vehicle.

Comments

- Winterradsatz ist kein Bestandteil des Auslieferungsumfangs.



Figure 1: Diagonal front (left)



Figure 2: Diagonal front (right)



Figure 3: Diagonal rear (left)



Figure 4: Diagonal rear (right)



Figure 5: Interior - front



Figure 6: Interior - rear



Figure 7: Instrument cluster



Figure 8: Instrument panel



Figure 9: Interior 360° view



Figure 10: Cargo area

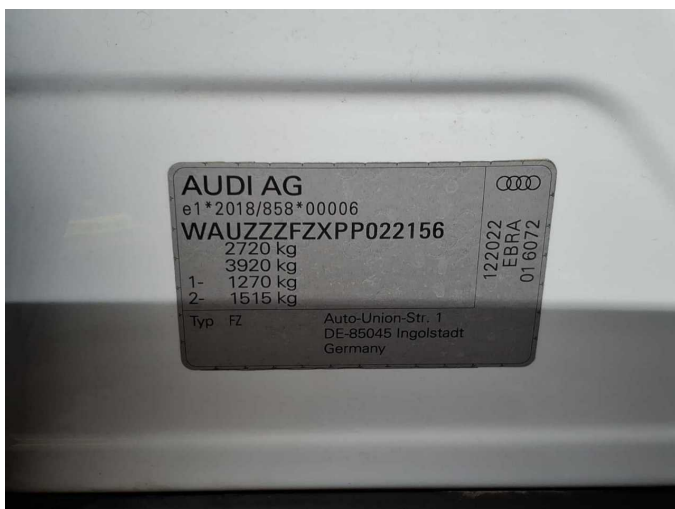


Figure 11: VIN



Figure 12: Mounted tyres



Figure 13: Documents

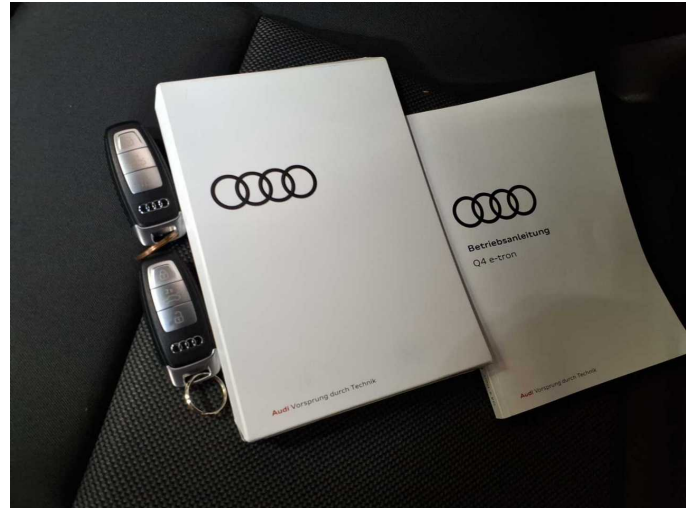


Figure 14: Documents



Figure 15: Documents



Figure 16: Additional tyres



Figure 17: Navigation



Figure 18: Misc.



Figure 19: Misc.



Figure 20: Misc.



Figure 21: Misc.



Figure 22: Misc.



Figure 23: Misc.

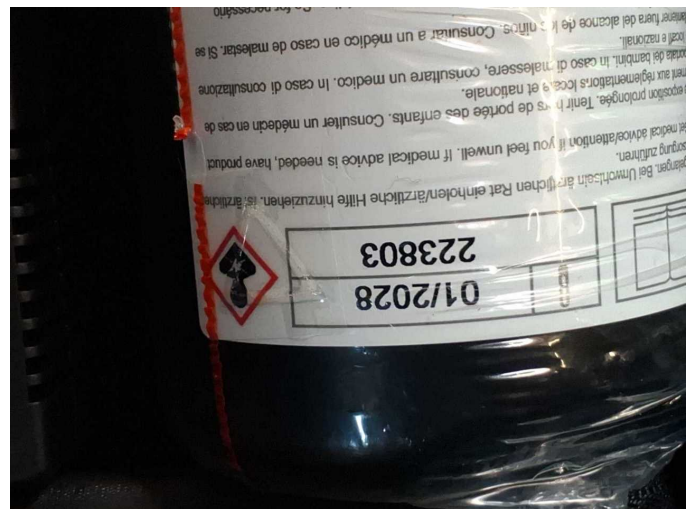


Figure 24: Misc.



Figure 25: Misc.



Figure 26: Misc.



Figure 27: Misc.

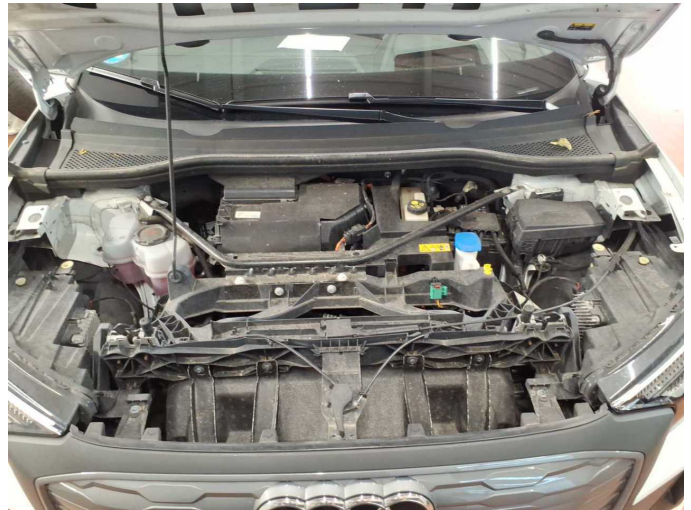


Figure 28: Misc.



Figure 29: Misc.



Figure 30: Misc.



Figure 31: Misc.



Figure 32: Misc.

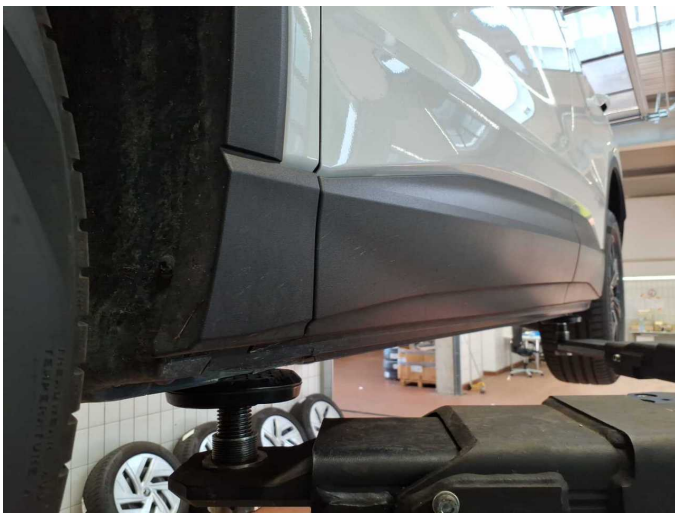


Figure 33: Misc.



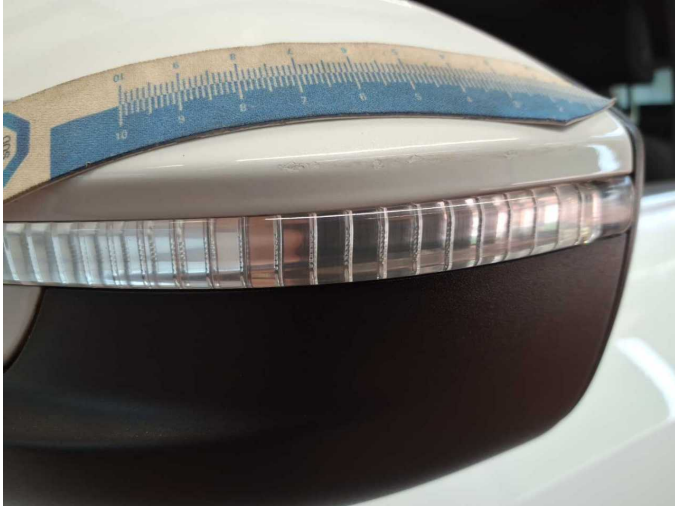
Figure 34: Misc.



Figure 35: Misc.



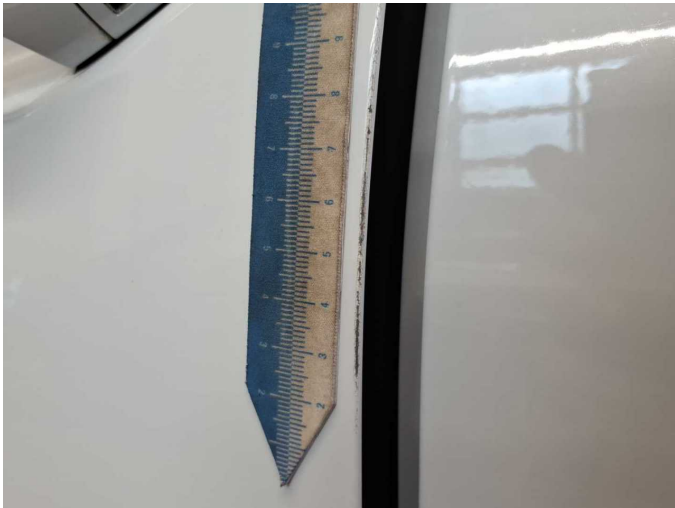
Damage 1: Wing mirror - left side: Cap - Scratch(es) - Smart repair



Damage 1: Wing mirror - left side: Cap - Scratch(es) - Smart repair



Damage 2: Door - front left side: Door edge - Scratch(es) - Smart repair



Damage 2: Door - front left side: Door edge - Scratch(es) - Smart repair



Damage 3: Indicator - front: Mirror - left side - Broken / torn - Replace



Damage 3: Indicator - front: Mirror - left side - Broken / torn - Replace



Damage 4: Indicator - front: Mirror - right side - Broken / torn - Replace



Damage 4: Indicator - front: Mirror - right side - Broken / torn - Replace



Damage 5: Mudguard - right side: Mudguard - right side - Scratch(es) - Smart repair



Damage 5: Mudguard - right side: Mudguard - right side - Scratch(es) - Smart repair



Damage 6: Front bumper: Front bumper (+ Steinschlag Gebrauchspur) - Scratch(es) - Smart repair



Damage 6: Front bumper: Front bumper (+ Steinschlag Gebrauchspur) - Scratch(es) - Smart repair



Damage 7: Tail light: Tail light (Mitte) - Scratch(es) - Loss in value



Damage 7: Tail light: Tail light (Mitte) - Scratch(es) - Loss in value



Damage 8: Rear bumper: Rear bumper - Scratch(es) - Paint



Damage 8: Rear bumper: Rear bumper - Scratch(es) - Paint



Damage 8: Rear bumper: Rear bumper - Scratch(es) - Paint



Damage 8: Rear bumper: Rear bumper - Scratch(es) - Paint



Damage 8: Rear bumper: Rear bumper - Scratch(es) - Paint



Damage 8: Rear bumper: Rear bumper - Scratch(es) - Paint



Wear and tear 3: 2nd wheel set: 1 wheel cover - Scratch(es) - No deduction



Wear and tear 3: 2nd wheel set: 1 wheel cover - Scratch(es) - No deduction



Wear and tear 5: Wheel / tyres: Tyres - complete set (Sommereifen auf Zubehörfelger) - No deduction



Wartungshistorie

(gemäß Auftraggeber Informationen)

Fahrgestellnummer: WAUZZZFZXPP022156
Hersteller / Modell: AUDI AUDI Q4 e-tron 45 quattro

Datum	KM-Stand	Beschreibung
28.01.2025	56.267	Bremsflüssigkeit; Bremsflüssigkeit ern; Regelwartungsdienst