

Expertise

Protocol number: 46051904
Order No. / Reference: 26601129
Inspection date: 19 Jun 2026

Manufacturer: Peugeot

Model: 5008 BlueHDi 180 EAT8 GT Pack

VIN: VF3MJEHZUNS173425



Vehicle details

Manufacturer / Type / Model / Equipment

Peugeot 5008 BlueHDi 180 EAT8 GT Pack

Vehicle Identification number VF3MJEHZUNS173425

Mileage (Read) 192,553 km

First registration 18 Apr 2023

Number of holders 1

Next periodical technical inspection 05/2028

(Report on hand)

Power / Engine displacement 130 kw / 1,997 ccm

Fuel type / Cylinder Diesel / 4

Gearbox / Number of gears Automatic / 8

Type of drive Front drive

Type of vehicle SUV

Colour / colour code Perla Nera Schwarz
Metallic

Doors / Seats 5 / 7

Upholstery type Alcantara / Leather

Colour of upholstery Black-Anthracite

Vehicle with smoke odor no



Vehicle details

Maintenance booklet / proof	digital proof / complete	Next maintenance in	6 Monat(e)
Last service on / at	11/2025 at 181,159 km		
Key is / should be	2 / 2	FZG documents	ZB#2 (B) was available (copy), ZB#1 (S) was not available.
		Letter No.	GG053252
Previous damage / Accident	Detectable	Repainting	Detectable
Inspection conditions	sufficient	Lifting equipment / pit	yes
Test drive	short drive on the company premises	Engine function test	Performed
Manufacturer key number/ type code number	3003 / AZF 00092		
Emission standard	EURO6;WLTP;AP;PI/CI; M, N1 I	fine dust sticker	
Permitted total weight	2,280 kg	Empty weight	

Tyres

Mounted tyres

#	Tyre size	Type of tyre	Manufacturer	Tread depth
1)	205/55 R19 97V	Summer tyres on Light alloy	Falken	6mm / 6mm
2)	205/55 R19 97V	Summer tyres on Light alloy	Falken	6mm / 6mm

Additional tyres

#	Tyre size	Type of tyre	Manufacturer	Tread depth
1)	225/55 R18 102V	Winter tyres on Light alloy	Hankook	3mm / 3mm
2)	225/55 R18 102V	Winter tyres on Light alloy	Hankook	6mm / 6mm

Replacement

Typ	Tyre size	Type of tyre	Manufacturer	Tread depth
	Tirefit	Expiration date 10/2027		

Legend: Tread depth information for the left tire is listed first, for the right tire it is listed second on the axle in the direction of travel.

TÜV SÜD Auto Partner GmbH
Wiesenring 2
04159 Leipzig

Inspection location
ARS Altmann AG Niederlassung
Wolnzach
Feierabendmühle 2
85283 Wolnzach



Equipment



Standard equipment

- ABS (Anti-lock Braking System)
- Airbag: Front and rear side airbags
- Active Blind Spot Assist
- Electrically folding exterior mirrors with LED approach lighting
- Exterior mirrors in Perla Nera Black
- Hill start assist
- Chrome trim strips on the lower part of the doors
- Chrome trim strips below the side windows
- Black headliner
- Ceiling light - LED at the front, in row 2 and in row 3, 2 LED reading lights at the front, in row 2 and in row 3
- Decorative trim on the dashboard and door panels in satin chrome
- EBV (Electronic Brakeforce Distribution)
- Front parking aid, acoustic and visual
- Driving mode selector (Sport - Normal - Eco)
- Misfueling protection
- High beam assist
- Follow-me-home function (automatic)
- Front bumper in chrome look
- Floor mats
- Transmission: 8-speed automatic transmission EAT8
- Seat belts: 3-point safety belts
- Heated rear window
- Interior mirror automatically dimming
- Keyless system
- Automatic climate control (2-zone), with activated carbon filter
- Paint finish: Copper Brown
- White LED ambient lighting in the front footwell
- LED taillights with 3D effect
- Steering wheel: Multifunction leather steering wheel
- Steering wheel: small multifunction steering wheel, flattened at the top and bottom
- Front center armrest, two-piece, with storage compartment, illuminated and climate-controlled
- Fog light
- Package: Easy Package
- Particulate filter: FAP diesel particulate filter
- Peugeot Connect Box
- Radio: RCC audio system
- Radio: FOCAL sound system
- Radio accessories: Digital radio reception DAB+
- Tire pressure monitoring system
- Wheels: Tire repair kit (compressor + tire sealant spray)
- Keyless start system
- Electric power steering
- Seats: 2 additional seats for the 3rd row
- Seats: Passenger seat height adjustable
- Seats: Driver's seat height adjustable
- Lane keeping assist with steering intervention
- Airbag for driver and front passenger
- Airbag: Curtain airbags front and rear
- Adaptive Cruise Control (ACC) with Stop & Go function including lane positioning assistant
- Electrically adjustable and heated exterior mirrors with integrated LED turn signals
- On-board computer
- Chrome trim strips above the side windows
- Black Diamond roof (roof in Perla Nera black)
- Aluminum roof rails
- Alcantara "Greval" decorative inserts for door panels and dashboard
- Digital instrument cluster with high-resolution 12.3" screen, adjustable and customizable
- Rear parking aid, acoustic and visual
- ESP (Electronic Stability Program) with ASR (Anti-Slip Regulation)
- Electric windows front and rear
- electric parking brake
- Front collision warning
- Full LED headlights with automatic headlight range control
- Cruise control system with speed limiter
- Cup holder in the center console
- tailgate sensor-controlled
- rear window wiper
- Frameless interior mirror
- Child safety locks on the rear doors
- Front headrests (2)
- Rear headrests (3)
- Chrome-plated loading sill protector
- Blue LED lighting on the door panel
- LED daytime running lights and LED turn signals at the front
- light sensor
- makeup mirror
- Fatigue warning
- Navigation system: 3D navigation system NAC
- Emergency brake assist
- Package: Kids' Package (Allure Pack, GT, GT Pack)
- Aluminum pedals and stainless steel door sills
- Upholstery: Faux leather / Alcantara black with red decorative stitching
- Radio: Mirror Screen
- Rain sensor
- Wheels: 19" "San Francisco" alloy wheels, two-tone
- paddle shifters on the steering wheel
- Side windows in the second row and rear window are more heavily tinted.
- Seats: 3 separate individual seats in row 2
- Seats: Passenger seat foldable
- Seats: Heated front seats
- Socket (3) 12 Volt



- Power outlet: Dual USB port (Type A) in row 2
- Traffic sign recognition
- Immobiliser

- Stop&Start system
- Tie-down points in the trunk (4 pieces)
- Central locking system, activatable from inside via remote control

Extra equipment

- Paint finish: Special metallic paint
- Package: Black Tone (5008 and GT logo and "PEUGEOT" lettering in satin black - roof rails in satin black - front bumper in gloss black - radiator grille in dark chrome - loading sill protector in Perla Nera black - 19" two-tone Washington alloy wheels in black - lion emblem front and rear in dark chrome - trim inserts on the front fenders in gloss black - trim strips on the lower part of the doors in black - side window trim in black - spare wheel well (not for Blue HDi 180 EAT8))
- Night Vision (night vision system with display of the road situation at night in the instrument cluster)
- Seats: Ergonomic comfort seats with AGR seal of approval (electrically adjustable driver's seat with memory function - heated front seats - massage function for driver and front passenger seats - extendable thigh support on driver and front passenger sides - electric lumbar support on driver and front passenger sides - electric seat tilt adjustment on the front passenger side - exterior mirrors with projection of the PEUGEOT lion onto the ground)

Brief expert findings

Documents submitted	At the time of the inspection, the vehicle registration certificate Part 2 (title) was available, but the vehicle registration certificate Part 1 (document) was not. (Copy)
VIN comparison	The vehicle identification number (VIN) was read from the vehicle and its conformity with the submitted documents was confirmed by the undersigned during the inspection.
Inspection	The inspection conditions were sufficient for the assessment of the vehicle. Lifting equipment and/or a pit were available for examining the vehicle.
Test drive	A short maneuvering and shunting exercise was carried out on the company premises.
Engine function test	An engine test run was performed.

Value reducing factors

No.	Component group	Description
1	Seat - front	Seat cover - left side - Broken / torn - Loss in value
2	Roof	Roof - Stone chips - Paint
3	Vehicle glazing	Windscreen - Stone chips - Replace

Wear and tear

No.	Component group	Description
1	Side panel - rear left side	Sill - dent(s) - No deduction
2	Side panel - rear right side	Sill - dent(s) - No deduction
3	Sill - right side	Sill - Scratch(es) - No deduction
4	Front bumper	Front bumper - Stone chips - No deduction
5	Boot lid / rear door	Boot lid - Scratch(es) - No deduction
6	Door - front left side	Door - Scratch(es) - No deduction
7	Headlight	Headlight - right side - Stone chips - No deduction

The vehicle shows signs of wear and tear commensurate with its age and use.

Previous damages

No.	Previous damage	Extent of damage (Net)
1	Front, Side - left, Provided by user / customer, from 27 Jun 2025	7.740,29 €
2	Side - left, Provided by user / customer, from 24 Mar 2025	9.788,29 €



Repainting

No. Repainting

- 1 Bonnet, Professionally carried out, Invoice of repair done Non-existent
- 2 Side panel - rear left side, Professionally carried out, Invoice of repair done Non-existent

Paint coat thickness measurement

Bonnet	283 µm	Side panel - rear left side	275 µm
--------	--------	-----------------------------	--------

Order/Scope of Order

An order was placed to prepare a sales report for the described vehicle. This report includes the following:

- Description of key vehicle information
- Documentation of equipment features
(*Delivery by third-party service providers*)
- Documentation of damage, defects, missing parts
- Documentation of prior damage, unrepaired prior damage, repainting
- A brief visual or functional inspection of the equipment details, if possible.
(*Functional testing of driver assistance systems is not included in the scope of services!*)
- a photographic documentation of the vehicle

Basis for the order

This product is based on the guidelines for vehicle returns and valuations published by Alphabet Fleet GmbH. The expert makes the specific findings in each individual case objectively, within the framework of the prescribed standards, based on their own expertise.

The vehicle inspection takes place in a fully assembled, unassembled state.

Damage or defects that can only be detected during disassembly/diagnostic work or through further investigation remain within the realm of prognostic risk. An increased risk exists due to concealed defects caused by fraudulent misrepresentation and which were not identifiable by the expert.

Damage or defects resulting from normal use or wear and tear of the vehicle will be accepted in accordance with the applicable standard.

There was no explicit identification or monetary consideration of the expected features within the product.

Features which, in their nature and extent, slightly exceed normal use but do not constitute unacceptable damage, will be documented and indicated as signs of wear, if applicable.

Damage or defects that, according to the applicable standard, can no longer be attributed to normal use or wear and tear are listed under "Value Reducing Factors" in the product description.

Depending on the product specification, a monetary ID can be provided. If this takes place, the costs can be 100% d or pro rata depending on the vehicle's age and mileage.

Previous damages

According to available information previous damages were repaired at the vehicle. Traces of repairs, which allow conclusions about the area of repair, were not recognizable during the inspection.

Comments

Der beiliegende Winterradsatz ist kein Bestandteil der Auslieferungsumfangs.



Figure 1: Diagonal front (left)



Figure 2: Diagonal front (right)



Figure 3: Diagonal rear (left)



Figure 4: Diagonal rear (right)



Figure 5: Interior - front

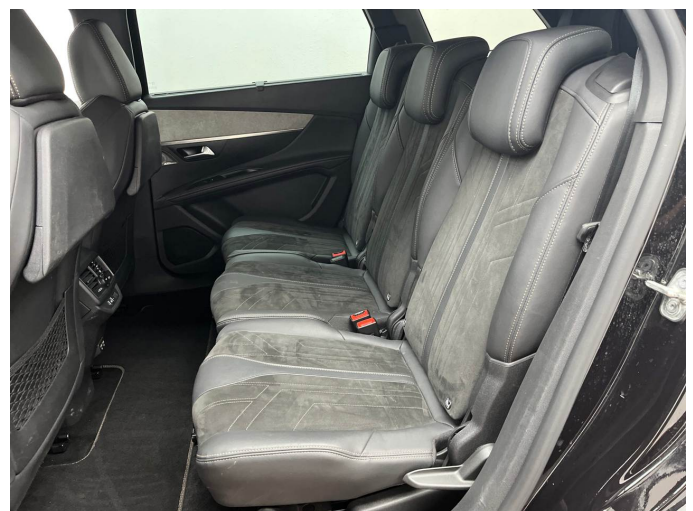


Figure 6: Interior - rear



Figure 7: Instrument cluster



Figure 8: Instrument panel



Figure 9: Interior 360° view



Figure 10: Cargo area



Figure 11: VIN



Figure 12: Mounted tyres



Figure 13: Documents



Figure 14: Documents



Figure 15: Documents



Figure 16: Additional tyres

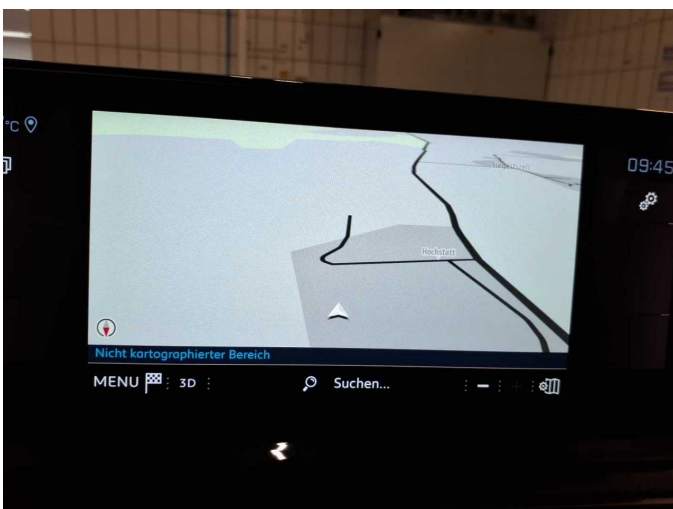


Figure 17: Navigation



Figure 18: Misc.



Figure 19: Misc.



Figure 20: Misc.



Figure 21: Misc.



Figure 22: Misc.



Figure 23: Misc.



Figure 24: Misc.



Figure 25: Misc.



Figure 26: Misc.



Figure 27: Misc.

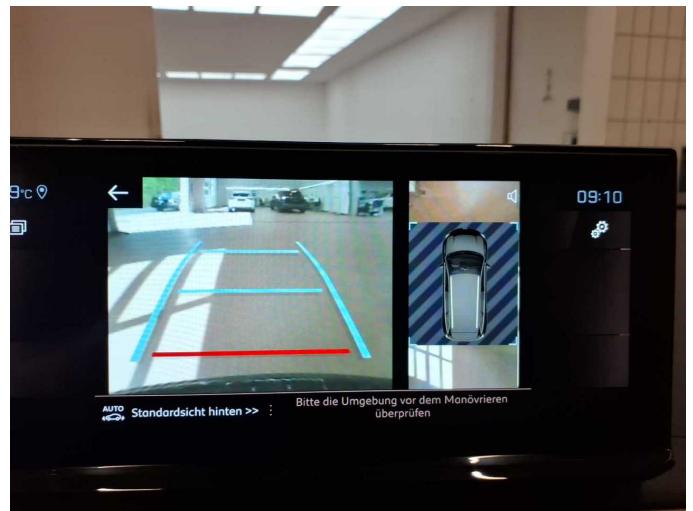


Figure 28: Misc.



Figure 29: Misc.



Figure 30: Misc.



Figure 31: Misc.



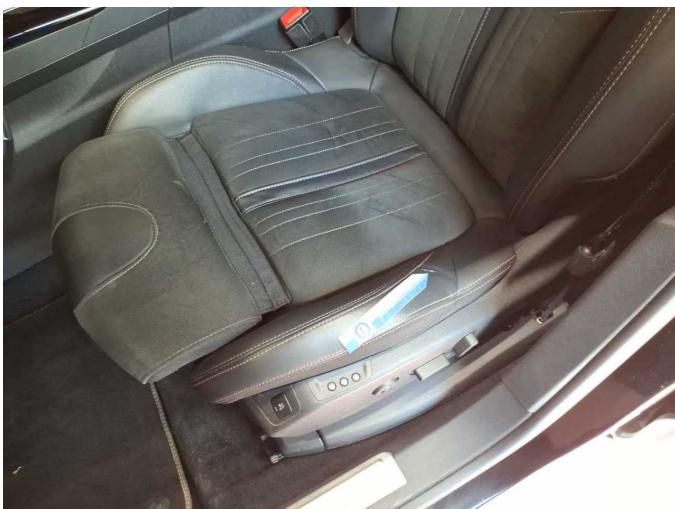
Figure 32: Misc.



Figure 33: Misc.



Damage 1: Seat - front: Seat cover - left side - Broken / torn - Loss in value



Damage 1: Seat - front: Seat cover - left side - Broken / torn - Loss in value



Damage 2: Roof: Roof - Stone chips - Paint



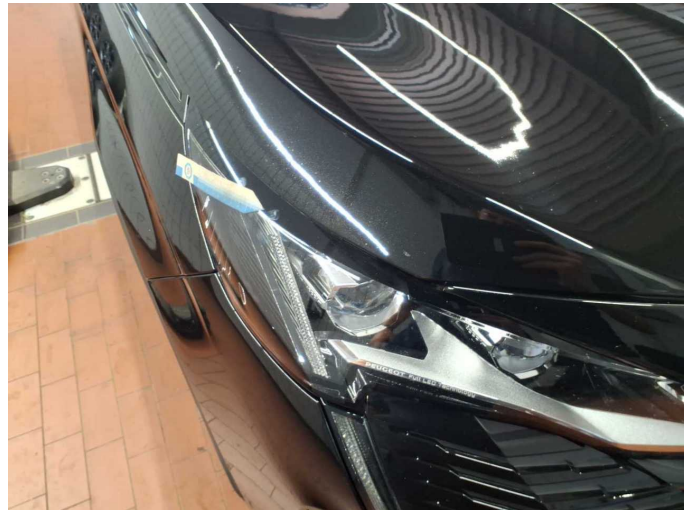
Damage 2: Roof: Roof - Stone chips - Paint



Damage 3: Vehicle glazing: Windscreen - Stone chips - Replace



Damage 3: Vehicle glazing: Windscreen - Stone chips - Replace



Wear and tear 7: Headlight: Headlight - right side - Stone chips - No deduction



Wear and tear 7: Headlight: Headlight - right side - Stone chips - No deduction



Repainting 1: Bonnet



Repainting 2: Side panel - rear left side

Wartungshistorie

(gemäß Auftraggeber Informationen)



Fahrgestellnummer: VF3MJEHZUNS173425
Hersteller / Modell: PEUGEOT PEUGEOT 5008 BlueHDi 180 EAT8 GT Pack

Datum	KM-Stand	Beschreibung
13.05.2026	192.455	Bremsklötze hinten; Bremsklötze vorne; HU + AU
16.01.2026	182.760	Systemtest/Eigendiagnose
01.12.2025	182.119	Dieselpartikelfilter ern; Systemtest/Eigendiagnose
19.11.2025	181.159	Bremsflüssigkeit; Bremsflüssigkeit ern; Kraftstofffilter ern; Luftfiltereinsatz ern; Motoröl b. Wartung; Ölfilter ern; Regelwartungsdienst; Systemtest/Eigendiagnose; Wartung Sonstiges
13.07.2025	171.770	Getriebeöl ern/prüfen; Systemtest/Eigendiagnose; Wartung Sonstiges
28.03.2025	147.179	Keilrippenriemen; Motoröl b. Wartung; Ölfilter ern; Regelwartungsdienst; Spannrolle ern; Systemtest/Eigendiagnose; Wartung Sonstiges; Wasserpumpe ern; Zahnriemen/Steuerkett ern
15.01.2025	132.475	Bremse Sonstiges; Bremsklötze hinten; Bremsscheiben hinten
04.11.2024	117.086	Kraftstofffilter ern; Luftfiltereinsatz ern; Motoröl b. Wartung; Ölfilter ern; Regelwartungsdienst; Wartung Sonstiges
04.07.2024	88.607	Motoröl b. Wartung; Ölfilter ern; Regelwartungsdienst; Wartung Sonstiges
17.05.2024	77.357	Bremse Sonstiges; Bremsklötze vorne; Bremsscheiben + Klötze v; Bremsscheiben vorne
27.02.2024	59.512	Bremse Sonstiges; Bremsflüssigkeit; Bremsflüssigkeit; Bremsflüssigkeit ern; Bremsflüssigkeit ern; Bremsklötze hinten; Bremsscheiben + Klötze h; Bremsscheiben hinten; Kraftstofffilter ern; Luftfiltereinsatz ern; Motoröl b. Wartung; Ölfilter ern; Regelwartungsdienst; Wartung Sonstiges
09.10.2023	30.119	Motoröl b. Wartung; Ölfilter ern; Regelwartungsdienst; Wartung Sonstiges