

Expertise

Protocol number: 45868316
Order No. / Reference: 26397148
Inspection date: 10 Jun 2026

Manufacturer: Skoda

Model: Superb Combi 2.0 TDI DSG Ambition

VIN: TMBJH7NP2N7030949



Vehicle details

Manufacturer / Type / Model / Equipment

Skoda Superb Combi 2.0 TDI DSG Ambition

Vehicle Identification number TMBJH7NP2N7030949

Mileage (Read) 166,884 km

First registration 9 Mar 2022

Number of holders 1

Power / Engine displacement 110 kw / 1,968 ccm

Fuel type / Cylinder Diesel / 4

Gearbox / Number of gears Automatic / 7

Type of drive Front drive

Type of vehicle Station wagon

Colour / colour code Black Magic

Doors / Seats 5 / 5

Upholstery type Cloth

Colour of upholstery Black-Anthracite

Vehicle with smoke odor no



Vehicle details			
Maintenance booklet / proof	digital proof / complete	Next maintenance in	10,300 km
Last service on / at	03/2026 at 162,594 km		
Key is / should be	2 / 2	FZG documents	ZB#2 (B) was available (copy), ZB#1 (S) was not available.
		Letter No.	GJ959373
Previous damage / Accident	None detectable	Repainting	None detectable
Inspection conditions	sufficient	Lifting equipment / pit	yes
Test drive	Not performed	Engine function test	Performed
Manufacturer key number/ type code number	8004 / APL 01645		
Emission standard	EURO6;WLTP;AP;PI/CI; M, N1 I	fine dust sticker	
Permitted total weight	2,196 kg	Empty weight	

Tyres

Mounted tyres				
#	Tyre size	Type of tyre	Manufacturer	Tread depth
1)	215/60 R16 95H	Winter tyres on Light alloy	Dunlop	3mm / 3mm
2)	215/60 R16 95H	Winter tyres on Light alloy	Dunlop	6mm / 6mm
Additional tyres				
#	Tyre size	Type of tyre	Manufacturer	Tread depth
1)	215/60 R16 95V	Summer tyres on Light alloy	Continental	5mm / 5mm
2)	215/60 R16 95V	Summer tyres on Light alloy	Continental	5mm / 5mm
Replacement				
Typ	Tyre size	Type of tyre	Manufacturer	Tread depth
	Tirefit	Expiration date 12/2025		

Legend: Tread depth information for the left tire is listed first, for the right tire it is listed second on the axle in the direction of travel.



Equipment

Standard equipment

- Closed storage compartments behind the wheel arches in the trunk, including cargo elements
- Airbag, driver's knee airbag
- Airbag, front side airbags
- Traction control (ASR)
- Exterior mirrors and door handles in body color
- Illuminated glove compartment
- Hydraulic brake assist (HBA)
- Roof rails, black
- Diesel particulate filter and SCR catalyst
- Tachometer
- Easy Start (start-stop button instead of ignition lock)
- Electronic transverse differential lock (XDS+)
- Driving light assistant and rain sensor
- Front radar assistant including city emergency braking function
- Transmission: 7-speed dual-clutch transmission (DSG)
- Tinted windows
- Rear window wiper including windshield washer system
- Child safety lock for rear doors & windows, electric
- Air Care Climatronic air conditioning (2-zone)
- Front and rear headrests are height-adjustable.
- LED low beam
- Steering wheel: 2-spoke leather steering wheel with multifunction buttons
- Rear center armrest with cup holders and pass-through option
- Multi-collision brake
- Rear parking sensors
- Radio: Bolero infotainment system
- Radio accessories: In-car communication
- Radio accessories: USB ports at the front (Type-C) and USB charging port (Type-A) in the center armrest
- Tire mobility kit
- Heated windshield washer nozzles
- Superb seat belts
- Seats: Height-adjustable front seats
- SKODA Care Connect
- Start/stop system including brake energy recuperation
- 12V socket in the trunk
- Telephone: Convenient Bluetooth hands-free phone system
- Immobiliser
- Storage compartments
- Airbag, driver and switchable passenger airbag
- Airbag, head airbags
- Anti-lock braking system (ABS)
- Electrically adjustable and heated exterior mirrors
- Electrically folding exterior mirrors
- Hill start assist
- Grey headliner
- Decorative inlay silver brushed
- Digital instrument cluster (Virtual Cockpit) 10.2"
- Third brake light
- Electronic parking brake including auto-hold function
- Electronic Stability Control (ESC)
- Electric windows front and rear, including anti-pinch protection and child safety lock
- Cruise control system (cruise control) including speed limiter
- Heated rear window
- ISOFIX preparation on the outer rear seats, including top tether
- Boot cover, roll-up and removable, semi-automatic
- Paint finish: Solid
- LED taillights
- Steering wheel: height and reach adjustable
- Reading lights at the front and rear of the headliner
- Front center armrest with storage compartment
- Engine drag torque control (MSR)
- LED fog lights with integrated cornering lights
- Upholstery: Cloth
- Radio accessories: Digital radio reception DAB+
- Radio accessories: SmartLink+
- Radio accessories: Wireless SmartLink for Apple CarPlay
- Tire pressure monitoring
- Wheels: 16" Orion alloy wheels
- Electromechanical power steering
- Seats: Adjustable lumbar support in the front seats
- Seats: Rear seat backrest split 60:40, foldable
- Sun visor on driver and passenger side with illuminated make-up mirror
- 12V socket in the center console, front and rear
- Chrome-plated elements
- Lashing eyes in the trunk
- Central locking with remote control



Extra equipment

- Divider grille Skoda Superb Combi
- Electric panoramic sunroof including sunshade (elimination of the glasses compartment in the headliner)
- Front and rear parking sensors
- Luggage net partition
- Paint finish: Pearl effect
- Reversing camera with washer nozzle
- Seats: Heated front seats
- Swiveling trailer hitch including trailer stabilization
- Package: Business Amundsen (DSG) (Amundsen navigation system - voice control - Wi-Fi hotspot - Wireless Smartlink for Apple CarPlay - 8" capacitive touchscreen in glass design - Phonebox - Traveller assistance system (traffic sign recognition, predictive lane keeping assist pACC, adaptive lane keeping assist, emergency and traffic jam assist, capacitive steering wheel with hands-off detection) - 230 V socket and 3 USB ports, tablet holder - Sunset - Infotainment Online (3-year subscription))

Brief expert findings

Documents submitted	At the time of the inspection, the vehicle registration certificate Part 2 (title) was available, but the vehicle registration certificate Part 1 (document) was not. (Copy)
VIN comparison	The vehicle identification number (VIN) was read from the vehicle and its conformity with the submitted documents was confirmed by the undersigned during the inspection.
Inspection	The inspection conditions were sufficient for the assessment of the vehicle. Lifting equipment and/or a pit were available for examining the vehicle.
Test drive	No test drive/shunting maneuver was carried out during the inspection of the vehicle.
Engine function test	An engine test run was performed.

Value reducing factors

No.	Component group	Description
1	Equipment	Tirefit filler - Expired - Replace
2	Side panel - rear right side	Sill - dent(s) - Smart repair
3	Door - front right side	Door edge - Scratch(es) - Smart repair
4	Sill - right side	Sill - dent(s) - Smart repair
5	Roof	Roof rail - left side - dent(s) - Smart repair
6	Tail light	Tail lamp - left side - Scratch(es) - Loss in value
7	Trim / covers	Boot lid - interior trim - Scratch(es) - Replace
8	Door - rear right side	Door - Scratch(es) - Paint
9	Side panel - rear left side	Side panel - Scratch(es) - Paint
10	Bonnet	Bonnet (Verätzungen) - Paint defect - Paint

Wear and tear

No.	Component group	Description
1	Vehicle glazing	Windscreen - Stone chips - No deduction
2	Roof	Roof rail - right side - dent(s) - No deduction
3	Documents	Service book (Digitaler Ausdruck) - Missing - No deduction

The vehicle shows signs of wear and tear commensurate with its age and use.



Order/Scope of Order

An order was placed to prepare a sales report for the described vehicle. This report includes the following:

- Description of key vehicle information
- Documentation of equipment features
(Delivery by third-party service providers)
- Documentation of damage, defects, missing parts
- Documentation of prior damage, unrepaired prior damage, repainting
- A brief visual or functional inspection of the equipment details, if possible.
(Functional testing of driver assistance systems is not included in the scope of services!)
- a photographic documentation of the vehicle

Basis for the order

This product is based on the guidelines for vehicle returns and valuations published by Alphabet Fleet GmbH. The expert makes the specific findings in each individual case objectively, within the framework of the prescribed standards, based on their own expertise.

The vehicle inspection takes place in a fully assembled, unassembled state.

Damage or defects that can only be detected during disassembly/diagnostic work or through further investigation remain within the realm of prognostic risk. An increased risk exists due to concealed defects caused by fraudulent misrepresentation and which were not identifiable by the expert.

Damage or defects resulting from normal use or wear and tear of the vehicle will be accepted in accordance with the applicable standard.

There was no explicit identification or monetary consideration of the expected features within the product.

Features which, in their nature and extent, slightly exceed normal use but do not constitute unacceptable damage, will be documented and indicated as signs of wear, if applicable.

Damage or defects that, according to the applicable standard, can no longer be attributed to normal use or wear and tear are listed under "Value Reducing Factors" in the product description.

Depending on the product specification, a monetary ID can be provided. If this takes place, the costs can be 100% or pro rata depending on the vehicle's age and mileage.

Previous damages

No apparent prior damage that had been repaired could be found on the vehicle.

Comments

-Der montierte Winterradsatz ist kein Bestandteil des Auslieferungsumfangs.



Figure 1: Diagonal front (left)



Figure 2: Diagonal front (right)

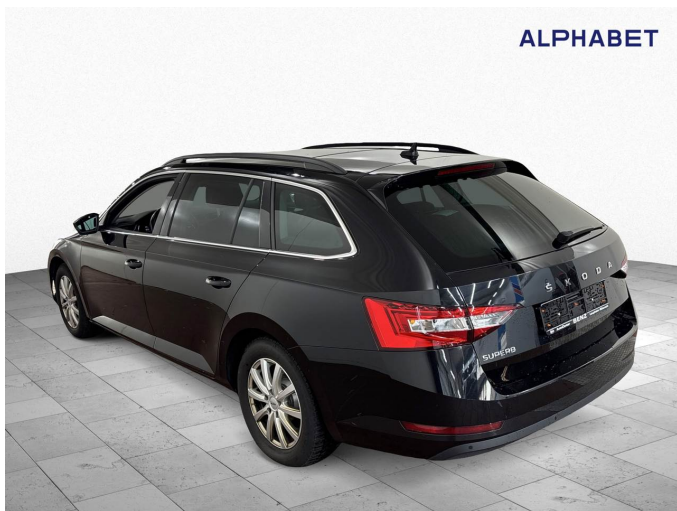


Figure 3: Diagonal rear (left)



Figure 4: Diagonal rear (right)



Figure 5: Interior - front



Figure 6: Interior - rear



Figure 7: Instrument cluster



Figure 8: Instrument panel

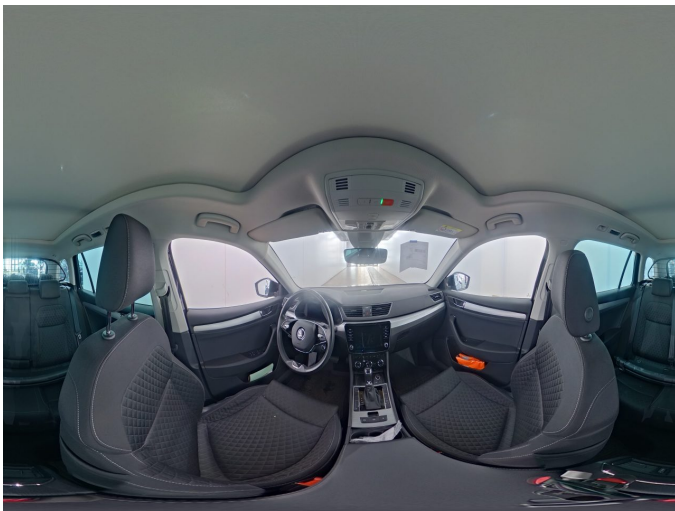


Figure 9: Interior 360° view



Figure 10: Cargo area

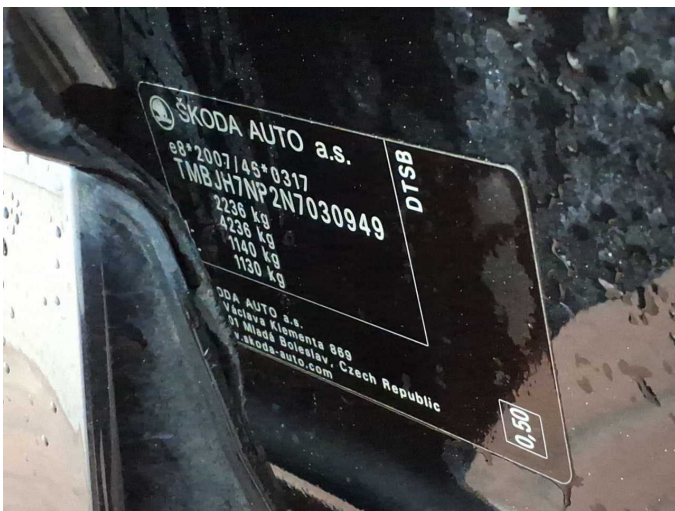


Figure 11: VIN



Figure 12: Mounted tyres



Figure 13: Documents

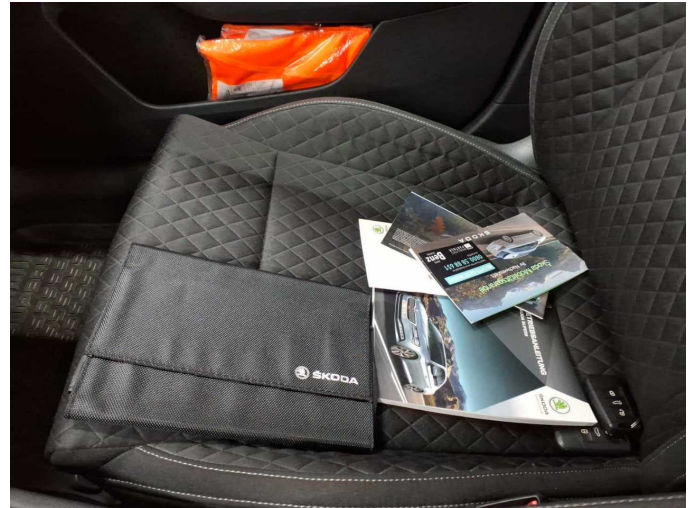


Figure 14: Documents



Figure 15: Additional tyres



Figure 16: Navigation



Figure 17: Misc.



Figure 18: Misc.



Figure 19: Misc.



Figure 20: Misc.



Figure 21: Misc.



Figure 22: Misc.



Figure 23: Misc.

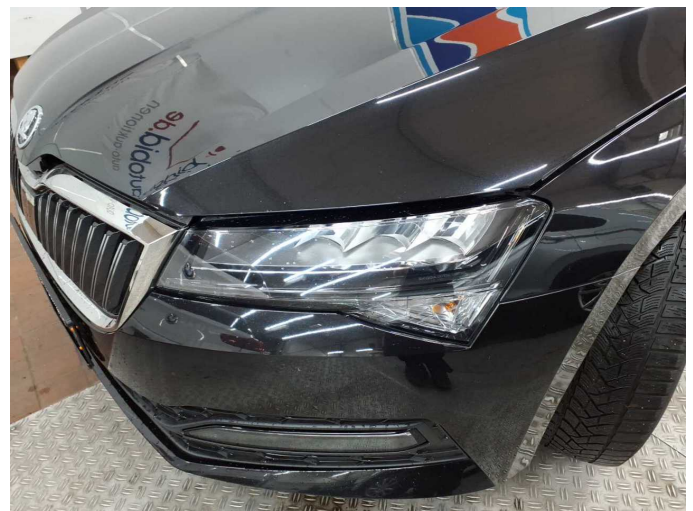


Figure 24: Misc.



Figure 25: Misc.



Figure 26: Misc.

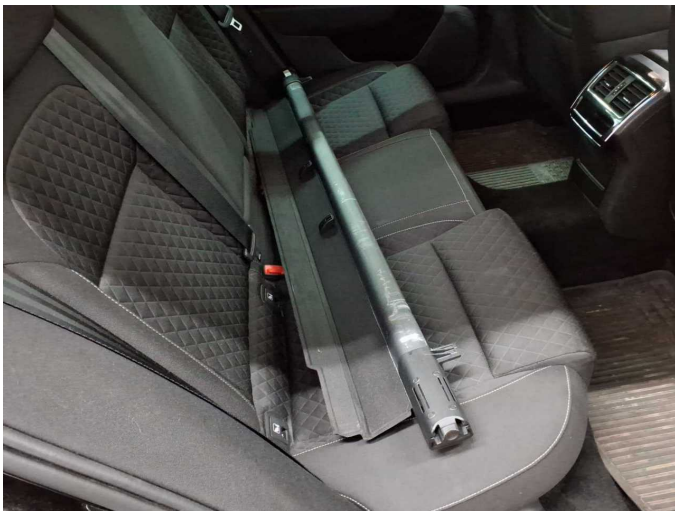


Figure 27: Misc.

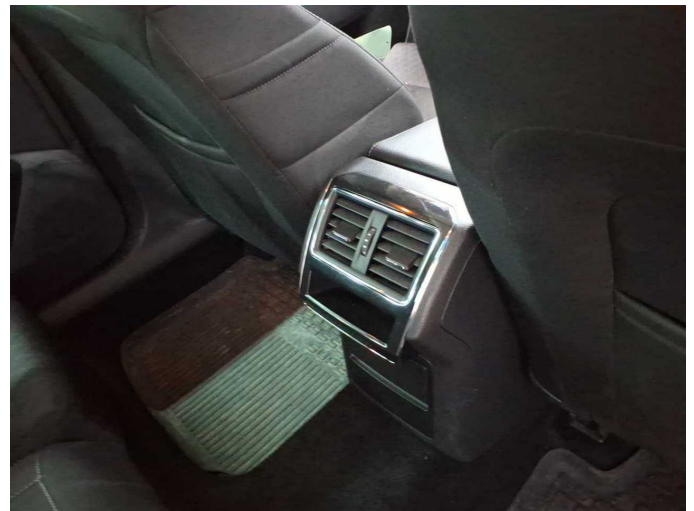


Figure 28: Misc.

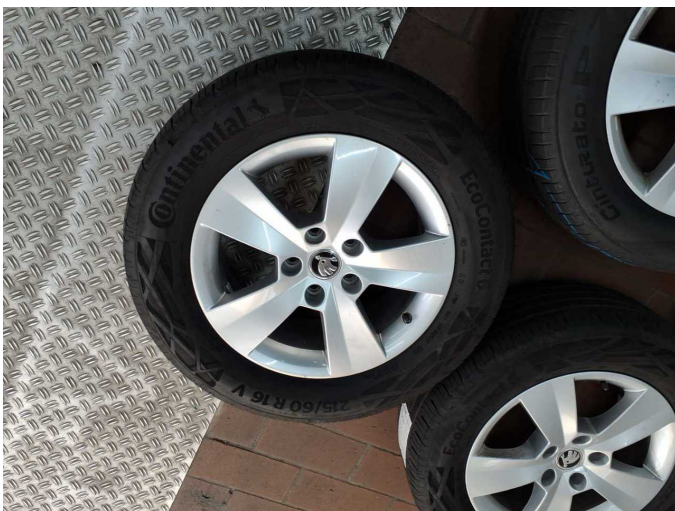


Figure 29: Misc.



Figure 30: Misc.



Figure 31: Misc.



Figure 32: Misc.

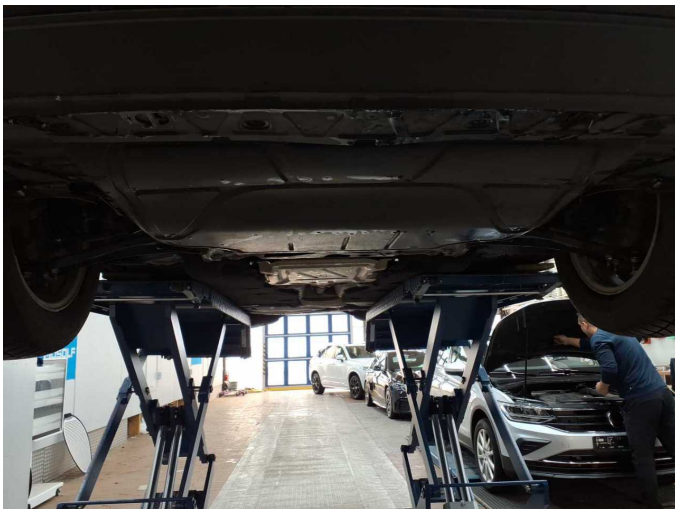


Figure 33: Misc.

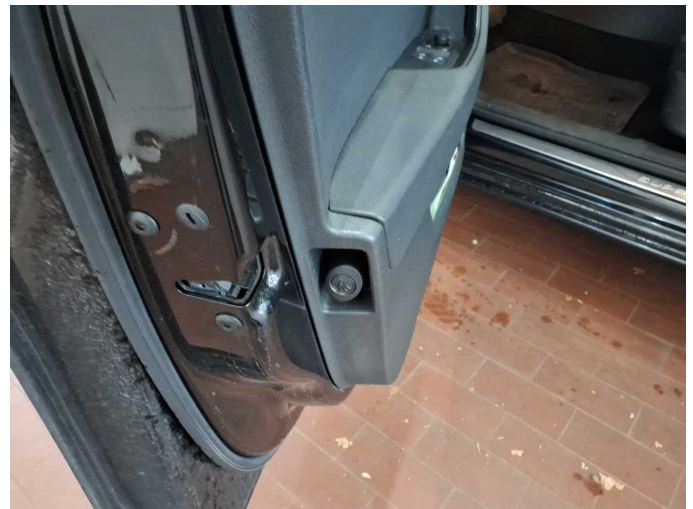
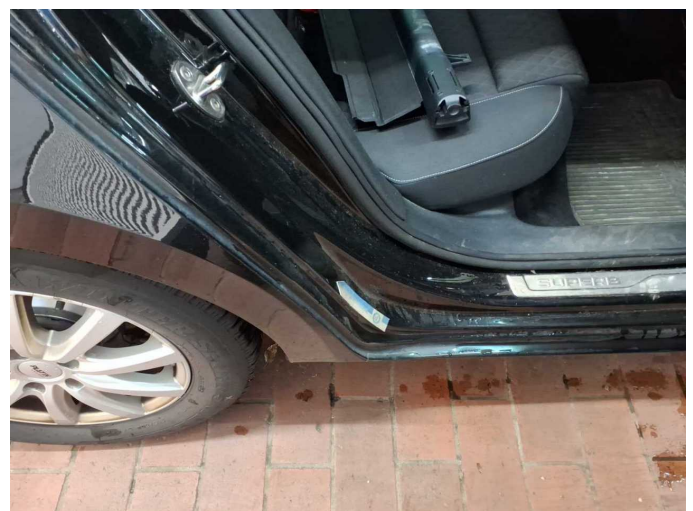


Figure 34: Misc.



Damage 1: Equipment: Tirefit filler - Expired - Replace



Damage 2: Side panel - rear right side: Sill - dent(s) - Smart repair



Damage 2: Side panel - rear right side: Sill - dent(s) - Smart repair



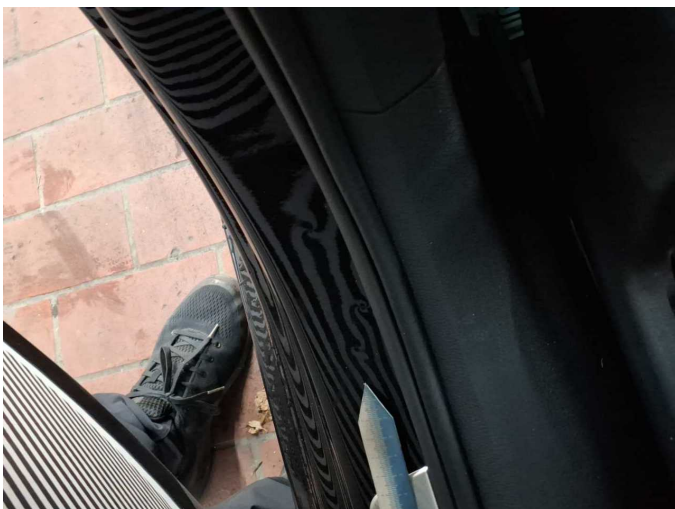
Damage 3: Door - front right side: Door edge - Scratch(es) - Smart repair



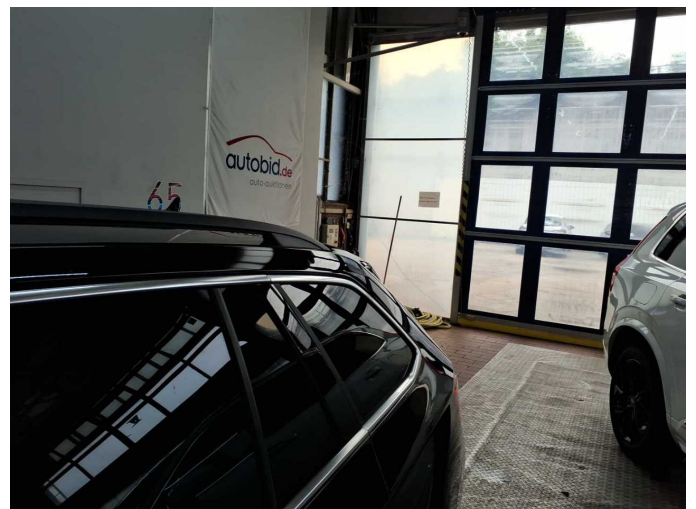
Damage 3: Door - front right side: Door edge - Scratch(es) - Smart repair



Damage 4: Sill - right side: Sill - dent(s) - Smart repair



Damage 4: Sill - right side: Sill - dent(s) - Smart repair



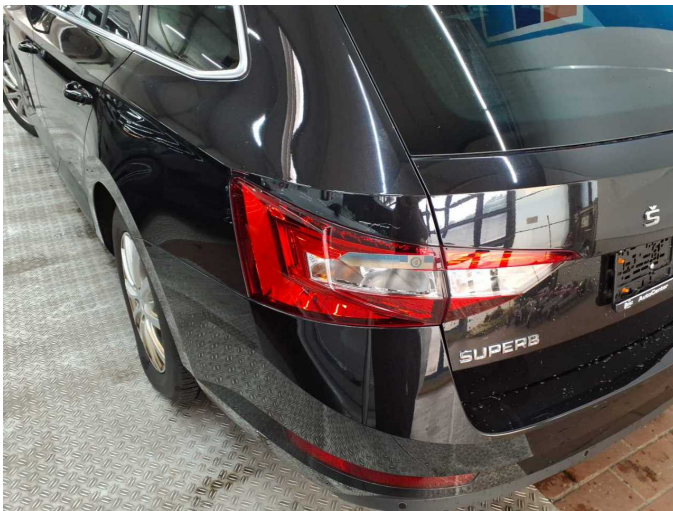
Damage 5: Roof: Roof rail - left side - dent(s) - Smart repair



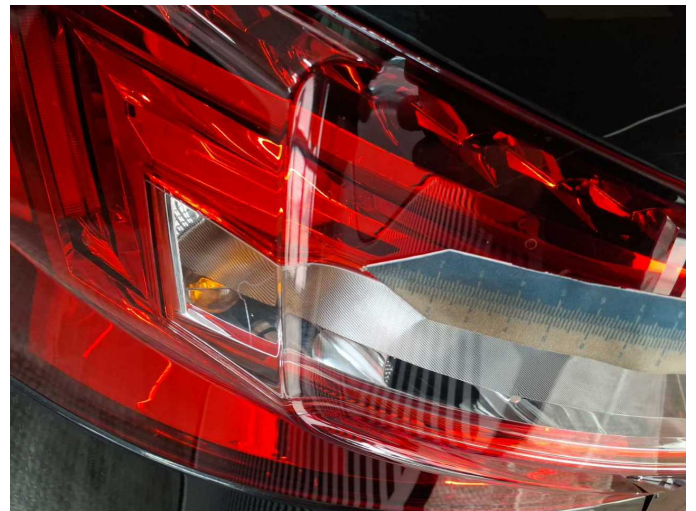
Damage 5: Roof: Roof rail - left side - dent(s) - Smart repair



Damage 5: Roof: Roof rail - left side - dent(s) - Smart repair



Damage 6: Tail light: Tail lamp - left side - Scratch(es) - Loss in value



Damage 6: Tail light: Tail lamp - left side - Scratch(es) - Loss in value



Damage 7: Trim / covers: Boot lid - interior trim - Scratch(es) - Replace



Damage 7: Trim / covers: Boot lid - interior trim - Scratch(es) - Replace



Damage 7: Trim / covers: Boot lid - interior trim - Scratch(es) - Replace



Damage 7: Trim / covers: Boot lid - interior trim - Scratch(es) - Replace



Damage 8: Door - rear right side: Door - Scratch(es) - Paint



Damage 8: Door - rear right side: Door - Scratch(es) - Paint



Damage 8: Door - rear right side: Door - Scratch(es) - Paint



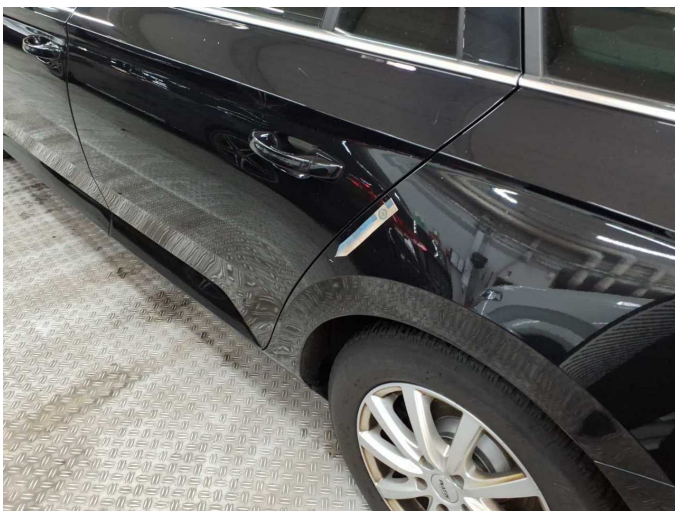
Damage 8: Door - rear right side: Door - Scratch(es) - Paint



Damage 9: Side panel - rear left side: Side panel - Scratch(es) - Paint



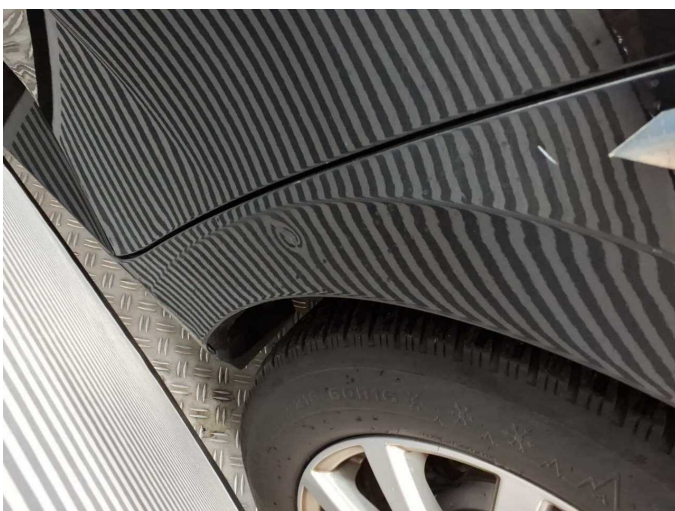
Damage 9: Side panel - rear left side: Side panel - Scratch(es) - Paint



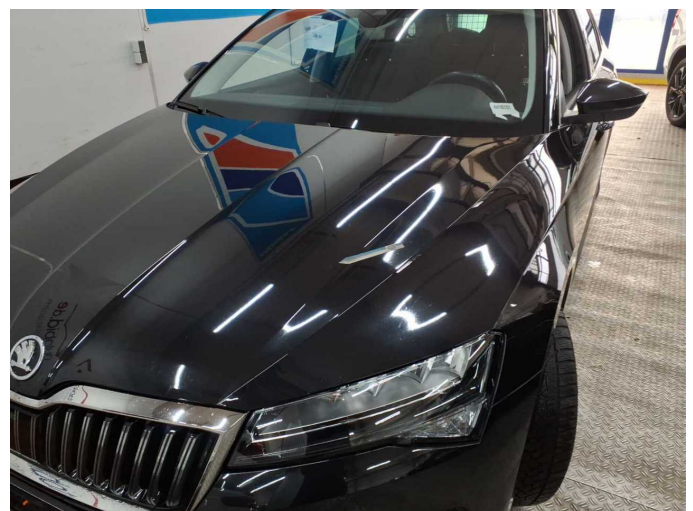
Damage 9: Side panel - rear left side: Side panel - Scratch(es) - Paint



Damage 9: Side panel - rear left side: Side panel - Scratch(es) - Paint



Damage 9: Side panel - rear left side: Side panel - Scratch(es) - Paint



Damage 10: Bonnet: Bonnet (Verätzungen) - Paint defect - Paint



Damage 10: Bonnet: Bonnet (Verätzungen) - Paint defect - Paint



Damage 10: Bonnet: Bonnet (Verätzungen) - Paint defect - Paint



Wartungshistorie

(gemäß Auftraggeber Informationen)

Fahrgestellnummer: TMBJH7NP2N7030949
Hersteller / Modell: SKODA SKODA Superb Combi 2.0 TDI DSG Ambition

Datum	KM-Stand	Beschreibung
15.04.2026	164.727	Bremse Sonstiges; Bremsklötze hinten; Bremsscheiben hinten; Reparatur Sonstiges
30.03.2026	162.594	Bremsflüssigkeit; Bremsflüssigkeit ern; Kraftstofffilter ern; Luftfiltereinsatz ern; Motoröl b. Wartung; Ölfilter ern; Ölwechsel; Systemtest/Eigendiagnose; Wartung Sonstiges
28.11.2025	147.103	Regelwartungsdienst; Wartung Sonstiges
19.09.2025	139.227	Motoröl b. Wartung; Ölfilter ern; Ölwechsel; Wartung Sonstiges
06.09.2025	136.040	Systemtest/Eigendiagnose
28.07.2025	134.838	Batterie ern; Reparatur Sonstiges; Systemtest/Eigendiagnose
05.06.2025	128.280	Keilrippenriemen; Reparatur Sonstiges; Systemtest/Eigendiagnose
07.03.2025	116.800	AU; Bremse Sonstiges; Bremsklötze hinten; Bremsklötze vorne; Bremsscheiben hinten; Bremsscheiben vorne; Getriebeöl ern/prüfen; Motoröl b. Wartung; Ölfilter ern; Regelwartungsdienst; Wartung Sonstiges
29.07.2024	88.889	Motoröl b. Wartung; Motoröl b. Wartung; Motoröl b. Wartung; Ölfilter ern; Ölfilter ern; Ölfilter ern; Ölwechsel; Ölwechsel; Ölwechsel; Wartung Sonstiges; Wartung Sonstiges; Wartung Sonstiges
28.05.2024	88.886	Bremsflüssigkeit; Bremsflüssigkeit ern; Kraftstofffilter ern; Luftfiltereinsatz ern; Regelwartungsdienst; Systemtest/Eigendiagnose; Wartung Sonstiges
12.02.2024	74.337	Bremse Sonstiges; Bremsklötze vorne; Bremsscheiben vorne
19.01.2024	72.835	Motoröl b. Wartung; Ölwechsel
25.08.2023	57.696	Bremse Sonstiges; Bremsklötze hinten; Bremsscheiben hinten; Regelwartungsdienst; Wartung Sonstiges
01.06.2023	51.867	Motoröl b. Wartung; Ölfilter ern; Ölwechsel; Wartung Sonstiges
02.12.2022	27.950	Motoröl b. Wartung; Regelwartungsdienst