

Expertise

Protocol number: 45897918
Order No. / Reference: 26350210
Inspection date: 11 Jun 2026

Manufacturer: Volkswagen

Model: Tiguan 2.0 TDI SCR DSG Life

VIN: WVGZZZ5NZNW029313



Vehicle details

Manufacturer / Type / Model / Equipment

Volkswagen Tiguan 2.0 TDI SCR DSG Life

Vehicle Identification number WVGZZZ5NZNW029313

Mileage (Read) 132,447 km

First registration 28 Mar 2022

Number of holders 1

Next periodical technical inspection 03/2027
(Report not on hand)

Power / Engine displacement 110 kw / 1,968 ccm

Fuel type / Cylinder Diesel / 4

Gearbox / Number of gears Automatic / 8

Type of drive Front drive

Type of vehicle SUV

Colour / colour code nightshade blue-metallic
(P5J)

Doors / Seats 5 / 5

Upholstery type Cloth

Colour of upholstery Black



Vehicle details			
Maintenance booklet / proof	digital proof / complete	Next maintenance in	13,700 km
Last service on / at	12/2025 at 120,624 km		
Key is / should be	2 / 2	FZG documents	ZB#2 (B) was available (copy), ZB#1 (S) was not available.
		Letter No.	GJ007979
Previous damage / Accident	None detectable	Repainting	None detectable
Inspection conditions	sufficient	Lifting equipment / pit	yes
Test drive	Not performed	Engine function test	Performed
Manufacturer key number/ type code number	0603 / BZG 21645		
Emission standard	EURO6;WLTP;AP;PI/CI; M, N1 I	fine dust sticker	
Permitted total weight	2,200 kg	Empty weight	

Tyres

Mounted tyres				
#	Tyre size	Type of tyre	Manufacturer	Tread depth
1)	215/65 R17 99V	Summer tyres on Light alloy	Continental	5mm / 5mm
2)	215/65 R17 99V	Summer tyres on Light alloy	Michelin	6mm / 6mm
Additional tyres				
#	Tyre size	Type of tyre	Manufacturer	Tread depth
1)	215/65 R17 103V	Winter tyres on Light alloy	Bridgestone	5mm / 5mm
2)	215/65 R17 103V	Winter tyres on Light alloy	Hankook	5mm / 5mm
Replacement				
Typ	Tyre size	Type of tyre	Manufacturer	Tread depth
	Tirefit	Expiration date 10/2025		

Legend: Tread depth information for the left tire is listed first, for the right tire it is listed second on the axle in the direction of travel.



Equipment

Standard equipment

- Airbag for driver and front passenger including knee airbag on the driver's side
- Adaptive Cruise Control (ACC) (DSG)
- black roof rails
- Tachometer
- Electronic parking brake including auto-hold function
- Automatic headlight control, with LED daytime running lights
- Windscreen made of laminated safety glass, heat and sound insulating
- Rear window heated
- Interior mirror automatically dimming
- LED license plate lighting
- Combination instrument cluster with electronic speedometer
- LED reading lights, 2 in the front and 2 in the rear
- Light in the front footwell
- Manual headlight range adjustment
- Multifunction display "Premium"
- Non-smoking version
- Upholstery: Cloth
- Radio accessories: 8 speakers
- Tire pressure monitoring system
- Wheels: Tires 215/65 R 17, rolling resistance class A
- Gearshift knob in leather
- electromechanical power steering
- Seats: Front passenger seat backrest folds down completely
- Seats: Lumbar support in the front
- Seats: Front seats with height adjustment
- Start-stop system with brake energy recuperation
- Power outlet: 2 USB-C ports on the front
- First aid kit, warning triangle and high-visibility vest
- Green thermal insulation glazing, sides and rear
- Airbag: Head airbag system for front and rear passengers including front side airbags
- third brake light
- Diesel particulate filter
- Parking assistance
- Electronic Stability Program with counter-steering support
- Electric windows front and rear
- High beam control Light Assist
- Pedestrian detection
- Transmission: 7-speed DSG
- rear window wiper
- ISOFIX mounting points, also for i-Size child car seats
- Air conditioning system "Air Care Climatronic"
- Rear headrests (3)
- Front headrests
- Steering wheel: Multifunction steering wheel in leather, with paddle shifters
- front center armrest
- Fatigue detection
- Emergency call service
- Radio "Composition"
- Rain sensor
- Wheels: Light alloy (4) "Tulsa" 7 J x 17
- Wheels: Tire Mobility Set
- Drawers under the front seats
- Seat belts: Three-point automatic seat belts at the front with height adjustment and belt tensioner
- Seats: Comfort seats in the front
- Seats: Rear bench seat asymmetrically split
- Lane keeping assistant "Lane Assist"
- 12-volt socket
- Textile floor mats front and rear
- Electronic immobilizer
- Central locking without safe locking, with remote control and 2 remote keys



Extra equipment

- Electrically adjustable, folding, and heated exterior mirrors, ambient lighting, passenger-side mirror lowering function
- LED matrix headlights - IQ.LIGHT (Dynamic Light Assist high beam control for LED matrix headlights - LED headlights with LED daytime running lights and cornering lights - Dynamic headlight range control with dynamic cornering lights - Dark red LED taillights - Bad weather lights and cornering lights)
- Package: Business Premium (DSG) (App-Connect incl. App-Connect Wireless for Apple CarPlay and Android Auto - Leather multifunction steering wheel, heated, with shift paddles - Automatically heated front windscreen washer nozzles - Voice control - "Comfort" telephone interface with inductive charging function - Heated front seats)
- Package: Sport package (progressive steering - tinted rear side windows and rear window - sport suspension)
- Panoramic tilt/slide sunroof with panoramic roof at the rear
- Wheels: Tires 215/65 R 17
- Seats: ergoActive front seats (ergoActive front seats height-adjustable, seat and backrest tilt adjustable, thigh support longitudinally adjustable - lumbar support in front electrically adjustable and with massage function - seat center panels of the front seats and the outer rear seats in microfleece "ArtVelours" - top comfort seats in front)
- Display: Head-up display
- Paint finish: Metallic
- Navigation system "Discover Pro" incl. "Streaming & Internet" (App-Connect incl. App-Connect Wireless for Apple CarPlay and Android Auto - Digital radio reception DAB+ - 23.4 cm TFT touchscreen with gesture control - FM radio and diversity antenna - RDS - MP3 playback - 2 USB-C ports - 4 x 20 watts of power - Map with 2D display - "Comfort" phone interface connectable via Bluetooth - Wireless charging - Traffic sign recognition - Voice control - Points of interest - We Connect Plus incl. We Connect free for 3 years)
- Package: Driver assistance package "Plus" (Driving assistant "Travel Assist", lane keeping assistant "Lane Assist" and "Emergency Assist" - parking steering assistant "Park Assist" incl. parking aid - proactive occupant protection system in conjunction with "Front Assist" - lane change assistant "Side Assist" and parking assistant - traffic sign recognition)
- Auxiliary heating and ventilation (with radio remote control and timer)
- Power outlets: 2 USB-C ports at the front (1 USB-C charging port at the rear of the center console)
- Surround view "Area View" (incl. reversing camera "Rear View")

Brief expert findings

Documents submitted	At the time of the inspection, the vehicle registration certificate Part 2 (title) was available, but the vehicle registration certificate Part 1 (document) was not. (Copy)
VIN comparison	The vehicle identification number (VIN) was read from the vehicle and its conformity with the submitted documents was confirmed by the undersigned during the inspection.
Inspection	The inspection conditions were sufficient for the assessment of the vehicle. Lifting equipment and/or a pit were available for examining the vehicle.
Test drive	No test drive/shunting maneuver was carried out during the inspection of the vehicle.
Engine function test	An engine test run was performed.

Value reducing factors

No.	Component group	Description
1	Side panel - rear right side	Sill - Scratch(es) - Smart repair
2	Rear bumper	Rear bumper (Ladekante) - Scratch(es) - Smart repair
3	Front bumper	Grille - Broken / torn - Replace
4	Roof	Roof - Corrosion - Paint
5	Door - rear right side	Door - Dent / paintcoat damage - Repair and paint
6	Vehicle glazing	Windscreen - Broken / torn - Replace

Wear and tear

No.	Component group	Description
1	Front bumper	Front bumper - Stone chips - No deduction

The vehicle shows signs of wear and tear commensurate with its age and use.



Order/Scope of Order

An order was placed to prepare a sales report for the described vehicle. This report includes the following:

- Description of key vehicle information
- Documentation of equipment features
(Delivery by third-party service providers)
- Documentation of damage, defects, missing parts
- Documentation of prior damage, unrepaired prior damage, repainting
- A brief visual or functional inspection of the equipment details, if possible.
(Functional testing of driver assistance systems is not included in the scope of services!)
- a photographic documentation of the vehicle

Basis for the order

This product is based on the guidelines for vehicle returns and valuations published by Alphabet Fleet GmbH. The expert makes the specific findings in each individual case objectively, within the framework of the prescribed standards, based on their own expertise.

The vehicle inspection takes place in a fully assembled, unassembled state.

Damage or defects that can only be detected during disassembly/diagnostic work or through further investigation remain within the realm of prognostic risk. An increased risk exists due to concealed defects caused by fraudulent misrepresentation and which were not identifiable by the expert.

Damage or defects resulting from normal use or wear and tear of the vehicle will be accepted in accordance with the applicable standard.

There was no explicit identification or monetary consideration of the expected features within the product.

Features which, in their nature and extent, slightly exceed normal use but do not constitute unacceptable damage, will be documented and indicated as signs of wear, if applicable.

Damage or defects that, according to the applicable standard, can no longer be attributed to normal use or wear and tear are listed under "Value Reducing Factors" in the product description.

Depending on the product specification, a monetary ID can be provided. If this takes place, the costs can be 100% d or pro rata depending on the vehicle's age and mileage.

Previous damages

No apparent prior damage that had been repaired could be found on the vehicle.

Comments

Der beiliegende Winterradsatz ist kein Bestandteil der Ausstattung.



Figure 1: Diagonal front (left)



Figure 2: Diagonal front (right)



Figure 3: Diagonal rear (left)



Figure 4: Diagonal rear (right)



Figure 5: Interior - front



Figure 6: Interior - rear



Figure 7: Instrument cluster



Figure 8: Instrument panel



Figure 9: Interior 360° view



Figure 10: Cargo area

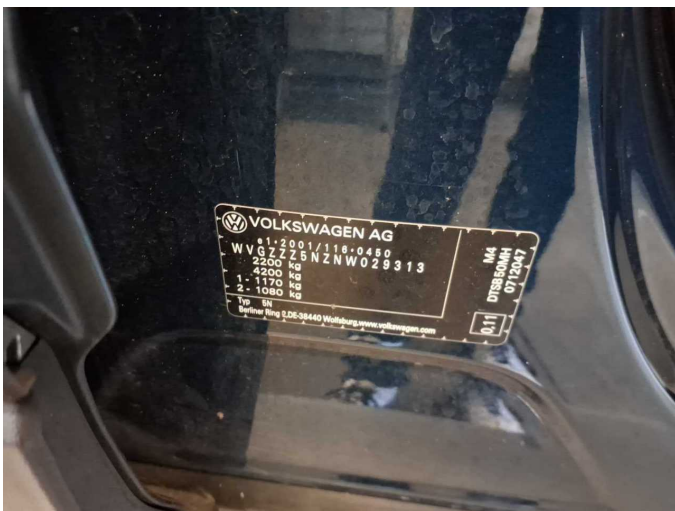


Figure 11: VIN



Figure 12: Mounted tyres



Figure 13: Documents



Figure 14: Additional tyres



Figure 15: Navigation



Figure 16: Misc.



Figure 17: Misc.

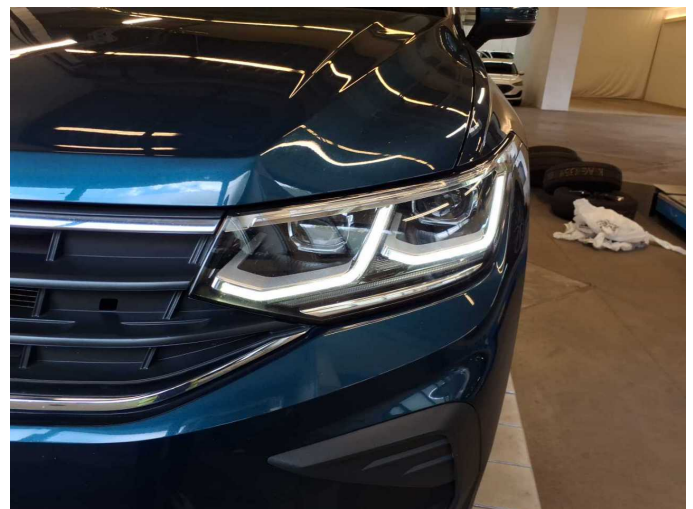


Figure 18: Misc.



Figure 19: Misc.



Figure 20: Misc.

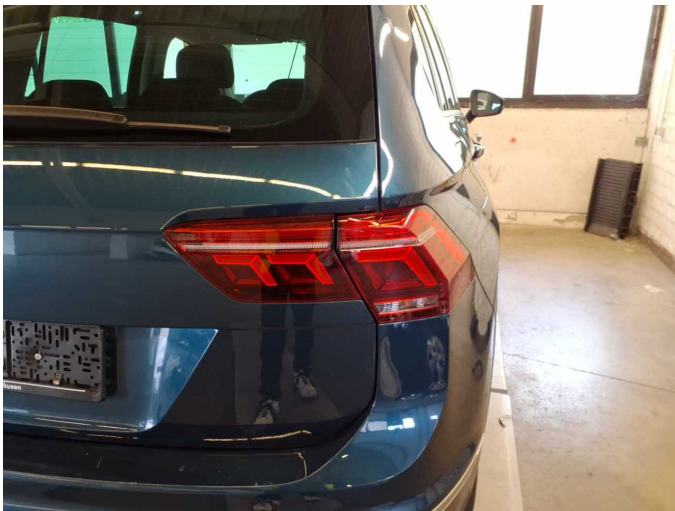


Figure 21: Misc.



Figure 22: Misc.



Figure 23: Misc.



Figure 24: Misc.



Figure 25: Misc.



Figure 26: Misc.



Figure 27: Misc.

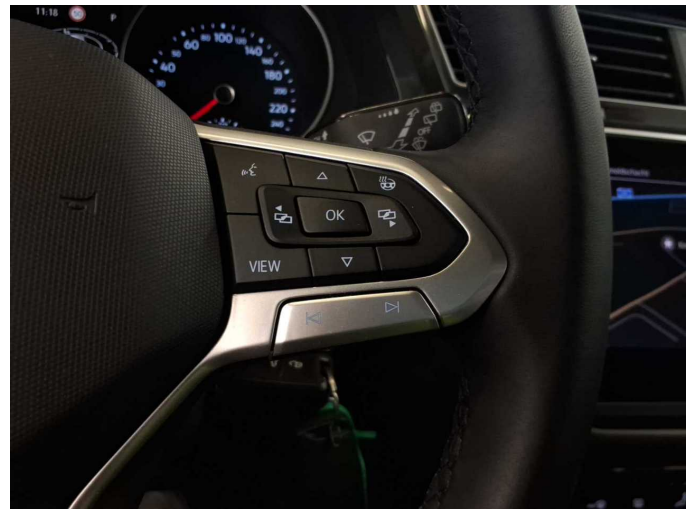


Figure 28: Misc.



Figure 29: Misc.



Figure 30: Misc.



Figure 31: Misc.



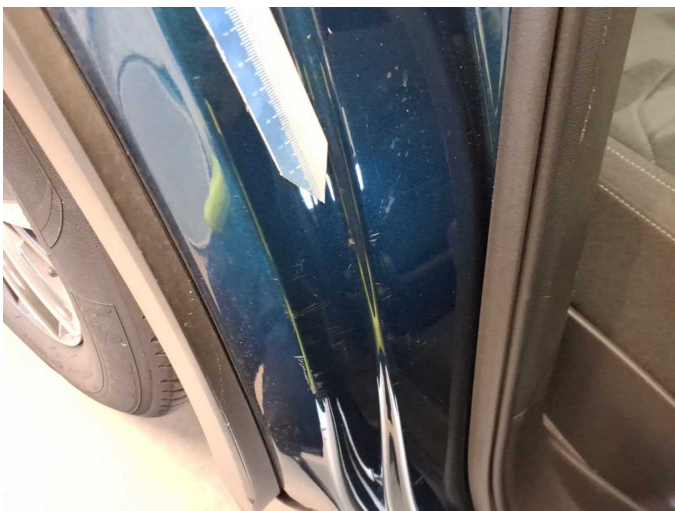
Figure 32: Misc.



Figure 33: Misc.



Damage 1: Side panel - rear right side: Sill - Scratch(es) - Smart repair



Damage 1: Side panel - rear right side: Sill - Scratch(es) - Smart repair



Damage 2: Rear bumper: Rear bumper (Ladekante) - Scratch(es) - Smart repair



Damage 2: Rear bumper: Rear bumper (Ladekante) - Scratch(es) - Smart repair



Damage 2: Rear bumper: Rear bumper (Ladekante) - Scratch(es) - Smart repair



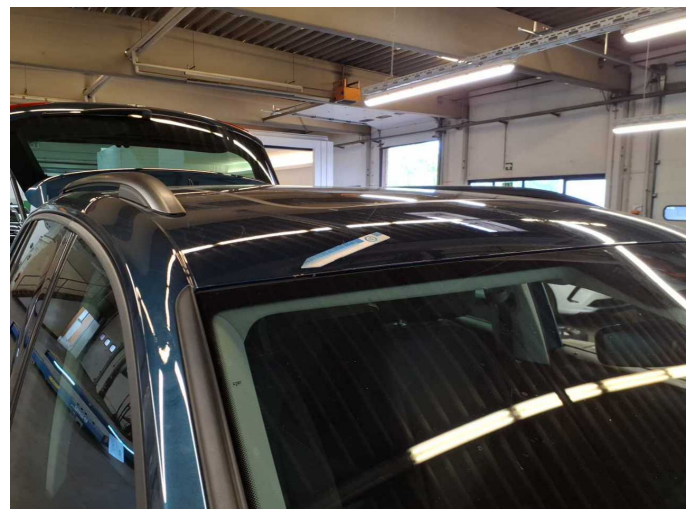
Damage 2: Rear bumper: Rear bumper (Ladekante) - Scratch(es) - Smart repair



Damage 3: Front bumper: Grille - Broken / torn - Replace



Damage 3: Front bumper: Grille - Broken / torn - Replace



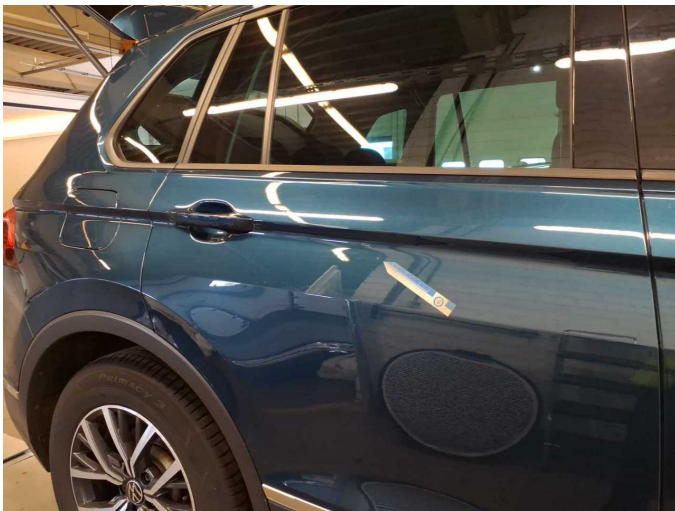
Damage 4: Roof: Roof - Corrosion - Paint



Damage 4: Roof: Roof - Corrosion - Paint



Damage 4: Roof: Roof - Corrosion - Paint



Damage 5: Door - rear right side: Door - Dent / paintcoat damage - Repair and paint



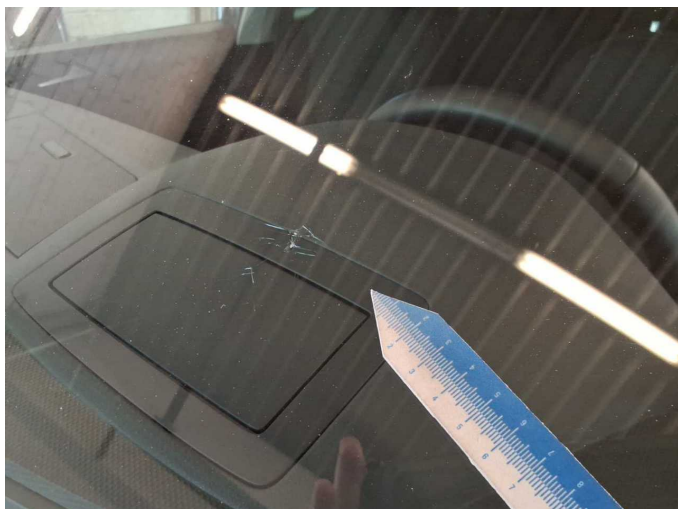
Damage 5: Door - rear right side: Door - Dent / paintcoat damage - Repair and paint



Damage 5: Door - rear right side: Door - Dent / paintcoat damage - Repair and paint



Damage 6: Vehicle glazing: Windscreen - Broken / torn - Replace



Damage 6: Vehicle glazing: Windscreen - Broken / torn - Replace



Wartungshistorie

(gemäß Auftraggeber Informationen)

Fahrgestellnummer: WVGZZZ5NZNW029313

Hersteller / Modell: VOLKSWAGEN VOLKSWAGEN Tiguan 2.0 TDI SCR DSG Life

Datum	KM-Stand	Beschreibung
08.01.2026	120.624	Reparatur Sonstiges; Systemtest/Eigendiagnose
09.12.2025	120.624	Getriebeöl ern/prüfen; Motoröl b. Wartung; Ölfilter ern; Regelwartungsdienst; Wartung Sonstiges
19.05.2025	99.658	Motoröl b. Wartung; Ölfilter ern; Ölwechsel; Wartung Sonstiges
05.03.2025	91.562	AU; Kraftstofffilter ern; Luftfiltereinsatz ern; Regelwartungsdienst; Systemtest/Eigendiagnose; Wartung Sonstiges; Wartung Sonstiges
21.08.2024	73.810	Bremse Sonstiges; Bremsklötze hinten; Bremsklötze vorne; Bremsscheiben hinten; Bremsscheiben vorne; Motoröl b. Wartung; Ölfilter ern; Ölwechsel; Wartung Sonstiges
25.04.2024	60.528	Bremsflüssigkeit; Bremsflüssigkeit ern; Regelwartungsdienst; Wartung Sonstiges
21.11.2023	48.912	Motoröl b. Wartung; Ölfilter ern; Ölwechsel; Wartung Sonstiges
02.02.2023	29.146	Regelwartungsdienst; Wartung Sonstiges
21.11.2022	23.801	Motoröl b. Wartung; Ölfilter ern; Ölwechsel; Wartung Sonstiges